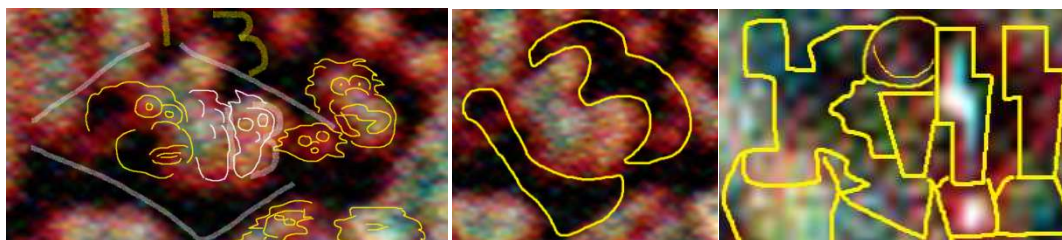


## Prelude

The images on the upper left edge of the Elder Badge base were meant to be viewed by turning the base 90-degrees left. These images recount a few of my experiences, around the time I was 13 years old, in 1977 and 1978; such as going to a Kiss concert, in August 1977, just before I turned 13, and meeting my best friend a month later. Three of these images are presented below. When I found these images, I understood they were a nonverbal request, from God, to write about some of the events that occurred when I was 13; events related to Image Crimes, and Elder base revelations yet to come. It makes sense to do this before I get to the Crime Timeline.



13

September 1977, in junior high, just before I turned 13, I met Rick E. We were born on the same day, 20 miles apart. We became best friends within a few weeks. About 9 months later, the summer of 1978, Rick was beaten by his stepdad, so he ran away to my house. Rick's parents soon agreed to let him live at my house.

Rick had a pretty tough upbringing. His mom dated and married lots of guys.

One day Rick came home kind of excited. He said he ran into his uncle, and his uncle said he was going to give Rick a bunch of pornographic magazines. I immediately thought of playboy magazines –the most pornographic magazines I knew of. A few day later, Rich came home with the pornographic material (1) a pretty gross medium-sized brown paper bag, full of photographs of adults engaged in the worst activities, some with horses..., (2) a bunch of hardcore porn magazines, the likes of which neither Rick nor I previously knew existed. All heterosexual porn, but lots of images of men with uncommonly big circus penises. In high school and part of junior high, I had shower with hundreds of other young men, and I never saw penises like the ones in these magazines.

I was pretty disgusted with adults for the next few years, and for the next few years I had some mild body image insecurities –even though I could see in the High school locker room that I was fine.

I mostly got over the body image stuff probably by the time I was 18. But by my mid 20s, I heard more and more male friends and acquaintances express their desire for larger equipment. This made me feel a little uncomfortable –and

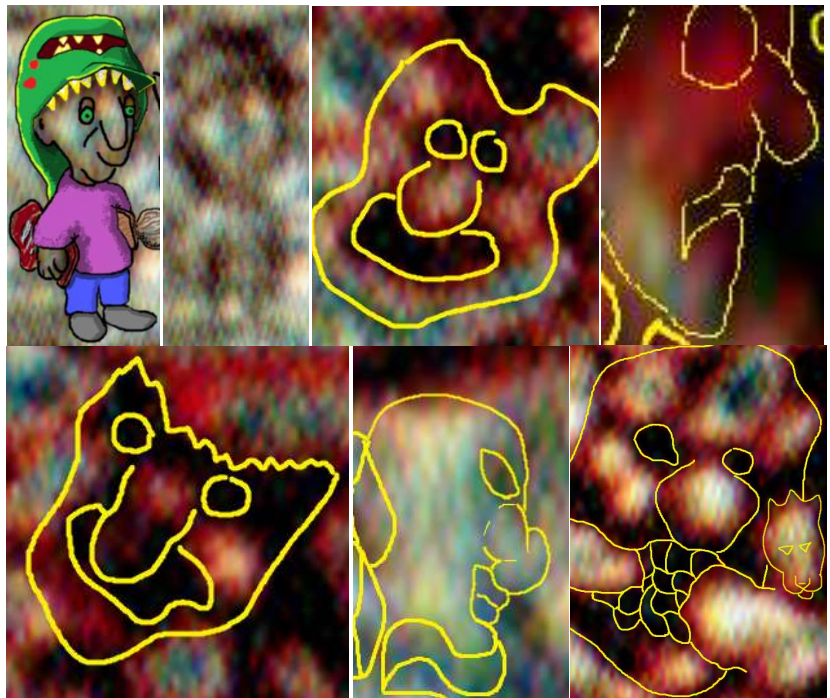
powerless. If a friend has a problem, most co-friends want to help. But I could never help them with this, and I didn't want them to live out the rest of their lives unhappy. By around 2015, when I was around 50, some friends and family members still occasionally voiced dissatisfaction with their reproductive hardware. But by this point I was no longer sympathetic. In reaction to years of hearing male acquaintances whine, I coined the term "fagification" (toned down to *pussification* for *Morons Don't Ride Harleys*, Feb 2017), and I began to tell loved ones who expressed dissatisfaction with their gear that they were *fagifying* the world -making men less manly.

All of these men's problems came from watching pornography -one of the most dangerous Image Crimes. Jesus' Revelation 16:15 advice that people keep their bodies private is surely the solution: **"...Blessed is he who watches, and keeps his garments, lest he walk naked and they see his shame."**

#### Post Prelude

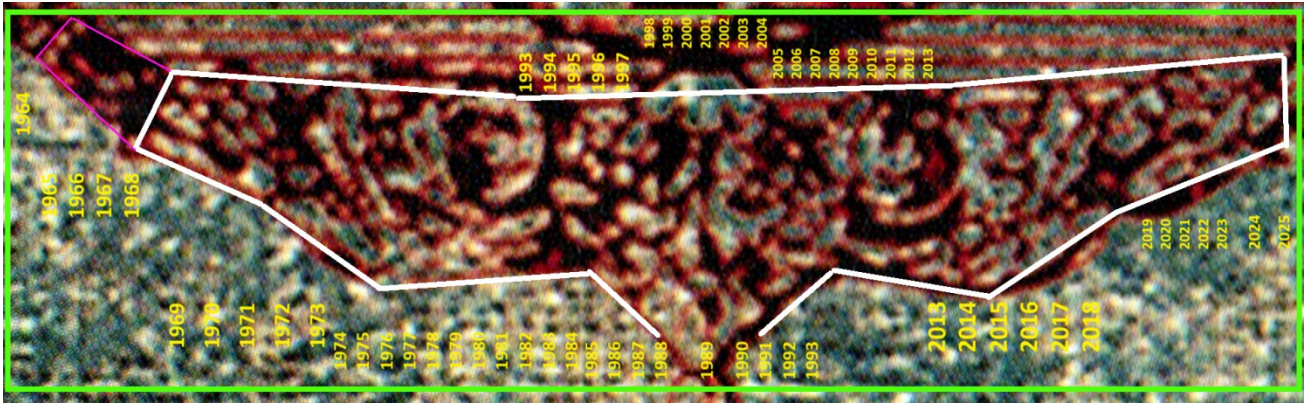
Of course it's extremely unusual that God might want me or anyone to talk about their negative experiences with porn, and their opinions of men who whine about their penises.

But I sensed something different was brewing while writing *Killing Guadalupe*, when I noticed the cartoon representation of me (right, upper right, purple shirt) had a nose that looked a lot like my flaccid penis.



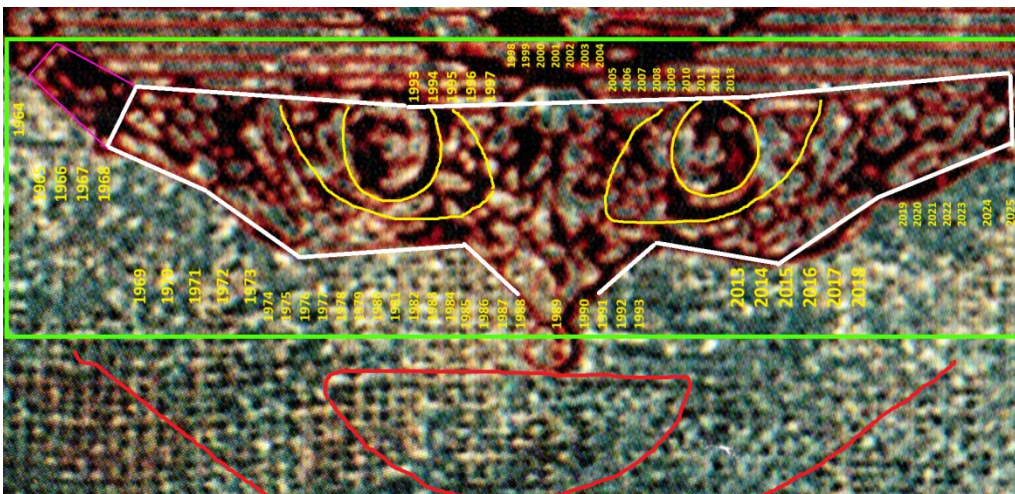
Later, while writing this notebook, I discovered God and Jesus placed the penises of many other central characters where their noses should be. Soon I put the clues together and understood the assignment. Although this is sort of funny, it is certain that God is not amused that Western evil required this drastic intervention. (You'll meet the people above, behind the flaccid penises, in the coming pages, and in chapter 5.)

## Worse People The Central Display *Featured Criminals*



Above: The elder base's Main Display Area (outlined in white), and Mark Crimes Year Key (outlined in green).

The Main Display Area of the Elder base, outline in white, above, is where most Elder base revelations are presented. God gives the violators and criminals who are most central to this story at least one *name rendering* (an expression of their name which reflects their criminal engagement), and at least one cartoonish likeness. To establish primary characters, God often puts a cartoon image of the person in their name rendering, then places one or more likenesses of that character in the Timeline. God often uses the name renderings and cartoonish images to communicate messages. For examples, you may have noticed the white outline image, at the top of the page, looks like a criminal's mask or a pair of sunglasses. If you trace in the iris and eye shapes formed by *The Man* and *the Lion*, and trace in other relevant details, you might get the image below, the masked eyes of Satan (well, a cartoon likeness of Satan); which confirms the image is the Unforgivable Crimes Timeline and Year key –because Mark Crimes are spread through our eyes.



- I'm able to identify the cartoonish character as Satan, because the Elder badge base reveals Satan head is shaped somewhat like an upside-down triangle.

## Big Names



In the UC Timeline, John Gardner has two name renderings, left and below. In his primary rendering, to the left, he is represented by a fat-nosed balloon face.

Notice how large, ornate and extremely creative both of Gardner's name renderings are. This suggests that, beyond implementing Satan's plans with extreme speed and aggression, Gardner also conceived evil schemes of his own.

- Below, notice most of Gardner's name goes well into the blue periphery, surrounding the Elder Badge. This will be explained in chapter 5.

### Mystery Question #3:

In the image to the right, two Revelation R's are emphasized by smaller conventional capital R's inside them (minus their lower left leg). What is the meaning here of the two emphasized R's in Gardner's name?

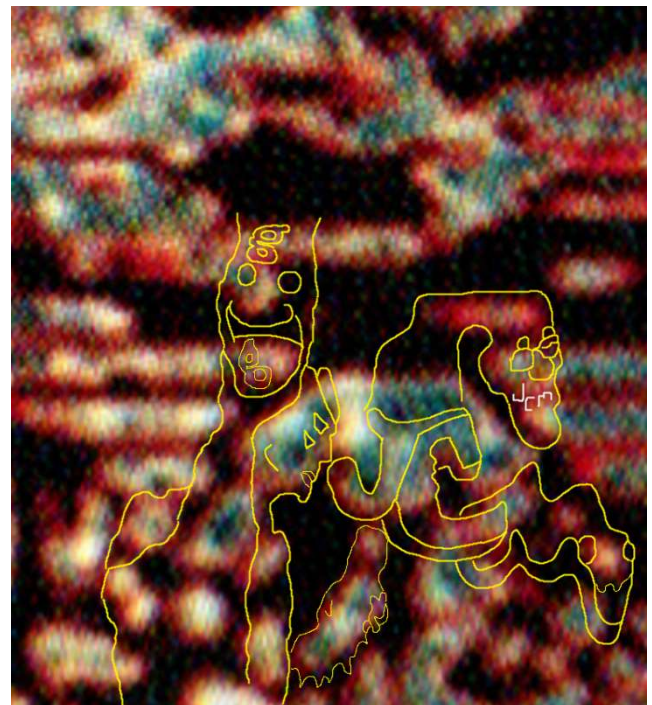


Above: God further confirms Gardner as the Beast, adding *Beast* to his secondary name rendering.

**Beast History.** We first learn of Satan’s War Against God in Revelation, Chapter 12. The War spills into Chapter 13, and into our modern world at 13:11. In 13:18 we meet a beast who is or was human, who appears as evil as Satan, and who damns the world with Unforgivable Marks.

In Revelation there are three obvious beasts, but a fourth is discretely created in 16:13. The first beast, the *Beast Out of the Sea*, is the Holy Roman Empire, 1519 to 1869. The second beast, the *Beast out of the Land*, is the US, circa 1946 to 2002. The third beast is the *spirit of John W Gardner*, who died in 2002. Gardner, able to speak with Satan since 1937, is often considered (by me –the guy who revealed Gardner was the Beast) to have been the Beast from 1937 until his death (2002); but technically, per the Bible, Gardner did not become the Beast, in spirit, until he died, in 2002. <sup>1</sup> In June or July of 2025, I discovered the 4<sup>th</sup> beast, John C Malone, the only man designated *Beast while he was alive*. Malone has been the living Beast since around December 2000.

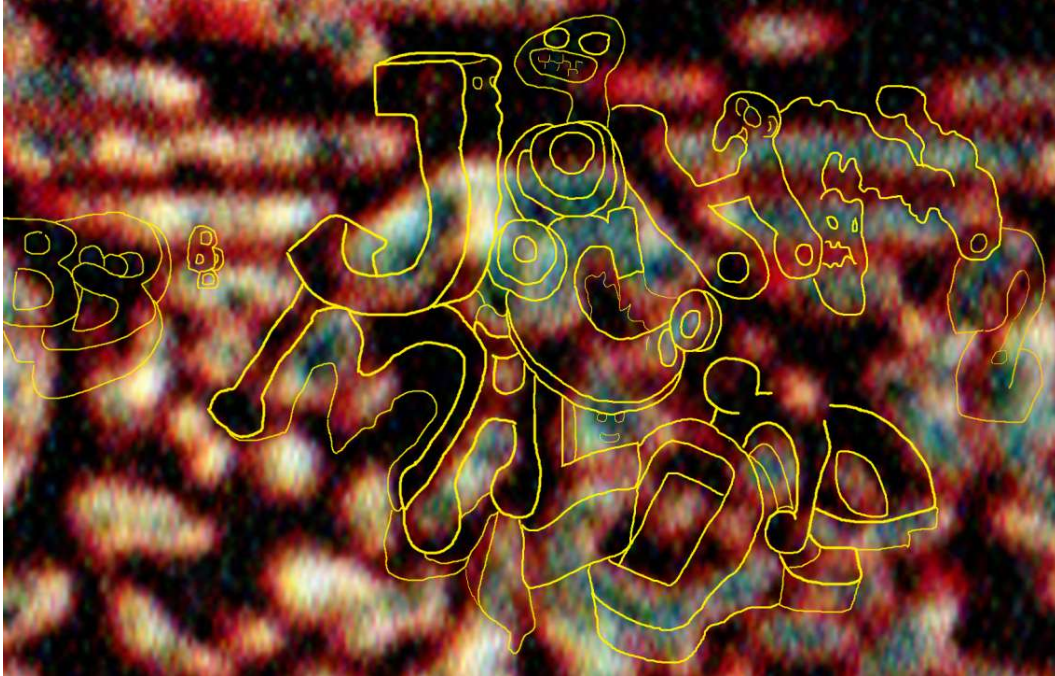
God included the image to the right in the Elder base as a first step toward confirming John C Malone as the second human beast. On the previous page, in Timeline’s primary rendering of John W Gardner’s name, he’s depicted as a robust young balloon, floating before the mouth of Satan. But in the image to the left, in the center of the UC Timeline, around the year 2000, when Gardner resigned as *Beast*, Gardner is a deflated old balloon (with a “g” on its forehead and chin), hanging limp below Satan. Under Gardner’s image, Satan is personified, ever-young and powerful, with two sets of eyes (watching the world)



and two horns. Here, God reveals one of Malone’s images, by linking the letters *JC* to a professorial old man’s head, suspended by Stanford red (Malone holds honorary positions at Stanford University, where he lives –like Gardner before him), with *JCM* over his mouth; a snake-like *M* completes the initials. **The image speaks:** *Moments after Gardner resigned (2000), Satan turned to Malone, as if to say, “You’re up.”*

**Mystery Question #4:** Is there Biblical support for a 4<sup>th</sup> beast (a 2<sup>nd</sup> human beast)?

<sup>1</sup> It’s possible that Gardner became the Beast, in *conceptual spirit*, around December 2000, after he resigned as Satan’s minion.



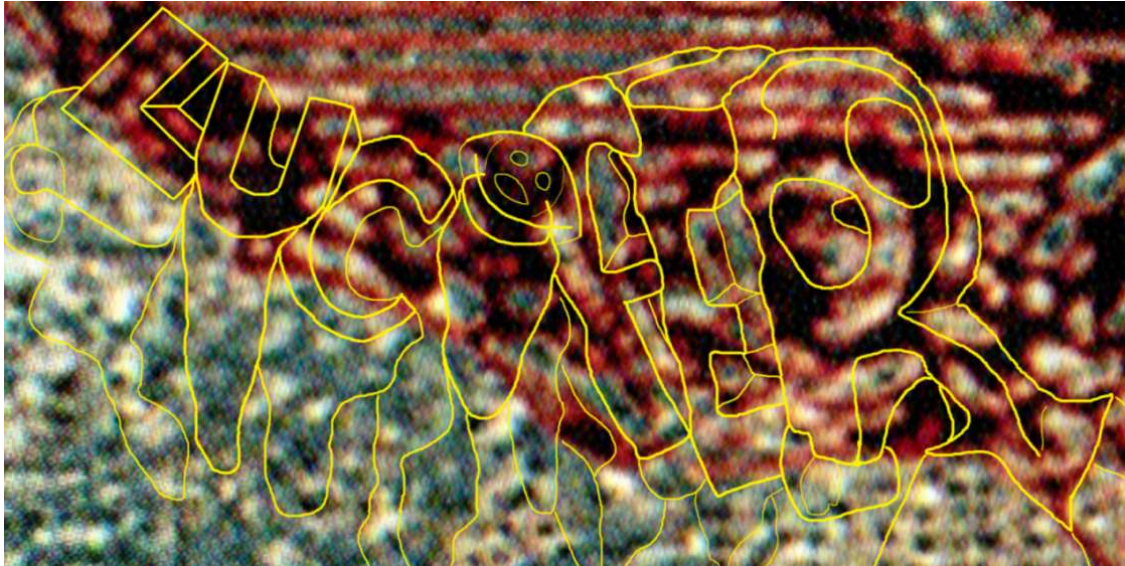
John C Malone's name in the Elder base display area.

Compare John C Malone's name rendering, above, to Gardner's on the previous page. Here are a few points to observe:

- Notice Malone's first name AND the initials *JC* –this was to confirm the previous JCM image against this image, which is his official name image.
- Notice Malone's name is huge, like Gardner's, but the letter's vary in style, and are not nearly so ornate and well integrated as Gardner's. As Malone's only job was to do what Satan ordered, this likely reflects that Malone did not execute Satan's instructions as methodically and aggressively as Gardner.
- Notice the cartoon image of Malone trying to raise his head as high as possible, and just reaching the bottom of Satan's chin (whereas, in Gardner's name image, Gardner's head effortlessly rises to Satan's mouth). This reflects Malone's desire to be as effective and respected (by evil insiders) as Gardner.
- Notice Malone's child-like name design, indicating he is not exceptionally bright.
- Notice the large 2 on the right. This tells us Malone is/was the second beast.
- Notice the two sets of interlinked B's on the left side. Each set represents one beast. The B's on the left (Gardner and Satan) are much bigger than the B's on the right (Malone and Satan). Indicating Malone was much less important to spreading evil than Gardner.<sup>2</sup>

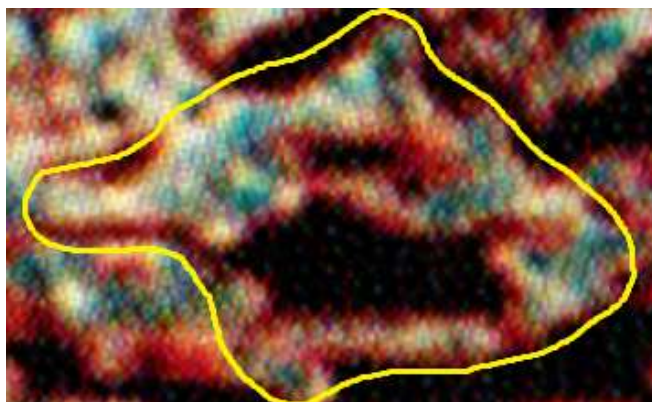
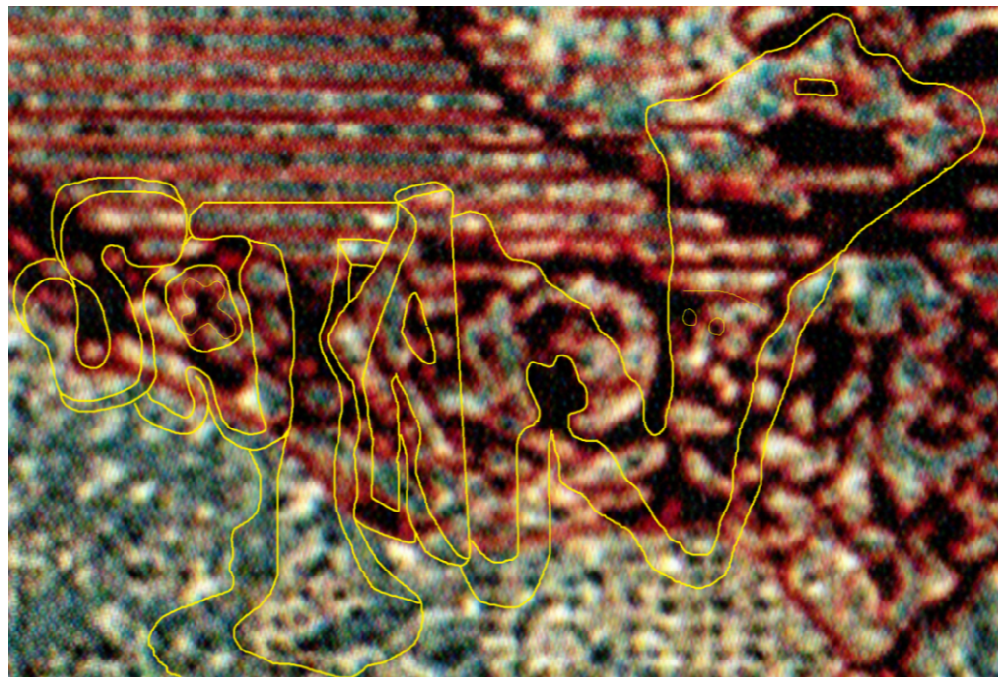
---

<sup>2</sup> A small fraction of this size difference may be owed to time: Malone was 61, fairly old, when he came to power.



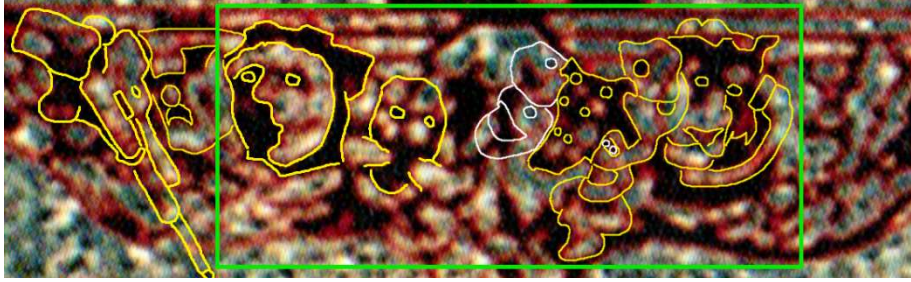
**Left:** the giant *Revelation R* in *Lucifer* –Satan’s original name– identifies the Wagers as his idea.

The right leg of the *electric N*, in Satan’s name, reveals his image and position in the Elder base, above the mouth of the volcano and above the central display. Notice the shadowy figure in a hat, under the Electric N. Soon we’ll discover Satan’s *primary* image –and he wears a hat.



**Left:** An enlargement of Satan’s image and position in the Elder base. (There is another image of Satan, hidden in this position, soon to be revealed.)

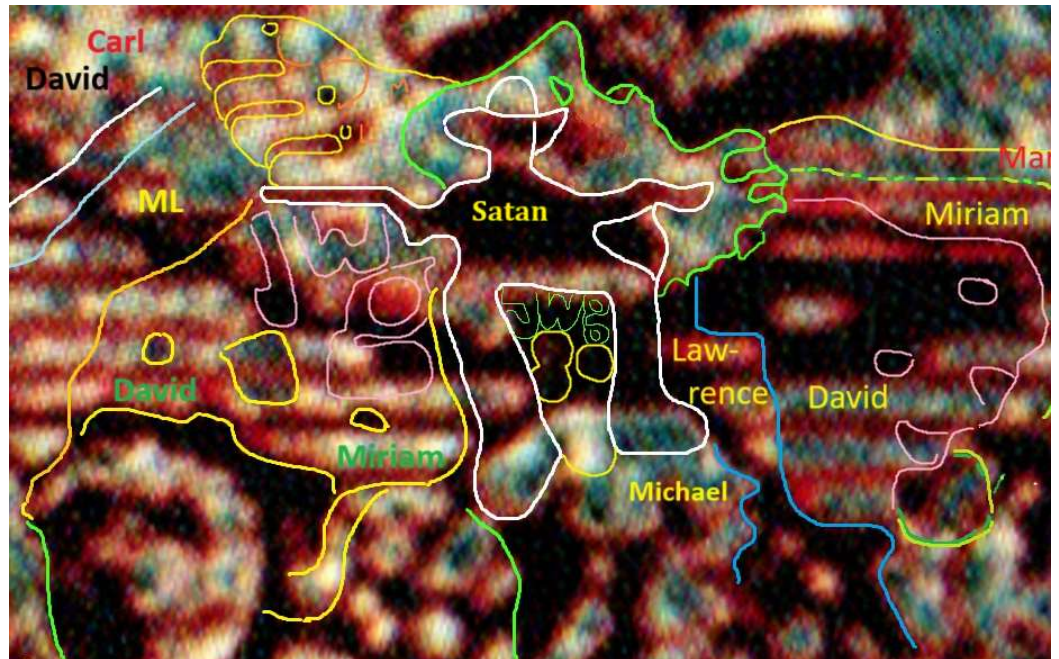
## The Central Display *Featured Criminals*



The *Central Display Area* is the area in the green rectangle, above; called the *central display* because (1) this central area seems illuminated, like a TV display, and (2) a portion of the *featured violators*, on the right half of the inner rectangle, are organized, as if on display in a shop window (this organized group represents *organized crime*; although not all parties in this group are guilty of organized crime).

All of the visible characters in the central display area represent people who committed many Mark Crimes against me. These people are not necessarily the worst criminals in the overall story (although some are). Rather, this group serves to efficiently explain the story, warn of drastic increases in homosexuality in the West, and they act as a representative sample of an average group of Americans. Nine of the featured 12 completed college, and six have post-grad credentials.

In the image to the right, God depicts Satan in a director's or conductor's chair, above the central display, directing or orchestrating all crimes against me and much of the world.



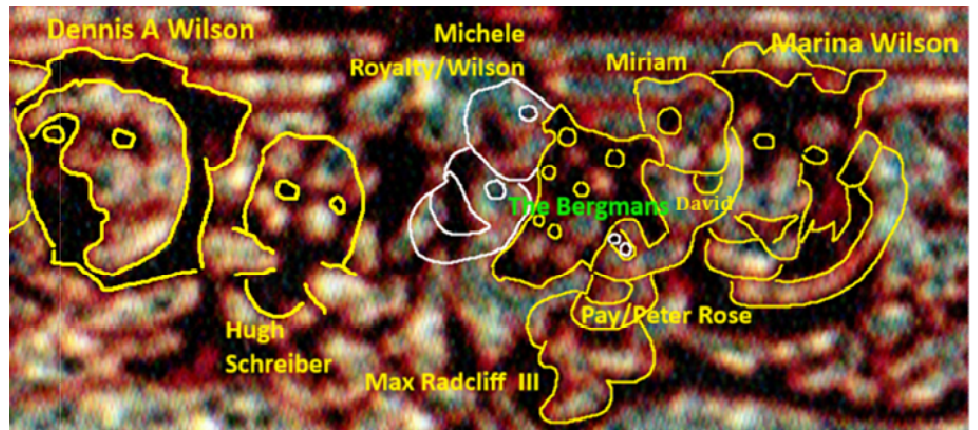
- God also presents Satan in a director's chair, with a music conductor's wand, because Satan used Gardner to create the Big 6 film and TV companies (who also owned the major music companies) to control public thought.

## Character Representations & Communication Flow

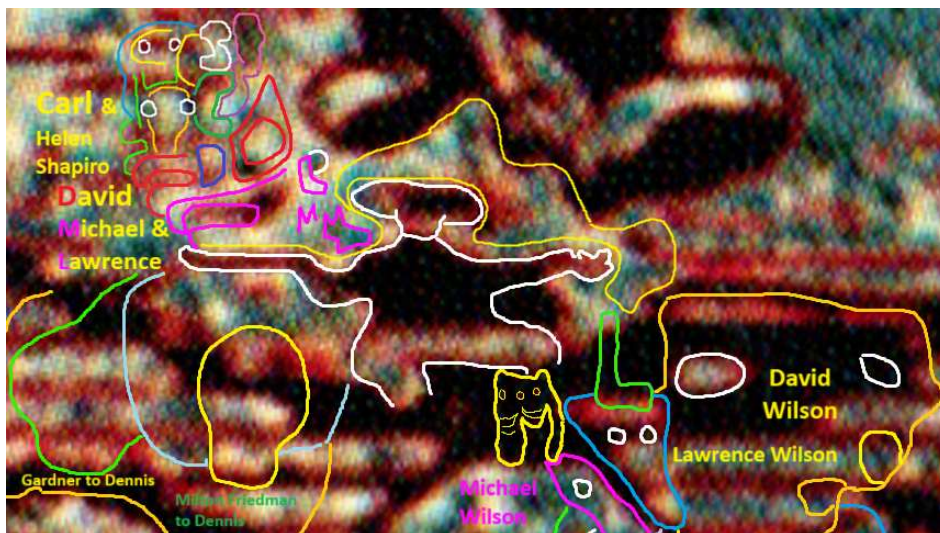
Some of the significant characters in the base have only one visual image or representation, while others have 2, 3, 4 or even 5 representations. God uses these representations to reveal details about the criminals' crimes, and sometimes details about their lives, afterlife fate, and shameful sexual conduct. Also very importantly, God uses these representations to illustrate the flow-of-communication from Satan to Gardner or Malone, and out to the other parties in the chain. From this model we can understand how Satan and Gardner, and then Malone, directed politicians and business leaders, to control global commerce.

In the communication models, Satan's orders ALWAYS go from Satan to a beast, John Gardner or John Malone.

As you see in the image to the right, which names some of the parties in the central display area, and in the image below, there are many players in this story. Beyond Satan and his beasts, this story includes:



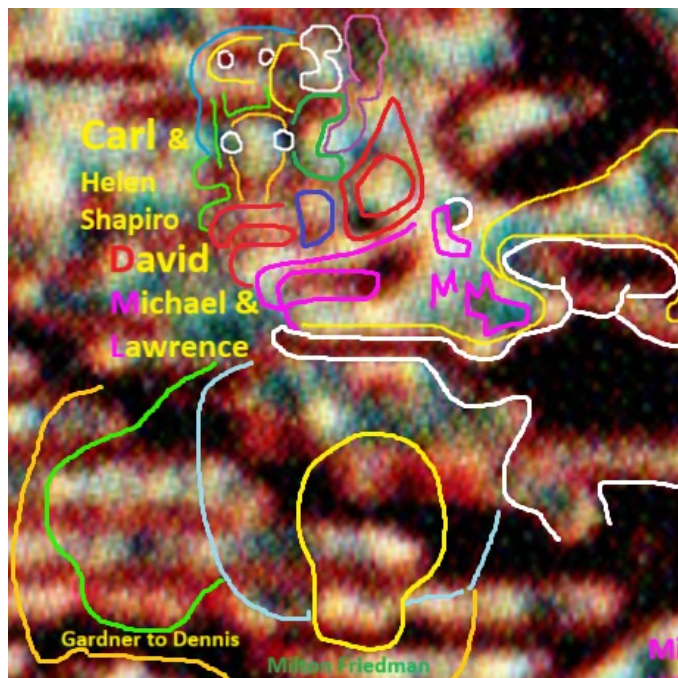
Dennis A Wilson, Hugh Schreiber, Marina Hope Wilson, David Wilson, Carl Shapiro, Lowell Bergman, Pay Rose, James Maxwell Radcliff, Michele Royalty Wilson, Miriam Wilson, Josiah Hooper, Michael Wilson, Lawrence Wilson, Jake Bergman, and more



Sharing these names will help illustrate the flow of communication.

To the right one of many illustrations of the many possible communication routes, from Satan to the beasts, to the criminals/violators.

To the right, the upper left corner of the previous image shows the communication tendencies/priorities for getting information to Dennis Wilson. **John W Gardner is represented by the cloudlike mass around Satan's head.** If Gardner did not call Dennis directly, Carl Shapiro and his wife, Helen (both represented, at the top, by two human-like heads, with the letters CS -Carl Shapiro- near them), were Gardner's first alternatives. David Wilson, in the middle, was the next option, represented by a predatorial animal mouth, outlined in red. Michael and Lawrence Wilson are

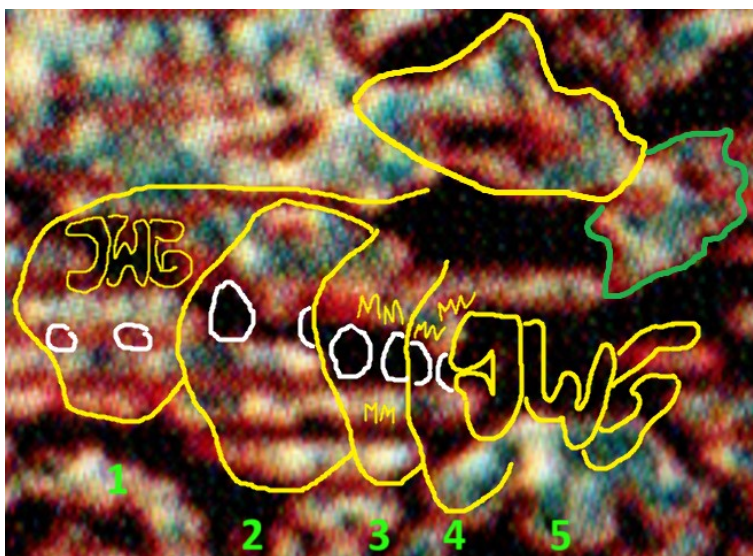


Next, at the bottom, represented by a predatorial animal mouth, outlined in darkish-pink.

To the left, the five images below Satan, outlined in yellow, represent various ways Gardner communicated with Dennis.

NOTE: the primary image of Dennis, *The Man*, is just below and left of these characters.

From left to right, in order of preference, Gardner's paths of communication with Dennis were: (1) calling Dennis himself

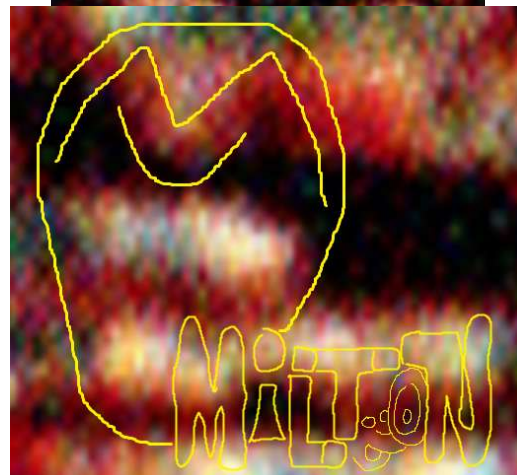
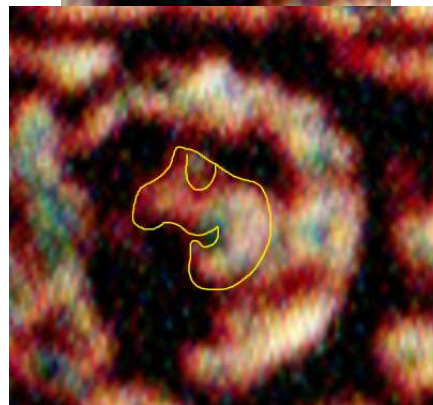


(initials JGW); (2) having Gardner's "wife" call Dennis (this does not represent Gardner's legitimate wife; more about this soon); (3) having John C Malone -the beast in training- call (the first M in MM is for Malone, the second M represents chapter 13 of Revelation, where the beasts are introduced); (4) call Dennis' daughter Marina (not a flattering image).

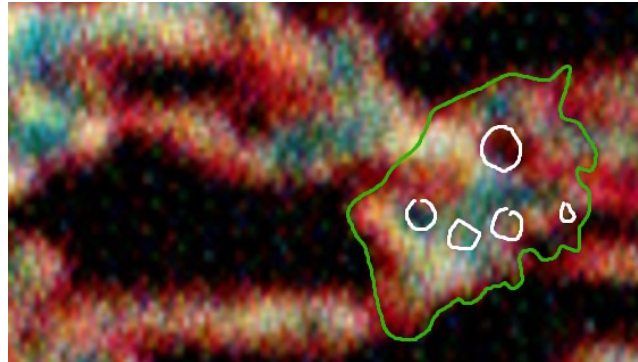
But the fifth option image is spooky. In the fifth image, Gardner's initials have no body, and the image is situated above the mouth of the volcano, roughly 1998 to

2003 –Gardner died in 2002. In the Bible, Gardner becomes a the Beast *in spirit* in 2002 (see page *Revelation 2: The Solutions*, et al, and solution #200, for more). However, I didn't think that meant Gardner could still communicate with the living. But this suggests Gardner was able to speak to Dennis Wilson, from either Gehenna or the Lake of Fire (where Revelation 14:11 seems to suggest Gardner was sent). From the Lake of Fire, I can't imagine Gardner doing anything but crying out in pain –or, if he could muster the strength, taunting Dennis that Dennis was Gehenna bound too.

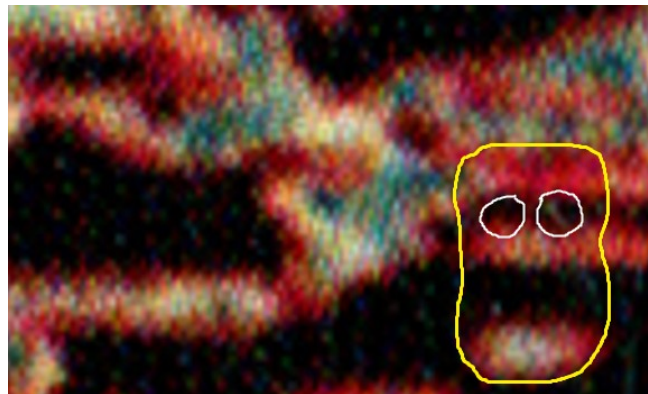
As far as Gardner's illegitimate "wife", represented by the face within the face (top right); here's the story... In the base of the Elder badge, on several occasion, God represents a primary character's spouse by placing a representation of the spouse's faces inside the face of the primary character's larger face. We see this in Dennis Wilson's image (*The Man*), center right. We'll also see this, later, with Marina Wilson's spouse. But the evil skeletal face inside Gardner's representational face is not his wife –it the face of Gardner's homosexual partner, the once unduly famous Milton Friedman. God assures us this representation is Milton by writing "Milton" in faint block letters, to the right of Friedman's chin (bottom left). God further confirmed this by placing a large M on Friedman's evil brow.



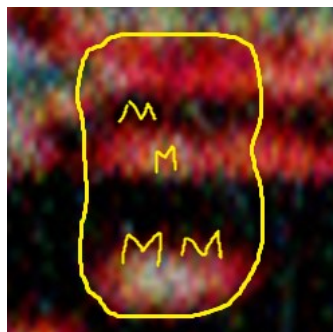
The second human beast, John C Malone, was much less interesting, active and intelligent than Gardner. God reflects this in his Representations of Malone.



In the first representation of Malone, Malone is the small and nondescript cloudlike or gaslike formation, to the right of Satan's mouth.



In the second representation Malone is presented as a dull blockhead, just to the right of his gas-like image. Malone has an unusually squarish head; but God emphasized the square shape to indicate Malone is pretty dull. Some of this dullness may be due to Malone's advanced age.



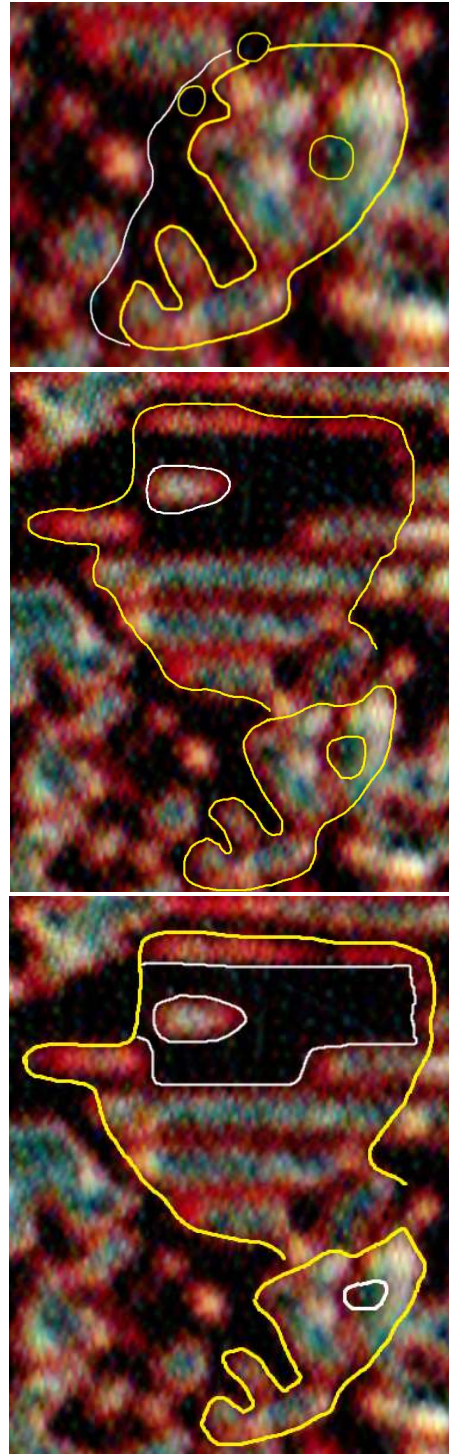
Should anyone doubt the blockhead is Malone. God, again, placed double M's on the block –and two M's on the mouth, to indicate Malone speaks and acts for Satan.

Dennis Wilson's brother, David, is the father of two boys, Michael and Lawrence -possibly even less talented and more effeminate than their father- and all enriched themselves, in service to the beasts, by surreptitiously paying my acquaintances and various family and step-family members to steal my work.

In the base, David Wilson is represented by a laughing male face, top right. The face looks like a man who forces his strident, womanly laughter for the highest bidder.

Just above the the somewhat womanly image of David (center right), is a perfect caricature of the real David, replete with pencil neck, puffy lips and flat head.

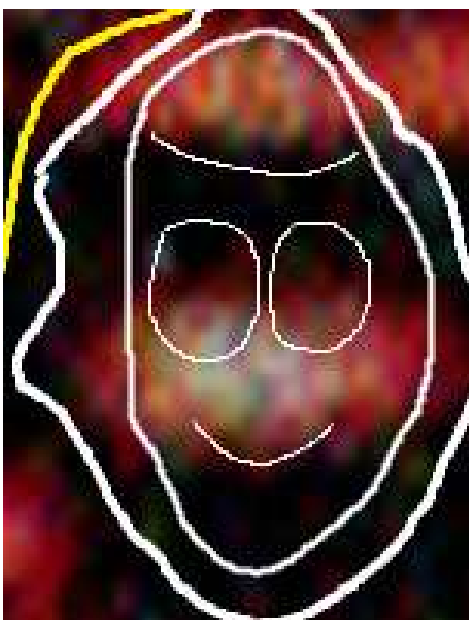
The black area around David's eyes represents a mask, like the masks old-school TV criminals wore. This is how God links David to Satan, who wore the mask in the Mark Crimes Year Key, and how God informs us David is a serious criminal, who has committed many, many Mark Crimes, and helped John Gardner's Hollywood steal dozens of my creative works. God also likely intends that the mask represent a man living with many secrets. One of God' many base revelations is that people who live with big secrets are more inclined to commit crime is.



God's images of David reveal much more, on closer examination. To assure us this image is David, God wrote David's name inside the mask area, in stencil-like off-black markings, which I've outlined/highlighted, below.



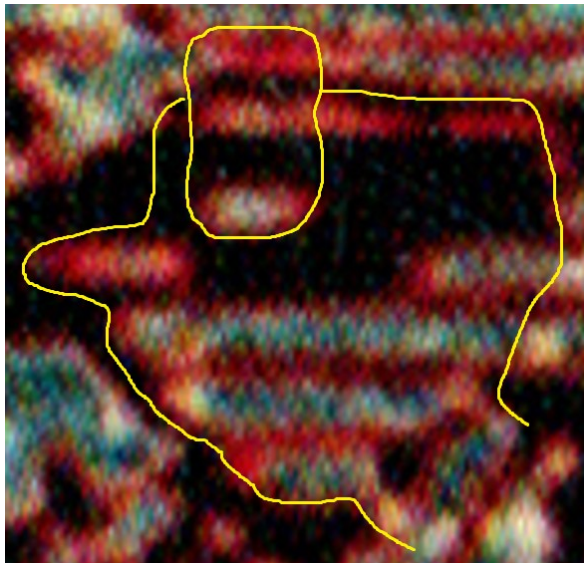
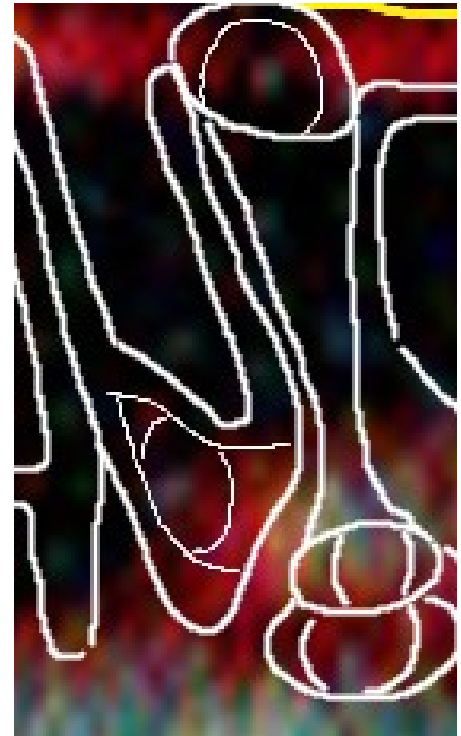
And upon even closer inspection, to the right, we find the first *D* of David's name gives us a glimpse into David's mind, where He views himself as a superior man, possessing a perfectly formed, rounded head –not at all flat.



And upon a closer examination still, you might observe that David's mind and eyes are inordinately focused on men. But, the Elder Badge revelations indicate God does not view David, or anyone else, as a homosexual for having thoughts (although we can be sure that God is not pleased with these thoughts). It is only at the point that a person commits a homosexual act (with another person of the same sex) that God views the transgressor as homosexual, etc.

God will give us a more specific look at David's warped fantasies later.

You may have noticed the *V* and second *I* in David's name have eye-like shapes or symbols. Each of these is called a "One-Eyed Willy". I'll share the history of this soon. There are two kinds of One-Eyed Willys, one represents Worship Crimes violations (such as *Worshipping the Beast*), the other usually represents someone who is preoccupied with (worships) large penises, or who is a male homosexual. The preoccupation with large penises often comes from exposure to pornograph. Because this type of Worship Crime is committed or acquired through our eyes it is also an *Image Crime* -thus, the *I*. Under John Gardner, the new Hollywood porn industry deliberately featured people with unusual body types, to cause people to wonder about other people's bodies, which leads to perversion, and can cause people to become homosexuals.



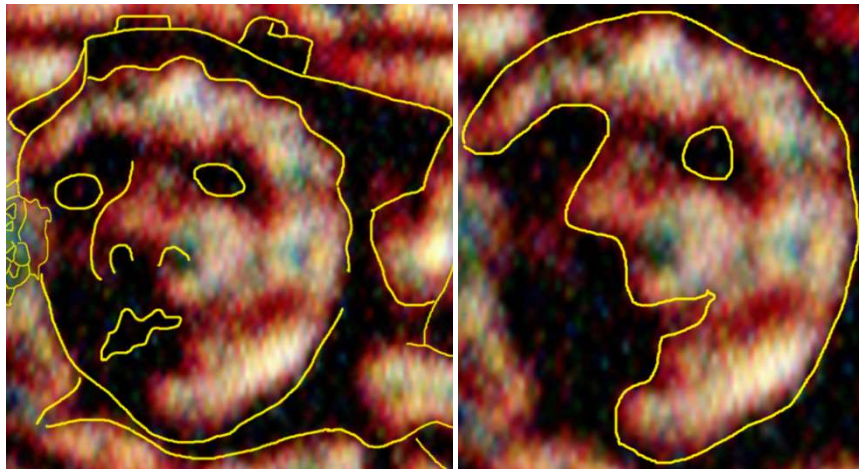
To indicate David Wilson became John C Malone's preferred contact person (once Malone became the new beast, in 2000), God positioned John C Malone's blockhead image overlapping or adjacent to David Wilson's image (see left). God also may have used this positioning to indicate Malone was always *in David's ear*, with new directions from Satan. And, like the well-paid and extremely untalented whore he is/was, David faithfully followed every instruction.

**Mystery Question #5:** So far, in this section we've learn that many members of my family and step-family spoke to the first Beast, John W Gardner, and the second beast, John C Malone. The family members who spoke to Gardner and Malone are/were: Dennis Wilson, David Wilson, Miriam Wilson, Marina Wilson, Michael Wilson, and Lawrence Wilson. The question is: Which of these family members knew they were speaking to one of the beasts of Revelation, who increased God's fury, and contributed to the downfall of the US (and likely brought severe punishment to other Western nations and allies)?

## More Central Display *Featured Violators*

I spent considerable time on David Wilson because his secondary representation helped illustrate how God uses visual representation to communicate. However, although David Wilson is important in the crime scheme, there are at least a few family members, friends and acquaintances who were more important than David. Before I identify the most important players, let meet the rest of the central base cast.

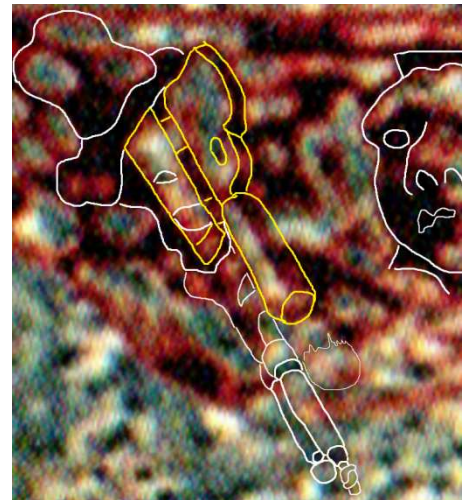
### Dennis A Wilson



Dennis Wilson was my stepdad, whom I loved like a real dad (even used his last name for over 50 years), until 5 years after he died, when I discovered his involvement in the Zodiac murders, and his various crimes against me.

Dennis is represented, above, by the image of the man with a rocky brow, wearing a boat-like hat, who also represents the Beast out of the Sea, and the Beast out of the Land, of Revelation, Chapter 13. Dennis is also represented, in the same location by an image of the moon.

2mm to the left of Dennis is an image of a gun with night-sight which adjacent to a syringe, the tools he used in his first and final murders.

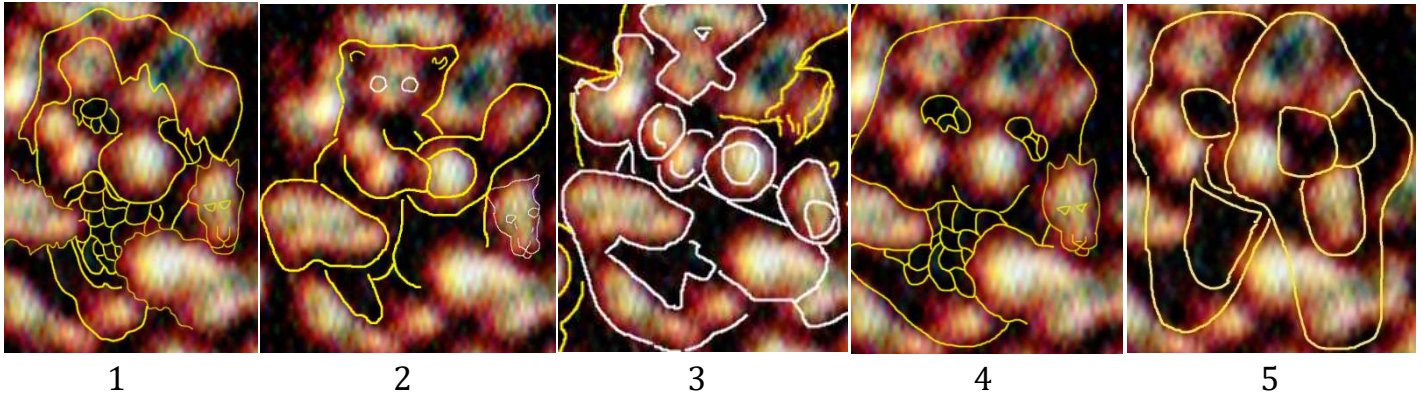


- Dennis Wilson was the primary Zodiac murderer. In the Zodiac's (Dennis') first two murders (of Betty Lou Jensen and David Faraday) he became the first known murderer to kill with a night sight. In the Santa Rosa hitchhiker murders, Dennis injected Carolyn Nadine Davis with strychnine (once frequently used to poison rats).

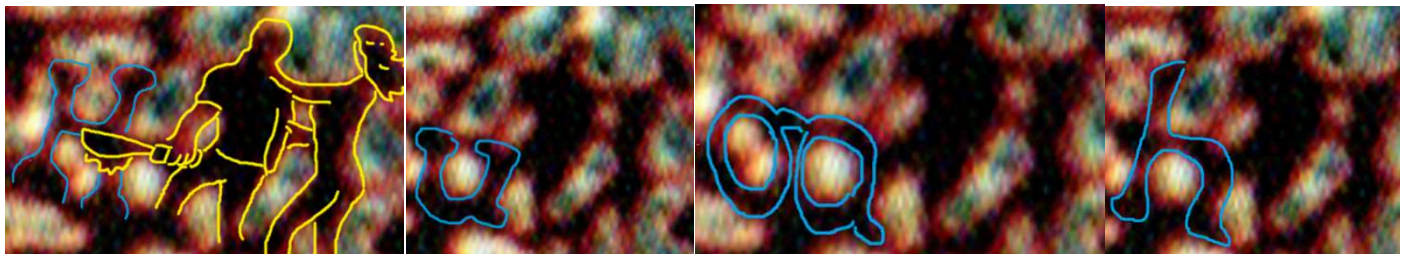
## Hugh Schreiber

Until God revealed, through the base of the Elder Badge, that Hugh murdered four people and committed many Unforgivable Crimes, including facilitating the theft of my intellectual property, etc, I considered Hugh one of my very best friends; probably only surpassed by one person.

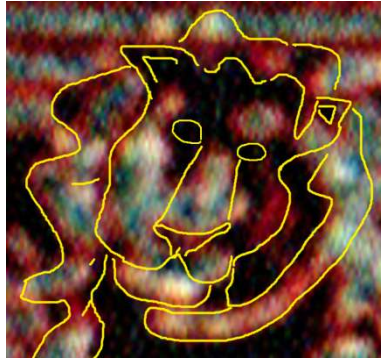
In the Elder base, Hugh is represented by all of the images on this page.



Impossibly, God placed images 1, 2, 3 and 4, above, in the exact same location (sure, image 1 and 4 are basically the same, but the one on the far left feels more explosive).



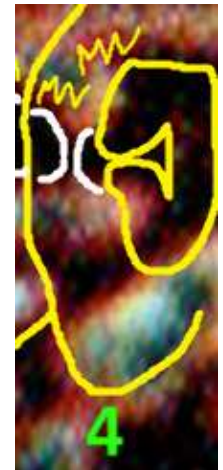
## Marina Hope (Wren) Wilson



Marina Hope Wilson is my younger sister.

Marina plays a huge role in this story, but is only represented by the lion (a fierce predator) and by the image of the dumb loud-mouth, to the right, positioned below Satan.

Marina is unique in this story because she committed a very high number of evil acts intended to get the non-White members of my family sent to Gehenna (Hell) –and she had great success. More horrifically, Marina did this only because Gardner and Malone offered her some money to do so. If ever there was a whore...

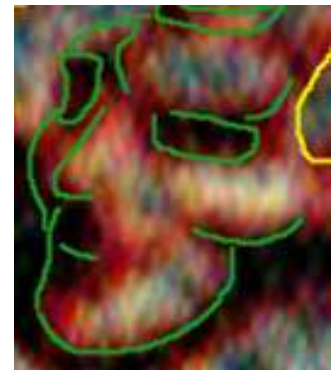


## Pay/Peter Rose

I met Pay Rose (born Peter Rose) in 1993. We were good friends (so I believed) for about a decade, semi-good friends for another few years. A few days after I met Pay, he introduced me to Hugh Schreiber and Max Radcliff. The extremely unflattering revelations God makes about Pay, in the pages ahead, suggest Pay should make drastic changes, immediately.

## James Maxwell Radcliff, III

Max Radcliff and I were in a Berkeley-based rock band for around 2.5 years. I've met very few musicians born with as much music woven into their soul as Max. Max might have done big things if he had some goals and a work ethic –AND if America weren't so corrupt. But Max was just as corrupt as America, willing to betray anyone for some money. Max was paid to help the US music industry get my music.



## Lowell Bergman -And the Bergman-Hoopers

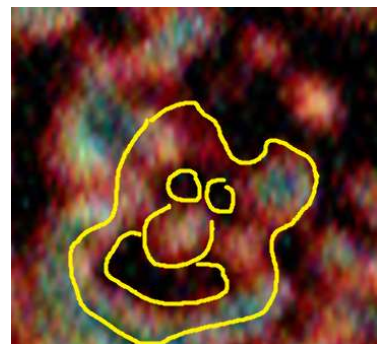
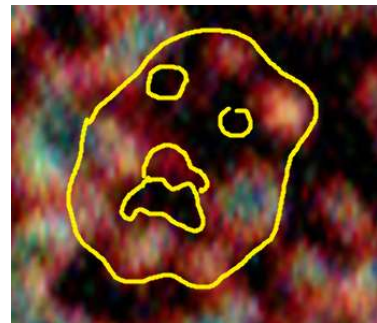
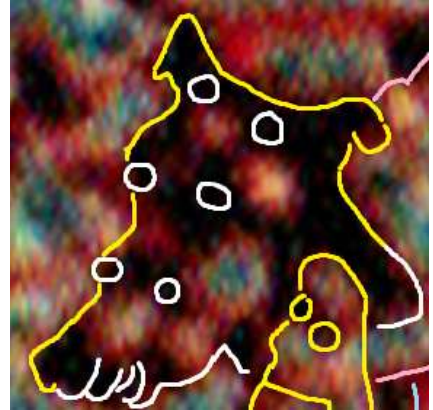
Lowell Bergman is a unduly famous writer, who likely cannot write. Bergman is credited with creating *The Centre for Investigative Journalism* around 1977. Lowell's job was to write skits (which Satan and Gardner suggested), then give those skits to my step-family and acquaintances to execute on and around me. Lowell also wrote falsified FBI stories about me - conceived and directed by Satan. Satan and Gardner also directed disinformation stories through The Centre, designed to distract from America's crimes, and focus attention on crimes and injustice in communist and non-White nations.

In the central display, Lowell and his son, Jake (Jacob), and his stepson, Josiah, are represented by a dog with with three tiers of eyes (top right). The top tier is Lowell, the middle is Josiah, the bottom is Jake.

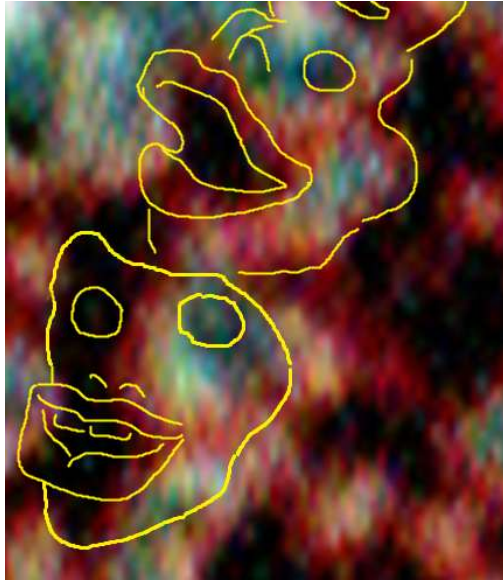
For an extra point of verification, God also included more conventional representational images of the Berman-Hoopers, to the right, with their flaccid penises on their faces. Lowell is the furious face, second image from the top. The image looks very much like Lowell. Lowell showed me some of his FBI files, after hours, at his 50<sup>th</sup> birthday party.

Just below Lowell is his stepson, Josiah (third image from the top). Josiah was the cameraman and co-producer of my film *The Amazing Mr. Excellent*. His real job (for John C Malone) was to sabotage production. Thus everything looks substandard. Josiah's shriveled nose probably means he struggles with impotence. If you read *Origin Stories'* notes, you understand why I have no sympathy for Josiah.

Jake Bergman is on the bottom, right. The image does the talking. Jake's head is shaped like an 8 because his head is actually sort of shaped like an 8.



**Michele Royalty (Joan Wilson),  
And Her Acquaintance**



Michele Royalty  
(Joan Wilson)

My son's mother

Dennis and David's younger sister, once known as Joan Wilson, is called Michele Royalty today (she married around 1997), and represented by the open-mouthed woman (at the top of the image above), seemingly laughing like a villainess.

Below Michele is my son's mother, whose name I will not use. Part of God's message here is that parents and family members must act like adults, and never act to cause a child or family member to disrespect, dislike or reject another family member or parent. My son's mother committed her share of Mark violations, but I believe she has learned, and improved. I believe she is one of the people in this group who God and Jesus will save.



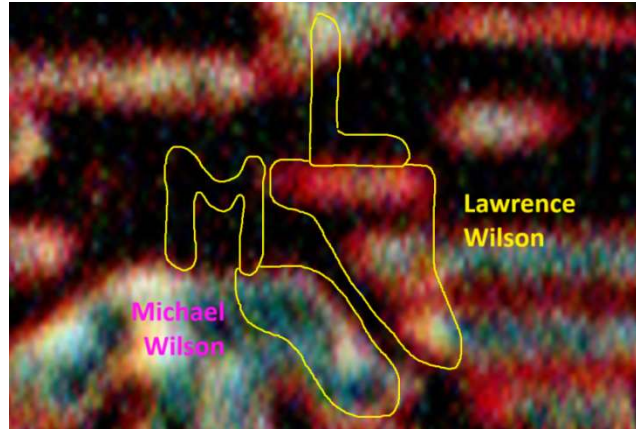
**Miriam Lakawska (lakowska?) Wilson**

Miriam Wilson is a very important character in this story. If you read *My Stepdad Was One of the Zodiac's Santa Rosa Hitchhiker Murderers*, you may recall Miriam helped facilitate some of the murders. Miriam's central display image is a deliberately unclear image of a laughing woman's face, just above David Wilson's central display image (left). Miriam has a few vague images in the central display area, but her true image is hidden in the timeline. I'll reveal it later.

## Hidden Figures

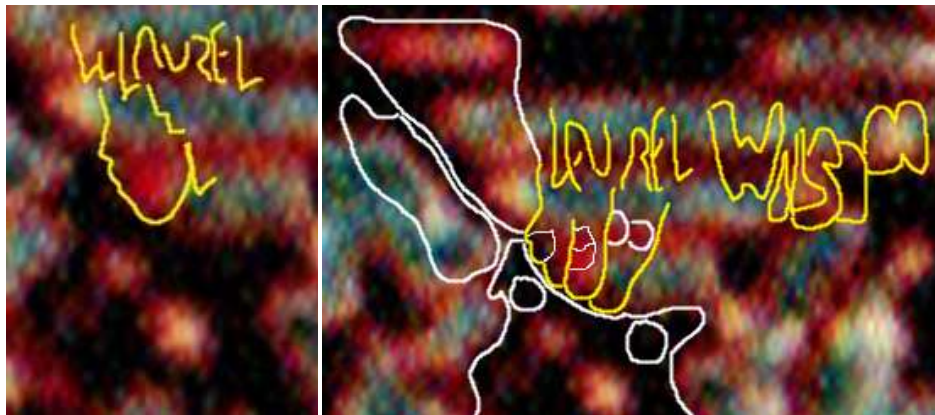
There are at least 3 almost invisible entities lurking in the central display...

### Michael and Lawrence Wilson



David Wilson's sons, Michael and Lawrence Wilson, are positioned just below Satan's hand and mouth, at the top right corner of the volcano, and just above the dog's (Lowell Bergman) ears and eyes. You may have noticed their heads are both shaped like wolves' head. God is saying they are wolves in sheep clothing.

### Laurel Wilson



Michael Wilson's wife, Laurel, works for Lowell Bergman, Laurel is depicted as a red-faced woman (a whore), above right. Laurel is positioned near Lowell Bergman's ears and eyes, and Michael and Lawrence. Laurel's image reduces further into the image of lips of two whores (one Jewish, one Western White) and a wolf. In the image above, right, the black lips are an evil Western whore, the red lips are a Jewish whore. I saw Laurel at Holiday events, maybe twice year, but didn't come to know her. But I think this indicates she's half Jewish and half Western White.

- All of the seemingly handwritten letters on this page are highlighted (traced) letters in the images.

## Mark C

Most Americans have been inculcated, from elementary school, since the mid 1960s, under US Education Secretary Gardner, to do and say what they think others will like. This creates dishonest and very uninteresting people, like David, Michael, Lawrence and Marina Wilson –and like Mark C. Mark C is Marina’s husband. They married around 2020. I have to refer to him as Mark C because I can’t remember his last name. But to his credit, he’s more interesting than most of the Wilsons.

Like some other spouses in the Elder badge base, Mark C is hidden in the central display in the center of his wife’s face (see below).



Mark C, in the center of the lion’s face



Mark C., enlarged



Mark C’s image is really composed of Mark and his daughter by a previous wife, Prya.

God, of course, verified Mark C’s identity. But, because I didn’t know Mark’s last name, God verified Mark C’s identity using many *MC* initials, which tower as high as the lion –because God is traditional, and views men as the head of their household. I make this point because Marina is listed as *Marina Wilson* in this story, because that is the name I know her by –her name for roughly 90% of her life.

To the right, you see Mark C’s initials, all over his face and the lion’s (Marina’s) face. If you look closely, you may notice some phallic shapes. It can’t be a good sign or a affirmation of character when God puts a bunch of flaccid penises in your initials and around your face.

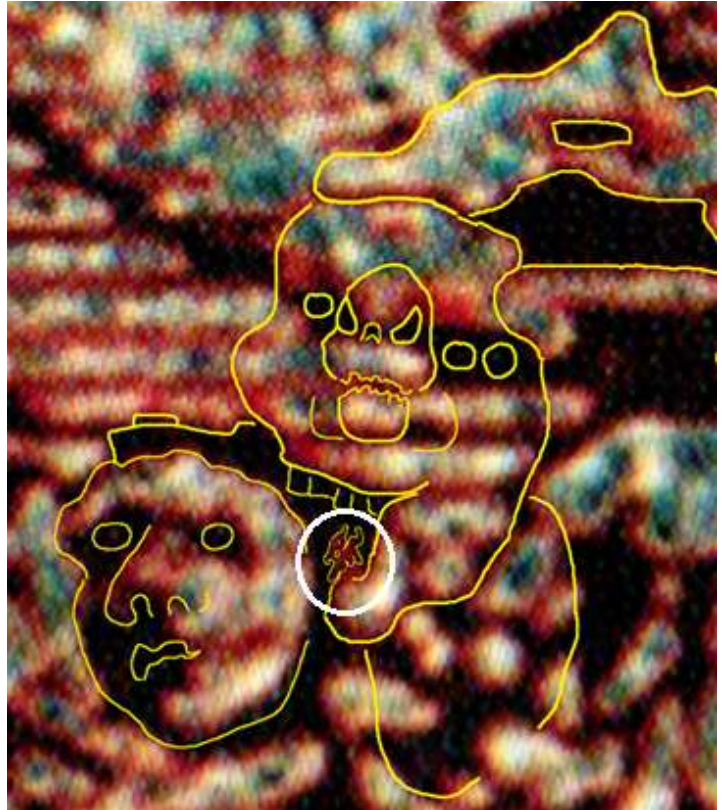


## Not Pictured: **Carl Shapiro**

Carl Shapiro is a very substantial figure in this story who does not have a relatively large image in the central display or the timeline (although there are smaller images of Carl hidden in the timeline –and even in the central display).

### Tiny But Effective

The smallest representation in the central display is a conjoined image of Carl Shapiro, and Lawrence and Michael Wilson, depicted as conjoined red faces, sitting on Gardner's lip, whispering in Dennis and Hugh's ears, to the right, in the white circle. (Hugh's ear is the mouth of the wrench). See an enlargement of the red faces, below.



Because I know the characters, I recognized them almost instantly. In the enlargement to the left, on the top, the elf-ish face on the right of the conjoined red faces represented the elf-ish faces of Michael and Lawrence Wilson. The distorted old red face to the left of the image, with a classically hooked nose, is Carl Shapiro. To confirm things, God put Carl Shapiro's initials in the image at least trice, on the lower left (see bottom left image), and put Lawrence Wilson's initials toward the top, and put Michael Wilson's initials on the bottom right.

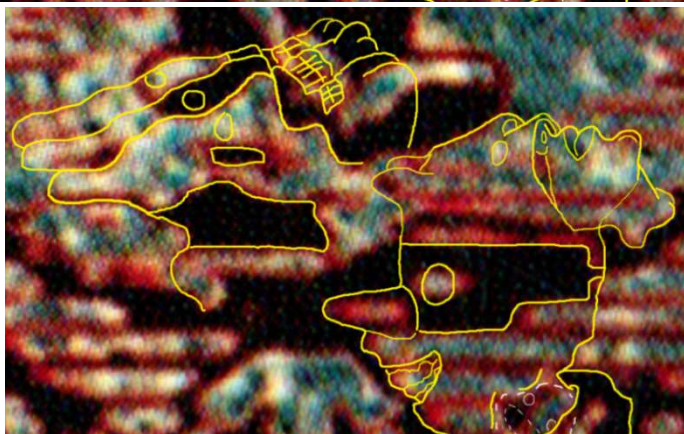
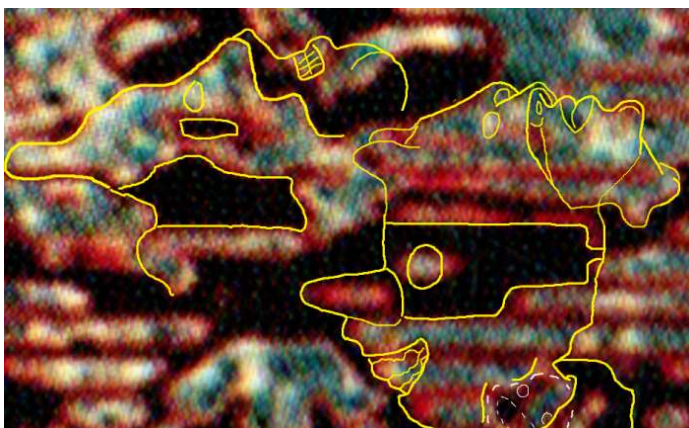
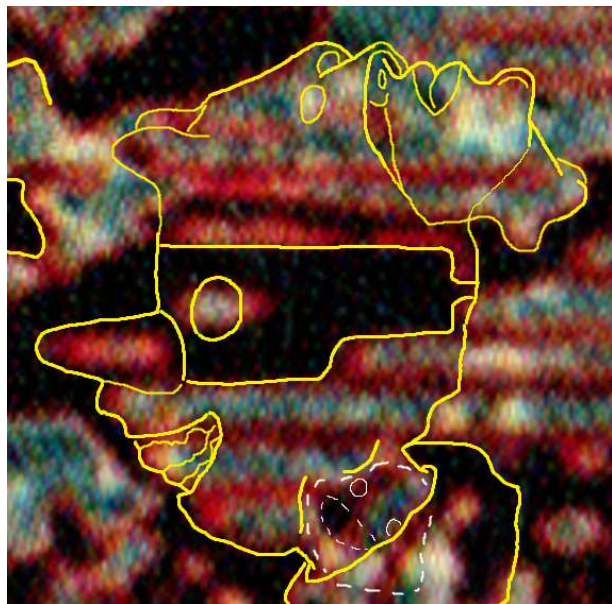
## Revelations of things to Come

Earlier, God drew our attention to David's flat head to reveal David's family's chief source of wealth –helping John C Malone, Hollywood, Silicon Valley and Satan steal my intellectual property, primarily by making MANY, MANY crappy derivatives (copies) of my work. God reveals this, first, by putting a mask on David, identifying him as a thief. Next, God put a beautiful image of Batman on top of David's blockhead. The image of Batman represents Batman of the 2009 film *The Dark Knight*, which heavily stole many of my works' major story-structures and ideas.

To express that Satan and Malone helped Hollywood steal my works and make crappy copies, God shows Satan with the upward facing image of Gardner attached to Satan's head, copying the image of Batman (which, here, represents my original works).

To illustrate that Hollywood, Satan and Malone made many, many derivatives of my work, God depicts Satan, Gardner and Malone using their images to make many bad copies of my beautiful work.

- In this story, images that face up are part of Satan's War Against God. Thus, God is saying Malone and Hollywood stole my screenplays to advance Satan's War Against God.
- Thankfully, God chose to verify my work and ideas, because virtually all US federal judges agreed to accept Gardner's and Malone's bribes to not uphold the law.





**SOLUTION** to Mystery Question #3 [In the image to the right, two Revelation R's, are emphasized with smaller conventional capital R's inside them (minus their lower left leg). What is the meaning here of the two emphasized R's in Gardner's name? ]. SOLUTION: The two emphasized R's refer to John D Rockefeller III, with two R's in his family name (at the beginning and end), who was originally scheduled to become the first human beast, until Satan provoked God to punish Satan and the US, in 1888; thus, God changed the beast (read *The Wagers* for details). Once God changed the beast, several Revelation mysteries became almost unsolvable (such as Revelation 11:12, 13, 14 and 19, which all refer to 1906, the year of John Rockefeller III's birth; these verses were originally included in Revelation to help confirm Rockefeller as beast), until I discovered the change. The *emphasized* R's also refer to Revelation 1:11, where Jesus says, "I am the Alpha and the Omega, the First and the Last,..."; which refers to the fact that Rockefeller's last name begins and ends with R. Placing this clue at verse **1:11** was a visual hint about John D being the third *John Rockefeller* (thus, *John D Rockefeller, III*). The missing legs in the R's is a hint about the two adjacent *l*'s in Rockefeller. The 11<sup>th</sup> verse also refers to the 11 letters in "Rockefeller". Although John Rockefeller III was replaced by Gardner, the Rockefeller brothers (John, the eldest) were the primary financiers of Gardner's schemes (as seen in *Origin Stories*), and Nelson was a friend of Gardner's, and one of the original six leaders of his 666.

**SOLUTION** to Mystery Question #4 [Is there Biblical support for a 4<sup>th</sup> beast (a 2<sup>nd</sup> human beast)?]. SOLUTION: Yes. First, the first beast is the Beast Out of the Sea – the Holy Roman Empire; the second beast in the US, the Third beast is John W Gardner. The fourth beast comes to our awareness through the same process as the second false prophet of Revelation: In Chapter 13, a false prophet (Martin Luther) is introduced, but later a in verses 16:13 and 19:20 an unnamed "false prophet" is mentioned, who initially appears to be Luther, but upon examination proves to be Oral Roberts (see *Revelation 2: The Solutions*, solution #218). Similarly, concerning the fourth beast, in one of the same verses, 16:13, an unclean spirit is seen coming out of the mouth of the beast; however, the original human Beast, John Gardner, died in 2002, which correspond to verse 13:18, while verse 16:13 is situated between 2023 and 2029–when Jesus' Second Coming ends. Thus, Gardner was dead, with no body for his soul to exit. Thus, the beast of 16:13 is another person –John C Malone, who I have identified as the probable new leader of the 666 since 2023.

**SOLUTION** to Mystery Question #5: [*Which of my family members knew they were speaking to one of the beasts of Revelation, who increased God's fury, and contribute to the downfall of the US (and likely brought punishment to other Western nations and allies)?*]. SOLUTION: [NOTE: This mystery probably cannot be independently solved by readers without reading *The Wagers*.] None of my family or step-family members knew they were speaking to either of the human beasts of Revelation –Satan's minions. And, no one on Earth but the primary Beast (John W Gardner), and the secondary beast (John C Malone), ever knew they were were speaking to the either of the beasts –with the exception of the Rockefeller brothers, whose support gave John W Gardner wings. <sup>3</sup> In *The Wagers*, I explain that God and Satan made many Wagers, leading up to the final *Revelation Wager* (1888 to 2025). God allowed Satan to know, beforehand, who his minion beasts would be. The beasts' identities were essential secrets of some of the most central and captivating mysteries of God's Book of Revelation; thus, Satan and his minion beast were sworn to secrecy – vows that, if broken, would have terminated the Wager, resulting in victory for God, and would have immediately ended the beasts' ability to confer with Satan and execute Satan's will. Because we see Satan carried off to the Bottomless Pit (Revelation 20:1-3) just after the beast is defeated by Jesus (Rev 19:11-21), we can surmise that Satan was only allowed to remain on Earth for the duration of his beasts' run. From this, we can also conclude that if the beasts revealed their identity, Satan would have been sent to the Bottomless Pit early. In *The Wagers* we see God give Satan 2 or 3 test *walk-throughs* of the years 1888 to 2025, allowing Satan to see all events, 1888 to 2025, several times, before the actual Wager began. During those test walks, Satan saw that neither of his minion beasts revealed their identity as *beasts* (with the permitted exception described in the footnote below); thus, Satan agreed to the final Wager terms. John C Malone *officially* became the second human beast of Revelation (and fourth overall), after I revealed him as the probable new leader of the 666, in 2023, in *Revelation 2: The Solutions*. In June 2025, in an update of the first edition of this Notebook, I indicated Malone was the second human beast of Revelation (4<sup>th</sup> overall), depicted in Revelation 16:13 and 19:19-20.

---

<sup>3</sup> In my Revelation writing, I have alleged that God has communicated simple expressions to me, in the form of a curtain, since July 2024, and that His communication has been deliberately unreliable since about September 24<sup>th</sup>, 2024. However, He is clear when He needs to be, and somehow I know these rare moments. That said, one of the very few (perhaps the only) Revelation related clarification that God gave me was that the Rockefeller brothers were the ONLY people who knew Gardner was the Beast (thus, they financed all of his pursuits). God affirmed this in response to my question(s), twice. This revelation does not flow from the Revelation text or from any other mystery, large or small, that I have solved. God would only reveal this to be clear that NO violations about revealing the Beasts would have been allowed –this means God allowed Satan to direct Gardner to pursue financing from the Rockefellers, and reveal to them -and only them- that he was the beast, able to speak to Satan. Gardner likely proved this with a demonstration similar to the one he gives Hugh Schreiber in Chapter 10. The Rockefellers would have been sworn to secrecy, but with the test *walk-throughs* that God gave Satan (described above), Satan knew the Rockefellers would remain quiet.

# Between the Lines

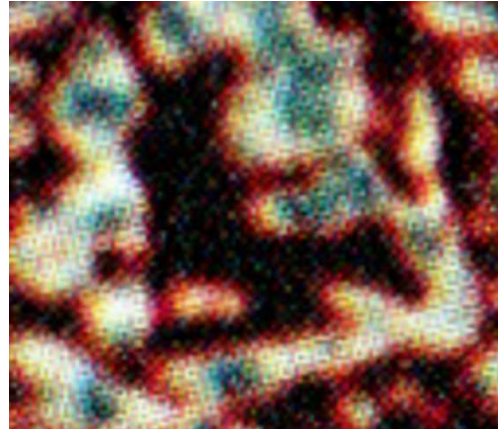
## iv

### Rick (AKA Rich)

If you read *Killing Guadalupe*, you may recognize the top two images, to the right: a silhouette image of my best friend Rick (nowadays he prefers to be called Rich), *The Rider*, who loves to ride or drive anything that moves, alive or motorized –as long as it’s fast.

Rick’s image is different from most other images in this Notebook: He’s one of only two actual people (as far as I know, currently) pictured in the mantle of the Elder Badge, which represents Heaven. That means he’ll make it into Heaven, although as I write this, October 2025, he’s alive and well.

Rick took some lumps as a kid, and may have had some other innate challenges, so by the time we met, when we were 12 (born on the same day), he got in more trouble than most kids. He was also eager to take almost any drug he could get his hands on by the time he was 13 or so, around the time he was beaten so severely by his mother’s latest boyfriend that he ran away, and shared a room with me, at my house, for the next two years. Back then, I had a dozen people caution me about Rick, branding him a troublemaker or whatever. But Rick was a great friend. Back in elementary school, I used to fight for my friends, if anyone messed with them. But Rick was my first and only friend who would also fight for me –although I’m happy to report we never fought anyone else together.



Rick was a skilled carpenter by the time he was 19. But since he had dependency issues, he spent much of the next 25 years in and out of jail; sometime for *possession*, sometimes for dealing.

Before this Notebook is finished you'll meet plenty of White people and Black people who betrayed me for money –including most of my family members. And later, they'd effortlessly smile in my face, as if they had done nothing wrong.

Many people born outside of the United States and the West will read the previous paragraph and gasp, “His own family?! His Friends?! How is that possible?”

Under John W Gardner's lead, the US used advanced profiling and conformity modeling, in media and schools, to condition Americans to do what is in their self interest, or what pleased the common majority, rather than adhering to standard values, like the Golden Rule. As a kid, when Rick's mom or whoever taught him to treat others fairly and look after your family and friends, he took that to heart, and he wouldn't unlearn it just because his teacher gave him a disapproving look in front of the class. But minus Rick and me, almost everyone else you meet in this Notebook compromised what they professed to believe, for money or approval –usually both.

Rick is White. And he paid a heavy toll for not profiling as a person who would betray his values, friends and family, for money and approval. Rick has five times more street sense than your average user/dealer, and ordinarily would never have been caught for his drug-related indiscretions. Yet, from the time Rick was 15 to 45, he was in and out of jail; somehow he was always caught. All of those arrests were because he was flagged as an *outsider*, not *on the team*, too ethical, so he had to pay.

In the lower right corner of the previous page, you may have noticed the image of me and Rick. In the image of Rick (enlarged to the right), the head growing on the side of his head represents inner demons and issues he had to overcome. But in the eyes of that figurative head are people Gardner paid to watch Rick, and report him, and sabotage him. I believe the man in the left eye is Rick's stepdad (who adopted him) and the little girl in the right eye is Rick's younger sister.

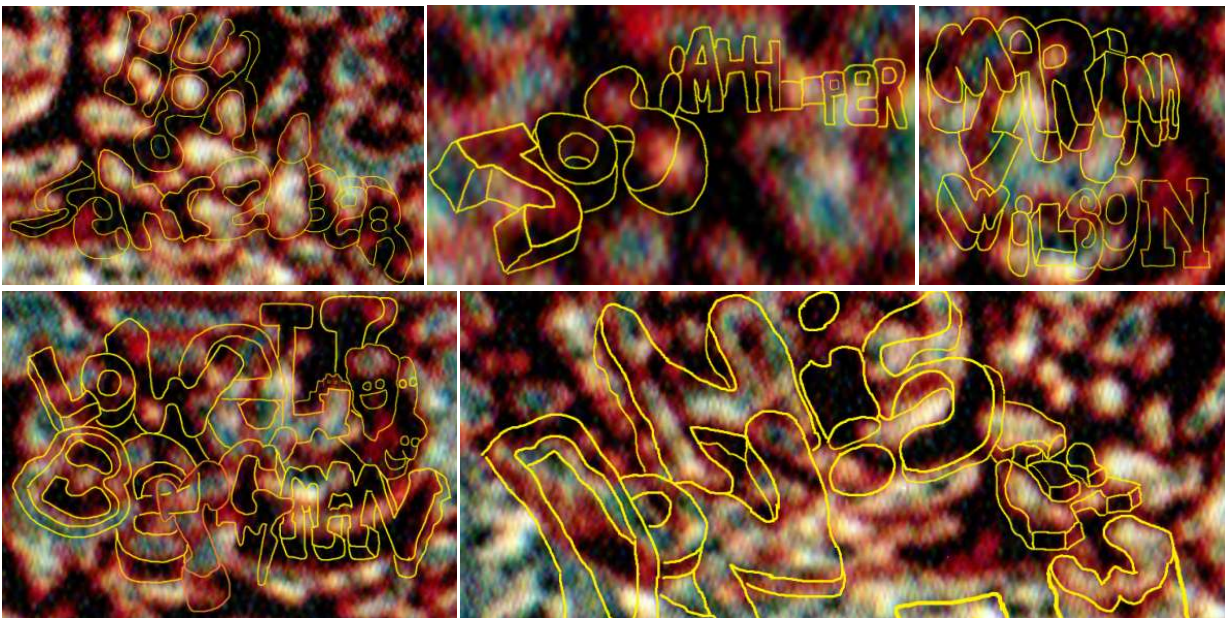


# 5 The Central Display Names

**WARNING:** This chapter contains many graphic images, not suitable for children (or anyone).

Before we can see the criminals and stolen works in the Crimes Timeline, we need to see the central display violators' and criminals' names in the central display area, because the central display names help establish certain rules, key issues, etc.

All of the people in the central display area are named at least twice in the timeline –most of them are name many times. The reason the display criminals and violators are named at least twice is because in addition to the places in the regular timeline where God attaches their names and crimes to a date year, God wrote their names in the central display area, to confirm the identities of the violators' representative images (just in case any of you doubted me in the previous releases of this Notebook). In fact, God wrote most of their names more than once in the central display area, for confirmation.<sup>1</sup>



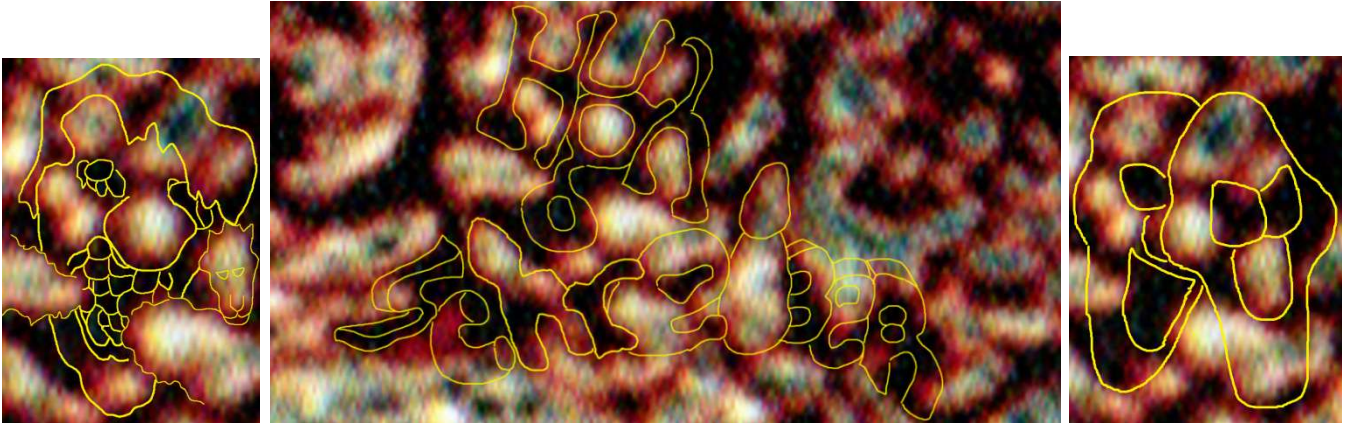
Central display names differ from timeline names in at least one significant way: the size of the person's name is very significant in the timeline (timeline names of very important players can be as tall or taller than the base display board); whereas, with central display names, which are only there to confirm the identity of the image, the size of the name and lettering is not important.

Presentation of the central display names begins on the following page.

---

<sup>1</sup> However, I only made one tracing of each name –there are too many names in the timeline and too many repetitions. It could easily take the rest of my life to dig out all of the names, titles and alternative confirmation letterings.

## Hugh Schreiber



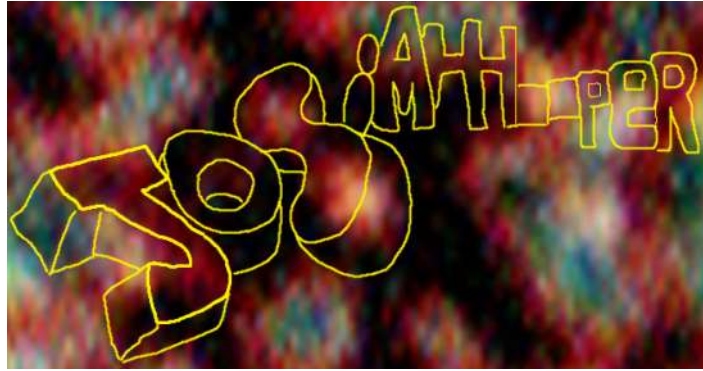
Some of you may have noticed the object dotting the “i” in *Schreiber*, above, looks very similar to the representational nose on Hugh’s representational face, in the leftmost image, which, as you learned in chapter 5, is a fairly accurate representation of Hugh’s flaccid penis. This sort of profane expression is clearly an expression of God’s anger. Similar expressions will follow. Hugh has many name renderings in the Timeline board. The rendering above is NOT his primary rendering; that’s several chapters away. Above, Hugh’s name is lowercase, and not too complicated. Thus, Hugh likely just agreed to simple bribe arrangements.

## Lowell Bergman



Lowell Bergman’s name is an odd mix of uppercase and lowercase letters. God rarely does this (usually all caps, if the person, message or stolen work is significant, or capital first letters followed by lowercase letters). The great variation in style and size is also not typical. The child-like art around the final L is also somewhat unusual. God often makes character revelations in his name revelations. Thus, here, God is likely saying Bergman’s mind is simple, childish and chaotic.

## Josiah Hooper



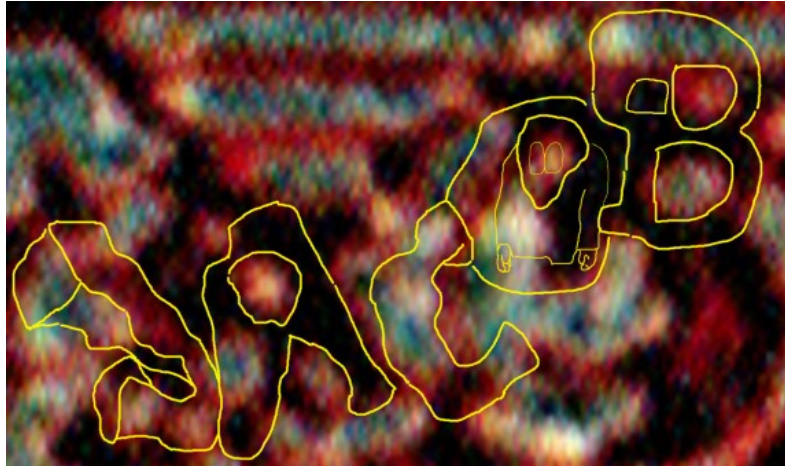
Josiah's timeline name is one of the most unusual name presentations in this Notebook, the first half is large with some complexity (cubed lettering), then, midway through the first name, the lettering severely decreases in size and complexity. God may be saying a few things, such as Josiah is given to mood changes. Josiah confided in me around 2023, that he was a recover substance abuser; the lettering may reflect that. In chapter 4, Josiah's nose presented as shriveled, which may have been an indication of impotence. The Rendering's structural change could also be intended to reflect this.

## Michele Royalty (AKA Joan Wilson, J Michele Wilson/Royalty)

Michele Royalty appears in the timeline under at least two names. Like most people in the Crimes Timeline and the display area, God made several versions of her name; two are presented to the right. The bottom rendering will be analyzed in *Between the Lines xii*. The rendering on the top suggests Michele's crime involvement was very substantial, but not complicated. She agreed to accept money in exchange for services.



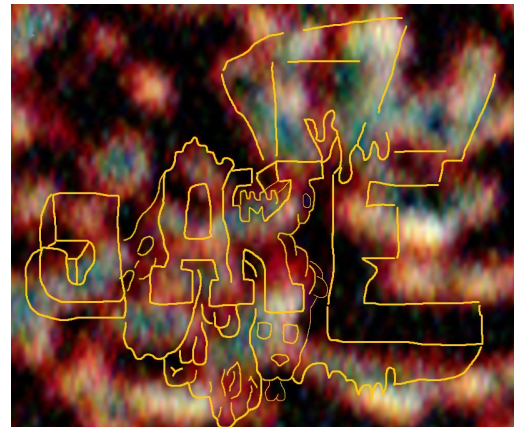
## Jacob Bergman



1

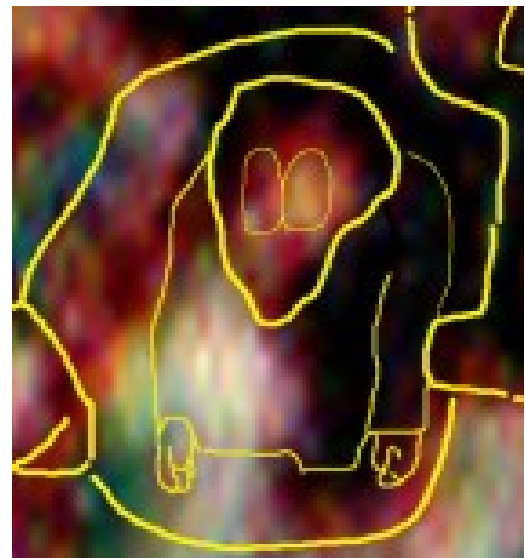


2



3

Since Jake's name is right next to his father's name, I opted not to trace Jake's last name. I did image 2 and 3 first, before deciding I should check his given name, image #1, at the top, which felt about right. This is where I first learned God rendered most of the names under shortened forms, if I knew the person by that name, but God prefers to render Jews names, his first tribe, by their given names. The things that's interesting about Jake's name rendering is it feels as if God is disappointed with Jake – but he still has a shot of making it into Heaven.



Now we move to the worst of the bunch, Miriam, Marina, David, Dennis...

## Miriam Wilson

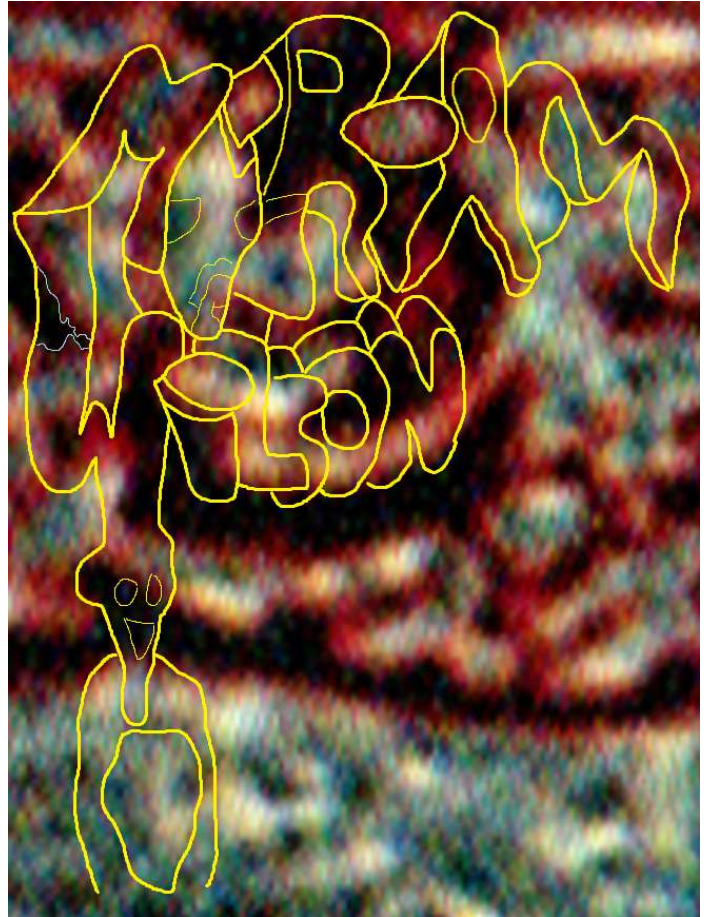
The high complexity of Miriam's name rendering, right, indicates Miriam was more deeply involved than most. From the complexity, of the first 6 names, I'd guess only Lowell Bergman may have been more deeply involved. The thing to notice is: God makes the lower right *haunch* of the *W* dip down into the blue and touch a face, with a finger that points down –toward Gehenna.

**NOTE: God dipping a letter of a person's name into the blue usually indicates someone is secretly homosexual (or LGBTQ); but sometimes God uses the blue perimeter for further revelation.**

In this case, we can be fairly sure God is revealing Miriam is LGBTQ, because: (1) In the left arm of the *W* of *Wilson*, there are two people kissing. They appear to be two women. God colored the women in rainbow colors to address His anger about Satan and the LGBTQ world stealing and corrupting his symbol; (2) God's rendering presses the feet of the first *M* against the tops of the *W*; thus, God confronts Satan's and the US/West's efforts to attack Him by encouraging **M**en to behave as **W**omen, and *visé versa*.

## Marina Wilson

To the left, God depicts Marina's involvement as somewhat complex –some cubed lettering. Simultaneously, God reveals Marina's underdeveloped, selfish personality with a lettering design you might expect from an 11-year-old child.



## David Wilson



In chapter 5, God gave us a glimpse into the inner-workings of David Wilson's mind. God does so again here... Throughout the image you see phallic shapes, penises, mouths with penises in them, ugly men dressed as ugly women... But despite all of this, no part of David's name touches the blue periphery; thus, David has never acted on his many gay thoughts, so God does not view David as Gay. The reason this matters is: many people who have gay thoughts may feel their thoughts disqualify them from Heaven. Not so. God shares this to encourage people to abstain from acting on any LGBTQ thoughts, and they may make it into Heaven (and remember to do good works).

As for David's dream... God discloses that David is one of the few people who knows the true story... In the upper right corner his dream begins, where back in 1968 David learned of a little half-Black boy who's creative IQ tested higher than any person ever (expressed by the very artistic image of the woman in the boy's mind). So David helped John Gardner suppress the story. But David over-focused on the creative boy, which eventually altered David's homosexual thoughts, and eventual David began to dream having homosexual sex with Black men (reflected in the Black man in the lower left, with penises all around him).

- God tips us that the boy is me by making the boy's head sort of *eye*-shaped –earlier I explained that when I was around 13 I acquired two Image (eye) Marks/violations.

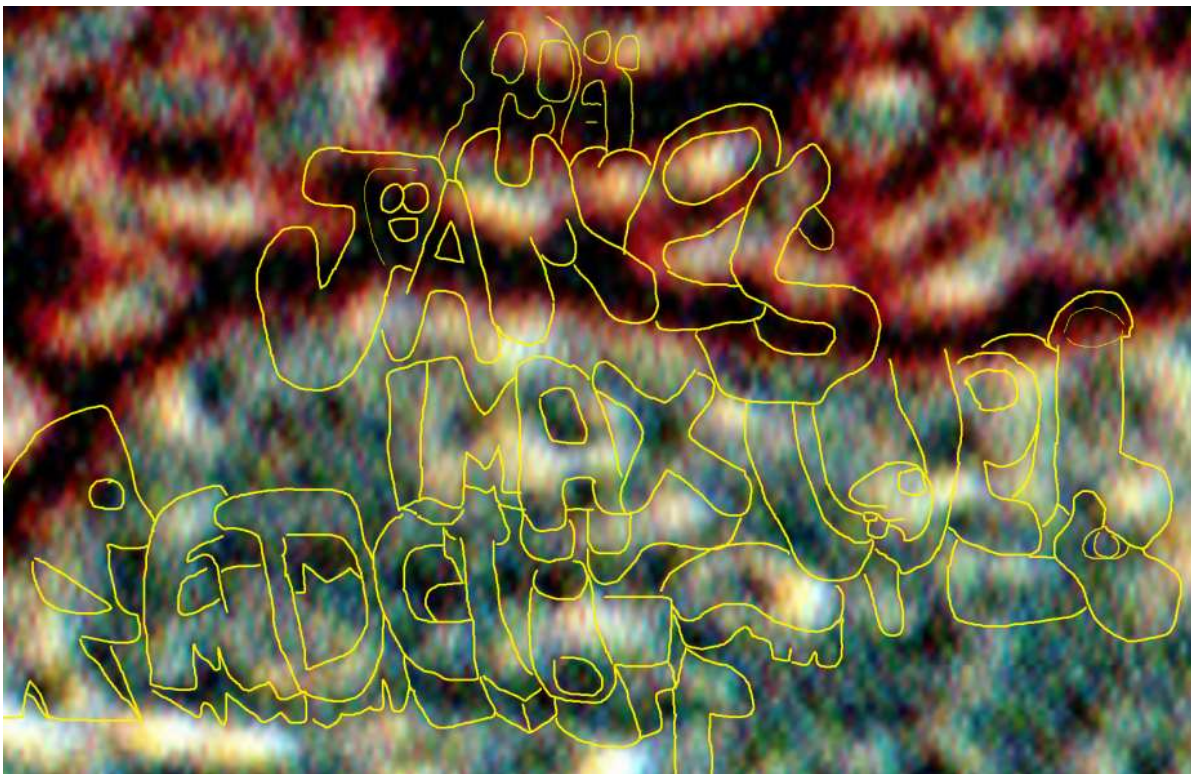
## Max Radcliff (AKA: James Maxwell Radcliff, III)

I view Max as a piece of shit. My opinion of Max was higher back in the 1990s –before he said some offensive and semi-gay things to me, between 2007 and 2020, in some of Malone’s tragically stupid *skits* (which, at the time, I didn’t know were skits –I just viewed them as very



peculiar incidents). Away from the stupid comments, my beef about Max was he was impossibly lazy –almost as lazy as David Wilson and his sons. Usually, that sort of listless approach to life is a choice, a preference for inactivity.

God’s name renderings reveals is a huge homosexual –or bisexual with a strong preference for men –and some gross fetishes. Below, at the top, in the center of Max’s true first name (James) you’ll see Max’s tongue in someone’ butthole. Gross, but the image complexity suggests Max was deeply engaged in intrigue. Max’s greatest value was helping Gardner steal my songs.



## Mark C

Another necessary but disturbing revelations in the central display is that Mark C -Marina's husband- loves giant horse dicks in his mouth and butt.

You doubt?

See the outline below, and check it against the enlargements at the end of this Notebook. God depicted Mark C happily filling his greedy mouth with a horse dong.



Around Mark's image God put the initials MW (see below). MW are Marina's initials, so this could be an insult. But MW certainly stands for *Mark of the West*.



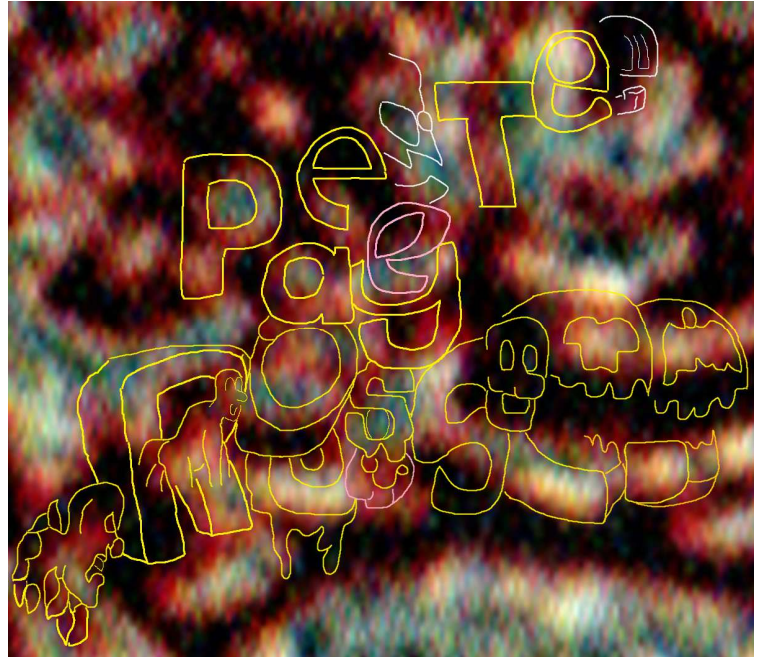
In the West, LGBTQ people can marry (although, not in one of God's true Churches). However, most LGBTQ people understand that many heterosexuals find LGBTQ sexual habits distasteful, if not disgusting. Thus, rather than being looked upon with disfavor, many LGBTQ people, like Mark, marry a heterosexual partner, but have their true homosexual encounters and relationships *sub rosa*.

## Peter (Pay) Rose

The revelations about Pay are pretty terrifying, and should concern everyone, everywhere.

I considered Pay Rose a friend from 1993 until around 2010. I didn't consider him an enemy until 2025, when I learned that he sold my ideas, music and information about me dozens of times. Around that same time, mid 2025, I learned that Pay, once very manly, and good with the ladies, had become a homosexual.

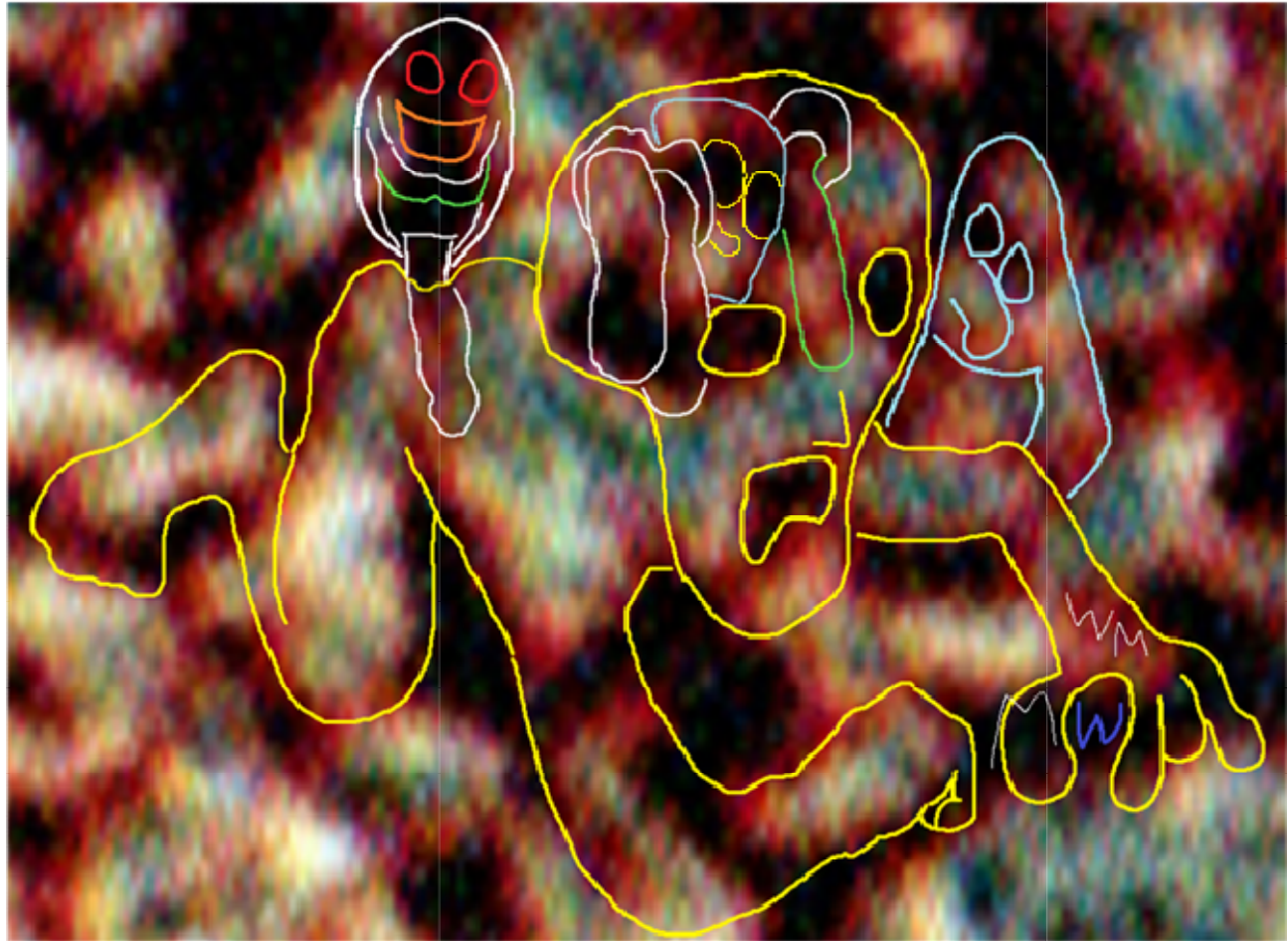
To the right, by placing Pay's name near the blue periphery, but not letting any letter touch the blue, but showing many graphic images of butt-sex in Pay's central display name, God was indicating Pay was very gay. But I wasn't sure why God didn't plunge one of the letter's of Pay's name into the blue -until I found the image of Satan and cable pioneer John W Gardner pumping a big cable penis in Pay's buttock (image on the next page).



The images to the left and right are enlargements of parts of Pay's central display name, above. The rendering has creative elements, and lots of gross and childish stuff, indicating Pay was very involved and aware of the crimes. God spells Pay's name many ways because Pay finds it interesting that his name can be spelled over 20 ways.

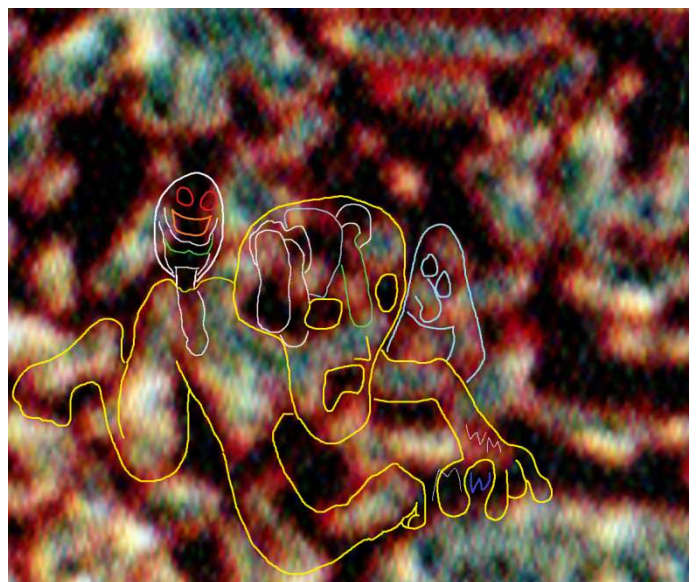


- **WARNING: On the following page is a graphic and disturbing image, rendered by God, which confirms the fact that Pay Rose, like millions of Americans, was transformed into a homosexual by US cable and internet companies, who use pornography and other inappropriate programming, to normalize the abnormal, to alter human sexuality, at Satan's command.**



Now, having butt-sex with men with big penises is all Pay can think about. Look at the images in Pay's mind: penises, left and right, and a guy in the center trying to act straight, with two black eyes (guilty of Image and Mark Crimes). The *M* and *W* on Pay's hand represent Satan's endeavors to alter the sexual orientation of **M**en and **W**omen, the *Mark of the West*.

To the left, you can see the image is right in the center of the central display area, and as big as the lion. God is saying the West's efforts to turn the world and its own people into homosexuals, and damn the world with over 40 new Unforgivable Crimes, is a global emergency and represents unforgivable crimes against God and man.



## Dennis Wilson

From the time I was 4 years old, in late 1968, to the day Dennis Wilson died in 2019, I loved him like my own father, and used his last name as my own for over 55 years –until a few years after he died, when I learned that for 5 decades Dennis Wilson used me as a cash machine and committed countless crimes against me, in service to the beasts, Gardner and Malone.

For most of my life, I viewed Dennis as the most masculine man alive. He was, in fact, very masculine, a great car mechanic, great with heavy equipment.



No one in Dennis' family or community would ever guess he was gay –well, bi-sexual, since he married twice and had 3 biological kids. Dennis was not the stereotypical promiscuous Western gay man. Dennis preferred one long-term secret partners, whom Dennis felt strong loving feelings for. Dennis' first secret partner was Lou Niebauer, co-owner of the Forestville Garage. A few year later, Dennis' new secret homosexual partner was Tim Coffey, co-partner of Wilson Engineering. Dennis went into business partnerships with both men, so they could have afternoon butt-sex in their office. Retrospectively, the signs were there: the bed upstairs at the new office, the Vasoline lubricant containers upstairs and down...

Six years after he died, while working on the image at the top of this page, I learned Dennis Wilson was homosexual (LGBTQ). While outlining these images, usually I was able to see the image; but this time I couldn't quite see the image, so I just followed the lines... Until... Two images of the same person: the large face to the left of the name, and the cartoon image below, both reveal one man who loved to suck penis. <sup>2</sup> In the bottom image, God portrays Dennis as a *penis junky*. God was saying that without Gardner bribing Dennis to take harmful actions against me, Dennis would be a drugged out dick-sucker (although God might not swear). The high degree of image complexity suggests Dennis was deeply involved in the crimes.

- The image above was the first link in discovering that God designed the art in the elder base to reveal LGBTQ violators, with help from the blue periphery.

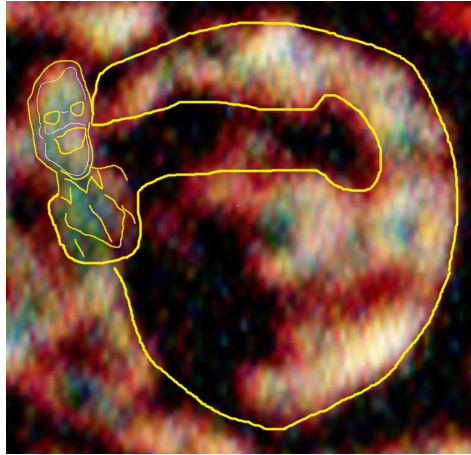
---

<sup>2</sup> The oral sex images may be metaphors for butt-sex. While tracing these images I grew increasingly uncomfortable with all of the penises, and told God that I worried the images might give me or the readers *a Mark*. Quickly the penis images were replaced by oral sex images (where most of the penis is not visible). Thus, in the pages ahead, you will see progressively fewer penises.

To confirm Dennis Alfred Wilson was homosexual, or LGBTQ, and preoccupied with penises, God included the following images.



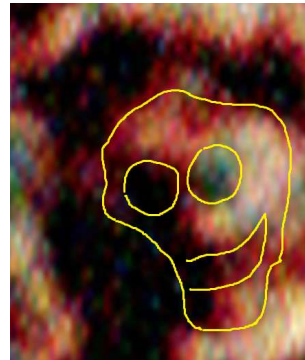
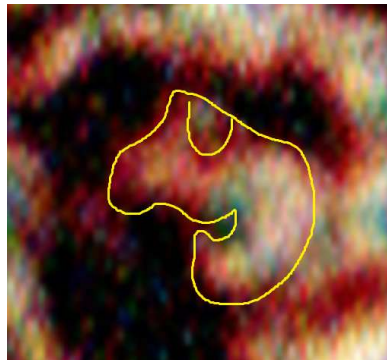
In chapter 5 you saw Wilson's central image is also a crescent moon. The upper tip of the moon deliberately resembles a penis, to say Wilson had penises on his brain



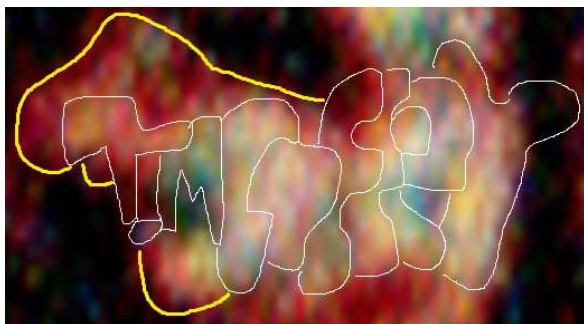
In Wilson's forward-facing central image, God darkened the eyes, so the shape can resemble a penis -with John W Gardner, who pioneered America's cable and porn industries, to the left.



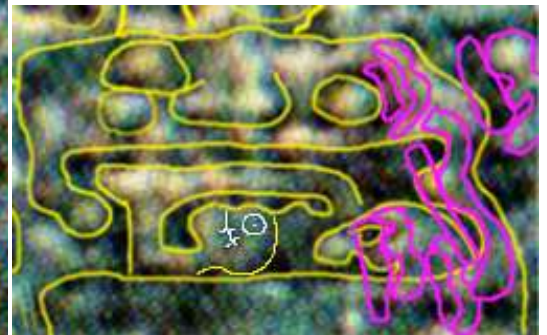
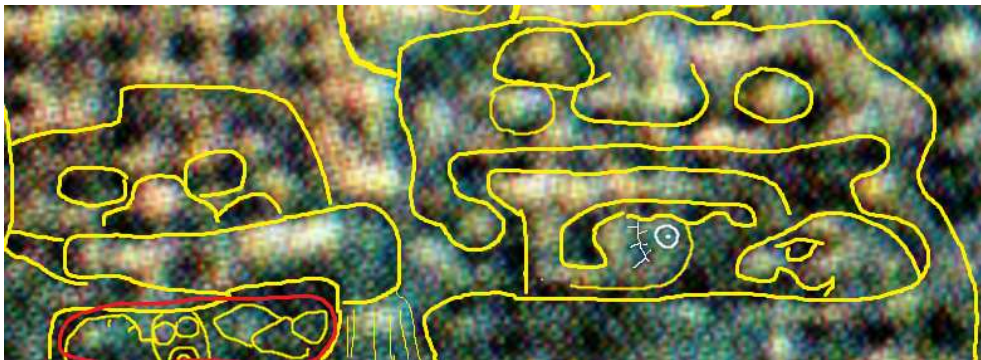
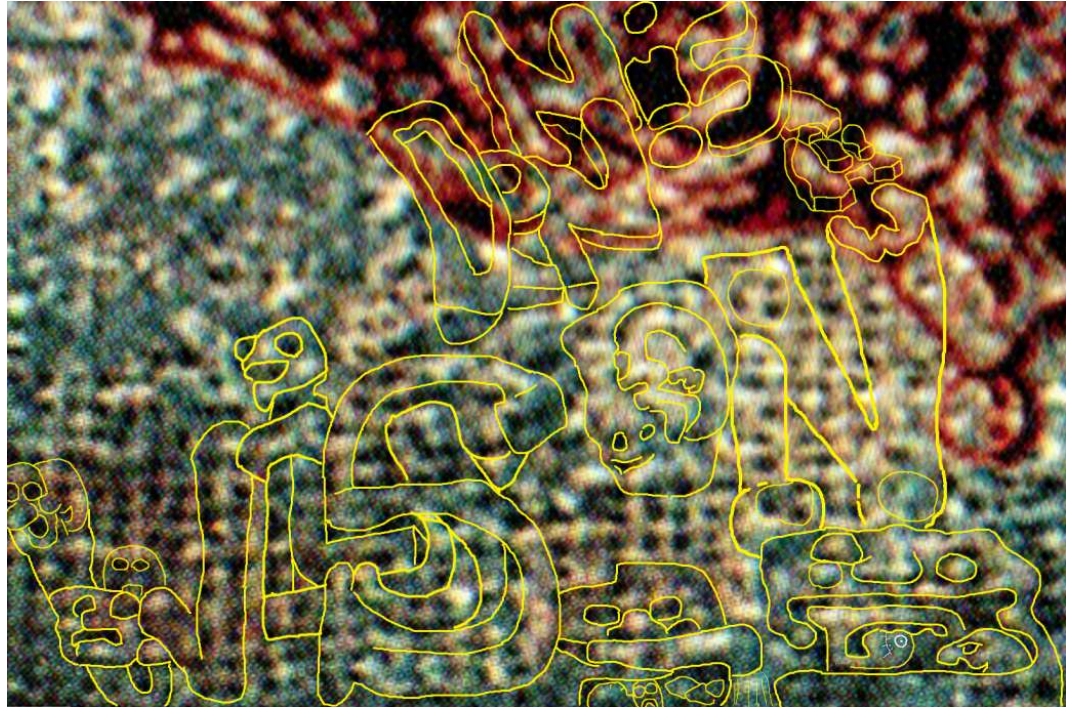
God also included this image of Dennis Wilson sucking pipe -with Dennis and his young daughter Marina where the testicles should be.



To confirm that Dennis loved Tim Coffey, God included the images above, showing two "spouses" in the center of Dennis face. And, as you see below, God also wrote the identity of the spouses in or beside their face. Tim Coffey is the figure on the left, above and below; Dennis' wife, Sara Wilson, is the figure on the right, above and below.



God also made the rendering of Dennis Wilson's central display name, to the right. There is too much in this image to explain. But the lower right corner confirms a lot.



Above left, the enlargement of the lower right corner of the top image shows the faces of dead people Dennis Wilson buried on our property. 2 or 3 bodies were buried under water pipes beneath a patio (thus, water flowing from the pipe). The large object on the right represents a toilet with a tank in it. The water from our toilet led to a septic tank, where Dennis deposited the remains of a woman's body. Above right, there are five 13's (in pink) in the image, to confirm 5 bodies were buried on our property (13 = M = murder x 5).

The images below are words you should be able to see in enlargement above, confirming 4 bodies were buried around my room -1 in the septic tank, 3 in the ground.



## One-Eyed Willy!!



If you are a man who spent an afternoon or two with Dennis Wilson and Tim Coffey, back in the 1980s, you may have heard an off-colored reference to *One-Eyed Willy*. I remember these routine allusions from the time I was 18 forward. At the time, I thought *One-Eyed Willy* referred to any man's penis; but now, knowing these men were homosexual partners, I know *One-Eyed Willy* referred to Tim's penis. Back in the early and mid 1980s, we might be sitting in the Forestville office, and a woman outside might walk past the window and wave in, and Tim might wave back, and say for Dennis' amusement, "She must've seen old One-Eyed Willy!"

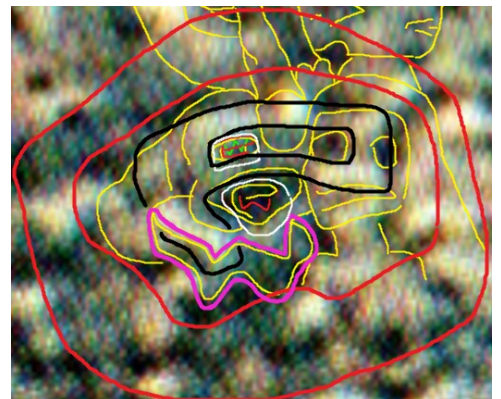
Dennis would chuckle and repeat, "One-Eyed Willy!"

God knew when I finished the tracing Dennis' display name rendering, I'd know the one-eyed character was *One-Eyed Willy*, and I'd soon realize the various recurring one-eyed base characters referred to three **Worship** crimes: (1) **Worshipping his Image, Type B**, which is when a person over-focuses on someone else's body type, and develops doubt or body issues (anorexia, etc...), which can have life-changing consequences; (2) **Worshipping the Beast and his Image**; (3) **Causing the Earth to Worship the Beast**. (The **W** in **Willy** is a reference to **Worship**, of course).



**Above:** One -Eyed Willy to the right of a representation of Dennis Wilson, the penis junky.

**Below:** to confirm the character is **One-Eyed Willy**, God put *OEW* around the character, AND in his mouth and eye.



# Between the Lines

## V

### Seeing is Believing



A soft blue glow seems to fill the background of the heart of the central display area, like an old tube TV set. The area is even rectangular, like a TV or computer (framed in yellow above). God did this to emphasize the great danger of Image Crimes, spread through visual technologies (TV, computers, etc).

I've been posting about Mark Crimes for over two years now, and without evidence to support this claim, I worry people who read the Mark Crimes section of *Revelation 2: The Solutions* may still not really understand the risks, or think they're OK, as long as they stay away from pornography.

Not so. To help put the risks of being brainwashed into hating others into perspective, consider this:

Hypothetically, if you watched porn, and had no other offenses, and no offsetting good deeds, depending on how much porn, etc, God and Jesus could condemn you to death, or Gehenna levels 1 to 6 (6 being the worst).

But, if you watch FOX, or any of US Republicans' advanced disinformation and *perspective molding* (brainwashing) services, and they succeed in turning you hateful, and you act on that hatred (harm someone, refuse to rent a room to, refuse to hire, or underpay someone) you go to Gehenna **level 9** –because you acted evilly, and your evil may have enduring consequences for your victim.

So, unless you know exactly who you are and what you believe, and you understand the subtle and sophisticated tactics private Western media companies use to mold public opinion and stoke hatred, every time you watch Western TV (commercials, news, etc) you are gambling with your soul.

I haven't lived in the US for almost 2 years, but last I checked, all major US entertainment and news networks were Republican owned (yes, even MSNBC –Microsoft and NBC are both Republican owned). The advantage of owning the opposition network is one source can dictate both ends of the social debate.

Here in Mexico, last I check, my primary TV news services were US owned or co-owned. This should alarm citizens. Why would a foreign country want to control or influence another nation's news? News?

Why? Because if you control the news, you control, or substantially influence, what people see and believe. This matters because centuries ago, Satan and the West formed a business partnership. Satan agreed to show the West how to make tremendous sums of money and dominate international markets; in exchange, he got certain privileges –the right to use their business engagements as opportunities to damn as many people as possible. So, if the Western business partners decided to start a news network, they'd use news to sell politics (which should never be done), and use *news* and *politics* to sell hatred, thereby damning millions. Thus, FOX is unlikely to report murders in Republican area; but when they report a murder in a Democrat's district, they also allege murder has increased under the Democrat. [The *real news* story is: *Why are those people living in poor conditions, with no jobs in sight?*] Most dangerously, US news companies, for generations, use consensus strategies to mold their weak-minded viewers' opinions. These tactics involve using 3 to 5 hosts, who happily agree with whatever the approved views are, and applaud each others' repetition of these views. Soon the audience accepts this as the proper way to think. All of this is rooted in humans' innate desire to fit in. Hatred is spread more subtly; when a murder happens in a Black ghetto, the incredulous news host asks, "*What's going on up there with those people?*" –other-izing the subjects, causing viewers to see them as different, not part of their group. Hate is not far away.

In the early 80s, as young Whites were dying of AIDS, US news companies falsely reported that AIDS started in Africa, and it leapt from monkeys to humans (some even insinuated or alleged sexual contact between humans and monkeys). In truth, AIDS started in New York City, in 1981. No news company executives ever issued an apology to Blacks or Africa, nor did they issue a correction.

Back to the present, here in Mexico, where my Western owned news source runs three versions of an Oral-B commercial, one with a White or fair skinned female lead, one with a Brown female lead, one with a Black lead. The White and Brown women are presented as demure and respectful, but the Black woman is presented in a very off-putting, arrogant, in-your-face manner. I've seen plenty of these hateful US-made commercials down here. This is how the US exports hatred.

# 6 The Rules of God: The Crime Timeline Rules

Before we can understand the Elder Badge's Unforgivable Crimes Timeline, and other features, we have to understand the basic rules.

The some of the rules of the Elder Badge are representational (only for illustrative purposes, not literal), but some rules, particularly those in the base, are intended to reveal some reasonably accurate details about afterlife punishment; this is likely intended to scare evil and misguided humans back on the right path.

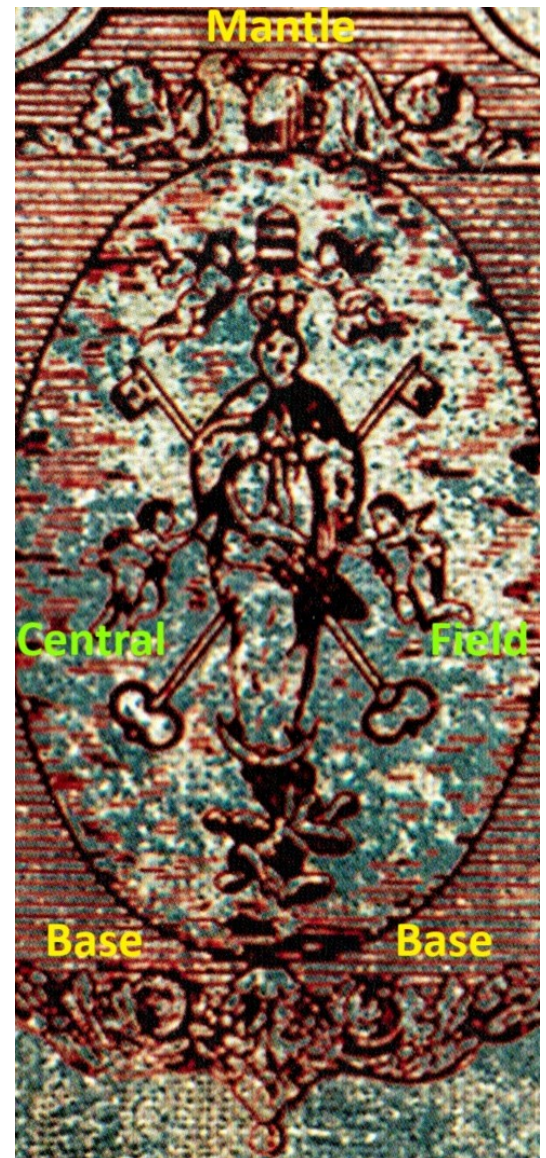
The mantle represents Heaven. God reveals just about nothing about Heaven in the mantle.

The central field represents life on Earth.

The base represents Gehenna and Sheol.

The rules between the central field and the base **tend to be opposite**. Here are two important *opposite* examples:

1. God (and likely Jesus) enforces the rules in Gehenna. Because every soul sentenced to Gehenna cannot die until God wills it, they will not die from any pain God may utilize to punish them. In contrast, on Earth (the central field), humans cannot ensure prisoner safety. Thus, physical and mental punishment are acceptable in Gehenna, but NOT on Earth. Leader (and their subordinates: prison, military personnel, etc) who choose to torture or torment prisoners will find themselves in Gehenna.
2. Black eyes in the central field are good, all other eye colors are bad or doubtful. Black eyes in the base are very bad. One all black eye and it's possible that you may be damned; two and you are almost surely damned.



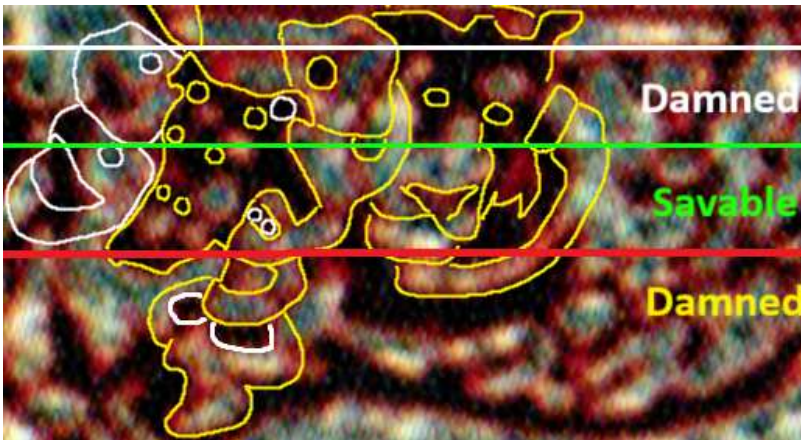
## Unforgivable Crimes Timeline, Rules and Information

The following rules and facts will be useful, sometimes necessary, to understand how the Crimes Timeline works.

### EYES

The central display characters are there to help you assess your chances of going to Heaven or Gehenna. There are two primary ways to assess a central display violator's chances of getting into Heaven, or going to Gehenna. First, by how high or low their eyes are positions on the base. Second, by the color of the eyes.

#### Eye Height



To the right, if the central display character's eyes are above the green center line, BUT BELOW THE WHITE LINE, the character is almost certainly damned. Characters who have at least one eye between the green and red lines can be saved –if they act accordingly. People below the red line are almost surely damned.

Dennis Wilson and Hugh Schreiber are not in this group because they are mass murderers. It's possible that God and Jesus might forgive a murderer. I imagine the criteria for forgiving a murderer would be asking God for forgiveness, making extraordinary change, surrendering one's self to authorities and confessing one's crimes, and facing judgment on Earth first.

#### Eye Color: **Image Crimes** / **Mark Crimes**

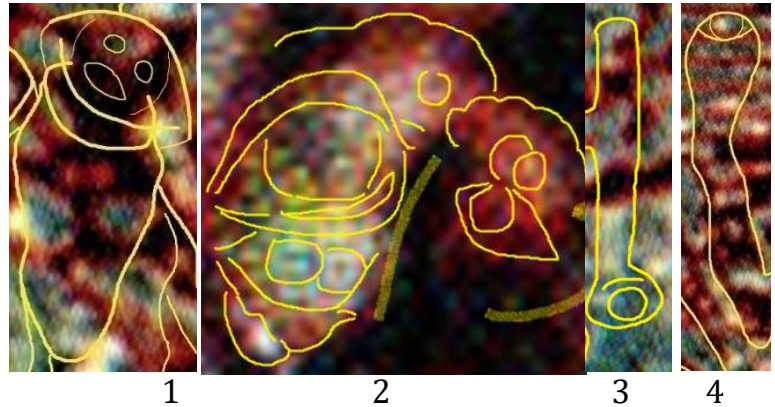
God and Jesus consider countless variables with each person who is damned or admitted into Heaven. If a person has one completely black eye, God and Jesus may damn the person, or sentence them to death, and you will see at least one case where the violator is admitted into Heaven. But if the person has two black eyes, barring extraordinary circumstances, they are damned. The subject's eye on the viewer's left side represents *Image Crimes* (crime committed through screen-based technology (TV, computers, smartphones, pornography...)), and the eye on the right represents *Mark Crimes* (social crimes). If a person has one red eye and one blue, they are clear of Mark and Image infractions. The darker and closer each eye is to black, the more crimes committed, and worse the person's outlook.

## Eyes and Worship Crimes: *One-Eyed Willy*

There are 8 types and subtypes of *Worship Crimes*. As most modern worship crimes occur through our eyes, God created many letter images and appendages with eyes; which refer to one of three Worship Crimes (1) *Worshipping his image*, type B; (2) *Worshipping the Beast and his image*; (3) Causing the Earth to Worship the Beast. These letter images/appendages are called One-Eyed Willys (OEW).

To the right:

- (1) OEWs at the top of a letter *I* usually refer to Image Crimes.
- (2) OEW inside lips, or around overlapping, unnatural lips, refer to LGBTQ life.
- (3/4) OEW that dive into the blue, or rise up, phallic-like, refer to people who watched porn and became big-penis obsessed –and often became homosexuals.



## Good Deeds

Good deeds, the good we do for others and our community, appear to be the only way we can reverse Unforgivable Crimes. My former acquaintance Pay Rose has done considerable good deeds; which gives him a chance of entering Heaven.

## Family Trees/Lines



Above: The location of several hidden Briggs family tree/lines.

Some of the *Crime total* information for secondary characters was taken from family trees hidden within the base –including a few detailed Briggs family lines, and a Wilson Family tree, which begins around 1941.

- Because, for decades, the West has created industries and fortunes from stealing my work, I'll share some information from these family trees/lines, but not rules, source points, etc, until the West's disinformation empire ends. This way, I can protect my work (and God's), to some extent. For these same reasons, I will share information and images, but not reveal where the Wilson family tree is (but with the images, dutiful researchers should be able to find the family tree, fairly easily).

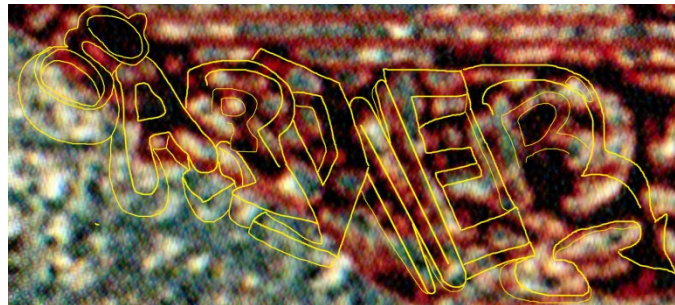
## LGBTQ Criminals/Violators Are Revealed in the Timeline

As we learned in the *display names* section, God's Crime Timeline reveals violators who are homosexual/LGBTQ.

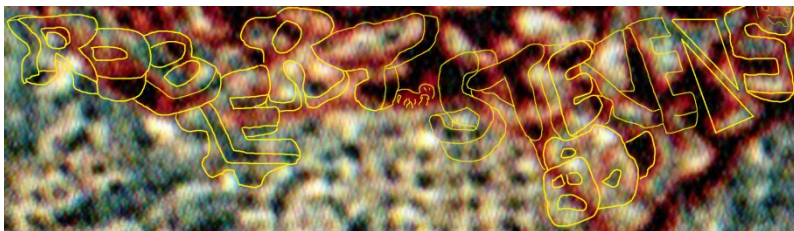
As explained previously, God does not view a person as homosexual (LGBTQ) until they have a sexual experience with another person of their same sex. If a person in the Crime Timeline did not have LGBTQ sex during the years their name appears in the timeline, then there will be no revelation on homosexuality.

However, if a person was engaged in homosexual sex before they committed a Mark Crime against me, the first letter of their name will often dip into the blue perimeter (perhaps implying the violator is violating other *boundaries*). We see this in John W. Gardner's name, below (#1), and with my elementary school principal's name (#2), and with US FBI Director William Webster's name (#3).

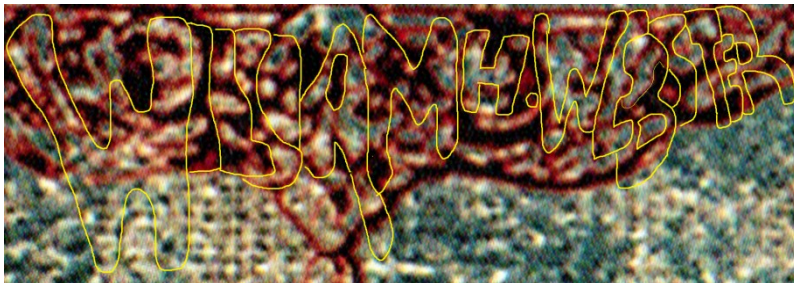
If the violator had not had homosexual sex at the time of the first violation, or the displayed violation, but had homosexual sex at a later point, while their name is still in the in Timeline field, a letter in their name will transgress the blue perimeter at, or near, the year they began to have homosexual sex, as we see with David Wilson's son Michael (below), who dipped his paw in the LGBTQ pool around 2001.



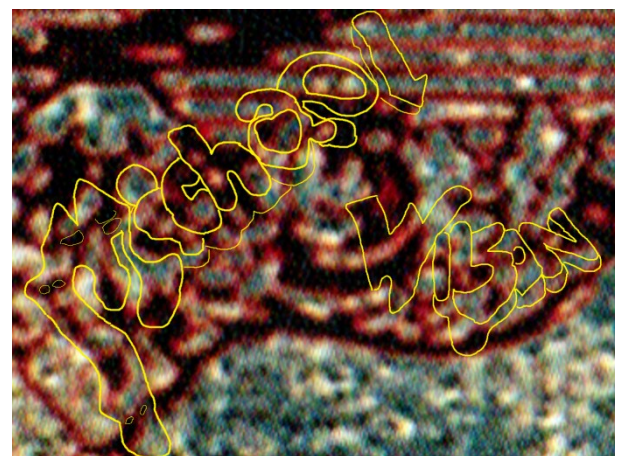
#1



#2



#3



#4

## Complexity and Size of Lettering Matters

In chapter 3 we saw two interesting and complex designs for his Satan's Timeline name renderings, and both of Gardner's Timeline names were exceedingly interesting and intricate. Satan and Gardner's names were also both huge compared to the Timeline. This reflects that Satan and Gardner were deeply involved in conceiving and planning, and their schemes were hugely significant.

Although many of the criminals' names are interesting, only a few will be as interesting and/or complex as Gardner's and Satan's –the masterminds. [But many of the stolen artworks have very complex designs; some arguably more detailed and interesting than Satan and Gardner's names.] **So, Name Rule #1 is:**

- A. The larger (taller) the name appears in the Timeline, the more significant the crime (and probably more money involved).
- B. The more intricate the violator's name (3D block design, decorative elements, etc), the more complicated the criminal's involvement.

A few examples follow.

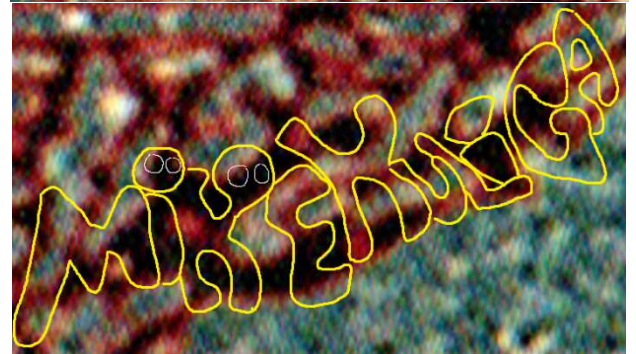
Again, Gardner's rendering is one of the most detailed and complex. His name is also quite large, indicating his power and influence.



John Van Ness' name rendering is a good example of a person playing a fairly complex role in the crimes and schemes. In this case, John's role starts simply, but becomes very elaborate.



Mike Kuliga's name is a good example of someone who accepted a basic bribe, perhaps on an ongoing basis. But the simple design suggests Mike was not involved in planning, and probably had no awareness of the overall plan. Someone offered Mike money to behave moderately unethically, and he accepted.



## God's Confirmation of Authorship Of the Unforgivable Crimes Timeline

To confirm His Authorship of the Elder Badge base and Unforgivable Crimes Timeline, God put many, many iterations of G7 in the timeline (see below). *G* is the first letter of God's title, and 7 is God's primary identity number (See *Revelation 2: The Solutions*, page 144 and 158). You can find many more such confirmations in the Authorization section, in the back of this PDF.



### Many Expressions of the Criminals' Names & Stolen Works

God's Crime Timeline is miraculous, on several levels, as it reveals thousands of unsolved crimes over a 60 year period, and does so in a never-before-witnessed *invisible art* or *hidden art* format. God takes this further, by re-revealing some crimes and criminals on multiple lines –sometimes many times. As you see, below, I've traced some of the many columns of repeating verticle letters.

Each of God's Crime revelations took substantial time to outline, some images took more than 6 hours, and all of the images took over 300 hours to extract. Thus, I outlined a few second and third confirmation versions, but only a few.

