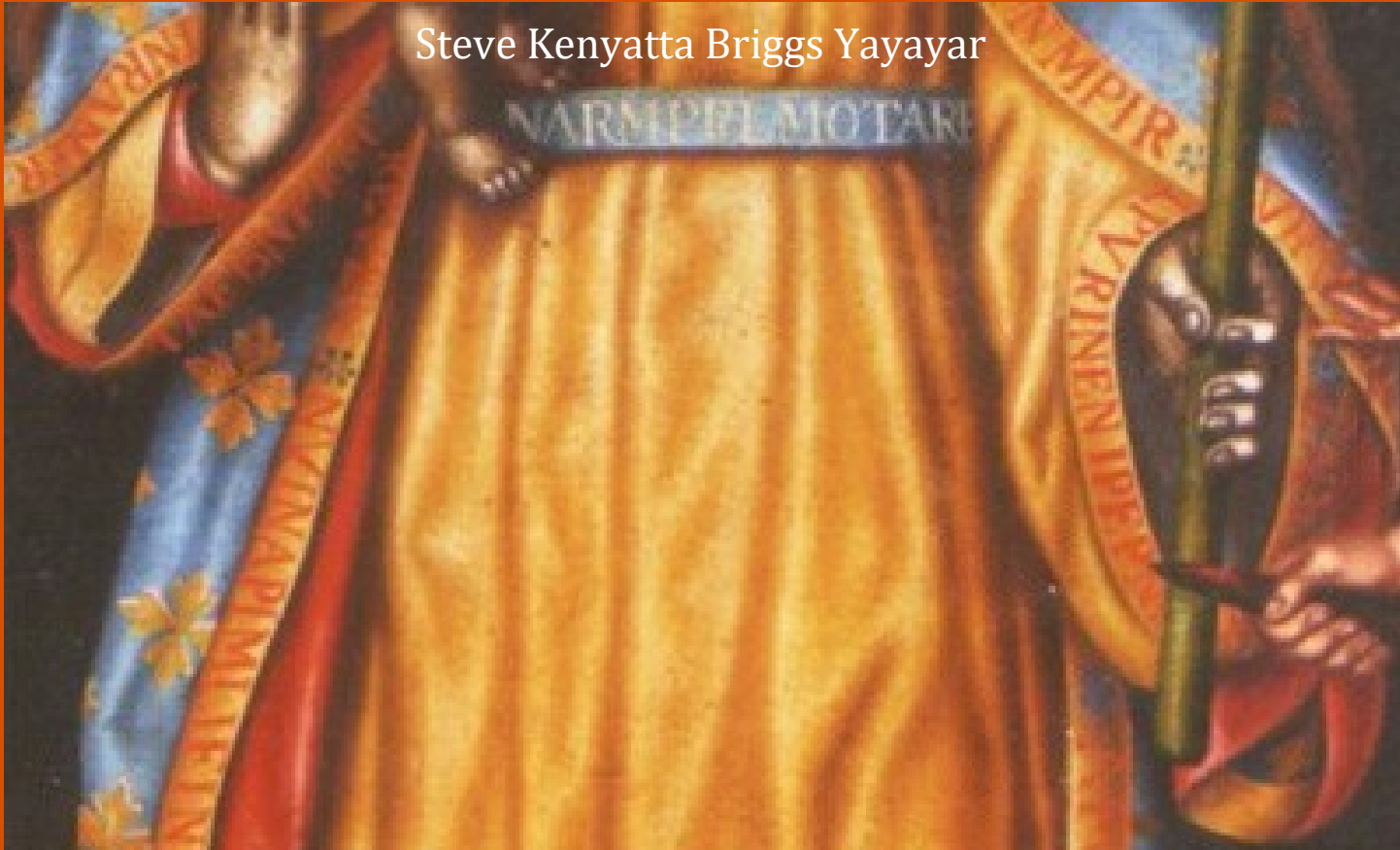


Steve Kenyatta Briggs Yayayar



A	B	C	D	E	F	G	H	I	J	K	L	M	N	O	P	Q	R	S
---	---	---	---	---	---	---	---	---	---	---	---	---	---	---	---	---	---	---

The Candalaria Code

Z	A	B	C	D	E	F	G	H	I	J	K	L	M	N	O	P	Q	R
---	---	---	---	---	---	---	---	---	---	---	---	---	---	---	---	---	---	---

EAT PVO TNR

Decoded Messages from God (and Jesus)

EAT PVO TNR

TABLE

**THIS BOOK CONTAINS SUBJECT MATTER AND IMAGES
TNOT SUITABLE FOR CHILDREN**

The Candelaria Likeness	1
The Candelaria Code	20
The Revelation Code Numbers	35
Hidden Image Messages	39
Hidden Crimes & Satan's Cipher	57

The Candelaria Code was first published on March 25th, 2026, JULIAN; and/or April 7th, 2026, GREGORIAN.
Update March 27th (Julian), 2026; April 9th (Gregorian).

There are 12,555 words in this book.

1

The Candelaria Likeness

Nuestra Señora de Candelaria was a *vera icon*, a **statue**, believe to have been made by God; a *representation* of the Virgin Mary and the baby Jesus, with dark African-like skin, which first appeared to three goatherds, on the island of Tenerife, part of what we now call the Canary Islands, off the northwestern coast of Africa, in or around 1392 –over 100 years before the Castilian (European) conquest of the island. I believe the statue also represented Natas, *Mother Nature* –God’s Daughter. The statue was purportedly lost about 434 years later, in 1826, when a tsunami carried it out to sea.

Today, online, you can find many paintings and AI copies of the Candelaria, all of which would seem to look nothing like the original Candelaria, as they look nothing like each other. However, the image to the right is a *vera icon*; a once perfect two-dimensional

likeness of the Candelaria, created by God, and later corrupted by Satan. I believe the image is, the most accurate known *likeness* of the original *Nuestra Señora de Candelaria*.

Wikipedia claims the image creator is unknown, but declares the image is from the 18th century.¹ But, later, I’ll show the image is hundreds of years older. Examining the image, you’ll find English letters around the collar and base of the Candelaria’s gown, and around the edges of her mantle, and across her belt. These letters are part of a coded message, from God, hidden in the Candelaria. In this book I refer to the image above as the ***Candelaria likeness***, as it is not the original Candelaria, but a reasonable likeness.

In this book, among other things, I tell the story of how I found and broke God’s *Candelaria Code* and discovered Satan’s effort to hide the code, and I’ll share God’s messages hidden in the Candelaria Code. I will also reveal some messages Jesus included in the Candelaria’s likeness, and some hidden images Satan slipped into the Candelaria’s surface.



¹ Of the many Candelaria images available online, only the image above is located on the original Canary Island of Tenerife.

On February 8th, 2026, Gregorian, or January 26th, 2026, Julian, I released my 17-page article report *A.I. Vera Icons* (see cover to the right), about *vera icons*, also called *acheiropoieta* –images and artworks so impossibly beautiful or unusual that are believed or known to be the works of God –and not works created by human hands.

In *A.I. Vera Icons*, I examined four vera icons, and various A.I. hidden messages Satan slipped into these images –or, more accurately, slipped into internet images of these artworks, which we all accept as photographs and accurate likenesses of these artworks, when there is nothing to support that view but our good faith.

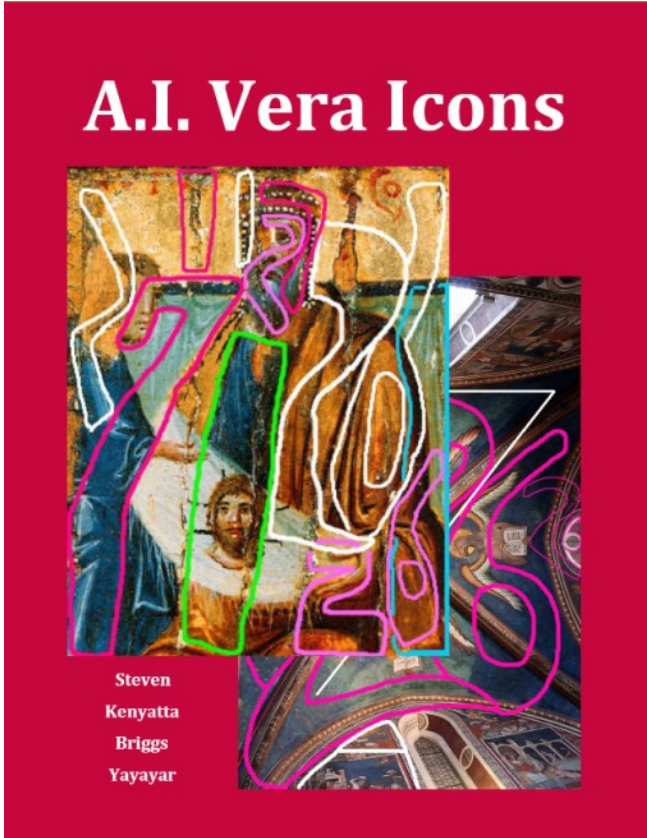
At the time, I was interested in *Nuestra Señora de Candelaria* (called *Our Lady of Candelaria*, and the *Virgin of Candelaria* in English), which I had just learned of, and found

it amazing that certain aspects of her story were so similar to *Nuestra Señora de Guadalupe's* story: a non-White apparition of the representational human mother of God's Son Jesus appeared

to non-White persons, centuries after Jesus' human birth, and thousands of miles from His human birthplace. And I was most curious about the fact that Mary, in the Candelaria, with baby Jesus' likeness, appeared to the Tenerife Guanches about 139 years earlier than she appeared to Juan Diego and his uncle, in Juan Diego's and Guadalupe's legendary story.

However, in *A.I. Vera Icons*, although I correctly identified the image to left as an artificial intelligence (AI) produced fake, I still mistakenly assumed the general likeness was fairly close to the original. But, as you see, the image to the lower right looks nothing like the Candelaria likeness on the previous page.

As if anticipating this conflict, as His coded messages remained sealed, God spoke through the Candelaria's image. And Satan spoke against God, through his AI produced Candelaria fakes...





God's Visual Message: In God's now corrupted image of the Candelaria, He presents Mary, humanity's most virtuous and venerated mother, confident and strong; yet she so respects her society's progress and tradition that she keeps her body covered, in what appears to be comfortable clothes –so as not to distract the men in her community. Yet, her Son, a representation of Jesus as a child, is virtually naked. This is subtle direction to mothers to allow young children to dress comfortably, as their sensitive young skin is often irritated by certain materials, and they are vulnerable to weather extremes. And, just as God sent Jesus to be a light to mankind, by mothering well and dressing respectfully, Mary is a light for all women; thus, she carries a candle. The dress covering is also likely symbolic encouragement for women to remain virgins until marriage. Situating the Candelaria in a cave (where the Guanche kept the statue for many years) may be God's way of telling us Mary was not ashamed, but proud, of her modest roots.



Satan's Visual Message: Satan's image mock's God's original image, at every opportunity. With the ridiculous dress with many layers, which covers most of the woman's head, with some sort of metal frame encasing the woman's face, Satan falsely claims: "God wants to repress all women." And by putting regal clothing on the baby, including a crown that is twice as big as the baby's head, Satan falsely claims that God unreasonably wishes your children be forever overdressed and uncomfortable. And by situating the fake Candelaria under an elegantly carved wooden gazebo, with extravagant gold embellishments, Satan flaunts the high living standards of people in Europe and the United States, who would never tolerate a night in cave, as many Guanches were accustomed.

Soon after discovering the Candelaria likeness, and seeing the letters along the edges and hemlines of her gown and mantle, I guessed the letters might be a code of some sort.

My local libraries and bookstores had no information about the letters on the Candelaria's clothes. This left the internet.

Online, I found only two sources that declared the sequence of letters and spaces, and their position on the Candelaria's clothes: (1) Wikipedia, and (2) a pseudo-scholarly report. However, I found conspicuous signs of fraud and disinformation on both sites, some of which I'll address herein.

Both sources alleged there were about 182 letters on the Candelaria's gown and mantle.



Wikipedia alleged the Candelaria's letter arrangement was:

Band on the neck: **ETIEPFSEPMERI**

In the belt: **NARMPRLMOTARE**

On the left sleeve, by the candle:

LPVRINENIPEPNEIFANT

In the mantle, in the right arm: **OLM INRANFR**

IAEBNPFM RFVEN NVINAPIMLIFINVIPI NIPIAN

At the edge of the left hand: **FVPMIRNA ENVPMTI**

EPNMPPIR VRVIVINRN APVIMFRI PIVNIAN NTRHN

At the bottom of the robe: **EAFM IRENINI FMEAREI**

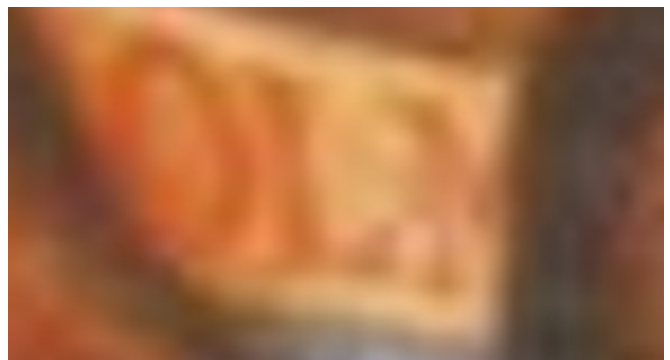
On the back of the cape: **NBIMEI ANNEIPERFMIVIFVF**



This code agreed with the letters around the hem and edges of the central Candelaria likeness referred to herein (above), which I found on Wikipedia. However, the letter sequence provided on Wikipedia, and presented on the Candelaria likeness image were both falsified. This meant someone or something altered the text on the Candelaria's likeness.

In the letter arrangement alleged on Wikipedia, there were/are several really long words; two 13 letter words, one 16 letter word, one 17 letter word, and one 19 letter word. Odd, as God is not known for trying to confuse or impress humans with his infinite vocabulary; rather, He tends to impart profound lessons through fairly common language. Nonetheless, I was able to make a cipher for the false arrangement. In the *false cipher*, the 15 visible primary letters (A,B,E,F,H,I,L,M,N,O,P,R,S,T,V) each linked to 6 alternate letters, creating a 7 line, 26 letter cipher/code key. Brilliant, for a human or a demon; but the code allowed for too many possibilities, and didn't seem to carry a message or a point -very un-God-like. Worse, I encountered so many little problems with the letter sequences -many of which seemed deliberate- that I began to suspect the letters were wrong.

To the right is an example (from an area near the Candelaria's neck) of a letter sequence that seemed deliberately obfuscated. At a glance, it looks like *OLM*. But on closer examination, between the L and the M, there appears to be a backwards capital R, attached to the left leg of the M, which also ties to the base of the L.



Faced with this and many other conflicts, I decided the wisest course was to find the *Confirmations Keys*. If the image was God's work, and the desecrator hadn't destroyed the entire image surface, God likely hid Confirmation Keys in the image, which likely survived to fulfill God's will and deliver His message.

The Confirmation Keys

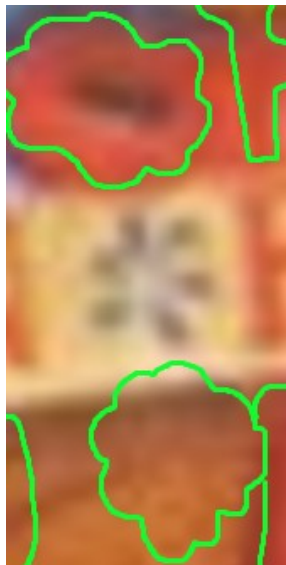
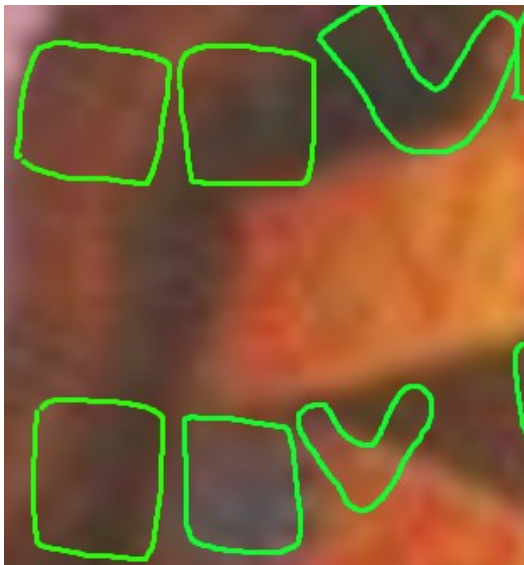
In my years-long efforts to solve (1) the mysteries of *The Book of Revelation*, (2) the *Nuestra Señora de Guadalupe* mysteries, and (3) the Elder Badge mysteries, I learned God usually uses two extra points of verification –often more. These are His Confirmation Keys. For example, in God’s Elder Badge revelations, often with His central Timeline revelations, He’d confirm text revelations by repeating the message in the space above or below the central Timeline revelation. From these lessons, I guessed that somewhere on the Candelaria likeness’ surface, God hid Confirmation Keys of the true primary Code letters (the visible letters in the Candelaria’s gown and mantle).

My worry was: if, for some odd reason, God only used one Confirmation Key, and some of the Key letters differed from the visible Candelaria code, matters would be inconclusive. BUT, if God used two confirmation keys, which agreed with each other, but some of the visible Candelaria letters were in disagreement with the Keys, the Confirmation Key letters would prevail.

As it turns out, as God is God, He provided two confirmation keys, often three or four. Many times I stopped looking for more keys; two was sufficient. Like many of His Elder Badge revelations, God placed His Candelaria Confirmation Code letters **above and below** His visible central code letters. But today, the visible reddish code letters, in the yellowish band, are no longer God’s true code letters, because sometime after God created the visible letters, Satan painted over God’s letters, and changed more than half of God’s letters. In the next 14 pages, I’ll share some of the many image tracings I created to find God’s Candelaria Confirmation Code letters.

Spaces: Squares & Flower Shapes

In the images below, and in the image to the right, notice the square-ish shapes and the flower-like shape. These are the shapes God used to represent a space between words. You can see square-ish faces in many of the square-ish shapes.



Special Characters/Letters

In God's Candelaria Confirmation Key letters, He consistently uses three recurring unique letters –which He also frequently used in His Elder Badge revelations, revealed in *Steve's Top-Secret Notebook* (STSN). God's three unique recurring Confirmation Key letters are named below.

Revelation R's

Revelation R's are explained in STSN. The right diagonal leg tends to swing out wider, as if it's walking. They can also appear to have two eyes.

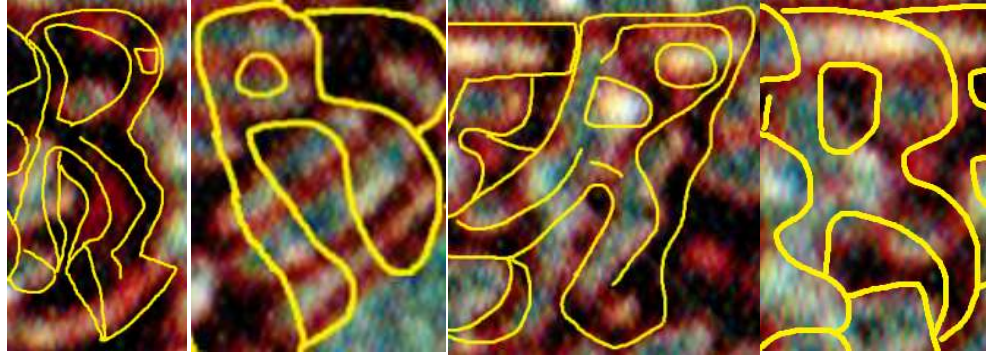
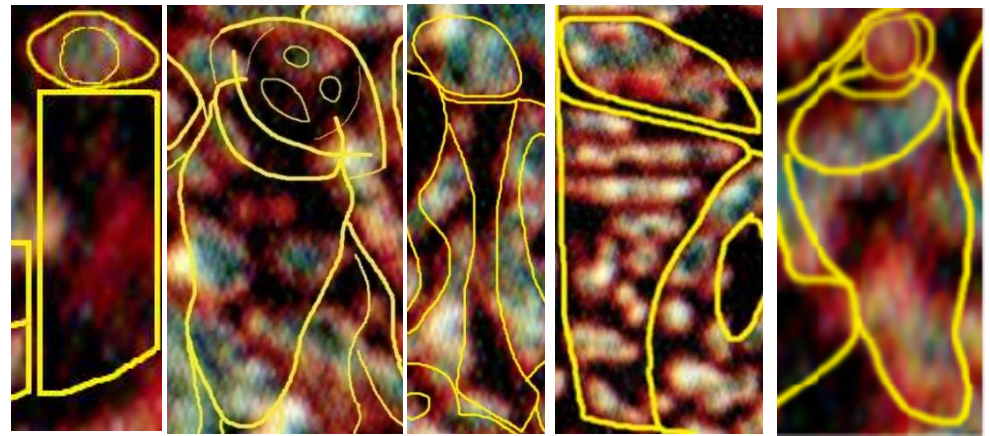


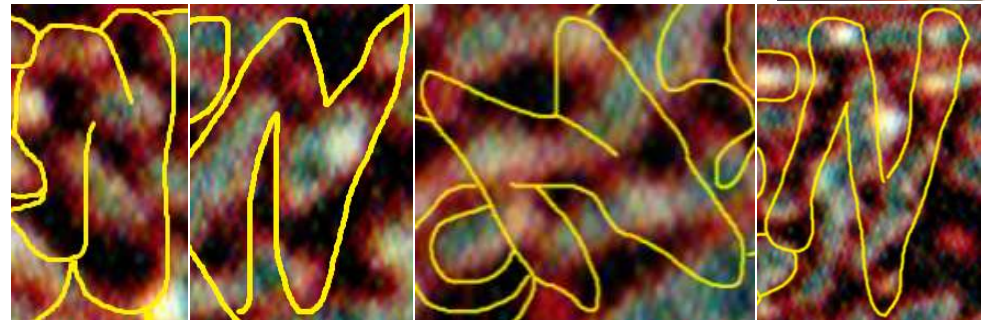
Image I's

Image I's are I's dotted with eyes (as image crimes occur through our eyes). Image I's act as capitals or lowercase. I believe God always uses image I's in His Revelation-related revelations.



Nefarious N's

Nefarious N's have a face (often a wolf-like face) between the right vertical arm and the lower joint of the diagonal bar. God used



several N's in STSN, including Nefarious N's, and *Electric N's* (my favorites). But in His Candelaria Code Confirmation Key revelations, God primarily uses Nefarious N's.

These recurring special characters confirm God's identity and His work. God is infinite. He deliberately uses these recurring letters for easy verification, to cross-link revelations, and to remind us that people often have recurring themes and ideas and *capacity signatures*, which can help identify their work. If an actor who has never written a word, is suddenly alleged to have written a relevant work, that can be an early sign of fraud.²

² Most of the many writers and artist whom I have accused of stealing my intellectual property (IP), over the years, had no such works in their history or profile.

These first visible code letter image segments are from the upper viewer's right side of the Candelaria's mantle. From here, I'll follow the false code letters, and the true Confirmation Code letters, down the right side of the Candelaria.³

Again, the reddish English letters in the yellowish-orange band/field are the falsified visible code letters. The letters and spaces above and below the central visible code letters, outlined in green, are God's Confirmation Code letters.

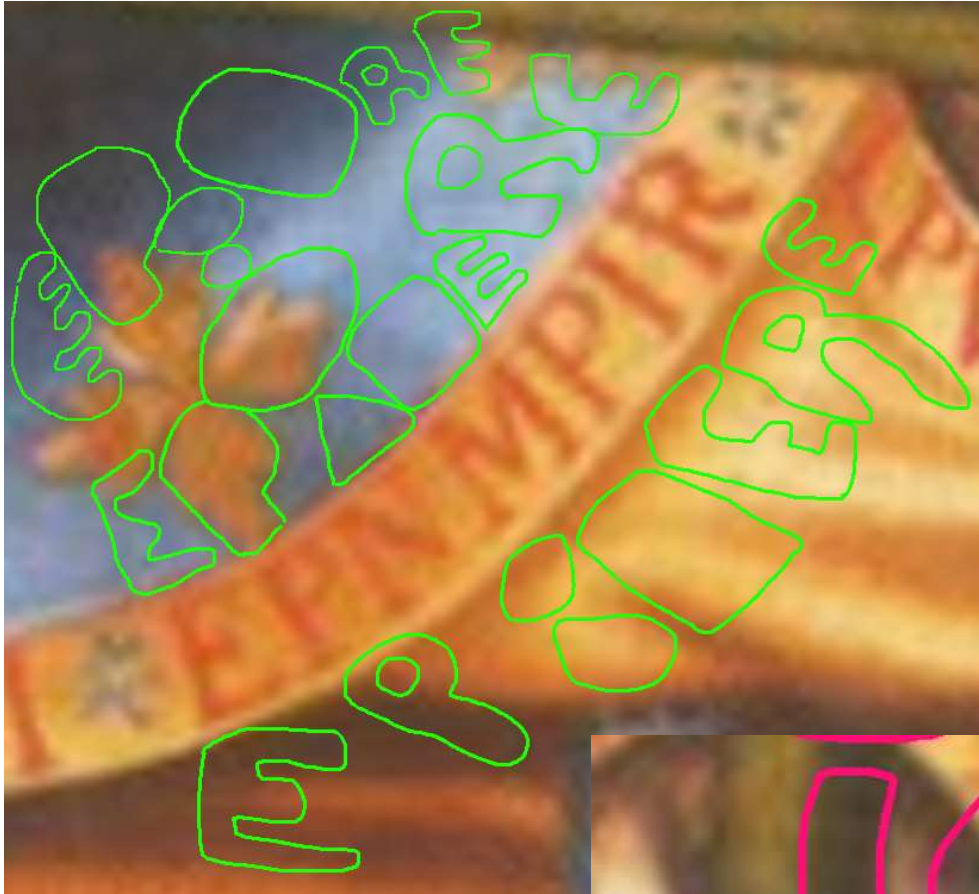
NOTE: This section reveals God's hidden Confirmation Codes, and Satan's falsified central code. Occasionally, in this section, in smaller text, as seen below, I share notes about Satan's false cipher.⁴ In the next chapter, I'll decode the true code, and reveal God's true messages.

Note: With the **false cipher** I created for the falsified visible central letters, I got the word **GUITAR** from the **ENPMTI** code segment, visible in the bottom right image.



³ NOTE: in this section all situational or directional descriptions (namely, left or right) are made from the viewer's perspective.

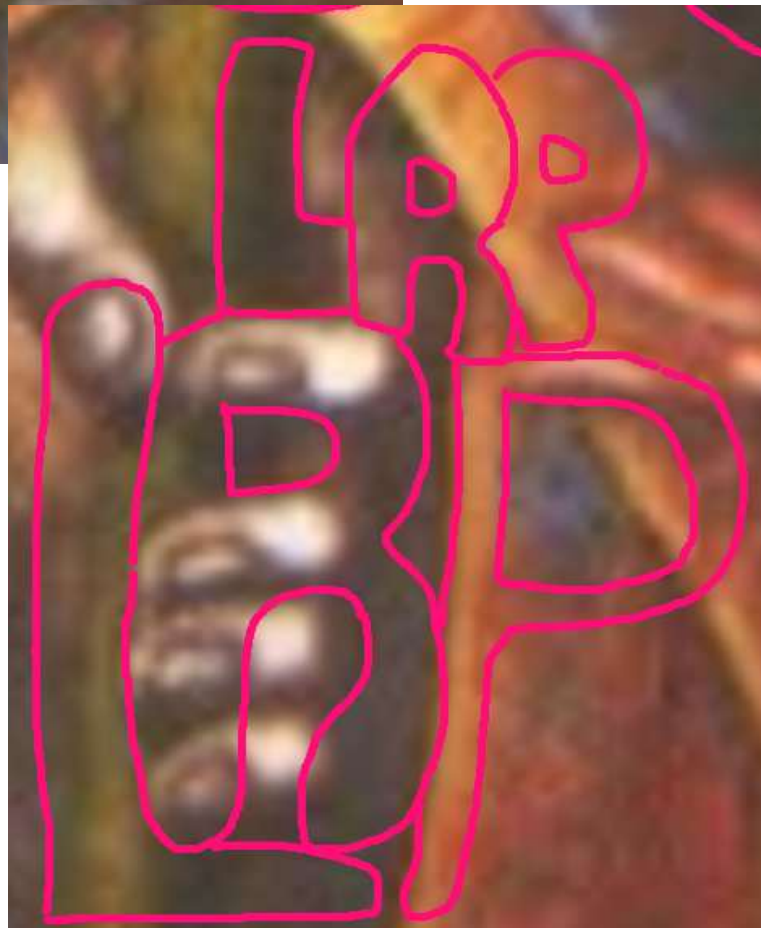
⁴ My false cipher for Satan's false code is presented at the end of chapter 5, on page 76.

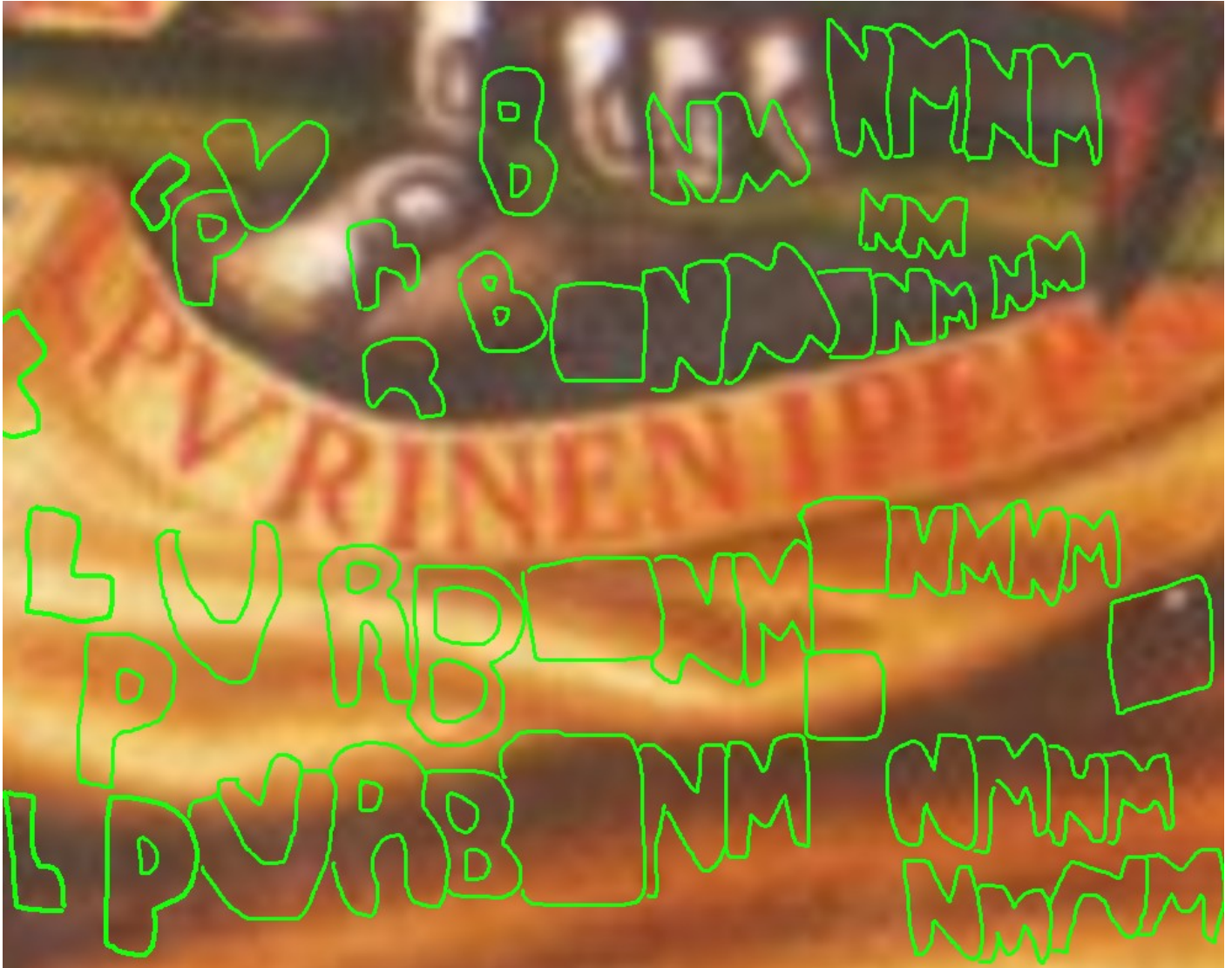


The image area to the left is from the viewer's right of the upper mantle, near the Candelaria's hand, and the candle in her hand.

EPNMPPIR is one of several letter sequences in the falsified visible code that I was not able to link to a code word.

The upper right mantle actually veers further to the viewer's right, around the Candelaria's hand, as seen in the image area to the right. The falsified visible central code does not account or provide for these three letters (LRP).





Because the Confirmation letters (like the falsified visible letters) around the cuff/hem of the Candelatia's gown are tilted 90-degrees, and presented vertically, in the image above, I tilt the image 90-degrees left, so the letters run horizontally.

This image area features one of Satan's unbreakable, nonsensical 13-letter sequences.

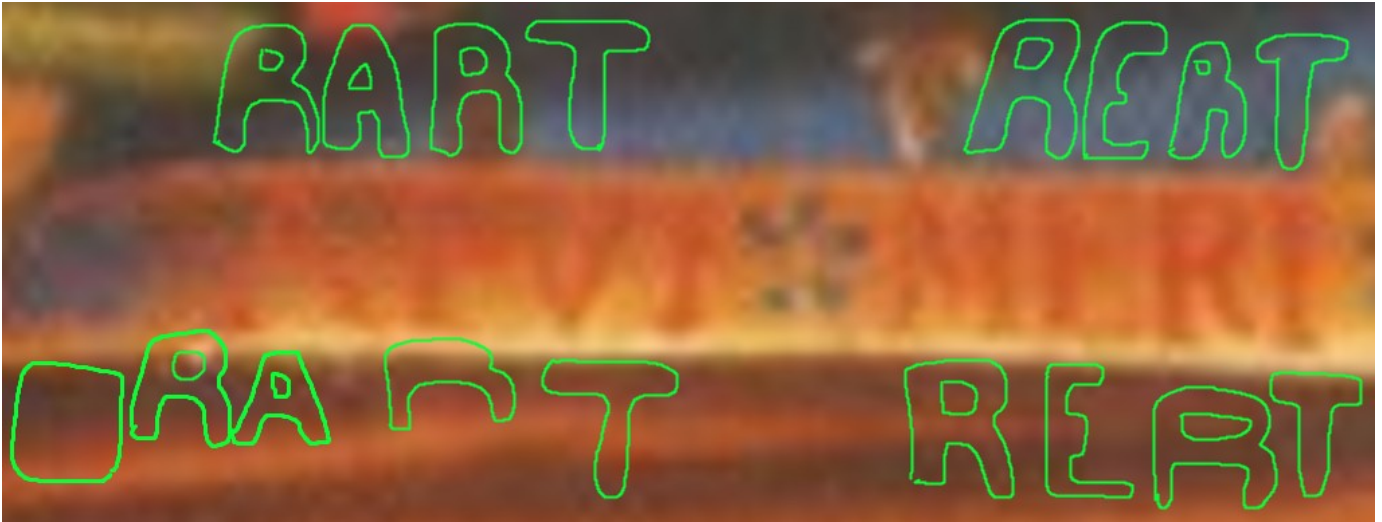


The falsified visible code also does NOT account for the three letters to the right of the Candelaria's gown cuff/hem, on the viewer's right side, as seen in the small image to the right; which I've greatly enlarged and rotated 90-degrees left, in the image below and right.



Among the images hidden in Candelaria (some by God; some by Satan, many years later) you may be able to see the profile of the monkey-like primitive man, with his mouth open, and seemingly not-too-bright, just to the right of the middle/center expression of word or sequence "TAR". I'm confident that with this semi-hidden image of a dim-witted primitive man, God is reminding us that the US/West's choice to follow Satan (cheating, lying and hating), caused a decline in their intelligence average.





Above and below are the visible falsified code letters and the true original code letters, revealed in God's hidden Confirmations Key letters (outlined in green), on the viewer's right of the Candelaria's lower mantle.

NOTE: In my false cipher of this falsified code: MERI = **DEAR**, and PIVNIAN = **GROWING**.





These (outlined in greenish blue) are the Confirmation Key letters and spaces hidden in the bottom of the viewer's right side of the Candelaria's mantle. The falsified central sequence appears to be *NTHRN*, with the first N on the vertical hemline and the rest on the bottom hem.



THE IMAGE TO THE LEFT IS UPSIDE-DOWN.

The image to the left is from the Candelaria's upper mantle, on the viewer's left side; positioned upside-down because God inserted His Confirmation Code letters upside-down.

The image area to the right is from the upper left side of the Candelaria's mantle, near her hand. The image is turned 90-degrees left to make the Confirmation Key letters most readable.





The images to the left are from the bottom left half of the Candelaria's mantle.

The central visible text of the two images (the red letters in the central yellow strip) combine to form Satan's falsified 17-letter word.

The image area to the right is upside-down; the horizontal base of the viewer's left side of the Candelaria's mantle.



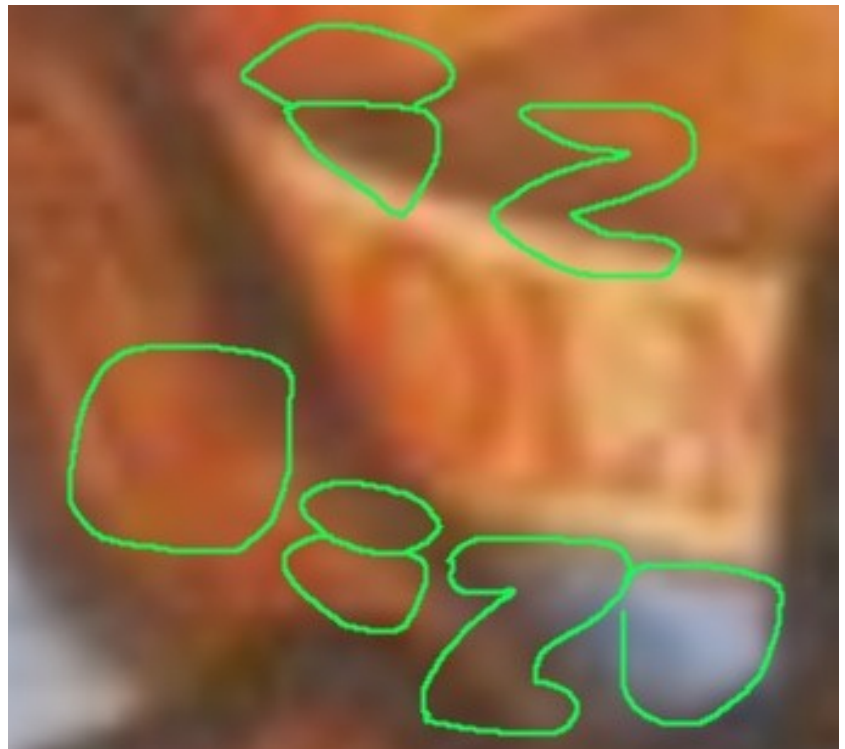
The image area to the left is from the vertical bottom of the viewer's left of the Candelaria's mantle.

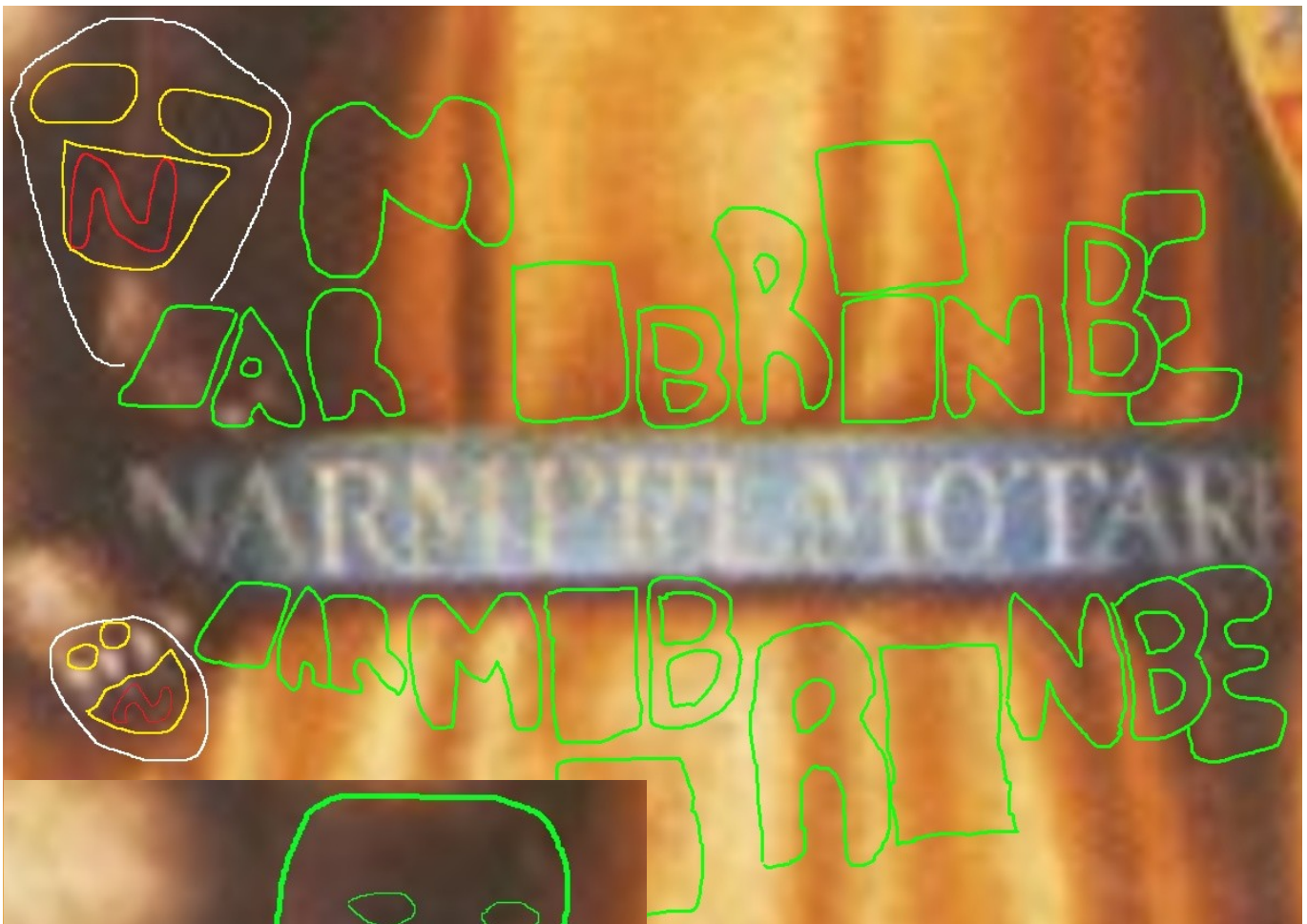
NOTE: From the falsified sequence NIPIAN, my false cipher yielded the word **URGING**.



Above, the Candelaria likeness' collar. God's true code originally read: NERT INT -2 words, 7 letters. But Satan changed the code to 1 word of 13 letters.

To the right, the most unusual section of code hidden in the Candelaria. I'll explain later.





Above is the Candelaria's belt area, where God hid one of my favorite messages (revealed later). Satan drastically changed the letters in this area. Notice the creepy faces on the left side, above. If you zoom in and search the surface of the Candelaria likeness, you'll find many creepy faces, like those to the right, also located near the belt. Satan seems to have inserted creepy faces near all of the areas he corrupted. I'm not sure if he did this *for fun*, or if it was *Deception Day Wager* requirements (more about the *Deception Day/Delay* later).

NOTE: I found the visible code at the base of the Candelaria's gown, AND the confirmation keys there, both, to be falsified. Thus, the base of the gown is presented later, in chapter 5.

2

The Candelaria Code

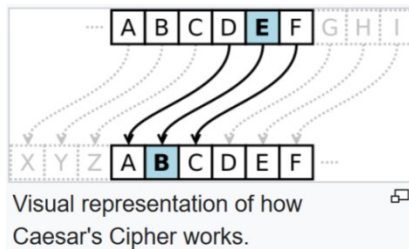
God's Candelaria code can also be called The Revelation Code, because it appears to have been create in connection to Revelation, and is constructed upon numbers emphasized in Revelation, and/or numbers that connect to a secret Revelation mystery, which I had the honor of solving from 2023 to 2025.

The story of how I solved the code is convoluted, because for over two weeks I believed the letters currently visible on the Candelaria likeness' image were the true and original letters, and I designed an effective decoding process for those primary code letters.

Satan's false code has about 182 total letters, composed of 15 different recurring letters, forming 21 *words*.⁵

God's true code had 133 characters, composed of just 11 recurring letters (plus one symbol), forming about 39 phonetic word –plus 2 symbolic words.

NOTE: "code" and "cipher" mean the same thing. I use them interchangeably in this book.



Above: a graphic of how Caesar's Cipher worked (image from Wikipedia)

When I was solving Satan's false cipher, at no point did I guess that I was *solving Satan's fake cipher*. My mission was always to solve God's Candelaria Code. Once I determined the visible letters were wrong, thus falsified, I looked for the Confirmation Code Keys, then solved the true Code using the same methods I use to solve the false code. To solve both codes, I started with the smallest words, or code segments, I could find, 1 to 4 letters, and tried to find word solutions by shifting the sequential letters of the alphabet, similar to the concept of Caesar's Cipher. When you set out to do something like this, you use everything you have, reason, instincts... occasional guesses... Because both codes have fewer letters than the true English alphabet, I decided the primary code (the visible letters –or God's code letters which had once been visible) must link to other alternate letters; then the code would finally be solved via process of elimination.

With that somewhat explained, I begin to present God's Candelaria Code on the next page.

⁵ Calling the smaller letter groups in Satan's code "words" is a stretch, as I have no evidence that he had any alternate letters to connect to the false visible letters He placed over the true code. All I know is he concealed the original code letters and replaced them with new letters.

Below is a layout of how God’s Candelaria Code works.

The eleven (11) letters in **green** are the 11 visible letters in God’s original Candelaria code.

Z is highlighted in yellow because, in the Candelaria code, Z is used as symbol, not a letter.

Preliminary Code Key

A	B	C	D	E	F	G	H	I	J	K	L	M	N	O	P	Q	R	S	T	U	V	W	X	Y	Z
H	I	J	K	L	M	N	O	P	Q	R	S	T	U	V	W	X	Y	Z	A	B	C	D	E	F	G
Z	A	B	C	D	E	F	G	H	I	J	K	L	M	N	O	P	Q	R	S	T	U	V	W	X	Y
J	K	L	M	N	O	P	Q	R	S	T	U	V	W	Q	Y	Z	A	B	C	D	E	F	G	H	I
T	U	V	W	X	Y	Z	A	B	C	D	E	F	G	H	I	J	K	L	M	N	O	P	Q	R	S
N	O	P	Q	R	S	T	U	V	W	X	Y	Z	A	B	C	D	E	F	G	H	I	J	K	L	M

Above, the second row from the top, which begins, left to right, HIJK, is the standard alphabetical order, but shifted seven steps forward, starting from K, moving left to right; once you get to Z, return to A and continue.

The third row, beginning ZABC, is in alphabetical order, shifted one space back, starting from Z, moving left to right.

The fourth row, beginning JKLM, is alphabetical, shifted 17 spaces back or 9 one spaces forward, starting from J, moving left to right; once you get to Z, return to A and continue.

The fifth row, beginning TUVW, is alphabetical, shifted 7 spaces back or 19 spaces forward, starting from T. Same subsequent pattern as the previous examples.

The bottom row, beginning NOPQ, is alphabetical, shifted 13 spaces forward or back, starting from N...

- Once you have the letters sequenced and aligned, like the *preliminary code key*, above, remove all of the columns with letters highlighted in **red** at the top; these letters are not in the code.

Now you have...

...The Candelaria Code Key (or *The Revelation Code Key*)

A	B	E	I	L	M	N	P	R	T	V	Z
H	I	L	P	S	T	U	W	Y	A	C	
Z	A	D	H	K	L	M	O	Q	S	U	
J	K	N	R	U	V	W	Y	A	C	E	
T	U	X	B	E	F	G	I	K	M	O	
N	O	R	V	Y	Z	A	C	E	G	I	

The 11 primary English code letters (at the top, in green) each link to 5 alternate English code letters. The Z is not used to represent a phonetic letter.

On the following pages we will begin to solve Candelaria code, and read God’s messages.

The Candelaria/Revelation Code

A	B	E	I	L	M	N	P	R	T	V	Z
H	I	L	P	S	T	U	W	Y	A	C	
Z	A	D	H	K	L	M	O	Q	S	U	
J	K	N	R	U	V	W	Y	A	C	E	
T	U	X	B	E	F	G	I	K	M	O	
N	O	R	V	Y	Z	A	C	E	G	I	

The Candelaria Code is a very difficult code to crack. The code is half code and half puzzle; meaning once you solve the code, you have to look at the 6 letter options in each position and find the hidden word(s). For example, if God had wanted to use the Code to spell my full first name, *Steven*, God may have used the top line letter sequence **TAEILE**; which, as you see, below, allows the code-breaker to form the name *Steven* (letters highlighted in pink) using a sequential combination of the top line and the alternate letters. But, in the end, the code-breaker has to find the word hidden in the 6-line code.

T	A	E	I	L	E
A	H	L	P	S	L
S	Z	D	H	K	D
C	J	N	R	U	N
M	T	X	B	E	X
G	N	R	V	Y	R

S T E V E N

NOTE: The Messages (puzzle solutions) are revealed below the puzzles (code keys), in yellow highlight.

Each code word has fewer spelling options than you might guess, for two reasons:

- (1) God increased the difficulty of this *message challenge* by imposing the restriction on Himself that no primary (top line) letter can occur twice in sequence, unless the two letters are separated by a space.
- (2) In the very efficient code key of just 66 recurring letters (11 x 6), the average letter only recurs about 2.54 times.

The Candelaria's Code letter sequences are: Collar: **NERT INT**; Right upper mantle: **V VN EP MTI EPI ERE**; Mantle over viewer's right hand: **LRP**; Gown cuff/sleeve hem: **LPVRB NM NMNM**; Top of cuff/hem: **TAR**; lower right mantle: **RART RERT PIVITNR N**; bottom mantle hemline: **RAIRAR**; viewer's left mantle near hand (top): **RN RNRN**; viewer's left mantle neat hand (bottom): **REV TRA**; viewer left lower mantle: **REVEN RTI ANBI LNE NIPN MLR LNRT**; viewer's left mantle bottom hem: **TRNV**; on the Candelaria's back (on her mantle): **ALI IPR ALR PAIA IPEBR MLE**; upper right mantle: **I Z**; belt: **ARM BR NBE**.⁶

⁶ Again, I found the visible code AND confirmation keys at the base of the gown to be falsified. Thus, that section is presented in chapter 5.

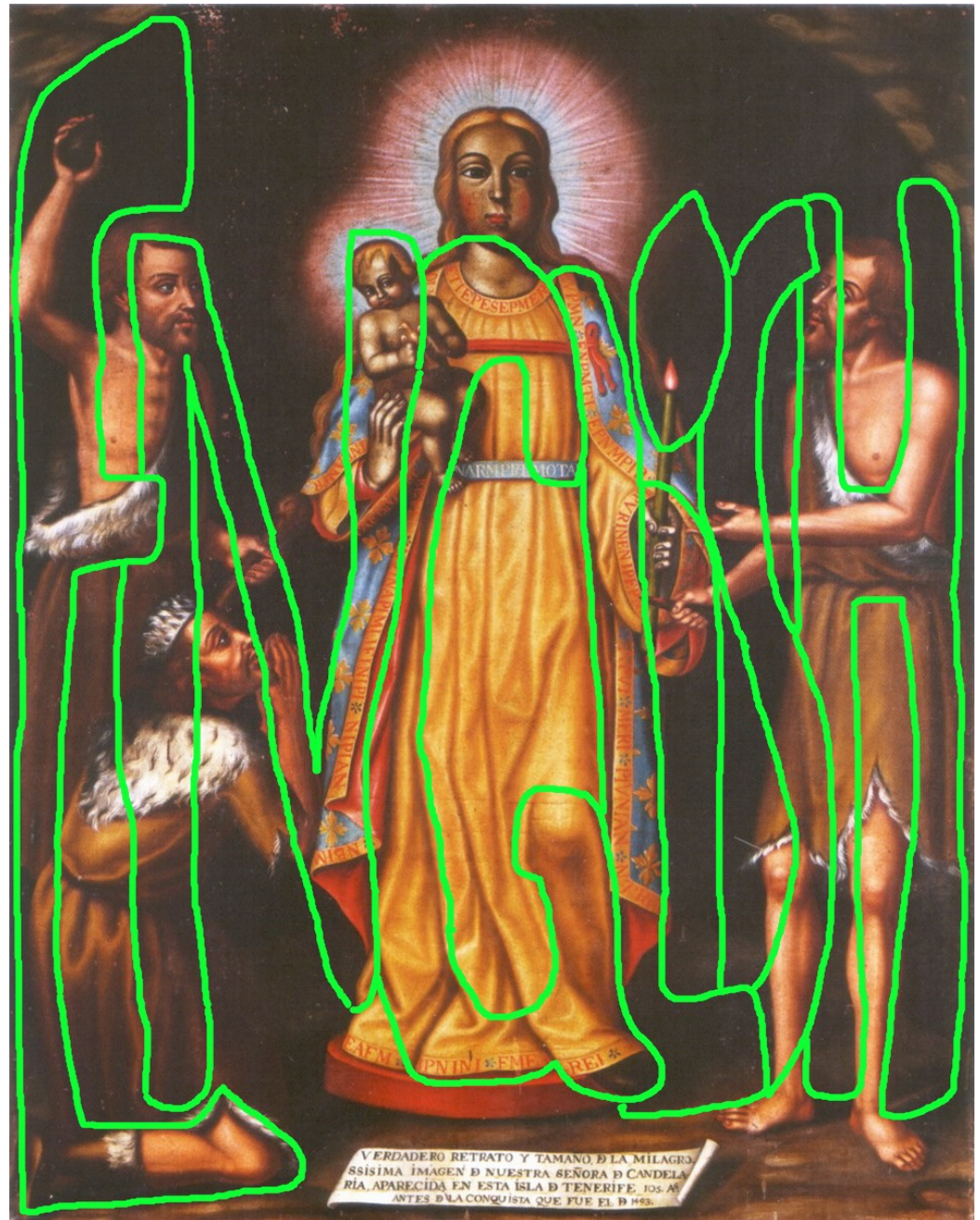
By this point, some serious minded readers may wonder “How can you be sure the Candelaria/Revelation code was meant to be decoded in English, and not a language like Spanish, which shares many of the same letters.”

SOLUTION: On March 16th, 2026, Gregorian (March 3rd, 2026, Julian), I published a preview article for this book, titled, *Double Damnation: A Prequel to the Candelaria*. In that article, above the Candelaria’s image, on page 4 I explained: “Notice some of the **unusual lines and shadows, and odd positioning (e.g., the Guancho’s splayed feet)**; these things help form *invisible lines*, to communicate higher messages [from God and Jesus].” I then included

about 8 outlinings (image tracings) of hidden messages God and Jesus included in the larger Candelaria likeness image. In the larger Candelaria likeness image God and Jesus also reveal the Candelaria Code’s intended language. [Note: The *unusual lines* mentioned above can be called *message lines*, for efficiency.]

God indicates the code language in a couple of ways, such as by inserting the word *English* in the Candelaria’s message lines, as seen in the image to the right.

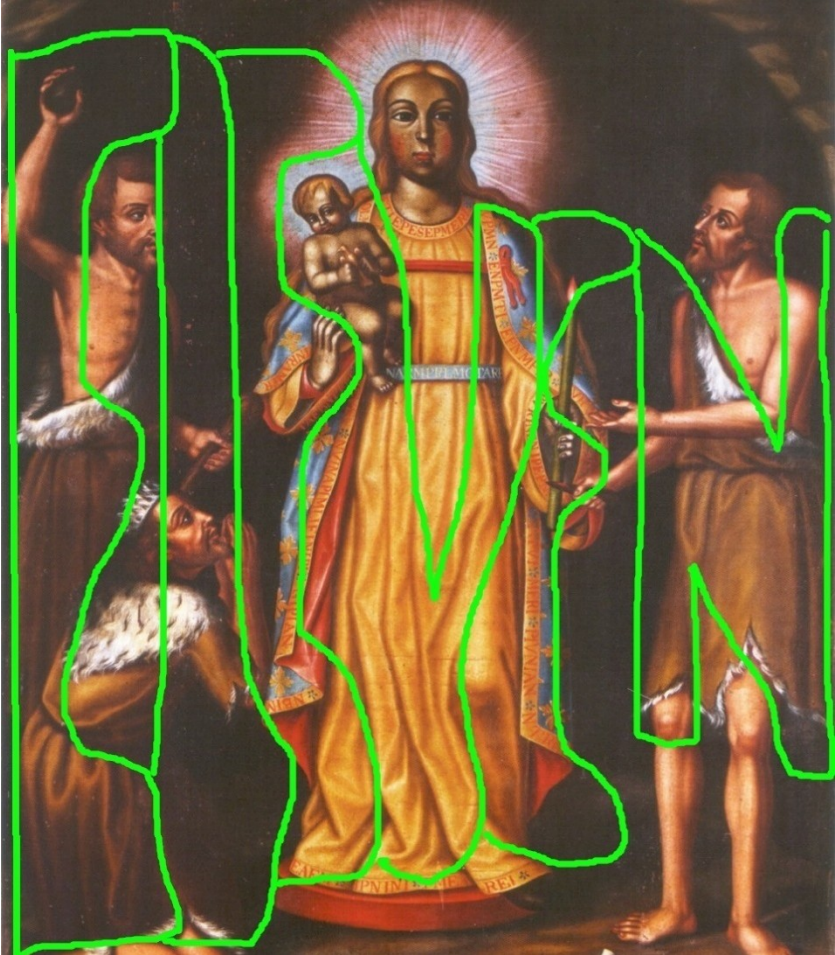
Further,...



...in the Candelaria's hidden message lines, God included a giant "L 26," which I believe means the code *Language* has 26 *Letters* (English has 26 letters, Spanish has 27).



In these same hidden message lines, God confirms that the code has 11 or 12 letters. But to confirm how many letters are used phonetically -for words- brilliantly, God spelled *ELEVEN*.



GOD'S MESSAGES

Viewer's Left Mantle, Near Hand
(left exterior; 2 words, 6 letters, 1 space)

Viewer's Left Mantle, Near Hand
(right interior; 2 words, 6 letters, 1 space)

#1

R	N	R	N	R	N	/	R	E	V	T	R	A
Y	U	Y	U	Y	U	/	Y	L	C	A	Y	H
Q	M	Q	M	Q	M	/	Q	D	U	S	Q	Z
A	W	A	W	A	W	/	A	N	E	C	A	J
K	G	K	G	K	G	/	K	X	O	M	K	T
E	A	E	A	E	A	/	E	R	I	G	E	N

Solution: A N A M E N, A X E - M E N

In Ezekiel 9:1-7, upon seeing pervasive corruption and evil in Judah, God calls six men before Him, each with battle-axes in hand. God directs one to go out put a mark on all of the good people in the city; then directs the others to go kill every person who does not receive a mark. The axe men comply. "AN AMEN, AXE MEN," revealed just days before God's *Prophecies Against* [a period of 21 months (in most places) when God punishes nations that broadly engaged in corrupt activities] seems to be God's call to good men to take action against evil, corruption and hatred.

#2 Viewer's left Mantle (7 words, 26 letters, 5 spaces)

R	E	V	E	N	R	T	I	A	N	B	I	L	N	E	N	I	P	N	M	L	R	L	N	R	T
Y	L	C	L	U	Y	A	P	H	U	I	P	S	U	L	U	P	W	U	T	S	Y	S	U	Y	A
Q	D	U	D	M	Q	S	H	Z	M	A	H	K	M	D	M	H	O	M	L	K	Q	K	M	Q	S
A	N	E	N	W	A	C	R	J	W	K	R	U	W	N	W	R	Y	W	V	U	A	U	W	A	C
K	X	O	X	G	K	M	B	T	G	U	B	E	G	X	G	B	I	G	F	E	K	E	G	K	M
E	R	I	R	A	E	G	V	N	A	O	V	Y	A	R	A	V	C	A	Z	Y	E	Y	A	E	G
A	L	O	N	G	E	A	R	H	A	I	R	S	A	D	U	P	O	N	M	Y	E	Y	A	K	S

Here God is encouraging nations and individuals to try to reduce illiteracy (people who write, read and speak poorly). Above, God's decoded message reads:

Along ear hair sad upon mye yaks.

God's spelling is deliberately very wrong. Only two words are spelled correctly. The other words are either the wrong words, the wrong tense or entirely misspelled.

The correct spelling is: ***A long-eared hare sat upon my yaks.***

The extra bottom line solution is "sad upon my ears", express God's sadness at unnecessary illiteracy, and emphasizes His wish that we all strive to communicate at a proficient level.

God's intentional spelling errors stress the importance of being able to write proficiently; while God's alternate ending, "...sad upon my ears," expresses the importance of being able to speak proficiently and properly –as speech is *heard*, but the written word is not.

- By misspelling "my" two different ways (*mye* and *muy*; like *bye* and *buy*), and by making this message 26 letters (the number of letters in the English alphabet), God confirms this message concerns literacy.



#3

Bottom of Viewer's Left Mantle Hem

T	R	N	V
A	Y	U	C
S	Q	M	U
C	A	W	E
M	K	G	O
G	E	A	I

Hidden Words:
TRUE, tame, same, came,
 game, cage sage, gene,
 cane, sane, magi...

These 4 letters lead to a lot of words. So how do we know which word God intended? If we have sharp eyes and perseverance, we refer to the image, where God hid the words "TRUE" in the left hemline puzzle, and "ATHENA" below the right (see above).

T R U E

Bottom of Viewer's Right Mantle Hem

#4

R	A	I	R	A	R
Y	H	P	Y	H	Y
Q	Z	H	Q	Z	Q
A	J	R	A	J	A
K	T	B	K	T	K
E	N	V	E	N	E

A T H E N A (also K A R A T E)

Athena is a Greek goddess, who may have many worthy attributes, but, with Satan's assistance, she is derived from God's daughter, Natas. Many of the Greek and Roman gods, and their adventures, are derived from the Bible. Most of life's best ideas come from God (life, light, stars, marriage, family, law, medicine...), so I'm certain God gives us His ideas freely; but taking God's ideas and his family to create new false gods is an offense.

Notably, the primary Code also forms the word "karate". I tend to think this was deliberate, to contrast the true creativity displayed in certain regions (such as China and the East, who gave the world karate), because they play by the rules; while other regions cheat and steal, and refuse to give proper recognition to the true innovators –thus, these regions become obsolete, in time.

The Candelaria can represent Natas. With the image and words at the top of the page, God is telling us Natas is the **TRUE** inspiration for **ATHENA**.

#5

Collar/Neck

(2 words, 7 letters, 1 space)

N	E	R	T	I	N	T
U	L	Y	A	P	U	A
M	D	Q	S	H	M	S
W	N	A	C	R	W	C
G	X	K	M	B	G	M
A	R	E	G	V	A	G

A R E A R U G

Area rugs can help keep homes warmer in the winter or cold months, and help reduce the environmental harm done by heating homes with wood fires, and other unclean forms of energy. In these messages, God has at least two messages/ideas to help reduce human use of energy sources that harm the environment and the air we breathe; this solution, and solution #10.

NERT constructs words like: meat, neat, meek, weak, week, germ, gnat, Adam, axes, area, alas... **INT** constructs words like rag, bag, hum, rug, bug... The puzzle is solved by combining the words meaningfully.

#6

Viewer's Right of the Mantle (top)

(6 words, 14 letters, 5 spaces)

V	V	N	E	P	M	T	I	E	P	I	E	R	E
C	C	U	L	W	T	A	P	L	W	P	L	Y	L
U	U	M	D	O	L	S	H	D	O	H	D	Q	D
E	E	W	N	Y	V	C	R	N	Y	R	N	A	N
O	O	G	X	I	F	M	B	X	I	B	X	K	X
I	I	A	R	C	Z	G	V	R	C	V	R	E	R

I , O N N O M A P N O R E Y E

Here, God is telling us who wrote the Code and messages, in the first person: "I," the Great God who is "on no map nor eye," –because He cannot be seen, yet He is everywhere. God's likely chose to start the phrase with "I" and end with "eye" (English words that sound exactly the same, but have different meanings) to remind the world of the danger of Image and Mark crimes (dangerous forms of unforgivable sins). **I** is the ninth letter of the English alphabet, and "I" is standard English word a person uses to refer to himself or herself; and "eye" is one of the two orbs on/in our face that we see with. In His Elder Badge messages (featured throughout *Steve's Top-Secret Notebook*), and the messages hidden in the Candelaria's *message lines*, God always dots his **I**'s with **eyes**. God does this to confirm that recently discovered **I**mage crimes occur through our **eyes**. Satan led US cable and internet companies to damn hundreds of millions of people, worldwide, via their eyes. Thus, with 6 words, God asserts His identity, and reminds us to protect our souls, by keeping our eyes clean.

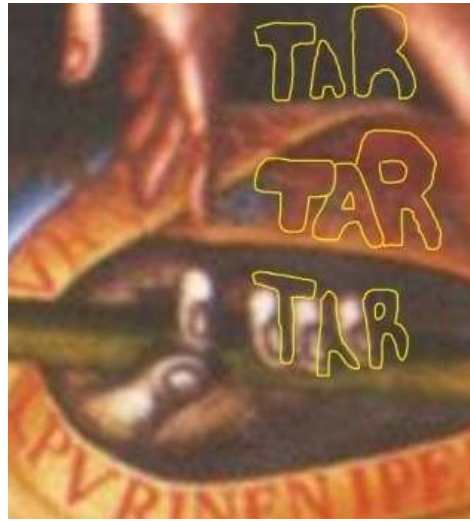
Viewer Right Mantle, Over Hand & Sleeve
(1 word, 3 letters)

Sleeve Cuff-Hem (Viewer's R; right ext.)
(1 word, 3 letters)



#7

L	R	P
S	Y	W
K	Q	O
U	A	Y
E	K	I
Y	E	C



#8

T	A	R
A	H	Y
S	Z	Q
C	J	A
M	T	K
G	N	E

S K Y

C A R

The code letters **LRP** form the word **SKY**, and are positioned next to the code **TAR**, which form the word **CAR**. This is God, again, confirming the fact that the US, the West, and fake writers, like George Lucas stole the idea of my “sky-car”, a light affordable flying car. ⁷ God even slipped “skycar” into an image message, twice, amongst the Confirmation Key letters (right)!



Did you notice the clue God slipped into the hand, next to the code letters? (See the image to the left.) The thumb and index fingertips touch, as if joined; a clue that the solution involves joining two words (sky-car) into one: skycar.

⁷ From the time I was 9 to 42 years old, my sky-car changed a lot; from a small flying car that transitioned into a tiny spaceship, to a light, practical, affordable flying car. I wasn't the first to image a flying car. But I imagined it well. And Satan and US elites obsessive interest in my ideas, and their determination to steal my ideas, promulgated unlawful derivations of my vision of a sky-car, far and wide.

#9 Viewer's Right Sleeve Cuff/Hem (left interior side)

(3 words, 11 letters, 2 spaces)

L	P	V	R	B	N	M	N	M	N	M
S	W	C	Y	I	U	T	U	T	U	T
K	O	U	Q	A	M	L	M	L	M	L
U	Y	E	A	K	W	V	W	V	W	V
E	I	O	K	U	G	F	G	F	G	F
Y	C	I	E	O	A	Z	A	Z	A	Z
S P E A K					A T		G L U T			

“Glut” is when there is too much of a certain product available on the market; driving costs so low that small merchants have trouble surviving. “SPEAK AT GLUT” is a direction for all of us to speak against leaders who do not help manage supply, so domestic merchants are not destroyed by imported products. Glut exists in many countries, caused by many things –including Western suppliers who want to destroy local competition before they move in. Having imported products is a VERY good thing. But too many imports lead to new problems. Small foreign sellers are NOT a problem. Foreigners who care enough about your business to open shop in your area is usually a blessing. The worst examples of leaders failing to manage imports is Amazon.com, which has surely destroyed millions of domestic businesses. Part of being a good leader is striving to find a good balance, so affordable imports are available to citizens, and simultaneously making sure that domestic merchants are not overly harmed by the new models. Informed citizens are essential in this. Anytime a foreign owned online market, like Amazon, opens in a new land, the citizens should ask: “How the deal was secured?” and “Can our people create a more suitable model?”

#10 Viewer's Lower Right Mantle

(4 words, 16 letters, 3 spaces)

R	A	R	T	R	E	R	T	P	I	V	I	T	N	R	N(Z)
Y	H	Y	A	Y	L	Y	A	W	P	C	P	A	U	Y	
Q	Z	Q	S	Q	D	Q	S	O	H	U	H	S	M	Q	
A	J	A	C	A	N	A	C	Y	R	E	R	C	W	A	
K	T	K	M	K	X	K	M	I	B	O	B	M	G	K	
E	N	E	G	E	R	E	G	C	V	I	V	G	A	E	
P A R T				Y E A R				P R O P A N E							

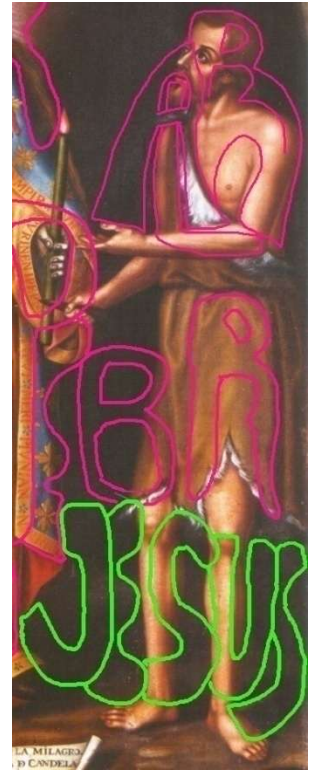
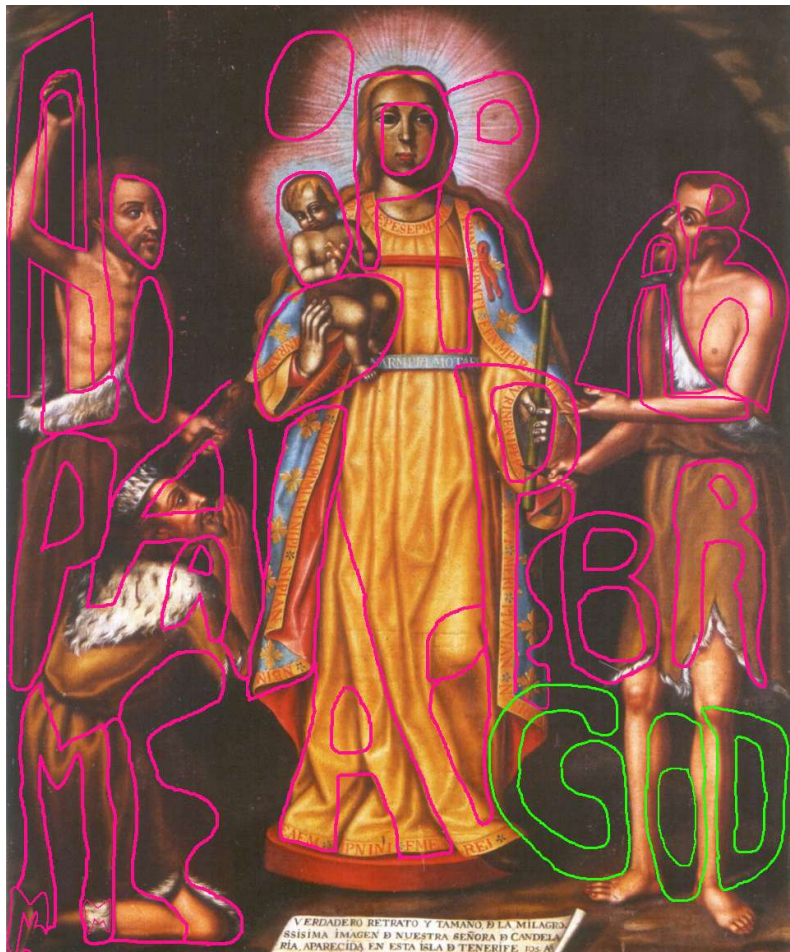
“PART YEAR PROPANE” is a message to countries that may use too much wood for heating in the cold months, and to countries, like Mexico, that use too much wood for cooking, and pollute the air, and possibly deplete the plant-life. Some people might argue: *this is how our ancestors lived*. The obvious response is *our ancestors lived when Earth's human population did not threaten everything else; plus, our ancestors did not know better*. This is evolution. We learn, and adopt better ways. By the way, propane is the cleanest burning gas. God knows.

The N and/or Z in the bottom mantle corner is explained on page 34.

#11 Back/Rear (Out of View)

(6 words, 21 letters, 5 spaces)

Wikipedia said there were 18 letter on the back of the Candelaria's mantle, out of view in the Candelaria likeness' image. Most of the information on Wikipedia about the Candelaria's letter code was incorrect, so I had doubts about the letters Wikipedia said were on the Candelaria's back. So I turned to the Candelaria likeness image, to see if God revealed the true letters. And...



He did! There were once 21 letters) on the back of the Candelaria (*ALI IPR ALR PAIA IPEBR MLE*), forming 6 words, presented in the image above. I previously published the image tracing above in my "Double Damnation..." article. If you can't quite make out the letters in the small image above, a larger version of the image is featured in the *Hidden Image Messages* chapter.

A	L	I	I	P	R	A	L	R	P	A	I	A	I	P	E	B	R	M	L	E
H	S	P	P	W	Y	H	S	Y	W	H	P	H	P	W	L	I	Y	T	S	L
Z	K	H	H	O	Q	Z	K	Q	O	Z	H	Z	H	O	D	A	Q	L	K	D
J	U	R	R	Y	A	J	U	A	Y	J	R	J	R	Y	N	K	A	V	U	N
T	E	B	B	I	K	T	E	K	I	T	B	T	B	I	X	U	K	F	E	X
N	Y	V	V	C	E	N	Y	E	C	N	V	N	V	C	R	O	E	Z	Y	R
H E R			B O Y,			H E R			P A I N,			H O N O R			M E N.					

A powerful statement about the importance of Jesus, and his representational mother, Mary.

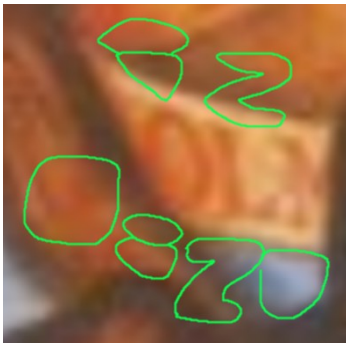
This statement can also be laterally applied, to express the importance of good mothers -and what their sacrifice represents to men.

SPECIAL: Upper Viewer's Left Mantle
(2 characters, 2 representations)

#12

I	Z
---	---

#13



To the left, The Confirmation Keys reveal the original letters on the Candelaria's shoulder were **I** and **Z**. God used these letters to reveal the year the Candelaria likeness image was created. The Z is intended to be used as both an N and a Z. **N** is the 14th,

and **Z** is the 26th letter of the English alphabet; thus, the creation year is **1426**. I is the 9th letter; thus, the month of creation was September (the day was likely the 9th). God created the likeness:

SEPTEMBER 9th, 1426



- Above, the Candelaria likeness' date of creation is confirmed in the image: 1426.
- The N/Z on the viewer's right bottom mantle corner also represents 1426. **#14**

#15 SPECIAL: Belt

(3 words, 8 letters, 2 spaces)

The code in Candelaria likeness' belt differed from the other letters, as they appeared against a blue backdrop (the other letters appeared against a yellow backdrop). The color change represents difference. The yellow codes carry messages. But the blue belt code identified the sender: **GOD**. The belt is the Artist's signing area.



A	R	M
H	Y	T
Z	Q	L
J	A	V
T	K	F
N	E	Z

B	R
I	Y
A	Q
K	A
U	K
O	E

N	B	E
U	I	L
M	A	D
W	K	N
G	U	X
A	O	R

A R T

B Y

G O D

3

The Revelation Code Numbers

A	B	E	I	L	M	N	P	R	T	V	Z
H	I	L	P	S	T	U	W	Y	A	C	
Z	A	D	H	K	L	M	O	Q	S	U	
J	K	N	R	U	V	W	Y	A	C	E	
T	U	X	B	E	F	G	I	K	M	O	
N	O	R	V	Y	Z	A	C	E	G	I	

The Revelation Code (also now known as the *Candelaria Code*) involves a lot numbers, many of which connect to the Book of Revelation, and to Genesis. The numbers also connect to God and Jesus. And many of the numbers connect to Satan and his beasts (John W Gardner –the Beast, and John C Malone –the second beast). Many of the numbers have symbolic meaning; and some have layers of symbolic meaning. In this chapter, I’ll touch on some of the numbers and meaning. But as the meanings and connections seems to go on forever, there is plenty I won’t get to –and plenty I have yet to understand.

Let start at the top, with the Revelation/Candelaria Code Key.

The code has **six (6)** rows of letter code. Six is Satan’s primary number. Satan takes this number from Natas’ secondary number (Natas is God’s daughter –His second child; the equivalent of Mother Nature). Using Nata’s secondary number as his primary, is a symbolic statement that Satan deliberately goes against nature.

The Code Key has **11** columns, and used/uses 11 primary visible, recurring letters. Visually, 11 can represent God and Jesus standing together, indivisible (in this sense, 11 is similar to the Roman numeral II, or ii, which represents 2). In Revelation, in Chapter 11, the Beast is first discretely referenced in 11:12, 13 and 14 –each referring to 1906, the birth year of the originally planned Beast, John D Rockefeller, III. But God replaced J. D. Rockefeller III with an even more dangerous Beast, John W Gardner, to punish Satan and the West for committing extreme crimes (see Steve’s Top-Secret Notebook for specifics). 11 also refers to the 11 letters in the Rockefellers’ family name. Although JDR III was replaced as the Beast, he and his two brothers, David and Nelson are the only humans, other than the actual beasts (Gardner and Malone) who knew John W Gardner was the Beast (the Rockefeller brothers were dead by the time John Malone became the new beast).

The Code Key has **66** letters. Satan is strongly connected to the number 66, which represents several things. 666 is the number associated with Satan’s minion beast. 66 is a declaration that Satan is the strength behind the beasts. Satan worked hard to spread homosexuality, and is likely a homosexual. 66 represents two men, together, romantically.

There are **130** recurring phonetic letters in the Revelation code; plus 3 symbols –letters that are not used phonetically, yet convey important information. The 13 in **130** likely refers to Revelation, Chapter 13, often considered the most ominous and captivating chapter –the chapter in which 3 of the 4 beasts of Revelation are introduced: the Beast out of the Sea (The Holy Roan Empire –Western Europe), the Beast out of the Land (The United States), and the first human Beast (Gardner).

God’s Revelation Code uses a total of **133** letters and symbols. This may be a reference to Revelation 13:3, the verse where we learn the first beast, and subsequent beasts, have the power to greatly and broadly influence human behavior, and cause the world to want to emulate and copy the beast(s): “... *And all the world marveled and followed the beast.*”

Three factors heavily into the Code. Often when God signals **3**, He is referring to Himself and His two Children, Jesus and Natas –the three Great Gods.



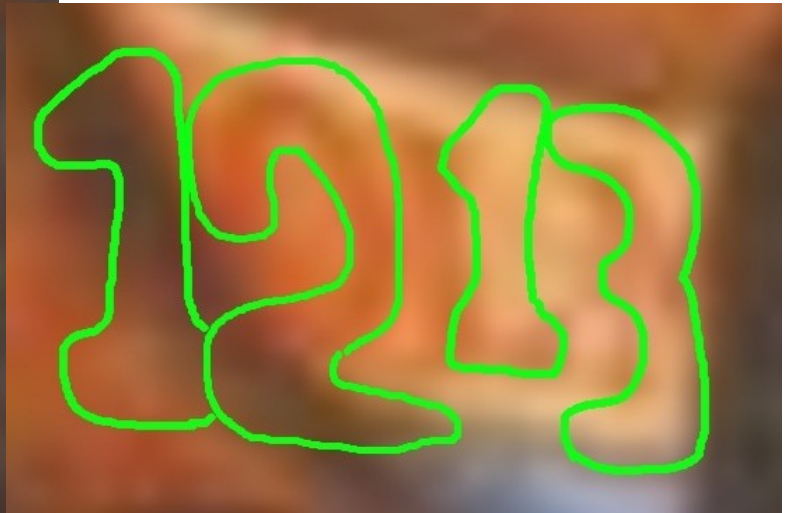
Above: two of the Candelaria likeness’ Confirmation Keys for the primary Code letters for AXE MEN. God expressed the words separately (left), and as a compound (right).

The Revelation Code forms **39** individual words. But two of the words form an unconventional compound word (a word formed of two -or more- smaller words), which God prefers to the separated words. *Skycar* is the new word formed from *sky* and *car*. I’m confident God expresses this preference to encourage creative thought and expression. New words are created all of the time. Writers should own the words, not the converse. Additionally, there are two words (*axe* and *men*), which God visually indicated He likes either separately (see above, *axe men*, or *axe-men*) or to combined (*axmen* –as the compound is spelled in English). Thus we can view the Code as having **37** words, or **38**, or **39**. When we include the 3 symbolic words, the totals increase to **40**, **41** or **42**.

I’ve come to believe that when God express these sorts of sequences (7, 8, 9, 10, or 37, 38, 39, etc) He is saying that people, beings and Gods, great and small, are entitle to their differing views and preferences, so long as they do not harm others or violate laws. Allowing for these differences is one of the great challenges of leadership.



God used His roughly 39 word code to express **15** messages, or *message sections*, which were enumerated with red numbers (#15) in the preceding chapter.



God used visual number messages to inform me my message count and sequence were correct. The two images above are from the Candelaria likeness' shoulder area, where the date symbols are. In the image on the left, the number **2**, between the month symbol (*i*) and the year symbol (*Z*), tells me these two symbols should be counted separately. The image above, on the right, the numbers 12 and 13 tell me where in the message sequence these sections belong: the month and day symbol go in the 12th position, the year goes in the 13th position.

To the right is the image area where the words SKY and CAR are formed from the Confirmation Key letters *LRP* and *TAR*. To inform me that these Code sections should be counted separately, and where in the sequence they belong, God *hid* an image of the number 7 where the code LRP (SKY) is positioned, and He hid an image of a number 8 where the code TAR (CAR) is positioned.



- In the Revelation Primary Code (RPC), the letter A appears **11** times.
- In the RPC the letter B appears 5 times.
- In the RPC the letter E appears 13 times.
- In the RPC the letter L appears 8 times.
- In the RPC the letter M appears 7 times.
- In the RPC, the letter N appears 19 times.
- In the RPC the letter P appears 9 times.
- In the RPC the letter **R** (Revelation, Rockefeller) appears **28** times.
- In the RPC, the letter T appears 11 times.
- In the RPC the letter V appears 7 times.
- In the RPC, the letter **I (i)** appears **14** times.
- If we give the Z/N symbols a value of 40 (Z=26 + N=14), the combined alphanumeric total (A=1, Z=26) of God's messages is **1730**. In 1730 prospective slaves on the slave ship Little George staged a successful mutiny and regained their freedom.

The I (i) is probably the most interesting letter in the code, because it is the only letter that always appears as a lower case letter, although it is used as a capital. I believe God chose to use *i* in the lower case form because the lower case expression can represent God and Jesus, always working together, and Natas –with them in spirit. Here how:

To the right are two lowercase *I*'s, one from Cambria font text, the other from the Candelaria's Confirmation Keys. A conventional lowercase I is composed of a larger body, which is always accompanied by a smaller dot –a somewhat smaller section. God is represented by the larger body, and the smaller section represents the second most powerful force in the universe: Jesus. Natas is present in the I, because it is the ninth letter of the alphabet; Natas' primary number is 3, and 9 is 3 x 3...

i



When God reveals something to us, like His strong bonds with Jesus and Natas, He is often conveying larger messages, which He hopes we work to learn. By reminding us of His unbreakable ties with His Son and Daughter, God is likely (1) encouraging us to put nothing above family, and work hard to keep family bonds strong, and (2) encouraging us to pay due respect to Natas (Mother Nature), and Jesus –who judges all souls who enter Heaven.

- In God's Messages, only one word was used twice: **Her**. This is likely God's way of stressing the importance of being diligent parents, especially with girls.
- In God's messages only one symbol was used twice: **Z**. As Z is the 26th letter of the English alphabet, and 27th of the Spanish, this may mean 2026 (when God's Prophecies Against begin), followed by the Second Coming (late 2027) will be eventful.

4

Hidden Image Messages

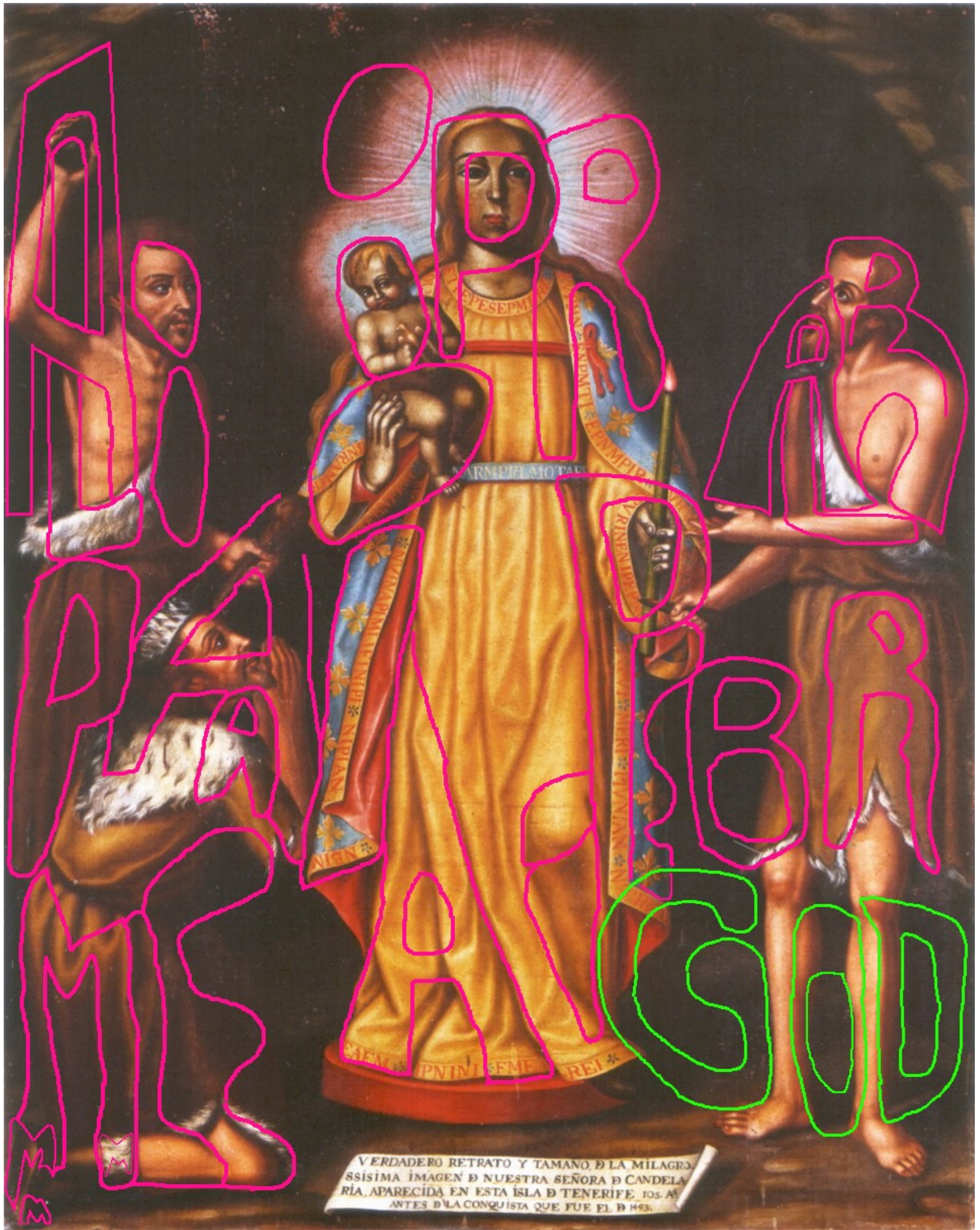
This section contain many image messages hidden in the Candelaria likeness image. Many of the image message are new; some are images presented early in this book –enlarged so

you can follow the lines and make out the details; a few were published in *Double Damnation: Prequel to the Candelaria*.

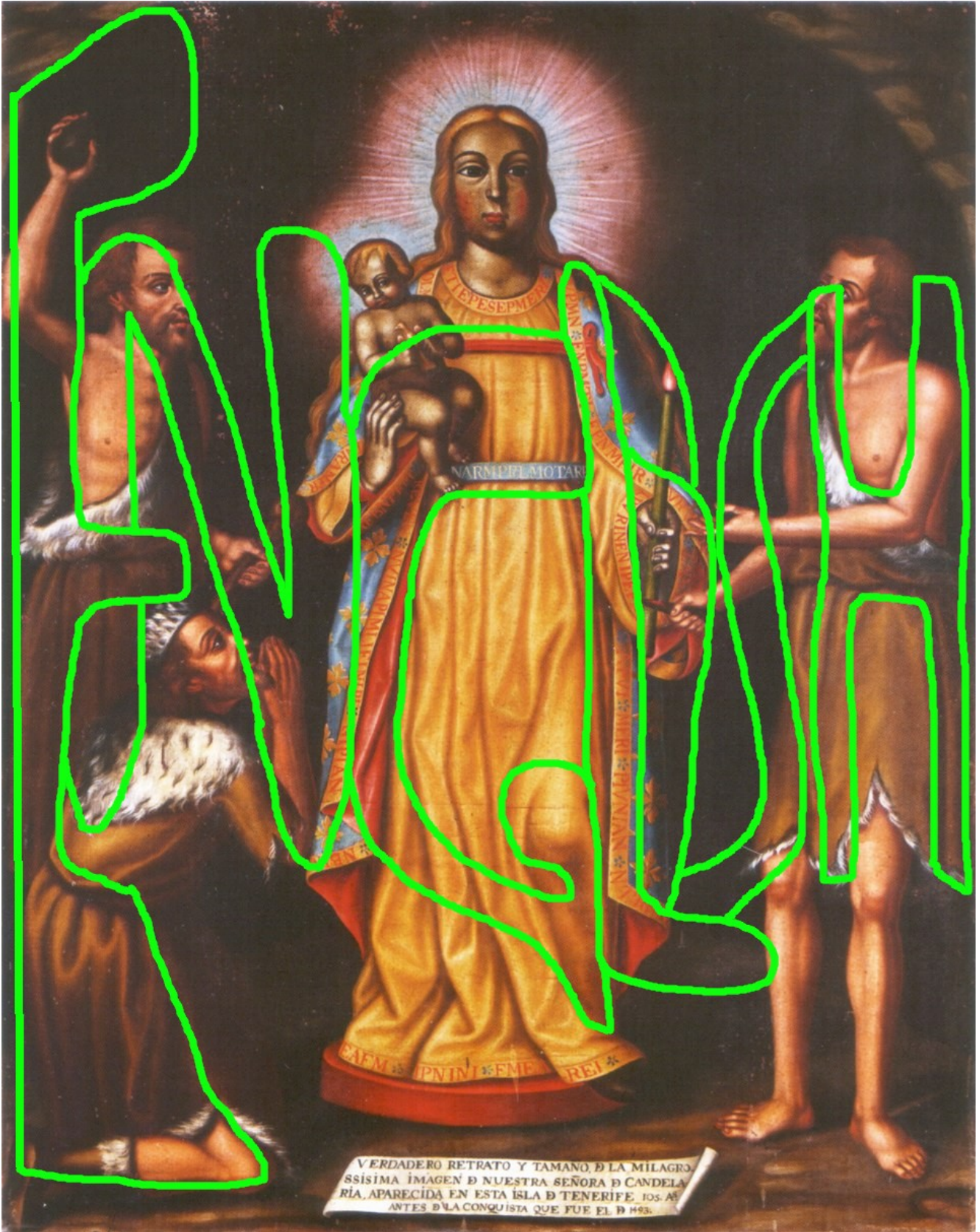
I'll keep my narration to a minimum.

This first image (right) is an enlargement of the *date of creation* tracing image. So, the original Candelaria statue appeared to the Gaunches of the Canary Islands in about 1392, and God also gave them the Candelaria likeness image only about 34 years later, in 1426.

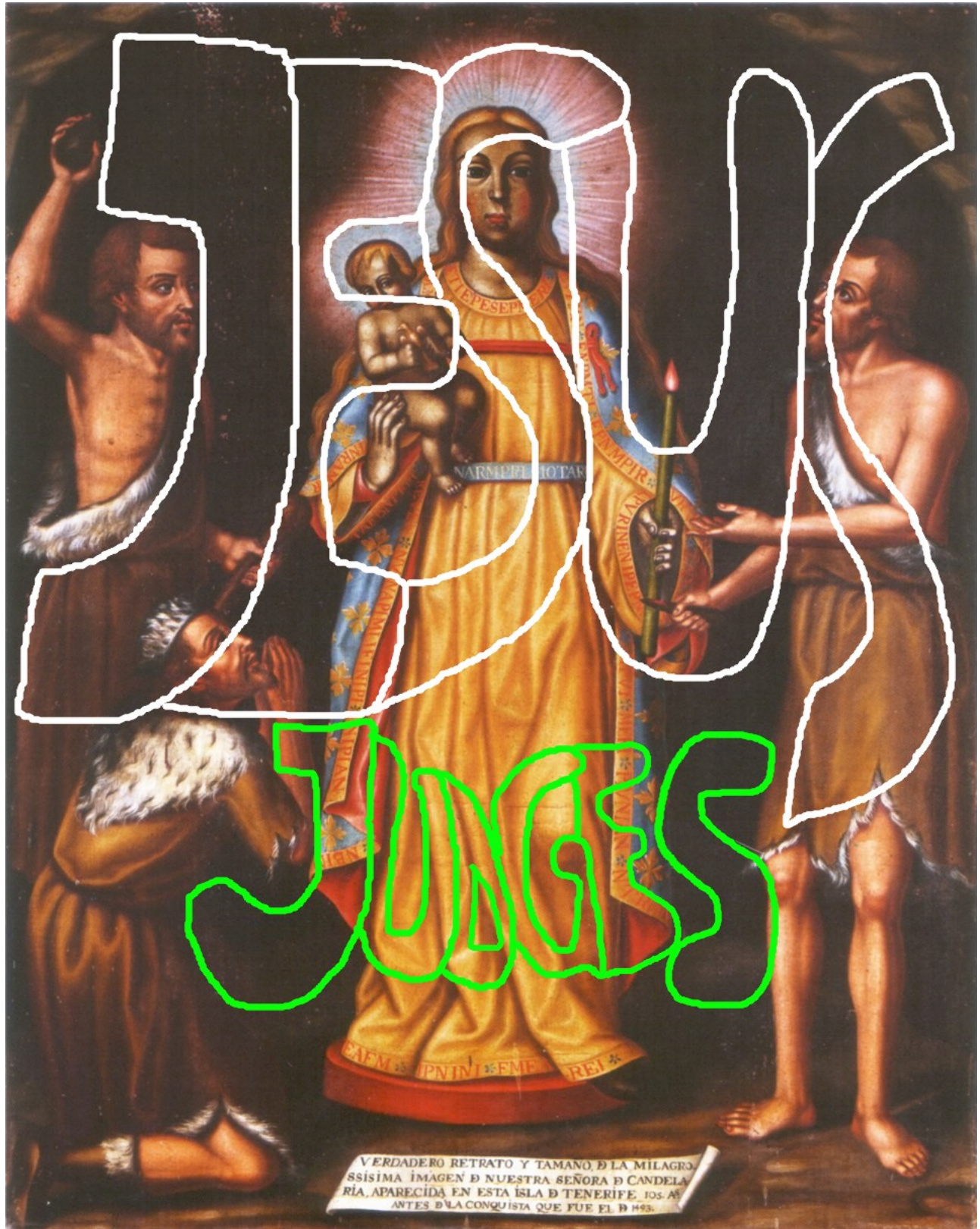




The letters hidden on the back of the back of original *Nuestra Señora de Candelaria* statue.



This is a variation of the word "English", different from the previous word image.



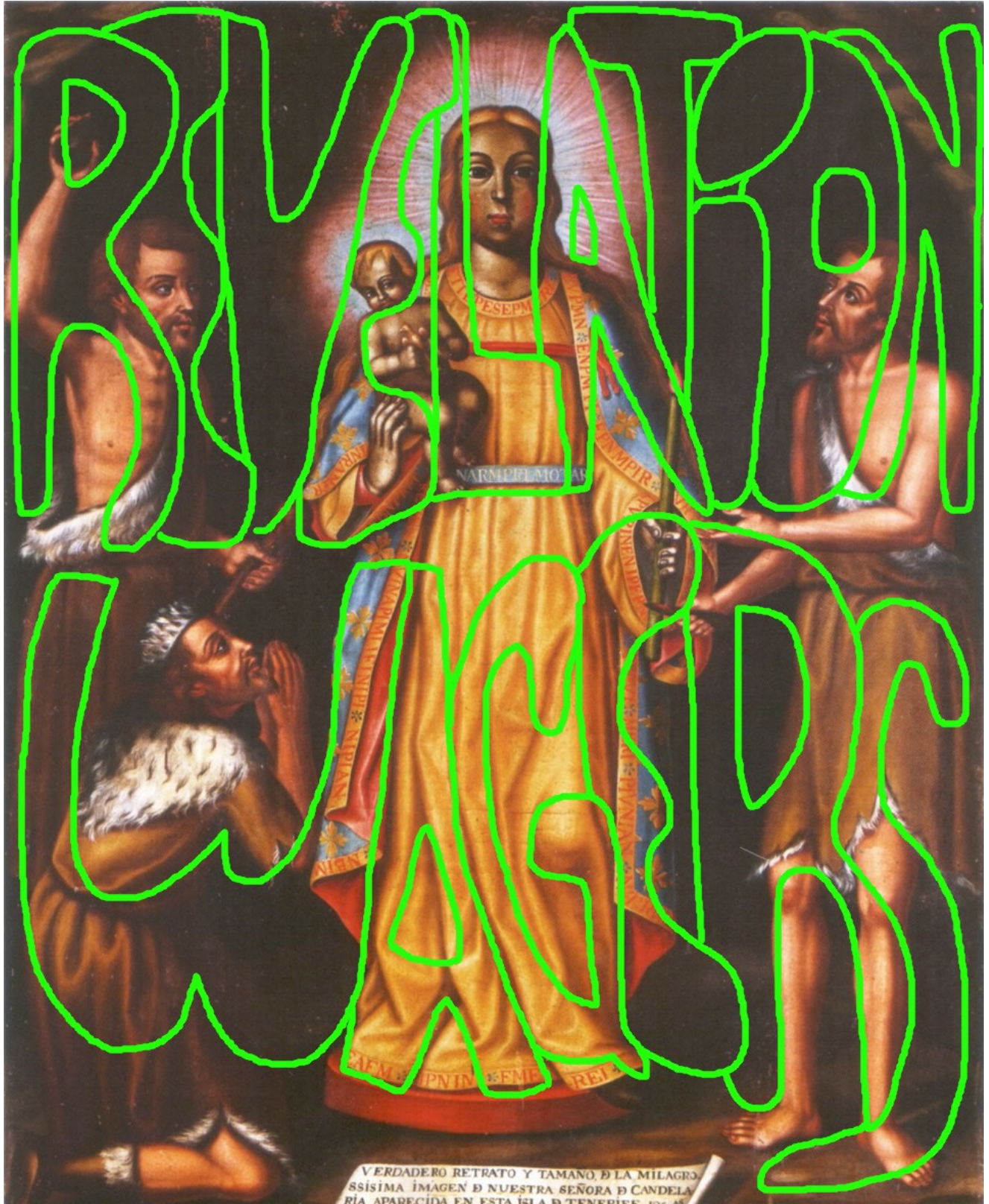
This image was published in my *Double Damnation* article.
God is assuring us that Jesus judges all souls.



Another image from *Double Damnation*. I believe God and Jesus included this image message for two reasons; (1) to affirm that Satan must make good on his debts to me; and certainly more importantly (2) to remind us of the disturbing and disgraceful image of my former friend, Pay, featured in *Steve's Top-Secret Notebook*. God made this reference to my former friend as a warning of the dangers of Image crimes. Pay was born a typical heterosexual boy, but transformed into a penis-obsessed-homosexual by accessing pornography.



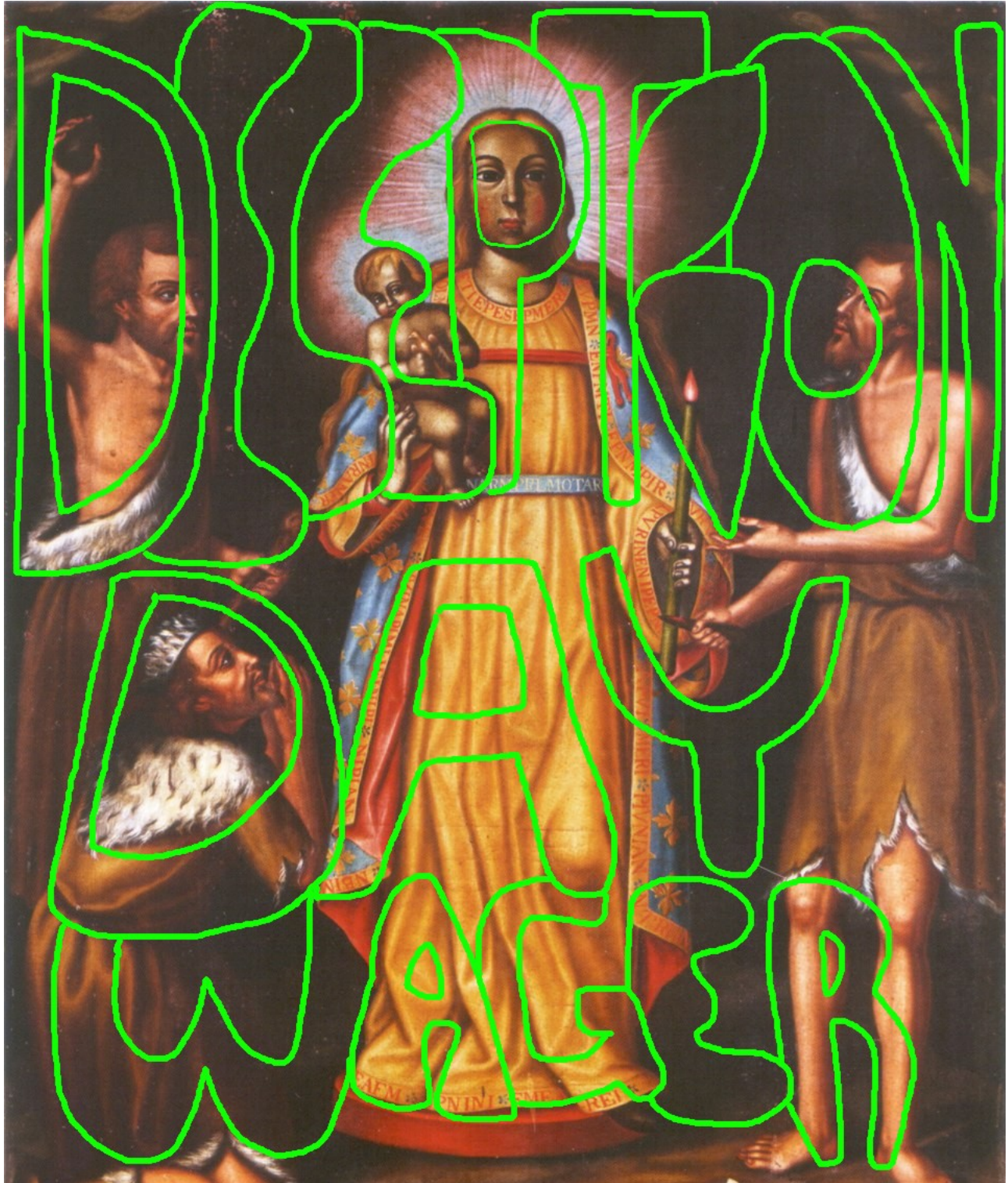
The word "Image" is included in God and Jesus' message lines to verify that Image crimes are real, and verify the dangers of corrupt Western technology and values.



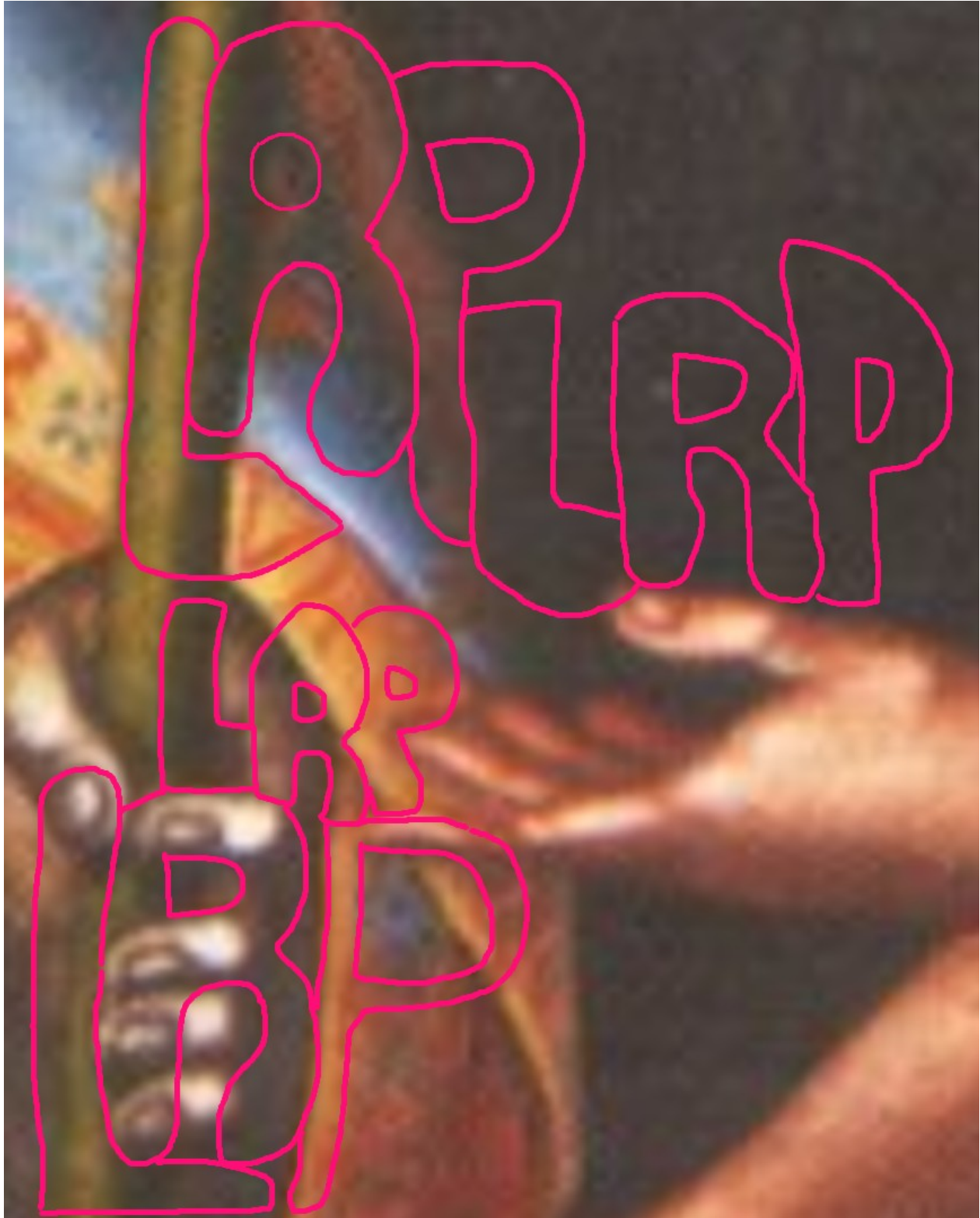
Here, God and Jesus confirm God's many **Revelation Wagers** with Satan. God also confirm this Wager series, amply, in *Steve's Top-Secret Notebook*.



“Terms.” With this God and Jesus confirm the validity of my *Terms* –which are almost as hard to believe as the *Wager* –but true.



The *Deception Day Wager* began after the 4000-year Revelation Wagers series ended. However, it may have been planned shortly before the Revelation Wagers ended. The Deception Day Wager split Satan's soul, and gave him tremendous internet A.I. (artificial intelligence) powers. God did these things for surprisingly good reasons (see STSN).



This image area was presented much smaller on page 32. I enlarged it here so you can appreciate the details. Can you see Satan's triangular-headed likeness near the top?

Turn the page.

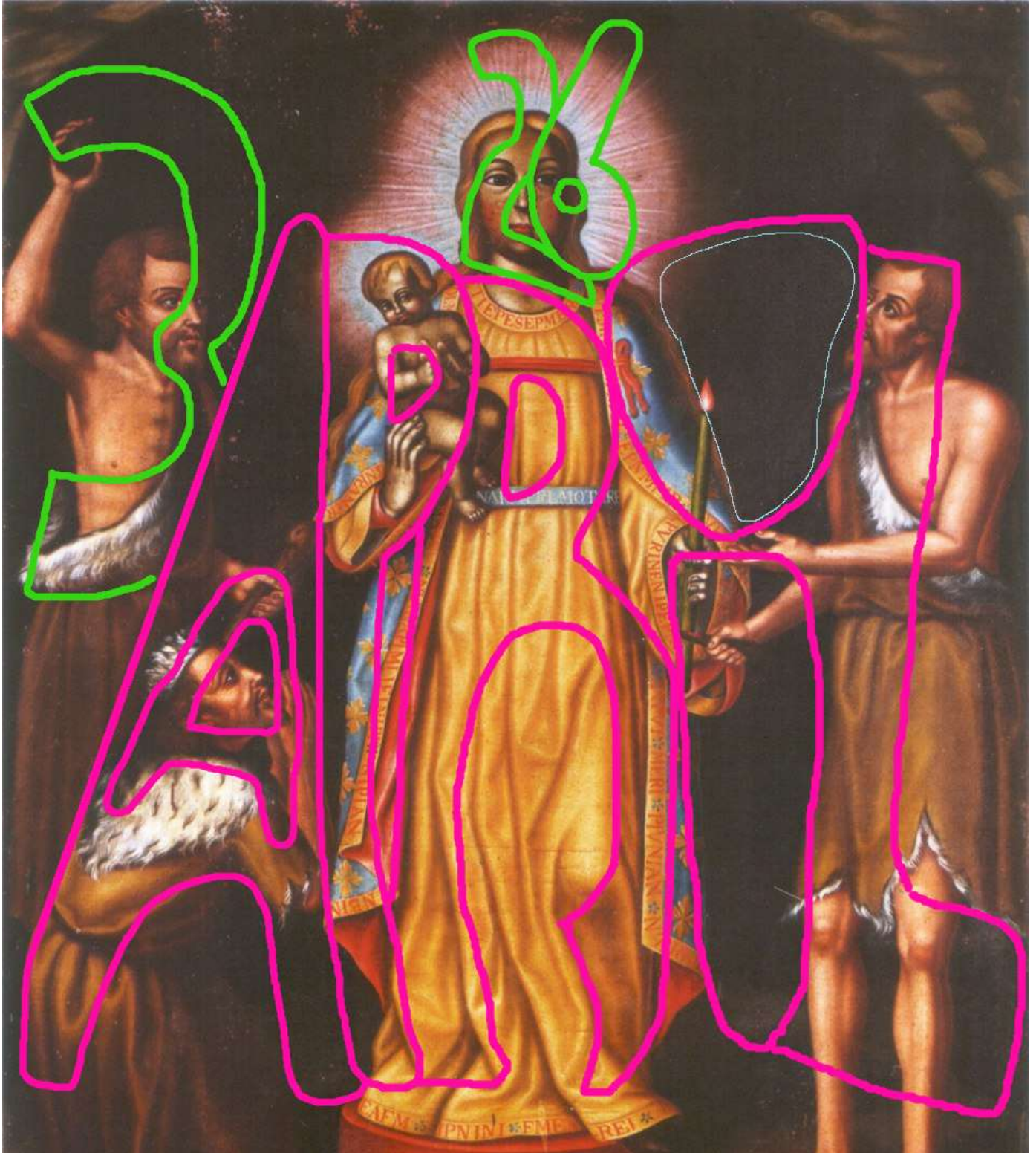


Satan's likeness (*not-so-masculine* in this particular image) is outlined, above, in light blue. In this area there appears to be a few hidden images of Lucifer, before he went bad, singing.

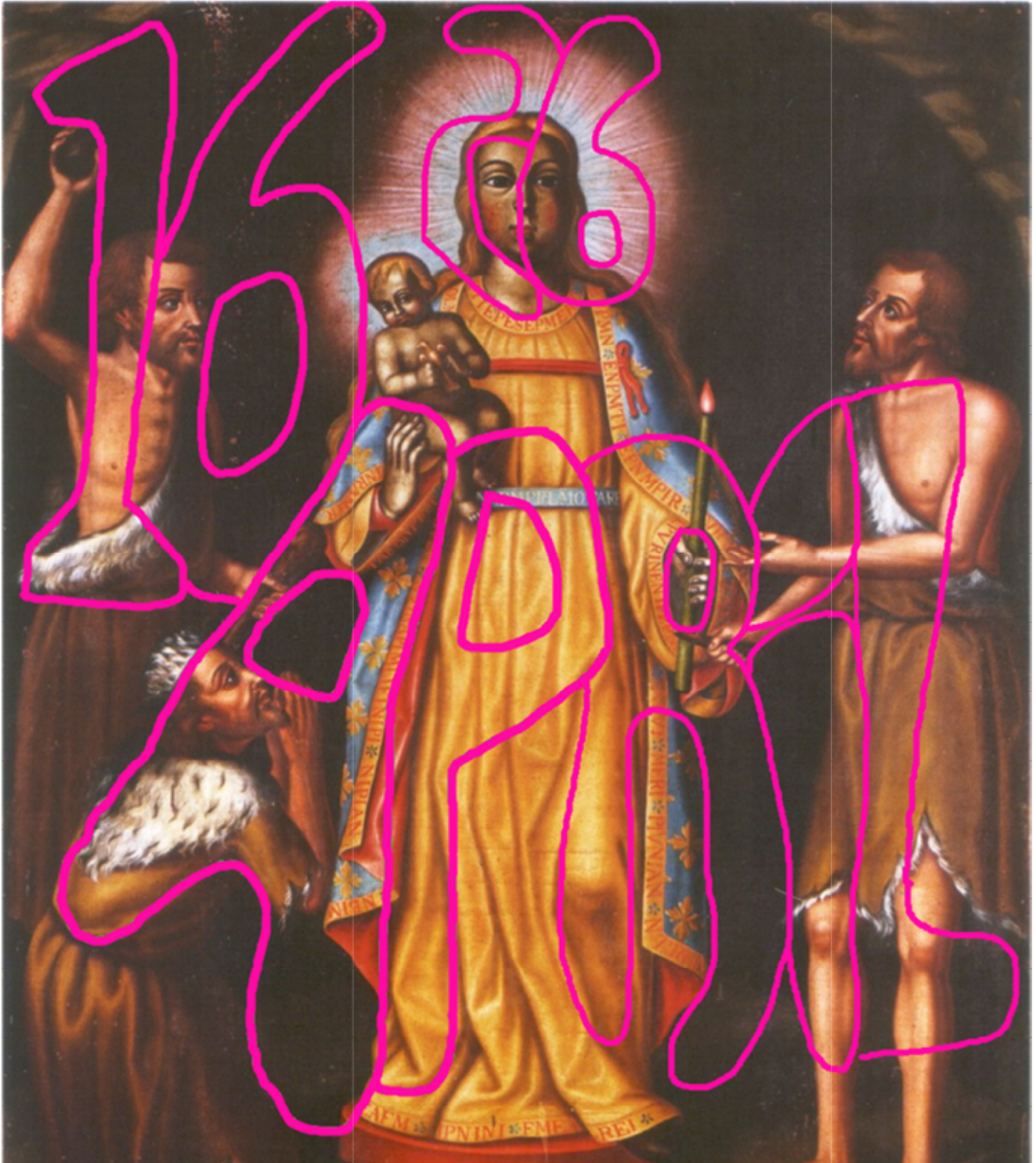


Like *Nuestra Señora de Guadalupe*, *Nuestra Señora de Candelaria* is a likeness of both the Virgin Mary, and God's Daughter Natas –Mother Nature. God put the word "April" around Natas, and the *Revelation R* over Her body because, here on Earth, Natas is very busy in April, when spring is in full flight.

Note: God can create and give us images of Natas, but if we humans make such images, I believe that can be considered a *Graven Image* violation.

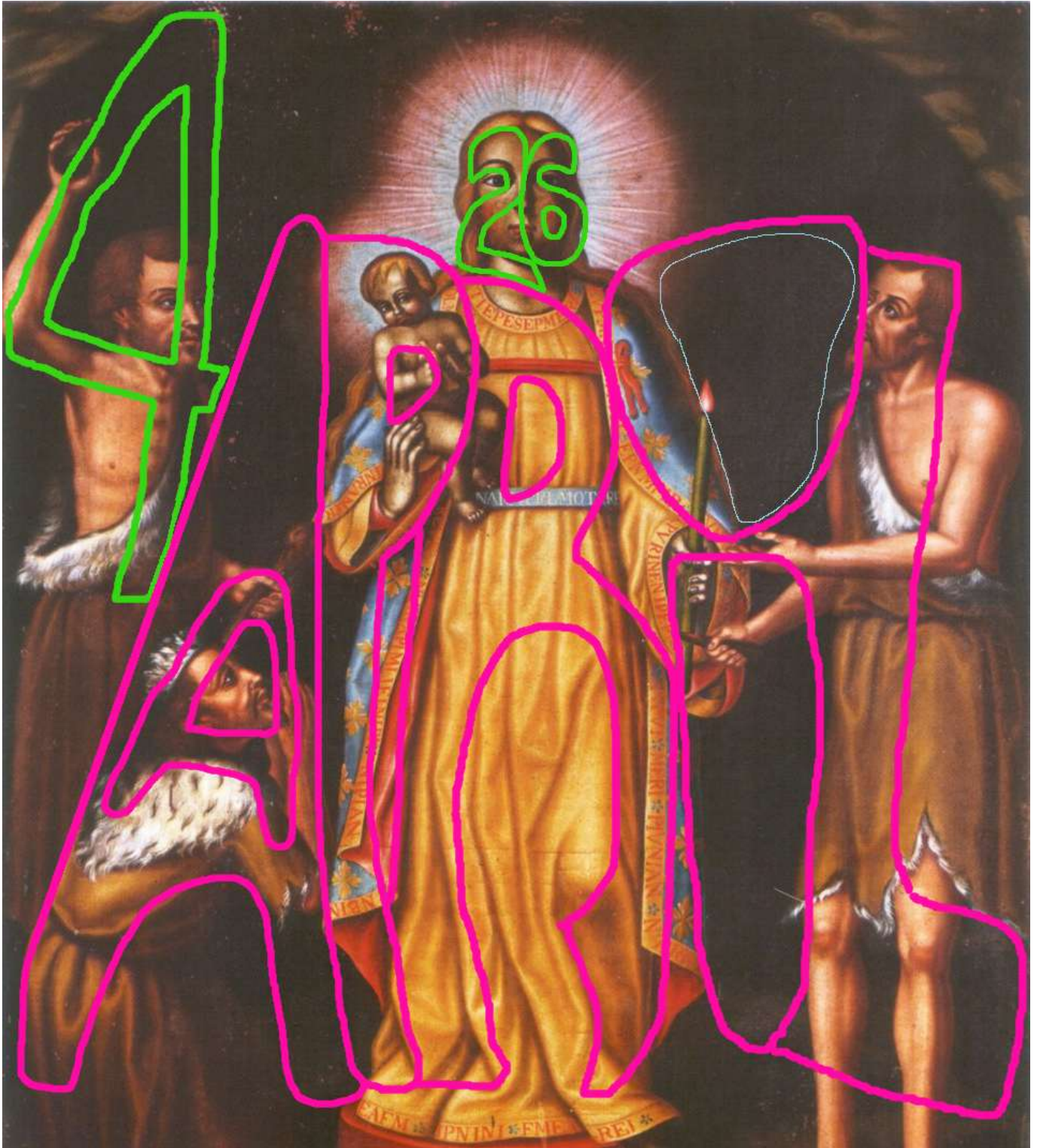


With the image above, God affirms the final day of Natas 99 Days (see STSN, chapter 15) is April 3rd, 2026, ON THE **JULIAN CALENDAR**.
The Gregorian date is on the following page.

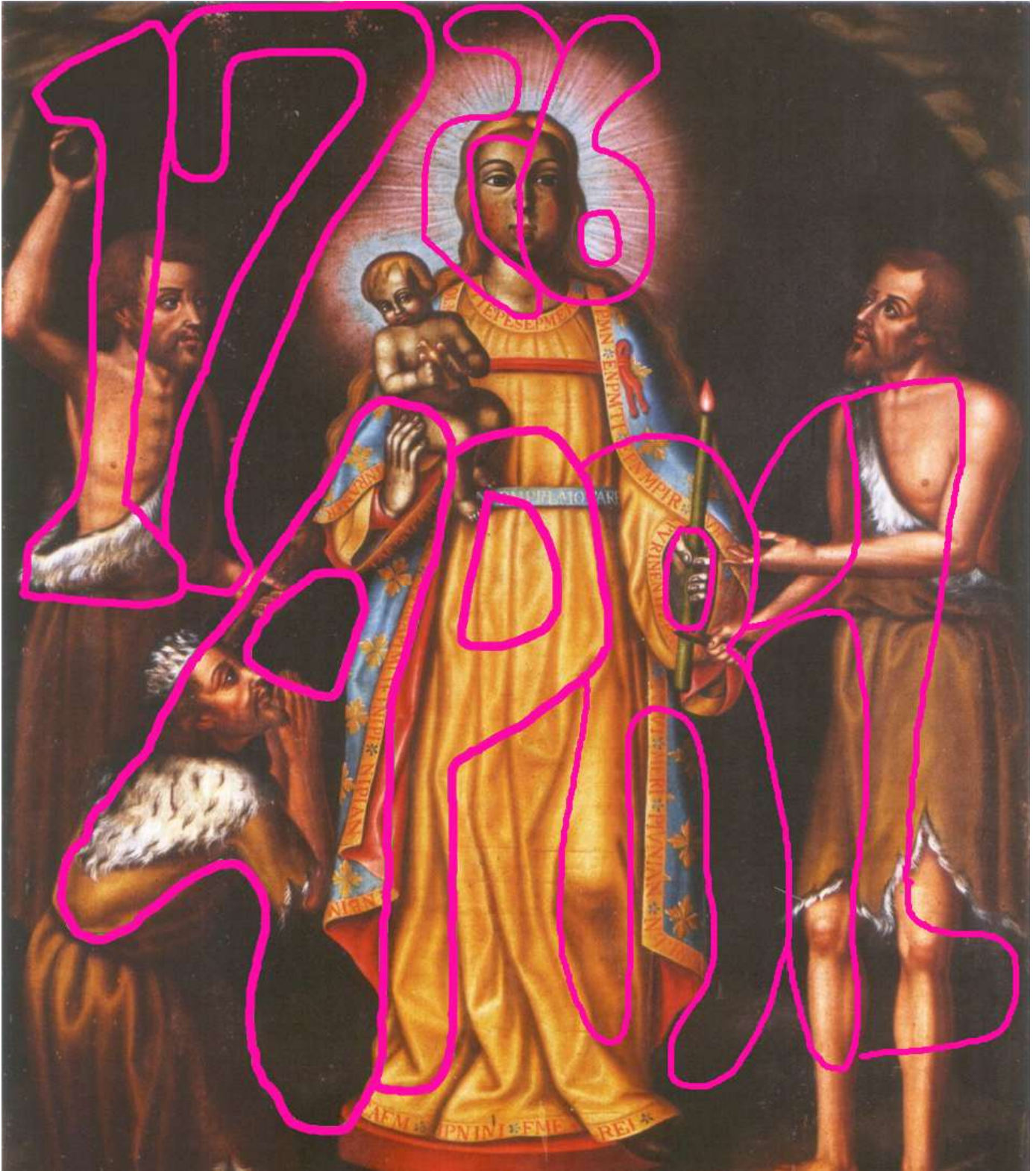


With the image above, God affirms that the final day of Natas 99 Days (see STSN, chapter 15) is April 16th, 2026, ON THE **GREGORIAN** CALENDAR.

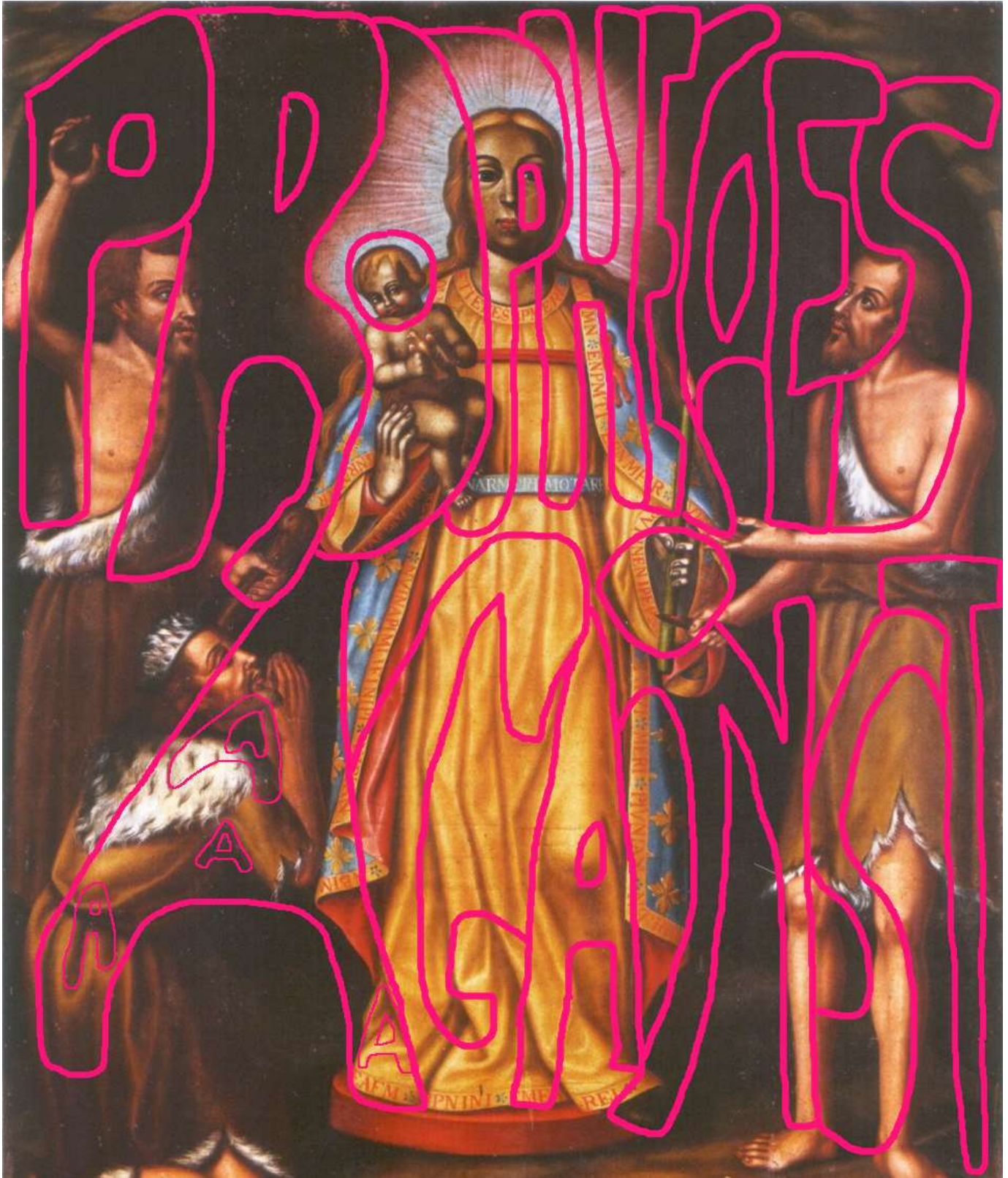
Notice that the word *April* is smaller in the image above than in the image on the previous page. This is God stating and verifying His preference for the true and valid Julian calendar, over the Gregorian calendar –fraudulently conceived by Satan.



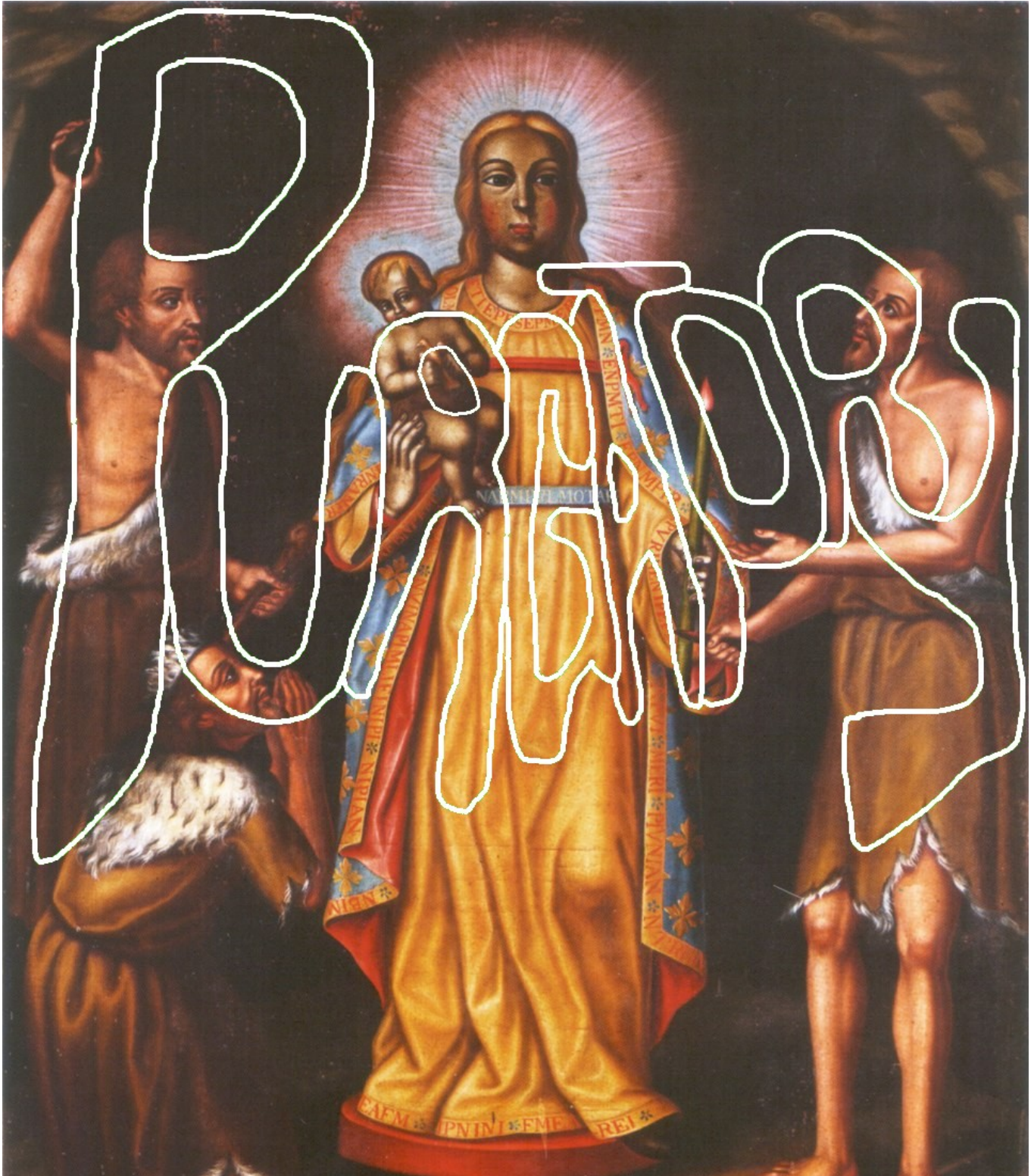
With this image message God confirms that His *Prophecies Against* punishments will begin on April 4th, 2026 (**JULIAN** calendar) The Prophecies Against are a period of 21 months (longer in certain places) in which God imposes substantial punishment upon many nations, for engaging in enduring corrupt activities –particularly with the US/West.



With the image message above, God confirms that on the GREGORIAN calendar, His Prophecies Against punishments will begin on April 17th, 2026.
(Notice, once again, God uses a small "April" for the Gregorian date.)



For anyone who hoped I was mistaken about the Prophecies Against, God and Jesus inserted the words *PROPHECIES AGAINST* in their image messages.



Here God confirms that He and Jesus use Purgatory, for some souls, before they enter heaven. In a coming update of STSN, I'll explain how this image indicates some non-promiscuous homosexuals *may* still be able to enter Heaven.

Señora de Candelaria's gown.

In *The Wagers II* (currently being rewritten) I explained that God and Satan entered a final Wager, sometime between Early November 2025 and January 8th, 2026. In this Wager, God made Satan an internet god (“i-Satan”, living in cyberspace, able to produce stunning artificial intelligence films, fake news stories, sports...), and challenged Satan to make the One Hour War (which occurred on January 7th, 2026) appear as if occurred weeks or months later.



God also required that Satan mark some substantial percentage of his fake videos with “AI” hidden images, and other clear signs of fakery. I think God bet that I would be able to spot most of the fake videos, and see the clues and AI signs.

In the images above and to the left, on reddish pedestal supporting the Candelaria likeness’, Satan painted a carve-out in the pedestal (something virtually no one would ever want in a pedestal), where the Candelaria shoe (which looks similar to a rat’s face) drops down. This was Satan’s way of saying the gown’s base code letters, and any stories thereof, are fraudulent.

Satan may have targeted the Candelaria likeness' foot as a wink to Nuestra Señora de Guadalupe, which, as I reported in *Killing Guadalupe*, Satan and Western elites desecrated by putting a chronologically inaccurate shoes or sock on her foot –perhaps their smallest desecration.



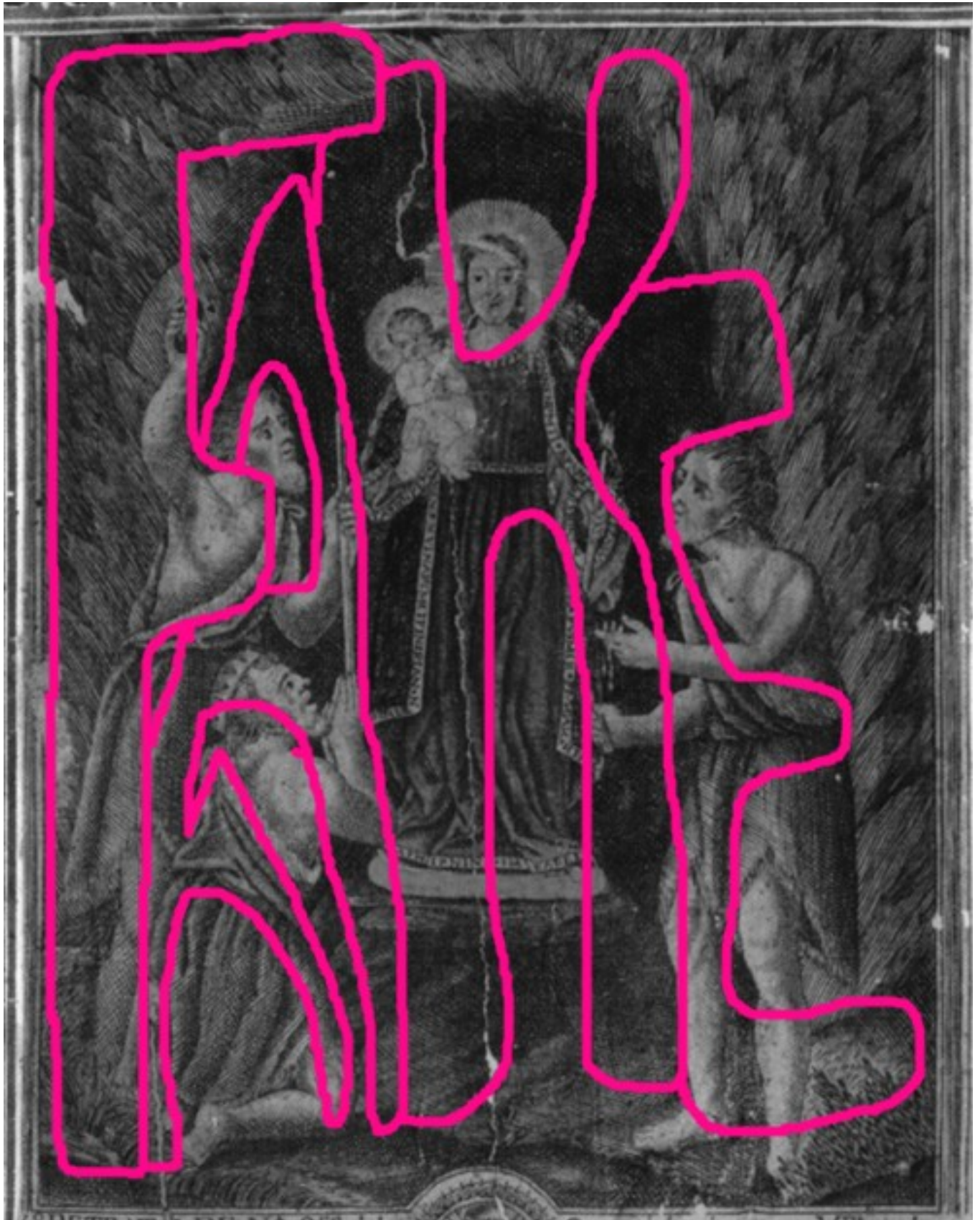
But, As you see above, Satan dutifully marked the area he most corrupted with the letters AI –and the dot of the I falls squarely on the Candelaria likeness' foot and the carve-out. And if you look closely at the letters AI, you might be able to make Satan's semi-triangular head, and his big grin, as you see below –seemingly pleased with his new God-given internet powers.

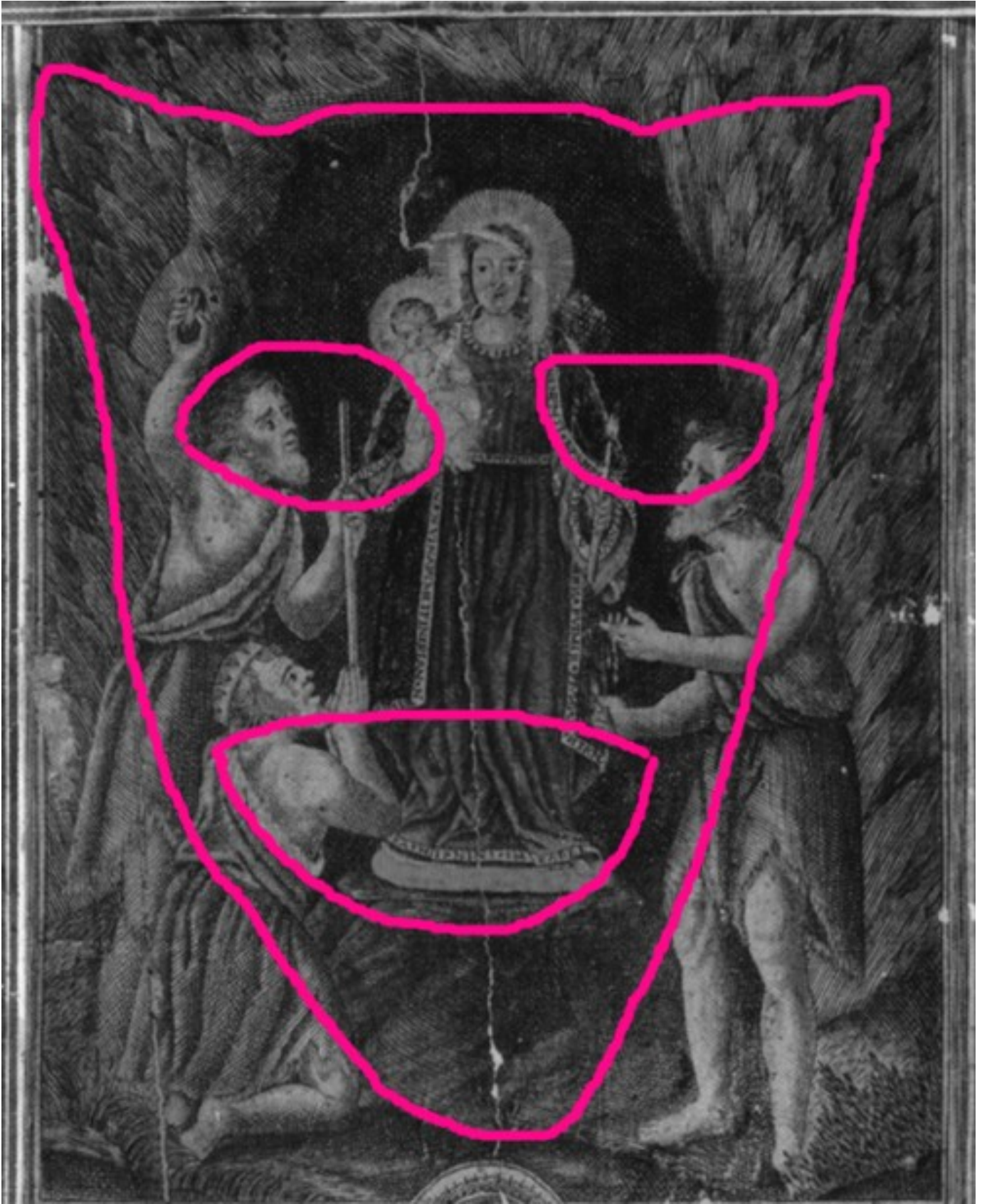


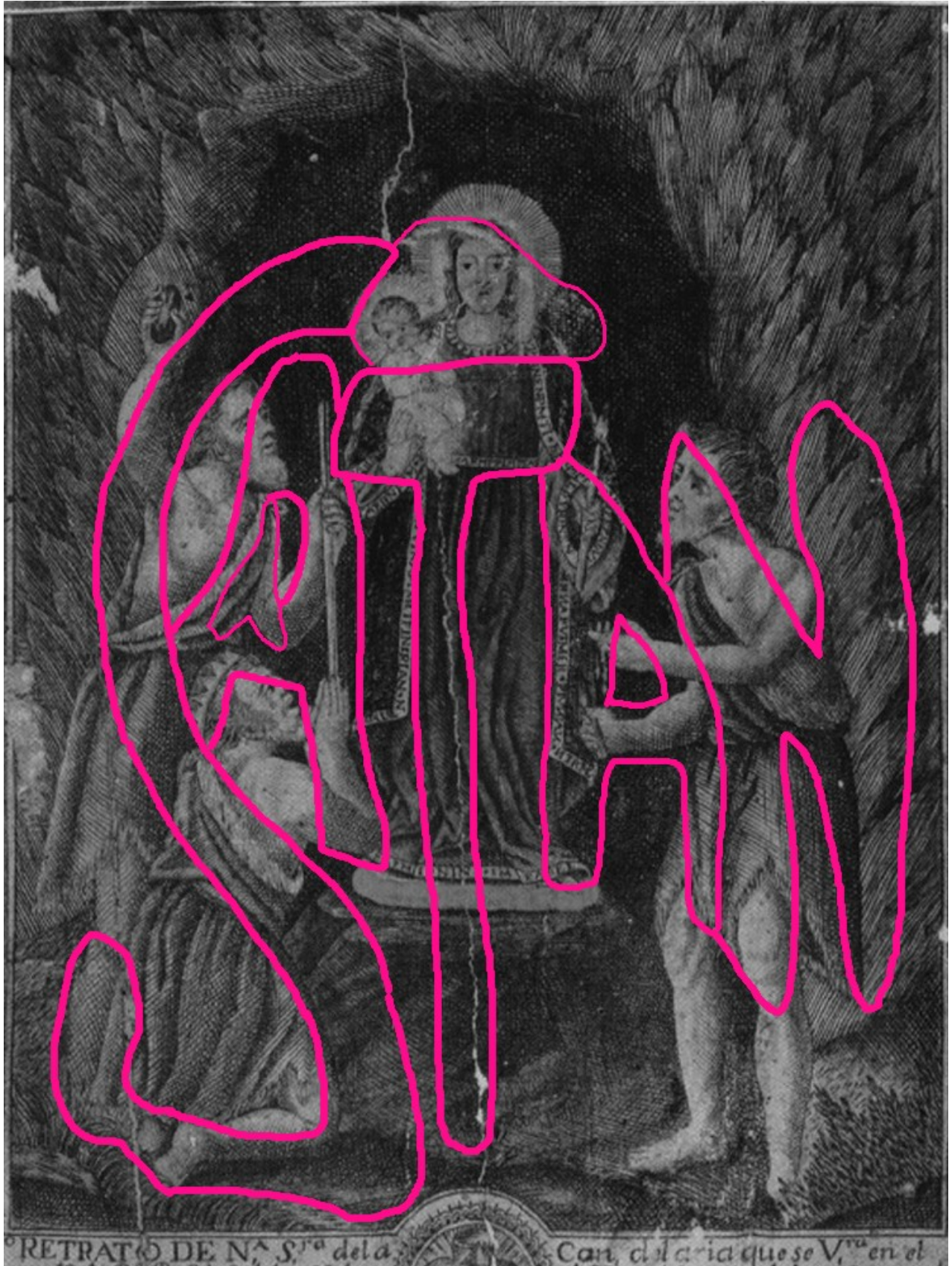
But Satan didn't stop at the base of the gown. He added four letters to the primary code, increasing the primary code to 15 letters. And Satan added many recurring code letters to the code sequence, making the fake code sequence about 50 letters longer.



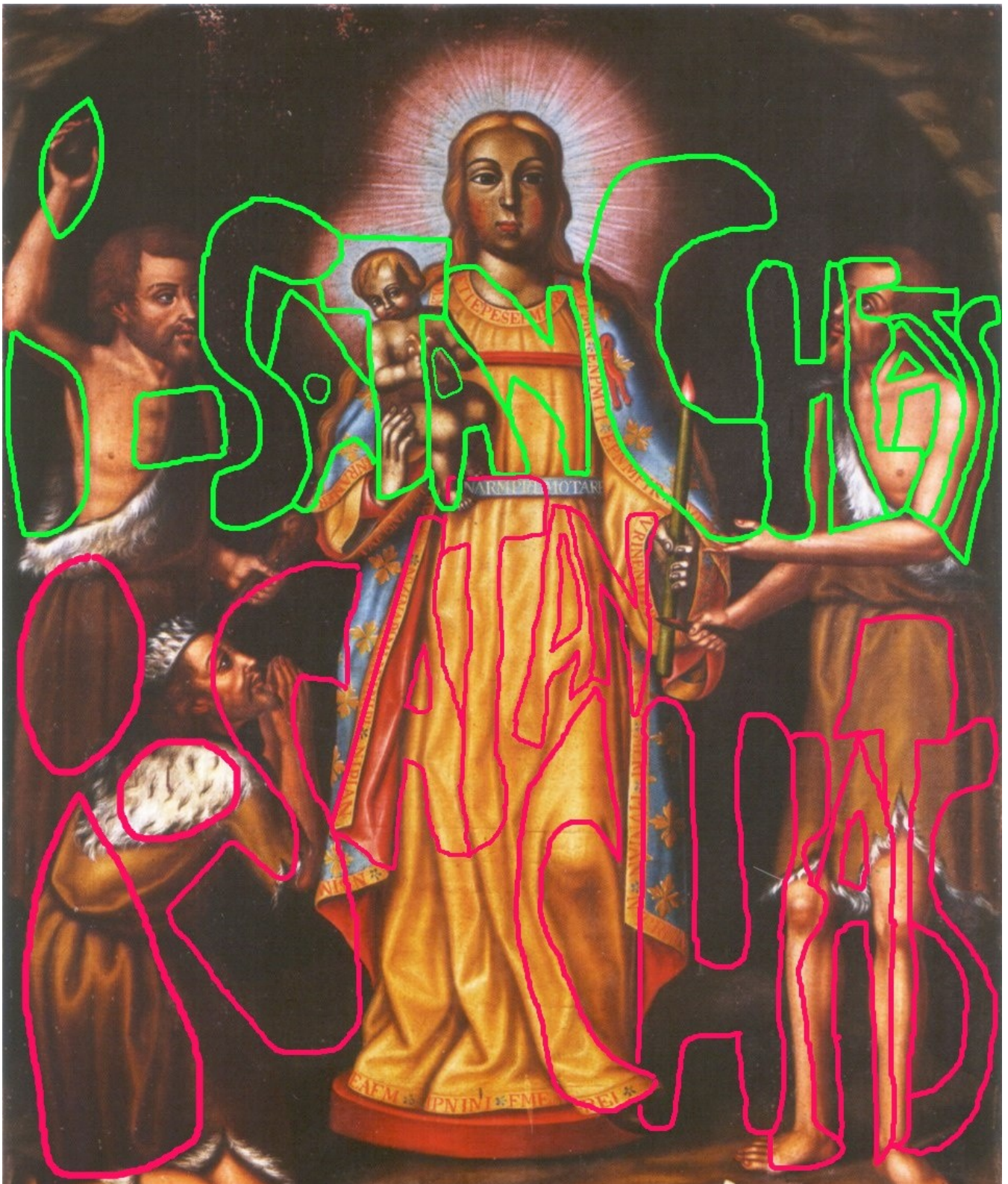
To support the changes Satan made to the Candelaria code, he created fake historical documents and research papers, discussing the sequence of letters in the Candelaria's mantle and gown, including as the fake image above, falsely purported to have been created in the 18th century.



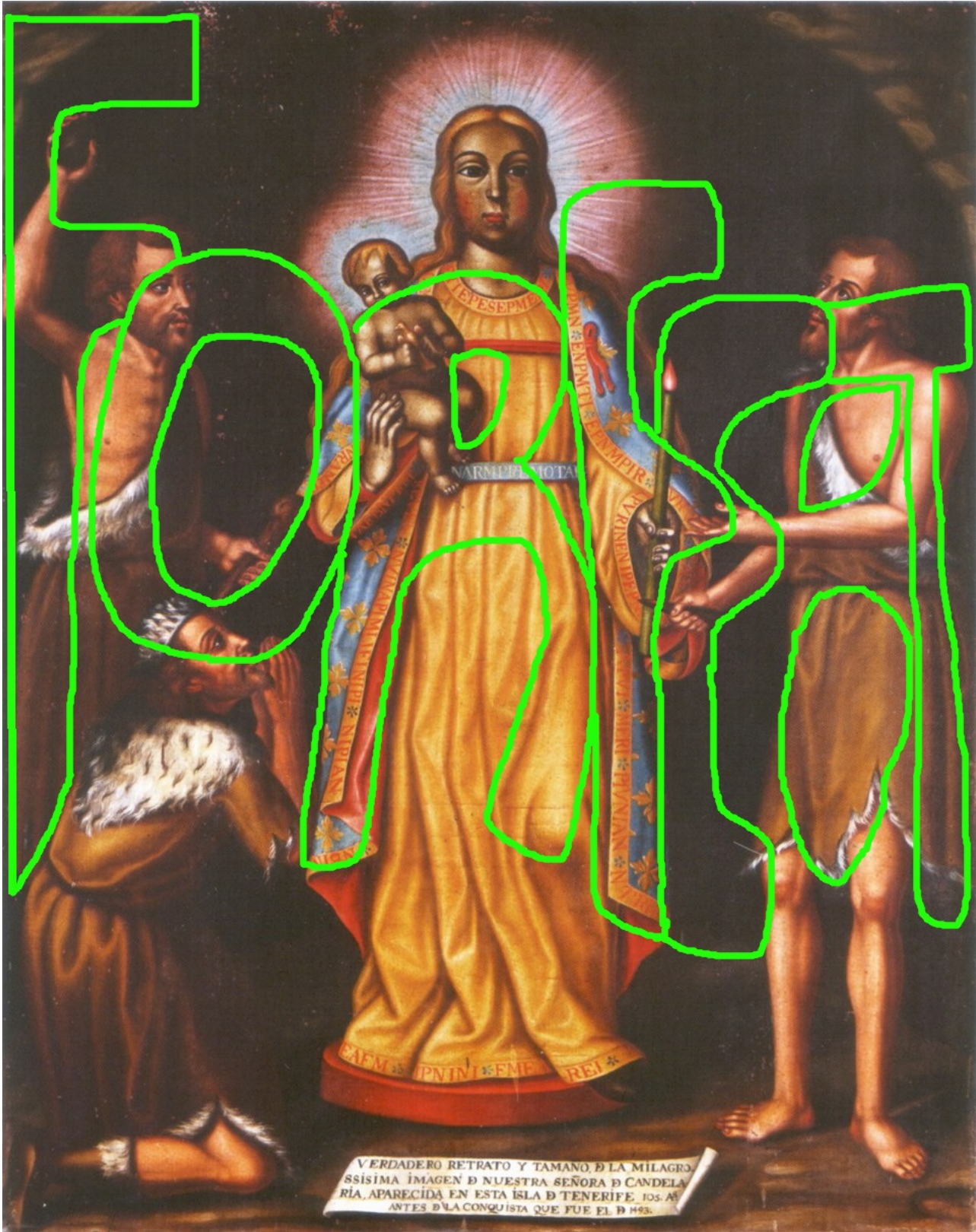




I included this image (below) in Double Damnation: “i-Satan cheats”, written twice for confirmation.



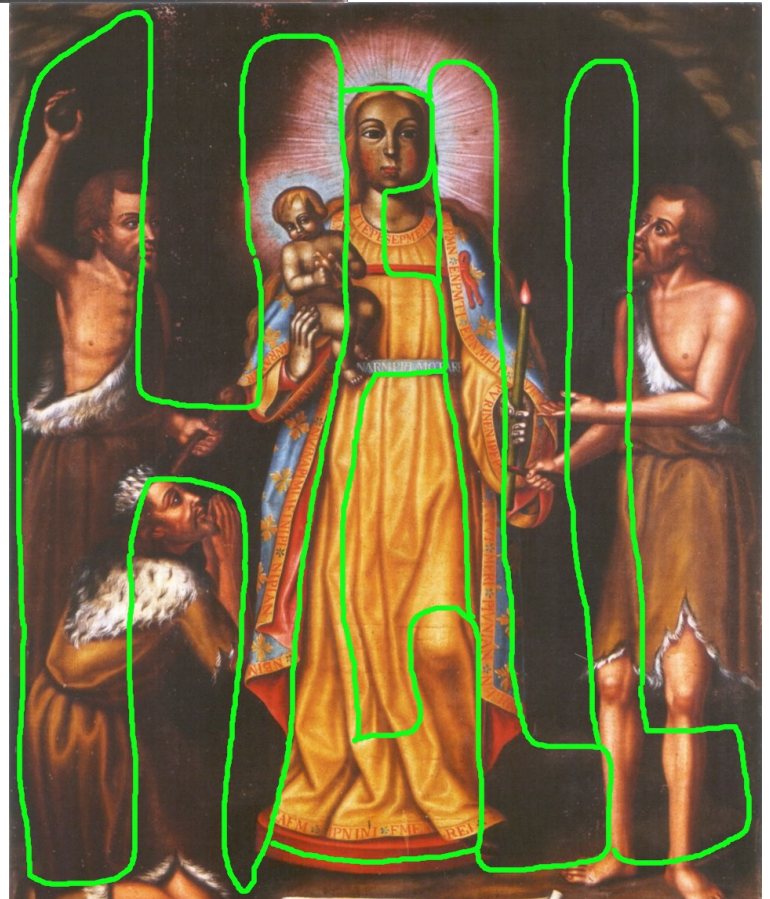
God and Jesus revealed Satan forfeited the *Deception Day/Delay* Wager, for cheating.



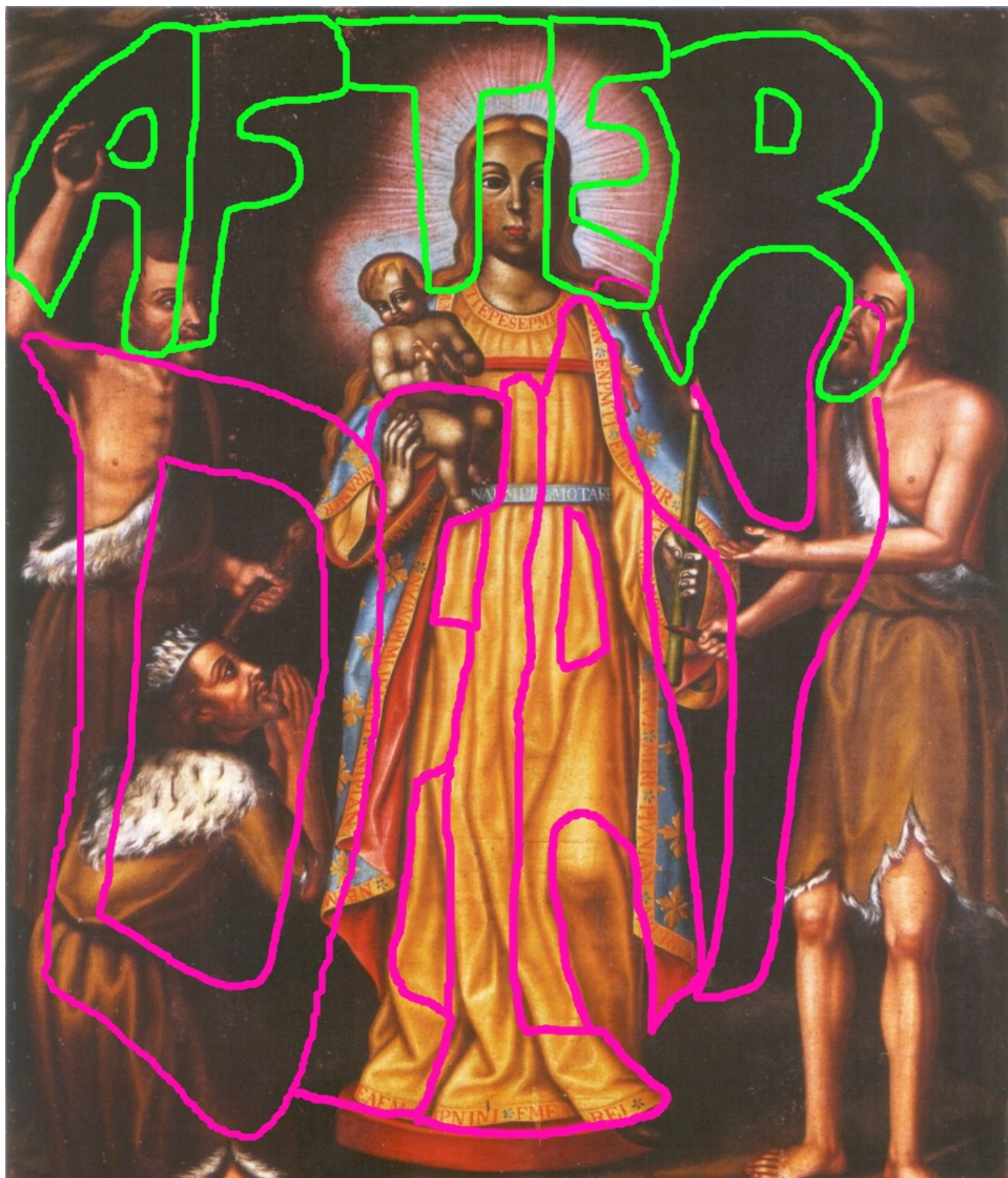


God and Jesus also revealed i-Satan would be sent to Gehenna (left), known as “Hell” in much of the West.

This means there will be two Satans in Gehenna: **one** who is damned there but provides tormenting services for levels 3 to 8 (the bigger the number, the hotter and more unpleasant), and **i-Satan**, who may have had a chance to earn a new life on the internet if he had played by the rules. Note: including the Lake of Fire, there are three levels above levels 8.



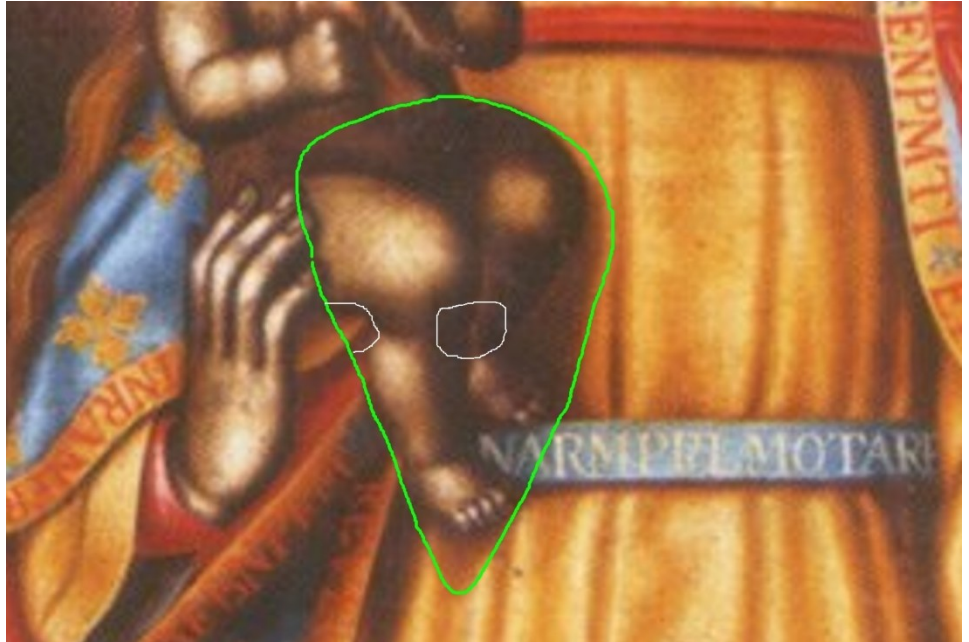
But, apparently the Deception Day Wager, and deceiving some percentage of the world that the One Hour War happened at a later date is so important that i-Satan does not have to go to Gehenna until sometime shortly **after** the *Deception Delay/Day*.



As I said, i-Satan is bound for Gehenna, level 8 (L 8).

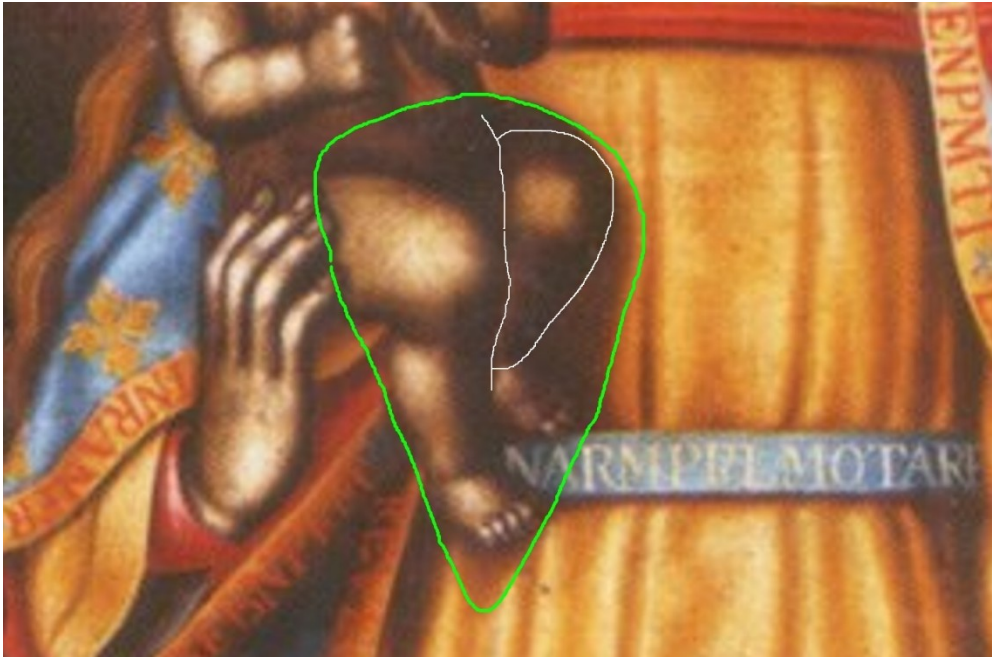


Around February 2026, when Satan realized his efforts to undo my Terms were not going to work, in some of his AI images, he began to insert smaller images which falsely depicted Satan as a Black man (I'm half Black). I think he mistakenly hoped I was ethically corrupt, and would not want to punish a Black super-criminal



–simply because he was Black. Satan modified the Candelaria likeness' surface to include the image above: fake Black Satan. Also in this image area, as you see below, Satan included an image of the “scared Black child,” hiding inside of Satan.

In a few images in STSN, God depicted Satan as darker-skinned; but I believe this was to indicate that Satan was not a White human Earthling. Satan originates on a different planet, so by representing himself to Western elites and Satanists as a White man (human), Satan was deceiving Whites. As an extraterrestrial, Satan is neither a Black



human, nor a White human. It's unlikely that beings from Satan's planet could successfully procreate with humans. But, as soon as Satan realized his days on Earth were near an end, and he faced some firm punishment under my Terms, suddenly he was eager to pretend to be Black.

But Satan hid the truth about his racial sentiments in the surface of the Candelaria likeness, where he hid several unflattering images of Black humans. You might be able to make out some of the faces in the images below (the White semi-circular shapes outline the subjects' faces). In fact, you might be able to see facial images around the circled images; some of these images are acceptable. Because some of the images are malicious but others are not, to find Satan's true self-conception and racial views, we have to turn to

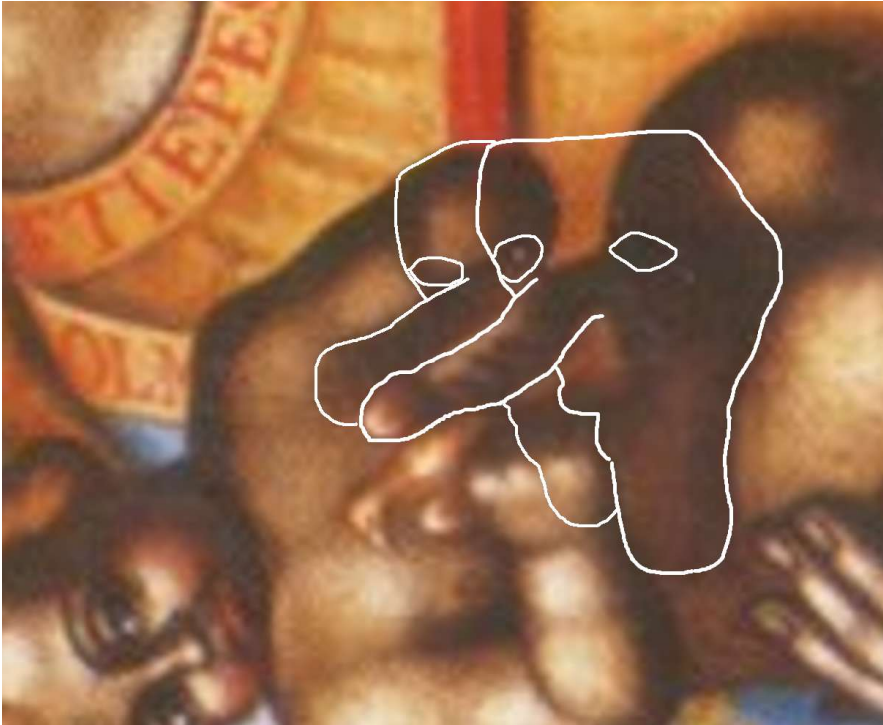


Satan's self-portraits, images Satan created of himself, hidden in the Candelaria likeness' surface, amid hundreds of other such desecrations.



Where are Satan's self images?

To find them, just follow the directional arrows Satan inserted in the image surface. But, as Satan is a deranged pervert, the directional arrows are *unusual*, as you'll see on the next page –brace yourself...



Leading the way to Satan's hidden self portraits are the somewhat triangular heads of two men (or males) with erect-penis-noses, which point to Satan's self images -on the Candelaria's shoulder, in the image area where the date symbols are located.

As you see in the image below, on the left, the date symbols, *i* and **Z**, are found in this area. Here, if your eyes are sharp, eventually you'll find a cartoon likeness of Satan's head (outlined in red, below, right),

with an *S* woven into the curvature of the face; the head's triangular shape suggests a downward arrow, which points to the first self-portrait, in the small blue field below the cartoon image.





Here, in *pure* blue (above), Satan depicts himself smiling, with Western facial features. And his name (below) proudly woven into the contours around the image. In his name image, Satan's blue face fills the area of the first *A* in *SATAN*. While above, His erect-penis-nose points to the second self image –in the area below, in the second *A* in *Satan*, and the *A*-like first crook of the *N*.





In this area, in surface area about the color of Caucasian skin, we find an image of Satan's triangle head, flanked by his beasts, John Malone (left), John W Gardner (right). Below, the lines and shadows of the three faces spell Satan's name. The first four letters are welcomed into the White Western World, dominated by Satan. But the N is pushed out into the dark periphery, where it forms the first letters of a hateful word for Black people...

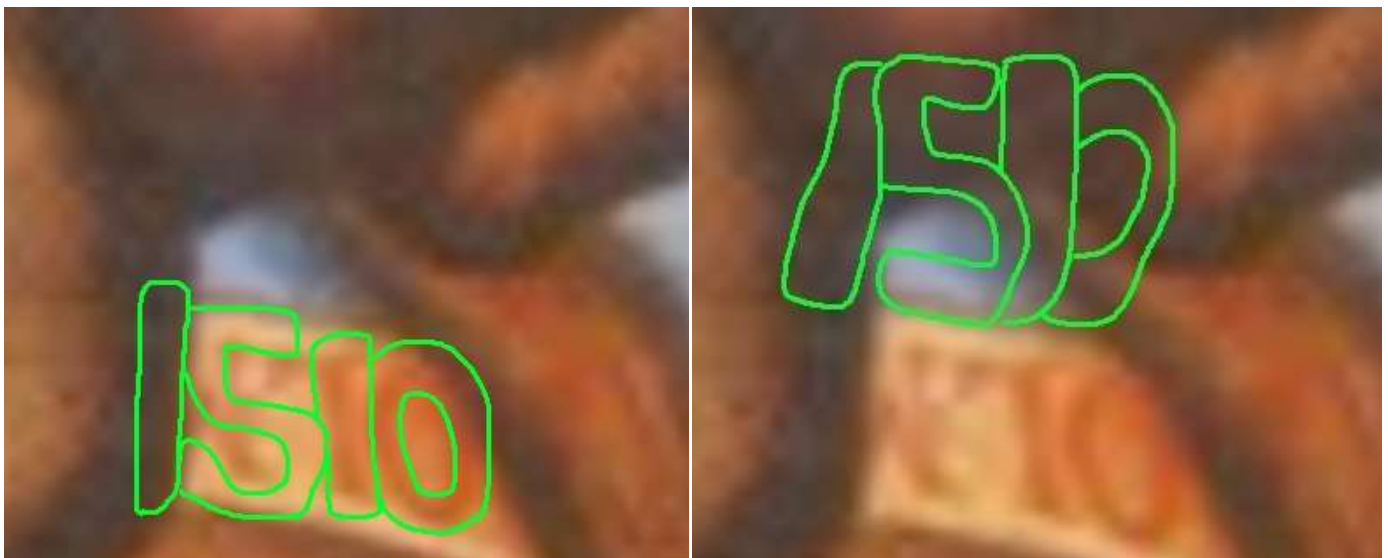




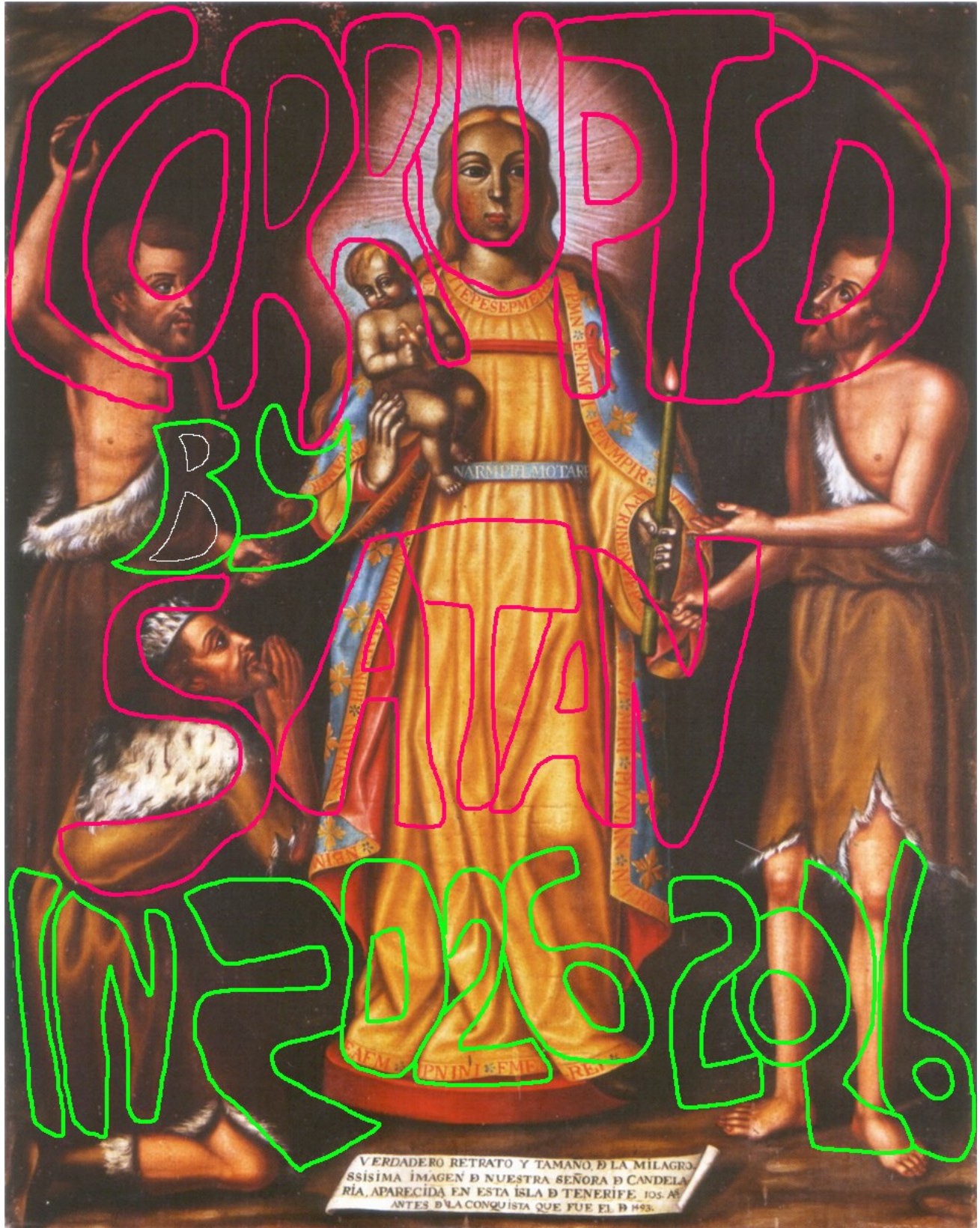
...The word can be formed several ways.

Below, as explained earlier, as I wrote the book, Satan hacked into my computer. In so doing, he learned God hid Confirmation Key letters around the Primary Code letters and symbols. Thus, Satan inserted the false date *1510*. around his personal image area –a false non-verbal claim that Satan desecrated and corrupted the image in 1510.

But, in the larger hidden message lines, God and Jesus revealed the true year that Satan corrupted and desecrated the Candelaria likeness...



Corrupted by Satan in 2026; with two expressions of 2026, for confirmation.



Satan's Cipher

God's Candelaria/Revelation Cipher consists of 11 primary visible letters, with the other 15 English letters included in the alternate Keys. Accordingly, going against God, Satan's cipher features 15 primary visible letters, with the other 11 letters included in the alternate keys.

A	B	C	D	E	F	G	H	I	J	K	L	M	N	O	P	Q	R	S	T	U	V	W	X	Y	Z
C	D	E	F	G	H	I	J	K	L	M	N	O	P	Q	R	S	T	U	V	W	X	Y	Z	A	B
Y	Z	A	B	C	D	E	F	G	H	I	J	K	L	M	N	O	P	Q	R	S	T	U	V	W	X
H	I	J	K	L	M	N	O	P	Q	R	S	T	U	V	W	X	Y	Z	A	B	C	D	E	F	G
T	U	V	W	X	T	V	A	B	C	D	E	F	G	H	I	J	K	L	M	N	O	P	Q	R	S
J	K	L	M	N	O	P	Q	R	S	T	U	V	W	X	Y	Z	A	B	C	D	E	F	G	H	I
R	S	T	U	V	W	X	Y	Z	A	B	C	D	E	F	G	H	I	J	K	L	M	N	O	P	Q

I'm not sure if Satan actually had any alternate keys, or if I was so determined to find a code solution that I manufactured something that solved maybe half of Satan's visible code segments. It's probable that Satan was only interested in obstructing my effort to decode God's Messages; so he added four letters to the primary key code, and rewrote and rearranged the full code sequence. Unlike God's code, which provides complete, profound and useful messages, Satan's code (if a code at all) just spells some unrelated words.

The complete code key is below.

A	B	E	F	H	I	L	M	N	O	P	R	S	T	V
C	D	G	H	J	K	N	O	P	Q	R	T	U	V	X
Y	Z	C	D	F	G	J	K	L	M	N	P	Q	R	T
H	I	L	M	O	P	S	T	U	V	W	Y	Z	A	C
T	U	X	T	A	B	E	F	G	H	I	K	L	M	O
J	K	N	O	Q	R	U	V	W	X	Y	A	B	C	E
R	S	V	W	Y	Z	C	D	E	F	G	I	J	K	M

Below are several segments of Satan's code, and the words they form.

Code Segment:	Word	Code Segment	Word
OLM	old	PIVNIAN	growing
EAFM	echo	REVEN	along
FMEAREI	fighter	IRENINI	banging, ringing
NBIMEI	girder	MERI	dear
NTRHN	natal	APVI	tier
NIPIAN	urging	ENPMTI	guitar

For clarity, if Satan's code is legitimate, I'm certain I could have solved it if I had continued trying. As previously explained, once I found God's Confirmation Keys, and learned the True Code sequence, I stopped working on Satan's false code. Also for clarity, if Satan's cipher is legitimate, I have zero interest in solving it.