



META SMART  
WHERE INSIGHT MEETS INGENUITY

---

# EYES Value Proposition

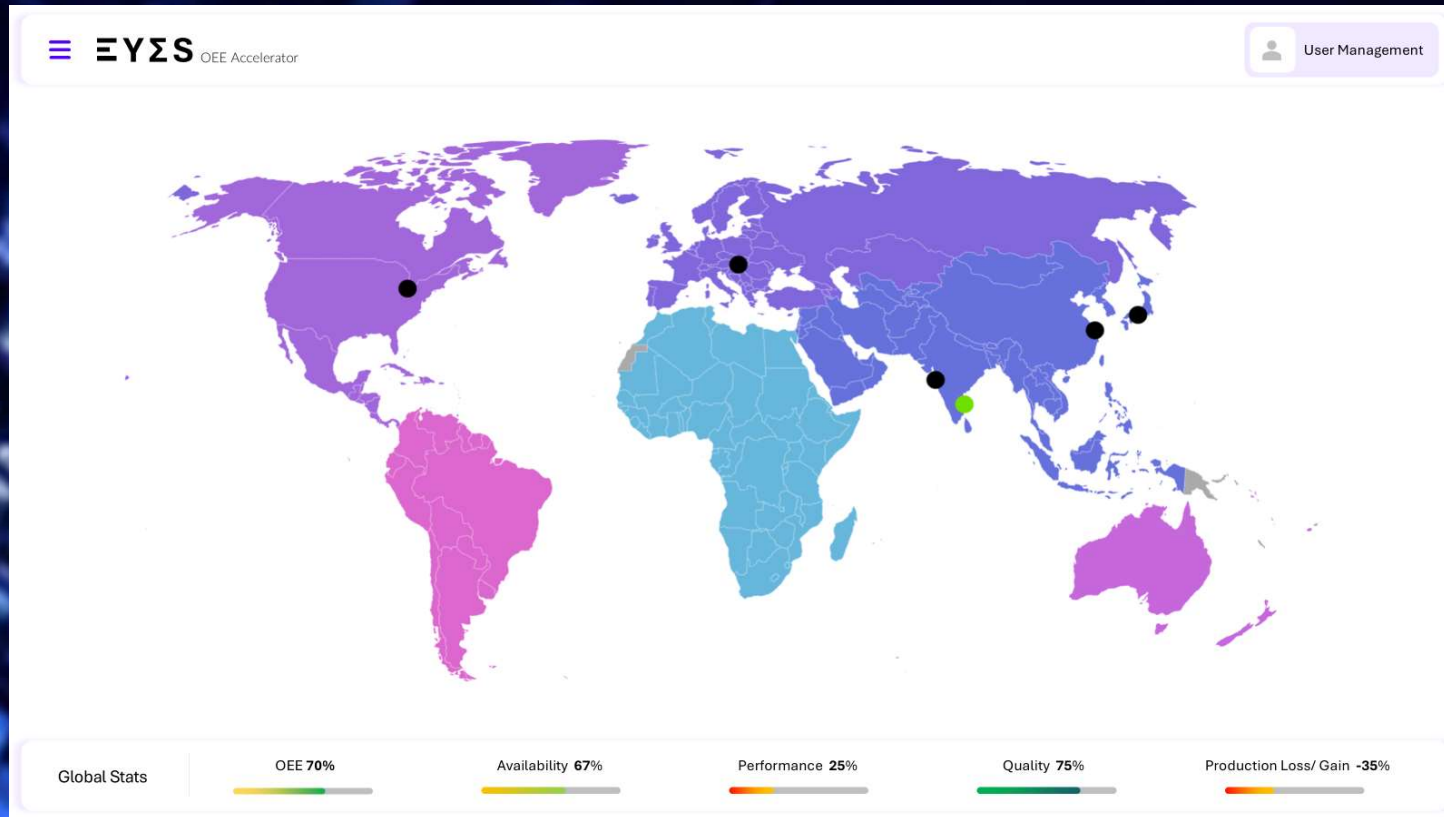
March 2025



# EYES Capabilities

# Global View

## KPIs by Plant



# Plant Overview

## KPIs and Production Status



1. KPIs and trends
2. Production Status by Line

# Plant View

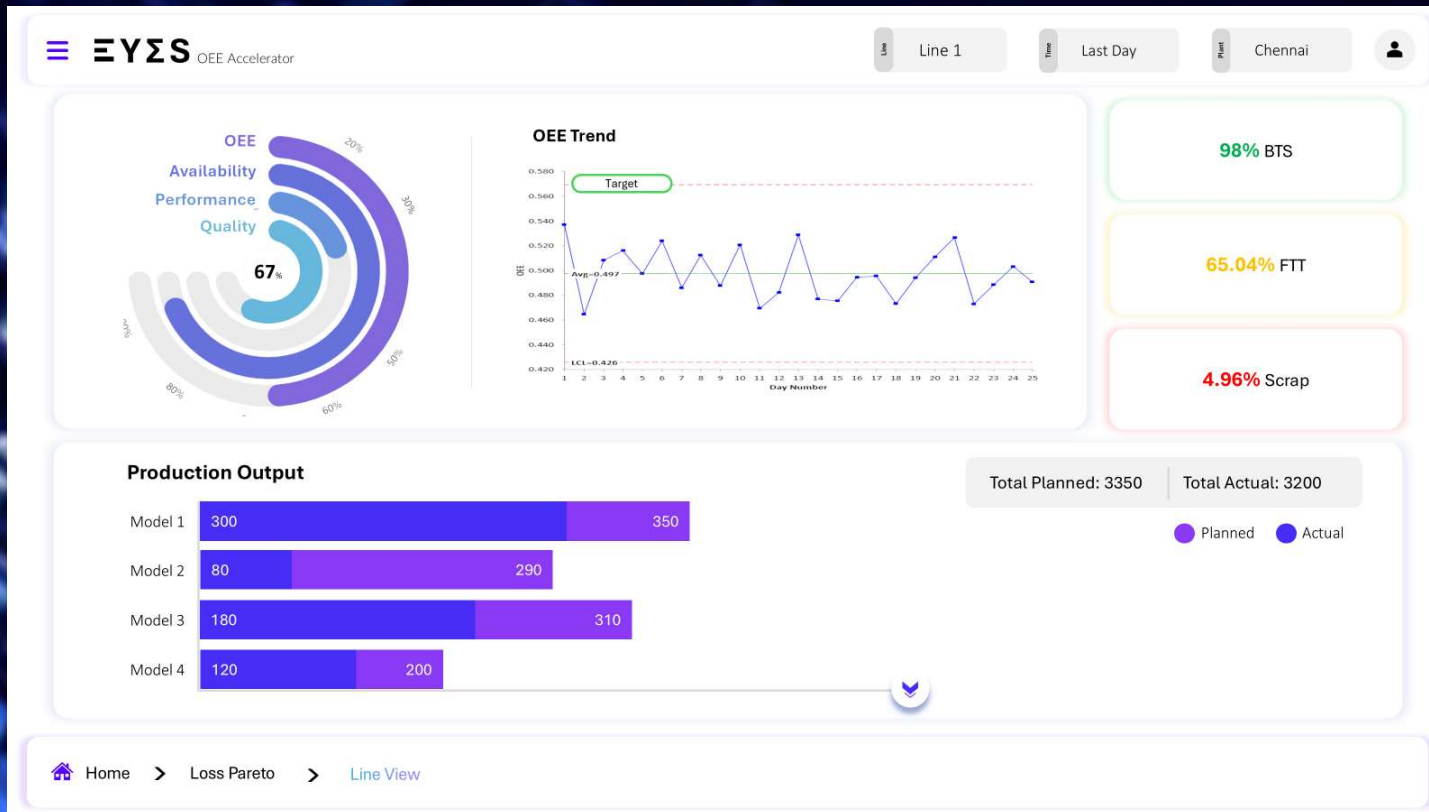
## Loss Pareto and State Time Chart



1. Loss time Top contributors
  - a. by Line
  - b. by Cause
2. State Time Chart

# Line Overview

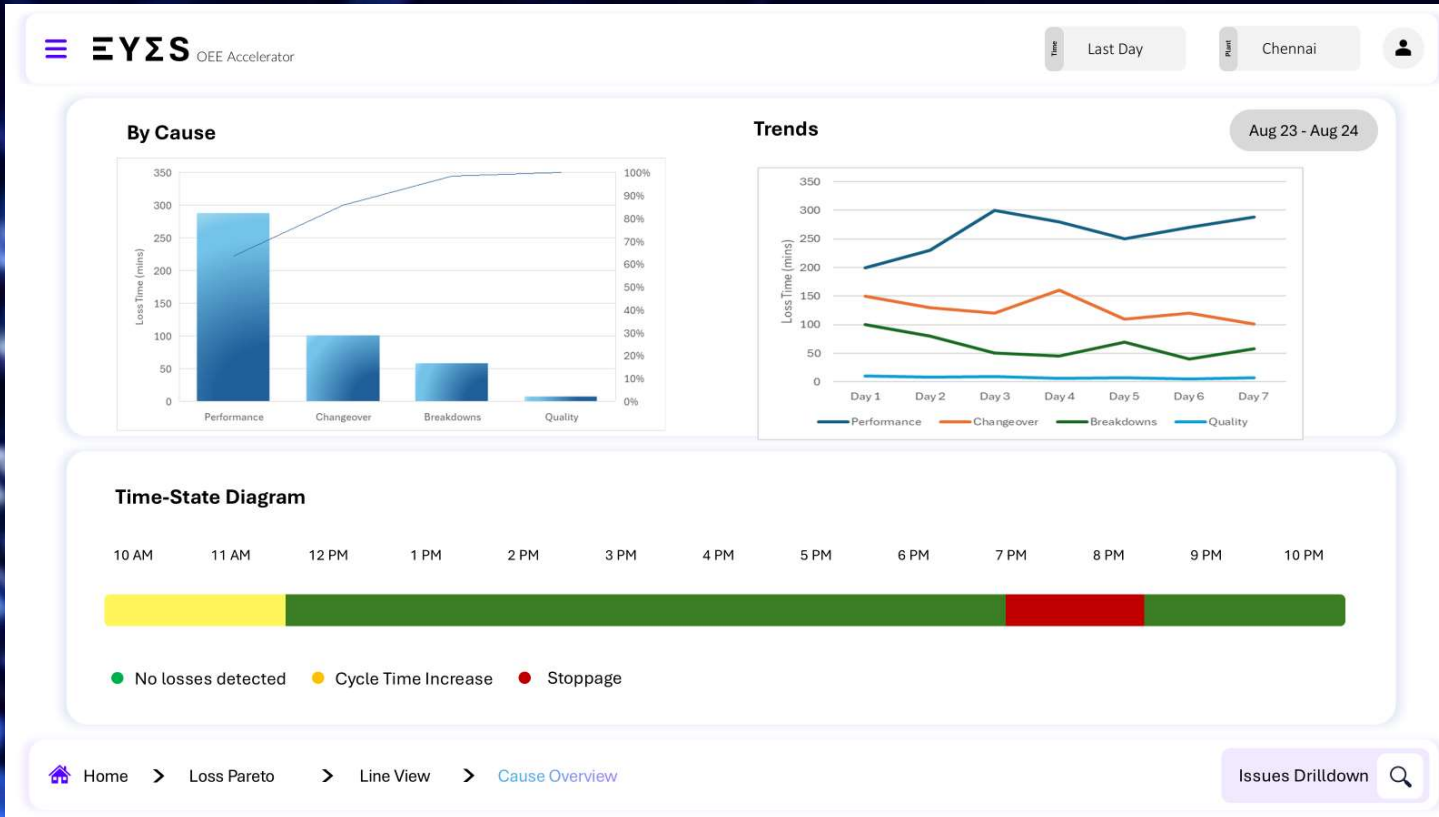
## KPIs and Production Status



1. KPIs and trends
2. Production Status by Model

# Line View

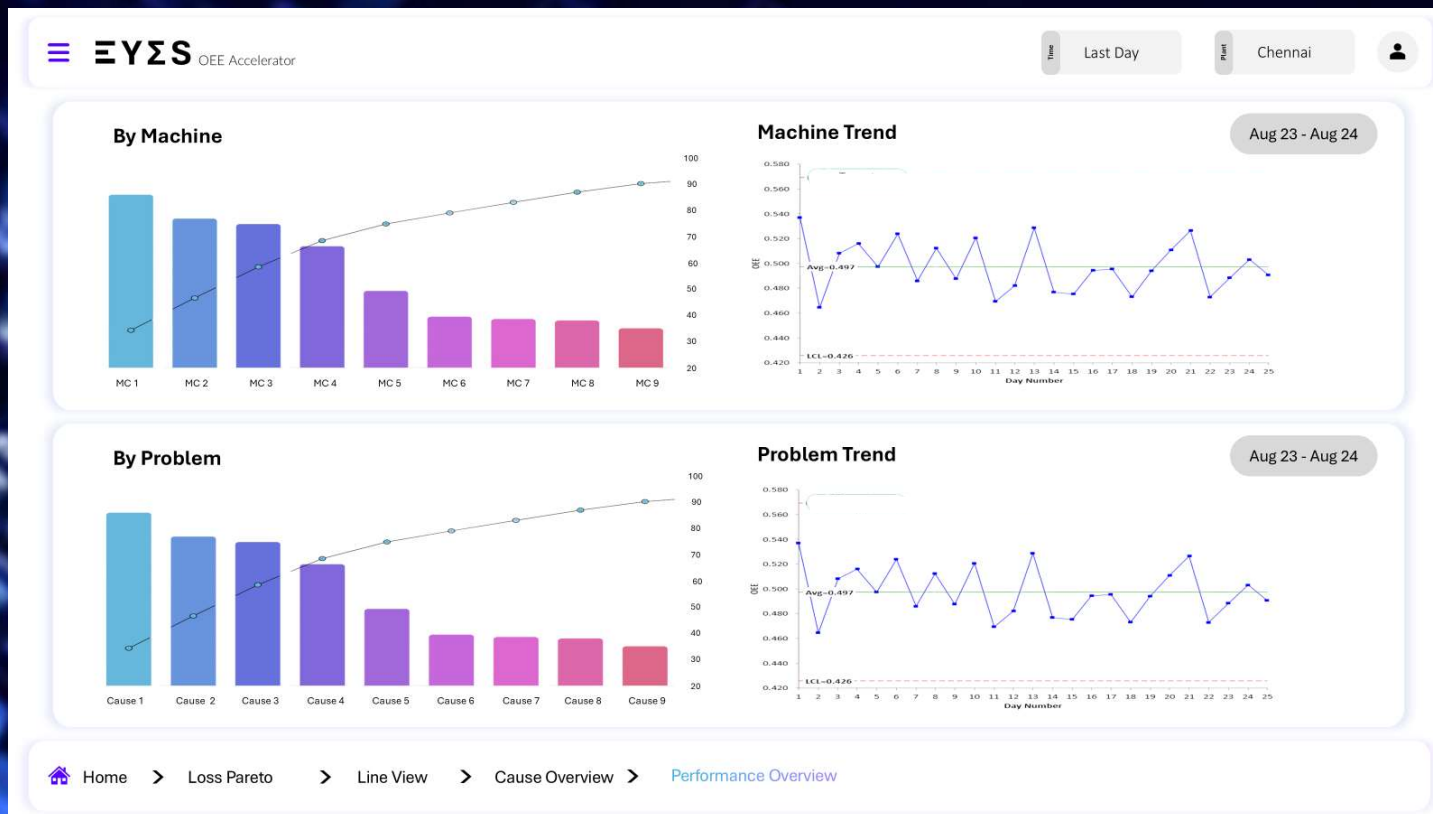
## Loss Pareto and Trends



1. Loss time Top contributors
2. Historical trends of each contributor
3. State Time Chart

# Line View

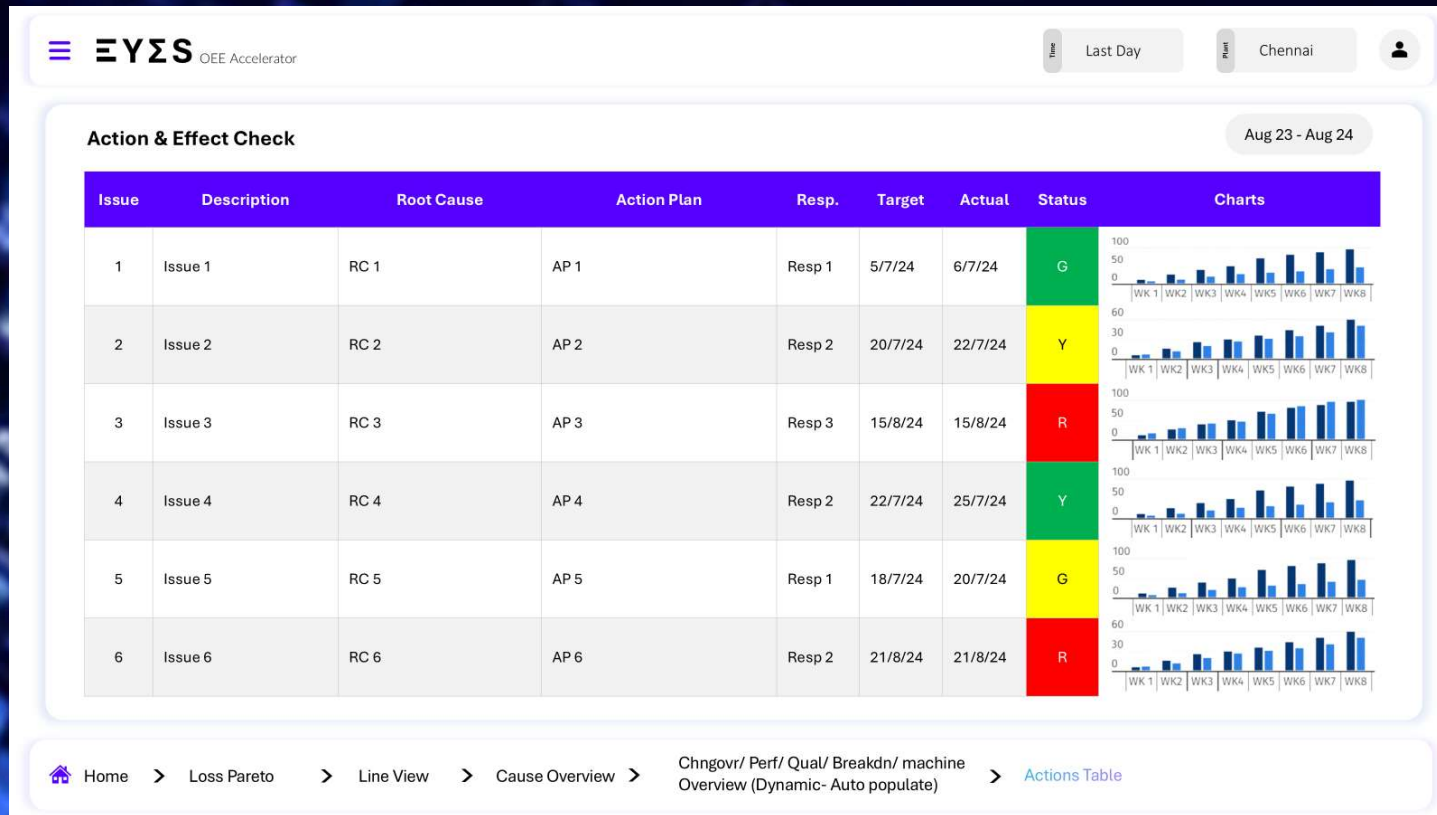
## Loss Analysis Drill Downs



1. Loss time Top contributors
  - a. By Machine
  - b. By Problem type
2. Historical trends of each contributor

# Improvement Actions Execution

## Actions and Effect Check



1. Digitized PDCA Framework
  - a. Action Tracking
  - b. Effect Check
2. AI based recommendation engine for
  - a. Root cause
  - b. Improvement actions

# Changeover Analytics

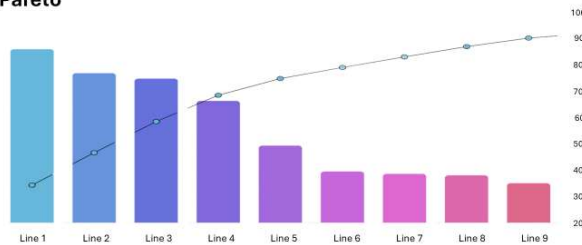
**EYES** OEE Accelerator

Last Day

Plant Chennai

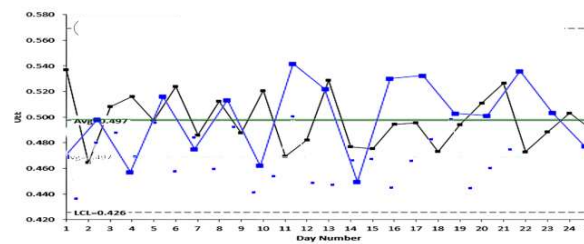


Pareto



Trend (Total time lost over time)

Aug 23 - Aug 24

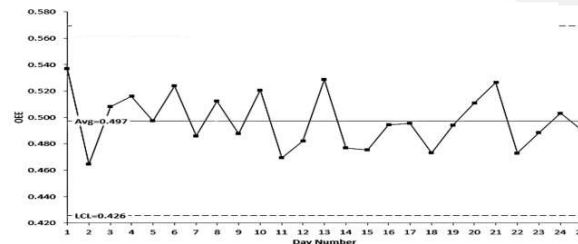


Number of Changeovers & Average Time/ Changeover

	Line 1	Line 2	Line 3	Line 4	Line 5	Line 6	Line 7
Number Planned	8	6	4	7	3	4	3
Number Actual	10	6	5	7	3	5	3
Type A	18	12	9	14	22	13	8
Type B	15	14	18	16	20	14	16

Trend of Element Chosen

Aug 23 - Aug 24



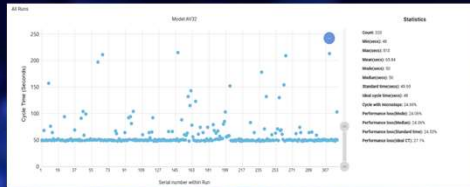
[Home](#) > [Loss Pareto](#) > [Line View](#) > [Cause Overview](#) > [Changeover Analysis](#)

View Actions

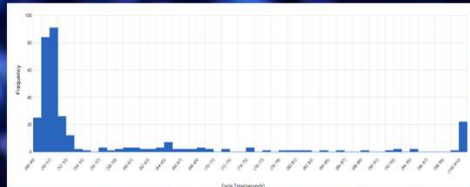


1. Top lines with high changeover losses
2. Trend of losses
  - a. by Line
  - b. by Changeover Type

# EYES can help you see the *'invisible'*



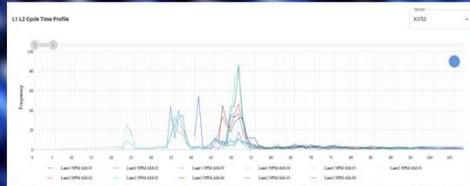
Scatter Plots  
helps you visualize Micro Stops



Histograms  
helps you analyze cycle time  
distributions



Cycle Time Statistics  
helps you determine  
Standard Time and check  
Performance Losses



Cycle Time Profiles  
helps you quickly understand  
line imbalance

**Fixing correct Standard Times is critical.  
The process of setting Standard Times  
needs to be robust and tamper-proof.**

**Better visibility of  
line imbalance can unearth  
up to 20% additional capacity**

The background of the slide is a dark blue field filled with a complex, glowing pattern of intersecting lines and dots, resembling a digital data stream or a microscopic view of a material. The lines are primarily horizontal and vertical, with some diagonal elements, creating a sense of depth and movement.

# EYES Focus and Value Proposition

# 11 MES Functions and EYES Focus

Dispatching  
Production  
Orders

Tracking and  
Traceability

Data Acquisition

Integration with  
Other Systems

Performance  
Analysis

Inventory  
Management

## Performance Improvement

EYES goes beyond Performance Analysis and provides powerful tools for Performance Improvement. EYES is focused on OEE Acceleration through reduction of **MicroStops** and **ChangeOvers**

Production  
Planning and  
Scheduling

Equipment  
Management

Document  
Management

Quality  
Management

Labor  
Management

# Our Team



## Swarna Banerjee

With experience spanning more than 30 years in world class multinational organizations, Swarna brings with him deep understanding of the manufacturing domain. It's best practices, challenges and opportunities.

He is passionate about productivity and has successfully led several operational transformation initiatives with impactful business results. Swarna has been an avid practitioner of Lean Manufacturing and believes that Smart Manufacturing is the next big opportunity for the industry.

Most recently Swarna was responsible for global manufacturing and supply chain operations for an automotive Tier 1's electronics division with annual revenue of € 1.4 billion. He has lived and worked in various locations in Asia including Tokyo and Shanghai.

He graduated in Mechanical Engineering from Indian Institute of Technology, Kharagpur, completed his post graduation in management from Indian Institute of Management, Bangalore and Smart Manufacturing from MIT.



## Suresh KV

35 years of experience in manufacturing in automotive, wind energy and consumer products industries.

Experience and expertise in formulating and implementing overall business strategy securing brand image, growth and elevated operational performance. Most recently KV held the position of President of India for a major global player in the automotive and industrial technology space and led a business with annual revenue of over € 1 billion.

KV strongly believes in a goal-oriented approach where entire organization has strategic clarity, driving innovation and growth and disciplined execution to deliver optimum results.

KV completed his B.Tech from NIT, Kozhikode and PGDM from SP Jain Institute of Management and Research, Mumbai.



## Andy Wood

26 years of experience in automotive OEM and Tier #1 electronics business, with Senior roles in Operations Strategy, Customer Group and Program Management

4 years of experience as Management and Operations consultant.

Expertise in strategic concept development and execution, with a history of delivering transformational programs to establish the right organizational structures to achieve high performance

MSc in Automotive Leadership and BEng in Electronic Engineering, Chartered Engineer with the UK Engineering Council and Fellow of the Institute Engineering and Technology

# Our Software Partner



ALUMNUS  
SOFTWARE LIMITED

Founded in 2000; Alumnus Software Ltd. offers SW development/ Product Engineering services in:

- Cloud-native Enterprise Application

- Embedded, Edge AI

- Cloud Connectivity/ Networking

- Consumer/Industrial IOT

200+ team of engineers

Alumnus Subsidiary InxiteOut specializes in business analytics software development

Customers are market-leaders and disruptive startups based in the USA, Europe, and Japan.

META SMART

WHERE INSIGHT MEETS INGENUITY

# Coordinates



## **Registered Office**

15D, Tower 1, Rosedale Garden Complex, Action Area 3, New Town  
Kolkata 700160, West Bengal, India

## **Website**

<https://metasmart.tech>

## **Email**

[metasmart@metasmart.tech](mailto:metasmart@metasmart.tech)

## **Phone**

+91-93848 02244 (Swarna Banerjee)

+91- 93611 22311 (Suresh KV)



Thank You