

Design • Assembly • Automation • Innovation

Founded in 2019, Metalgear Engineering exists to provide customers and companies with top-notch engineering solutions.

We take pride in our commitment to quality by using only the best materials and manufacturers for our customers whilst providing them with cost effective solutions.

With extensive experience in the pharmaceutical, medical, industrial, dairy, food, and chemical industries, Metalgear is up to the task to provide the best solutions ensuring the customer is one step ahead of the competition.

Proud to have been a part of the fight against COVID automating OEMs in producing ventilation equipment.



"If there is a will, there is a way!"

Konstantinos Nikolopoulos

President / Principle Engineer

knikolopoulos@metalgear-usa.com

201.621.3210

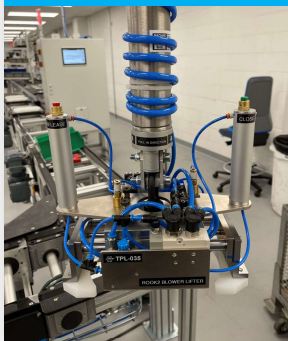
www.metalgear-usa.com

Innovative Tailored Solutions

- Testing Systems
- Factory Design
- ESD controls
- Pick and place
- Workstations
- Process Integrations
- ROI & tack time improvement.



Custom lifting



- Robotics
- Automated CNC Tending Machines
- Tooling & Fixtures
- Bearing Presses
- Facility design
- Automation
- PLC & SCADA
- Control Cabinets

Wire Assembly



One piece flow line



SIEMENS
Schleuniger

PHOENIX CONTACT
FESTO

SMC
rexroth
A Bosch Company

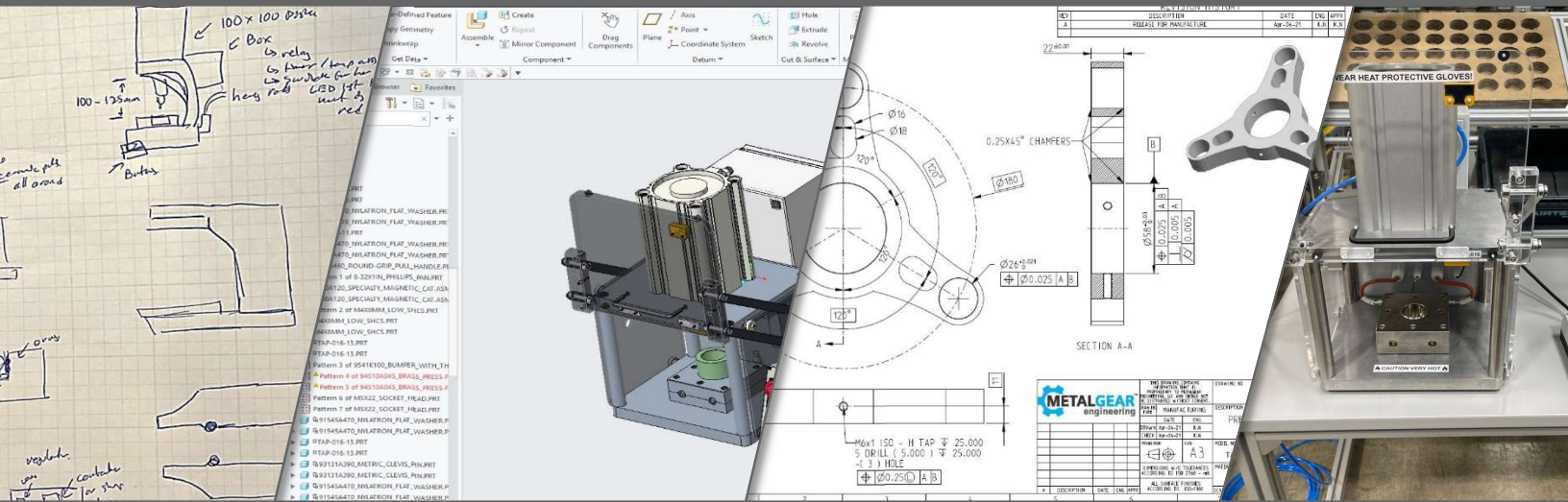
MODULA
bimos

Nordson EFD
BMP

ifm

RITTAL

In- house engineering from start to finish



Wiring & Controls



High Speed Doors



Autonomous Leak Testing



Conveyer Tracks Systems



CASE STUDY Airtech Group, Inc. / IDEX Group Customer was working with a legacy product of complex parts which had no features for scalable assembly.

We redesigned their assembly line and improved their process to bring their output from 10 units/day to 100 units/day - a 1000% increase in production whilst dropping labor costs to 40%!

With the implementation of single piece flow technology, customized PLC and automated systems, custom work cells, and appropriate tool selection, our customer was able to effectively manage their rising demands, while maintaining a competitive edge in the market. This approach also resulted in an enhanced level of quality and consistency, as tasks became more controlled, and technicians experienced reduced strain on their operations.

