



Ai Ye (Folium Artemisiae Argyi)



Ba Dou (Fructus Crotonis)



Ba Ji Tian (Radix Morindae Officinalis)



Ba Yue Zha (Fructus Akebiae)



Bai Bu (Radix Stemonae)



Bai Dou Kou (Fructus Amomi Rotundus)



Bai Fu Zi (Rhizoma Typhonii)



Bai Guo (Semen Ginkgo)



Bai He (Bulbus Lilii)



Bai Hua She (Bungarus Parvus)



Bai Hua She She Cao (Herba Oldenlandia)



Bai Ji (Rhizoma Bletillae)



Bai Ji Li (Fructus Tribuli)



Bai Jiang Cao (Herba cum Radice Patriniae)



Bai Jie Zi (Semen Sinapis)

Herb Identification Guide



Bai Lian (Radix Ampelopsis)



Bai Long Chuan Hua Tou
(Radix Clerodendron Paniculatum)



Bai Mao Gen (Rhizoma Imperatae)



Bai Mao Hua (Flos Imperatae)



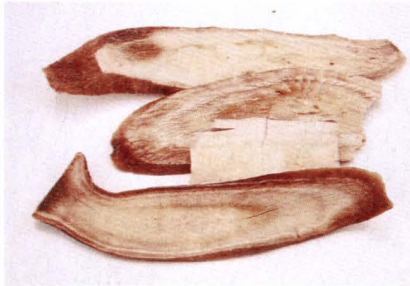
Bai Mu Er (Fructificatio Tremellae Fuciformis)



Bai Mu Tong (Caulis Akebia Trifoliata Australis)



Bai Qian (Rhizoma Cynanchi Stauntonii)



Bai Shao (Radix Paeoniae Alba)



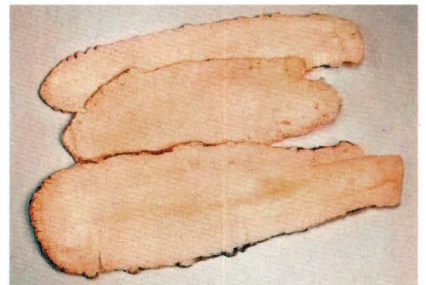
Bai Tou Weng (Radix Pulsatillae)



Bai Wei (Radix Cynanchi Atrati)



Bai Xian Pi (Cortex Dictamni)



Bai Zhi (Radix Angelicae Dahuricae)



Bai Zhu (Rhizoma Atractylodis Macrocephalae)



Bai Zi Ren (Semen Platycladi)



Ban Bian Lian (Herba Lobeliae Chinensis)



Ban Lan Gen (Radix Isatidis)



Ban Mao (Mylabris)



Ban Xia (Rhizoma Pinelliae)



Ban Zhi Lian (Herba Scutellariae Barbatae)



Bei Chai Hu (Radix Bupleurum Chinensis)



Bei Dou Gen (Rhizoma Menispermii)



Bei Sha Shen (Radix Glehniae)



Bei Wu Jia Pi
(Cortex Periploca Sepium Radicis)



Bi Ba (Fructus Piperis Longi)



Bi Cheng Qie (Fructus Litseae)



Bi Xie (Rhizoma Dioscoreae Hypoglaucae)



Bi Zi Cao (Herba Pogonatheri Criniti)



Bian Dou (Semen Lablab Album)



Bian Dou Hua (Flos Lablab Album)



Bian Dou Yi (Pericarpium Lablab Album)

Herb Identification Guide



Bian Xu (Herba Polygoni Avicularis)



Bie Jia (Carapax Trionycis)



Bing Lang (Semen Arecae)



Bing Pian (Borneolum Syntheticum)



Bo He (Herba Menthae)



Bu Gu Zhi (Fructus Psoraleae)



Can Sha (Excrementum Bombycis Mori)



Cang Er Gen (Radix Xanthii)



Cang Er Zi (Fructus Xanthii)



Cang Zhu (Rhizoma Atractylodis)



Cao Dou Kou (Semen Alpiniae Katsumadai)



Cao Guo (Fructus Tsaoko)



Cao Wu (Radix Aconiti Kusnezoffii)



Ce Bai Ye (Cacumen Platycladi)



Chai Hu (Radix Bupleuri)



Chan Tui (Periostracum Cicadae)



Chang Shan (Radix Dichroae)



Che Qian Cao (Herba Plantaginis)



Che Qian Zi (Semen Plantaginis)



Chen Pi (Pericarpium Citri Reticulatae)



Chen Xiang (Lignum Aquilariae Resinatum)



Chi Fu Ling (Poria Rubra)



Chi Shao (Radix Paeoniae Rubrae)



Chi Shi Zhi (Halloysitum Rubrum)



Chi Xiao Dou (Semen Phaseoli)



Chong Wei Zi (Semen Leonuri)



Chou Wu Tong
(Folium Clerodendri Trichotomi)



Chu Shi Zi (Fructus Broussonetiae)



Chuan Bei Mu (Bulbus Fritillariae Cirrhosae)



Chuan Lian Zi (Fructus Toosendan)

Herb Identification Guide



Chuan Mu Tong (Caulis Clematidis Armandii)



Chuan Niu Xi (Radix Cyathulae)



Chuan Shan Jia (Squama Manis)



Chuan Shan Long
(Rhizoma Dioscoreae Nipponicae)



Chuan Wu (Radix Aconiti Preparata)



Chuan Xin Lian (Herba Andrographis)



Chuan Xiong (Rhizoma Ligustici Chuanxiong)



Chui Pen Cao (Herba Sedi)



Chun Gen (Radix Ailanthi)



Chun Gen Pi (Cortex Ailanthi)



Ci Shi (Magnetitum)



Ci Wu Jia
(Radix et Caulis Acanthopanax Senticosi)



Cong Bai (Bulbus Allii Fistulosi)



Da Ding Huang (Caulis Euonymi)



Da Dou Huang Juan
(Semen Glycines Germinatum)



Da Feng Zi (Semen Hydnocarpil)



Da Fu Pi (Pericarpium Arecae)



Da Huang (Radix et Rhizoma Rhei)



Da Hui Xiang (Fructus Anisi Stellati)



Da Ji (Herba seu Radix Cirsii Japonici)



Da Ji (Radix Euphorbiae seu Knoxiae)



Da Ji Gen (Radix Cirsii Japonici)



Da Qing Ye (Folium Isatidis)



Da Suan (Bulbus Allii Sativi)



Da Zao (Fructus Jujubae)



Dai Zhe Shi (Haematitum)



Dan Dou Chi (Semen Sojae Praeparatum)



Dan Nan Xing (Arisaema cum Bile)



Dan Shen (Radix Salviae Miltiorrhizae)



Dan Zhu Ye (Herba Lophatheri)

Herb Identification Guide



Dang Gui Shen
(Corpus Radicis Angelicae Sinensis)



Dang Gui Tou
(Caput Radicis Angelicae Sinensis)



Dang Gui Wei
(Extremitas Radicis Angelicae Sinensis)



Dang Shen (Radix Codonopsis)



Dao Diao Jin Zhong
(Melothria Maderaspatana)



Deng Xin Cao (Medulla Junci)



Di Bie Chong (Eupolyphaga)



Di Fu Zi (Fructus Kochiae)



Di Gu Pi (Cortex Lycii)



Di Long (Pheretima)



Di Yu (Radix Sanguisorbae)



Ding Shu Xiu (Herba Elephantopus Scaber)



Ding Xiang (Flos Caryophylli)



Dong Chong Xia Cao (Cordyceps)



Dong Gua Pi (Exocarpium Benincasae)



Dong Gua Zi (Semen Benincasae)



Dong Kui Zi (Semen Malvae)



Dong Yang Shen (Radix Ginseng Japonica)



Du Huo (Radix Angelicae Pubescentis)



Du Zhong (Cortex Eucommiae)



Du Zhong Ye (Folium Eucommiae)



Duan Shi Gao (Gypsum Fibrosum Preparata)



E Bu Shi Cao (Herba Centipedae)



E Jiao (Colla Corii Asini)



E Zhu (Rhizoma Curcumae)



Er Cha (Catechu)



Fan Xie Ye (Folium Sennae)



Fang Feng (Radix Saposhnikoviae)



Fei Zi (Semen Torreya)



Fen Fang Ji (Radix Stephaniae Tetrandrae)

Herb Identification Guide



Feng Mi (Mel)



Feng Wei Cao (Herba Pteris)



Fo Shou (Fructus Citri Sarcodactylis)



Fo Shou Hua (Flos Citri Sarcodactylis)



Fu Hai Shi (Pumice)



Fu Ling (Poria)



Fu Ling Pi (Cortex Poria)



Fu Long Gan (Terra Flava Usta)



Fu Pen Zi (Fructus Rubi)



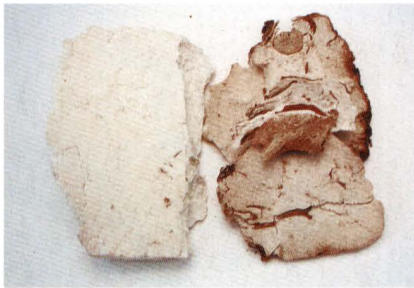
Fu Ping (Herba Spirodela)



Fu Rong (Radix Hibisci)



Fu Rong Ye (Folium Hibisci)



Fu Shen (Poria Paradicis)



Fu Xiao Mai (Semen Triticis Aestivi Levis)



Fu Zi (Radix Aconiti Lateralis Praeparata)



Gan Cao (Radix Glycyrrhizae)



Gan Jiang (Rhizoma Zingiberis)



Gan Qi (Resina Toxicodendri)



Gan Song (Radix seu Rhizoma Nardostachys)



Gan Sui (Radix Euphorbiae Kansui)



Gao Ben (Rhizoma Ligustici)



Gao Liang Jiang
(Rhizoma Alpiniae Officinarum)



Ge Gen (Radix Puerariae)



Ge Hua (Flos Puerariae)



Ge Jie (Gecko)



Geng Mi (Semen Oryzae)



Geng Tong Cao
(Ramulus Aeschynomene Indica)



Gou Ji (Rhizoma Cibotii)



Gou Qi Gen (Radix Lycii)



Gou Qi Zi (Fructus Lycii)

Herb Identification Guide



Gou Teng (Ramulus Uncariae cum Uncis)



Gu Jing Cao (Flos Eriocauli)



Gu Sui Bu (Rhizoma Drynariae)



Gu Ya (Fructus Setariae Germinatus)



Gu Zhi Hua (Semen Oroxyli)



Gua Lou Pi (Pericarpium Trichosanthis)



Gua Lou Ren (Semen Trichosanthis)



Gua Lou Shi (Fructus Trichosanthis)



Guan Bai Fu (Rhizoma Aconitum Coreanum)



Guan Mu Tong
(Caulis Aristolochiae Manshuriensis)



Guan Zhong (Rhizoma Dryopteridis)



Guang Fang Ji (Radix Aristolochiae Fangchi)



Guang Huo Xiang (Herba Pogostemonis)



Guang Jin Qian Cao
(Herba Desmodii Styracifolii)



Gui Ban (Plastrum Testudinis)



Gui Ban Jiao (Gelatinum Plastrum Testudinis)



Gui Xin (Cortex Rasmus Cinnamomi)



Gui Zhi (Ramulus Cinnamomi)



Hai Dai (Thallus Laminariae)



Hai Feng Teng (Caulis Piperis Kadsurae)



Hai Ge Fen (Concha Meretricis seu Cyclinae)



Hai Jin Sha (Herba Lygodii)



Hai Long (Syngnathus)



Hai Ma (Hippocampus)



Hai Piao Xiao (Endoconcha Sepiae)



Hai Shen (Strichopus Japonicus)



Hai Tong Pi (Cortex Erythrinae)



Hai Zao (Sargassum)



Han Lian Cao (Herba Ecliptae)



Han Shui Shi (Mirabilite)

Herb Identification Guide



He Geng (Caulis Nelumbinis)



He Huan Hua (Flos Albiziae)



He Huan Pi (Cortex Albiziae)



He Shi (Fructus Carpesii)



He Shou Wu (Radix Polygoni Multiflori)



He Ye (Folium Nelumbinis)



He Zi (Fructus Chebulae)



Hei Dou (Semen Glycine Max)



Hei Zhi Ma (Semen Sesami Nigrum)



Hong Da Ji (Radix Knoxiae)



Hong Gu She (Radix Kadsura Japonicae)



Hong Han Lian (Herba Hypericum Ascyron)



Hong Hua (Flos Carthami)



Hong Qu (Monascus)



Hong Shi Gao (Gypsum Rubrae)



Hong Teng (Caulis Sargentodoxae)



Hou Po (Cortex Magnoliae Officinalis)



Hou Po Hua (Flos Magnoliae Officinalis)



Hu Huang Lian (Rhizoma Picrorhizae)



Hu Jiao (Fructus Piper)



Hu Lu Ba (Semen Trigonellae)



Hu Po (Succinum)



Hu Tao Ren (Semen Juglandis)



Hu Yao Huang (Herba Leucas Mollissimae)



Hu Zhang (Rhizoma Polygoni Cuspidati)



Hua Jiao (Pericarpium Zanthoxyli)



Hua Ju Hong (Exocarpium Citri Grandis)



Hua Rui Shi (Opicalcium)



Hua Shi (Talcum)



Hua Shi Cao (Herba Orthosiphon Aristatus)

Herb Identification Guide



Huai Hua (Flos Sophorae)



Huai Jiao (Fructus Sophorae)



Huai Niu Xi (Radix Achyranthis Bidentatae)



Huai Tong Ma Dou Ling
(Caulis Aristolochiae Moupinensis)



Huang Bai (Cortex Phellodendri)



Huang Jin Gui (Caulis Vanieriae)



Huang Jing (Rhizoma Polygonati)



Huang Lian (Rhizoma Coptidis)



Huang Qi (Radix Astragali)



Huang Qin (Radix Scutellariae)



Huang Shui Qie (Herba Solani)



Huang Teng (Caulis Fibraurea)



Huang Yao Zi (Herba Dioscoreae Bulbiferae)



Huo Ma Ren (Fructus Cannabis)



Huo Xiang (Herba Agastache)



Ji Gu Cao (Herba Abri)



Ji Guan Hua (Flos Celosiae Cristatae)



Ji Nei Jin (Endothelium Corneum Gigeriae Galli)



Ji Xiang Teng (Caulis Paederiae)



Ji Xue Cao (Herba Centellae)



Ji Xue Teng (Caulis Spatholobi)



Jian Shen Qu (Massa Fermentata Praeparata)



Jiang Can (Bombyx Batryticatus)



Jiang Huang (Rhizoma Curcumae Longae)



Jiang Xiang (Lignum Dalbergiae Odoriferae)



Jiao Gu Lan
(Rhizoma seu Herba Gynostemmatis)



Jiao Mu (Semen Zanthoxyli Bungeani)



Jie Geng (Radix Platycodonis)



Jin Fei Cao (Herba Inulae)



Jin Guo Lan (Radix Tinosporae)

Herb Identification Guide



Jin Qian Cao (Herba Lysimachiae)



Jin Yin Hua (Flos Lonicerae)



Jin Ying Zi (Fructus Rosae Laevigatae)



Jing Jie (Herba Schizonepetae)



Jing Sui (Flos Schizonepetae)



Jiu Cai Zi (Semen Allii Tuberosi)



Jiu Ceng Ta (Herba Ocimi Basilici)



Jiu Jie Chang Pu
(Rhizoma Anemones Altaicae)



Ju He (Semen Citri Rubrum)



Ju Hong (Exocarpium Citri Rubrum)



Ju Hua (Flos Chrysanthemi)



Ju Luo (Fibra Citri Rubrum)



Ju Ye (Folium Citri Rubrum)



Jue Ming Zi (Semen Cassiae)



Ku Lian Pi (Cortex Meliae)



Ku Lian Zi (Fructus Meliae)



Ku Shen Gen (Radix Sophorae Flavescens)



Kuan Dong Hua (Flos Farfarae)



Kun Bu (Thallus Laminariae seu Eckloniae)



Lai Fu Zi (Semen Raphani)



Lao Guan Cao (Herba Erodii seu Geranii)



Lei Gong Teng (Radix Tripterygii Wilfordii)



Lei Wan (Omphalia)



Li Lu (Radix et Rhizoma Veratri)



Li Zhi He (Semen Litchi)



Lian Fang (Receptaculum Nelumbinis)



Lian Qiao (Fructus Forsythiae)



Lian Xu (Stamen Nelumbinis)



Lian Zi (Semen Nelumbinis)



Lian Zi Xin (Plumula Nelumbinis)

Herb Identification Guide



Ling Yang Jiao (Cornu Saigae Tataricae)



Ling Yin Chen (Herba Siphonostegia Chinensis)



Ling Zhi (Ganoderma)



Liu Huang (Sulfur)



Liu Ji Nu (Herba Artemisiae Anomalae)



Liu Zhi Huang (Herba Solidaginis)



Long Chi (Dens Draconis)



Long Dan Cao (Radix Gentianae)



Long Gu (Os Draconis)



Long Kui (Herba Solanum Nigrum)



Long Yan Hua (Flos Longan)



Long Yan Rou (Arillus Longan)



Lou Lu (Radix Rhapontici)



Lu Cha (Folium Camellia Sinensis)



Lu Dou (Semen Phaseoli Radiati)



Lu Dou Yi (Pericarpium Phaseoli Radiati)



Lu Feng Fang (Nidus Vespae)



Lu Gan Shi (Galamina)



Lu Gen (Rhizoma Phragmitis)



Lu Han Cao (Herba Pyrolae)



Lu Hui (Aloe)



Lu Jiao (Cornu Cervi)



Lu Jiao Jiao (Gelatinum Cornu Cervi)



Lu Jiao Shuang (Cornu Cervi Degelatinatum)



Lu Lu Tong (Fructus Liquidambaris)



Lu Rong (Cornu Cervi Pantotrichum)



Luo Han Guo (Fructus Momordicae)



Luo Shi Teng (Caulis Trachelospermi)



Ma An Teng (Herba Ipomoea Pes-caprae)



Ma Bian Cao (Herba Verbenae)

Herb Identification Guide



Ma Bo (Lasiosphaera seu Calvatia)



Ma Chi Xian (Herba Portulacae)



Ma Dou Ling (Fructus Aristolochiae)



Ma Huang (Herba Ephedrae)



Ma Huang Gen (Radix Ephedrae)



Ma Qian Zi (Semen Strychni)



Ma Ti Jin (Herba Dichondrae Repentis)



Mai Men Dong (Radix Ophiopogonis)



Mai Ya (Fructus Hordei Germinatus)



Man Jing Zi (Fructus Vitis)



Mang Xiao (Natrii Sulfas)



Mao Dong Qing (Radix Ilicis Pubescentis)



Mao Zi Dun Tou (Herba Abutilon Indicum)



Meng Chong (Tabanus)



Meng Shi (Lapis Micae seu Chloriti)



Mi Meng Hua (Flos Buddlejae)



Mi Tuo Seng (Lithargyrum)



Ming Fan (Alumen)



Mo Gu Xiao (Caulis Hyptis Capitatae)



Mo Yao (Myrrha)



Mu Bie Zi (Semen Momordicae)



Mu Dan Pi (Cortex Moutan)



Mu Fang Ji (Radix Couulus Trilobus)



Mu Gua (Fructus Chaenomelis)



Mu Li (Concha Ostreae)



Mu Xiang (Radix Aucklandiae)



Mu Zei (Herba Equiseti Hiemalis)



Nan Sha Shen (Radix Adenophorae)



Niu Bang Zi (Fructus Arctii)



Nu Zhen Zi (Fructus Ligustri Lucidi)

Herb Identification Guide



Ou Jie (Nodus Nelumbinis Rhizomatis)



Pang Da Hai
(Semen Sterculiae Lychnophorae)



Pao Jiang (Rhizoma Zingiberis Preparatum)



Pao Zai Cao (Herba Physalis Angulatae)



Pei Lan (Herba Eupatorii)



Peng Sha (Borax)



Pi Pa Ye (Folium Eriobotryae)



Po Bu Zi Ye (Folium Cordia Dichotoma)



Po Xiao (Sal Glauberis)



Pu Gong Ying (Herba Taraxaci)



Pu Huang (Pollen Typhae)



Qi Ye Lian (Radix Schefflerae)



Qian Cao (Radix Rubiae)



Qian Hu (Radix Peucedani)



Qian Li Guang (Herba Senecionis Scandens)



Qian Nian Jian (Rhizoma Homalomenae)



Qian Niu Zi (Semen Pharbitidis)



Qian Shi (Semen Euryales)



Qiang Huo (Rhizoma et Radix Notopterygii)



Qin Jiao (Radix Gentianae Macrophyllae)



Qin Pi (Cortex Fraxini)



Qing Dai (Indigo Naturalis)



Qing Feng Teng (Caulis Sinomenii)



Qing Hao (Herba Artemisiae Annuae)



Qing Mu Xiang (Radix Aristolochiae)



Qing Pi (Pericarpium Citri Reticulatae Viride)



Qing Xiang Zi (Semen Celosiae)



Qu Mai (Herba Dianthi)



Quan Xie (Scorpio)



Ren Dong Teng (Caulis Lonicerae)

Herb Identification Guide



Ren Shen (Radix Ginseng)



Ren Shen Ye (Folium Ginseng)



Ren Zhong Bai (Urinae Hominis Sedimen)



Rou Cong Rong (Herba Cistanches)



Rou Dou Gen (Radix Myristicae)



Rou Dou Kou (Semen Myristicae)



Rou Gui (Cortex Cinnamomi)



Ru Xiang (Gummi Olibanum)



Rui Ren (Semen Prinsepiae)



San Leng (Rhizoma Sparganii)



San Qi (Radix Notoginseng)



San Qi Ye (Folium Notoginseng)



Sang Bai Pi (Cortex Mori)



Sang Ji Sheng (Herba Taxilli)



Sang Piao Xiao (Ootheca Mantidis)



Sang Shen Zi (Fructus Mori)



Sang Ye (Folium Mori)



Sang Zhi (Ramulus Mori)



Sha Ren (Fructus Amomi)



Sha Yuan Zi (Semen Astragali Complanati)



Shan Ci Gu (Pseudobulbus Cremastrae)



Shan Dou Gen (Radix Sophorae Tonkinensis)



Shan Pu Tao (Radix Vitis Amurensis)



Shan Yao (Rhizoma Dioscoreae)



Shan Zha (Fructus Crataegi)



Shan Zhu Yu (Fructus Corni)



Shang Lu (Radix Phytolaccae)



She Chuang Zi (Fructus Cnidii)



She Gan (Rhizoma Belamcandae)



She Tui (Periostracum Serpentis)

Herb Identification Guide



Shen Jin Cao (Herba Lycopodii)



Shen Qu (Massa Fermentata)



Sheng Di Huang (Radix Rehmanniae)



Sheng Jiang (Rhizoma Zingiberis Recens)



Sheng Jiang Pi
(Pericarpium Zingiberis Recens)



Sheng Ma (Rhizoma Cimicifugae)



Shi Chang Pu (Rhizoma Acori)



Shi Di (Calyx Kaki)



Shi Gao (Gypsum Fibrosum)



Shi Hu (Herba Dendrobii)



Shi Jue Ming (Concha Haliotidis)



Shi Jun Zi (Fructus Quisqualis)



Shi Lian Zi (Herba Sinocrassulae Indicae)



Shi Liu Pi (Pericarpium Granati)



Shi Nan Teng (Ramulus Piper)



Shi Wei (Folium Pyrosiae)



Shu Di Huang (Radix Rehmanniae Preparata)



Shui Niu Jiao (Cornu Bubali)



Shui Zhi (Hirudo)



Si Chuan Da Jin Qian Cao
(Herba Lysimachia Christinae)



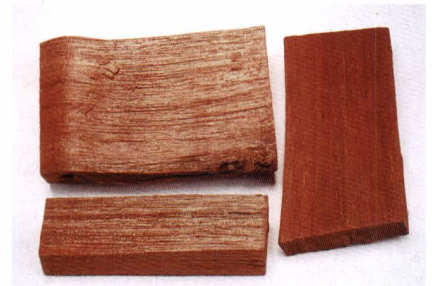
Si Gua Luo (Retinervus Luffae Fructus)



Song Jie (Lignum Pini Nodi)



Su Geng (Caulis Perillae)



Su Mu (Lignum Sappan)



Su Zi (Fructus Perillae)



Suan Zao Ren (Semen Zizyphi Spinosae)



Suo Yang (Herba Cynomorii)



Tai Zi Shen (Radix Pseudostellariae)



Tan Xiang (Lignum Santali Albi)



Tao Ren (Semen Persicae)

Herb Identification Guide



Tian Hua Fen (Radix Trichosanthis)



Tian Kui Zi (Radix Semiaquilegiae)



Tian Ma (Rhizoma Gastrodiae)



Tian Men Dong (Radix Asparagi)



Tian Nan Xing (Rhizoma Arisaematis)



Tian Xian Teng (Herba Aristolochiae)



Tian Zhu Huang
(Concretio Silicea Bambusae)



Ting Li Zi (Semen Descurainiae seu Lepidii)



Tong Cao (Medulla Tetrapanacis)



Tou Gu Cao (Caulis Impatiensis)



Tu Fu Ling (Rhizoma Smilacis Glabrae)



Tu Niu Xi (Radix Achyranthes Longifolia)



Tu Si Zi (Semen Cuscutae)



Wa Leng Zi (Concha Arcae)



Wan Dian Jin (Radix Illicis Asprellae)



Wan Nian Song (Herba Selaginellae)



Wang Bu Liu Xing (Semen Vaccariae)



Wei Ling Xian (Radix Clematidis)



Wu Bei Zi (Galla Chinensis)



Wu Gong (Scolopendra)



Wu Jia Pi (Cortex Acanthopanaxis)



Wu Ling Zhi
(Excrementum Trogopteri seu Pteromi)



Wu Long Cha
(Folium Camellia Sinensis Fermentata)



Wu Mei (Fructus Mume)



Wu Ming Yi (Pyrolusitum)



Wu Shao She (Zaocys)



Wu Teng (Ramulus Linderae Strychnifolia)



Wu Tou (Radix Aconiti)



Wu Wei Zi (Fructus Schisandrae Chinensis)

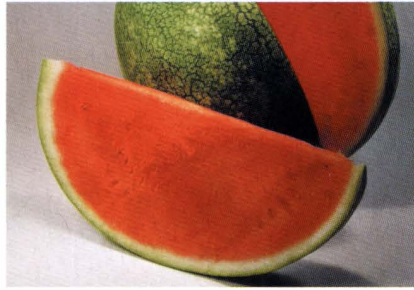


Wu Yao (Radix Linderae)

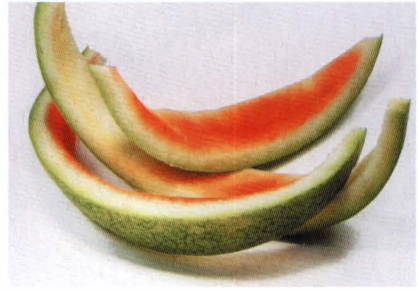
Herb Identification Guide



Wu Zhu Yu (Fructus Evodiae)



Xi Gua (Fructus Citrulli)



Xi Gua Pi (Pericarpium Citrulli)



Xi Xian Cao (Herba Siegesbeckiae)



Xi Xin (Herba Asari)



Xi Yang Shen (Radix Panacis Quinquefolii)



Xia Ku Cao (Spica Prunellae)



Xia Ku Hua (Flos Prunellae)



Xian Feng Cao (Herba Bidentis)



Xian He Cao (Herba Agrimoniae)



Xian Mao (Rhizoma Curculiginis)



Xiang Fu (Rhizoma Cyperi)



Xiang Ru (Herba Elsholtziae seu Moslae)



Xiang Si Cao (Herba Eupatorii Formosani)



Xiao Hui Xiang (Fructus Foeniculi)



Xiao Jin Ying (Fructus Rosae Cymosae)



Xiao Mai (Fructus Triticici)



Xie Bai (Bulbus Allii Macrostemonis)



Xie Cao (Radix et Rhizoma Valerianae)



Xin Yi Hua (Flos Magnoliae)



Xing Ren (Semen Armeniacae Amarum)



Xu Chang Qing (Radix Cynanchi Paniculati)



Xu Duan (Radix Dipsaci)



Xuan Fu Hua (Flos Inulae)



Xuan Shen (Radix Scrophulariae)



Xue Jie (Sanguis Draconis)



Xue Yu Tan (Crisis Carbonisatus)



Xun Gu Feng
(Herba Aristolochiae Mollissimae)



Ya Dan Zi (Fructus Bruceae)



Ya She Huang (Herba Lippiae)

Herb Identification Guide



Yan Hu Suo (Rhizoma Corydalis)



Yang Qi Shi (Actinolithum)



Ye Jiao Teng (Caulis Polygoni Multiflori)



Ye Ju Hua (Flos Chrysanthemi Indici)



Ye Ming Sha
(Excrementum Vesperilionis Murini)



Yi Mu Cao (Herba Leonuri)



Yi Tang (Saccharum Granorum)



Yi Tiao Gen (Radix Moghaniae)



Yi Wu Gen (Radix Eleagni)



Yi Yi Ren (Semen Coicis)



Yi Zhi Ren (Fructus Alpiniae Oxyphyllae)



Yi Zhi Xiang (Herba Vernoniae Cinereae)



Yin Chai Hu (Radix Stellariae)



Yin Chen Hao (Herba Artemisiae Scopariae)



Yin Guo Ye (Folium Ginkgo)



Yin Yang Huo (Herba Epimedii)



Yu Bai Fu (Rhizoma Typhonium Giganteum)



Yu Jin (Radix Curcumae)



Yu Li Ren (Semen Pruni)



Yu Mi Xu (Stigma Maydis)



Yu Xing Cao (Herba Houttoyniae)



Yu Yu Liang (Limonitum)



Yu Zhu (Rhizoma Polygonati Odorati)



Yuan Hua (Flos Genkwa)



Yuan Ming Fen (Matrii Sulfas Exsiccatus)



Yuan Zhi (Radix Polygalae)



Zao Jiao (Fructus Gleditsiae)



Zao Jiao Ci (Spina Gleditsiae)



Ze Lan (Herba Lycopi)



Ze Xie (Rhizoma Alismatis)

Herb Identification Guide



Zhang Hong Hua (*Flos Crocus Sativus*)



Zhang Nao (*Camphora*)



Zhe Bei Mu (*Bulbus Fritillariae Thunbergii*)



Zhen Zhu (*Margarita*)



Zhen Zhu Mu (*Concha Margaritaeferae*)



Zhi Gan Cao (*Radix Glycyrrhizae Preparata*)



Zhi Ju Zi (*Fructus Hoveniae*)



Zhi Ke (*Fructus Aurantii*)



Zhi Mu (*Radix Anemarrhenae*)



Zhi Shi (*Fructus Aurantii Immaturus*)



Zhi Zi (*Fructus Gardeniae*)



Zhi Zi Pi (*Pericarpium Gardeniae*)



Zhi Zi Ren (*Semen Gardeniae*)



Zhong Ru Shi (*Stalactitum*)



Zhu Fan Hua Tou (*Rhizoma Mirabilidis*)



Zhu Ling (Polyporus)



Zhu Ru (Caulis Bambusae in Taenia)



Zhu Sha (Cinnabaris)



Zhu Zi Cao (Herba Euphorbiae Thymifoliae)



Zi Bei Tian Kui (Herba Semiaquilegiae)



Zi Cao Gen (Radix Lithospermi)



Zi He Che (Placenta Hominis)



Zi Hua Di Ding (Herba Violae)



Zi Ran Tong (Pyritum)



Zi Su Ye (Folium Perillae)



Zi Wan (Radix Asteris)



Zong Lu Pi (Fibra Stipulae Trachycarpi)



Zou Ma Tai (Rhizoma Ardisiae)