

Polyguard®

Innovation based. Employee owned. Expect more.



Integrated Building Envelope®

Architectural Division

SMART DESIGN. SMART BUILD.

WATERPROOFING SYSTEMS

A comprehensive line of horizontal and vertical sheet waterproofing membranes, fluid-applied membranes and accessories.



Polyguard Waterproofing Systems

We construct buildings to shelter human activity. The very thought of a new building leaking is unfathomable. Unfortunately, water intrusion is a leading cause of building failure and ultimately, litigation in new construction today. In short, there is no good reason for a building to leak.

A Proven Industry Leader.....

Founded in 1953, Polyguard has a long history of specializing in products that are used in systems to protect structures from the environment, such as air, water and other undesired contaminants. Polyguard understands that we do not produce a finished product (the building). We need the partnership of architects and consultants to design our products into the building and the general contractors and installers, to apply our products as a system on the building. For the process to be a success, it requires quality communication between all parties. With over a half century in the industry, Polyguard has developed the products and expertise to facilitate this process through Design, Material and Installation.

2

Polyguard supports your project needs with our Integrated Building Envelope® System approach. Our products and systems are designed to work together producing unique

connection points intended to protect the structure from below-grade to the roof. We built this foundation with superior technical service, research and development, and manufacturing capabilities from our facilities in Ennis and Corsicana, Texas.

When your project needs the best in moisture protection, choose Polyguard. Our inside Technical Support Specialists are available with specification assistance and detail drawings. The products are readily assembled into a system that meets the project demands. In addition, our on site Technical Field Specialists are there with training and job site support. Polyguard will assist you every step along the way.

SMART DESIGN, SMART BUILD WITH POLYGUARD



WATERPROOFING SYSTEM PRODUCTS

Preventing below-grade water intrusion is critical for avoiding costly problems. Polyguard offers a comprehensive line of proven, high-performance waterproofing systems that provide a continuous barrier to water and are fully adhered to the structure.

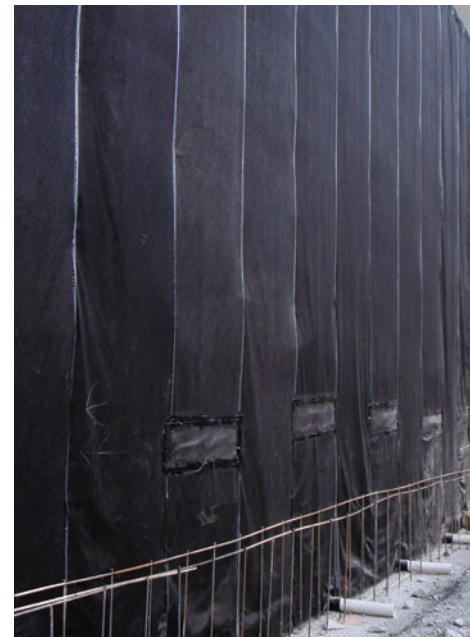
- **Underseal® Underslab Membrane**
- **Underseal® Blindsides™ Membrane**
- **Underseal® PRM™**
Horizontal Split Slab & HD Vertical Applications
- **Underseal® CRM™**
Pre-pour Chemical Resistant Waterproofing Membrane
- **Ultra CRM™**
Post-pour Chemical Resistant Waterproofing Membrane
- **650 Membrane**
Multi-purpose Peel and Stick Waterproofing Membrane
- **Commercial Stretch**
Fluid-Applied Waterproofing
- **PRO 1000**
Fluid-Applied Dampproofing
- **PRO 3101**
Specialty-use Fluid -Applied Waterproofing
- **Balconyguard™**
Balcony Waterproofing Membrane
- **Deckguard® HT**
Roofing and Watershield Underlayment
- **Tileguard™**
Anti-Fracture Underlayment Membrane
- **NW-75™**
Parking Structure, Anti-Fracture Membrane

Your Investment Deserves the Right Waterproofing Protection

For over 60 years, Polyguard has committed to research, innovation and development of superior products designed to protect structures from the various environments around the world. Our single-source waterproofing system solutions are designed to provide complete protection for the most demanding projects. From the design of the building, through the typography of the site, and to the location in the nation, every project is unique. Thus, the Design, Material, and Installation of a building envelope needs to match the specific demands of your project. Can your data center withstand the heavy winds and rain of tornado alley? Does your multi-purpose complex have the wherewithal to stop the humidity and high water table of the coast? Or will your hospital survive the contaminated vapors and water of a reclaimed brownfield site?

How does moisture intrusion happen in my building?

Moisture will be found in one form or another on every building site. Without proper protection from the ground up, moisture problems have a devastating, costly effect on your project. 90% of all environment intrusion occurs in the often overlooked and rarely owned areas of system connections: Terminations, Transitions and Penetrations. Today's construction process uses subcontractors that specialize in specific systems. So it makes sense, issues primarily occur where the systems meet. Our Integrated Building Envelope® System combines products that are designed to work together to provide complete protection of the structure.



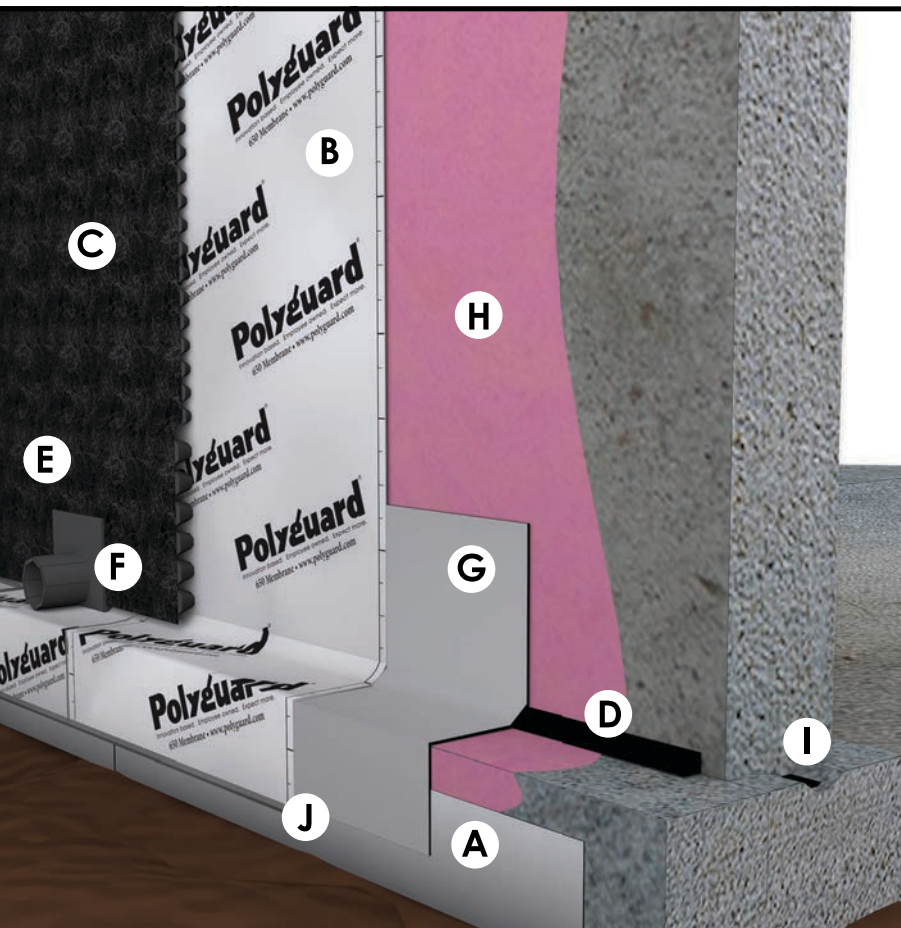
Underseal® Blindsided Membrane being installed over a timber lagging soil retention system utilizing Polyflow® 15 and Totalflow™.



The Solution: The Integrated Building Envelope® System

Understanding how the various building envelope systems function individually is critical to having them work together as a whole for the entire building. Polyguard manufactures a comprehensive and complete line of waterproofing and air / moisture control products that are compatible and complimentary. By utilizing the solutions offered within our Integrated Building Envelope System®, you have the

confidence of a complete system from a single source manufacturer that will provide superior control of air and moisture for your building project.

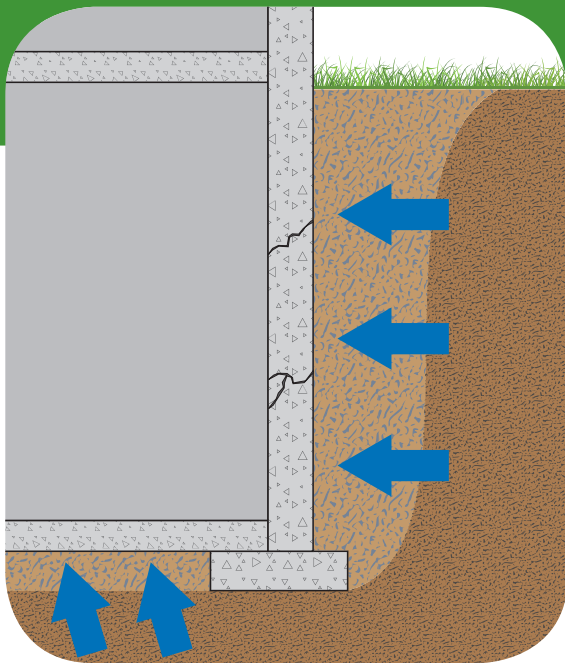
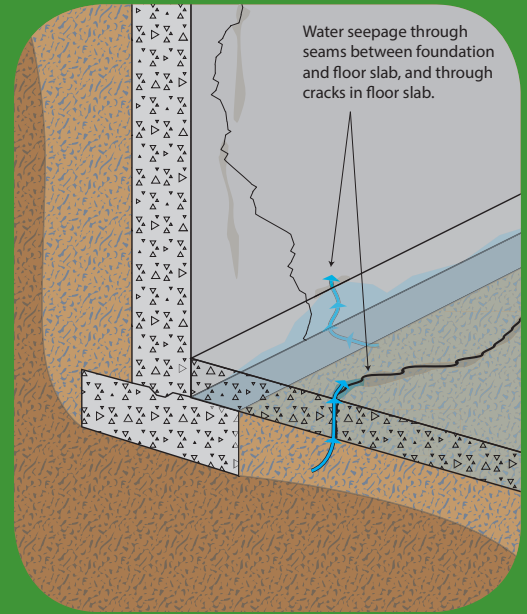


- A - Underseal® Underslab Membrane**
- B - 650 Membrane**
- C - Polyflow® Drainage Composite**
- D - LM-95
(can be Detail Sealant PW™)**
- E - Totalflow™**
- F - Totalflow™ Outlet**
- G - Detail Tape**
- H - 650 LT Liquid Adhesive
(can be Shur-Tac or California Sealant)**
- I - Water Stop (by others)**
- J - Detail Sealant PW™**

what is **HYDROSTATIC PRESSURE?**

Water at rest exerts pressure, which is referred to as "hydrostatic pressure". The force is a function of the height of the water. When it rains and the water table rises, pressure increases and groundwater is pushed into the foundation in all directions. The water spreads into naturally occurring cracks and crevices, deteriorating the foundation and eventually reaching the interior as seepage or dampness.

To withstand hydrostatic pressure, a waterproofing system must be completely integrated and remain intact over decades. That demand requires membranes of exceptional durability and elasticity through freeze/thaw cycling, and resistance to overcome thermal cycling and resistances to native and deposited chemicals in the soil.



EXCELLING UNDER THE PRESSURE.....

Remember the cardinal rule of waterproofing...make sure the system is watertight when first installed and stays water tight when the building is complete. Polyguard's below-grade waterproofing product line includes both sheet and fluid-applied membranes intended for both pre-applied and post-applied applications. Our systems are readily and consistently installable in the field, allowing them to be watertight when initially installed. They are also manufactured to resist the rigors of construction, providing the opportunity for the system to remain water tight into the building close-out and beyond. Having been proven for over 60 years and millions of square feet, our products have withstood the harshest of conditions and when installed on your project, can be trusted for many years to come.



Underseal® waterproofing system utilized for entire foundation. Underslab (horizontal) installed with tie-in to Blindside (vertical).



650 Membrane provides continuous waterproofing for concrete foundation walls.

IDEAL WATERPROOFING APPLICATIONS

- Bridges
- Hospitals
- Airports
- Sports Arenas
- Military and Government Facilities
- Vehicular, Utility and Pedestrian Tunnels
- Office Construction
- Commercial Projects
- Apartment Complexes
- Libraries and Museums
- Schools and Universities



Underlab Membrane being installed to waterproof an elevator pit.



Blindside™ Membrane installed for areas requiring waterproofing that cannot be accessed from the positive side.



Commercial Stretch Fluid-Applied Waterproofing being installed on a foundation wall.



The self-adhering side laps make installation of the Underseal® Underlab Membrane quick and efficient.

FOR THE MOST DEMANDING PROJECTS, INSIST UPON THE BEST IN PROTECTION

YOUR BUILDING ENVELOPE SPECIALIST

Our experienced team of Integrated Building Envelope® Specialists can provide technical expertise and field support throughout every phase of design and construction.

CERTIFICATION AND APPROVALS

Our systems are independently tested to ASTM standards, backed by ISO certification, LARR, and many other vital qualifications to ensure you get the best products and the best protection for your building project.

WARRANTY COVERAGE

Our systems are installed by trained qualified contractors, with available warranty coverage of all components. We offer comprehensive warranty plans to meet your project needs. Visit our warranty process web page for information about our warranty options.

PROVEN PERFORMANCE

You want a company behind you with a track record you can trust. For over 60 years Polyguard has stood the test of time and has developed the best products available in the market. We can provide you with a track record of high profile projects that have successfully utilized our systems throughout the United States.

Call us today at **214-515-5000** or visit our website: **architectural.polyguard.com**

BELOW-GRADE SHEET MEMBRANES

UNDERSEAL® UNDERSLAB MEMBRANE

85 mil, pre-applied concrete pour, **horizontal** waterproofing membrane/vapor barrier eliminates water and vapor transmission through concrete slabs on grade. In addition, it acts as a barrier to provide superior protection to floor finishes and indoor air quality.



UNDERSEAL® BLINDSIDE™ MEMBRANE

73 mil, pre-applied concrete pour, waterproofing membrane used where **vertical**, positive-side waterproofing is required but access to the positive-side is impossible due to the soil retention system. In addition, it acts as a barrier to provide superior protection for indoor air quality.



UNDERSEAL® PRM™ MEMBRANE

65 mil, post-applied concrete pour waterproofing membrane/vapor retarder eliminates water and vapor transmission through concrete slabs. It is designed for use in horizontal/split slab applications and vertical/protected wall applications where waterproofing is critical.



650 MEMBRANE

60 mil, post-applied concrete pour waterproofing membrane/vapor retarder designed for use on wood, concrete block structures and ICF (Insulated Concrete Forms). 650 Sheet Membrane is also available in metric rolls 39.36" x 61'.



6

PRODUCTS	PHYSICAL PROPERTIES						
	Membrane Thickness	Tensile Strength	Elongation	Resistance to Hydrostatic Head	Pull Adhesion	Lap Peel Adhesion	Puncture Resistance
UNDERSEAL® UNDERSLAB	85 mil ASTM D 1000	80 lb ASTM D 4632	839% ASTM D 412	231 ft ASTM D 5385	31.3 lb/in width ASTM D 903	8.7 lb/in width ASTM D 1876	220 lb ASTM E 154
UNDERSEAL® BLINDSIDE™	73 mil ASTM D 1000	80 lb ASTM D 4632	655% ASTM D 412	231 ft ASTM D 5385	14.9 lb/in width ASTM D 903	9.02 lb/in width ASTM D 1876	217 lb ASTM E 154
UNDERSEAL® PRM™	65 mil ASTM D 1000	5000 psi ASTM D 412	850% ASTM D 412	231 ft ASTM D 5385	17 lb/in width ASTM D 903	8 lb/in width ASTM D 1876	127 lb ASTM E 154
650 MEMBRANE	60 mil ASTM D 1000	370 psi ASTM D 412	600% ASTM D 412	231 ft ASTM D 5385	17 lb/in width ASTM D 903	8 lb/in width ASTM D 1876	69 lb ASTM E 154



CHEMICAL RESISTANT MEMBRANES

UNDERSEAL® CRM™

Underseal® CRM™ is a fortified pre-applied sheet membrane purpose built with a multi-component, proprietary chemical resistant backing laminated to a substantial layer of proprietary waterproofing adhesive compound and an integrated high-strength, nonwoven geotextile fabric. This product is intended for both horizontal and vertical pre-pour applications where additional chemical resistance is required.



Pre-Applied

ULTRA CRM™

Ultra CRM™ is a strong, post-applied sheet membrane with a purpose-built, multi-component, proprietary chemical resistant backing laminated to a thick layer of proprietary waterproofing adhesive compound. This product is designed for poured concrete foundation walls, tunnels, parking garages and related applications where chemical resistant waterproofing is critical.



Post-Applied

FEATURES & BENEFITS

Purpose-built, proprietary chemical resistant waterproofing membrane for brownfield applications

Superior Barrier: Provides a barrier that's been designed and tested to withstand elevated concentrations of contaminants typically found in construction sites which may be considered brownfield projects.

Superior Protection: 2 layers of waterproofing protection

Superior Adhesive Bond: Creates a strong adhesive bond when the static load of the concrete slab causes sealant/adhesive compound to have an intimate contact with the concrete surface.

Superior Adaptability: Flexible material that adapts to jobsite irregularities for ease of installation

Superior Joints: Fully-adhering, watertight, chemical and vapor resistant laps.

Quality Composite: Proprietary adhesive compound bonded to a Chemical Resistant Membrane ensures uniform thickness and performance.

Precision: Factory controlled side seams combined with CR™ Seam Tape ensures monolithic application with enhanced seam integrity.

Fully Adhered: Enhancing the durability of the membrane and mitigating lateral water migration.

7

We offer a comprehensive range of accessory products to ensure maximum compatibility and single-source responsibility for your project.



CR™ Seam Tape

CR™ Seam Tape is designed for applications where chemical resistance is required. This 10" x 200' roll is a required complimentary product for detailing the CR™ System.



CR™ Sealant

CR™ Sealant was selected specifically for use in this system due to its outstanding chemical resistance. Available in 3 gallons (2.5 gallon yield)



CR™ Liquid Membrane

CR™ Liquid Membrane provides workability and performance necessary for detailing terminations, and transitions, on approved chemical resistant applications. Available in 1.5 gallons (1.5 gallon yield)



BELOW-GRADE FLUID-APPLIED WATERPROOFING



COMMERCIAL STRETCH

Patented, single-component, cold liquid-applied, elastomeric, thermoplastic rubber coating that cures to form a durable waterproofing membrane capable of bridging substrate shrinkage cracks up to 1/16-inch. Commercial Stretch is designed for below-grade exterior waterproofing of concrete, precast concrete, CMU foundations and other structural surfaces. Can be applied in ambient temperatures as cold as -20° F.



FLUID-APPLIED DAMPROOFING

PRO 1000

Patented, single-component, solvent-based, cold-applied, non-elastomeric, non-breathable, thermoplastic membrane that dries to a UV resistant and tough re-coatable hard coat protective film that stops water passage through a substrate. For designers wanting maximum protection, Proban® mold inhibitor can be added at the factory to provide additional mold-inhibiting properties to the damproofing system.



SPECIALTY WATERPROOFING

PRO 3101

Single-component, cold-applied, non-elastomeric, non-breathable, thermoplastic coating that dries to a UV resistant finish that stops water and other chemical passage from moving through a substrate. PRO 3101 dries to a hard glossy finish that can be recoated. Typical applications include car wash and swimming pool enclosures.



8

PRODUCTS	PHYSICAL PROPERTIES					
	Low Temperature Flexibility	Resistance to Hydrostatic Head	Vapor Permeability	Water Absorption	Usage Temperatures	UV Resistance
COMMERCIAL STRETCH	PASS ASTM C 836	231 ft ASTM D 5385	0.058 perm ASTM E 96	N/A	-20° F up to 120° F	up to 30 days
PRO 1000	PASS ASTM C 836	100+ ft ASTM D 5385	0.45 perm ASTM E 96	< 1% weight ASTM D 95	-20° F up to 120° F	up to 5-7 years
PRO 3101	PASS ASTM C 836	231 ft ASTM D 5385	0.01 perm ASTM E 96	< 1% weight ASTM D 95	-20° F up to 120° F	up to 5-7 years

SPECIALTY SHEET MEMBRANES

BALCONYGUARD™

A 60 mil waterproofing membrane designed for use specifically on wood deck balcony structures that will be covered with lightweight concrete. To save time and money on the jobsite, our Balconyguard™ System includes custom corner boots for ease of installation and detailing. Balconyguard™ is the perfect solution for apartment and multi-family construction as well as on projects with a large number of balconies or decks.



TILEGUARD™ ANTI-FRACTURE UNDERLAYMENT

A 40 mil composite membrane of fabric and rubberized asphalt. This elastomeric, self-adhesive membrane is available in rolls with silicone release sheet. It retards reflective cracking due to substrate movement, helping to prevent cracks in the subfloor from appearing in the tile surface above.



DECKGUARD® HT ROOFING AND WATERSHIELD UNDERLAYMENT

High heat 40 mil premium membrane which can be exposed up to 260° F. Deckguard HT is composed of a high strength, slip resistant spider web backing laminated to a high performance high heat asphalt compound with a film release for ease of application. The release liner is removed leaving a strong asphalt compound to bond to the roof deck. Excellent product choice for steep slope, metal roofing, tile and slate roofing applications.



PRODUCTS	PHYSICAL PROPERTIES					
	Membrane Thickness	Elongation	Peel Adhesion	Tensile Strength	Lap Pell Adhesion	Puncture Resistance
BALCONYGUARD™	60 mil ASTM D 1000	730% ASTM D 412 mod Die C	20 lb/in width ASTM D 903	841 psi ASTM D 412 mod Die C	12 lb/in width ASTM D 1876	61 lb ASTM E 154
DECKGUARD® HT	40 mil ASTM D 1000	> 400% (min.) ASTM D 412 mod Die C	> 4 lb/in width ASTM D 1970	550 psi (min) ASTM D 412 mod Die C	> 10 lb/in width ASTM D 1970	N/A
	Membrane Thickness	Elongation	Peel Adhesion	Low Temperature	Impact Sound Transmission Test	Impact Transmission Loss Test
TILEGUARD™	40 mil ASTM D 1000	1200% ASTM D 412 mod Die C	>10 lb/in width ASTM D 1000	Does not crack when bent over a mandrel at -15° F ASTM D 146	IIC = 69 dB ASTM E 492-04 ASTM E 989-89	STC = 69 dB ASTM E 90-04 ASTM E 413-04

DRAINAGE PRODUCTS TO COMPLETE YOUR SYSTEM

Polyguard's Polyflow® family of geocomposite drainage products combine durability along with the functionality of a filter fabric to meet a variety of drainage requirements and price points anywhere an aggregate drainage system has been used.



PROTECTION APPLICATIONS

10

LOWFLOW™

Lowflow™ Protection and Drainage System is a high-strength, multi-layer fabric composite, designed to protect underlying waterproofing membranes and provide a low cost protection drainage mat which is suitable for most clay soil conditions.



TOTALFLOW™ DRAINAGE SYSTEM

Totalflow™ is a prefabricated, high-capacity sheet molded perimeter drainage system constructed using a formed polystyrene core, designed specifically to transition water collected from sheet drains to an outlet drain. It replaces old fashioned French drainage systems.



DRAINAGE & PROTECTION APPLICATIONS

Polyflow® 10/10P drainage mats are two-part and three-part, prefabricated, geocomposite drains consisting of a formed core covered on one side with filter fabric. The three-part includes a built-in polymeric film protection layer, and are designed for use in vertical applications as a compatible protection layer for Polyguard waterproofing membranes.

POLYFLOW® 10/10P

Polyflow® 10/10P products have a compressive strength of 11,000 lb/sf, a flow rate of 18 gpm/sf.



POLYFLOW® 15/15P

Polyflow® 15/15P products have a compressive strength of 15,000 lb/sf, a flow rate of 21 gpm/sf.



POLYFLOW® 18

Polyflow® 18 have a compressive strength of 21,000 lb/sf, a flow rate of 23 gpm/sf. This product is specifically designed to receive poured concrete in the toughest of conditions to stand up to the stresses of a horizontal application.



DETAILING AND ACCESSORY PRODUCTS FOR A SEAMLESS INTEGRATION

Polyguard's Waterproofing Systems are complimented by a comprehensive range of accessory products to ensure maximum compatibility and single-source responsibility for your project.



Detail Sealant PW™

Single-component, STPE, moisture-cured, elastomeric sealant. It is an environmentally-friendly, non-isocyanate product that replaces silicone and urethane sealants. It is a low VOC/HAPS free, cold-applied, self-adhesive, elastomeric sealant.

Available in 3 gallon pails and 20 oz sausages.



California Sealant

Rubber-based sealant specifically formulated to provide excellent adhesion. VOC content meets the South Coast Air Quality Management District Regulations. It is used to prime all structural concrete, masonry, or wood surfaces. Designed to be used on applications down to 25°F (-4°C).

Available in 5 gallon pails.



650 LT Liquid Adhesive

Rubber-based, tacky adhesive specifically formulated to provide excellent adhesion. It is used to prime all structural concrete, masonry, or wood surfaces. Designed to be used on applications down to 25°F (-4°C).

Available in 1 and 5 gallon pails.



Shur-Tac Liquid Adhesive

Polymer emulsion based adhesive specifically formulated to provide excellent adhesion used to prime structural concrete, masonry, or wood surfaces. Often used with ICF's (Insulated Concrete Form Systems). Designed for used in ambient surface temperatures of 40°F (5°C) and rising.

Available in 1 and 5 gallon pails.



LM-85 SL

Two-component, semi self-leveling, asphalt-modified, urethane material. It is used for new and repaired concrete horizontal surfaces. Designed to be used in ambient and surface temperatures of 40°F (5°C) and rising.

Available in 5 gallon pails.



LM-95

Two-component, asphalt-modified, urethane material. It is used with Polyguard Membranes for several types of detailing applications. Designed to be used in ambient and surface temperatures of 40°F (5°C) and rising.

Available in 2 gallon pails.



Detail Tape

Strong, pliable, self-adhesive sheet consisting of high density polyethylene film bonded to a layer of rubberized-asphalt waterproofing compound. Wound on a disposable silicone treated release sheet to prevent sticking.

Available in 12" widths.



606 Tape

High-strength, double-sided tape comprised of rubberized-asphalt. Provides a fast, non-volatile solution for tie-in details of various Polyguard membranes.

Available in 4" & 6" widths.

11

Underseal® Waterproofing System: Custom Accessories for Watertight Transitions



Underseal® Corner Boots

Unique to Polyguard, our Detailing Boots are a 60-mil combination of rubberized asphalt bonded to polyethylene. The adhesive surface is covered with a release liner which will be removed prior to application. Boots are available for inside corners, outside corners, pit top corners, and for our Balconyguard™ System.

Sold in cartons of 25.



Poly Cover

Poly Cover is a preformed, dome-shaped tie-back cover; made with a heavy-duty, high-impact ABS plastic. It is designed to cover protruding tie backs that protrude up to 6" into excavations with timber lagging retention systems prior to application of the Underseal® Blindside membrane.

Sold individually.



Fabric Tape

Fabric Tape is designed for use with the Underseal® Underslab and Blindside membranes. It's a rubberized asphalt waterproofing membrane laminated to a geotextile fabric backing. The membrane is wound onto a disposable silicone treated release sheet to prevent the membrane from sticking onto itself while on the roll. Fabric Tape is used around pipe penetrations, end laps, and for patching damaged areas of the Underseal® Underslab and Blindside.

The Integrated Building Envelope® System - One solution for all your project needs.

For over 60 years, Polyguard's high quality products have been protecting structures from moisture and air intrusion on thousands of projects across the United States and globally. Our complete line of commercial grade products for our Waterproofing Systems, Air Barrier Systems, and Drainage Systems offer designers and contractors a single-source solution for all of their project needs. When your project demands the best in moisture protection, choose the best products available.

SMART DESIGN, SMART BUILD WITH POLYGUARD

Waterproofing Systems

Polyguard's below-grade waterproofing product line includes membranes intended for both pre and post applied concrete applications. It is anchored by the well known Underseal® brand that includes our Underseal and Blindside™ products. The Underseal® Chemical Resistant Membrane™ and Ultra Chemical Resistant Membrane™ contain a purpose-built, multi-layer backing which repels chemicals away from the building. The Underseal line has exceptional puncture and moisture resistant properties. It also contains technology that creates a permanent seal underneath the concrete slab to eliminate water migration, while remaining flexible to meet the many contours and irregularities found on jobsites. In addition, our fluid-applied waterproofing system can stand up to the toughest weather and jobsite conditions.



Air Barrier Systems

Polyguard offers a variety of sheet and fluid-applied Air, Moisture and Vapor barriers with our popular Airluk Flex®, Airluk® Sheet, and Airluk® STPE WRB family of products. These products come in both permeable and non-permeable options and provide a tough, continuous barrier with exceptional UV resistant properties. Airluk® STPE WRB products are a seamless single-component, cold-applied, Silyl Terminated Polyether (STPE) fluid-applied air barrier and/or flashing material offering a solution specifically designed to protect the building envelope that seals and protects your entire structure. Our fluid-applied air barrier products have passed NFPA 285 and ABAA test protocols.



Drainage Systems

The Polyflow® family of geocomposite drainage products combine the durability along with the functionality of a filter fabric to meet a variety of drainage requirements. Our Polyflow® products can be installed virtually anywhere an aggregate drainage system has been used to relieve hydrostatic pressure more efficiently. Our drainage products offer a superior additional layer of protection for our waterproofing systems.



System Accessory Products

Polyguard Architectural Products, as a single-source manufacturer, offers the necessary building envelope components from the slab to roof. This includes our comprehensive line of superior accessory products that are also compatible with most common structural construction materials. From Adhesives, Sealants, and Tapes to Prefabricated Boots and Flashings, we have virtually all the components you will need to successfully design and construct your project.



For more information about our products:

Contact Polyguard by email: archdivision@polyguard.com

Contact Polyguard by phone: 214-515-5000

Visit our website: architectural.polyguard.com

FOLLOW US ON OUR SOCIAL NETWORK



Polyguard Products, Inc.
P.O. Box 755, Ennis, TX 75120

The information contained in this document is based on data and knowledge considered to be true and accurate at time of printing and is offered for the users' consideration, investigation and verification. Polyguard Products, Inc. cannot be held liable for errors made as a result of information herein. Changes and modifications can be made to this document without prior notice. No statement, recommendation or suggestion is intended for use which would infringe on patents or copyrights held by Polyguard Products, Inc.