



# TRIDENT TRACTOR MODEL 404 CONTROLS & FUNCTIONS



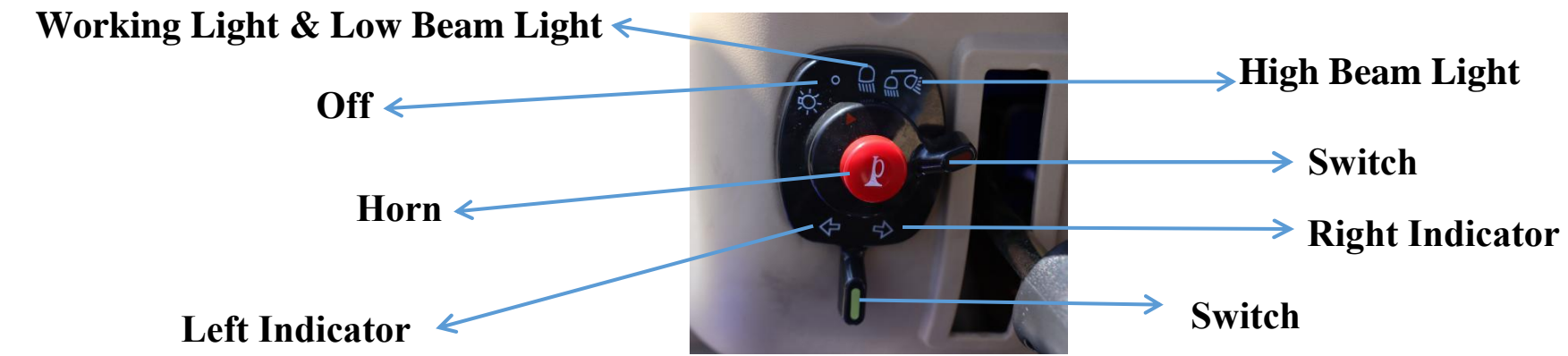
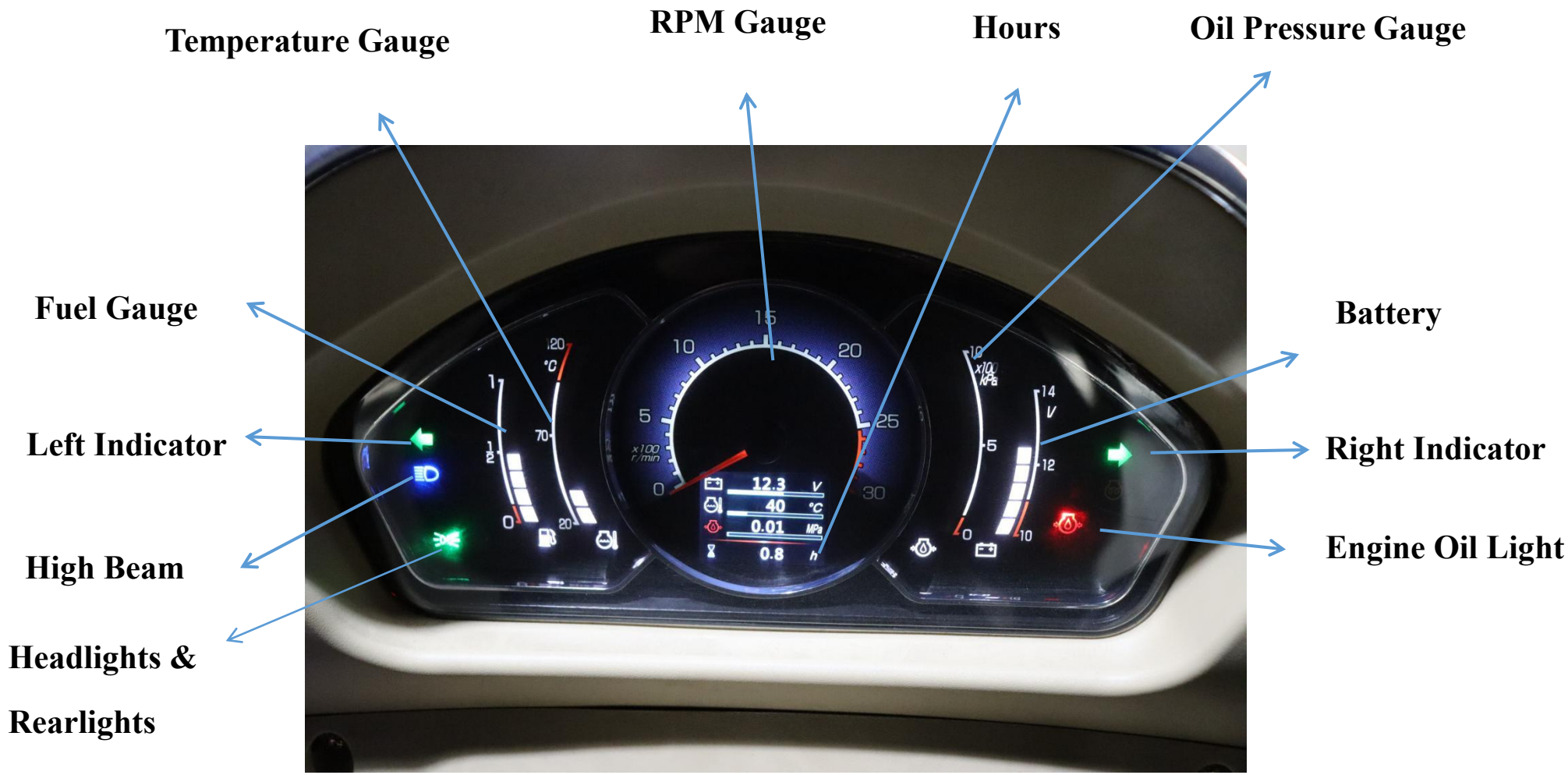
Direct Line: 08 7228 6817  
Mobile: 0404 933 004



Website: [www.nicolasmachinery.com.au](http://www.nicolasmachinery.com.au)  
Email: [terry@nicolasmachinery.com.au](mailto:terry@nicolasmachinery.com.au)

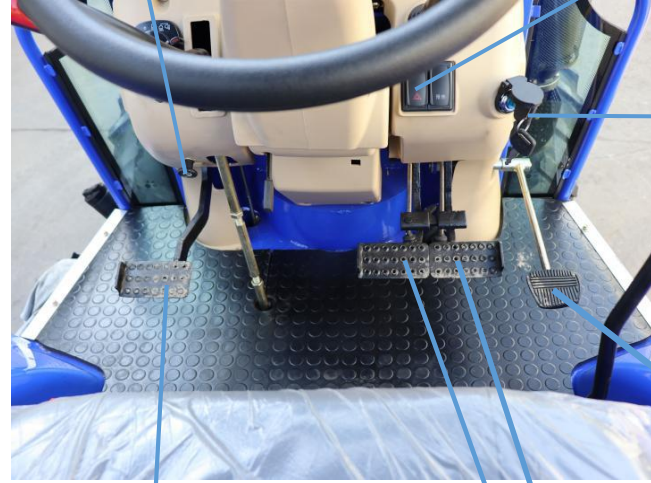


Address: 40 Donegal Road Lonsdale, SA 5160  
Facebook: <https://www.facebook.com/nicolas.machinery>



**Kill Switch (Engine Stop)**

**Hazard Light**



**Ignition Barrel**

**Shuttle Shift**

**Steering Wheel**

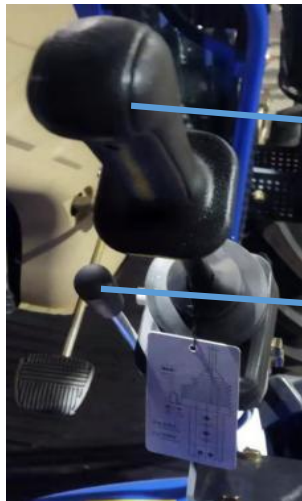
**Hand Throttle**

**Dual Clutch**

**Clutch**

**Rear Brakes**

**Accelerator**



**Front End Loader Control lever (Fwd/Up/Down/Tilt)**

**4 in 1 Control Lever**

**Adjust\***

**\*It is the customer's responsibility to periodically adjust the free play of the clutch pedal. The clutch pedal clearance between the release lever and bearing determines play and clearance vary as the tractor is used. So, generally, play increases at the beginning of use, but decreases over time. When free play reaches zero the clutch will begin to slip because the release bearing is turning at all times. If this is not adjusted, then the bearing will overheat and may get stuck due to wear and scorching of the clutch disc.**

**PTO High/Low**

**High / Low Gear**

**Hand Brake**

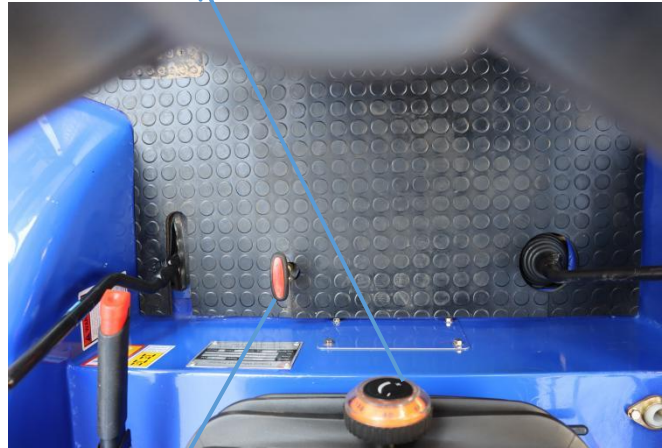


**Gear Stick**

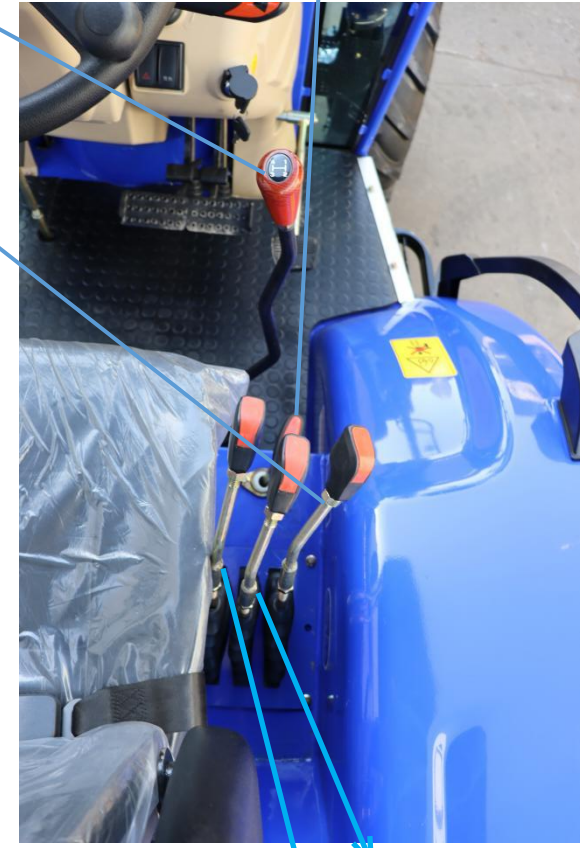
**Differential Lock**

**3PL Control Lever**

**Seat Adjustment**

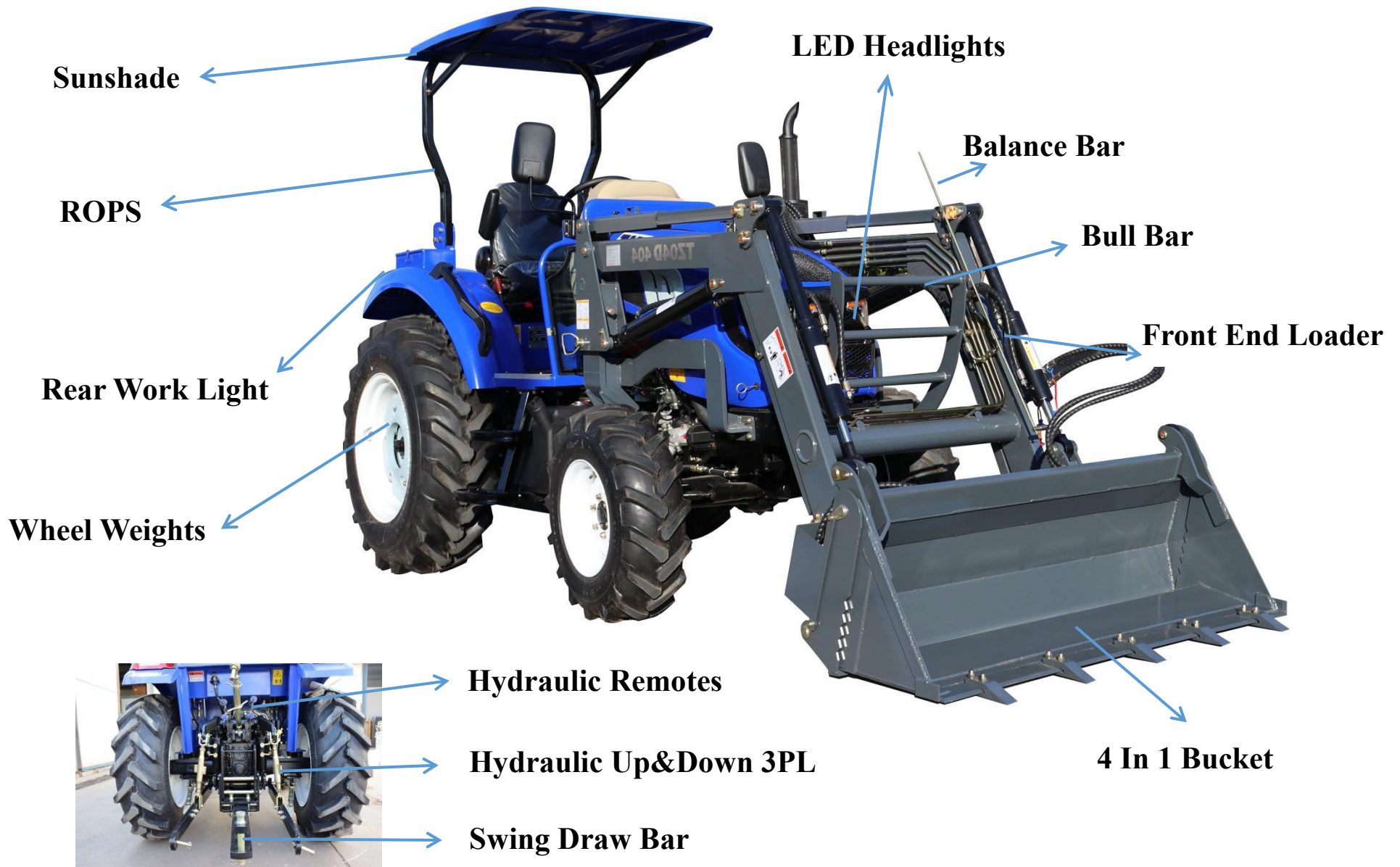


**4WD\***



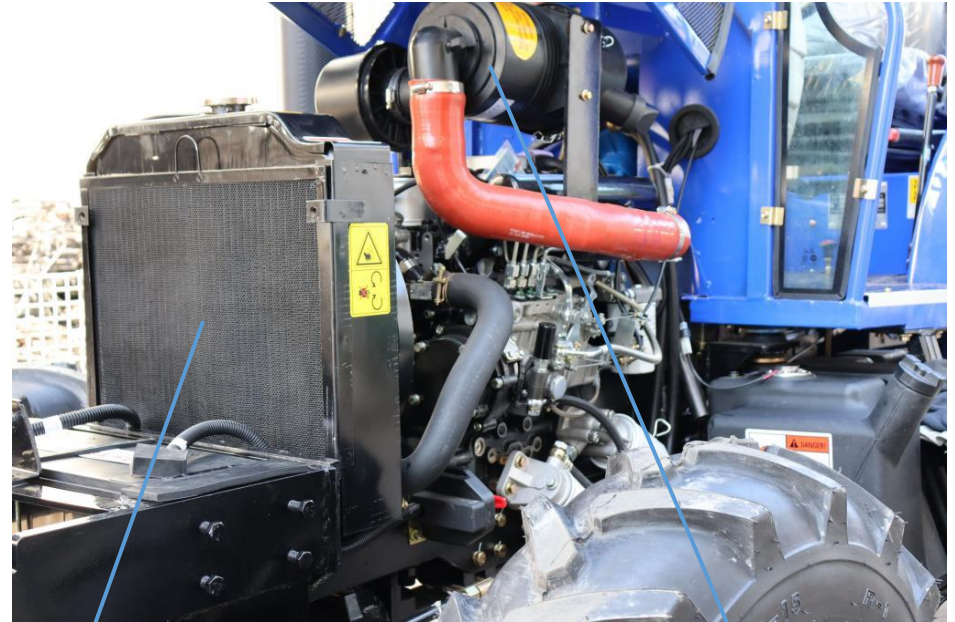
**Hydraulic Remote  
Controllers**

**\*Please be noted: The tractor should always be in 2WD under normal usage. 4WD is only used on demand at low speed first gear in slip area. Do not use 4WD to work on the Front-End Loader otherwise it will potentially damage the front drive due to overweight. You should always change back to 2WD as soon as you are out of the slip area.**





**Bonnet Clip**



**Radiator**

**Air Filter**

**Power Steering Tank**



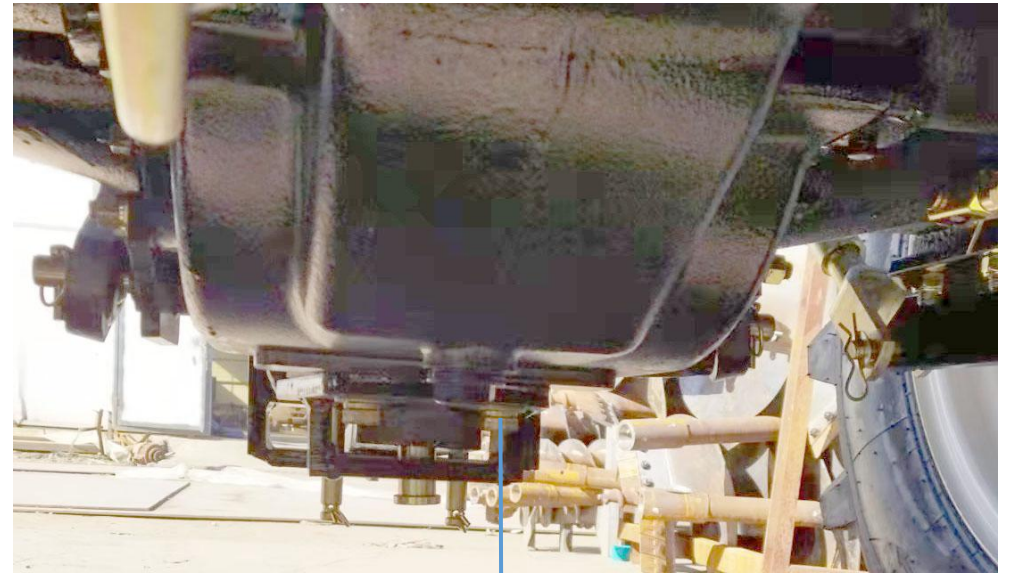
**Check&Fill Hydraulic ISO46 Oil Here**



**Drain Hydraulic ISO46 Oil Here**



**Check Gear &  
Diff Oil Here**



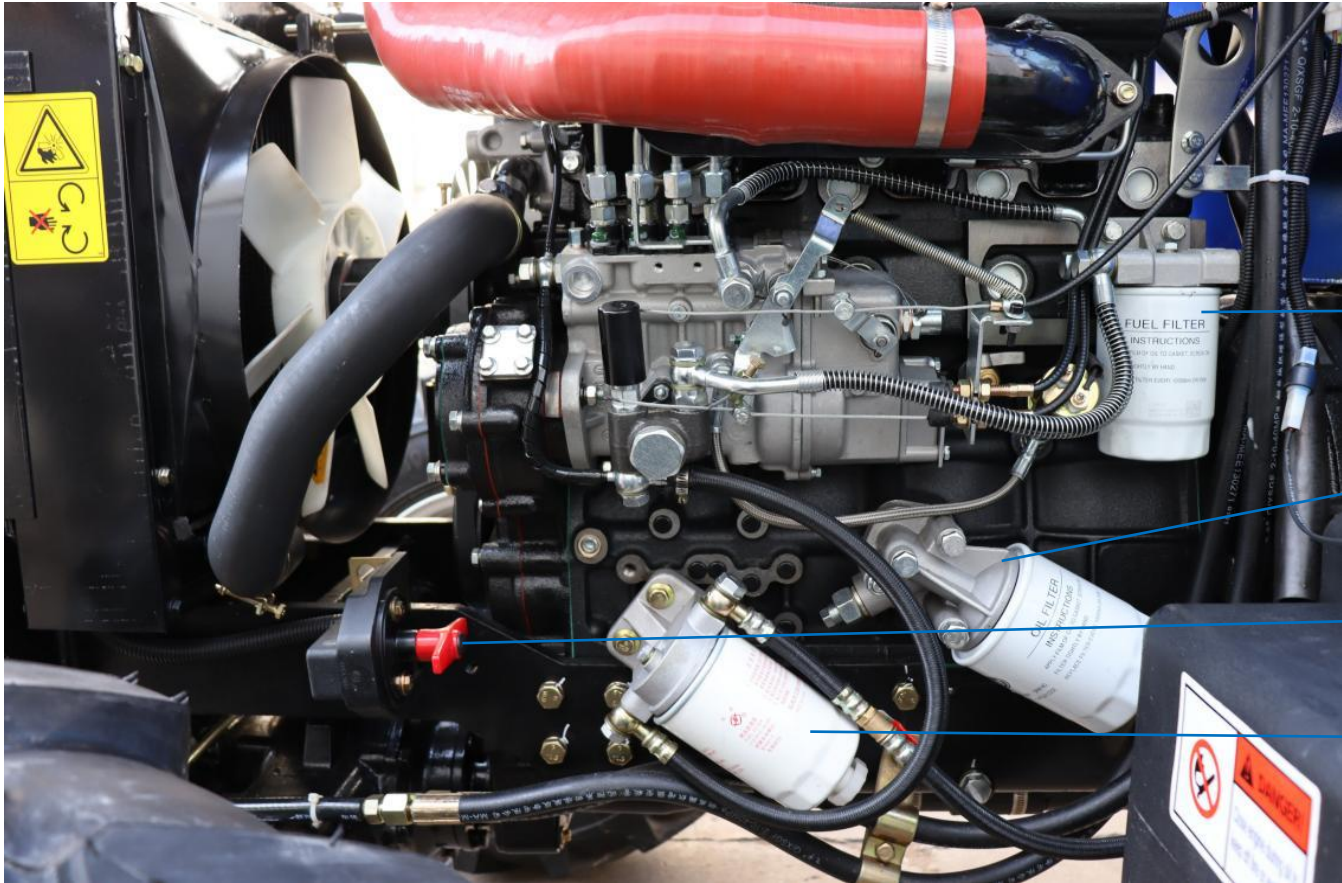
**Drain Gear Box and Diff Oil Here.**

**\*Located Under Tractor**



**Fill Gear &  
Diff Oil Here**





**Fuel Filter**

**Oil Filter**

**Isolation Switch**

**Pre-fuel Filter**

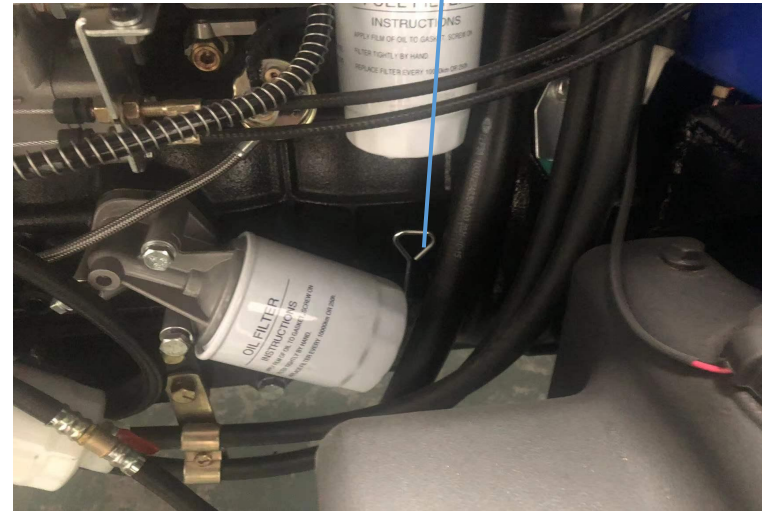


**Hydraulic Filter (Inside)**

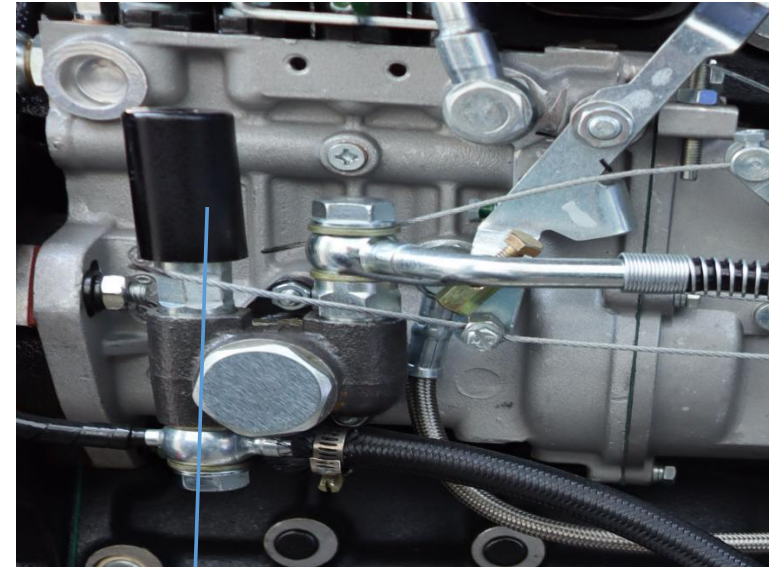
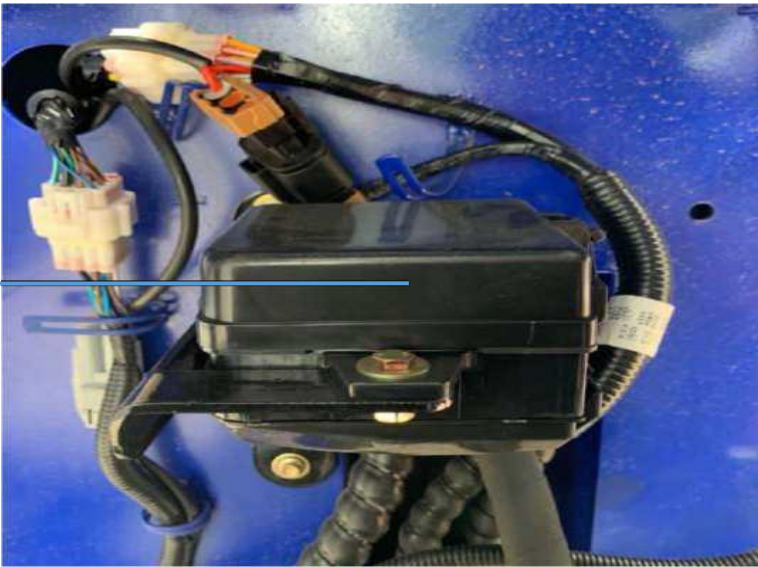
**Fuel Tank (Fill Diesel)**



**Dip Stick -Check Engine Oil**



**Fuse Box**



**Injector Primer/Engine Primer**