



TRIDENT TRACTOR MODEL 604 CONTROLS & FUNCTIONS



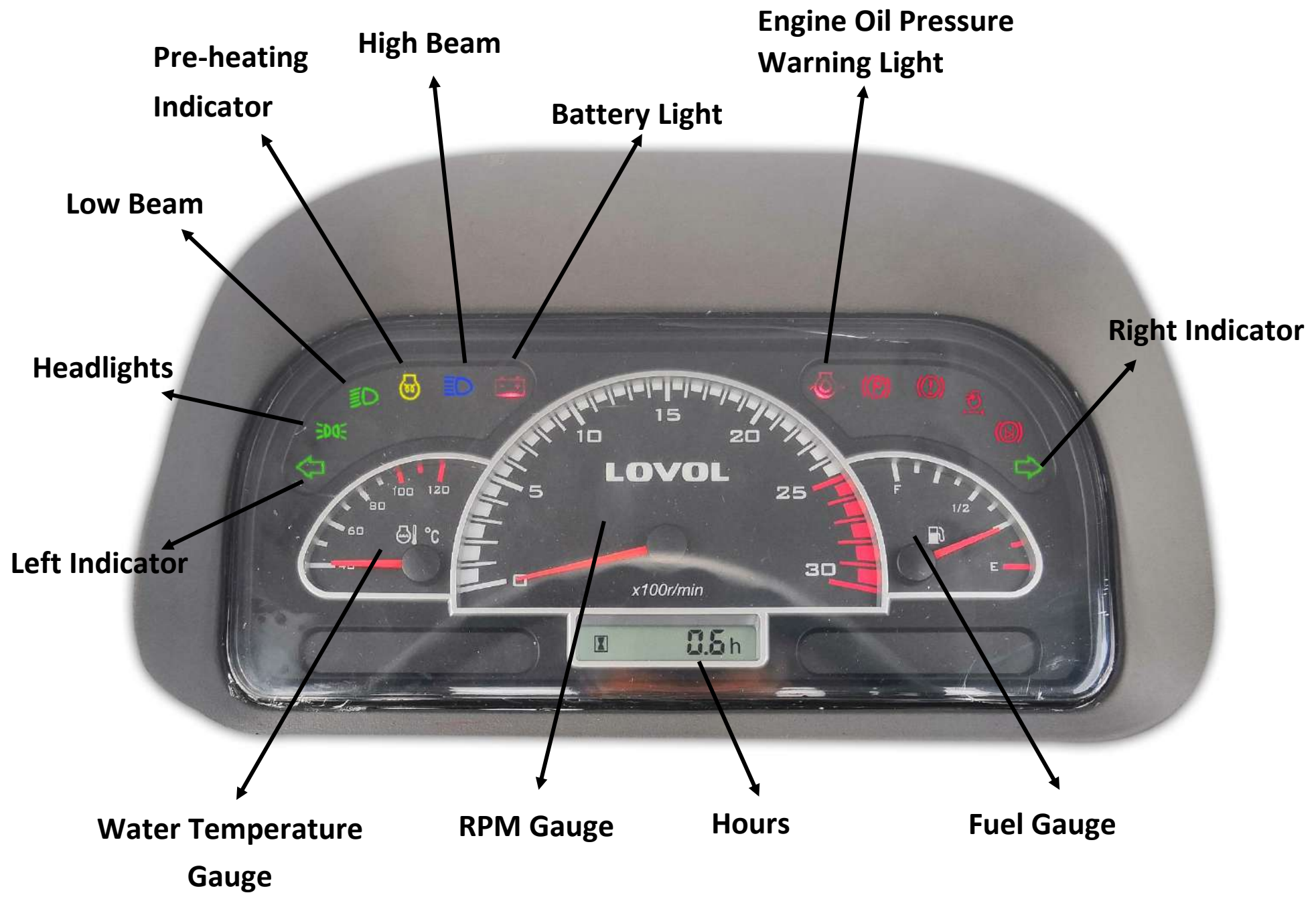
Direct Line: 08 7228 6817
Mobile: 0404 933 004



Website: www.nicolasmachinery.com.au
Email: terry@nicolasmachinery.com.au



Address: 40 Donegal Road Lonsdale, SA 5160
Facebook: <https://www.facebook.com/nicolas.machinery>



Pre-heating
Indicator

High Beam

Engine Oil Pressure
Warning Light

Battery Light

Low Beam

Right Indicator

Headlights

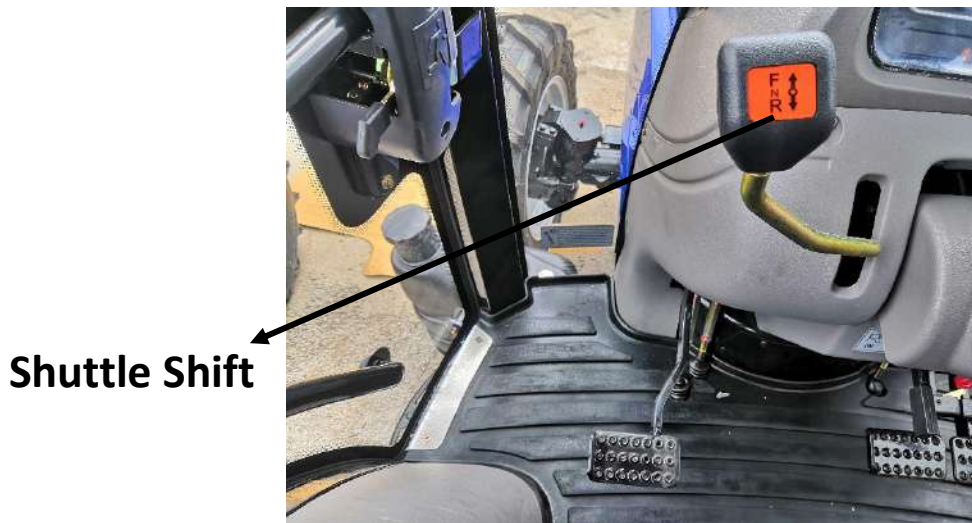
Left Indicator

Water Temperature
Gauge

RPM Gauge

Hours

Fuel Gauge



Shuttle Shift



Hand Throttle

Indicator Lights

Dimmer Switch



Dual Clutch

Ignition Barrel

Accelerator

Shuttle Shift Adjustment

Clutch Adjust*

Kill Switch

Rear Brakes

Brake Adjustment

**It is the customer's responsibility to periodically adjust the free play of the clutch pedal. The clutch pedal clearance between the release lever and bearing determines play and clearance vary as the tractor is used. So, generally, play increases at the beginning of use, but decreases over time. When free play reaches zero the clutch will begin to slip because the release bearing is turning at all times. If this is not adjusted, then the bearing will overheat and may get stuck due to wear and scorching of the clutch disc.*

PTO High / Low

Differential Lock

Gear Stick

High / Low / Medium Gear



Hand Brake

Hazard Light Switch

Light Switch

Rear Working Light Switch

Hydraulic Remote Controllers

Windscreen Wiper

Rear Window Wiper Switch

Radio

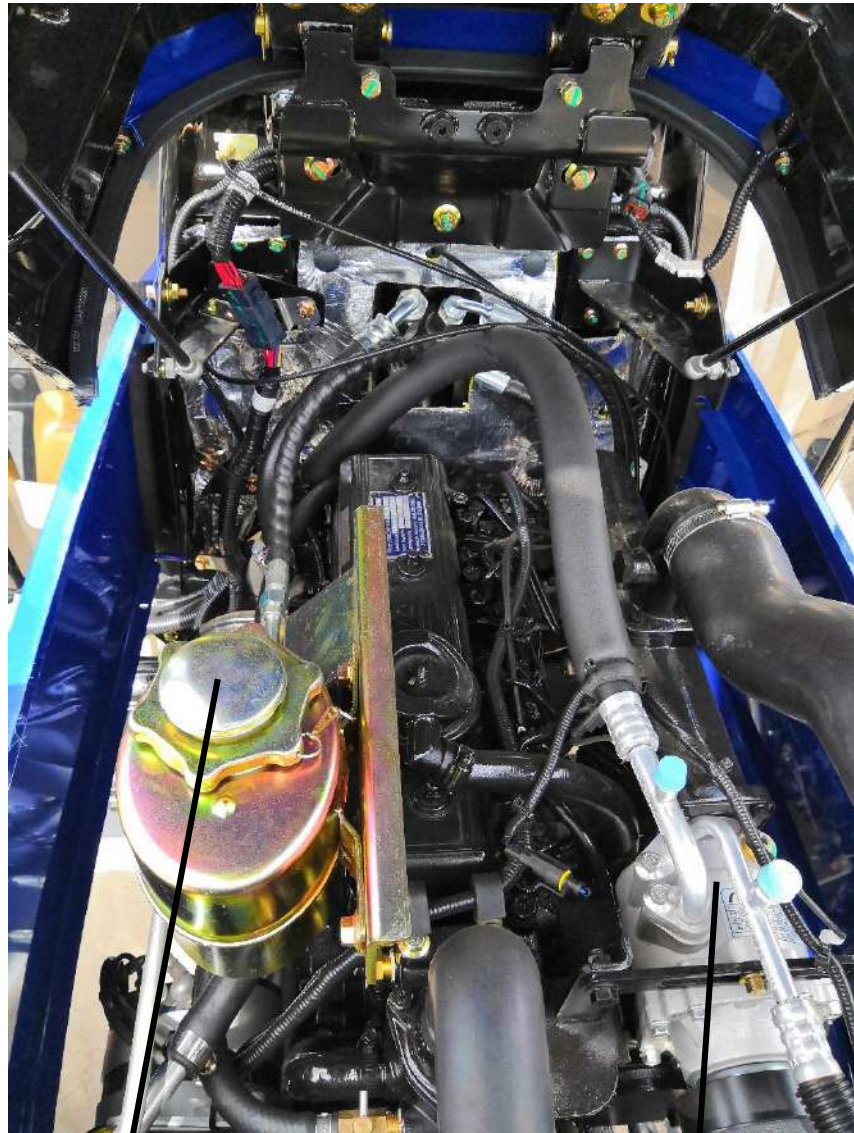
4WD*

Position Control Lever

Draft Control Lever

***Please be noted: The tractor should always be in 2WD under normal usage. 4WD is only used on demand at low speed first gear in slip area. Do not use 4WD to work on the Front-End Loader otherwise it will potentially damage the front drive due to overweight. You should always change back to 2WD as soon as you are out of the slip area.**

Bonnet Clip (Both sides of Tractor)



Raditaor

Air Filter

Power Steering Tank

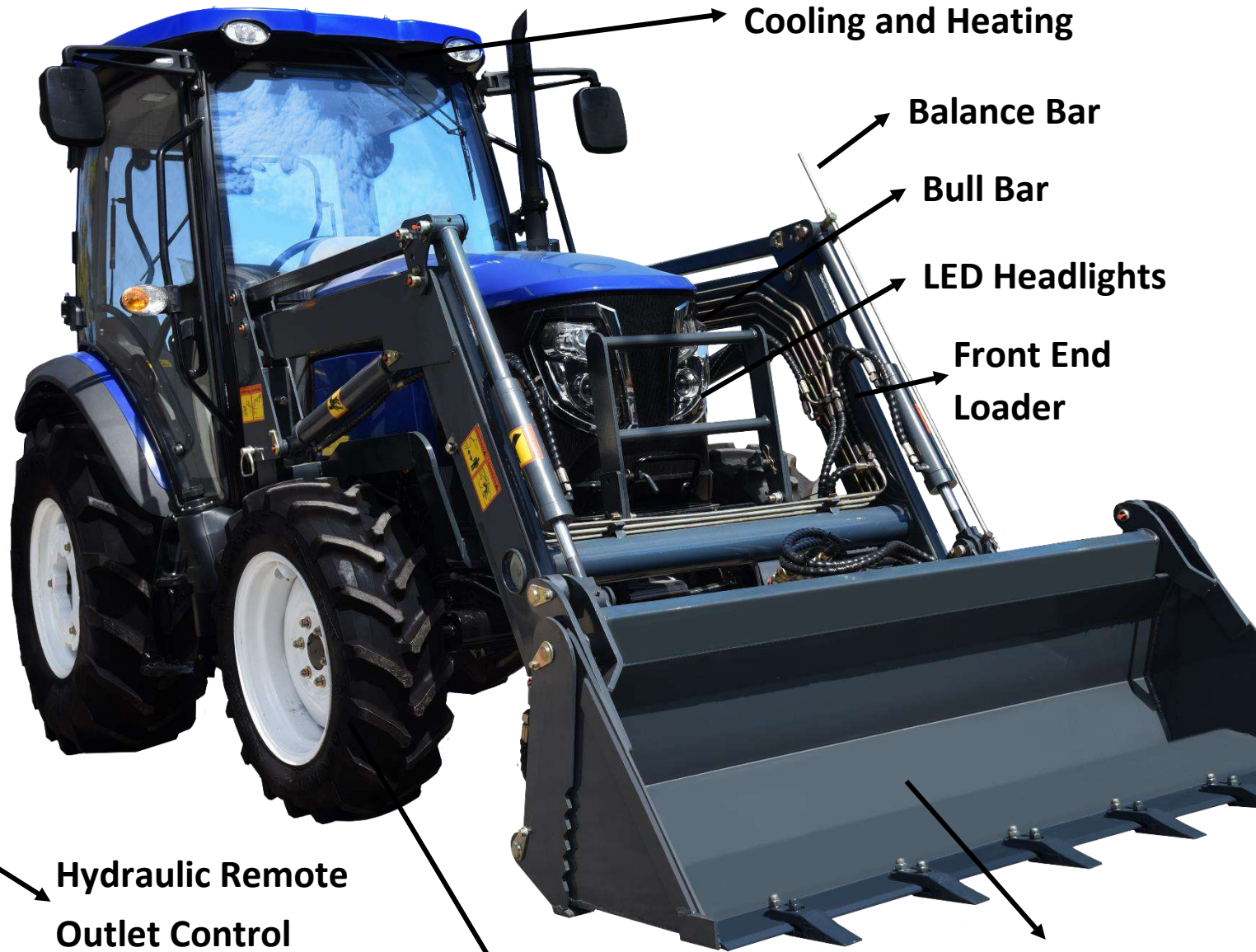
Air Conditioner Compressor



Front End Loader Control lever (Fwd/Up/Down/Tilt)

Horn

Hydraulic Control Box



Deluxe Aircon Cab Cooling and Heating

Balance Bar

Bull Bar

LED Headlights

Front End Loader

4 In 1 Bucket



Hydraulic Remote Outlet Control

Three Point Linkage

Swing Draw Bar

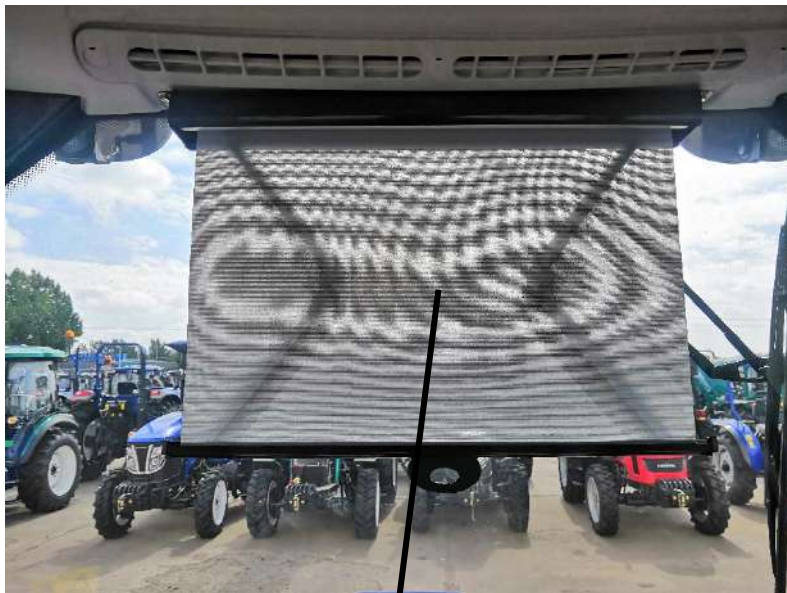
Radial Tires

260/70R20, 380/85R24.

Sunroof Window



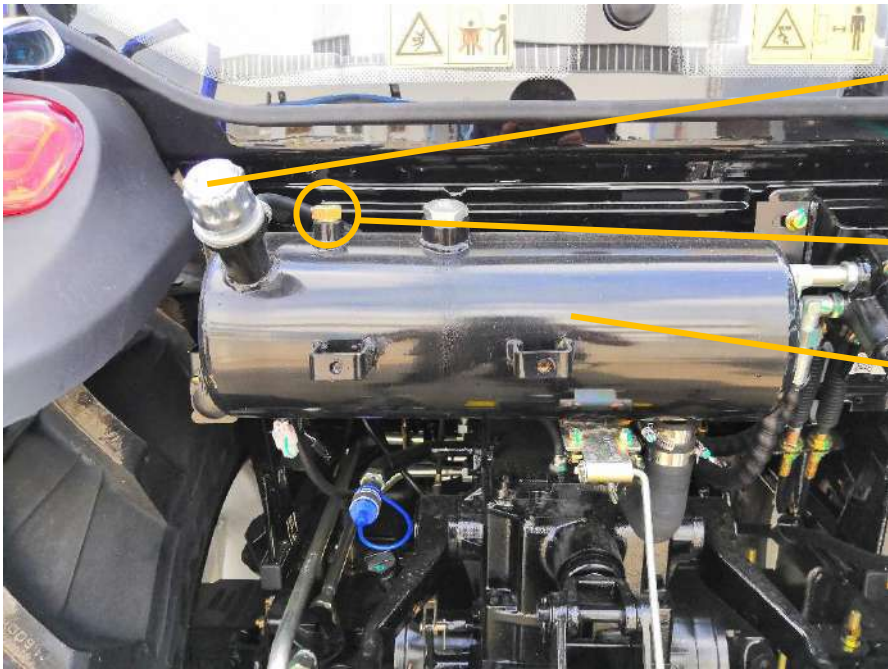
Air conditioner Switches **Air conditioner Vents**



Sun Curtain



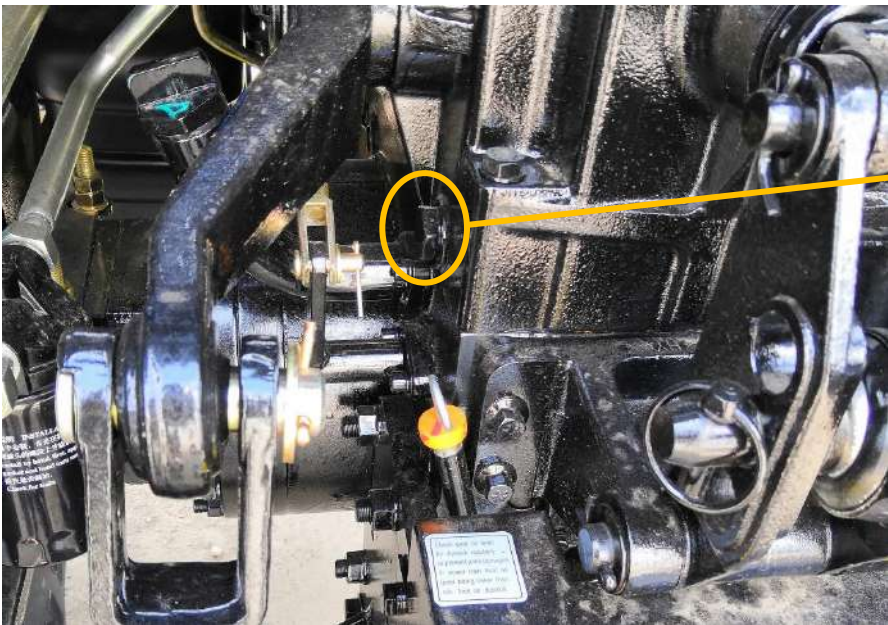
Interior Dome Lamp



Fill Hydraulic ISO46 Oil Here

Check Hydraulic Oil Level Here

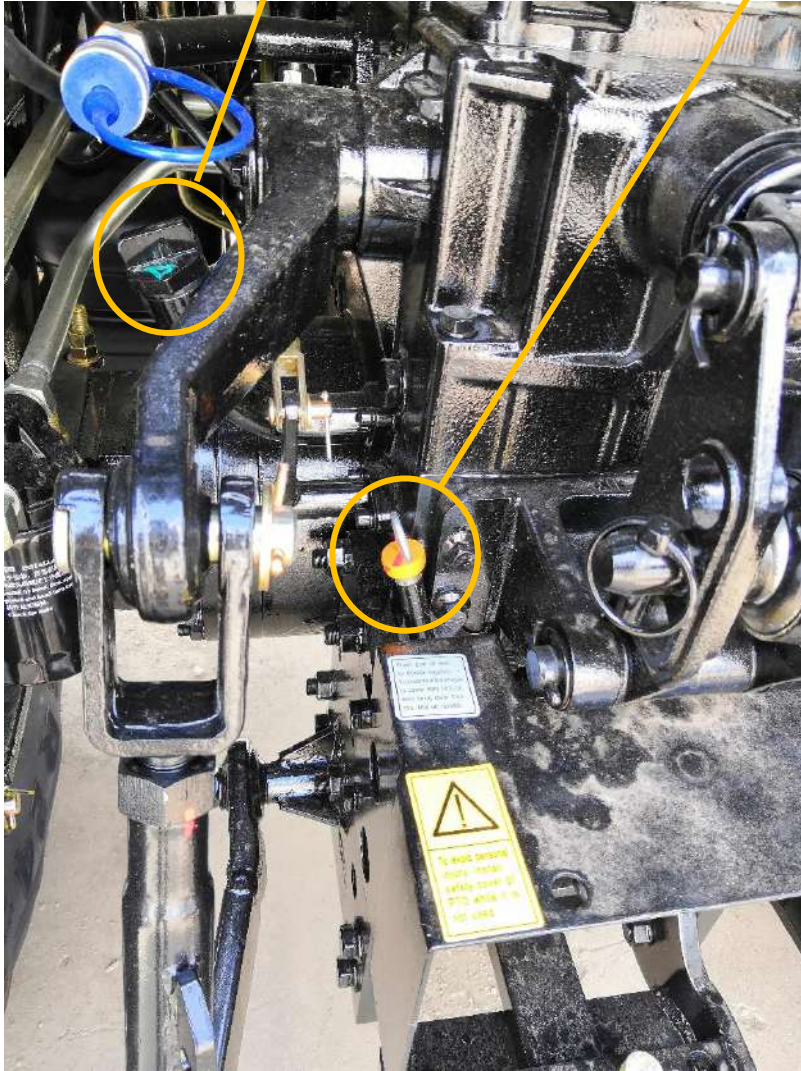
Hydraulic Oil Expansion Tank Here



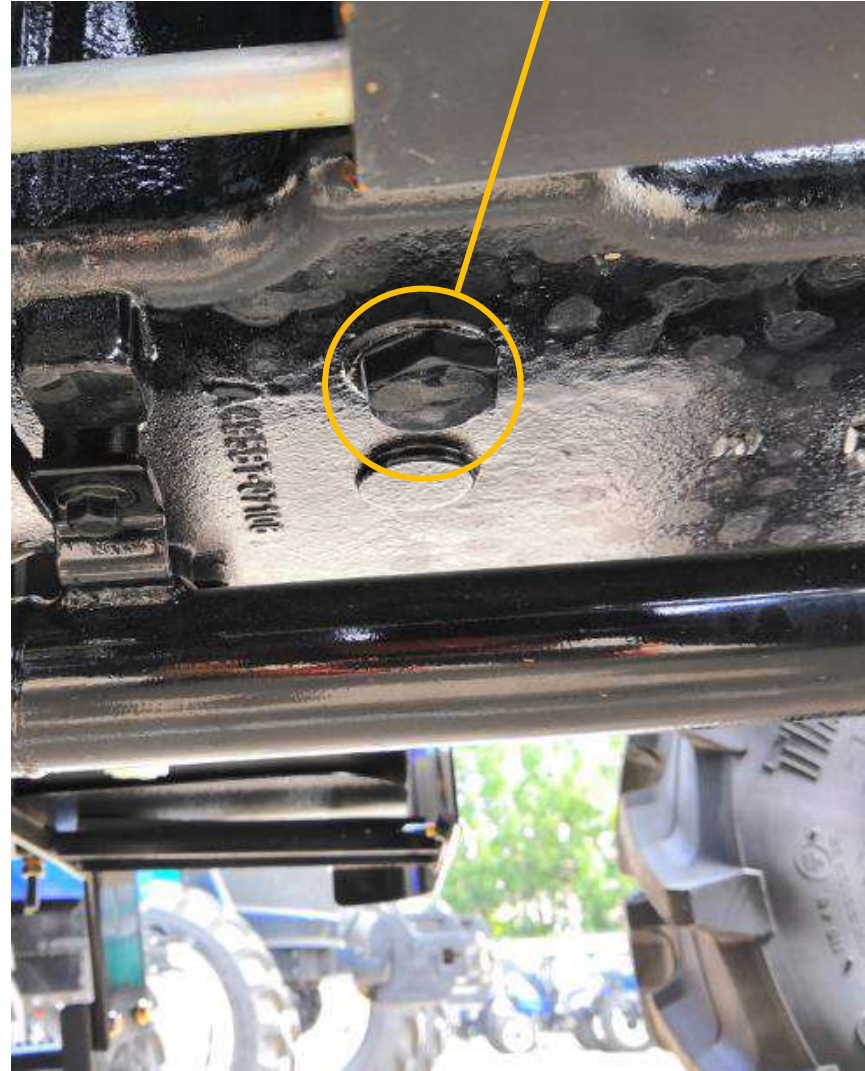
Drain Hydraulic ISO46 Oil Here

Fill Gear Oil Here

Check Gear Oil Level Here



Drain Gear Oil from the Chassis Here
***Located Under Tractor**



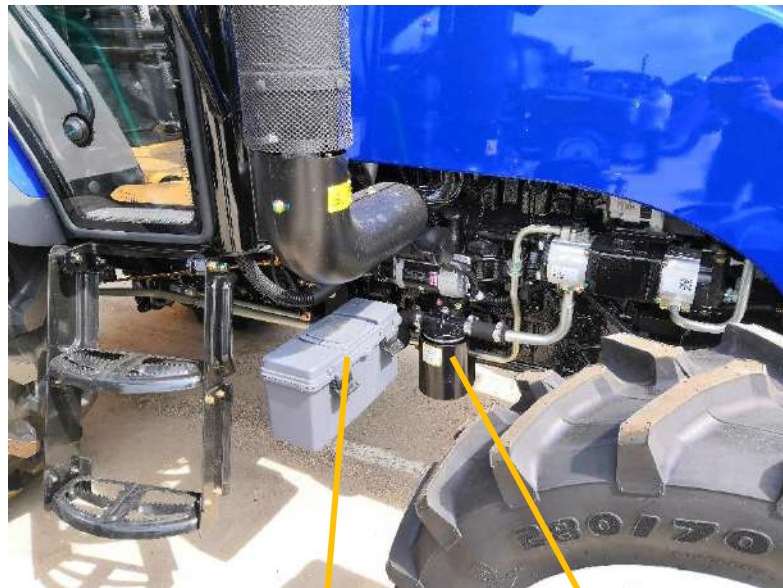
Oil Filter

Fuel Filter

Pre-filter



Dip Stick - Check Engine Oil here



**Injector Primer/
Engine Primer**

Bleed Screw

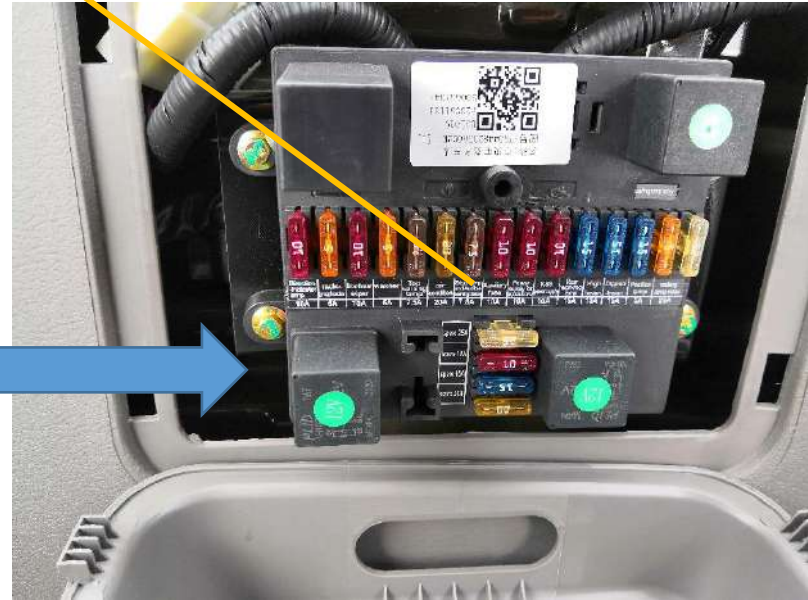


Tool Box

Hydraulic Filter

***Must be changed at 200hrs**

Fuse Box - * Located on the back of the seat



Fuel Tank (Fill Diesel)



Drain Oil from the Front Axle Here