



TRIDENT TRACTOR MODEL 904 CONTROLS & FUNCTIONS



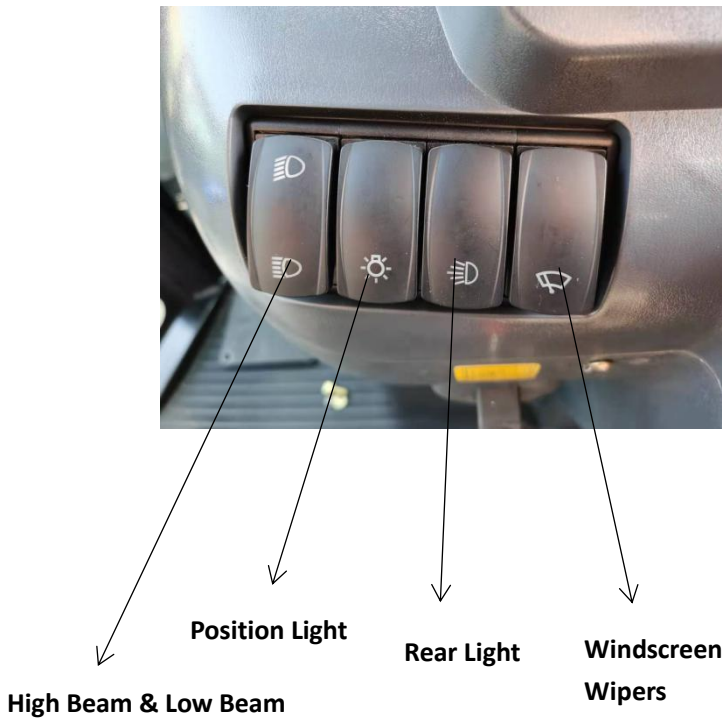
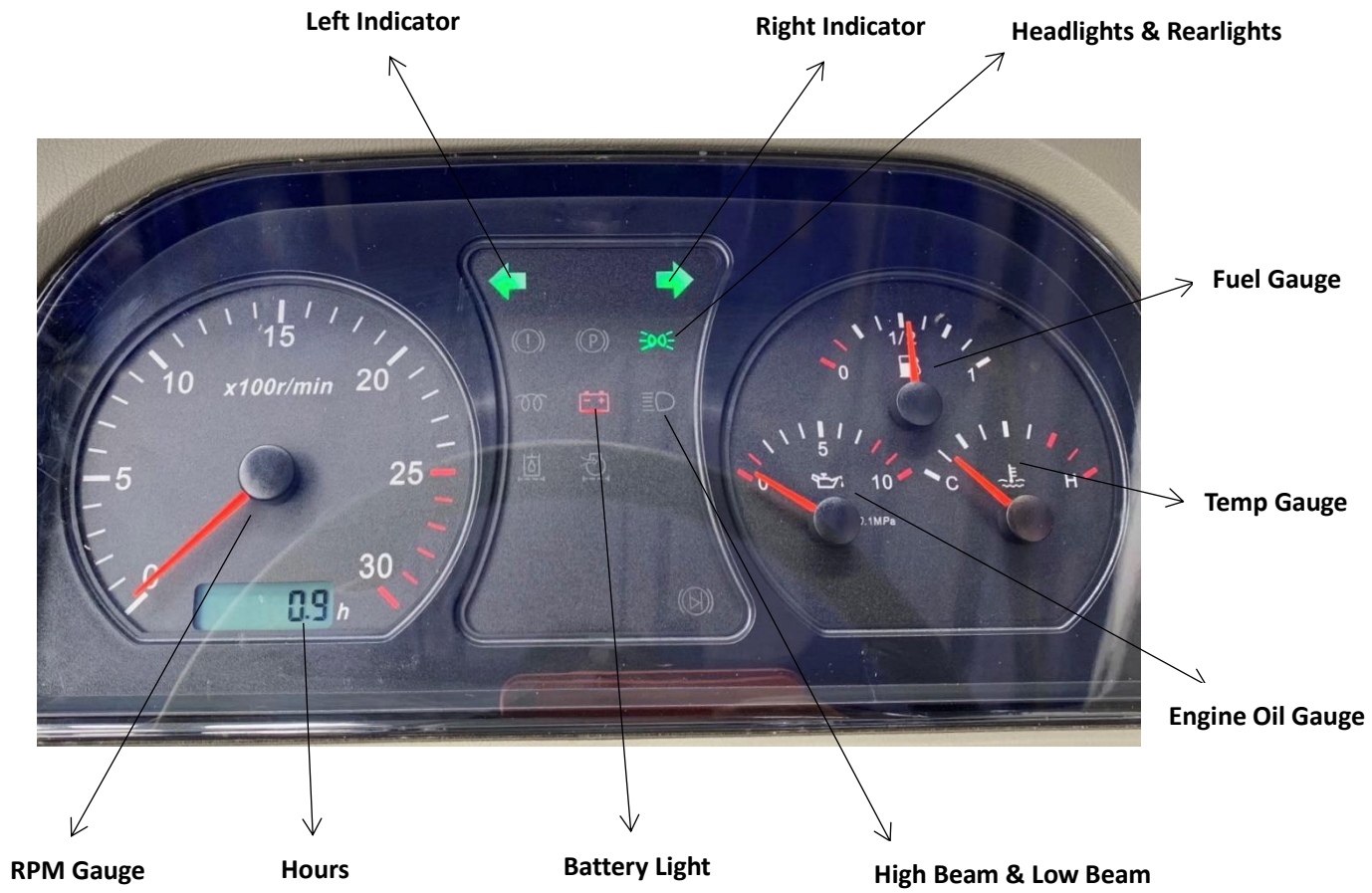
Direct Line: 08 7228 6817
Mobile: 0404 933 004

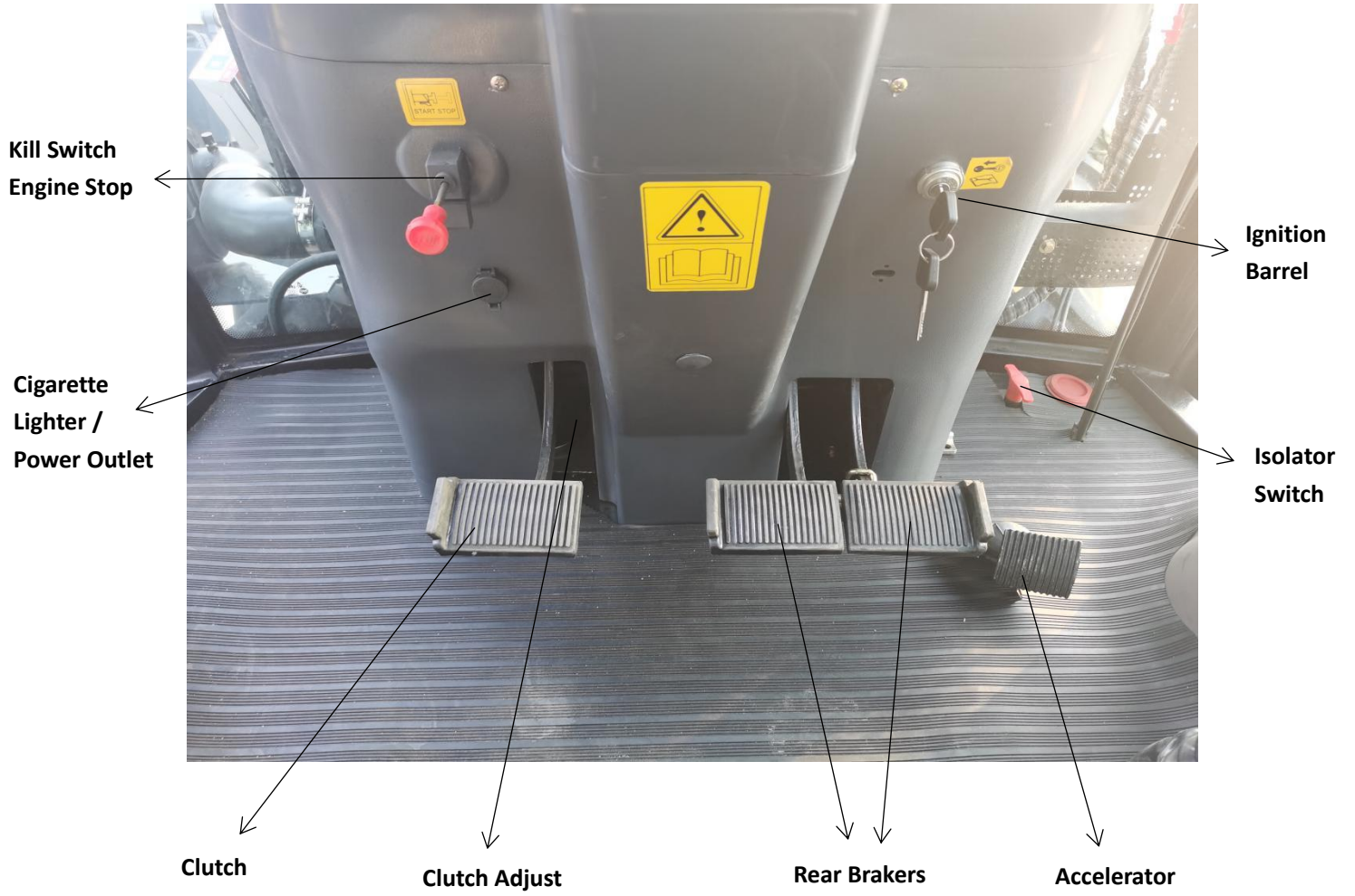


Website: www.nicolasmachinery.com.au
Email: monica@nicolasmachinery.com.au



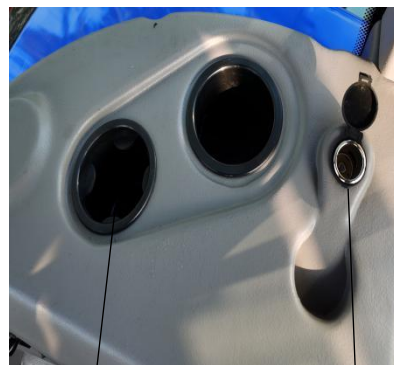
Address: 40 Donegal Road Lonsdale, SA 5160
Facebook: <https://www.facebook.com/nicolas.machinery>





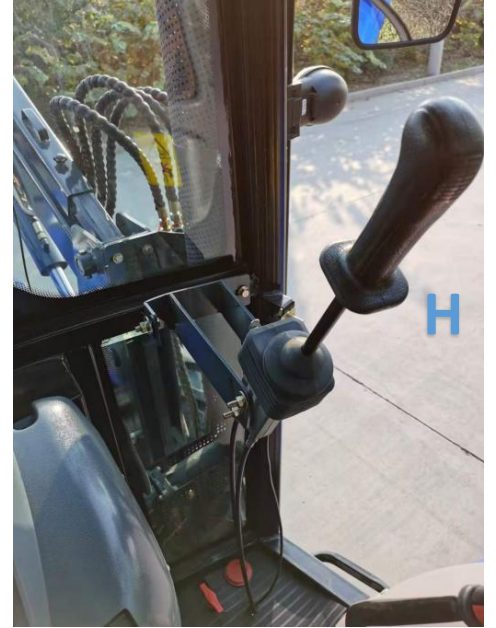
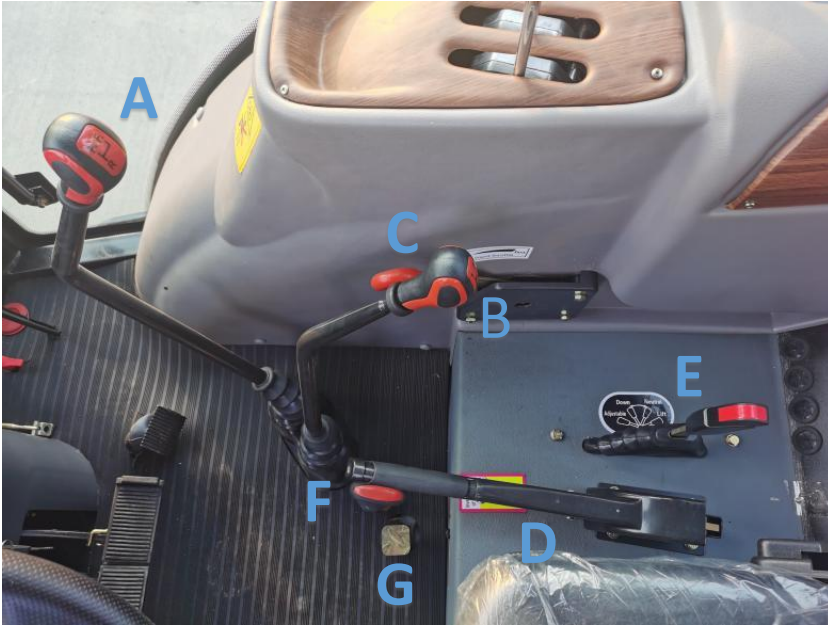
Steering wheel

Horn



Cup holder

Cigarette Lighter



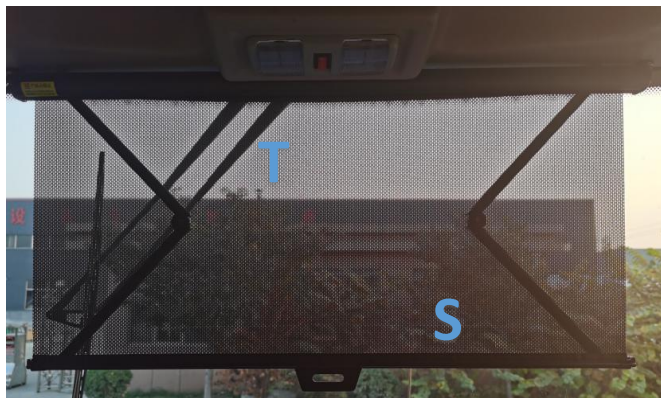
- A - High, Medium and Low Gear
- B - 1234 Gear Stick
- C - Hand Throttle
- D – PTO (Sub) Clutch
- E - 3PL Control Lever
- F - Creeper Gear
- G - Differential Lock
- H - Front End Loader Joystick
- I - Hydraulic Remote Controllers
- J - Hand Brake
- K - PTO High / Low
- L – 4WD

How to use sub clutch: this clutch is only for temporary PTO shut down and should always be released when you drive the tractor.

Please be noted: The tractor should always be in 2WD under normal usage. 4WD is only used on demand at low speed first gear in slip area. Do not use 4WD to work on the Front-End Loader otherwise it will potentially damage the front drive due to overweight. You should always change back to 2WD as soon as you are out of the slip area.



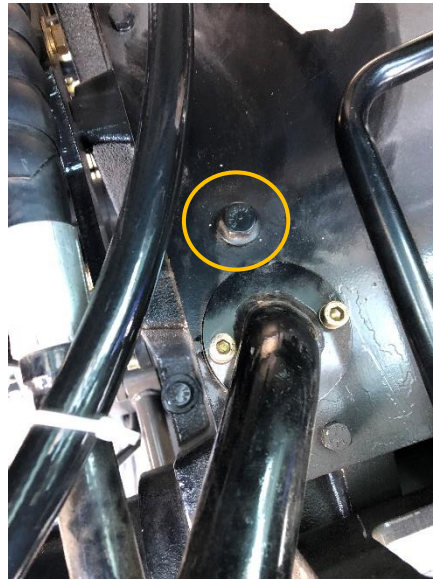
- M - Radiator
- N - Battery
- O - A/C Compressor
- P - Bonnet Clip (Both sides of Tractor)
- Q - Head Lights
- R - Power Steering Tank
- S - Front window curtain
- T - Window screen wiper
- U - Skylight
- V - Interior Light
- W - A/C Controller
- X - Radio







**Fill Hydraulic
ISO46 Oil Here**



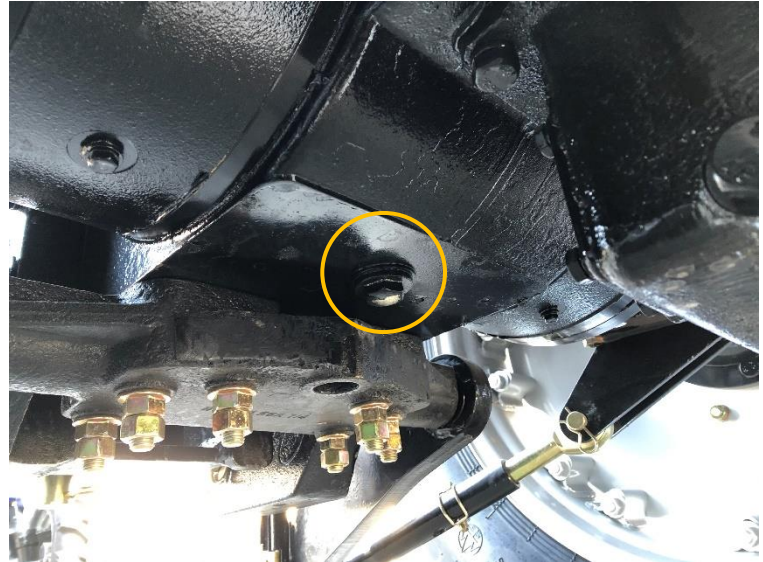
**Check Hydraulic
oil here**



**Drain Hydraulic
ISO46 Oil Here**



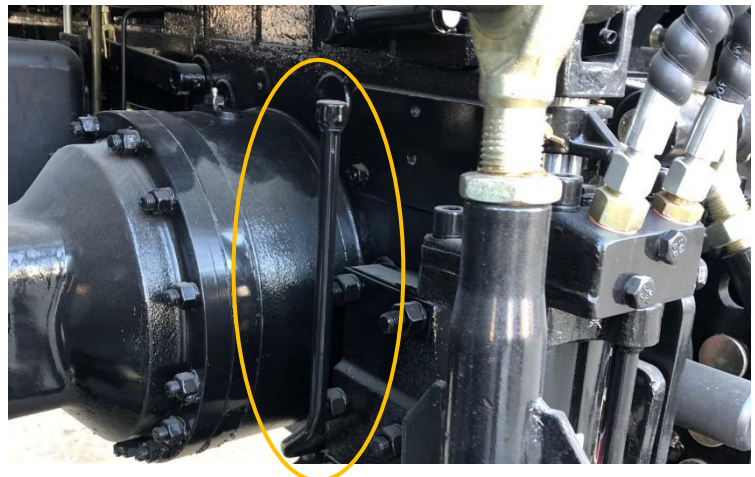
Fill Gear & Diff Oil Here



**Drain Gear Box and Diff Oil Here.
*Located Under Tractor**



Fuse Box



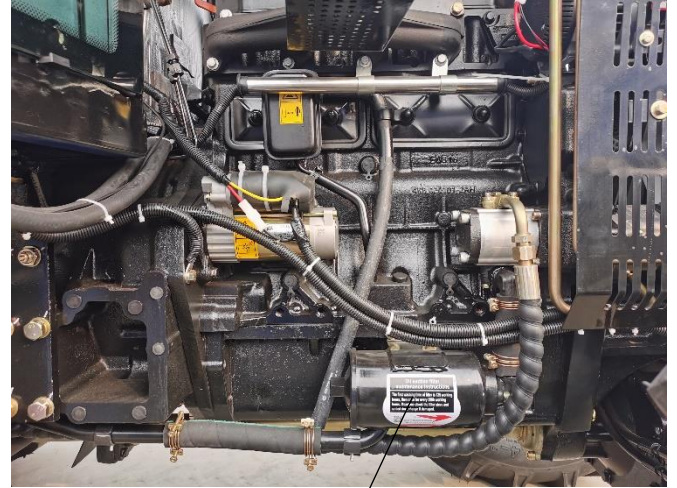
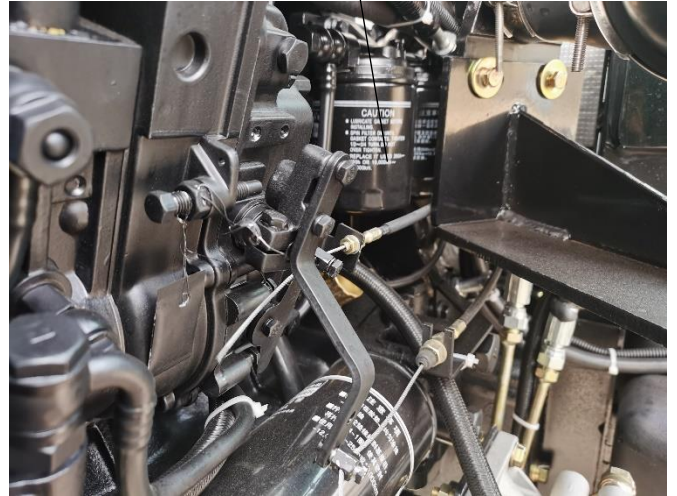
Check Gear & Diff Oil Here

Dip Stick -
Check Engine Oil

Oil Filter

Pre-fuel Filter

Fuel Filters



Air Filter

Fuel Tank

Oil Suction Filter

Return Oil Filter