



## Backhoe Installation Instruction

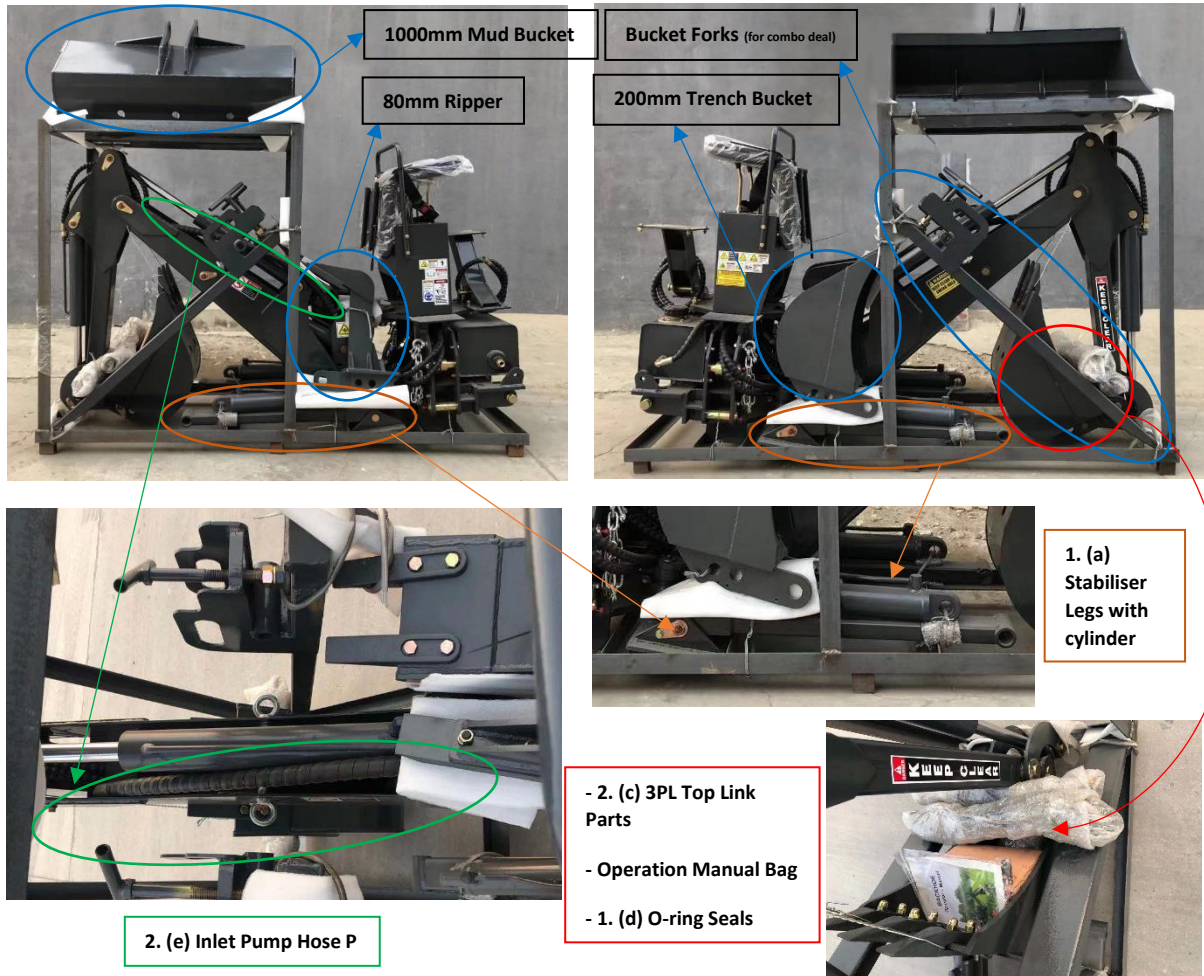
### Pre-installation

- a) Jack tractor up until approximately 20-30 cm from the backhoe;



**CAUTION:** Avoid injury! Operator must be seated in tractor seat when positioning tractor for backhoe installation.

- b) Park tractor safely on a flat level surface; Tractor should not be running;  
 c) Remove the following parts from the steel frame;



### 1. Installation of stabiliser Legs with cylinder

- a) Refer below for the stabiliser leg with cylinder;





b) Install the the stabiliser legs using lock pins. Refer (1) & (2);

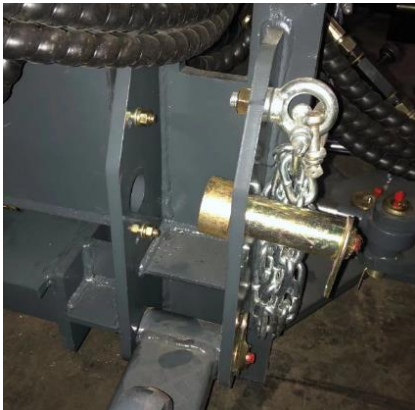


(1)

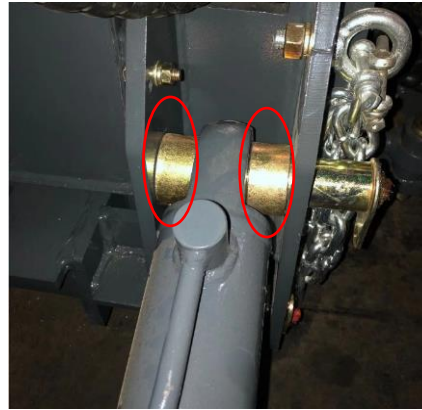


(2)

c) Install the cylinders using lock pins. Refer (3) & (4). Please note there are two shaft sleeves on both side of each cylinder. Refer the circled parts in (4);



(3)



(4)

d) Install oil hoses;

- Firstly install the o-ring seals in the oil hose joints. Refer (5) & (6). The O-ring seals are packed in the operation manual bag;

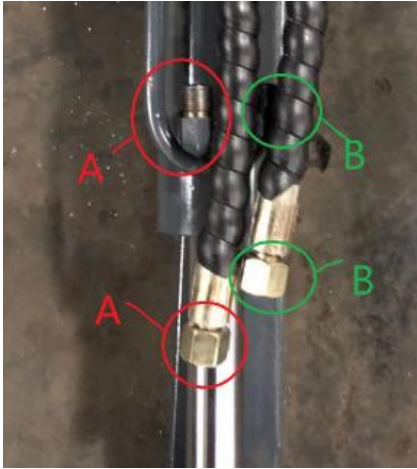


(5)

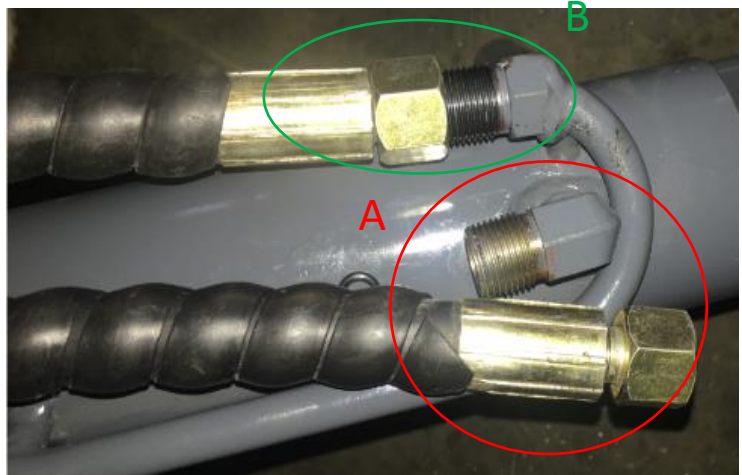


(6)

- Then install the oil hoses. Refer (7) & (8). Please note Joint A matches the longer oil hose, joint B matches the shorter oil hose;



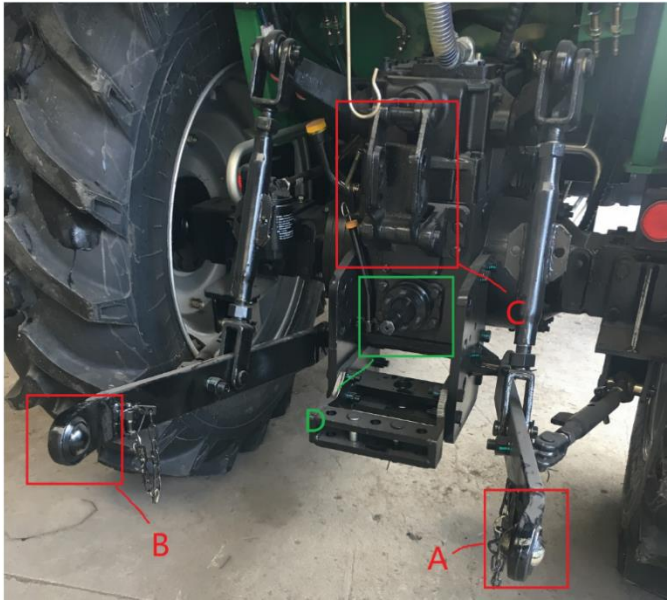
(7)



(8)

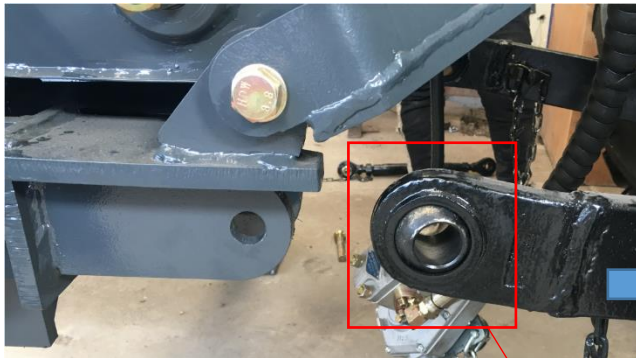
## 2. Attaching the backhoe to the tractor

- a) Refer below (9) for the tractor 3PL (A, B & C) and PTO (D);



(9)

- b) Connect the backhoe to 3PL Points A & B using lock pins. Refer (10), (11) & (12);



(10)



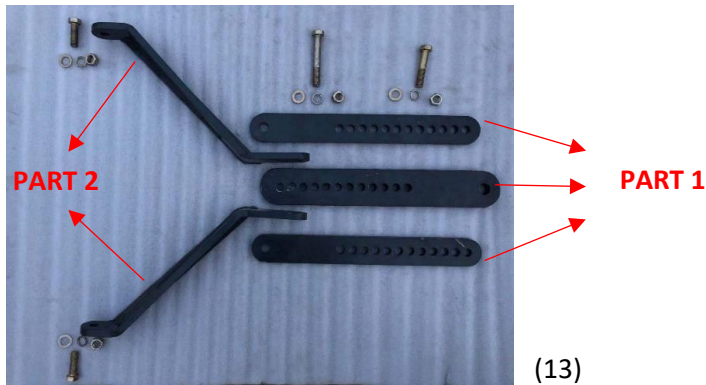
(11)



(12)



- c) Connect the backhoe to 3PL Top Link C;  
- Refer below (13) for the 3PL Top Link Parts;

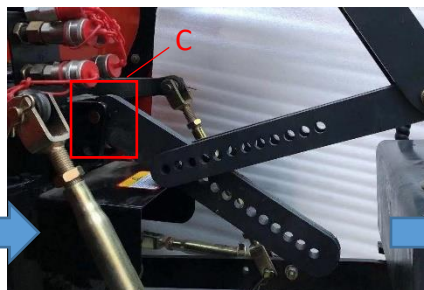


Once installing this device do not attempt to raise or lower your backhoe otherwise damage will occur

- Firstly install PART 1 (main rod) on the backhoe and connect the backhoe to 3PL Top Link C using lock pins. Refer (14), (15) & (16);



(14)

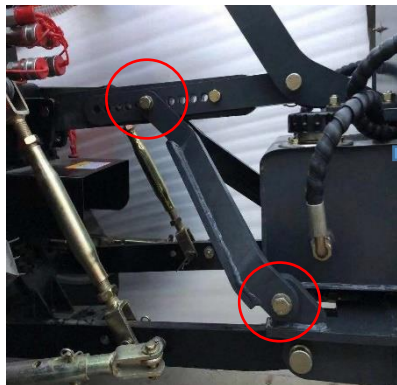


(15)



(16)

- Then install PART 2 (position limit rods) on both side of the backhoe using bolts&nuts. Refer (17)&(18). Please note the position limit rods need to be removed before lifting or pushing down the 3PL;

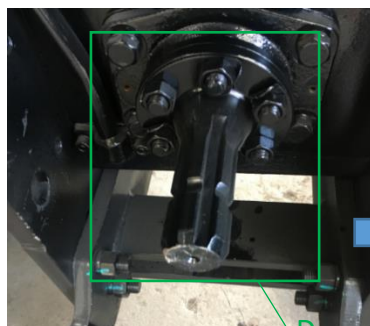


(17)



(18)

- d) Install PTO gear pump at D. Refer below (19), (20) & (21);



(19)



(20)



(21)

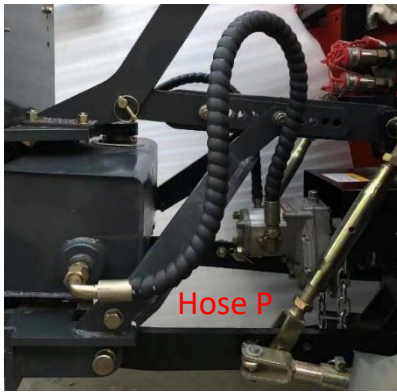


- e) Install inlet pump hose and inlet valve hose;
- Refer below (22) for the inlet pump hose (Hose P). Please note Hose P is packed separately in the steel frame. Refer **Pre-installation (c)** for the specific location of Hose P.

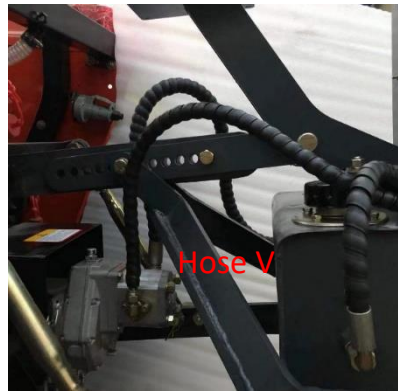


(22)

- Install inlet pump hose (Hose P) and inlet valve hose (Hose V). Refer (23) & (24). Please note the Hose V is originally connected to the backhoe;

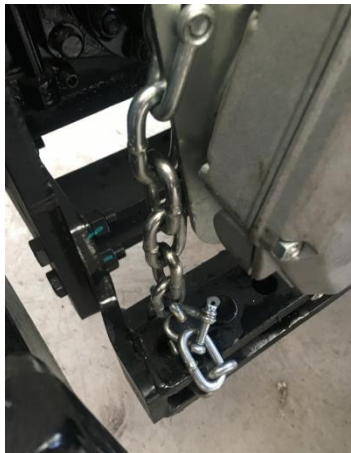


(23)



(24)

- f) Adjust the chains to tie up the gear pump. Refer (25) & (26);



(25)



(26)

- g) Add 200-250ml gear oil in the gear pump before operation backhoe.



3. Installation of backhoe seat. Refer (27) & (28).



(27)



(28)

4. Top up the hydraulic oil and lubricate all grease fittings and pivot points before operating backhoe.

5. Pictures of Installed Backhoe & Accessories

