

# LANGLEY QUILTERS' GUILD GAZETTE

## October 2019

### From the President



Hello Everyone,

Today I would like to touch on the subject of Procrastination:

I am the Queen of procrastination. I have been known to finally pack my suitcase, for a long planned vacation, at 2 am in the morning. Finish Round Robin quilts at 4 am in the morning. This year alone I recall at least 3 late night ( early morning) sewing sessions....while promising myself never to do this again. Only to promptly, yet again, wait to the last minute to complete another deadline.

I have a million and one excuses not to do something. Why make that phone call today when it is much easier to delay it to let's say Monday morning. On Monday morning, I realize it might be better not to call at all as the office staff might be grumpy....being a Monday. On Tuesday it continues and so on and so on. And before I realize it weeks have passed and deadlines have been missed.

So do not do as I do! Get yourself in gear, quilt and fill out the 2020 LQG Quilt Show Registration form.

Ina #494

### Meeting Reminders

#### **Sit and Stitch**

October 9

10:00 am – 10:00 pm

Guild Meeting

October 23

**Day:** Coffee at 10:30 am  
Meeting: Noon – 3:00

**Eve:** Meeting 7:15 – 9:30

Sit and Stitch

October 9

10:00 am – 10:00 pm

#### **Please remember to bring:**

1. Coffee Mug
2. **Current Membership Card**
3. Fat quarter for draw
4. Show and tell items
5. Tooney for 50/50 draw

#### **Remember...**

*Please set your phone to silent while the meeting is taking place.*

*Be courteous when someone has the floor and refrain from other conversations.*

The deadline for the next newsletter

**October 20, 2019**

Please send reports, articles, tips,  
etc. to:

**[lqgnewsletter@outlook.com](mailto:lqgnewsletter@outlook.com)**

**Don't forget to open the second attachment with this newsletter e-mail - it contains the 3 new patterns for block of the month!**

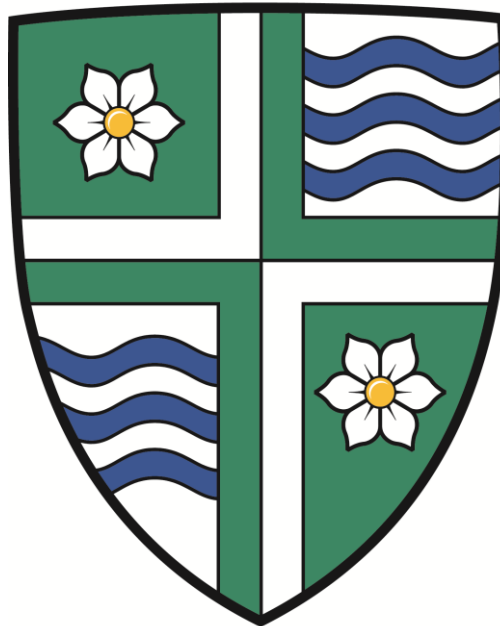
**PLEASE SUPPORT THESE DONATORS TO  
LANGLEY QUILTERS' GUILD RETREAT 2019**

- |   |                |
|---|----------------|
| A Great Notion - 19289 Langley Bypass, Surrey, BC V3S 7X4                   | (604) 575-9028 |
| A Threaded Needle - Unit #3 22206 124th Ave. Maple Ridge, BC V2X 8X1        | (604) 476-5825 |
| All Systems Computer Services (Brad Danj)s - 18966 - 69A Avenue, Surrey, BC | (604) 839-7588 |
| Castles Sewing Centre - 18543 Fraser Hwy, Surrey, BC V3S 8E7                | (604) 574-5333 |
| Dinkydog Fabrics - 19055 Airport Way #906, Pitt Meadows, BC V3Y 0G4         | (604) 459-9700 |
| Dragon Fly Quilting - 17802 66 Ave, Surrey, BC V3S 7X1                      | 1 800 663-0226 |
| Fabricana - 1348 United Blvd, Coquitlam, BC V3K 6Y2                         | (604) 524-5454 |
| Fabricland - 19700 Langley Bypass, Langley City, BC V3A 7B1                 | (604) 533-0821 |
| Hamel's Fabric & Quilting - 5843 Lickman Road, Chilliwack, BC V2R 4B5       | (604) 846-4350 |
| Home Depot - 6550 - 200 Street, Langley                                     | (604) 514-1788 |
| Joanne Reagh - 4455 222A Street, Langley, BC V2Z 1M1                        | (604) 530-2816 |
| Langley Sewing & Vacuum - 6039 196 St. Unit 107, Surrey, BC V3S 7X4         | (604) 533-3577 |
| Lazy One (Lago) Langley - 101-19652-86th Street, Surrey, BC                 | (604) 888-2772 |
| Lynne Johnson - 3455 147A Street, Surrey, BC V4P 0A6                        | (604) 541-3622 |
| N. Jefferson Ltd. - 3188 Thunderbird Crescent, Burnaby, BC V5A 3G4          | (604) 873-4641 |
| Overseas Fabrics - 32853 Ventura Ave., Abbotsford, BC V2S 6A3               | (604) 864-8100 |
| Pumpkin Patch Quilting - 5753 Kathleen Drive, Sardis, BC V2R 3Y8            | (604) 701-9788 |
| Quilter's Dream Fabrics - 2726 W. 38th Avenue, Vancouver, BC V6N 2W9        | (604) 250-8698 |
| Rona - 20350 Langley Bypass, Langley  | (778) 777-5540 |
| Silly Moon Quilting Company   | (604) 302-8580 |
| Starbucks Clayton Crossing - 18737 Fraser Hwy, Surrey                       | (604) 575-7800 |
| Starbucks Langley - 20015 Langley Bypass, Langley                           | (604) 515-2315 |
| The Cloth Shop - 1551 Johnston St. #104, Vancouver, BC V6H 3R9              | (604) 224-1325 |
| Toews Sewing - 2518A Clearbrook Rd, Abbotsford, BC V2T 2Y2                  | (604) 670-7284 |
| Tom's Sewing - 8338 120 St #102, Surrey, BC V3W 3N4                         | (604) 507-2841 |
| Wineberys - online shop   | (800) 803-8991 |
| <b>OUT OF LOWER MAINLAND</b>  |                |
| Cherry Tree Quilts - 9908 Main St. Summerland, BC V9H 1Z0                   | (250) 494-1314 |
| Cottage Quilting Ltd. - 2000 Spall Road, Kelowna, BC V1Y 9P6                | (250) 860-1120 |
| Fibre Expressions Quilt Shop - 5647 Cowrie St. #1, Sechelt, BC V0N 3A0      | (604) 885-6677 |
| Poppin's Quilt Parlour - 350 Main St. Penticton, BC V2A 5C3                 | (250) 493-1815 |



**17802B 66 Ave Surrey BC  
(Hours Monday - Friday 8am - 4pm)  
604.575.8660**

# Township of Langley



**Est. 1873**

The Langley Quilters' Guild gratefully acknowledges the Township of Langley's support for the guild's Biennial Quilt Show



**Sometimes the grass is greener on the other side because it's fake.**



## Program and Between



1. All Between and/or Workshop fees are non-refundable.
2. If you are not able to attend, it is up to you to find someone who can replace you in the class and to work out your own financial transaction for registration fee compensation.
3. If a Between or Workshop is cancelled by Langley Quilt Guild, the Treasurer will issue you a refund.
4. Consideration for a refund may be issued on an individual basis for extraordinary circumstances.

Program for October 23

**Carola Russell**

**My Favourite Things**

Between for October 23

**\$15.00**

**Carola Russell**

**Mini Mosaic**

October 24, 2019

**\$70.00**

**Carola Russell**

**Free Motion Sketching and Doodling**

*More details and pictures for this workshop can be found in the previous newsletter*



Program for November 27

**Lorna Shapiro**

**Designing Your Own Quilts**

Between for November 27

**\$15.00**

**Lorna Shapiro**

**Inserting Circles/Rectangles – free form curves**



Lorna finds it useful to insert circles, squares and rectangles into her quilt top designs. You can do it too – She will show you how!

## Just For You..

This quilt is made of cloth and thread  
To place upon your little bed  
It's not an heirloom just to keep  
But to lie upon as you count sheep

Or perhaps the floors the perfect place  
For a doll or teddy picnic place  
This quilt can be anything you dream  
From Superman's cape to the robe of a queen

Pretend it's a raft adrift a sea  
Or just to cuddle up when you watch TV  
So use it up and wear it out  
I promise I won't yell or pout

Just tell me when its days are through  
And I'll make another one just for you.

~Author Unknown~

Thanks Penny C-K



mileysdiscountquilts.com

Langley Guild Members get 10% off everyday  
Use code : Langley10

Lorna Jackson  
6047862515

mileyboy@icloud.com

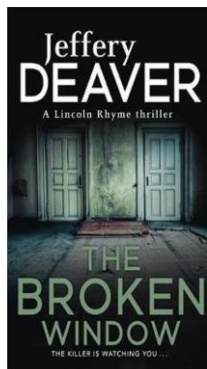
## Book of the Month "Club"

*Here is another book for you to enjoy. Remember, anyone is welcome to suggest books that others might enjoy. If you wish to add your book to the "club", just e-mail your recommendation, along with what type of story it is, a very brief teaser, and maybe why you liked the book. For fun, you can even give your book a rating based on five thimbles.*

The Broken Window

by

Jeffery Deaver



Jeffery Deaver is one of my favourite mystery authors and he has several books that feature Lincoln Rhyme, a quadriplegic detective and his sidekick, Amelia Sachs. This particular murder comes to Lincoln's attention when it involves his estranged cousin. The evidence is too perfect. Lincoln has to figure out how a killer is using the personal information found in cyberspace to perpetuate his crimes. The story gives a whole new meaning to "stolen identity"



Submitted by: Joey Wood #342

# Membership

## Emails to contact us:

President: Ina  
[ispinks@telus.net](mailto:ispinks@telus.net)

Website: Rosalie or April  
[info@langleyquiltersguild.com](mailto:info@langleyquiltersguild.com)

Newsletter: April  
[lqgnewsletter@outlook.com](mailto:lqgnewsletter@outlook.com)

Sunshine day: Penny  
[pchankent@gmail.com](mailto:pchankent@gmail.com)

Sunshine evening: Melanie  
[sojacmel2@gmail.com](mailto:sojacmel2@gmail.com)

Publicity: Kim  
[kimemmett@gmail.com](mailto:kimemmett@gmail.com)

## Sunshine Committee

Knowing that someone cares can really make a person's day brighter. If You know someone who Could use a card for the LQG, please contact the Sunshine Committee by phone or email.

**DAY:** Penny Chan-Kent

**EVENING:** Melanie Dyke



Marion I. #523

Marilyn A. #642

Michelle G. #645

Karine B. #648



Michelle A. #95

Joey W. #342

Sue A. #531

We have

**234**

Active Members



**BIGGY QUILTS**

Computerized Quilting Service

Joan Biggar

604-533-4540

[biggyq@telus.net](mailto:biggyq@telus.net)

Ladies: Get your quilt tops done.  
It's time for some new fabric



# ★HAPPY★ BIRTHDAY!



## Oct. Birthdays

482 Judy A.  
17 Sallie A.  
265 Margaret B.  
90 Maureen C.  
505 Judy D.  
262 Norma F.  
584 Lois H.  
364 Sue H.  
460 Linda J.  
583 Joyce L.  
633 Anna L.  
3 Sylvia O.  
205 Denise P.  
88 Diana P.  
40 Rita R.  
291 Kathie R.  
360 Joan T.  
336 Juliet T.  
490 Susan W.  
482 Judy W.

## Nov. Birthdays

312 Linda A.  
299 Barbara B.  
558 Barbara C.  
323 Barbara C.  
627 Helga H.  
367 Yvonne J.  
5 Liz J.  
30 Yvonne M.  
161 Leslie M.  
412 Diana R.  
11 Freda R.  
632 Judy R.  
563 Anne S.  
343 Pam S.  
542 Karen W.

## Hospitality



Marie F. #596

Linda E. #72

Pat L. #305

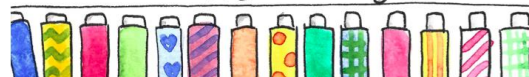
Georgina M. #452

Cheryl C. #532

*Thanks for the  
wonderful treats at  
the meeting ladies!*



*happy birthday!*





**The Langley Quilters' Guild**  
presents

**2020 Quilt Show**

*The Threads that Bind Us*

<b>Friday</b>	<b>May 8</b>	<b>10am—6pm</b>
<b>Saturday</b>	<b>May 9</b>	<b>10am—5pm</b>

<b>Over 300 quilts</b>	<b>Merchant Mall</b>
<b>Quilt Raffle</b>	<b>Tea Room</b>
<b>Art Quilts</b>	<b>Gift Shop</b>
<b>Traditional Quilts</b>	<b>Krazy Raffle</b>

George Preston Rec Centre - 20699 42 Ave Langley  
Wheelchair Accessible Ample Parking

**Admission \$7.00**





# LANGLEY QUILTERS' GUILD

'The Threads That Bind Us' Quilt Show May 8 – 9, 2020

Entry #:

Date Rec'd:

Name: \_\_\_\_\_ Membership #: \_\_\_\_\_

Quilt Item #: \_\_\_\_\_

(Item # will indicate priority if more than one item being submitted. Submit a form for each item entered.)

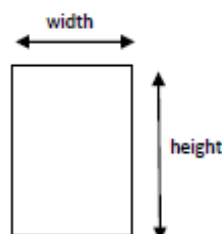
Name of Quilt: \_\_\_\_\_

Quilt Dimensions: Width: \_\_\_\_\_ inches Height: \_\_\_\_\_ inches. (Please measure accurately.)

Pattern Name: \_\_\_\_\_

Pattern Designer: \_\_\_\_\_

Quilted by: \_\_\_\_\_



Technique: (Pick 1 predominant technique)  Pieced  Paper Pieced  Appliqued  Embroidered  Art

DESCRIPTION OF ITEM: Provide a description or story (70 words or less) that will be displayed and of interest to viewers. Use the back of page if more space needed. The committee reserves the right to edit.

\_\_\_\_\_  
\_\_\_\_\_  
\_\_\_\_\_  
\_\_\_\_\_

If you wish to mark your quilt "For Sale": Price: \_\_\_\_\_ (includes 15% Guild commission)

QUILT PHOTO: Attach a colour photo of your quilt to your registration form OR email a jpg of your quilt to lswata@gmail.com. Include your name, membership # and the name of the quilt. *Photos will not be returned.* Entries will not be accepted without a photograph.

ENTRY LIMITS: 5 quilts guaranteed. Of these 5 quilts, maximum 2 large (queen/king size bed). If you submit more than 5 quilts, there is no guarantee that all will be displayed.

DEADLINE: Please return this form along with the colour photo by the March guild meeting (March 25, 2020). Late entries will not be accepted.

I have been a member of LQG for the 6 months prior to the Show and agree to abide by the rules and decisions of the show committee. I understand that the Guild will take precautions to protect my entry but cannot be held responsible for events beyond its control. You have my permission to photograph the entry and use the photo for event-related publicity and/or promotion both before and after the show, including use on the website. I certify that I have made full and truthful disclosure regarding this quilt.

Signed: \_\_\_\_\_ Date: \_\_\_\_\_

Any questions contact Louise Watanabe (Hanging Committee Chair) at 778-389-3230 or lswata@gmail.com. This form can be downloaded from the website.

# OCTOBER DAY FAT QUARTERS

## BIRDS AND SPOOKY FABRIC

### SONG TITLE - BLACKBIRD



The Beatles song, Blackbird, was released in 1968. Blackbird singing in the dead of night, brought spooky thoughts to mind.

You have quite a range of fabrics this month. We're including bird fabrics and Halloween fabrics.

Let's see lots of entries.

Good luck!



See next page for a handy cutting chart for fat quarters!

The Following chart was reprinted with permission by The Gourmet Quilter, Susan Claire from New Zealand. I hope you find it a useful reference. Do take a look at her website and check out the you tube videos – you might find something fun from NZ!

## Fat Quarter Yard Yield Chart / Strips & Squares

Below is a chart showing how many strips or squares can be cut from a fat quarter yard. A fat quarter yard usually measures 18" by approx. 22" (half the width of the fabric, generally approx. 44" wide). For cutting purposes, we have calculated the quantities below on a piece of fabric measuring 17" by 21" (the selvedge would run along the 17" length).

Size of strip or square	No. of strips per fat quarter	Strip length	No. of squares per strip	No. of squares per fat quarter
1"	17	21"	21	357
1½"	11	21"	14	154
2"	8	21"	10	80
2½"	6	21"	8	48
3"	5	21"	7	35
3½"	4	21"	6	24
4"	4	21"	5	20
4½"	3	21"	4	12
5"	3	21"	4	12
5½"	3	21"	3	9
6"	2	21"	3	6
6½"	2	21"	3	6
7"	2	21"	3	6
7½"	2	21"	2	4
8"	2	21"	2	4
8½"	2	21"	2	4
9"	1	21"	2	2
9½"	1	21"	2	2
10"	1	21"	2	2
10½"	1	21"	2	2
11" - 17"	1	21"	1	1



# Gourmet Quilter

*...because quilting is delicious!*

[www.gourmetquilter.com](http://www.gourmetquilter.com)

SusanClaire Mayfield (the GourmetQuilter) is devoted to refined enjoyment of quilting, patchwork, applique and pattern design.

All GourmetQuilter patterns are designed by SusanClaire.

GourmetQuilter is a passionate experience so don't hold back!  
Visit us often at [www.gourmetquilter.com](http://www.gourmetquilter.com) to see the latest patterns available for purchase and download - so you get to have the fun straight away!

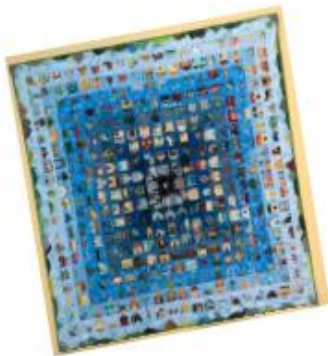
Did you know that there are lots of delicious video tutorials by GourmetQuilter?  
<https://www.youtube.com/user/GourmetQuilter>

GourmetQuilter have an email newsletter - you can sign up for that on [www.gourmetquilter.com](http://www.gourmetquilter.com) to see what is happening.

But wait, there's more - online fun with Block of the Day, What's in the Box Mysteries.....  
so many things to whet your appetite.

Home of That Town and Country Quilt book and the Around Town fabrics  
(by Hoffman Fabrics) that were inspired by the quilt.

Where will it end, who knows? Come and join in some delicious fun as you quilt.



© SusanClaire/GourmetQuilter

[www.gourmetquilter.com](http://www.gourmetquilter.com)

Tutorials: <https://www.youtube.com/user/GourmetQuilter>

em: [susanclaire@gourmetquilter.com](mailto:susanclaire@gourmetquilter.com)



shutterstock.com • 1250222154

Do you like being the bearer of good news and interacting with local media and newspapers, distributing posters to local businesses and supervising signage on the big days???

Have a buddy to share this fun job with ... perfect!



Do you like fondling money and keeping track of someone else's spending from now until our show? The position of treasurer would suit you to a "T."

Additional help will be provided on the actual days of our show.

More great news ... both positions come with easy-to-follow "instructions" and the opportunity to play alongside a group of fun-loving gals! This is teamwork at its finest!!

Are either of these show opportunities tugging at you?

Do you have a buddy you would like to share the fun with?

Give me a call at 604-427-1547 or drop me a line at [schnootsymouse@shaw.ca](mailto:schnootsymouse@shaw.ca) we would love to welcome you aboard.

Carol MacNamara  
2020 LQG Show Chair



## The Special Project for the Evening Chapter this year is a mystery quilt.

Daytime members are welcome to pay along too, as you will work on your own quilt, there is no swapping going on this time.

The instructions I'll be giving out are for my own copyrighted pattern, so please respect the work that has gone into this, and don't share outside the Guild.

This quilt ends up at about 36" square, a good size for a table topper, wall hanging or small baby quilt.

This project is an exercise in precision piecing. Careful cutting and an accurate seam allowance are the key to success.

Have extra fabric if these are areas you need practice in!

The steps each month are not daunting, so as long as you measure the finished unit to make sure it's accurate, it will all fit together in the end.

For September, all you need to do is select your fabrics. Use good, quilt shop quality cotton.

I prefer not to wash, as the sizing in the unwashed fabric gives it more stability.

I also highly recommend the use of Best Press (or your preferred starch) before cutting.

You will need 1 meter of your feature fabric -- this will be used in the blocks and also the border.

This should be a medium scale print.

Based on the colour and value of your feature fabric, you will also need

- 0.6 m light value for background
- 0.5 m medium value, brighter or lighter than your feature fabric to contrast
- 0.6 m dark value, equal to or darker than your feature fabric

Jean Jones #58

## October Evening Fat Quarter Draw



Green is the Theme Colour for October. Hunt around for Kermit Coloured Fabrics! Enjoy the Fun!

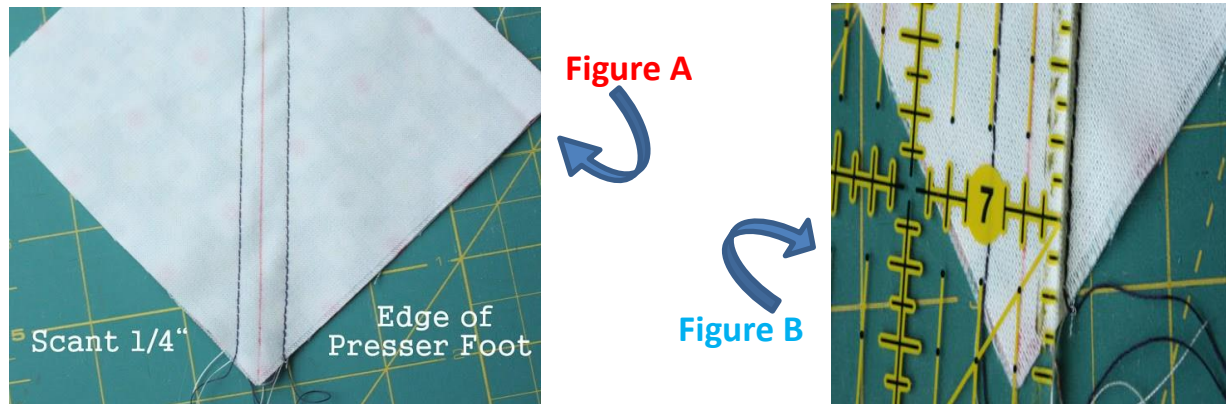
## Some Ideas for fabric colour ways for the Mystery Quilt



## Why the scant 1/4 inch is so important!

What is a "Scant 1/4 inch" and why is it important in quilting? Here is a great tip for accurate quilt piecing!

Piecing with a Scant 1/4" seam allowance can make a huge difference in the accuracy and appearance of your finished quilt. Here's what it is and why it matters.



A 1/4" seam allowance is the standard in quilting. Keeping your seam allowance consistent is an important key to good-looking quilts, but using a scant 1/4" seam is even better.

1. Typically lining up the edge of your fabric with the right side of your presser foot is a good guide for keeping your seam allowance consistent. You can buy a specific quilter's foot with a 1/4" seam allowance for your machine (newer machines may come with one) but even with a 1/4" presser foot – you need to take a closer look.
2. Above in **Figure A** are two seams on either side of a drawn line. On the right is the regular presser foot with the needle centered. On the left of the seam in **Figure A**, the needle was adjusted one space to the right still using a regular presser foot.
3. Here is the difference. On the right of the orange seam in **Figure B** you can see that the seam allowance is actually slightly bigger than 1/4" – it falls just outside the 1/4" line on the ruler. On the left of the orange seam in **Figure B**, you can see that the seam lies just slightly inside the 1/4" line. This is a scant 1/4".

The reason this makes a difference is that by the time you open up the pieces and fold one side over (when pressing seams to one side) you lose a little bit of fabric making the pieced blocks slightly smaller. Multiply that by numerous seams and a block can shrink as much as an 1/8 or 1/4 of an inch.

Measure the distance from your needle to the edge of the foot – or from the needle to the edge of the 1/4" foot. Making adjustments may be as simple as moving your needle one notch to the right. But this simple adjustment of sewing with a scant seam allowance will make a big difference in your piecing. Especially if you're piecing smaller, detailed blocks.

*A great way to measure for an accurate 1/4" is to place a piece of paper under your needle with the edge of the paper at the place on right of the foot that you are using as a guide for the 1/4". Then put the needle down through the piece of paper and take it out and measure it with a ruler. Adjust the needle left or right if able – or find a new spot on the foot to use as your reference – or place a piece of electrical tape on the machine bed.*



## *QUILT SHOWS - Local*

### Chilliwack Quilters' Guild - "Our Fabric Gems"

October 18 & 19, 2019

Fri 5-8, Sat 9-4

Chilliwack Alliance Church, 8700 Young Road

Admission \$5

raffle quilt &  
baskets/merchants'  
mall/tea room

### PACIFIC NORTHWEST QUILT & FIBER ARTS MUSEUM

703 South Second Street, La Conner, WA

11 am - 5 pm, Wednesday - Sunday

More information at: [qfamuseum.org](http://qfamuseum.org)

### "Out of Darkness" Bent Needle Collective

July 31 - October 27, 2019

"An exhibit of bold and colourful art quilts and textiles that follow the theme of emerging from a period of darkness."

### International Quilt & Fiber Arts Festival 2019 - "A quilting and fiber arts extravaganza!"

October 11 - 13, 2019

Fri & Sat 10-5, Sun 10-4

Edward D. Hansen Conference Center, 2000 Hewitt Ave, Everett, WA

Almost 350 quilt and fiber art pieces from across the US and four countries. *Lectures/classes/vendors' mall*

### Washington State Quilters Spokane Chapter - "Joyful Journey" 41st Annual Quilt Show

October 18-20, 2019

Fri & Sat 10-6, Sun 10-4

Spokane County Fair & Expo Center, Spokane, WA

- 500+ quilts/raffle quilt/boutique/50+ vendors' mall
- more info at [www.wsqSpokane.org](http://www.wsqSpokane.org)



## Mmm Chicken Pot Pie

### Ingredients:

1 lb skinless, boneless chicken breast halves - cubed  
1 cup sliced carrots  
1 cup frozen green peas  
½ cup sliced celery  
⅓ cup butter  
⅓ cup chopped onion

⅓ cup all-purpose flour  
½ teaspoon salt  
¼ teaspoon black pepper  
¼ teaspoon celery seed  
1 ¾ cups chicken broth  
⅔ cup milk  
2 (9 inch) unbaked pie crusts

### Directions:

- Preheat oven to 425 degrees F
- In a saucepan, combine chicken, carrots, peas, and celery. Add water to cover and boil for 15 minutes. Remove from heat, drain and set aside.
- In the saucepan over medium heat, cook onions in butter until soft and translucent. Stir in flour, salt, pepper, and celery seed. Slowly stir in chicken broth and milk. Simmer over medium-low heat until thick. Remove from heat and set aside.
- Place the chicken mixture in bottom pie crust. Pour hot liquid mixture over. Cover with top crust, seal edges, and cut away excess dough. Make several small slits in the top to allow steam to escape.

Dear Kitsie:

Recently I was taking my sewing tools to a class and although I thought I had put the safety lock on my rotary cutter, I was dismayed to find out that it wasn't on and I had several cuts on my project. What is a good way to avoid this type of an accident in the future? Do you have any suggestions?

Sincerely,  
Lotta Small-Pieces

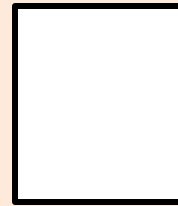


Dear Lotta:

I think at one time or another, many of us have suffered a similar tragic accident with scissors or a rotary cutter in a sewing bag. I have found that a hard-sided snap-clasp glasses case can solve this problem. These cases are readily available in thrift stores and invaluable when transporting sharp sewing tools. I have been using this idea for several years and haven't had a similar accident ever again! I hope this will solve any accidental cutting woes.

Yours "whole" heartedly,  
Kitsie

# POSTCARDS FOR CHARITY/COMMUNITY



Postcards can be oriented vertical or horizontal

Start with a 4 x 6 inch piece of Timtex (Pellon Peltex or similar stiff fabric)

Lay a 4 x 6 inch piece of batting on top and align.

Place a 5 x 7 inch piece of fabric on top of that and stitch around the outer edge of the Timtex with a running stitch to secure the batting and fabric.

Stitch your design as you desire on the top surface.

Place a 5 x 7 inch piece of muslin or white fabric to the back of the Timtex. Do not use a print fabric for this. Stitch a running stitch along the outer edge to secure the backing fabric.

Trim the excess top and back fabric to the edge stitches.

Finish off the edges with a zig zag stitch or a "E" stitch to secure the edges for a smooth look.





Canada's Largest Online Quilt Shop

**www.hamelsfabrics.com**

- Fabrics
- Books
- Patterns
- Notions
- Quilting Kits
- Quilting Clubs
- Block of the Months

**FREE SHIPPING!**  
Canadian orders over \$149



Toll Free Order Line : **1-877-774-2635**  
Email: **info@hamelsfabrics.com**  
5843 Lickman Rd., Chilliwack, BC V2R 4B5

### A Hand Knit Lace Fence?

This beautiful and imaginative creation is the work of Anne Eunson of Hamnavoe, Burra - in the Shetland Islands. Anne loves lace knitting, and how better to express that affection than by completely wrapping one's garden up in Shetland lace? The fence is fashioned from strong black twine (the same kind that is used to make fishing nets) and Anne knitted it up on specially adapted curtain poles. It took her about three weeks to knit enough lace to surround her front garden, using a 23 stitch repeat of a familiar Shetland lace pattern.



### From the Editor

Hard to believe just how fast the month of September has flown by. Seems that the kids were just getting ready to start back to school and now they are finished the first month.

Fall has arrived with darker mornings and fewer daylight hours. The wetter weather makes it easy to stay inside and sew. Perhaps while being comforted by the aroma a pot of soup simmering on the stove or a stew in the oven.

I notice that my bird feeders are busy with the migrating song birds eating their fill before they head off on their autumn journeys.

How lucky we are to live where there are 4 distinct seasons. I enjoy each one. There are times, I confess, that I am anxious to get to the next change before Mother Nature is ready...but the next season will inevitably come.

So, for now - the sewing machine is out and ready, the root vegetables are in the fridge or cupboard and waiting for the pot of soup or stew, the garden is put away, the spring bulbs are planted and I am happily anticipating the beautiful fall leaves swirling and twirling about.

~Ed