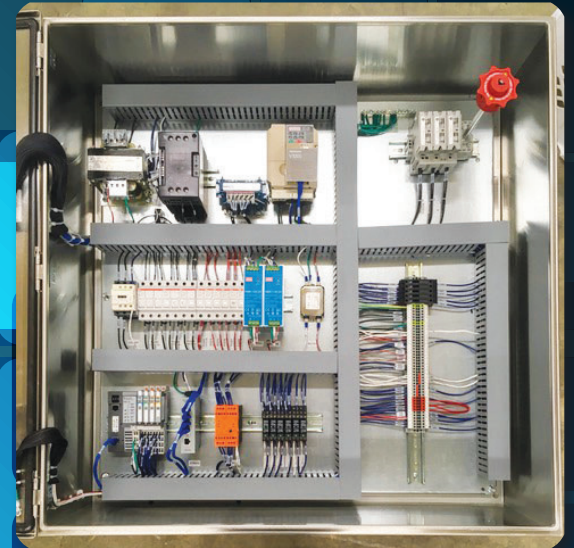


Controls that work for you.

GAINCONTROL, LLC

1070 E Glenbrook Dr., STE. 1
Pulaski, WI 54162
Office: 920-822-5202



Engineering Solutions

- Controls Integration
- Controls Updates/Upgrades
- Design and Drafting
- Startup and Support
- Motor Sizing/
Line Speed Control
- Prototyping

Panel Building

- Design – Draft – Build
- Meet/Exceed NFPA79 Specifications
- Guidance/Help meeting required certifications

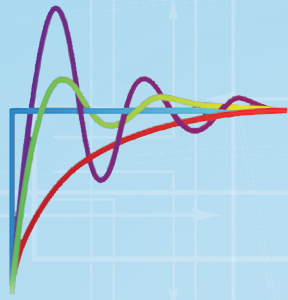
Electrical Component Sales

- Our buying power works for you – we can provide all your electrical components
- We help with ordering the right parts the first time

Vendor-Managed Inventory

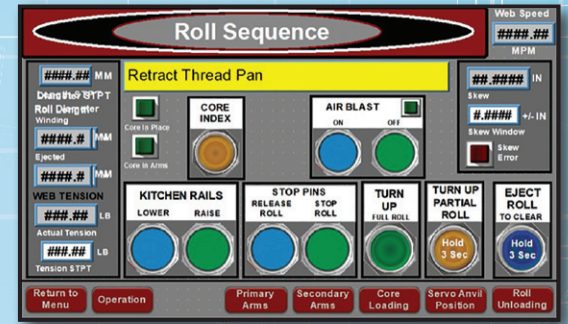
- We manage your stock in your own facility - saving you time and money

gain-control.co



GAINCONTROL, LLC

Large Scale Engineering Solutions



Controls Integration

We combine hardware and software from multiple manufacturers into a single solution, with the specific goals of energy efficiency, waste reduction, and higher productivity. This leads to increased quality, accuracy, and improved employee satisfaction and control. Data generated by the integrated controls can be used to develop leaner operational processes.

Who needs this?

- An equipment builder or fabricator in need of controls for new equipment
- Manufacturers looking to automate a machine or complete production line
- Companies that want to take charge of all systems and make them work together

Controls Upgrades

- Replace inefficient drive systems with separate, coordinated servo or VFD controls
- Stay ahead of electrical control obsolescence – when a breakdown happens, it is too late
- Add Human Machine Interface (HMI) capability to reduce training time, fine-tune machine response to commands and increase productivity.

Who needs this?

- An equipment builder or fabricator that wants to expand their product line, or add HMI's on existing machines
- Manufacturers looking to automate a machine or complete production line
- Companies that cannot afford an extended shutdown due to electrical control obsolescence

Design and Drafting

Involving us early in the development stage will result in an expanded feature set, increased efficiency, less components, and higher reliability. We work with your staff to understand the machines capabilities, how operators will run it, and any safety concerns with its operation. With that knowledge, we can size motors, choose appropriate controls, plan how operators will interface with it, and incorporate into the design the highest amount of safety, reliability, and efficiency, while staying within budget.

Who needs this?

- An equipment builder or fabricator who wants to do what they do best – build machines
- Manufacturers looking to automate a machine or complete production line

Startup and Support

Startup is always an exciting time and we will be there for you. During the allotted time, we will be working with your staff to rapidly get the machine working at/above its specifications.

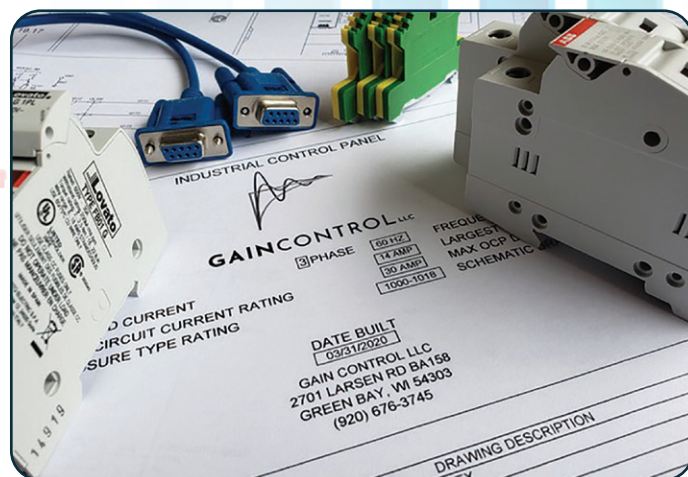
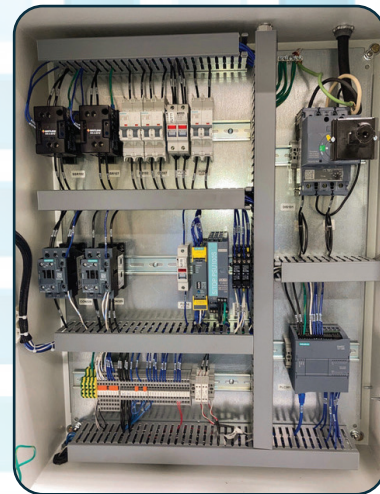
“We Want to be Your “On-staff” Engineer!”

“On-Staff” Engineering

This service is for those who need the services of an electrical engineer, but not frequently enough to justify hiring one. We have considered all aspects of “on-staff” engineering and have incorporated them into a workflow that is as seamless as if the engineer were sitting in an office across the hall from you.

What we can provide:

- Experience - 20+ years in all aspects of electrical controls
- R & D - Involving us early will result in an expanded feature set, increased efficiency, less components, and higher reliability.
- Design - We can size motors, choose appropriate controls, plan how operators will interface with it, and design in the highest amount of safety, reliability, and efficiency.
- Drafting – We create professionally prepared “line smart” electrical schematics.
- Prototyping – Our network of print farms and metal fabricators would love to turn your job into a reality.
- Panel Building – From multi-door cabinets to small, machine-mounted enclosures, no job is too big or small for us to efficiently build for you.



Electrical Component Sales

Consolidate your electrical component purchases -

We can streamline your purchasing process and save you money at the same time.

Why consolidate?

- Our extremely competitive purchasing agreements will help you save on parts
- One order through us could include parts from multiple vendors
- We source multiple vendors for stock to avoid back orders
- Our expertise can get you the right part the first time

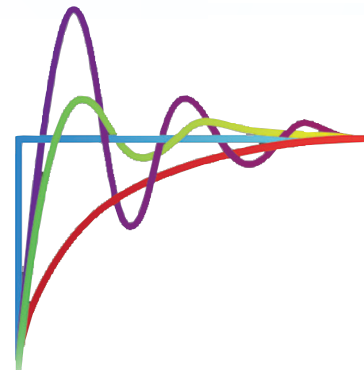
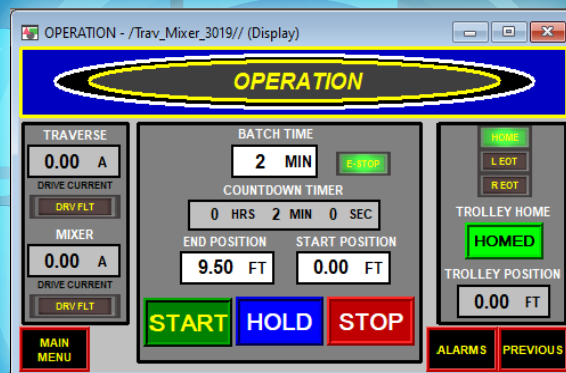
Vendor-Managed Inventory

Vendor Managed Inventory (VMI) is the process where we manage your inventory at your location.

Benefits of VMI

- Reduce/eliminate downtime waiting for parts
- You maintain a smaller inventory
- One invoice covers multiple vendors
- Weekly visits keep us at your fingertips
- We source multiple vendors to avoid back orders
- Frees your staff to work instead of maintaining inventory
- We can even stock many of your non-electrical items

Controls that work for you.



1070 E Glenbrook Dr., STE. 1 • Pulaski, WI 54162
Office: 920-822-5202 • gain-control.co

GAINCONTROL, LLC