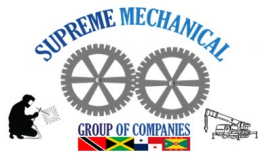




Mr. Christopher A. Gordon
CEO

Mr. Kellon A.C. Gordon
Director/Operations Manager

SUPREME MECHANICAL COMPANY LIMITED
COMPANY PROFILE



COMPANY PROFILE

Contents

Our Parent Company

Mission Statement, Core Values and Objectives

Our Long-Term Strategy Solution & Implementation

Health, Safety and Environment

Quality Assurance/Quality Control (QA/QC)

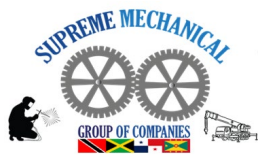
Fundamentals

Organization Structure

Achievements

Project Experience

Equipment Listing



COMPANY PROFILE

Our Parent Company

Supreme Mechanical Company Limited hereinafter called SMCL was founded in June 08, 2006 by Mr. Christopher A. Gordon. Mr. Gordon is a former Construction Superintendent with over 30 years' experience in the engineering and construction industry internationally. Supreme Mechanical S.A (SMSA) was formed in Panama May 23, 2012 as a branch of SMCL subsequently. SMCL is also registered in Grenada to carry out mechanical works, civil engineering works, pipe laying, steel fabrication and tank erection to list a few.

SMCL was incorporated in Trinidad and Tobago in 2015 and would love the opportunity to partner with your organization to provide supporting services.

SMCL has provided services to many of the leading Companies in Jamaica such as Petrojam Ltd, National Water Commission, Jamalco, Caribbean Cement Company Limited/CEMEX, Nestle Jamaica Ltd., Windalco/UC Rusal Alumina Jamaica Ltd. and the Jamaica Public Service Company Ltd.

SMCL has also executed major projects for international companies such as China Harbour Engineering, Kier Infrastructure and Overseas Ltd., CBI, Tarsco Inc., Common Wealth Dynamics and Hansa Meyer Global Transport USA, LLC.

We have the competitive advantage to serve various industries as we own the necessary equipments and have a pool of resources with solid years of experience and expertise to undertake any project regarding Construction and Industrial/ Civil Engineering Works. In addition to our resources, we have revolving credit facilities with our bankers to finance any project. Experienced, success-driven consultants are readily available to assist SMCL with any consultation that may be required in the execution of a complex project.

The CEO has over thirty years' experience in the engineering and construction industry both locally and internationally. The Operations Manager has over thirteen years' experience in the industrial management field. The Chief Estimator possesses over thirty years of experience in his profession and has worked on numerous civil/structural, piping and mechanical projects throughout Jamaica. Consultants are equipped with over thirty years' experience in Mechanical Designing and specialties in Equipment Maintenance.

Our staffing also includes a variety of certified welders, fitters and riggers, an abrasive blasting team which include painters.

Mr. Christopher Gordon – 30 Years' Experience



<=

*Trinidad – Erection & Installation of
Nuclear Reactor*

1992-1994

=>

*Panama – Floating Roof and Bottom
Replacement*

1995-1998



<=

Columbia – Butane Gas Tank

2001-2003

Our Mission Statement

To ensure and maintain the highest level of quality services, professionalism, integrity, honesty and longevity through our committed relationships with our suppliers, subcontractors, professional associates, employees and procuring entities.

Core Values: DISAE

-Diversity

-Integrity

-Service

-Autonomy

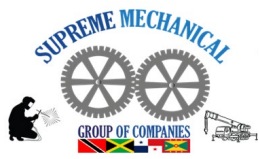
-Enthusiasm

Our Objectives

To ensure and maintain the highest level of professionalism, integrity, and longevity through our committed relationships with our clients, suppliers, professional associates, subcontractors and employees by providing world class Industrial Infrastructure services, not only in Jamaica but also in the Republic of Panama, Trinidad & Tobago and Grenada.

Our Long-Term Strategy Solution & Implementation

- *Lean operations*
- *Five Ps: Purpose, Point of entry, Project management, Participation*
- *Controlling pure and speculative; Prevention strategies, mitigating strategies, recovery strategies*
- *Six Sigma*
- *Enterprise Resource Planning (ERP)*
- *Delivering performance - safety, timely schedule completion within budget, quality and reliability*



COMPANY PROFILE

Civil Engineering

Experienced professionals who are trained and excel at the provision and implementation of solutions to our clients.

Mechanical Works

Versatile team members and machinery equipped for the successful installation of mechanical parts and automated systems.

Pipe Laying

Our Skilled Pipelayers (Pipe fitters / welders) partake in creating the infrastructure for our Clients' projects.

Steel Fabrication and Tank Erection

We have the competent resources and equipment for tank erection, tank assembly and vessel equipment installation.

Blasting and Painting

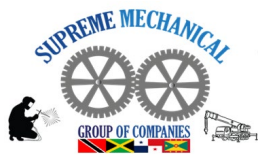
We offer a pool of capable blasters and painters to get the job done.

Equipment Rental

A range of equipment is offered to our Clients to aid in achieving their milestones.

Plants and Facilities, Repairs & Maintenance

- *Site development*
- *Industrial cleaning*
- *Heavy Rigging*
- *Civil works*
- *Turnkey plant construction*
- *Structural steel fabrication/erection*
- *Mechanical works*
- *Pipe Laying*
- *Equipment installation*
- *Emergency response*
- *Supply small tools*
- *Boiler tube repairs*



COMPANY PROFILE

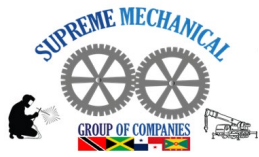
Health, Safety and Environment

The purpose of SMCL's Environmental, Health and Safety program is to:

- Provide clients, subcontractors and staff with a safe and healthy work environment.
- Develop a safety awareness among employees and others engaged in work for SMCL so that accidents (personal injuries and property damage) and occupational illness will be reduced to a minimum.
- Complete all projects with zero accidents and incidents which may lead to property damage or loss of life or limb.
- Identify and control safety, public health, and environmental hazards associated with their operations.

Extra focus is placed on equipment operations, lifting assessments, protective wear and clothing for specified projects and waste management.

Our team leaders, supervisors and employees are all responsible for the development and implementation of proper management practices for all aspects of the handling, storage and disposal of chemical waste that is generated from our projects. Our goal is to manage chemical waste in a safe and environmentally sound and friendly manner.



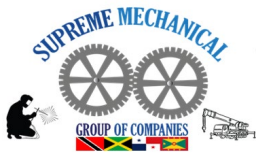
COMPANY PROFILE

Quality Assurance/Quality Control (QA/QC)

We have always recognised the importance for a standalone QA / QC department to ensure strict compliance in regard to understanding the codes and specifications for a project, the employment of qualified individuals, the procurement of materials, project schedule, required mills tests for a painted surface, cube test for concrete, specifications for machinery/equipment etc., hydro testing and NDT testing.

Continuous staff training and certification is a major focus that SMCL have always been committed to. This involves the thorough screening and testing of all certified or skilled employees at various intervals which will enable full competency in each field.

We have day to day field forms/checklist as it relates to all activities involved on a project.



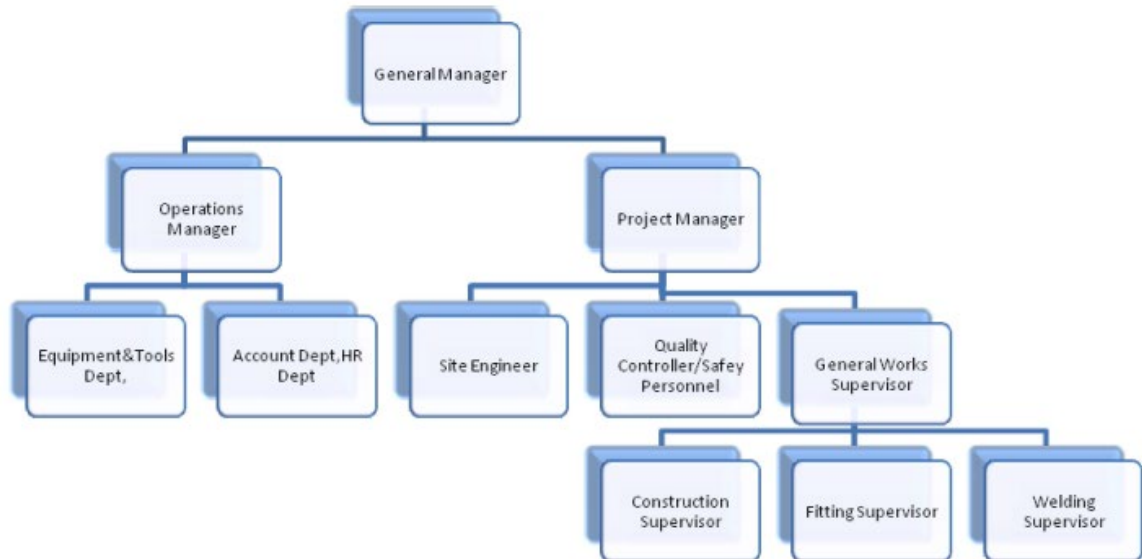
COMPANY PROFILE

Fundamentals

SMCL is a growing firm that is recognized internationally by organizations in the similar field worldwide. Our Management has contacts and support throughout the Caribbean, Latin America and North America. In keeping abreast with technology, we ensure that the company uses modern machineries and equipment to improve efficiency and productivity on the job. In the last quarter of each year, new assets are imported to ensure that the company's equipment and machineries are standardized with modern technology which also makes the company more competitive in its field. Trained personnel are certified in some cases to operate specific heavy-duty equipment and machinery. These personnel are mandated to renew their certifications at least every year.



ORGANIZATION STRUCTURE





Achievements

- 2021** Powerformer F2 Furnace Repairs - Petrojam Ltd.
- 2021** Plating of the 7890 Main Process Bag Filter Dirty Air Chamber and Repairing Holes on Exterior - Caribbean Cement Co. Ltd
- 2021** Mill #4 Horizontal Crack Repairs - Caribbean Cement Co. Ltd
- 2021** Dust Collector Hopper Repairs - Caribbean Cement Co. Ltd
- 2020** Dedusting of Belt Transfer Point Bag House Filters Phases 1 & 2 - Caribbean Cement Co. Ltd
- 2019** Repairs to 126D Tank – Jamalco
- 2019** Repairs to crude oil storage tank 118 – Tarsco Inc
- 2018** Fabrication Of Pipe Craddles, Handling, Haulage & Offloading Of Ductile Iron Pipes - China Harbour Engineering Ltd
- 2017** Structural Fabrication and Erection Of Building - Jamaica Boilers Group
- 2017** Waste Oil Tank Refurbishment - Rubis Terminal Rockfort
- 2017** Tank 1 and 2 Steam Line Installation - Petrojam Ltd.
- 2016** Procurement of 55 Metal Skips For Concrete Enclosure - Jamaica Social Investment Fund
- 2016** Montego Bay Micro LNG Terminal Mechanical Works - Hansa Meyer Global Transport USA, LLC
- 2016** Montego Bay Micro LNG Terminal Mechanical Works - Kier Infrastructure & Overseas Ltd
- 2015** Repairs to crude oil storage tank 101 and 103 #PJ2014/904 – Petrojam Ltd.
- 2014** Piping Replacement -2014 Turnaround #PJ2014/822 – Petrojam Ltd.
- 2014** Kiln Stack no.1 Replacement # 380-224-C1 - Common Wealth Dynamics
- 2014** Structural Steel Erection- Barnett Tech Park # C6147/SC/013 - Kier Infrastructure & Overseas Ltd
- 2014** NWC 26 Site Rehabilitation Programme-Installation of 7 Glass fused tanks - Kier Infrastructure & Overseas Ltd
- 2014** NWC 26 Site Rehabilitation Programme-Remove roof structure at Montgomery Corner - Kier Infrastructure & Overseas Ltd
- 2013** NWC 26 Site Rehabilitation Programme-Erection of structural steel and metal decking- Montgomery Corner - Kier Infrastructure & Overseas Ltd

Achievements (Cont'd)

2013 Windalco Kiln #3 ESP rebuild (Ewarton) - Kier Infrastructure & Overseas Ltd

2013 6.3 MW Hydroexpansion Project-Maggotty (Fabrication&Installation of steel tapers,mighta elbows,removal,refurbishment&installation of pipe bridge) - Kier Infrastructure & Overseas Ltd

2012 Mega Mart Building Structural Steel Erection - Infinite Concrete

2011 UWI Enhancement Project-The Vice Chacellery Structural Steel Erection- Kier Infrastructure & Overseas Ltd

2011 July 2010 Turnaround Corroded Piping Replacement Part 2 – Petrojam Ltd.

2011 Transport Infrastructure Rehabilitation Program,Dry River Abutment Pile Fabrication&Bridge Erection - Kier Infrastructure & Overseas Ltd

2011 Falmouth cruise ship terminal wastewater treatment plant - YP Seaton and Associates

2009 Installation of 12 inch Dia Pneumatic Pipeline - Caribbean Cement Co.Ltd

2008 Kiln 5 Expansion -Fabrication&Installation of Pipe lines,Cyclones,Preheater towers,Ducts,Cvil works,etc - Caribbean Cement Co.Ltd

2007 Kiln 5 Expansion Stack Fabrication - Tank Weld Fabrications/Caribbean Cement Co.Ltd



Project Experience

Petrojam 2007-2017 Repairs to crude oil storage tanks 101 & 103 > Tank sizes 174'-0" Diameter, 48' high.



Hansa Meyer Global – 2016 Micro LNG Terminal Freeport Montego Bay -Steel Fabrication, Mechanical Works, Equipment Rental



Common Wealth Dynamics – 2014 – Winalco Kiln 1 Stack Replacement



Project Experience (Cont'd)

Kier Construction Company Ltd - 2016 – Micro LNG Terminal Freeport Montego Bay (Mechanical Works)



Kier Construction Company - Ltd 2013 – National Water Commission 26 Facilities Upgrade – Installation of 7no. Glass Fused Tanks



Kier Construction Company - Ltd 2013 – National Water Commission 26 Facilities Upgrade – Removal of Roof Structure at Montgomery Corner (Concrete Slabs approx.. span 90ft).



Project Experience (Cont'd)

Kier Construction Company Ltd – 2013 – 6.3 MW Maggotty Hydro Expansion Project – Fabrication and Installation of Tapered Pieces.



Kier Construction Company Ltd – 2013 – 6.3 MW Maggotty Hydro Expansion Project – Installation of the New Black River Pipe Bridge



Project Experience (Cont'd)

Kier Construction Company Ltd – 2013 – 6.3 MW Maggoty Hydro Expansion Project; Shop fabrication of Pipe Bridge (46tons) – Installation of the New Black River Pipe Bridge, Ring Girders and Walkways.



Project Experience (Cont'd)

Kier Construction Company Ltd – 2013 – 6.3 MW Maggotty Hydro Expansion Project; Removal and refurbish of Black River Pipe Bridge (35 tons) – Field Fabrication of Mitered Elbows.



Denron Engineering / Infinite Concrete – 2012 – Megamart – Bloomfield Building



Project Experience (Cont'd)

YP Seaton & Associates Company Ltd – 2011 – Sewage Waste Water Treatment Bin



Kier Construction Company Ltd – 2010 – UWI Vice Chancellory Building – Structural Erection



Project Experience (Cont'd)

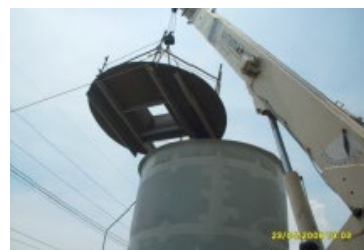
Kier Construction Company Ltd – 2010 – UWI Vice Chancellory Building

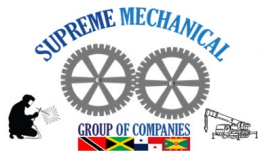


Carib Cement Company Ltd – 2007 - 2009 Rock Fort – Pneumatic Line Project



Carib Cement Company Ltd – 2007 – 2009 – Mill 5 and Kiln 5 Expansion

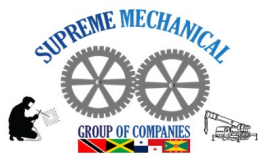




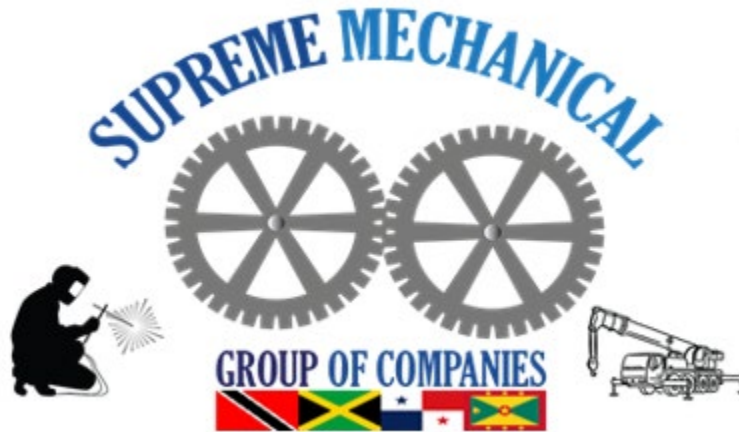
COMPANY PROFILE

Equipment Listing - 2022

- Automatic Girth Welders
- Link Belt 100 ton crane
- Kenworth tractor head with 40ft flat bed
- Clark forklift (10 ton)
- Crimper Machine
- Lathe machines
- Compressors(120GI&375I)
- Heavy duty drill press
- Horizontal band saws
- Power wash machines
- Magnetic drill presses
- Hydrostatic testing machine
- Idealarc welding plants (various sizes)
- Mig machines
- Boom truck 30 ton
- Electric generator (12500W, 22HP)
- Huck gun (H-246)
- Plasma welding plants
- Miller big blue welding plants (Various sizes:400D,500D&600D)
- LT 7 tractor
- Miller 8 pack welding plant
- Miller 6 pack welding plant
- DC655 welding machines
- LN 25 Tig machines
- SkyTrack 8042 Telehandler
- SkyJack SJ9250
- JLG 800AJ



COMPANY PROFILE



Parent Company
SMCL Jamaica
Lot No. 1, Church Pen,
Old Harbour Rd, Spanish Town
St. Catherine, Jamaica. W.I.
Tel. No.+1 (876) 773-2947
<https://www.smcljam.com>
email: kellon.gordon@smcljam.com;
smcl06@yahoo.com; info@smcljam.com

SMCL Grenada
Tel. No.+1 (876) 773-2947
<https://www.smcljam.com>
email: kellon.gordon@smcljam.com;
smcl06@yahoo.com; info@smcljam.com

SMCL Trinidad
Registered @
LP No. 53 Bush Park
Vessigny Village
La-Brea, Trinidad. W.I.
Tel. No. +1 (868) 376-9485
<https://www.smcljam.com>
email: info@smcljam.com;
kellon.gordon@smcljam.com;

SMSA Panama
Barriada El Nazareno B Casa No. 8
Colon, Panama
Tel. No.+1 (876) 773-2947
<https://www.smcljam.com>
email: kellon.gordon@smcljam.com;
smcl06@yahoo.com; info@smcljam.com