

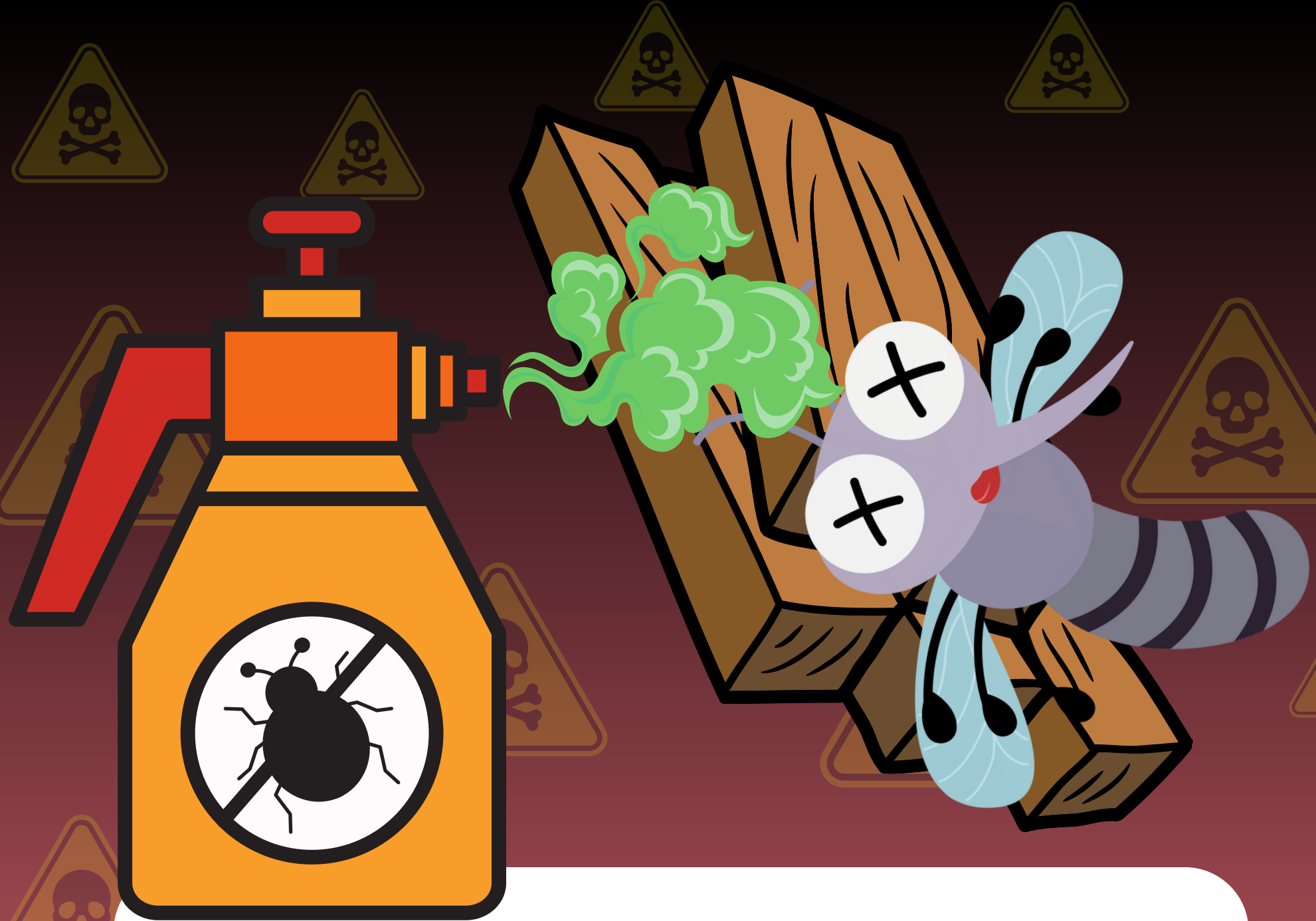
DEATH TRAPS

5 x Issues w/ Store Bought Bee Hotels



Did you know that **most commercial** bee hotels have toxic coatings and are riddled with design flaws

Here is 5 Issues with store bought bee hotels



Issue #1 – Imported

Many bee hotels sold in commercial retailers have been fumigated at customs (biosecurity) with insecticides and imported or made from treated materials, which are toxic to bees and insects.



Issue #2-Useless space

Many commercial bee hotels have useless compartments with empty space or pine cones or random pieces of wood which serve no purpose for native bees.



This drill bit is how deep each hole should be, yet is longer than both bee hotels combined!



Native bee nest

Issue #3 – Depth

Commercial bee hotel cavities are too shallow never an optimal depth (10-15cm). Native bees lay female eggs first, and shorter nesting materials will cause population imbalances.

10mm Drill bit looks
tiny in comparison

All numbered holes are
too big for native bees



Issue #4 – Diameter

Commercial bee hotel hole widths are typically too large. The best hole diameters are between 3-9mm and anything larger than this will not suit native bees.



**Native bee
specific sizes:**



9mm



8mm



7mm



6mm



5mm



4mm



3mm

Issue #5 – No Variation

The holes drilled in commercial bee hotels apart from being too shallow are usually the same dimension, and its better to have 3,4,5,6,7,8,9 mm wide holes to cater for diversity of bees.



Make Your Own

Have a go yourself, all you need is 1) hollow/pithy stems and something to tie it together or 2) some native hardwood, extra long drill bits and a drill or 3) clay, sand and a pipe/container