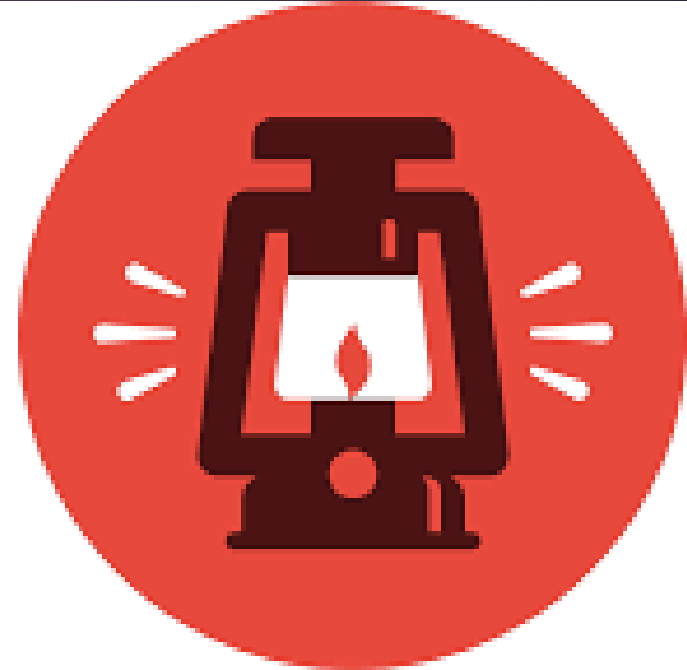


# PATHBLAZER

101 NAVIGATION GUIDE



Edgenuity

Pathblazer®

# WHAT IS PATHBLAZER

- ▶ Pathblazer is an online intervention program aligned with common core state standards that helps struggling learners up to grade-level proficiency in math and reading. The program prescribes individualized learning plans (ILPs) to bridge the gaps in for those concept learners are struggling with.

# STUDENT HOMEPAGE VIEW

1. Navigate to [www.thelearningodyssey.com](http://www.thelearningodyssey.com) and enter the **student name**, **password**, and **school name** exactly as they were provided to you into the appropriate boxes, then click the **Log In** button.

URL to get to the website

School code is: SOUACA

Messages

Courses

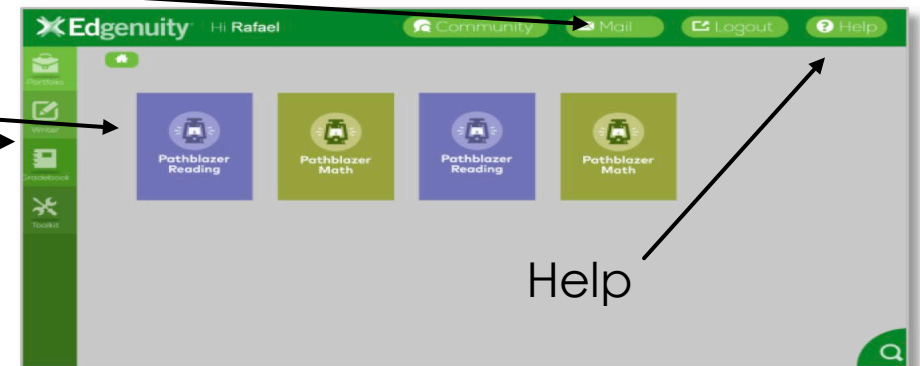
Toolbar

(includes gradebook and note taking features)

**NOTE: Please be aware of spaces and the letter O versus the number 0.**

2. Here you will see a student's homepage.

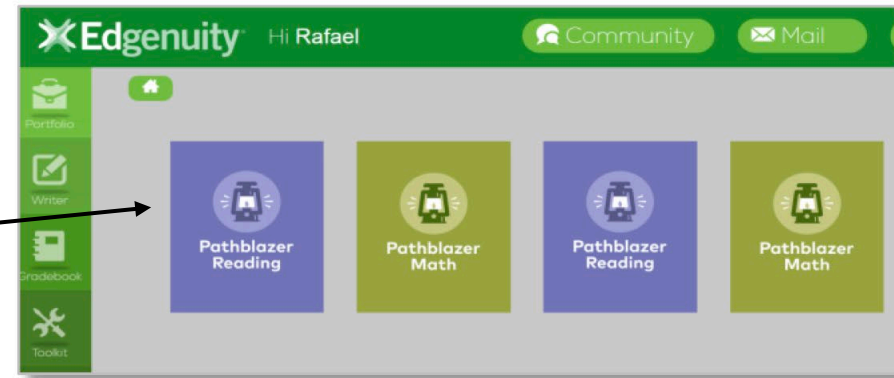
**NOTE: You have been assigned a variety of content so you can easily explore what Pathblazer has to offer you and your students. In a typical school setting, students are often assigned to one Reading and/or Math program.**



# STUDENT HOMEPAGE VIEW

3. Click on any **Pathblazer subject** button to begin your exploration.

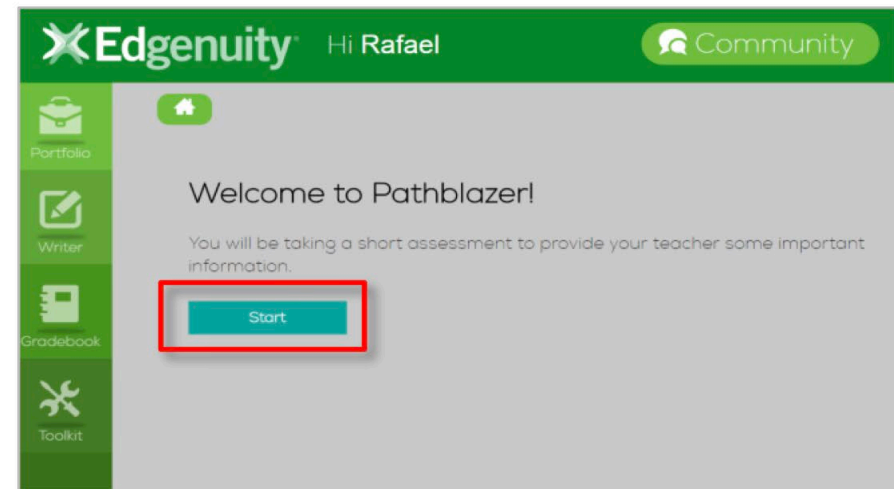
Any subject you'll be screened on will be inside of each subject



## IMPORTANT

The adaptive screener doesn't have to be completed in one sitting

4. Complete the **adaptive screener** that determines a student's highest functional performance level.





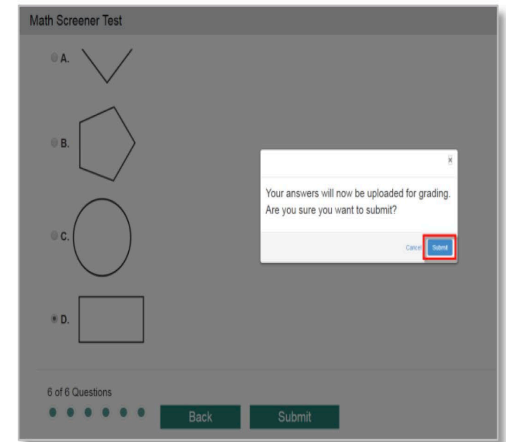
# STUDENT ADAPTIVE SCREENER VIEW

## IMPORTANT

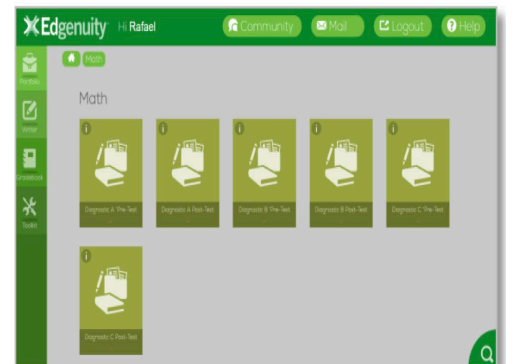
1. All work is saved if not completed in one sitting. Once you hit submit, you're unable to go back and change any answers
2. Before the student clicks stop to exit the test if they're not completing it in one sitting, they should answer any questions they've viewed but didn't already answer. If not they'll be unable to answer that question later.

5. On your last screener question, click the **submit button** in the assessment, then click the blue **Submit** button on the confirmation screen.

**NOTE:** Depending on the results, students may receive multiple screeners to hone in on their individual proficiency level.



6. After submitting the screener, students are immediately assigned proficiency-level, diagnostic assessments to determine their individual skill gaps. From the home screen, click on the Pathblazer program you selected in step 3 to complete any standards-based diagnostic assessment and submit your results for grading.



Students will see pre & post- test diagnostic scores

# STUDENT ADAPTIVE SCREENER VIEW

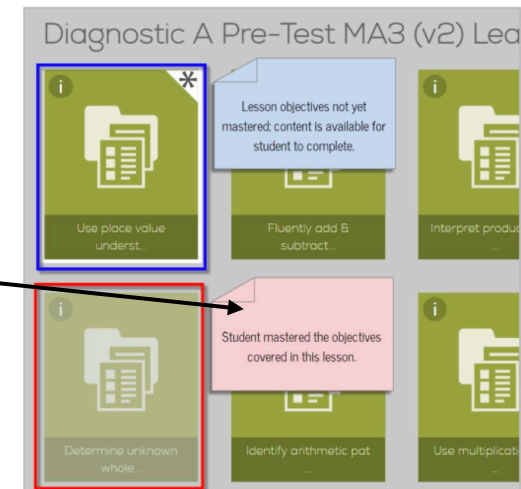
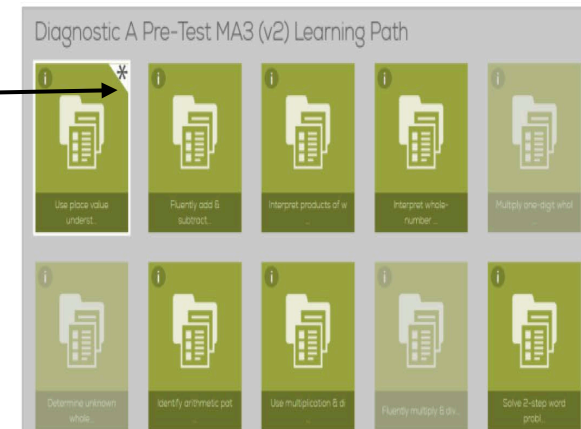
To begin working on assignments students must go in order and click the icons in the order they're listed.

Listed in blue is the lesson objective that the student is working to master. The pink is anything the student has already mastered while taking the diagnostic test.

7. After submitting the diagnostic assessment, students are assigned a personalized learning path based on the data from the diagnostic assessment.

8. Click on any **activity icon** to explore the prescribed activities. The next lesson will have a star in the upper right corner. Students must complete the lessons in order.

**NOTE: Some content will display, but is not available. Data from the diagnostic indicates those objectives were mastered, maintaining focus on only the lessons needed for intervention.**



# HELP RESOURCES

- ▶ For more help or instructional videos visit [The Edgenuity Pathblazer help center](#)
- ▶ Phone Number: 877.202.0338
- ▶ Email Address: CustomerSupport@edgenuity.com

## Hours of Operation:

- ▶ Monday–Friday: 7:30 am to 9:30 pm (EST)
- ▶ Saturday–Sunday: 9:00 am to 5:00 pm (EST)