

NATIVITY LUTHERAN CHURCH
4075 HOLLY DRIVE
PALM BEACH GARDENS, FL 33410

Address Service Requested

NON-PROFIT ORGANIZATION
U.S. POSTAGE PAID
WEST PALM BEACH, FLORIDA
PERMIT NO 168

August 2019

Sent with a prayer to:



Monday, August 12

THE NATIVITY



Carol

Vol. 55 Issue 8 August 2019

NEWSLETTER OF NATIVITY LUTHERAN CHURCH & SCHOOL
PALM BEACH GARDENS, FLORIDA

WORDS FROM

Pastor Steve

Dear Nativity Family,

As I write this for you all, we are still at camp. It has been a wonderful week of faith and community building in the name of Jesus. The following words are a few of the devotions posted to facebook for the Camp Lutherock trip. Peace...

Saturday, Departure and Sleepover in Savannah GA. at Messiah Lutheran

Today 12 kids and 5 adults of Nativity Lutheran left for a week in the mountains of North Carolina at Camp Lutherock. We are spiritually and financially blessed by many to make this trek to the woods. Thank you!!!

2nd Cor. 9:8...And God is able to provide you with every blessing in abundance, so that by always having enough of everything, you may share abundantly in every good work.

We arrived safely at our halfway-to-camp destination in Savannah GA., but not without having blessed someone ourselves along the way. Near Jacksonville we shared God's blessings upon us by blessing a man of need who called himself "Heart to Heart". After giving him a blessing bag, a few bucks and a prayer, we went our separate ways. The easy part is giving the bag. The hard part is to without human prejudice join God in bringing Eden back. The hard part is being an agent of loving change.

So, in tonight's devotion we were mindful of God's grace and blessings. We prayed for the ever-present Spirit of God to form our hearts and minds all week long to be a people of blessings. Today we blessed the face of Jesus, in a Caribbean man with locks named Heart to Heart. Heart to Heart, and in the name of Jesus Christ from whom all blessings flow, a bit of the work of God came to be, a corner of Eden had new growth. All praise be to God. Brothers and Sisters in Christ, how are the blessings of Christ flowing through you?



The travelers were John, Breanne, Charlotte and Suzanne Johnsen, Shonda Staudt, Pastor, Amy, Lydia, Laurel and Mara Winsor, Caleb & Joseph Moore, Dylan & Caitlin Morrissey, Nevaeh Rogers, Sara Hoekstra and Steven Karlik.

Sunday, Day 1 of Camp Lutherock 2019

We got to Camp! On Sunday at 3:30 p.m. we arrived at camp brimming with anticipation. As we climbed higher into the mountains, so did our spirits. On the drive up to camp, we were holding "Flat Jesus" and a sign to the van window that read "Honk for Jesus". According to our data we received a total of 9 honks, many thumbs up and even more smiles! This little exercise of fun and levity brought joy to our van and many other travelers.



We arrived at camp just in time to enjoy an hour-long hailstorm! The next couple hours was us handing kids off to counselors, collecting their phones for the week, dinner and campfire with skits, song and worship. Turns out we are up here at the same time as Grandparents retreat (grandkids, grandparents and God). It's a full house, to say the least. A house full of love.

This week we are hopeful to experience, and bring a dose of Christ

OUR *Staff*

Pastor:
Pastor Steve Winsor
swinsor73@gmail.com
(727)542-0287

School Director:
Pia Heiser
pia@pbnativity.com

Office Manager:
Kari Donnelly
kari@pbnativity.com
Cell: 676-7361

Music Director:
John Shepherd
jsmus19@aol.com
Cell: 267-6542

Teachers:
Dianne Seker, VPK
& Extended Care
Lauren Oliveri, PreK
& Early Care
Theresa Saccone, Teacher Asst.
Sarah Kasher, Teacher Asst.



God's work...

...Our hands

OUR *Council*

President: Kelly Rogers
267-1725
kellyrogers379@aol.com

Vice-President: Earl Osborne
614-937-3392
ewosbor@gmail.com

Treasurer: Carlyne New
561-236-5401
csnew1950@aol.com

Secretary: Breanne Johnsen
561-972-7036
Breannek.ot@gmail.com

Council Members at Large:
Julius Roehl
561-493-8873
talkingturkey2@gmail.com

Jenelle Smith
247-3315
chadandjenelle@gmail.com

OTHER CHURCH *Leaders*

Prayer Chain: Sandy McClellan

S.O.A.P. (kids' group):
Mark & Sharon Glazener

Women's Ministry: Ceil Thomas

DAYS TO Celebrate

HAPPY BIRTHDAY TO:

8/3	Dana Burnett	8/19	Emma-Jade Cantrell
8/4	Sandy McClellan	8/20	Earl Osborne
8/7	Brain Donnelly	8/21	David Willoughby
8/7	Ethan Ford	8/25	Carolyn Schwartz
8/8	Evelyn Bloor	8/26	Shonda Staudt
8/8	Hazel Smith	8/30	Diane Lynch
8/8	Fred Zivot		
8/10	Jim Guretzky		
8/10	Mary Winsor		
8/11	Jim Johnson		
8/12	Charlotte Johnsen		
8/13	Caleb Ellis		
8/14	Lois Erickson		



HAPPY ANNIVERSARY TO:

8/6	Jane & Michael Keith
8/13	Steven & Shonda Staudt
8/24	Jim & Betsy Johnson
8/28	Anthony & Bea Greenall
8/30	Jim & Leigh Clark



If you would like to share your birthday and/or anniversary with the church, please send your information to kari@pbnativity.com.

-like love to one another. This week is about building intentional peaceful community. In a day and age where its culturally and politically in vogue to be divisive and discordant, here at camp it's a much different story. Here at camp we are planting seeds of harmony, unity in the midst of diversity. May our God of peace and reconciliation in Jesus Christ work peace, joy and love through you.

Tuesday, Day 3 of Camp Lutherock 2019

Isaiah 25:1...Lord, you are my God; I will exalt you and praise your name, for in perfect faithfulness you have done wonderful things, things planned long ago.

On this day the rain of the previous two days gave way to a cool afternoon with partly sunny skies (thank you Lord!) We worshipped under a pavilion, sitting on the floor of a crowded room, along a path, and on clearing overlooking a mountain valley.

After dinner the entire camp walked in the footsteps of Jesus as the camp counselors acted out His life, death and resurrection. It was followed by worship with communion. As always, it was beautiful. The singing, the praying, arms around one another swaying, worship is key to a faith life. Worship is so much more than just what we do on Sunday. It can be anything you do in the name of Jesus Christ. Worship is you and I, alone or together, engaging our faith, interacting with God through a relationship with Jesus outside of Sunday service, what practices of your day do you consider worshipful experiences?



Wednesday, Day 4 of Camp Lutherock 2019

Philippians 4:13... I can do all things through him who strengthens me.

Today the grade school kids rafted the Watauga River, and the middle/high school kids did zip-lining and high ropes/apparatus in the brand-new on-site facility called Sky Park. Rafting whitewater, zip-lining and high ropes course and apparatus climbing can be unnerving scenarios for some. Sometimes it takes courage and much needed assurance to make the move towards situations we fear, be it a zip-line, a roaring body of water, another person or ourselves. It is when we lean into the fear and apprehension that we learn how to conquer and/or deal with the circumstances in life. Many kids climbed today. Knees shaking, fear on their faces, afraid to take the step off a platform to zip through the sky or balance on a wobbly edge. But once down on the ground it was all smiles, a sense of accomplishment, and affirmation of self.

Thanks be to God for the love named Jesus, that leaned into adversity and death for us. Thanks be to God for the life of the Christ that modeled the way, for the death that paved the way, and the resurrection that gives us hope and strength to persevere in the face of life's obstacles.

Good people, go into the day knowing His Spirit guides, equips and empowers you to overcome. Amen



Thursday, Day 5 of Camp Lutherock 2019

Today the elementary school kids explored Linville Caverns and Falls. Middle and High School rafted down the Nolichucky River (pics to come). Everyone came together in the evening for a cookout, games on the lawn, home-made ice cream and song session. We ended the evening with campfire worship and

REMEMBERING THOSE WHO

Serve

- Chereck, Donovan** US Navy-S. Carolina, Nephew of Osbornes
Dodd, Chas US Army-Italy, Nephew of Lauren Molina
Duncan, Kristen USAF-Salt Lake City, UT, Friend of Glazeners
Duncan, Tyler USAF-Salt Lake City, UT, Friend of Glazeners
Fredericks, Barry Jr. US Navy-Japan, Nephew of Denise Varlik-Joseph
Glazener, Matt US Army-Missouri, Brother of Mark Glazener
Griffin, Joseph US Air Force-Azores, Nephew of Ralph & Teri Henning
Lee, Ashley Army-Afghanistan, Niece of Kathy Brockelbank
Malloy, Brian US Navy-Washington, Cousin of Matt Flynn
Malloy, Christina US Army-Hawaii, Cousin of Matt Flynn
Malloy, Jason USAF-Turkey, Cousin of Matt Flynn
Malloy, Tom USMC-N. Carolina, Cousin of Matt Flynn
Olson III, Robert A. Army-Colorado Springs, CO, Friend of the school
Pittman, Mercedes US Army-Ft. Carson, CO, Daughter of Harold & Debra Pittman
Ragland, Charles US Army-Afghanistan, Friend of Scott Powers
Scalise, Frank IV USMC-Yuma, AZ, Grandson of Dale & Sue Long
Sioson, Ernie US Air Force, Salt Lake City, UT, Brother of Ernadel Sioson

NATIVITY LUTHERAN CHURCH & SCHOOL

4075 Holly Drive
Palm Beach Gardens, Florida 33410
(561) 622-4998 or (561) 626-6652
nativity@pbnativity.com
www.nativitylutheranpbg.com

SUNDAY WORSHIP SCHEDULE

9:30 a.m.

OFFICE HOURS

Monday-Friday: 8:30 a.m. - 5:30 p.m.

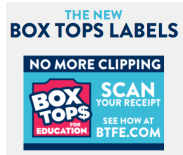


CHOIR REHEARSALS

Our men's choir rehearsals have begun. They rehearse immediately following worship on Sundays at 10:30 a.m. The Bell Choir will resume their rehearsals, Sunday, September 10th at 11:15 a.m. The adult choir will begin Tuesday, September 12th at 6:30 p.m. If you are interested in joining any of these choirs, please talk to our music director John Shepherd.

BOX TOPS FOR EDUCATION

Traditional Box Tops clips are being phased out of production, but may continue to be found on many products throughout the store. You can still clip and bring them in to Nativity. Every valid Box Tops clip is worth 10 cents for our school.



The new Box Tops labels will look like this. Eventually the Box Tops program will become digital-only. Participating brands are starting to change their packaging from a traditional clip to the new label. If you see this label, use the new Box Tops app to scan your receipt. The app will find

participating products purchased at any store and instantly add cash to our school's earnings online.

THRIVENT ACTION TEAMS & CHOICE DOLLARS

Thrivent members please remember to direct your Choice Dollars to your favorite charity (Nativity Church and School is a good one!) on a quarterly basis. If not directed, the money will go back into Thrivent's administrative fund.

Have an idea for an Action Team? Thrivent members can form two a year where Thrivent will give \$250 seed money to feed the homeless, raise money for someone in need or you can come up with your own idea. If you have any question regarding either of these, please contact Linda Mauger-Harnish at 622-9958 or Kari in the church office.

HANDMADE CARDS

Friday at 9am, join the card making ministry in creating beautiful cards. Sunday morning after worship, you may view the cards and give a donation if you choose any. Special cards can be made upon request.



communion. Rumor has it the MS and HS were going to do some night-time zip lining! Fun!

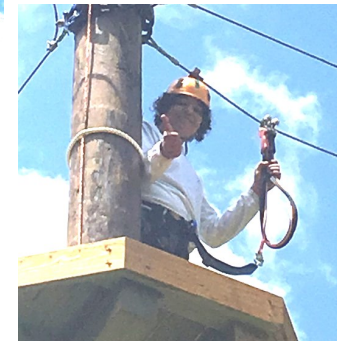
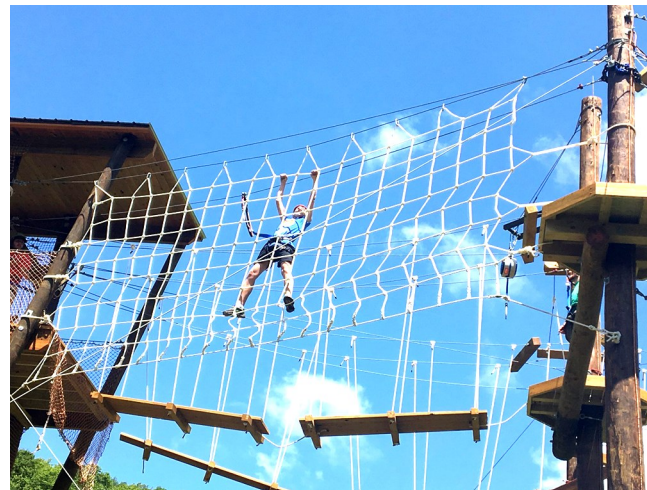
Romans 15:7...Welcome one another, therefore, just as Christ has welcomed you, for the glory of God.

One of the greatest gifts of camp is witnessing the impact camp has on a kid. Day by day they grow closer to one another. With each meal they reveal a little more of who they are to each other. With each night spent in the woods they become a little braver. Every devotion time gives them an opportunity to experience the word of God for their self, and for one another. It's amazing the bonds we can make with one another across all kinds of life's strata (income, ethnicity, belief systems) when we are intentional in letting the Holy Spirit move us toward one another for the purposes of life-giving joy. Sharing a meal, taking a walk, playing together, working together, reading God's word together...being curious, are the blocks that build bridges over walls.

Lord God, thank you for working your Spirit's work amongst the youth this week. They are seeing and receiving the love of your son in one another, time and time again. It's beautiful to witness. Amen.

Peace be with you,

Pastor Steve



MORE LUTHEROCK CAMP PHOTOS



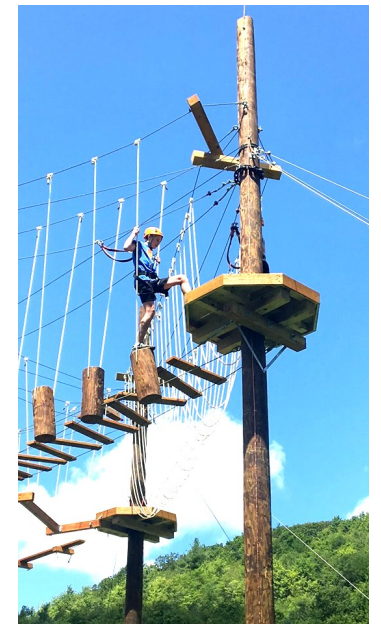
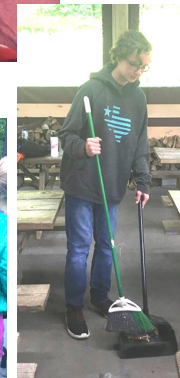
INCOME & EXPENSE STATEMENT JUNE 2019

	Fund 01-General Fund	Fund 02- School	Total
Income			
Church Revenue	\$19,191.76		\$19,191.76
School Revenue		\$3,509.98	\$3,509.98
Total Income	\$19,191.76	\$3,509.98	\$22,701.74
Expenses			
Pastoral Salaries	\$8,309.53		\$8,309.53
Staff Salaries	\$3,637.89		\$3,637.89
School Staff		\$8,112.18	\$8,112.18
Payroll Taxes	\$438.02	620.59	\$1,058.61
Administrative Expenses	\$1,415.49	\$345.15	\$1,760.64
Utilities	\$1,296.83	\$228.85	\$1,525.68
Building & Ground	\$3,587.05	\$552.77	\$4,139.82
Music & Worship	\$255.78		\$255.78
Ministry	\$44.90		\$44.90
Fellowship	\$176.20		\$176.20
School Expenses		\$486.72	\$486.72
Conventions & Seminars	\$1,397.45		\$1,397.45
Total Expenses	\$20,559.13	\$10,346.26	\$30,905.39
Excess Income/Expense	-\$1,367.37	-\$6,836.28	-\$8,203.65

NATIVITY LUTHERAN CHURCH

Balance Sheet
Funds 01-03, June 2019

	Fund 01 - GENERAL FUND	Fund 02 - SCHOOL	Fund 03 - RESTRICTED FUNDS	Total
ASSETS				
BANK ACCOUNTS				
CHECKING ACCOUNT	\$39,386.96		\$23,436.98	\$62,823.94
SAVINGS ACCOUNTS	12,720.88			12,720.88
Subtotal Bank Accounts	52,107.84	0.00	23,436.98	75,544.82
FIXED ASSETS				
LAND	1,750,000.00			1,750,000.00
BUILDINGS	1,250,000.00			1,250,000.00
Subtotal Fixed Assets	3,000,000.00	0.00	0.00	3,000,000.00
TOTAL ASSETS	\$3,052,107.84	\$0.00	\$23,436.98	\$3,075,544.82
LIABILITIES				
LONG-TERM LIABILITIES				
MORTGAGES & LOAN	\$27,056.64			\$27,056.64
TOTAL LIABILITIES	\$27,056.64	\$0.00	\$0.00	\$27,056.64
NET ASSETS				
UNRESTRICTED	\$3,031,887.48	-\$6,836.28		\$3,025,051.20
DONOR RESTRICTED			23,436.98	23,436.98
TOTAL EQUITY	\$3,031,887.48	-\$6,836.28	\$23,436.98	\$3,048,488.18
TOTAL LIABILITIES AND EQUITY	\$3,058,944.12	-\$6,836.28	\$23,436.98	\$3,075,544.82



PRESCHOOL *Scout*

Dear Parents and Guardians:

Welcome and thank you for enrolling your child/children at Nativity Lutheran Church and School. We are excited to start the 2019-2020 school-year together. You will be receiving a "Brightwheel invitation" very soon and we encourage you to download the App to your phone. Through the app you can stay in touch with the teachers and see the progress of your child in a feed. Paying your child's tuition through the app will also be an option this year.

Your child's first day of preschool is Monday, August 12, 2019.

Our Parent Orientation / Teacher "Meet and Greet" will be held on: Sunday, August 11, 2019 at 9:30 AM

We will begin the orientation with the installation of our Teachers during our church service. After the service (about 10.30 AM) you will have the opportunity to meet with your child's teacher and see the classrooms. This is also a great time to bring supplies listed on your child's supply list attached. Please join us for this special occasion as we celebrate the beginning of our preschool year. There will be a Back2School Brunch in the Fellowship Hall for both Church and School.

Uniforms are mandatory at Nativity. Please refer to Harris Uniform, located at: 4152 Blue Heron Blvd., Suite 118, Riviera Beach, FL 33404, Phone 561-881-8689 for all your uniform needs.

As a reminder, for your child's safety and in accordance with licensing standards, please have your child wear closed toe shoes. Sneakers or other comfortable shoes are great.

All children need to have a current Physical (3040) and Immunization Form (680) on file to attend school.

Nativity charges an annual tuition. For your convenience, it is payable in ten monthly installments. Tuition is due on the first of each month – **starting August 1st** and ending May 1st. A delinquency fee of \$30 will be added on the 10th of the month for any remaining balance. Your child/children can return to school upon the reconciliation of your account. We accept payments in the form of cash, check or money order. Checks and money orders are made payable to Nativity Lutheran Church & School. **Please mail or drop off your payment for August.**

Please do not hesitate to call me at 561-622-4998 or e-mail me anytime at pia@pbnativity.com, if you have any questions.

Thank you again for entrusting your child/children into our care. It is an honor to guide them in the light of Christ.

Blessings,

Pia Heiser, Preschool Director

NATIVITY LUTHERAN CHURCH & SCHOOL

Treasurer's Report, June 2019

We have decided to present financial reports directly from our Power Church Plus system this year. The two reports presented here are the Balance Sheet and the Income and Expense Statement.

The Balance Sheet is separated by Funds.

Fund 01 is the General Fund—here you will find Operating Cash, Fixed Assets, and the Mission Investment Fund Loan Principal Outstanding. Fixed asset amounts for Land and Building are estimates that were added onto our balance sheet years ago.

Fund 02 is the School-- YTD operations of the school are reflected as Unrestricted Net Assets. This number is the Fund 02 Excess Income/Expense from the Income and Expense Statement.

Fund 03 are the Restricted Funds. Individual Restricted balances at June 30, 2019 are:

Memorial Fund: \$1,213

MIF Principal Repayment: \$1,250

Capital Fund: \$6,966

Morrissey Fund: \$419

Youth Fund: \$1,756

Summer Camps: \$11,083

Her, Near & Far Children: \$750

ANALYSIS: Income & Expenses are in line with our budgeted expectations through June, and Cash Flow is fine and as expected. We expect to see deficits during the summer months when school is not in session and when many of our members are enjoying time away from the Florida heat.

Respectfully submitted,

CAROLYNE NEW, TREASURER

UPCOMING *Events*

BACK TO SCHOOL SUNDAY

On Sunday August 11th during worship, we will bless and install our teachers for the 2019-2020 school year. Come see the updated and freshly painted classrooms. We will have a number of new families with us during worship. Please make a point of extending that great Nativity love and hospitality to them as they tour the classrooms and meet the teachers. Everyone is invited to bring their backpacks for a blessing. Both Church and School are invited to a Back2School Brunch in the Fellowship Hall following worship.

SANDWICH MAKING

Sandwich making Saturday, August 17th 9:00 a.m. in the fellowship hall. Bring a friend!

MOM'S CLUB

Moms of all stages in life are invited to attend a gathering in Pastor's office on Sunday, August 25 after worship.

MEN'S POWER LUNCH

All men are invited to attend an inspirational lunch in Pastor's office on Wednesday, July 28. Sign up sheet is in the living room.

CAN YOU TAKE THE HEAT?

Then, join us in the kitchen Friday, August 30. We are invited to serve dinner to our underprivileged neighbors at St. George's Episcopal Community Center in Riviera Beach. Set-up, prep, and cooking crew work from 4pm to 5:30pm. From 5:15 to 6:45 the serving, and clean-up crew is on duty. Please sign up for your best time(s) on the clipboard in the Family Room. Afterward, plan to join the crews for dinner at a local restaurant. Questions? Contact Julius Roehl @561-632-0442 or Linda Roehl @561-493-8873. Or Either at talkingturkey2@gmail.com.

SAVE THE DATE!

November 2 will be our 16th Annual Golf Benefit. It will be a scramble format at 8:00 a.m. with a BBQ lunch following. Put it on your calendar and start thinking about your teams and donations. More information to come next month.



Nativity's Preschool Supply List

- 1 Ream Copy Paper (#92 or Above)
- 1 Ream of Card stock (white or any color)
- 1 Pack Beginners Pencils (Fat Pencils)
- 2 Packs Crayola Large Crayons (Fat Crayons)
- 1 Pack Large Crayola Washable Markers
- 2 Bottles of Liquid Elmer's Glue
- 1 Pair of Children's Safety Scissors
- 1 (4 Count) of Play-Doh
- 1 Pack Crayola Colored Pencils
- 2 Antibacterial Hand Sanitizer (8 oz pump)
- 4 Packs of Baby Wipes
- 2 Packs of Sanitizing Wipes (Clorox or Lysol)
- 1 Can Lysol Disinfecting Spray
- 3 Rolls Paper Towels
- 2 Boxes Tissues
- 1 2-Pocket Folder (No Prongs)
- 1 Pack sandwich Ziploc Bags (Boys)
- 1 Pack gallon Ziploc Bags (Girls)
- 1 Brown Paper Lunch Bags
- 1 Change of Clothes (in Ziploc Labeled Bag)
- 1 3" view around Ring Binder for their Portfolio
- 1 Pencil Box

Every Child needs:

a Backpack and a lunchbox for their snack and lunch if they stay for our aftercare.*

Dear members and friends of Nativity,

Our preschool supply list goes home to each child's family . We appreciate any donations from this list that you could make to help us start our 2019-2020 preschool year. Collection Bins are set up in the living room.

August 2019

Office Hours: 9:00 a.m. to 5:00 p.m., Mon-Fri

Preschool: 9:00 a.m. to 12:00 p.m.

Early Care/ After Care: 7:30 a.m. - 5:30 p.m.

SUNDAY	MONDAY	TUESDAY	WEDNESDAY	THURSDAY	FRIDAY	SATURDAY
				1	2	3
4 9:30a Worship	5 First Day for Teaching Staff 9am Teacher Mtg. 5:30p 12-step FH	6 9am Teacher Mtg. 7:30p 12-steps FH & Classroom	7 9am Teacher Mtg.	8 9am Teacher Mtg. 7:00p 12-step FH	9 9am Teacher Mtg.	10
11 9:30a Worship Parent Orientation/ Meet & Greet Blessing of the Backpacks Back2School Brunch in FH	12 First Day of School 5:30p 12-step FH	13 6:30p Council Meeting 7:30p 12-steps FH & Classroom	14 10a Children's Chapel & Blessing of Backpacks	15 7:00p 12-step FH	16	17 9:00a Sandwich Making
18 9:30a Worship	19 5:30p 12-step FH	20 7:30p 12-steps FH & Classroom	21 10a Children's Chapel	22 7:00p 12-step FH	23	24
25 9:30a Worship 11a Mom's Group	26 5:30p 12-step FH	27 7:30p 12-steps FH & Classroom	28 10a Children's Chapel 12p Men's Power Lunch	29	30 4p St. George's Dinner	31