



DEA No. RA0571996  
 FL License # CMTL-0003  
 CLIA No. 10D1094068

# Certificate of Analysis

## Compliance Test

**MNP INDUSTRIES**  
 8255 Commercial Way  
 Weeki Wachee, FL 34613

Batch # BDFS2515122  
 Batch Date: 2022-05-31  
 Extracted From: Hemp

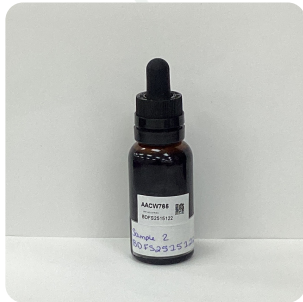
Test Reg State: Florida

Order # MNP220531-040001  
 Order Date: 2022-05-31  
 Sample # AACW765

Sampling Date: 2022-06-01  
 Lab Batch Date: 2022-06-01  
 Completion Date: 2022-06-06

Initial Gross Weight: 80.210 g  
 Volume: 30 ml

Number of Units: 1  
 Net Weight per Unit: 28758.323 mg



Product Image

Potency  
 Tested

**Potency 10**  **Tested**

Specimen Weight: 107.110 mg SOP13.001 (LCUV)

Analyte	Dilution (1:n)	LOD (%)	LOQ (%)	Result (mg/g)	(%)
CBD	1000.000	0.000054	0.002	94.590	9.459
CBG	1000.000	0.000248	0.002	0.500	0.050
CBDV	1000.000	0.000065	0.002	0.440	0.044
CBN	1000.000	0.000014	0.002	0.430	0.043
CBC	1000.000	0.000018	0.002	0.420	0.042
THCA	1000.000	0.000032	0.002		<LOQ
Delta-9 THC	1000.000	0.000013	0.002		<LOQ
CBGA	1000.000	0.00008	0.002		<LOQ
CBDA	1000.000	0.00001	0.002		<LOQ
THCV	1000.000	0.000007	0.002		<LOQ

**Potency Summary**

Total THC None Detected	Total CBD 9.459%	2,720.250mg
Total CBG 0.050%	14.380mg	Total CBN 0.043%
Other Cannabinoids 0.086%	24.730mg	Total Cannabinoids 9.638%
		12.370mg
		2,771.730mg

Xueli Gao Lab Toxicologist  
 Ph.D., DABT

Aixia Sun Lab Director/Principal Scientist  
 D.H.Sc., M.Sc., B.Sc., MT (AAB)



Definitions and Abbreviations used in this report: Total CBD = CBD + (CBD-A \* 0.877), \*Total CBDV = CBDV + (CBDVA \* 0.87), Total THC = THCA-A \* 0.877 + Delta 9 THC, Total THCV = THCV + (THCVA \* 0.87), CBG Total = (CBGA \* 0.877) + CBG, CBN Total = (CBNA \* 0.877) + CBN, Total CBC = CBC + (CBCA \* 0.877), Total THC-O-Acetate = Delta 8 THC-O-Acetate + Delta 9 THC-O-Acetate, Other Cannabinoids Total = Total Cannabinoids - All the listed cannabinoids on the summary section, Total Detected Cannabinoids = Delta6a10a-THC + Delta8-THC + Total CBN + CBT + Delta8-THCV + Total CBG + Total CBD + Total THCV + CBL + Total THC + Total CBC + Total CBDV + Delta10-THC + Total THC-O-Acetate, Analyte Details above show the Dry Weight Concentrations unless specified as 12% moisture concentration. (mg/ml) = Milligrams per Milliliter, LOQ = Limit of Quantitation, LOD = Limit of Detection, Dilution = Dilution Factor (ppb) = Parts per Billion, (%) = Percent, (cfu/g) = Colony Forming Unit per Gram (cfu/g) = Colony Forming Unit per Gram, , LOD = Limit of Detection, (µg/g) = Microgram per Gram (ppm) = Parts per Million, (ppm) = (µg/g), (aw) = aw (area ratio) = Area Ratio, (mg/Kg) = Milligram per Kilogram, \*Measurement of Uncertainty = +/- 10%

This report shall not be reproduced, without written approval, from ACS Laboratory. The results of this report relate only to the material or product analyzed. Test results are confidential unless explicitly waived otherwise. Accredited by a third-party accrediting body as a competent testing laboratory pursuant to ISO/IEC 17025 of the International Organization for Standardization.