



DEA No. RA0571996
FL License # CMTL-0003
CLIA No. 10D1094068

Certificate of Analysis

Compliance Test

MNP INDUSTRIES
8255 Commercial Way
Weeki Wachee, FL 34613

Batch # B21000235
Batch Date: 2020-11-17
Extracted From: Hemp

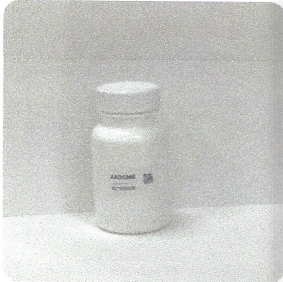
Test Reg State: Florida

Order # MNP220718-010001
Order Date: 2022-07-18
Sample # AADC898

Sampling Date: 2022-07-19
Lab Batch Date: 2022-07-19
Completion Date: 2022-07-25

Initial Gross Weight: 48.092 g
Net Weight: 18.508 g

Number of Units: 1
Net Weight per Unit: 393.787 mg



Product Image

Potency
Tested



Potency 10

Specimen Weight: 103.690 mg

Tested
SOP13.001 (LCUV)



Potency Summary

-	Total THC None Detected	2.896%	Total CBD 11.400mg
-	Total CBG None Detected	-	Total CBN None Detected
-	Other Cannabinoids None Detected	2.896%	Total Cannabinoids per Capsule 11.400mg

Pieces For Panel: 47

Analyte	Dilution (1:n)	LOD (%)	LOQ (%)	Result (mg/g)	(%)
CBD	100.000	5.40E-5	0.002	28.960	2.896
CBC	10.000	1.80E-5	0.002	<LOQ	<LOQ
THCA	10.000	3.20E-5	0.002	<LOQ	<LOQ
Delta-9 THC	10.000	1.30E-5	0.002	<LOQ	<LOQ
CBN	10.000	1.40E-5	0.002	<LOQ	<LOQ
CBGA	10.000	8.00E-5	0.002	<LOQ	<LOQ
CBG	10.000	2.48E-4	0.002	<LOQ	<LOQ
CBDV	10.000	6.50E-5	0.002	<LOQ	<LOQ
CBDA	10.000	1.00E-5	0.002	<LOQ	<LOQ
THCV	10.000	7.00E-6	0.002	<LOQ	<LOQ

Xueli Gao
Ph.D., DABT
Lab Toxicologist

Aixia Sun
D.H.Sc., M.Sc., B.Sc., MT (AAB)
Lab Director/Principal Scientist



Definitions and Abbreviations used in this report: Total CBD = CBD + (CBD-A * 0.877), *Total CBDV = CBDV + (CBDVA * 0.87), Total THC = THCA-A * 0.877 + Delta 9 THC, Total THCV = THCV + (THCVA * 0.87), CBG Total = (CBGA * 0.877) + CBG, CBN Total = (CBNA * 0.877) + CBN, Total CBC = CBC + (CBCA * 0.877), Total THC-O-Acetate = Delta 8 THC-O-Acetate + Delta 9 THC-O-Acetate, Other Cannabinoids Total = Total Cannabinoids - All the listed cannabinoids on the summary section, Total Detected Cannabinoids = Delta8a10a-THC + Delta8-THC + Total CBN + CBT + Delta8-THCV + Total CBG + Total CBD + Total THCV + CBL + Total THC + Total CBC + Total CBDV + Delta10-THC + Total THC-O-Acetate, Analyte Details above show the Dry Weight Concentrations unless specified as 12% moisture concentration. (mg/ml) = Milligrams per Milliliter, LOQ = Limit of Quantitation, LOD = Limit of Detection, Dilution = Dilution Factor (ppb) = Parts per Billion, (%) = Percent, (cfu/g) = Colony Forming Unit per Gram (cfu/g) = Colony Forming Unit per Gram, LOD = Limit of Detection, (µg/g) = Microgram per Gram (ppm) = Parts per Million, (ppm) = (µg/g), (aw) = aw (area ratio) = Area Ratio, (mg/Kg) = Milligram per Kilogram, *Measurement of Uncertainty = +/- 10%

This report shall not be reproduced, without written approval, from ACS Laboratory. The results of this report relate only to the material or product analyzed. Test results are confidential unless explicitly waived otherwise. Accredited by a third-party accrediting body as a competent testing laboratory pursuant to ISO/IEC 17025 of the International Organization for Standardization.