



License No. 800025015
 FL License # CMTL-0003
 CLIA No. 10D1094068

Certificate of Analysis

Compliance Test

MNP INDUSTRIES
 4000 SHOAL LINE BLVD
 HERNANDO BEACH, FL 34607

Batch # BDPG32217
 Batch Date: 2022-01-17
 Extracted From: Hemp

Test Reg State: Florida

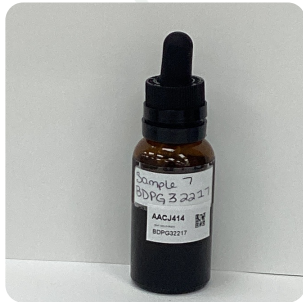
Production Facility: MNP Industries
 Production Date: 2022-01-17

Order # MNP220117-110001
 Order Date: 2022-01-17
 Sample # AACJ414

Sampling Date: 2022-01-18
 Lab Batch Date: 2022-01-18
 Completion Date: 2022-01-21

Initial Gross Weight: 77.803 g
 Net Weight: 25.641 g

Number of Units: 1
 Net Weight per Unit: 25641.000 mg



Product Image

**Potency
 Tested**



Potency - 11

Specimen Weight: 102.500 mg

Analyte	Dilution (1:n)	LOD (%)	LOQ (%)	Result (mg/g)	(%)
CBD	1000.000	0.000054	0.001	13.000	1.300
CBC	1000.000	0.000018	0.001		<LOQ
THCV	1000.000	0.000007	0.001		<LOQ
Delta-9 THC	1000.000	0.000013	0.001		<LOQ
Delta-8 THC	1000.000	0.000026	0.001		<LOQ
CBN	1000.000	0.000014	0.001		<LOQ
CBGA	1000.000	0.000008	0.001		<LOQ
CBG	1000.000	0.000248	0.001		<LOQ
CBDV	1000.000	0.000065	0.001		<LOQ
CBDA	1000.000	0.000001	0.001		<LOQ
THCA-A	1000.000	0.000032	0.001		<LOQ

**Tested
 (LCUV)**



Potency Summary

Total THC None Detected	1.300%	Total CBD 333.333mg
Total CBG None Detected		Total CBN None Detected
Other Cannabinoids None Detected	1.300%	Total Cannabinoids 333.333mg

Xueli Gao Lab Toxicologist
 Ph.D., DABT

Aixia Sun Lab Director/Principal Scientist
 D.H.Sc., M.Sc., B.Sc., MT (AAB)



Definitions and Abbreviations used in this report: *Total CBD = CBD + (CBD-A * 0.877), *Total CBDV = CBDV + (CBDVA * 0.87), *Total THC = THCA-A * 0.877 + Delta 9 THC, *Total THCV = THCV + (THCVA * 0.87), *CBG Total = (CBGA * 0.877) + CBG, *CBN Total = (CBNA * 0.877) + CBN, *Total CBC = CBC + (CBCA * 0.877), *Total THC-O-Acetate = Delta 8 THC-O-Acetate + Delta 9 THC-O-Acetate, *Other Cannabinoids Total = Total Cannabinoids - All the listed cannabinoids on the summary section, *Total Detected Cannabinoids = Delta8-THC + Total CBN + CBT + Delta8-THCV + Total CBG + Total CBD + Total THCV + CBL + Total THC + Total CBC + Total CBDV + Delta10-THC + Total THC-O-Acetate, *Analyte Details above show the Dry Weight Concentrations unless specified as 12% moisture concentration. (mg/ml) = Milligrams per Milliliter, LOQ = Limit of Quantitation, LOD = Limit of Detection, Dilution = Dilution Factor (ppb) = Parts per Billion, (%) = Percent, (cfu/g) = Colony Forming Unit per Gram (cfu/g) = Colony Forming Unit per Gram, LOD = Limit of Detection, (µg/g) = Microgram per Gram (ppm) = Parts per Million, (ppm) = (µg/g), (aw) = aw (area ratio) = Area Ratio, (mg/Kg) = Milligram per Kilogram, *Measurement of Uncertainty = +/- 10%



This report shall not be reproduced, without written approval, from ACS Laboratory. The results of this report relate only to the material or product analyzed. Test results are confidential unless explicitly waived otherwise. Accredited by a third-party accrediting body as a competent testing laboratory pursuant to ISO/IEC 17025 of the International Organization for Standardization.