

June 12th 2023

East Holme Rifle range information for customers. supplementary to Range regulations

Timings

No more than three users per lane on a multi user session. Club bookings may choose to allow more but are reminded this will increase time on zeroing.

Time slots available are listed on the website and will list any restrictions that may apply such as set distance or moderated only.

lane hire slots are assigned to INCLUDE 30 minutes for briefing and up to 45 minutes of zero procedure, as such standard slots are 2hr of firing time. When multiple users are in attendance anyone who arrives after the beginning of the brief will not be permitted to fire. When there is a single club it will be the decision of the club whether to suspend firing to provide briefing to latecomers out of their range time. Range users requiring an excessive number of shots or time to prove their zero may be asked to leave to prevent delays to other range users.

Zeroing procedure may be carried over to later slots on the same day only.

Morning briefing begins at 9:00 firing begins at 9:30 firing ends at 12:30, Afternoon briefing begins at 13:30 firing begins at 14:00 and firing ends at 17:00. Full range, full day bookings may chose in advance to move the hours silence for lunch but must start no later than 13:00 and last a full hour.

Moderators are strongly encouraged

We would like to keep our neighbours as happy as possible as they sit 70m to the side of the 400 yard firing point. As such we encourage any who can to use moderators and the extra fee for muzzle brake user lanes is both to cover leaving an empty lane beside them and to discourage unnecessary use of muzzle brakes.

Paperwork

Booking as an individual

Proof of competency, proof of insurance, basic personal information and details of firearms to be used must be submitted individually, in advance, for mixed firing sessions as these are stored in case of incident.

On the day we will want to see your firearms licence (as proof you are not a prohibited person), proof of competency and proof of insurance.

On the day a disclaimer will need to be signed.

if acting as RSO we will want to see a valid RSO or RCO card

Booking as a Club

When booking as a club the club must submit a list of range users with firearms they will be using, proof of insurance, if applicable proof of HOA. The club will be responsible for insuring all attendees are insured and competent and that RSOs have in date qualifications.

On the day club every shooter will be asked to sign our disclaimer; the designated person from the club will be asked to sign to say all shooters fulfil our requirements.

On the day we will ask to see the RSOs card and randomly select a few shooters to show they have their firearms certificate* and proof of competence.

Targetry

All supersonic firing will be using Shotmarker electronic target systems, viewing of targets can be done from any wifi enabled device. We recommend the use of tablets or larger smartphones.

We currently stock IKFRA (NRA) standard 200 yard, 300 yard 400 yard and 200 F class and 300 F class faces. If you want other faces then you may either supply your own mounted on cardboard sheet either 450mm x 450mm or 905mm x 1095mm or send us 100 (or more) faces two weeks in advance and we will mount them and add them to the available inventory (if you provide the supplier details we will keep them in stock from that point on)

Booking

Please see website for slots that are defiantly available, if you can't see the day or time you want then please ask as it may be possible to add it

Bookings to ehrrbookings@alaska.ltd.uk

Probationary Members and Guests

*Whilst we do not allow new shooters to use the range at this time, a shooter who has obtained proof of competence but does not yet have their firearms licence may shoot with their club provided that club is home office approved, they are supervised 1 to 1 one and all relevant protocols are followed. Rather than presenting their Firearms certificate as proof of not being a prohibited person they should present their club membership and their supervisor

Price reductions are available in exchange for assistance in range maintenance tasks or provision of RSOs on multi user days

Weekday rates

	Club run	Arrive and shoot
Whole range Full day	£ 850	£ 1,210
Whole range one session	£ 475	£ 675
One lane per session	£ 65	£ 85
whole range Extended session (extra hour)	£ 525	£ 750
one lane extended session (extra hour)	£ 75	£ 95
Zero session per user (moderated only)		£ 15

Saturday rates

	Club run	Arrive and shoot
Whole range Full day	£ 950	£ 1,310
Whole range one session	£ 525	£ 725
One lane per session	£ 70	£ 90
whole range Extended session (extra hour)	£ 575	£ 800
one lane extended session (extra hour)	£ 80	£ 100
Zero session per user (moderated only)		£ 15

optional extra charges:

£10 hire of small tablet to display target data, available on a first come first served basis.

£30 hire of top notch tablet to display target data, available on a first come first served basis.

£50 lane allocation for muzzle brake use

£poa set up fee for non listed target. (this includes ordering of 100 faces, backings and jig setup)

£500 per lane projectiles over 25mm diameter lead or 15mm iron.

Briefing

I am X and my roll today is [RMO and RCO] i can be identified by [orange/red hi vis] [I have basic first aid training]

Y and Z are assisting me and can be identified by [blue vi vis]

A and B are the clubs designated first aiders.

Range commands, users should be familiar with these even on a club run day.

To avoid confusion across disciplines we use plain english in commands.

The word fire should only be uttered when something is burning down, fire assembly point car park.

'STOP STOP STOP'

Immediately stop what you are doing and remove finger from trigger guard. Do not make any further move, if loaded remain sighted on target, do not put on safety, do not unload, do not scratch nose.

'GROUND ARMS' or 'BENCH RIFLES'

All firearms should immediately be placed on the ground or bench pointing at the stop butt (even before the command 'Unload')

'STAND CLEAR' or 'STAND BACK'.

Remove yourself from the firing point without taking any other action.

'UNLOAD'

return to your firearm and make safe

RANGE IS HOT (issued by on clearance from RMO only)

RSO's COMMAND YOUR LANES. (issued by RMO only)

YOU MAY UNBAG

YOU MAY UNBAG AND POPULATE THE LINE

SHOOTERS TO THE POINT/SHOOTERS TO THE LINE

YOU MAY LOAD

LANE X MAY LOAD

CARRY ON/ GO ON

LANE X CARRY ON

LAST ROUND AND MAKE SAFE

UNLOAD AND SHOW CLEAR

CLEAR THE LINE/CLEAR THE POINT

LANE X YOUR ZERO IS PROVEN, YOU MAY SAVE AND MAKEWAY

RANGE IS COLD (once this command is issued only the RMO may resume activities)

Do not chamber rounds when not on target

Any rounds not tracked by the target system either by system malfunction or bullets striking outside the area of the frame must be notified to the RSO, the fall of shot of the next round observed by an assisting RSO and the RMO informed at session end.

Ensure you have “shown clear” to RSO or assisting RSO before removing firearm from firing position

Emergency plan, First aid Kit and Major trauma pack in box on quad bike.

Hearing protection recommended [mandatory]

Misfire drill:

If a misfire occurs you should inform the RSO and wait at least 30 seconds with the rifle still in your shoulder pointing downrange at your target, in case of hang fires. Carefully place your rifle on the ground, ensuring that it still points towards your target and horizontal with the ground. Open the bolt carefully ensuring that your hand is not behind the bolt, and that no-one is standing behind or beside the rifle. Check that the cartridge comes out complete with the bullet. Do not put the round back in the rifle, keep it separate from your other live ammo and then hand it in for disposal.

What to expect, **club run day**, full range:

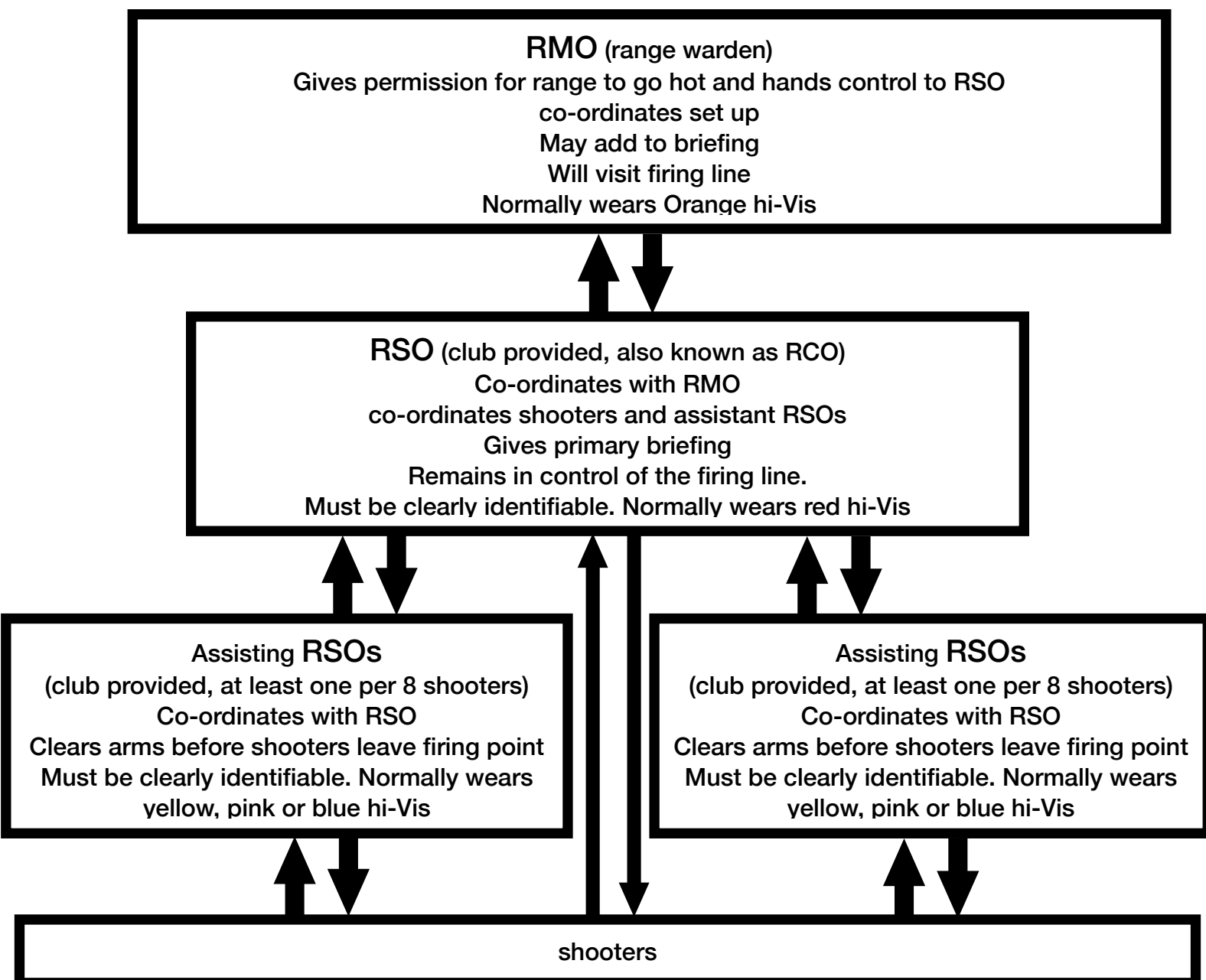
Set up assistance: minimum of three persons half an hour early, tasks will include putting up and taking down the nearest two boundary flags and helping set out the target systems. firing must not commence until 30 minutes after flags are raised.

The Club signatory is responsible for ensuring members are adequately briefed, ensuring they have adequate training, insurance, licences and ensuring all sign disclaimers and the sign in log.

The RMO will check RSO and all assistant RSO cards and a random selection of shooters for firearms licence and evidence of competence (NRA SSC, DSC1, UKPSA comp licence, Rifleman firearms POC) .

Zero check will be carried out under the direction of the club RSO, the RMO will observe and be on hand to recalibrate target sensors. Not to begin before 9:30 am

Course of fire directed by the club, an hour of silence between 12:00 and 14:00 will be observed and all firearms cleared by 17:00 pm RSO will advise RMO when lunch break begins and request clearance before resuming shooting in the afternoon.



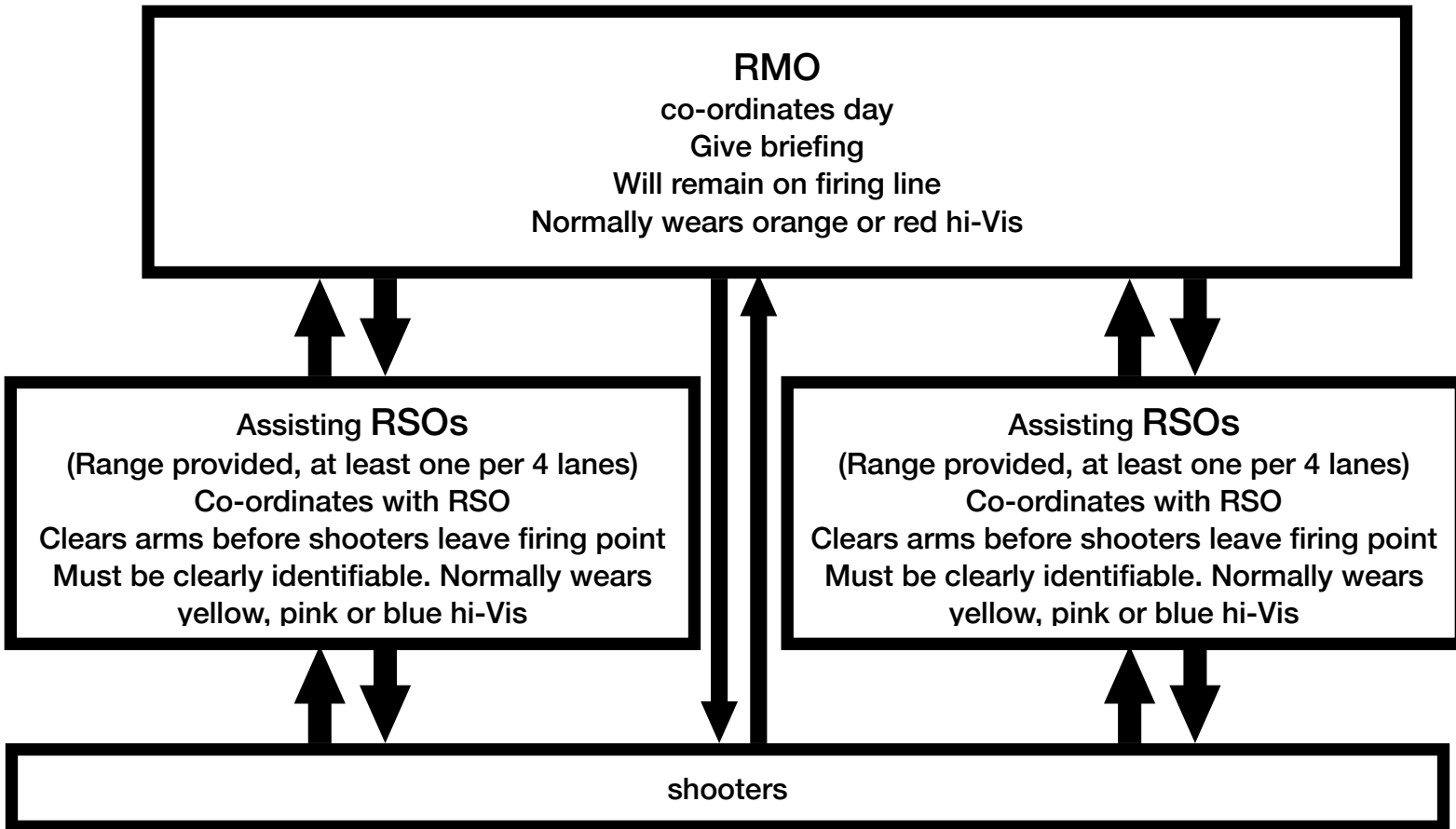
What to expect, **Arrive and shoot**, full range.

Arrive before advertised start time.

Receive briefing, have documents checked, sign disclaimer

Prove Zero

Proceed to course of fire

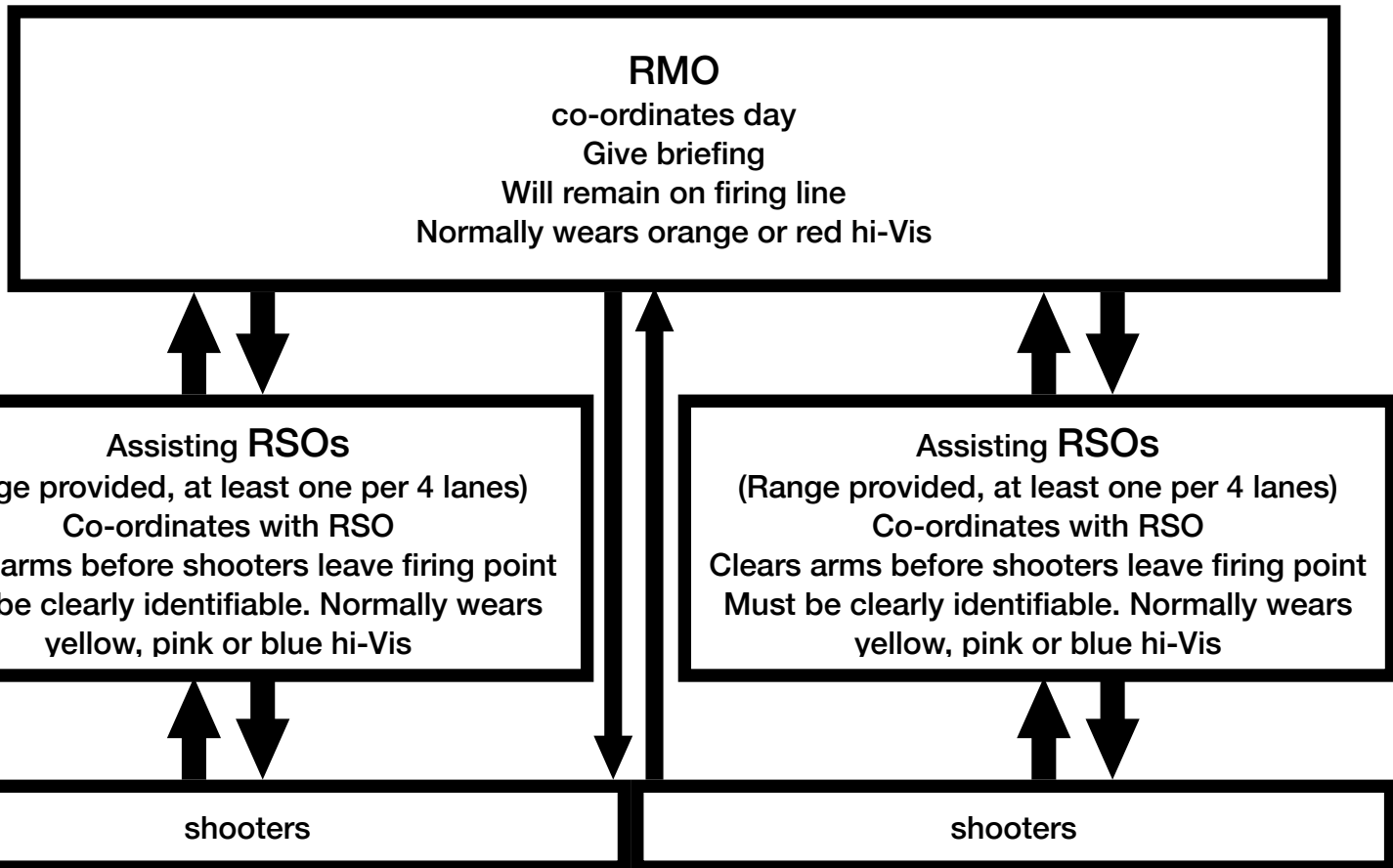


What to expect, **Multi user day**, offering assistance.

Assistants to arrive at least 30 minutes prior to advertised start time.

Briefing by or in the range building at the advertised start time

No more than three users per lane on a multi user session.



This page will include Instruction on shotmarker target system.