



Outdoor Blinds, Awnings, Care & Maintenance

Shade and Style for Every Home



Outdoor Patio Blinds

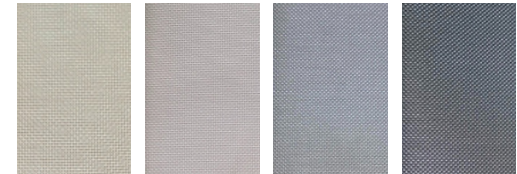
“—
Experience the perfect blend of comfort
and elegance with Sunteca Shadetrack
Outdoor Blinds. ”



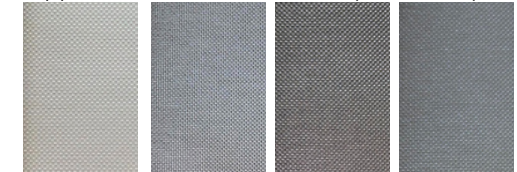
NEW SHELTER FABRIC RANGE

Sunteca is excited to introduce our exclusive Shelter Fabric collection! This line showcases a modern colour palette, highlighting our most sought-after shades. You can also feel confident knowing that all our fabrics are sourced locally. Enjoy discovering our vibrant new selection!

Porcelain Banksia Mont Charcoal



Cappuccino Flint Ebony Bushland Grey



FEATURES AND BENEFITS

• Motorised or Manual Options

- Over 4500mm must be motorised.
- Maximum size: 5850mm Width x 3500mm Height.

• Positive Tension System

- Tensioned from the head box, unlike inferior side-tension designs.

• High-Quality Components

- Made from T6 Tensile Aluminium for durability in harsh conditions.
- Marine-grade, nylon-infused plastic components with fiberglass infusion.
- Stainless steel screws and rivets for better corrosion resistance.

• Versatile Manual System

- Comes with a handle, with an option for handles on both sides.
- Multi-stop feature allows the awning to be stopped at various heights.
- Stops can be inserted on side channels for mid or bottom positioning.

• Base Rail Options

- Skirt or rubber spline can be added to hide height differences in the floor.

• Sun Protection

- Designed primarily for blocking the sun, not the wind.
- Recommended to raise the awning in strong winds.

Auto Awnings

FEATURES AND BENEFITS

- **Popular Choice**
 - Excellent for shade and reducing heat from windows.
- **Easy Operation**
 - Pull down using a pull bar or by hand.
- **Adjustable Positioning**
 - Auto arm connected to the auto guide allows easy up and down movement.
- **Simple Retraction**
 - Push the arm in to raise the blind.
- **Style It Up**
 - Skirt can be fitted to the bottom for a desired appearance.



Verandah Awnings

FEATURES AND BENEFITS

- **Versatile Use**
 - Also known as café or patio blind.
- **Robust Construction**
 - Top pocket with 50mm x 20mm timber.
 - Bottom pocket with 40mm diameter metal tube.
 - Includes pulleys and rope for raising the blind.
 - Requires straps to secure at the bottom.
- **Standard Design**
 - 100mm straight flap at the bottom (unless specified otherwise).
- **Easy Operation**
 - Train the product by manually rolling it up and down with the ropes.
- **Secure Tie-Down**
 - 350mm or 450mm strap at the bottom for tie-down.



Geared Crank Awnings



FEATURES AND BENEFITS

- **Wind Performance**
 - Performs well in windy conditions, but keep blinds up during wind warnings.
- **Gear Crank Mechanism**
 - Tensions the blind by turning clockwise, keeping the fabric tight.
- **Easy Operation**
 - To raise the blind, remove the lock-in pins at the bottom of the guides and turn the crank handle anti-clockwise.
- **Operation Options**
 - Available in both manual and motorised versions.
- **Popular Choice**
 - Stainless steel side guides with head box, manual or motorised is the popular choice, however, we do have two other options available.



Multi-Stop Awnings

Experience ultimate control and comfort with Sunteca's Multi-Stop Awnings. These innovative awnings allow you to easily adjust the height to block out unwanted sun and glare, ensuring a comfortable outdoor space all year round. Built with high-quality materials and designed to withstand Western Australia's harsh climate, Sunteca's Multi-Stop Awnings are both durable and stylish. Whether you're looking to enhance your patio, verandah, or any outdoor living area, these awnings provide the perfect solution for creating a cool, shaded environment. Enjoy greater flexibility and protection with Sunteca's Multi-Stop Awnings.

FEATURES AND BENEFITS

- **Secure Base Rail**
 - Push down to stop the awning from moving.
- **Classic Design**
 - Older style with side guides, bottom rail, and roll at the top, similar to Shade Track Awning.



Fabric Awning Operation, Care, Maintenance & Warranty

Operation

- Always operate your awning from the CENTRE for even rolling of the fabric around the top tube.
- Operating the awning in windy conditions can be difficult because of the pressure the wind puts on the blind, so either wait for a break in the wind to move the blind or push against the centre of the skin with your hand on the side that is bellowing out against the wind to relieve the tension to move the blind.
- For intermediate locking positions always take the awning all the way up to the top first and then pull the awning down to the required intermediate position.
- As awnings are a shade product and not for wind or rain, always have the awning all the way up in very strong winds.

Care

- Keep the fabric clean by brushing regularly both on the top and underside with a soft bristled brush and by hosing occasionally with clear, cold water.
- Do not apply soaps, detergents, cleaning fluids or insecticides to the fabric.
- Keep petrol, oil, solvents, kerosene and other similar fluids away from the fabric.
- Do not allow bird droppings, earth, sand, or vegetable matter to remain in contact with the fabric.
- It is important that a fabric awning or blind is let down to dry after wet weather or hosing down and should not be rolled up or stowed away when wet.

Maintenance

- If any components require lubricating on your awning it is recommended to lightly use silicon spray.
- DO NOT USE any oil based lubricant as this will damage and stain the fabric.
- Canvas fabrics can have the appearance of being wavy or rippled after periods of the awning being left in one position. This can be solved by simply pulling the awning all the way down and soaking the fabric with your garden hose and then leaving the awning to dry.

Warranty

- Sunteca offers a 2 year warranty against faulty products. The guarantee does not extend to damage caused by accident, misuse or abuse of the product and does not cover depreciation through ordinary wear and tear.



About Us

Sunteca (WA) Pty Ltd is a family owned West Australian company that has been manufacturing blinds, awnings, shutters, doors and screens for over 52 years. As a subsidiary of Westral Home Improvements, which was founded in 1973, Sunteca commenced wholesaling in 1991 and now has over two hundred wholesale clients throughout Australia.

Sunteca employs over two hundred staff and sub-contractors. It operates from a 18,000 square metre manufacturing and warehousing facility located in Canning Vale. Sunteca is at the forefront of researching new products, innovations, new plant and machinery with an aim to supply its customers with the latest and best products available.

Sunteca is focused on giving its clients the highest quality products and the best possible service provided by a dedicated team of professional staff.

**Reach Out to Your Local
Authorised Sunteca Agent**