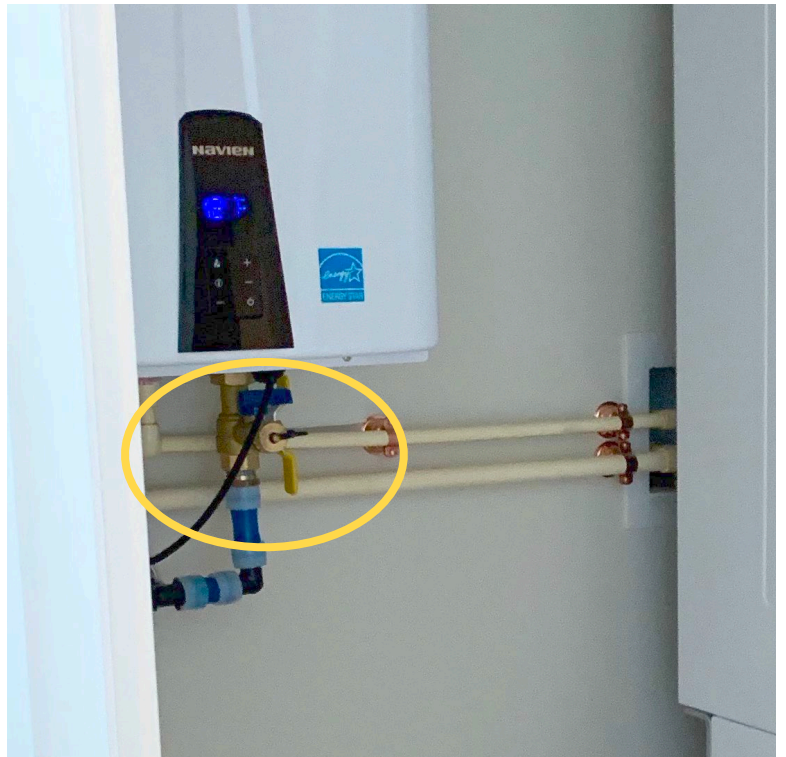


Gas Shut Off Valves

The main gas shut off valve is located outside on the alley side of the house on the utility meter. The gas supply to the water heater can be shut off by using the yellow handle, directly underneath the unit. The gas supply shut off lever to the oven is located behind the appliance.



Water Shut Off Valves

Water shut off valves are located under all the sinks. The laundry water shut off valves are located on the wall behind the unit. The water shut off valve to the water heater heater is located on the wall behind the laundry machines. The Main Water shut off valve to the entire house is located on the alley side of the house next to the water meter.

