

SEOBDA All-District Scale Requirement

Eighth / Ninth Grade

Concert B Flat

Concert E Flat

Concert A Flat

Flute

Oboe

Bassoon

Clarinet in B \flat

Bass Clarinet

Alto Sax.

Tenor Sax.

Trumpet in B \flat

Horn in F

Trombone

Euphonium (T.C.)

Tuba

1 2 3 4 5 6 8 9

All-District Scales
Eighth / Ninth Grade

Concert D Flat Concert F Chromatic Scale - Starting on B Flat

Fl.
Ob.
Bsn.
B♭ Cl.
B. Cl.
A. Sx.
T. Sx.
B♭ Tpt.
Hn.
Tbn.
Bar.
Euph.
Tuba

10 11 12 13 14 15 16 17 18

SEOBDA All-District Scale Requirement

Eighth / Ninth Grade Flute

Concert B Flat

Musical notation for Concert B Flat scale, measures 1-3. The scale is in B-flat major (two flats) and common time. It consists of a half note B-flat, followed by quarter notes C, D, E-flat, F, G, A, B-flat, and a final half note B-flat. Measure numbers 1, 2, and 3 are indicated below the staff.

Concert E Flat

Musical notation for Concert E-flat major (three flats) scale, measures 4-6. It consists of a half note E-flat, followed by quarter notes F, G, A, B-flat, C, D, E-flat, and a final half note E-flat. Measure numbers 4, 5, and 6 are indicated below the staff.

Concert A Flat

Musical notation for Concert A-flat major (three flats) scale, measures 7-9. It consists of a half note A-flat, followed by quarter notes B-flat, C, D, E-flat, F, G, A-flat, and a final half note A-flat. Measure numbers 7, 8, and 9 are indicated below the staff.

Concert D Flat

Musical notation for Concert D-flat major (four flats) scale, measures 10-12. It consists of a half note D-flat, followed by quarter notes E-flat, F, G, A-flat, B-flat, C, D-flat, and a final half note D-flat. Measure numbers 10, 11, and 12 are indicated below the staff.

Concert F

Musical notation for Concert F major (one flat) scale, measures 13-15. It consists of a half note F, followed by quarter notes G, A, B-flat, C, D, E, F, and a final half note F. Measure numbers 13, 14, and 15 are indicated below the staff.

Chromatic

Musical notation for Chromatic scale, measures 16-18. The scale is in B-flat major and 3/4 time. It consists of a half note B-flat, followed by quarter notes C, C-sharp, D, D-flat, E, E-flat, F, F-sharp, G, G-flat, A, A-flat, B-flat, and a final half note B-flat. Measure numbers 16, 17, and 18 are indicated below the staff.

SEOBDA All-District Scale Requirement

Eighth / Ninth Grade Oboe

Concert B Flat

Musical notation for Concert B Flat scale, measures 1-3. The scale is in B-flat major (two flats) and common time. Measure 1 contains notes B-flat, C, D, E, F, G, A, B-flat. Measure 2 contains notes A, G, F, E, D, C, B-flat, A. Measure 3 contains notes G, F, E, D, C, B-flat, A, G, followed by a whole rest.

Concert E Flat

Musical notation for Concert E-flat major (three flats) scale, measures 4-6. Measure 4 contains notes E-flat, F, G, A, B-flat, C, D, E-flat. Measure 5 contains notes D, C, B-flat, A, G, F, E-flat, D. Measure 6 contains notes C, B-flat, A, G, F, E-flat, D, C, followed by a whole rest.

Concert A Flat

Musical notation for Concert A-flat major (three flats) scale, measures 7-9. Measure 7 contains notes A-flat, B-flat, C, D, E-flat, F, G, A-flat. Measure 8 contains notes G, F, E-flat, D, C, B-flat, A-flat, G. Measure 9 contains notes F, E-flat, D, C, B-flat, A-flat, G, F, followed by a whole rest.

Concert D Flat

Musical notation for Concert D-flat major (four flats) scale, measures 10-12. Measure 10 contains notes D-flat, E-flat, F, G, A-flat, B-flat, C, D-flat. Measure 11 contains notes C, B-flat, A-flat, G, F, E-flat, D-flat, C. Measure 12 contains notes B-flat, A-flat, G, F, E-flat, D-flat, C, B-flat, followed by a whole rest.

Concert F

Musical notation for Concert F major (one flat) scale, measures 13-15. Measure 13 contains notes F, G, A, B, C, D, E, F. Measure 14 contains notes E, D, C, B, A, G, F, E. Measure 15 contains notes D, C, B, A, G, F, E, D, followed by a whole rest.

Chromatic

Musical notation for Chromatic scale, measures 16-18. Measure 16 contains notes F, F-sharp, G, G-flat, A, A-flat, B, B-flat, C, C-sharp, D, D-flat, E, E-flat, F. Measure 17 contains notes F, F-sharp, G, G-flat, A, A-flat, B, B-flat, C, C-sharp, D, D-flat, E, E-flat, F. Measure 18 contains notes F, F-sharp, G, G-flat, A, A-flat, B, B-flat, C, C-sharp, D, D-flat, E, E-flat, F, followed by a whole rest.

SEOBDA All-District Scale Requirement

Eighth / Ninth Grade Bassoon

Concert B Flat



Musical notation for Concert B Flat scale, measures 1-3. The scale starts on B-flat and moves up to C. Measure 1 contains notes B-flat, C, D, E-flat, F, G, A, B-flat. Measure 2 contains notes C, D, E-flat, F, G, A, B-flat. Measure 3 contains notes C, D, E-flat, F, G, A, B-flat, C.

Concert E Flat



Musical notation for Concert E Flat scale, measures 4-6. The scale starts on E-flat and moves up to F. Measure 4 contains notes E-flat, F, G, A, B-flat, C, D, E-flat. Measure 5 contains notes F, G, A, B-flat, C, D, E-flat. Measure 6 contains notes F, G, A, B-flat, C, D, E-flat, F.

Concert A Flat



Musical notation for Concert A Flat scale, measures 7-9. The scale starts on A-flat and moves up to B-flat. Measure 7 contains notes A-flat, B-flat, C, D, E-flat, F, G, A-flat. Measure 8 contains notes B-flat, C, D, E-flat, F, G, A-flat. Measure 9 contains notes B-flat, C, D, E-flat, F, G, A-flat, B-flat.

Concert D Flat



Musical notation for Concert D Flat scale, measures 10-12. The scale starts on D-flat and moves up to E-flat. Measure 10 contains notes D-flat, E-flat, F, G, A-flat, B-flat, C, D-flat. Measure 11 contains notes E-flat, F, G, A-flat, B-flat, C, D-flat. Measure 12 contains notes E-flat, F, G, A-flat, B-flat, C, D-flat, E-flat.

Concert F



Musical notation for Concert F scale, measures 13-15. The scale starts on F and moves up to G. Measure 13 contains notes F, G, A, B-flat, C, D, E-flat, F. Measure 14 contains notes G, A, B-flat, C, D, E-flat. Measure 15 contains notes G, A, B-flat, C, D, E-flat, G.

Chromatic



Musical notation for Chromatic scale, measures 16-18. The scale starts on F and moves up to G. Measure 16 contains notes F, F-sharp, G, G-flat, A, A-flat, B, B-flat, C, C-sharp, D, D-flat, E, E-flat, F. Measure 17 contains notes F, F-sharp, G, G-flat, A, A-flat, B, B-flat, C, C-sharp, D, D-flat, E, E-flat, F. Measure 18 contains notes F, F-sharp, G, G-flat, A, A-flat, B, B-flat, C, C-sharp, D, D-flat, E, E-flat, F.

SEOBDA All-District Scale Requirement

Eighth / Ninth Grade B flat Clarinet

Concert B Flat (Your C)



Concert E Flat (Your F)



Concert A Flat (Your B flat)



Concert D Flat (Your E flat)



Concert F (Your G)



Chromatic



SEOBDA All-District Scale Requirement

Eighth / Ninth Grade Bass Clarinet

Concert B Flat (Your C)

Musical staff for Concert B Flat (Your C). The staff is in treble clef with a key signature of one flat (B-flat) and a common time signature (C). The scale consists of quarter notes: B-flat, C, D, E, F, G, A, B-flat, C, D, E, F, G, A, B-flat. The notes are grouped into three measures: the first measure contains B-flat, C, D, E, F, G; the second measure contains A, B-flat, C, D, E, F; and the third measure contains G, A, B-flat, followed by a whole rest. Fingerings 1, 2, and 3 are indicated below the notes.

Concert E Flat (Your F)

Musical staff for Concert E Flat (Your F). The staff is in treble clef with a key signature of two flats (E-flat and B-flat) and a common time signature (C). The scale consists of quarter notes: E-flat, F, G, A, B-flat, C, D, E-flat, F, G, A, B-flat, C, D, E-flat. The notes are grouped into three measures: the first measure contains E-flat, F, G, A, B-flat, C; the second measure contains D, E-flat, F, G, A, B-flat; and the third measure contains C, D, E-flat, followed by a whole rest. Fingerings 4, 5, and 6 are indicated below the notes.

Concert A Flat (Your B flat)

Musical staff for Concert A Flat (Your B flat). The staff is in treble clef with a key signature of two flats (B-flat and E-flat) and a common time signature (C). The scale consists of quarter notes: A-flat, B-flat, C, D, E-flat, F, G, A-flat, B-flat, C, D, E-flat, F, G, A-flat. The notes are grouped into three measures: the first measure contains A-flat, B-flat, C, D, E-flat, F; the second measure contains G, A-flat, B-flat, C, D, E-flat; and the third measure contains F, G, A-flat, followed by a whole rest. Fingerings 7, 8, and 9 are indicated below the notes.

Concert D Flat (Your E flat)

Musical staff for Concert D Flat (Your E flat). The staff is in treble clef with a key signature of three flats (B-flat, E-flat, and A-flat) and a common time signature (C). The scale consists of quarter notes: D-flat, E-flat, F, G, A-flat, B-flat, C, D-flat, E-flat, F, G, A-flat, B-flat, C, D-flat. The notes are grouped into three measures: the first measure contains D-flat, E-flat, F, G, A-flat, B-flat; the second measure contains C, D-flat, E-flat, F, G, A-flat; and the third measure contains B-flat, C, D-flat, followed by a whole rest. Fingerings 10, 11, and 12 are indicated below the notes.

Concert F (Your G)

Musical staff for Concert F (Your G). The staff is in treble clef with a key signature of one sharp (F-sharp) and a common time signature (C). The scale consists of quarter notes: F-sharp, G, A, B, C, D, E, F-sharp, G, A, B, C, D, E, F-sharp. The notes are grouped into three measures: the first measure contains F-sharp, G, A, B, C, D; the second measure contains E, F-sharp, G, A, B, C; and the third measure contains D, E, F-sharp, followed by a whole rest. Fingerings 13, 14, and 15 are indicated below the notes.

Chromatic

Musical staff for Chromatic. The staff is in treble clef with a key signature of one sharp (F-sharp) and a 3/4 time signature. The scale consists of eighth notes: F-sharp, G, G-sharp, A, A-flat, B, B-flat, C, C-sharp, D, D-flat, E, E-flat, F, F-sharp, G. The notes are grouped into three measures: the first measure contains F-sharp, G, G-sharp, A, A-flat, B; the second measure contains B-flat, C, C-sharp, D, D-flat, E; and the third measure contains E-flat, F, F-sharp, G, followed by a whole rest. Fingerings 16, 17, and 18 are indicated below the notes.

SEOBDA All-District Scale Requirement

Eighth / Ninth Grade Alto Sax

Concert B Flat (Your G)

Musical notation for Concert B Flat (Your G) scale, measures 1-3. The scale is in G major (one sharp) and common time. Measure 1 contains notes G4, A4, B4, C5, D5, E5, F5, G5. Measure 2 contains notes G5, F5, E5, D5, C5, B4, A4, G4. Measure 3 contains a whole rest.

Concert E Flat (Your C)

Musical notation for Concert E Flat (Your C) scale, measures 4-6. The scale is in C major (no sharps or flats) and common time. Measure 4 contains notes C4, D4, E4, F4, G4, A4, B4, C5. Measure 5 contains notes C5, B4, A4, G4, F4, E4, D4, C4. Measure 6 contains a whole rest.

Concert A Flat (Your F)

Musical notation for Concert A Flat (Your F) scale, measures 7-9. The scale is in F major (one flat) and common time. Measure 7 contains notes F4, G4, A4, Bb4, C5, D5, Eb5, F5. Measure 8 contains notes F5, Eb5, D5, C5, Bb4, A4, G4, F4. Measure 9 contains a whole rest.

Concert D Flat (Your B flat)

Musical notation for Concert D Flat (Your B flat) scale, measures 10-12. The scale is in Bb major (two flats) and common time. Measure 10 contains notes Bb4, C5, D5, Eb5, F5, G5, Ab5, Bb5. Measure 11 contains notes Bb5, Ab5, G5, F5, Eb5, D5, C5, Bb4. Measure 12 contains a whole rest.

Concert F (Your D)

Musical notation for Concert F (Your D) scale, measures 13-15. The scale is in D major (two sharps) and common time. Measure 13 contains notes D4, E4, F4, G4, A4, B4, C5, D5. Measure 14 contains notes D5, C5, B4, A4, G4, F4, E4, D4. Measure 15 contains a whole rest.

Chromatic

Musical notation for Chromatic scale, measures 16-18. The scale is in D major (two sharps) and 3/4 time. Measure 16 contains notes D4, Eb4, E4, Fb4, F4, Gb4, G4, Ab4, A4, Bb4, B4, C5. Measure 17 contains notes C5, Bb4, B4, Ab4, A4, Gb4, G4, Fb4, F4, Eb4, E4, D5. Measure 18 contains a whole rest.

SEOBDA All-District Scale Requirement

Eighth / Ninth Grade Tenor Sax

Concert B Flat (Your C)



Concert E Flat (Your F)



Concert A Flat (Your B flat)



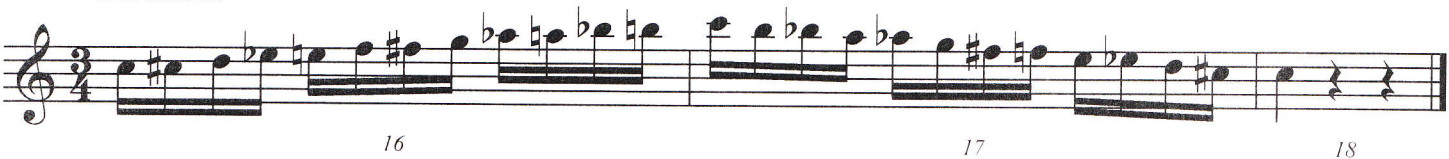
Concert D Flat (Your E flat)



Concert F (Your G)



Chromatic



SEOBDA All-District Scale Requirement

Eighth / Ninth Grade Trumpet

Concert B Flat (Your C)

Musical notation for Concert B Flat (Your C) in C major, 4/4 time. The scale consists of the notes C, D, E, F, G, A, B, A, G, F, E, D, C. The notes are numbered 1 through 3: 1 (C), 2 (D), 3 (E).

Concert E Flat (Your F)

Musical notation for Concert E Flat (Your F) in F major, 4/4 time. The scale consists of the notes F, G, A, Bb, C, D, E, D, C, Bb, A, G, F. The notes are numbered 4 through 6: 4 (F), 5 (G), 6 (A).

Concert A Flat (Your B flat)

Musical notation for Concert A Flat (Your B flat) in Bb major, 4/4 time. The scale consists of the notes Bb, C, D, Eb, F, G, A, G, F, Eb, D, C, Bb. The notes are numbered 7 through 9: 7 (Bb), 8 (C), 9 (D).

Concert D Flat (Your E flat)

Musical notation for Concert D Flat (Your E flat) in Eb major, 4/4 time. The scale consists of the notes Eb, F, G, Ab, Bb, C, D, C, Bb, Ab, G, F, Eb. The notes are numbered 10 through 12: 10 (Eb), 11 (F), 12 (G).

Concert F (Your G)

Musical notation for Concert F (Your G) in G major, 4/4 time. The scale consists of the notes G, A, B, C, D, E, F#, E, D, C, B, A, G. The notes are numbered 13 through 15: 13 (G), 14 (A), 15 (B).

Chromatic

Musical notation for Chromatic in 3/4 time. The scale consists of the notes C, C#, C, C#, C, C#, B, Bb, B, Bb, A, Ab, A, Ab, G, G#, G, G#, F, F#, F, F#, E, Eb, E, Eb, D, Db, D, Db, C. The notes are numbered 16 through 18: 16 (C), 17 (C#), 18 (C).

SEOBDA All-District Scale Requirement

Eighth / Ninth Grade French Horn

Concert B Flat (Your F)



Concert E Flat (Your B flat)



Concert A Flat (Your E flat)



Concert D Flat (Your A flat)



Concert F (Your C)



Chromatic



SEOBDA All-District Scale Requirement

Eighth / Ninth Grade Trombone

Concert B Flat

1 2 3

Concert E Flat

4 5 6

Concert A Flat

7 8 9

Concert D Flat

10 11 12

Concert F Flat

13 14 15

Chromatic

16 17 18

SEOBDA All-District Scale Requirement

Eighth / Ninth Grade Baritone T.C.

Concert B Flat (Your C)

Musical staff for Concert B Flat (Your C). The staff is in treble clef with a key signature of one flat (B-flat) and a common time signature (C). The scale consists of the notes B-flat, C, D, E, F, G, A, B-flat. The notes are grouped into three measures: the first measure contains B-flat, C, D, E; the second measure contains F, G, A, B-flat; and the third measure contains a whole rest. The measure numbers 1, 2, and 3 are printed below the staff.

Concert E Flat (Your F)

Musical staff for Concert E Flat (Your F). The staff is in treble clef with a key signature of two flats (E-flat, B-flat) and a common time signature (C). The scale consists of the notes E-flat, F, G, A, B-flat, C, D, E-flat. The notes are grouped into three measures: the first measure contains E-flat, F, G, A; the second measure contains B-flat, C, D, E-flat; and the third measure contains a whole rest. The measure numbers 4, 5, and 6 are printed below the staff.

Concert A Flat (Your B flat)

Musical staff for Concert A Flat (Your B flat). The staff is in treble clef with a key signature of three flats (A-flat, E-flat, B-flat) and a common time signature (C). The scale consists of the notes A-flat, B-flat, C, D, E-flat, F, G, A-flat. The notes are grouped into three measures: the first measure contains A-flat, B-flat, C, D; the second measure contains E-flat, F, G, A-flat; and the third measure contains a whole rest. The measure numbers 7, 8, and 9 are printed below the staff.

Concert D Flat (Your E flat)

Musical staff for Concert D Flat (Your E flat). The staff is in treble clef with a key signature of four flats (D-flat, A-flat, E-flat, B-flat) and a common time signature (C). The scale consists of the notes D-flat, E-flat, F, G, A-flat, B-flat, C, D-flat. The notes are grouped into three measures: the first measure contains D-flat, E-flat, F, G; the second measure contains A-flat, B-flat, C, D-flat; and the third measure contains a whole rest. The measure numbers 10, 11, and 12 are printed below the staff.

Concert F (Your G)

Musical staff for Concert F (Your G). The staff is in treble clef with a key signature of one sharp (F) and a 3/4 time signature. The scale consists of the notes F, G, A, B, C, D, E, F. The notes are grouped into three measures: the first measure contains F, G, A, B; the second measure contains C, D, E, F; and the third measure contains a whole rest. The measure numbers 13, 14, and 15 are printed below the staff.

Chromatic

Musical staff for Chromatic. The staff is in treble clef with a key signature of one sharp (F) and a 3/4 time signature. The scale consists of the notes F, F-sharp, G, G-flat, A, A-flat, B, B-flat, C, C-sharp, D, D-flat, E, E-flat, F. The notes are grouped into three measures: the first measure contains F, F-sharp, G, G-flat; the second measure contains A, A-flat, B, B-flat; and the third measure contains C, C-sharp, D, D-flat, E, E-flat, F. The measure numbers 16, 17, and 18 are printed below the staff.

SEOBDA All-District Scale Requirement

Eighth / Ninth Grade Euphonium

Concert B Flat

1 2 3

Concert E Flat

4 5 6

Concert A Flat

7 8 9

Concert D Flat

10 11 12

Concert F

13 14 15

Chromatic

16 17 18

SEOBDA All-District Scale Requirement

Eighth / Ninth Grade Tuba

Concert B Flat

Musical notation for Concert B Flat scale, measures 1-3. The scale is written in bass clef with a key signature of two flats (B-flat and E-flat) and a common time signature (C). The notes are B-flat, C, D, E-flat, F, G, A, B-flat, C, D, E-flat, F, G, A, B-flat, C. Fingerings 1, 2, and 3 are indicated below the notes.

Concert E Flat

Musical notation for Concert E Flat scale, measures 4-6. The scale is written in bass clef with a key signature of three flats (B-flat, E-flat, and A-flat) and a common time signature (C). The notes are B-flat, C, D, E-flat, F, G, A-flat, B-flat, C, D, E-flat, F, G, A-flat, B-flat, C. Fingerings 4, 5, and 6 are indicated below the notes.

Concert A Flat

Musical notation for Concert A Flat scale, measures 7-9. The scale is written in bass clef with a key signature of three flats (B-flat, E-flat, and A-flat) and a common time signature (C). The notes are B-flat, C, D, E-flat, F, G, A-flat, B-flat, C, D, E-flat, F, G, A-flat, B-flat, C. Fingerings 7, 8, and 9 are indicated below the notes.

Concert D Flat

Musical notation for Concert D Flat scale, measures 10-12. The scale is written in bass clef with a key signature of four flats (B-flat, E-flat, A-flat, and D-flat) and a common time signature (C). The notes are B-flat, C, D, E-flat, F, G, A-flat, B-flat, C, D, E-flat, F, G, A-flat, B-flat, C. Fingerings 10, 11, and 12 are indicated below the notes.

Concert F

Musical notation for Concert F scale, measures 13-15. The scale is written in bass clef with a key signature of one flat (B-flat) and a 3/4 time signature. The notes are B-flat, C, D, E, F, G, A, B, C, D, E, F, G, A, B, C. Fingerings 13, 14, and 15 are indicated below the notes.

Chromatic

Musical notation for Chromatic scale, measures 16-18. The scale is written in bass clef with a key signature of one flat (B-flat) and a 3/4 time signature. The notes are B-flat, B-natural, C, C-sharp, D, D-sharp, E, E-flat, F, F-sharp, G, G-sharp, A, A-flat, B, B-flat. Fingerings 16, 17, and 18 are indicated below the notes.