

# Tunes on the first two strings

## Skip to My Lou

Musical notation for the first two strings of 'Skip to My Lou'. The piece is in 4/4 time. The first string part (top staff) begins with a treble clef and a 4/4 time signature. The melody consists of quarter notes: G4, A4, B4, C5, B4, A4, G4, F4, E4, D4, C4. The second string part (bottom staff) provides a simple accompaniment with quarter notes: G4, A4, B4, C5, B4, A4, G4, F4, E4, D4, C4. The piece concludes with a double bar line.

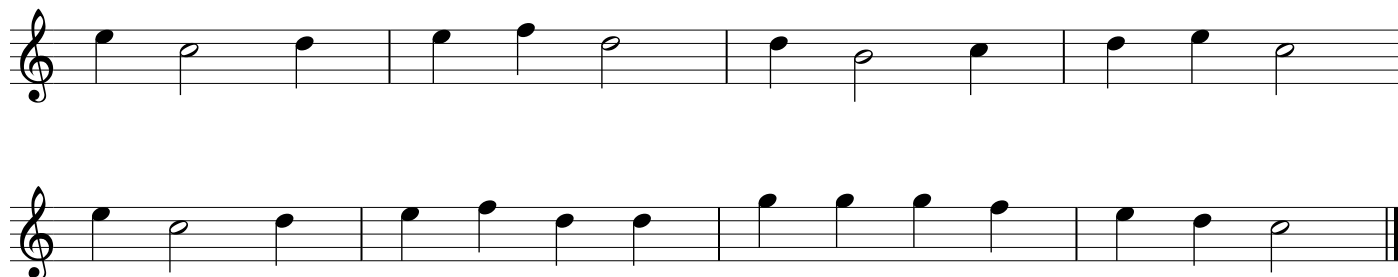
## Dreydl Song

Musical notation for the first two strings of 'Dreydl Song'. The piece is in 4/4 time. The first string part (top staff) begins with a treble clef. The melody consists of quarter notes: G4, A4, B4, C5, B4, A4, G4, F4, E4, D4, C4. The second string part (bottom staff) provides a simple accompaniment with quarter notes: G4, A4, B4, C5, B4, A4, G4, F4, E4, D4, C4. The piece concludes with a double bar line.

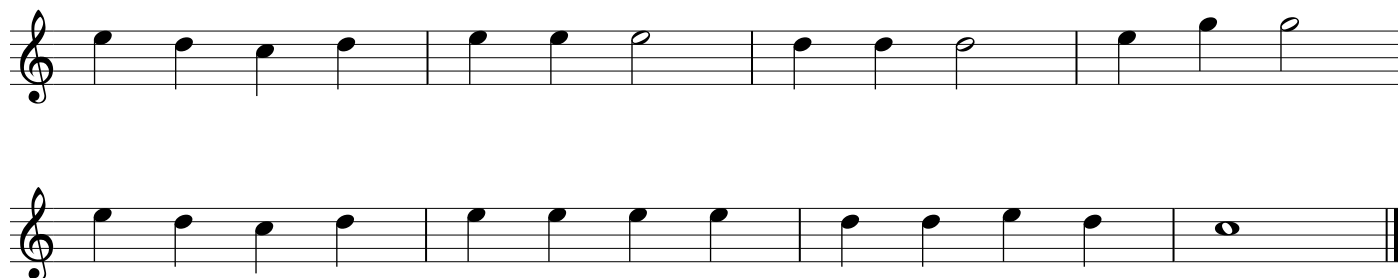
## Love Somebody

Musical notation for the first two strings of 'Love Somebody'. The piece is in 4/4 time. The first string part (top staff) begins with a treble clef. The melody consists of quarter notes: G4, A4, B4, C5, B4, A4, G4, F4, E4, D4, C4. The second string part (bottom staff) provides a simple accompaniment with quarter notes: G4, A4, B4, C5, B4, A4, G4, F4, E4, D4, C4. The piece concludes with a double bar line.

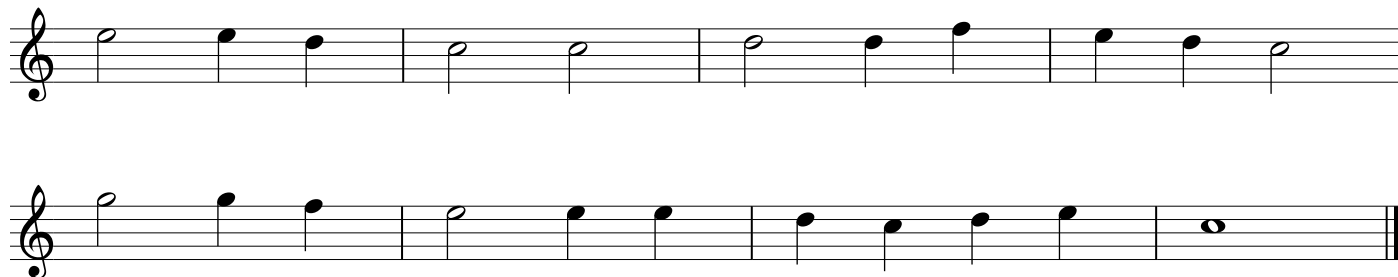
## Shoo Fly



## Mary Had a Little Lamb



## Go Tell Aunt Rhody



## Boil Them Cabbage Down

