

# DATA ADVISORS & MAPPING

# INTEGRITY MAPPING LLC

WE ASSURE THE ACCURACY, CONSISTENCY AND MAINTENANCE OF PIPELINE CONSTRUCTION DATA BY USING DATA EXPERTS AND SOFTWARES DESIGNED TO CAPTURE, STORE, MANIPULATE, ANALYZE AND MANAGE GEOGRAPHICAL DATA

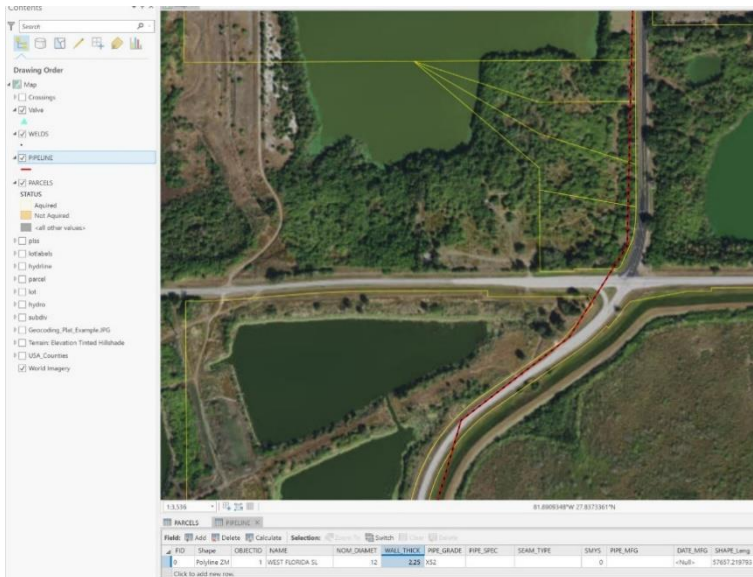
PIPELINE CONSTRUCTION DATA SERVICES

## WHAT WE DO

- ✓ LOCATE OPTIMAL PIPELINE ROUTE
- ✓ GPS
- ✓ CREATE KML/KMZ FILES
- ✓ AUDIT/QA DOCUMENTATION
- ✓ IDENTIFY OPERATOR DATA REQUIREMENTS
- ✓ MANAGE PROJECT DATA
- ✓ CREATE PAPER AND ONLINE MAPS

## WHY USE US?

HAVING WORKED FOR OPERATORS FOR OVER A DECADE WE UNDERSTAND THE IMPORTANCE OF COLLECTING ACCURATE DATA AT THE CONSTRUCTION PHASE OF A PROJECT. WE WILL ENSURE OPERATORS RECEIVE USABLE DATA THAT CAN BE TRUSTED FOR YEARS TO COME. WE KNOW PODS, WE KNOW DATA MODELS



**CONTACT US TODAY FOR A DEMO**

281.773.0508 · [WWW.INTEGRITYMAPPING.COM](http://WWW.INTEGRITYMAPPING.COM)