

725 E 1st Street, Gregory, SD Commercial Building

Looking for the perfect workshop space? Look no further!

This new steel-framed shop, located at 725 East 1st Street in Gregory, SD, offers an ideal combination of space, functionality, and convenience. Situated in a commercial zone (NA-D1), this property is primed for business activities, whether it's for personal projects or professional endeavors.

Spanning an impressive lot size of 175' x 295' square feet, there's plenty of room for expansion or outdoor work areas. The 40' x 80' steel-framed structure features two 12' x 12' shop doors, two walk-in doors, and two windows, providing easy access and ample natural light. With 16' sidewalls, you'll have the vertical space needed for equipment storage, and more.

Constructed in 2023, this modern facility includes a convenient 3/4 bath, ensuring comfort and functionality right on-site. Plus, with a reliable propane-forced air heating system, you can maintain a comfortable work environment year-round.

Don't miss out on this fantastic opportunity to own a versatile workshop space in a prime location. Schedule a viewing today and take the first step toward realizing your vision!

Price: 239,000



150'

268.10'

268.19'

150'

41.77'

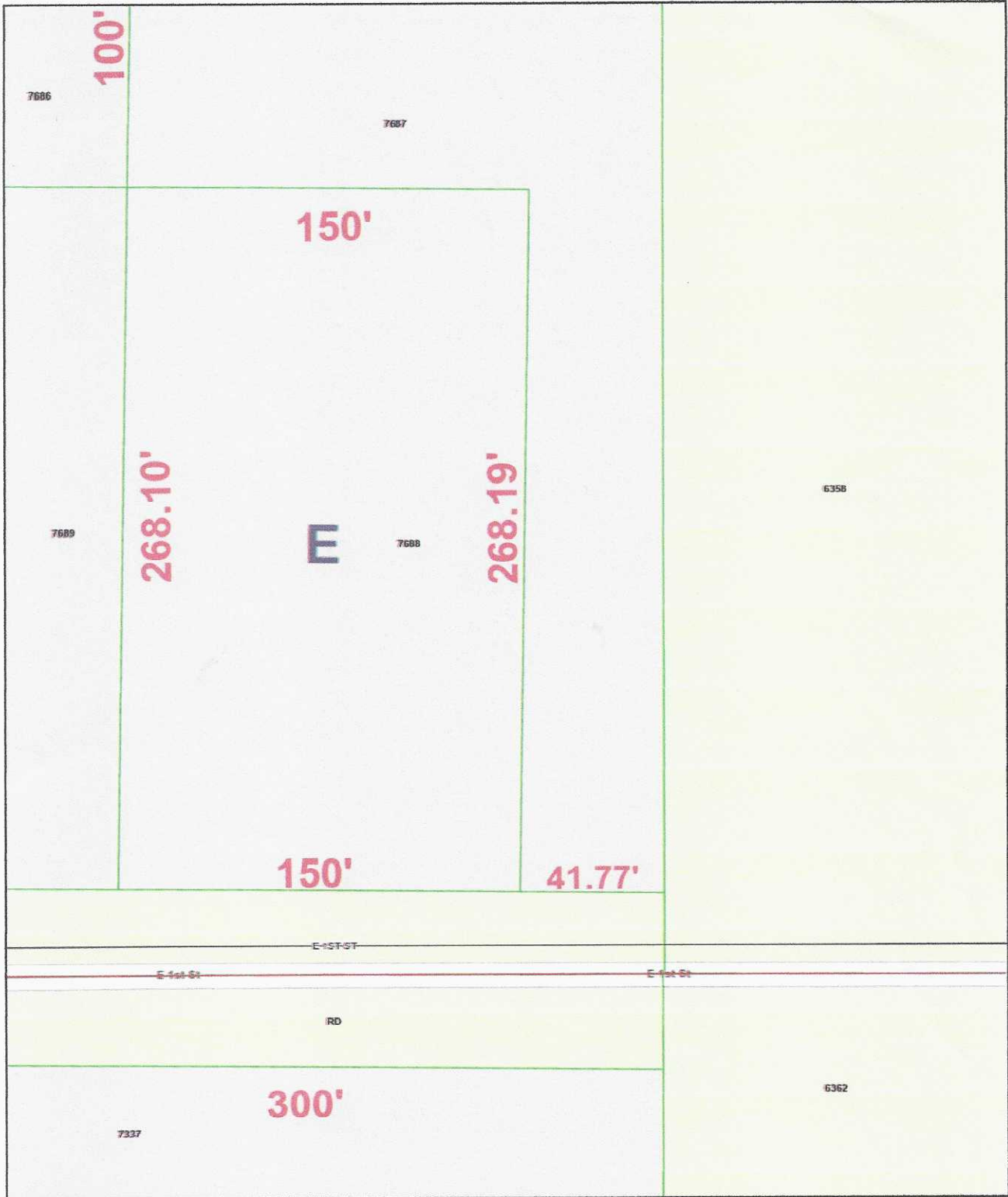
7689

E

7688

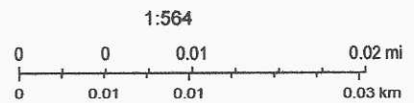
7687

GREGORY COUNTY WEB VEIWER



4/10/2024, 10:55:07 AM

GREGORY_PLAT SECTIONS CITY LIMITS
 GRANDVIEW TOWNSHIPS ROADS
 PARCELS — GRAVEL



Esri Community Maps Contributors, South Dakota Game Fish and Parks, © OpenStreetMap, Microsoft, Esri, TomTom, Garmin, SafeGraph, GeoTechnologies, Inc, METI/ NASA, USGS, EPA, NPS, US Census Bureau, USDA, USFWS



**725 E 1st Street,
Gregory, SD**

300ft

416.43.226 Degrees