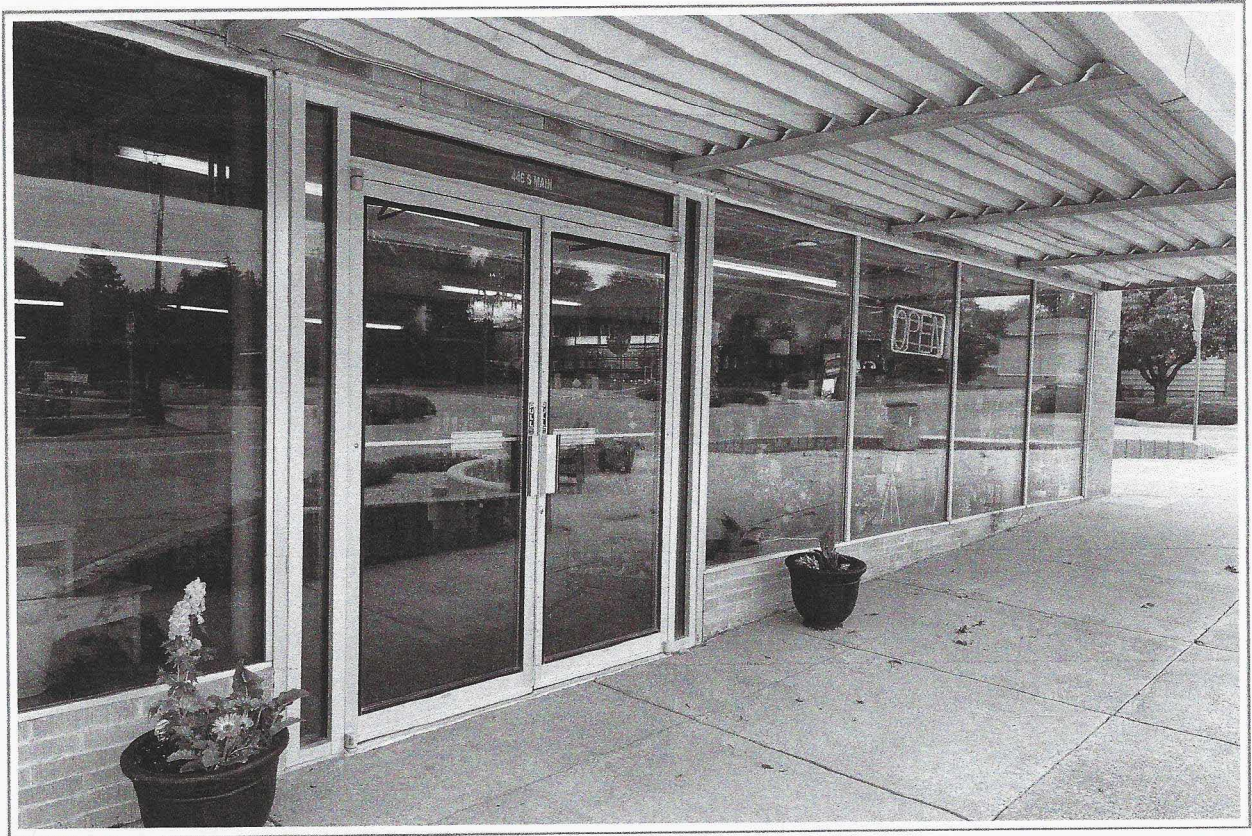


446 S Main St



1940

Frank Wilson sold the lot to Russ Read. Bert Smith operated a small car repair shop on this location.

1945

Lot purchased by Charles Grossenburg who constructed the present building as an 8-lane, manual pin-set bowling alley, Grossenburg Bowling Alley.

1946

Rosebud Lanes and Coffee Shop

1950

Rosebud Lanes

1952

Rosebud Lanes Lunch Counter (original lunch counter has been relocated to Grossenburg Implement)

1956

Charles Allison and Pete Arris moved Winner Gas & Electric (an appliance, heating, plumbing, and cooling business) into this location.

1987

Steve and Kathy Nielsen purchase Winner Gas and Electric. Steve Nielsen is the late Charles Grossenburgs' grandson.

1999

Winner Gas, Electric & Furniture begins selling furniture,
too.

2003

Winner Gas, Electric & Furniture celebrates their 16th
Anniversary with the addition of Kathy's Corner-"A
Treasure Trove of Gift Ideas"

2022

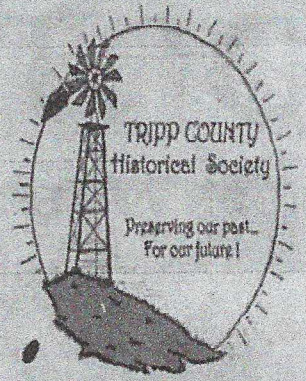
Accent Florals @JNS Cornerstore. Jon and Nelle
Schlomer purchase Winner Gas and Electric from Steve
and Kathy Nielsen; as well as Accent Florals by KC from
Dennis and Kathy Calhoon and move the flower shop
into the building.

2023

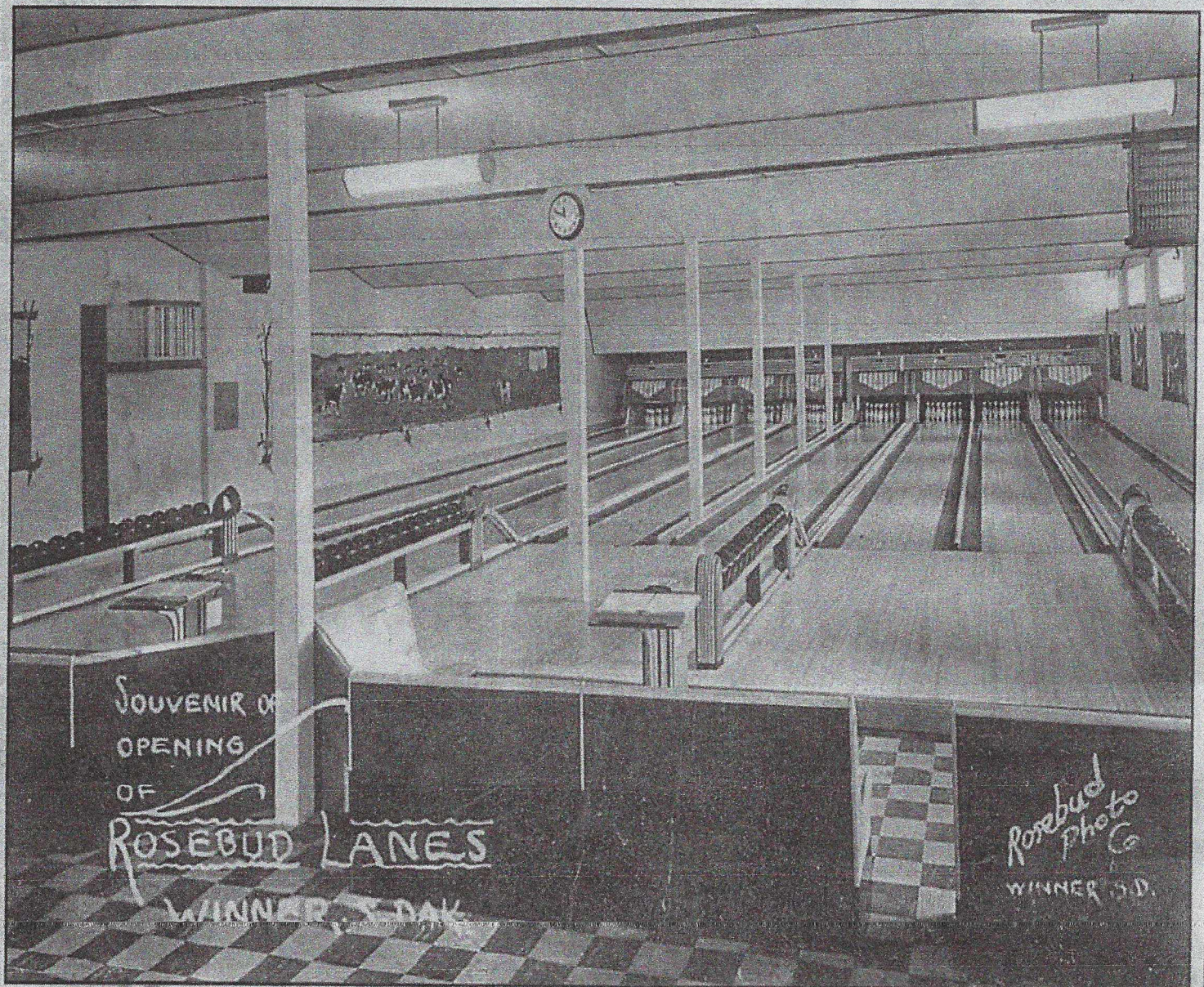
A complete remodel of the entire building results in the
addition of JNS Cornerstore Reception Hall (a hall that
can seat up to 120 people) and Cornerstore Golf (an
indoor golf simulator featuring over 500 courses
worldwide)

Tripp County Historical Society

Remember when...



The Tripp County Historical Society will be providing pictures to make this column possible. If you have a picture or early story you would like to share it can be dropped off at the Advocate office. Pictures can be returned to you. It is difficult researching these old photos and if you have corrections they are also welcome. Please help us preserve history.



Rosebud Lanes

Rosebud Lanes in Winner, SD, in the 1950's. C.J. Grossenburg owned the building at the time. Winner Gas & Electric is now located in that building.