

GRAZING LAND FOR SALE 2875/ACRE

🌿 1,769 Acres of Grazing Land on the Missouri River 🌊

Here's your chance to own 1,769 acres of prime grazing land with breathtaking views of the Missouri River. This property is set up for both productivity and recreation.

💧 Water & Infrastructure

The land features 1 artesian well and 12 tire tank locations supplied by Tripp County Rural Water hydrants—making livestock management smooth and reliable.

🐄 Cattle Capacity

This ranch will comfortably run about 250 cow/calf pairs for 5 months. Multiple fenced pastures are already in place, allowing for efficient rotational grazing.

🦌 Recreation

Beyond ranching, the property offers excellent mule deer and whitetail deer hunting, making it a true sportsman's paradise.

If you've been waiting for the perfect blend of ranching opportunity and recreational enjoyment, this is it. Don't let this one get away!



- ✓ 1769 Acres of Grazing Land
- ✓ 12 Tire Tanks + 1 Artesian Well
- ✓ Along the Missouri River
- ✓ Fenced for Rotation Grazing

shippyrealty.com

**SHIPPY
REALTY**
& AUCTION

605-842-3212



EQUAL HOUSING
OPPORTUNITY



MULTIPLE LISTING SERVICE
MLS

Phone

605-842-3212



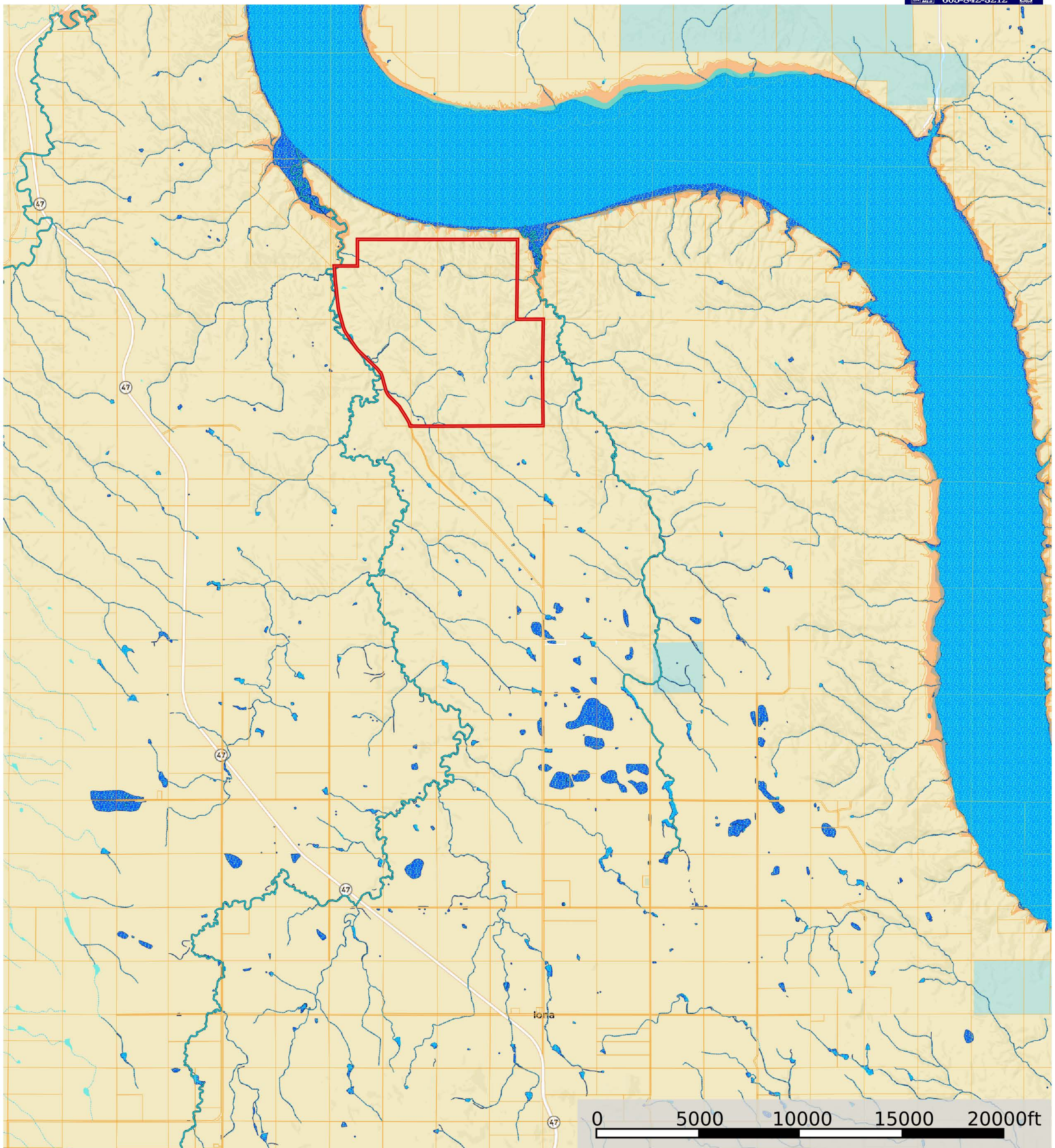
Address

349 E 2nd Street, Winner, SD



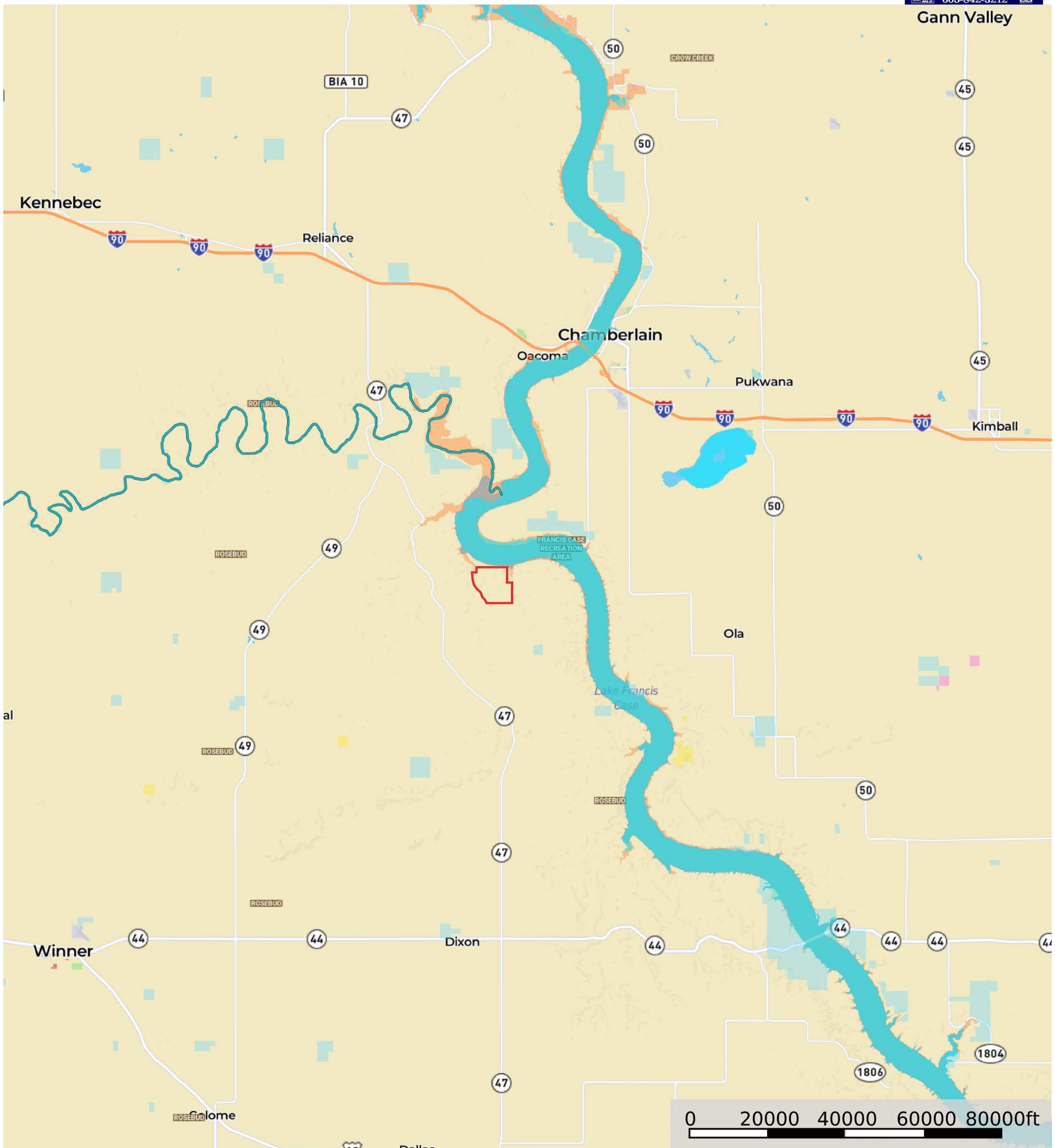
Lyman County, SD Acreage

Lyman County, South Dakota, 1769.5 AC +/-



Lyman County, SD Acreage

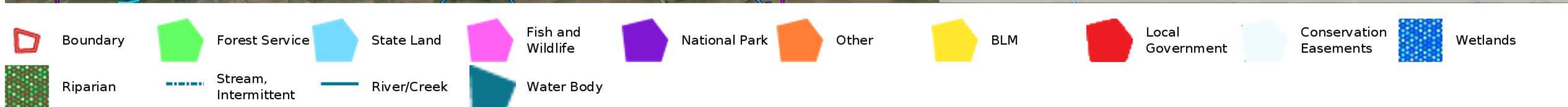
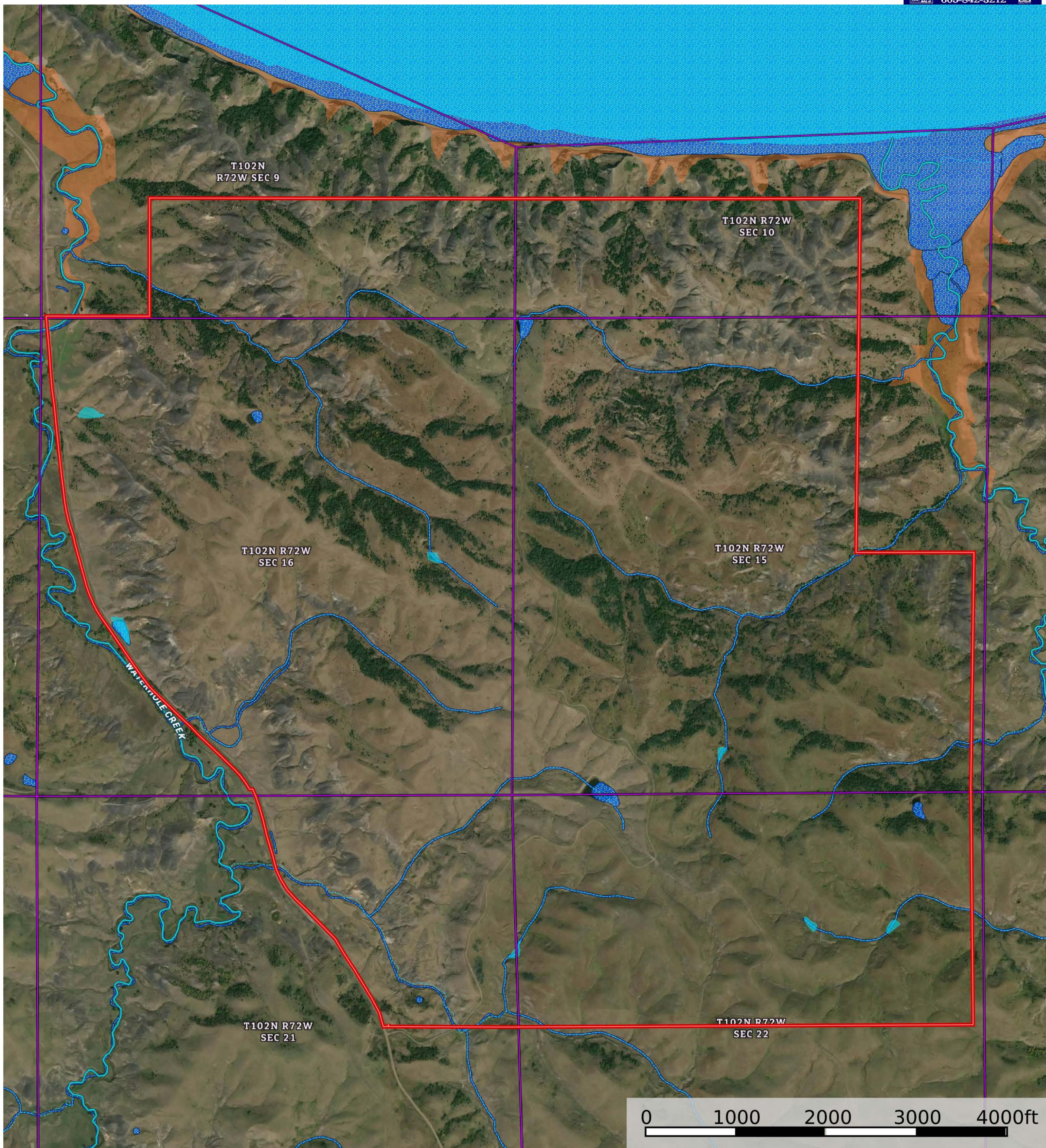
Lyman County, South Dakota, 1769.5 AC +/-



- Boundary
- Forest Service
- State Land
- Fish and Wildlife
- National Park
- Other
- BLM
- Local Government
- Wetlands
- Riparian
- Stream, Intermittent
- River/Creek
- Water Body

Lyman County, SD Acreage

Lyman County, South Dakota, 1769.5 AC +/-





		ACRES	CAPABILITIES	WAPI		
CODE	DESCRIPTION	ACRES	%	CPI	NCCPI	CAP
S503F	Sansarc-Opal-Promise clays, 6 to 35 percent slopes	1030.39	58.54%	29	17	7e
S501F	Badland-Sansarc-Opal complex, 6 to 35 percent slopes	504.89	28.68%	16	10	7e
SbE	Sansarc-Opal clays, 9 to 25 percent slopes	133.61	7.59%	22	13	7e
RsE	Rock outcrop-Sansarc complex, 9 to 40 percent slopes	59.73	3.39%	3	-	8s
BuA	Bullcreek clay, 0 to 6 percent slopes	27.47	1.56%	13	22	6s
Wd	Wendte silty clay, channeled	2.27	0.13%	33	17	6w
Pm	Promise clay, 0 to 3 percent slopes	1.78	0.1%	69	20	3s
		23.65 Average		14.19 Average		7.01 Cap. Average

Lyman County, SD Acreage

Lyman County, South Dakota, 1769.5 AC +/-

