

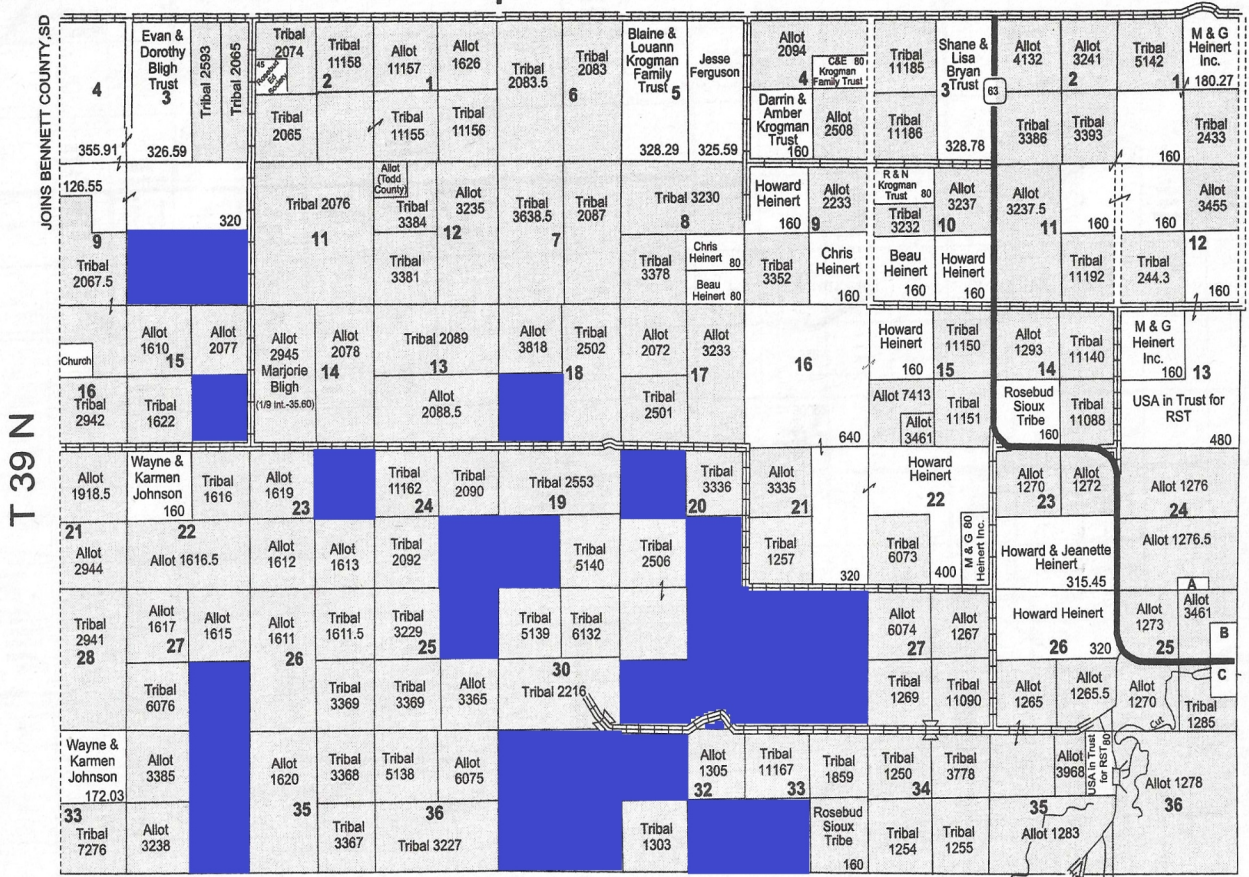
Map 1	Map 2	Map 3	Map 4	Map 5
Map 6	Map 7	Map 8	Map 9	Map 10
Map 11	Map 12	Map 13	Map 14	Map 15
Map 16	Map 17	Map 18	Map 19	Map 20



R 33 W

R 32 W

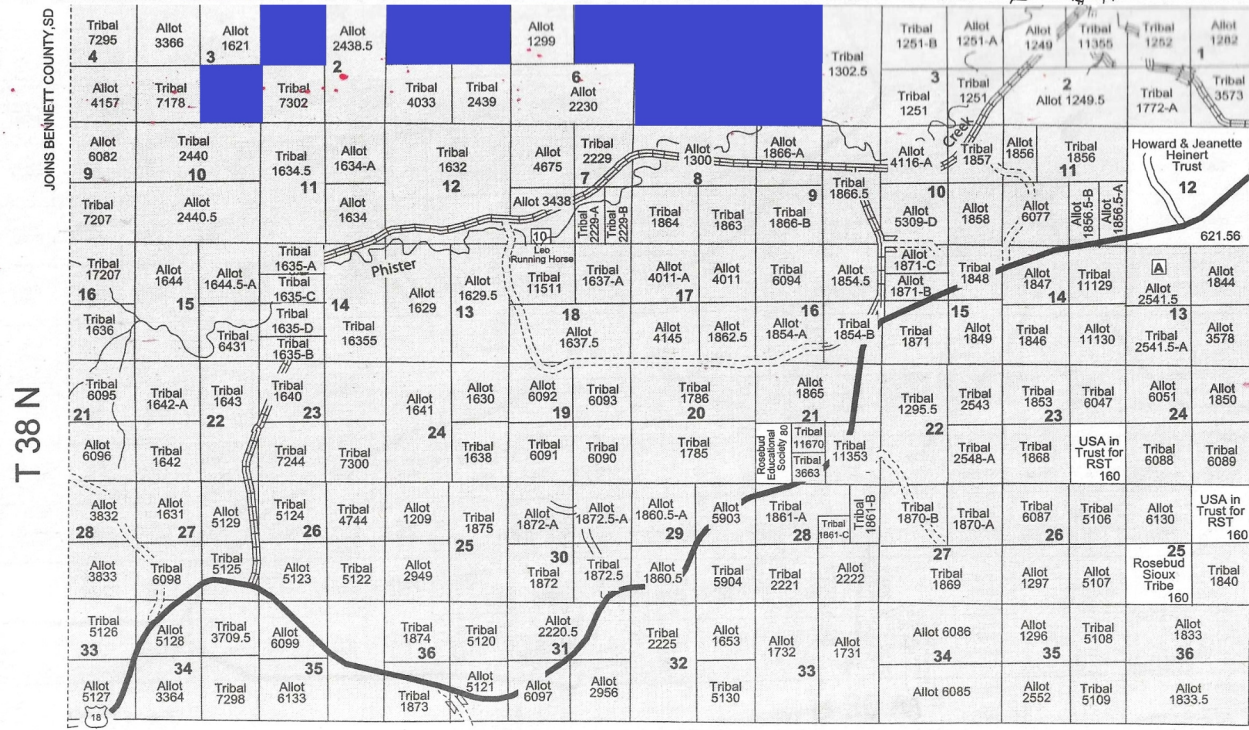
JOINS MELLETTE COUNTY, SD



JOINS MAP 2

MAP 1

Map 1	Map 2	Map 3	Map 4	Map 5
Map 6	Map 7	Map 8	Map 9	Map 10
Map 11	Map 12	Map 13	Map 14	Map 15
Map 16	Map 17	Map 18	Map 19	Map 20



JOINS MAP 7

MAP 6

Small Tracts
Section 13E A Sonnie Waln-Jenssen - 10

JOINS MAP 11

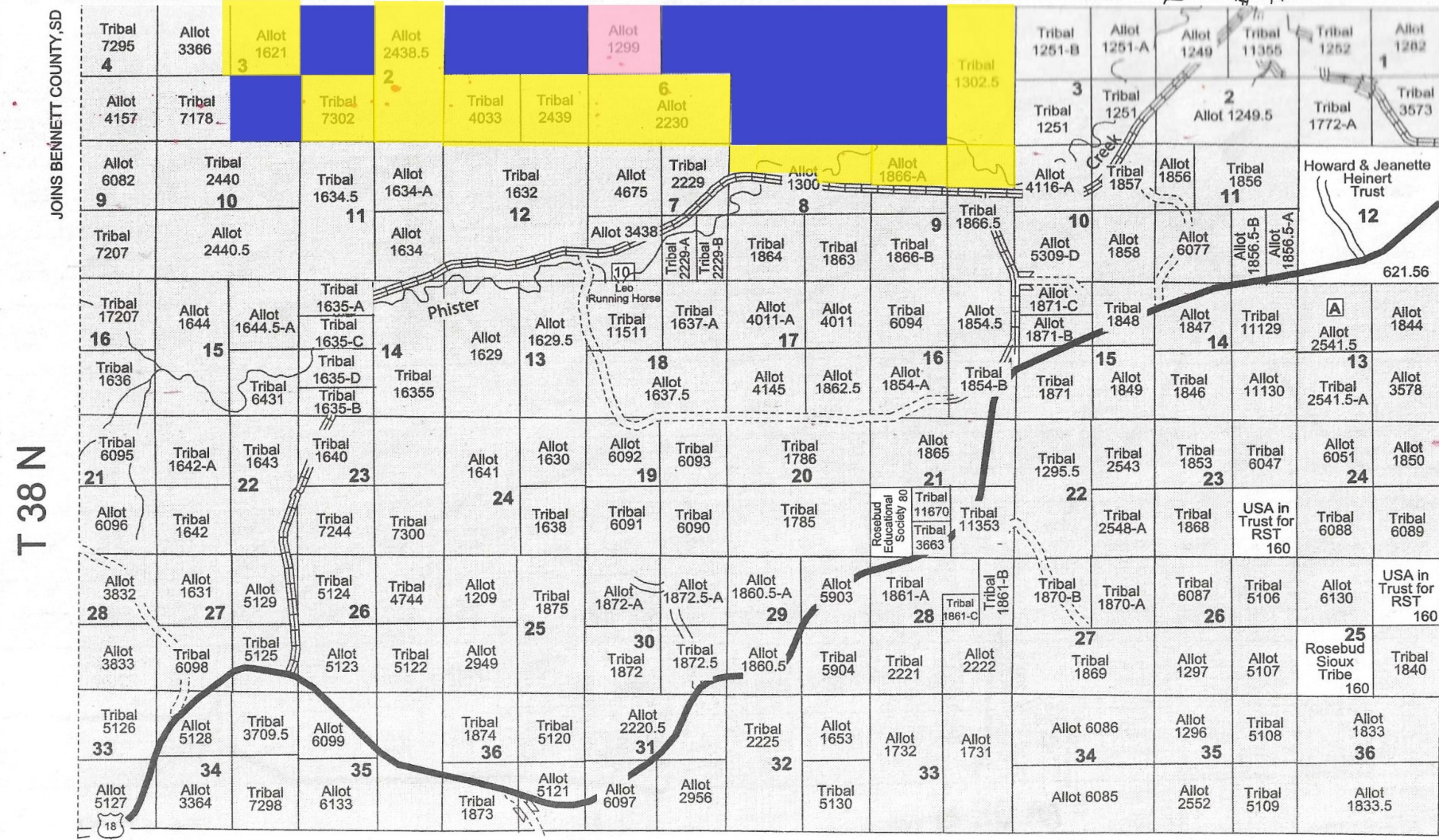
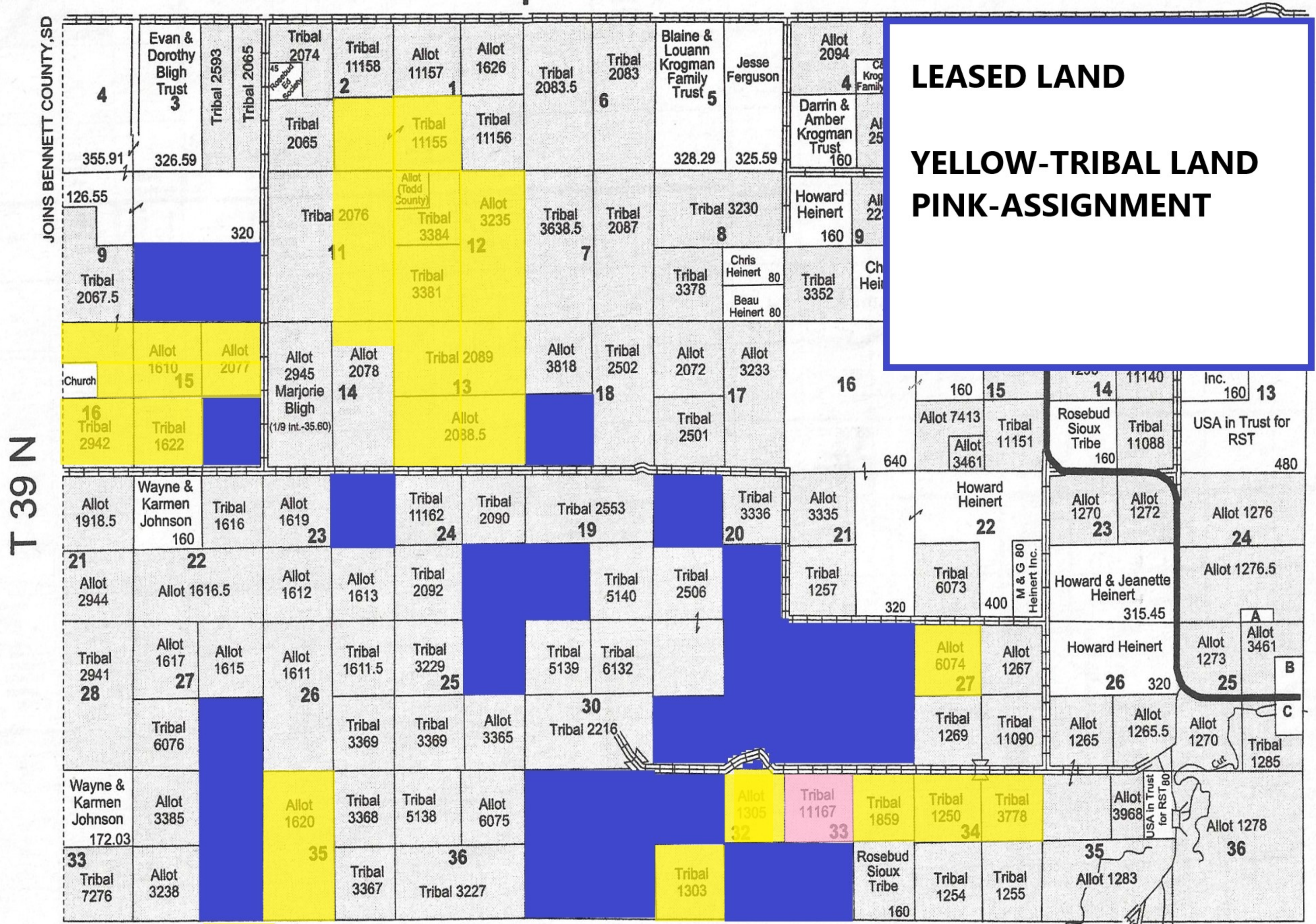
Map 1	Map 2	Map 3	Map 4	Map 5
Map 6	Map 7	Map 8	Map 9	Map 10
Map 11	Map 12	Map 13	Map 14	Map 15
Map 16	Map 17	Map 18	Map 19	Map 20



R 33 W

R 32 W

JOINS MELLETTE COUNTY, SD



Small Tracts
Section 13E A Sonnie Waln-Jenssen - 10

Map 1	Map 2	Map 3	Map 4	Map 5
Map 6	Map 7	Map 8	Map 9	Map 10
Map 11	Map 12	Map 13	Map 14	Map 15
Map 16	Map 17	Map 18	Map 19	Map 20

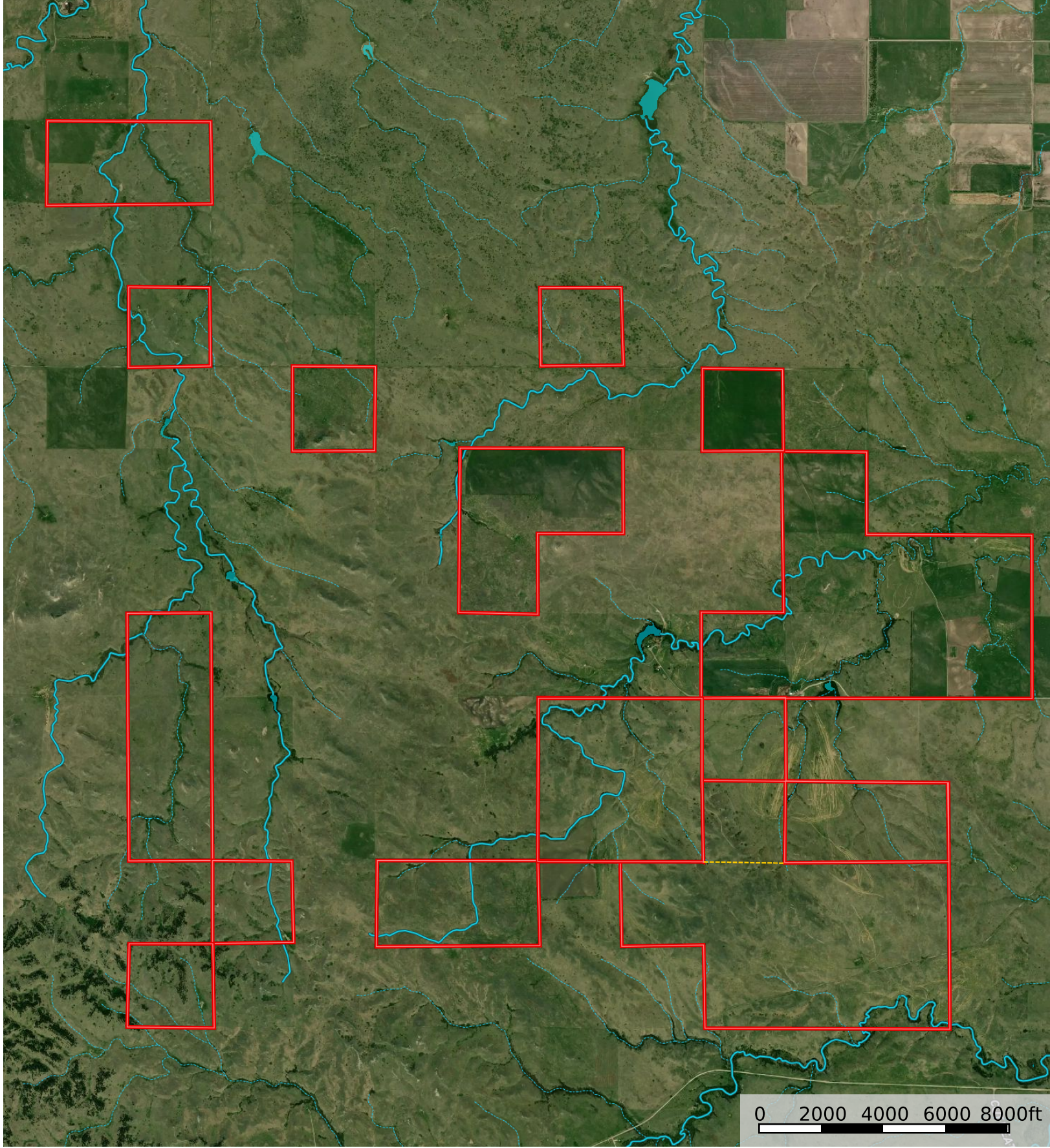
JOINS MAP 2

MAP 1

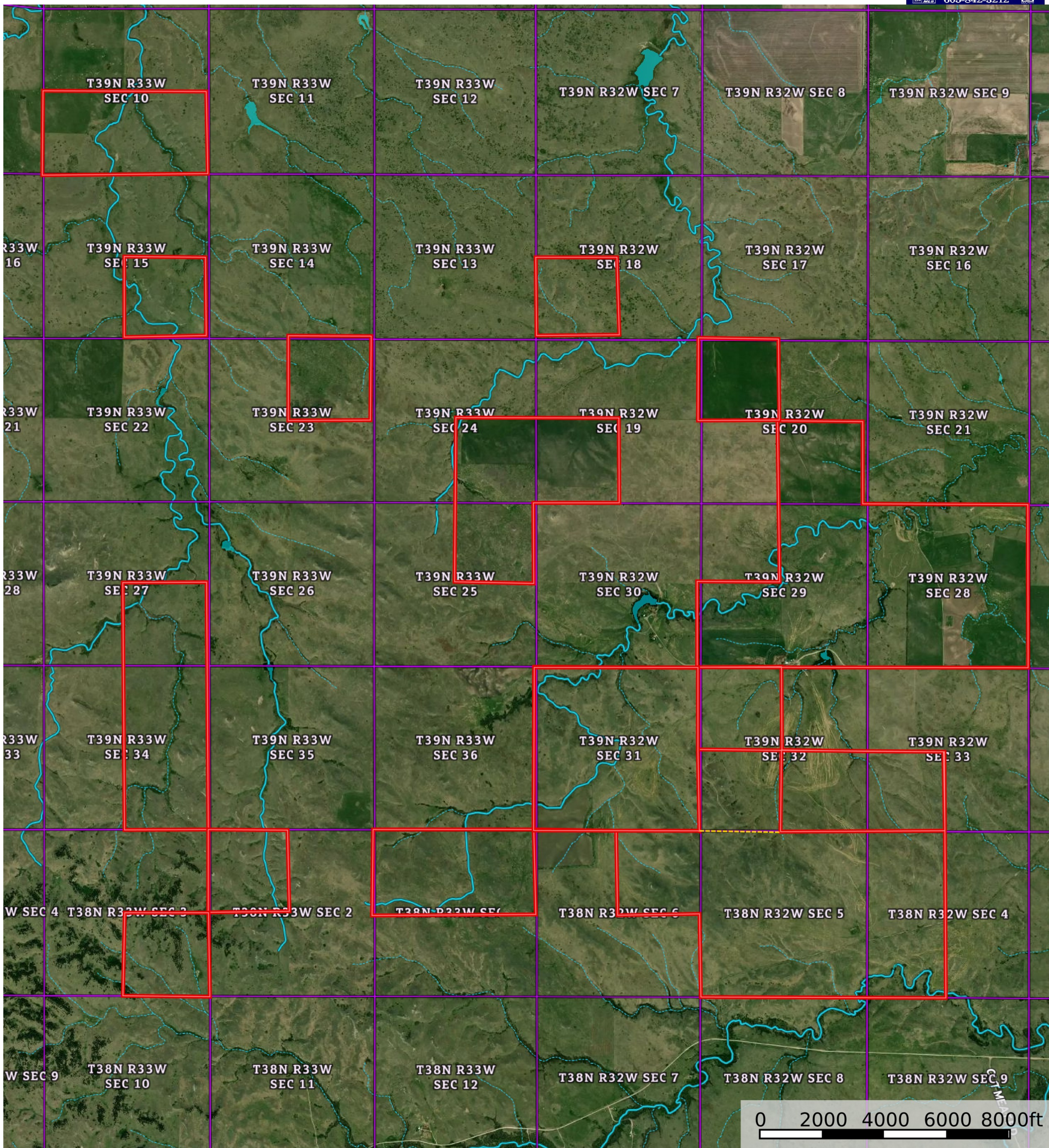
JOINS MAP 7

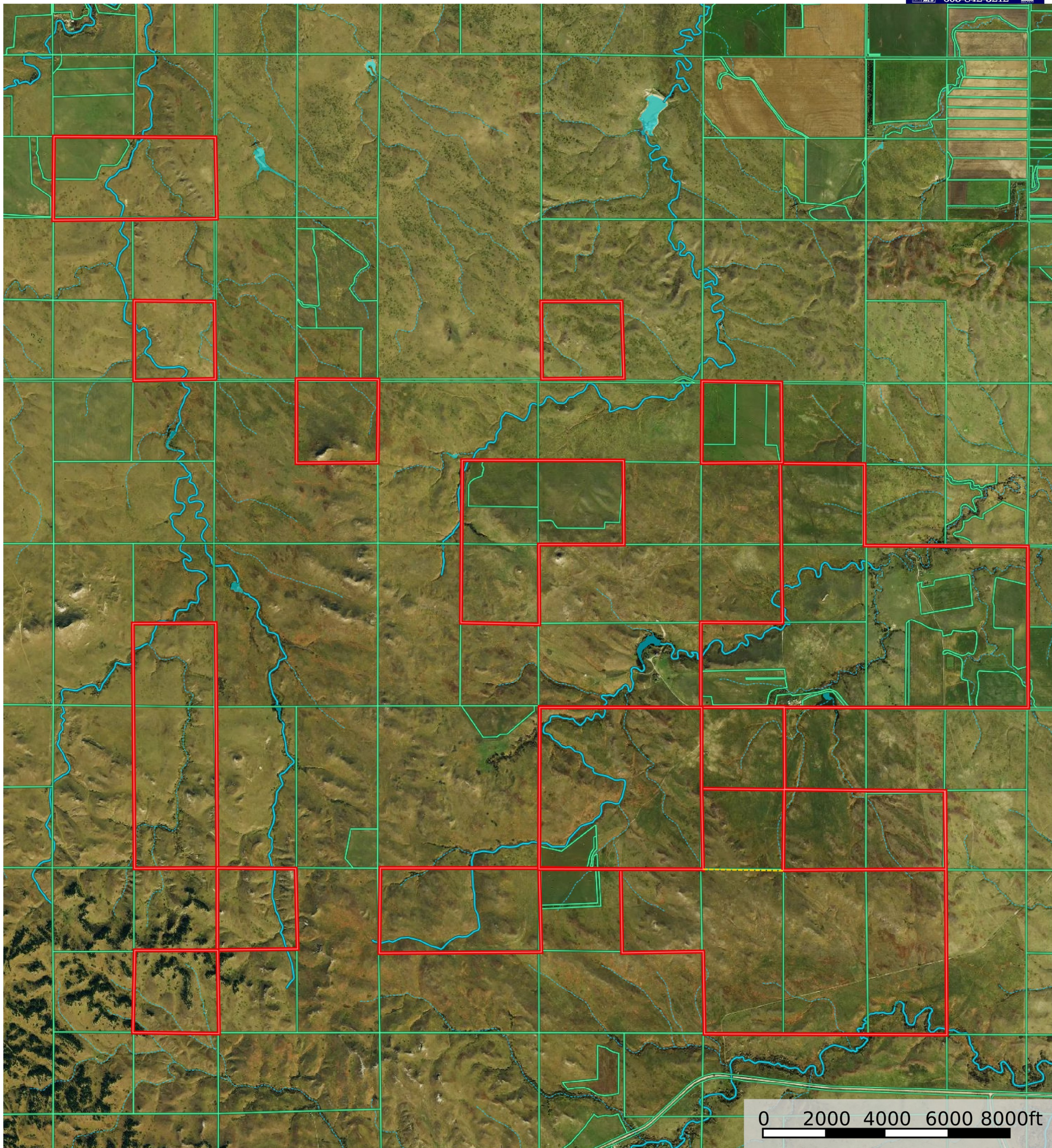
MAP 6

JOINS MAP 11

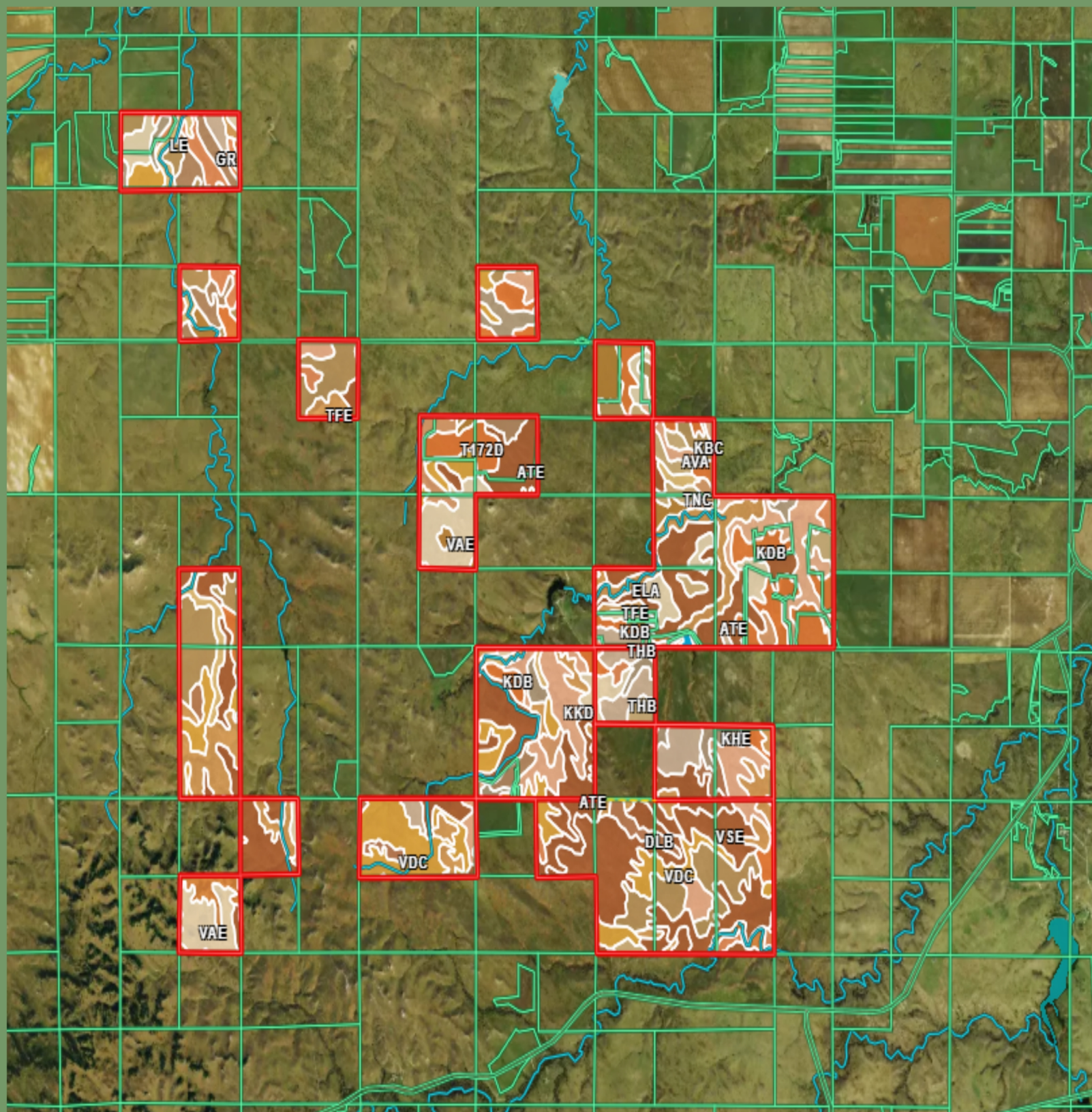


- Road / Trail
- Boundary
- - - - Stream, Intermittent
- River/Creek
- Water Body





--- Road / Trail □ Boundary -.-.- Stream, Intermittent — River/Creek ■ Water Body



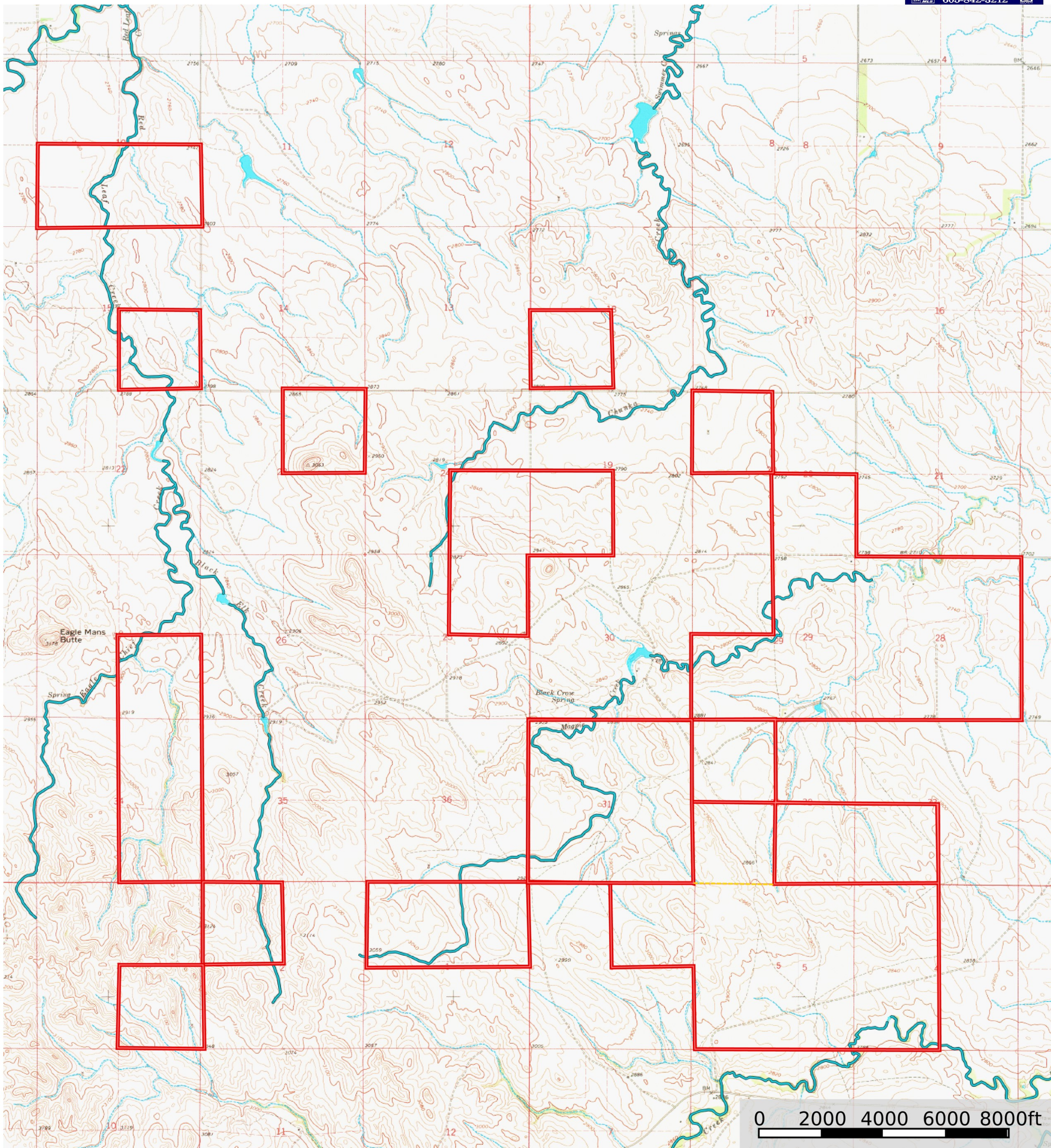
Totals
6040.39 ac ⓘ

37.66 CPI
Average

27.76 NCCPI
Average

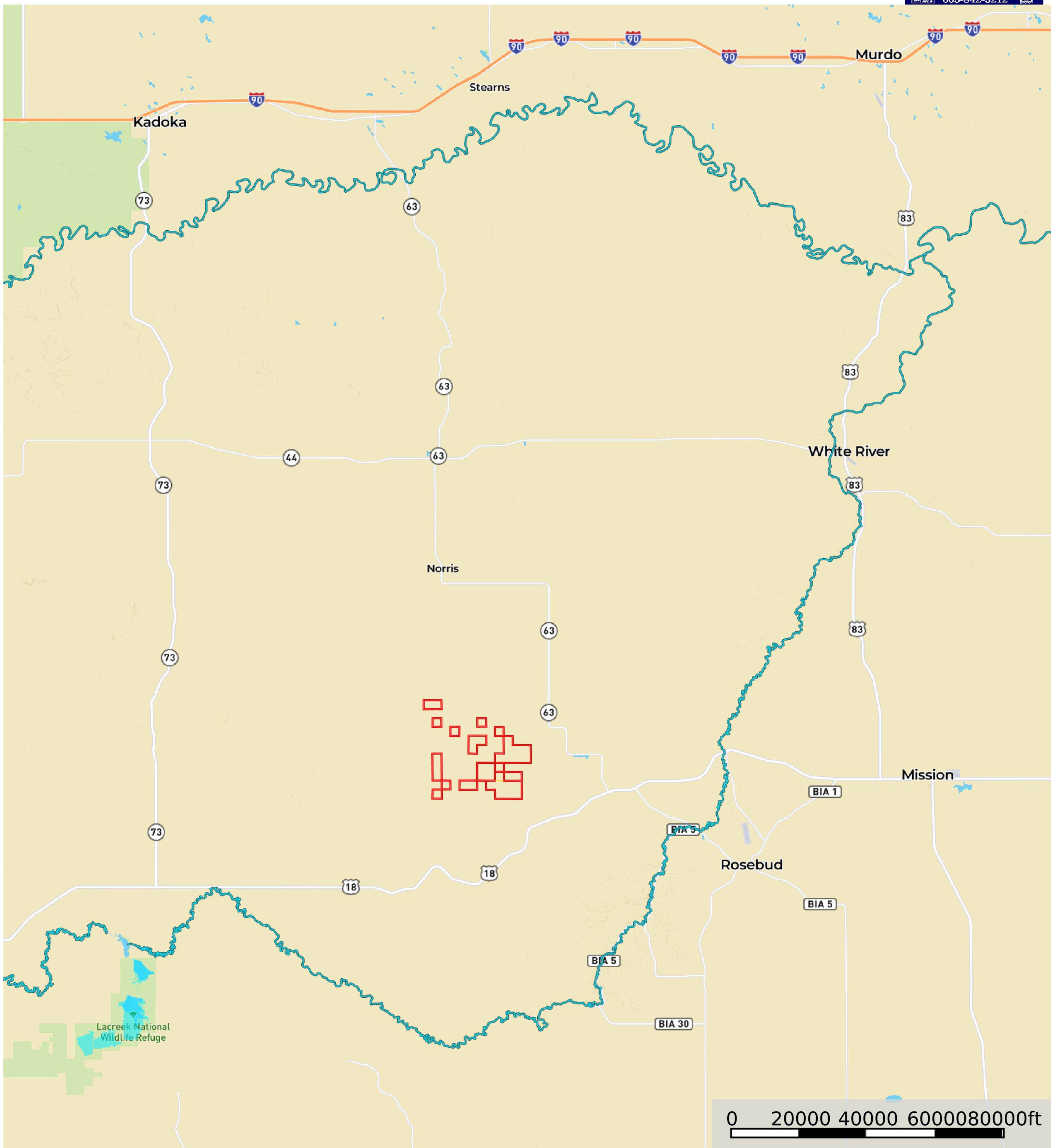
4.78 Cap.
Average



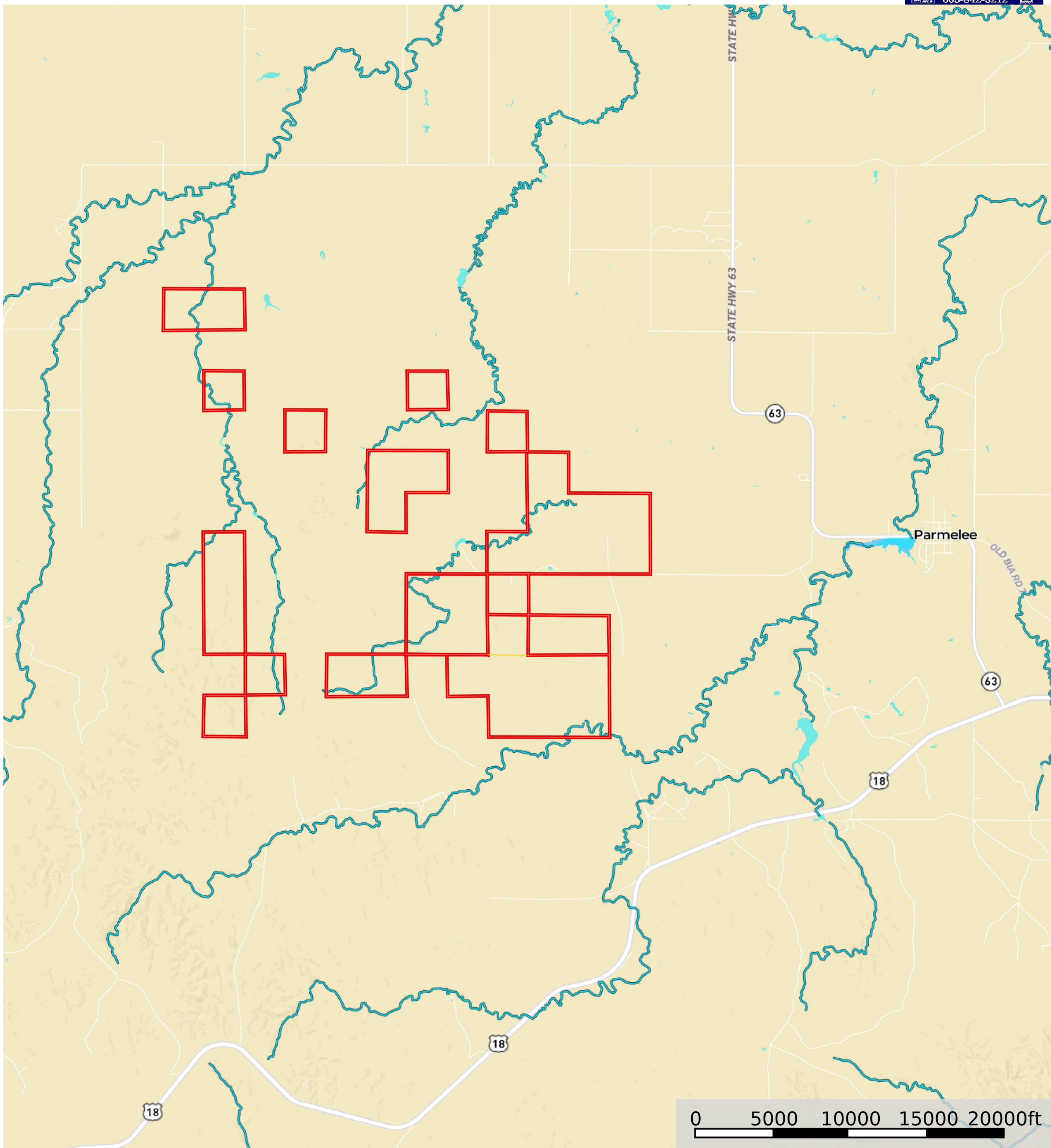


Martin Jones

Todd County, South Dakota, 6095 AC +/-



- Road / Trail
- Boundary
- Stream, Intermittent
- River/Creek
- Water Body



--- Road / Trail □ Boundary -.-.- Stream, Intermittent — River/Creek ■ Water Body