

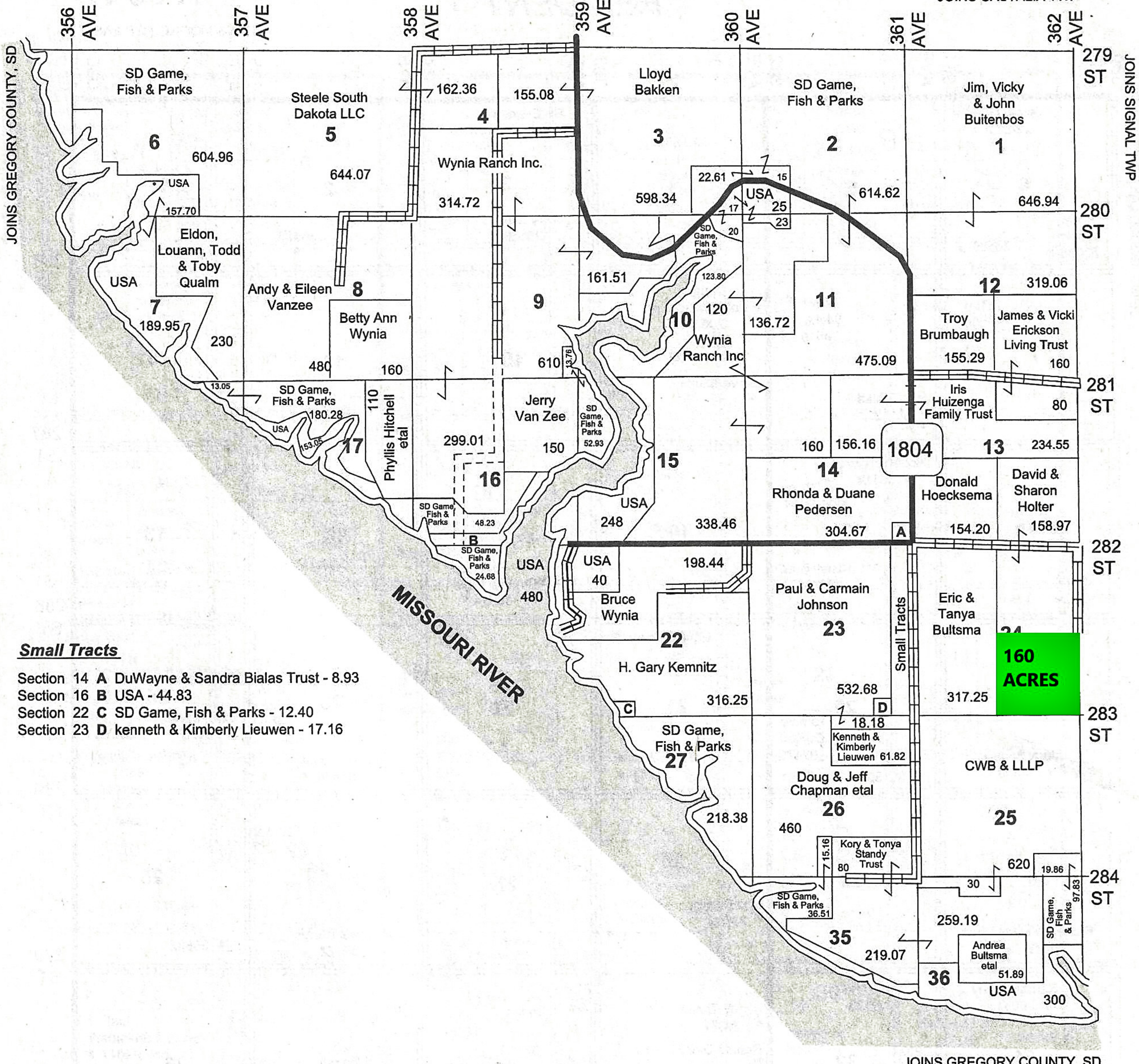
HAMILTON TWP

T 98 N

LAND OWNER

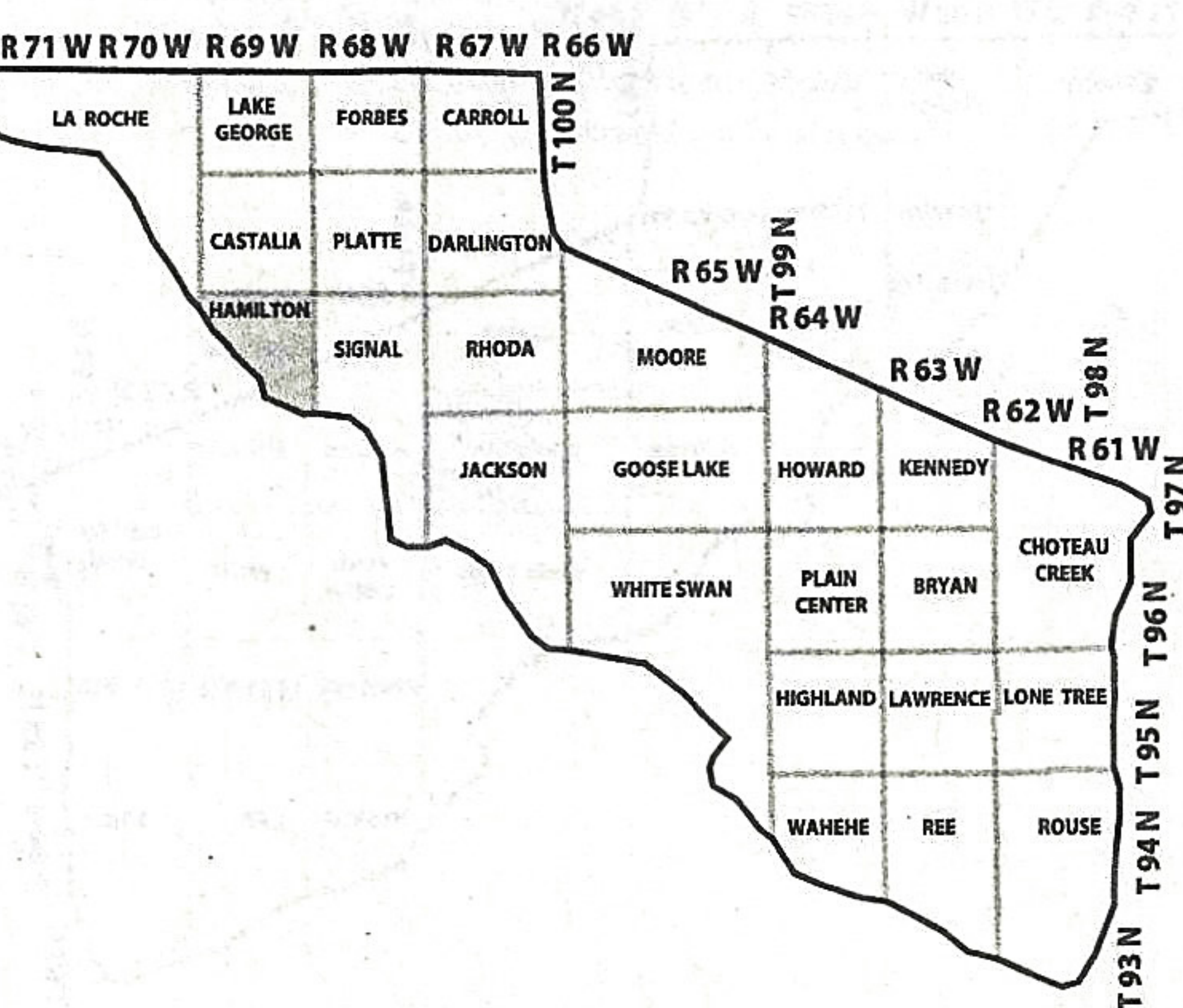
R 69 W

JOINS CASTALIA TWP



Small Tracts

- Section 14 **A** DuWayne & Sandra Bialas Trust - 8.93
- Section 16 **B** USA - 44.83
- Section 22 **C** SD Game, Fish & Parks - 12.40
- Section 23 **D** Kenneth & Kimberly Lieuwen - 17.16





-  Boundary
-  Stream, Intermittent
-  River/Creek
-  Water Body

Hamilton Twp, Gregory Co, South Dakota

Charles Mix County, South Dakota, 160 AC +/-

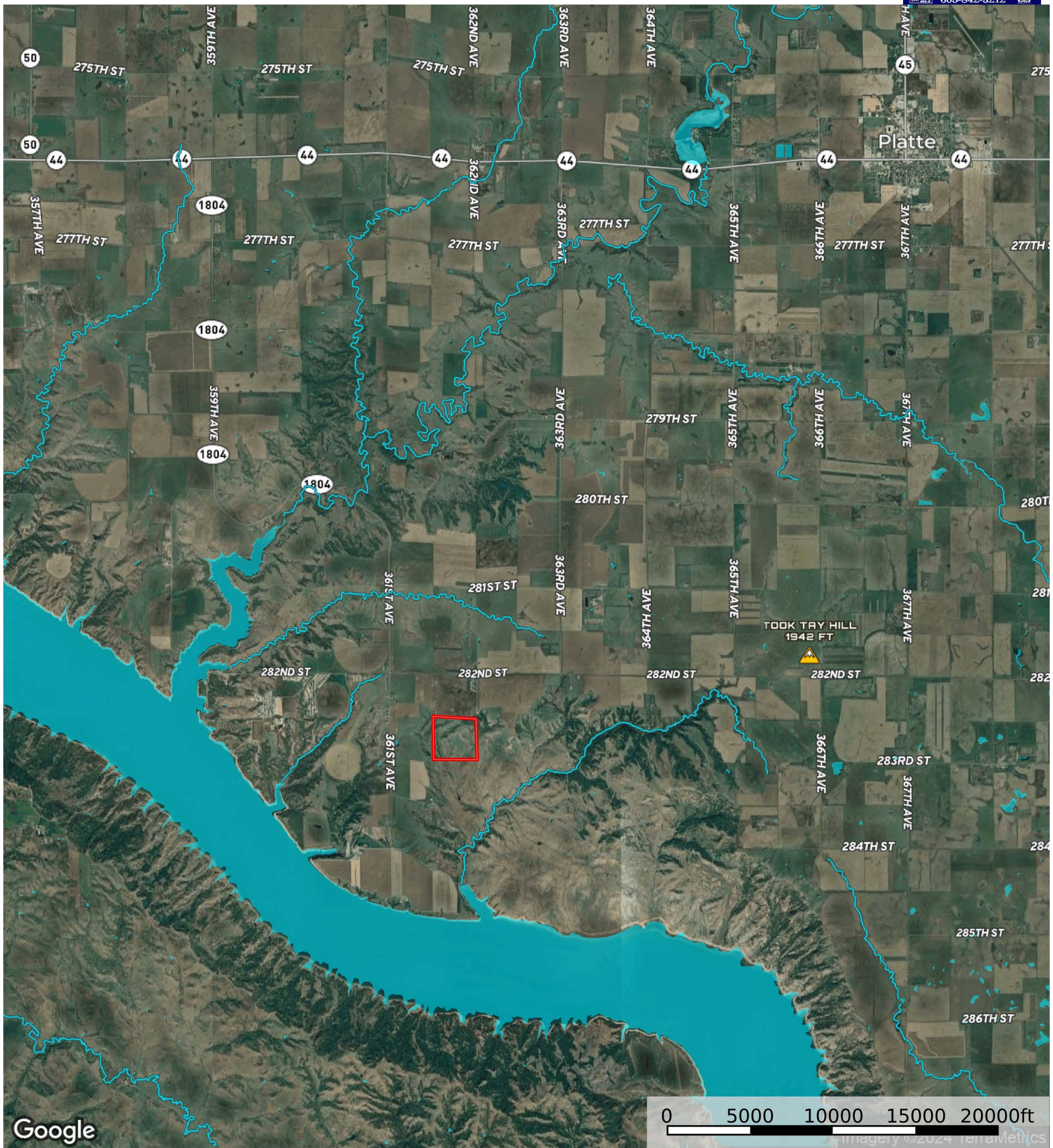
SHIPPY REALTY & AUCTION
Call: 605-842-3212




 Boundary  Stream, Intermittent  River/Creek  Water Body

Hamilton Twp, Gregory Co, South Dakota

Charles Mix County, South Dakota, 160 AC +/-



- Boundary
- Stream, Intermittent
- River/Creek
- Water Body

A satellite map of a rural area in South Dakota. A yellow line traces a route starting from the top right, heading west on Highway 44 (Lewis & Clark Trail), then south on Highway 1804, east on 282nd Street, and south on 262nd Avenue. A red box highlights a specific area in the lower-left quadrant of the map. The terrain is a patchwork of agricultural fields, with a large blue reservoir on the left side. A yellow mountain peak icon is labeled 'TOOK TRY HILL 1942 FT'. The word 'Platte' is visible in the top right corner.

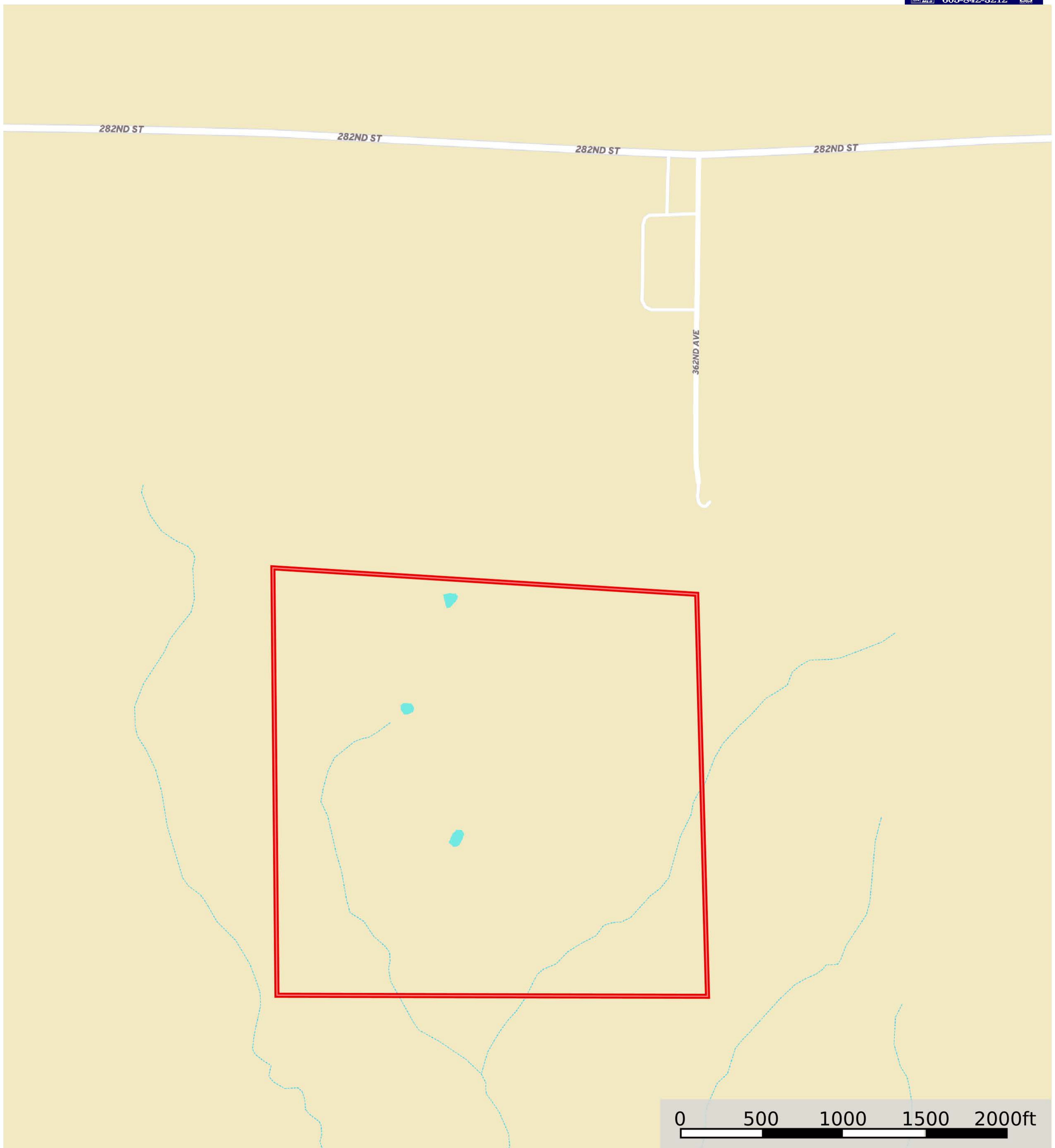
**GO WEST FROM PLATTE, SD ON HWY 44 (LEWIS & CLARK TRAIL) FOR 7.5 MILES
THEN TURN SOUTH ON HWY 1804 FOR 8 MILES
TURN EAST ON 282ND STREET FOR 1 MILE
TURN SOUTH ON 262ND AVENUE FOR 1/2 MILE**

TOOK TRY HILL
1942 FT



Hamilton Twp, Gregory Co, South Dakota

Charles Mix County, South Dakota, 160 AC +/-



Soil Report

Acres

Capabilities

WAPI

Boundary: 153.49 ac

Code	Description	Acres	%	CPI	NCCPI	CAP	?
OeF	Okaton silty clay, 15 to 40 percent slopes	77.81	50.69%	9	4	7e	?
BdF	Betts-Ethan loams, 15 to 40 percent slopes	41.86	27.27%	19	12	7e	?
HhB	Highmore silt loam, 2 to 6 percent slopes	30.27	19.72%	91	58	2e	?
SoF	Sansarc-Boyd complex, 6 to 35 percent slopes	3.55	2.31%	11	20	7e	?
Totals		153.49 ac		27.94 CPI Average	17.2 NCCPI Average	6.01 Cap. Average	

