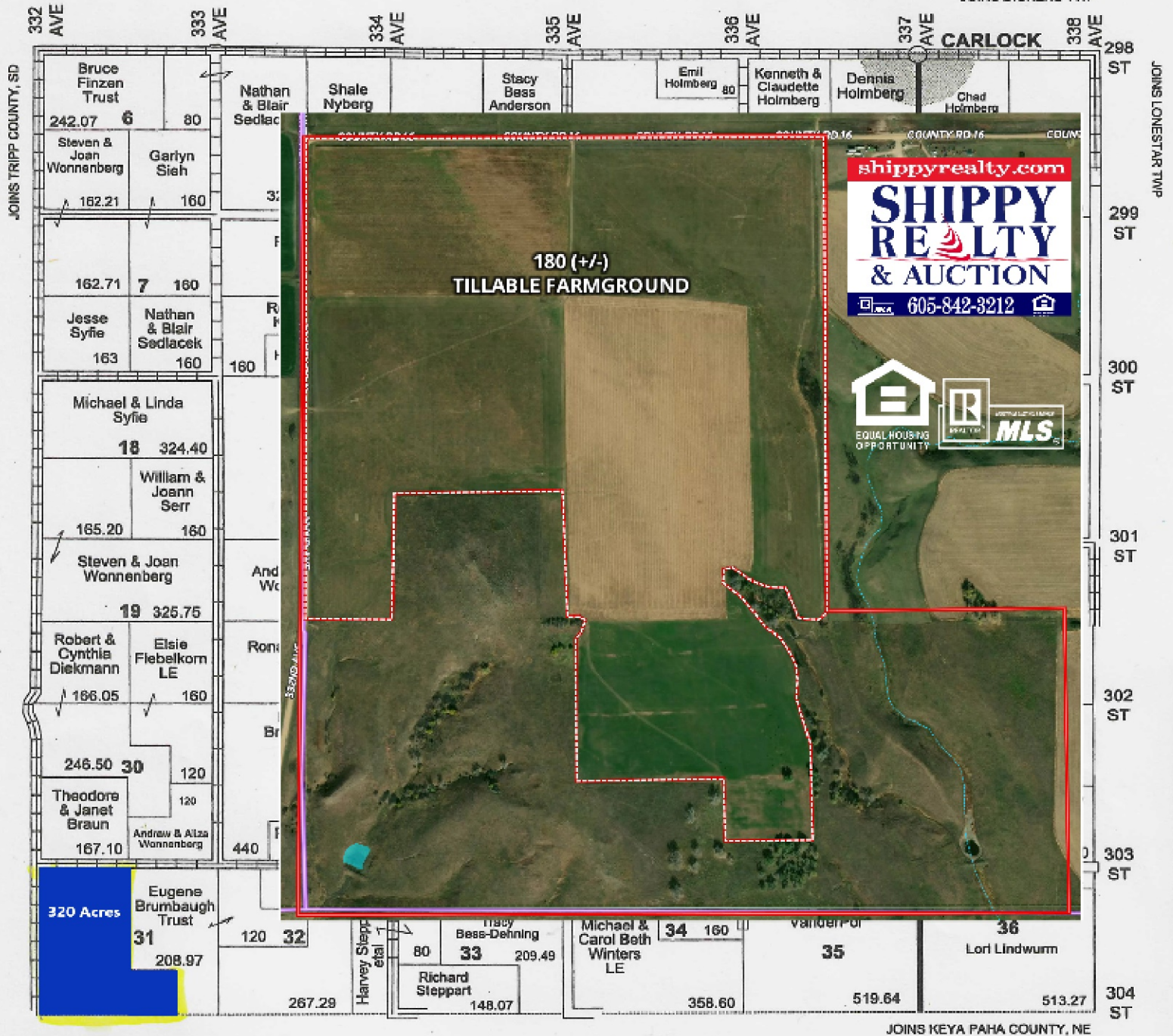


CARLOCK TWP

T 95 N

R 73 W

JOINS DICKENS TWP



shippyrealty.com
SHIPPY REALTY & AUCTION
 605-842-3212

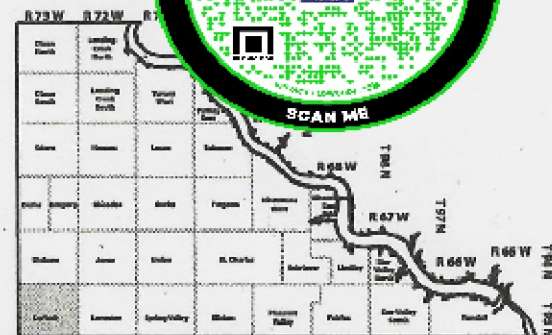
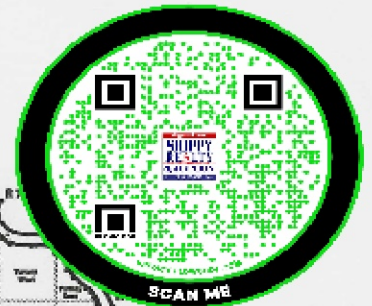
EQUAL HOUSING OPPORTUNITY
 REALTOR
 MLS

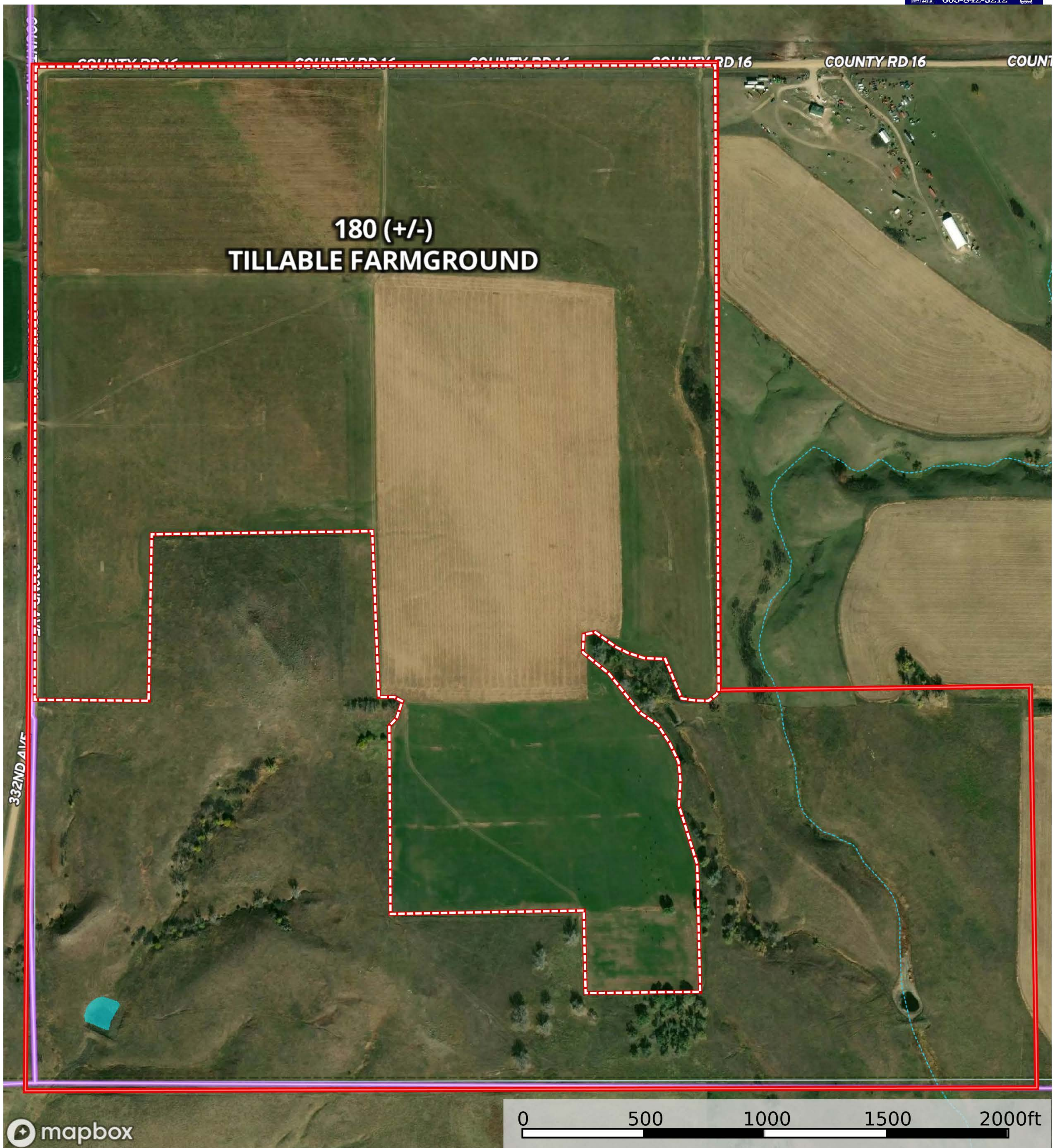
Small Tracts

Section 38 A David Kaupp et al - 7.41

FOR SALE: 2600/acre (Improved Price)

320 (+/-) acres in Carlock Township, Gregory County, South Dakota of crop/grazing land (180 acres tillable). Present use is small grain, sorghum, hay ground, and pasture with a dugout. Excellent pheasant hunting. The soil productivity average is 52.3 on crop/hay ground. There is a Tripp County Rural Water on the property.





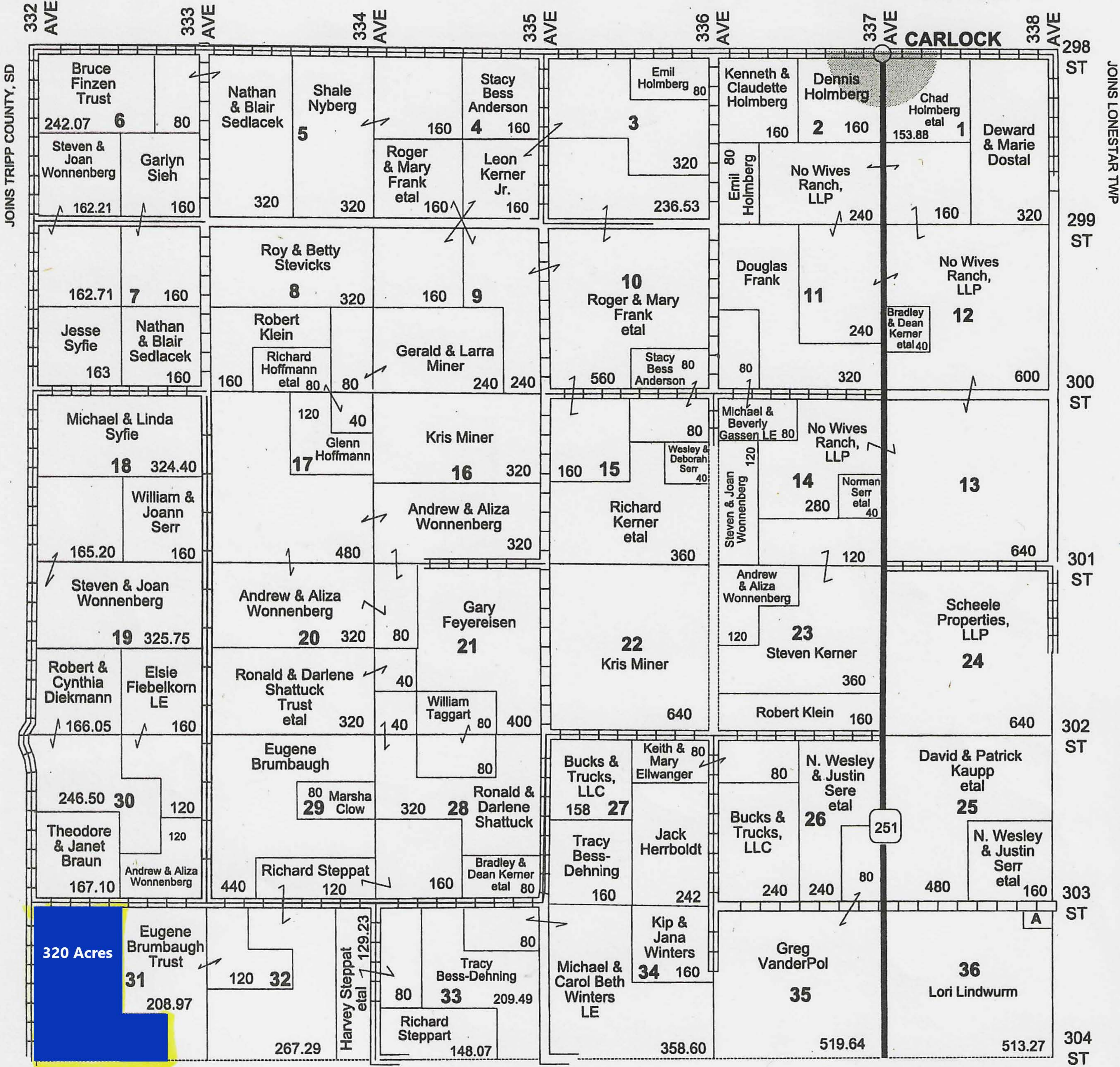
- Boundary
- Boundary
- Stream, Intermittent
- River/Creek
- Water Body
- Townships

CARLOCK TWP

T 95 N

R 73 W

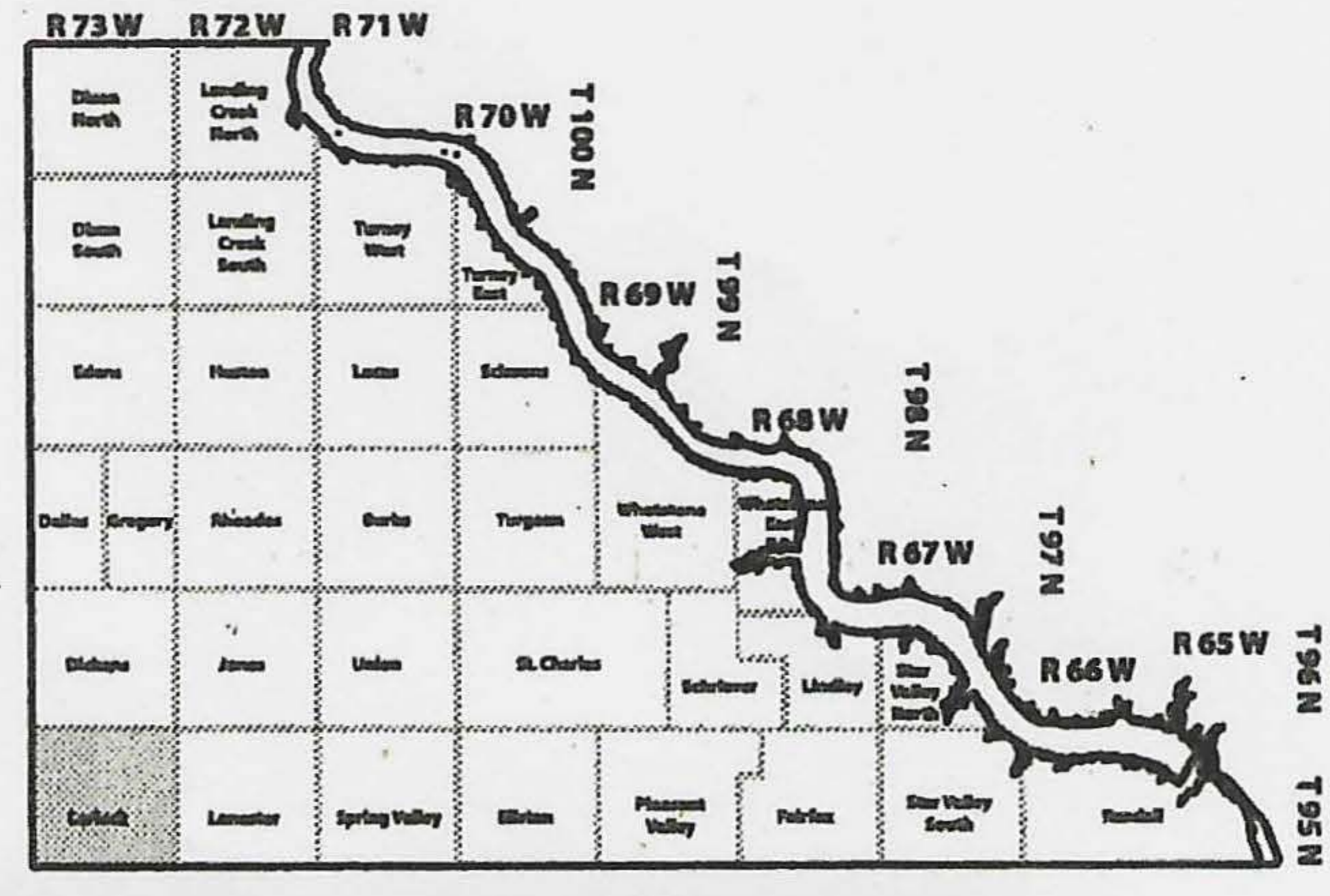
JOINS DICKENS TWP



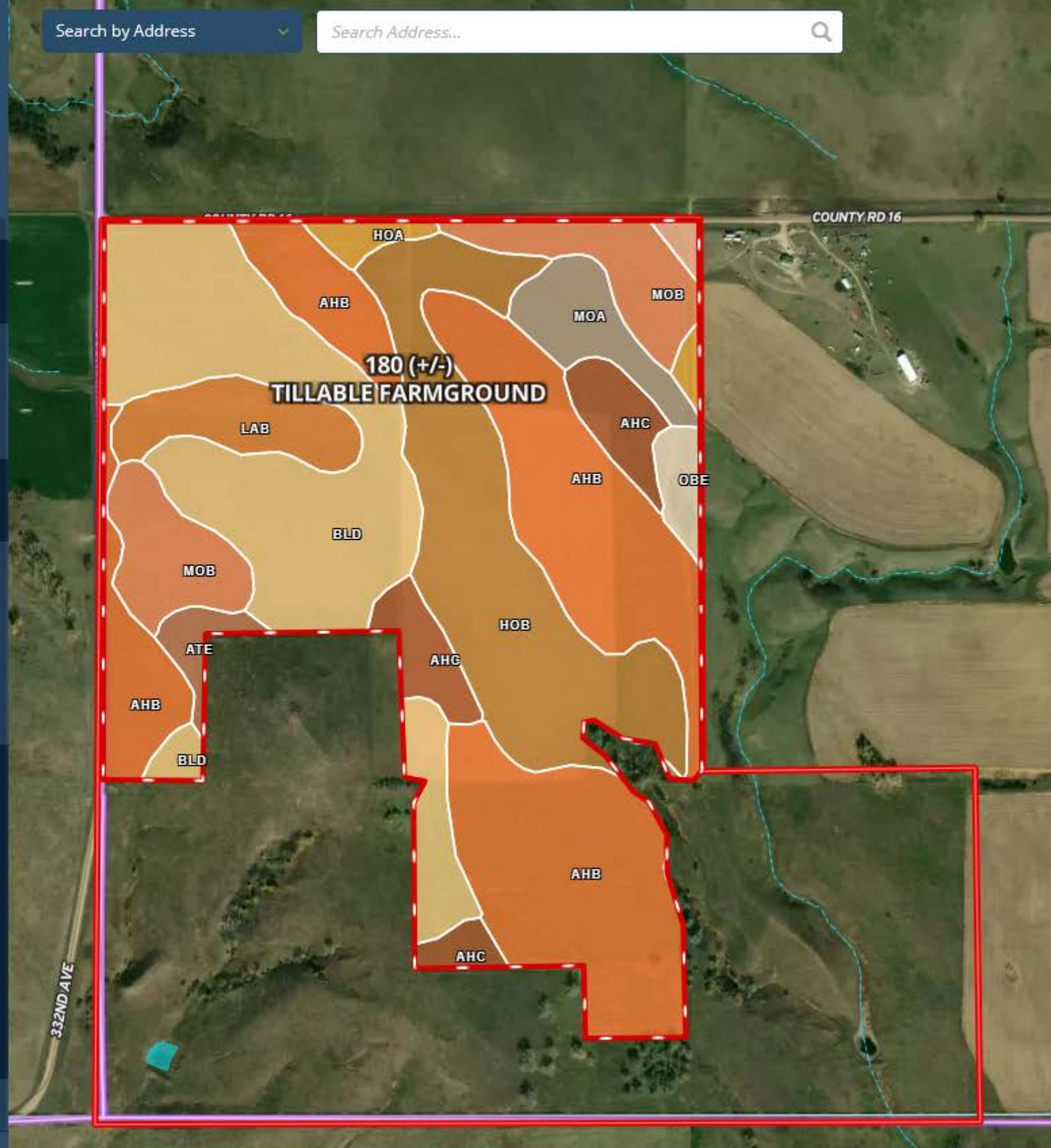
JOINS KEYA PAHA COUNTY, NE

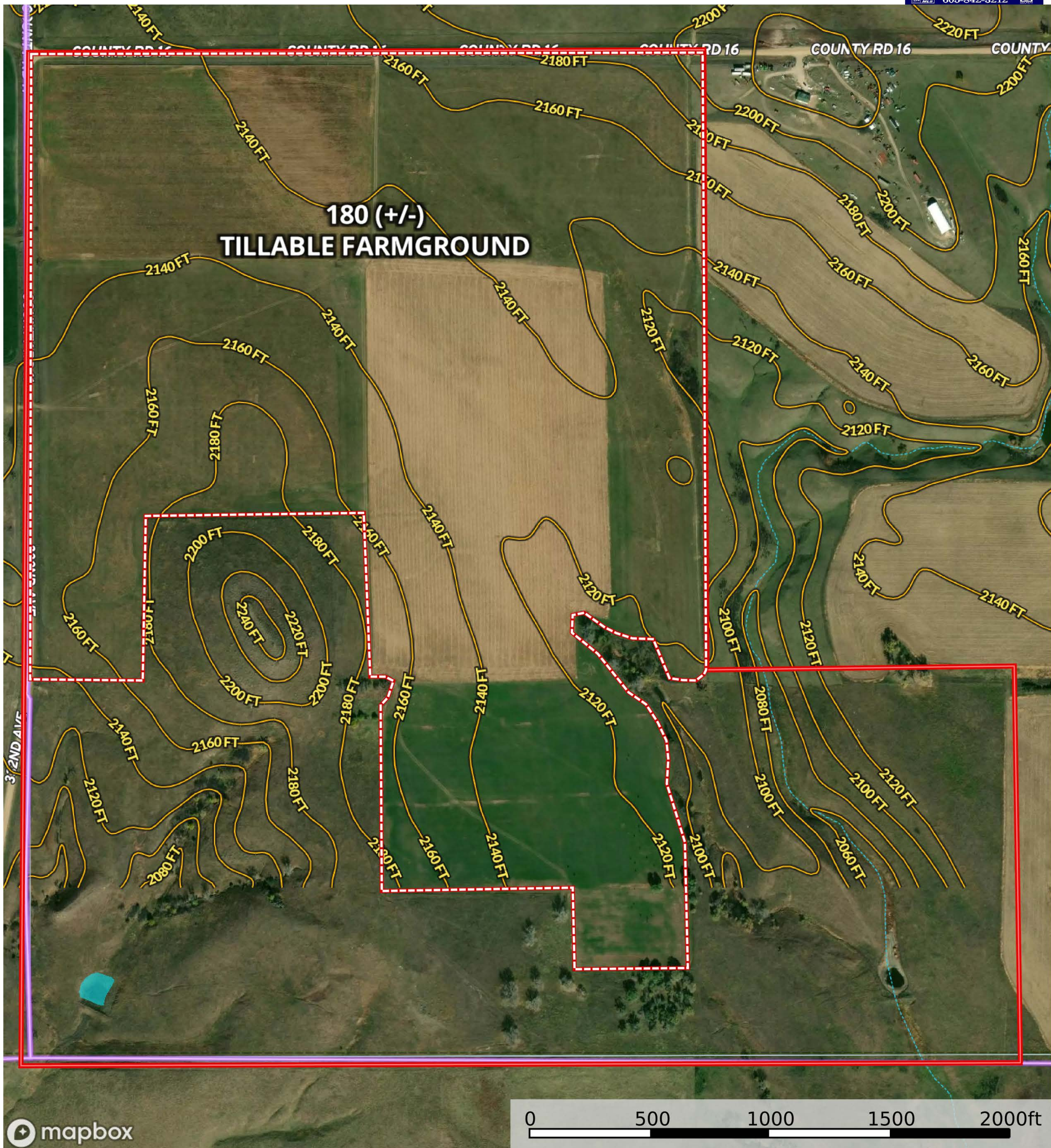
Small Tracts

Section 36 A David Kaupp et al - 7.41

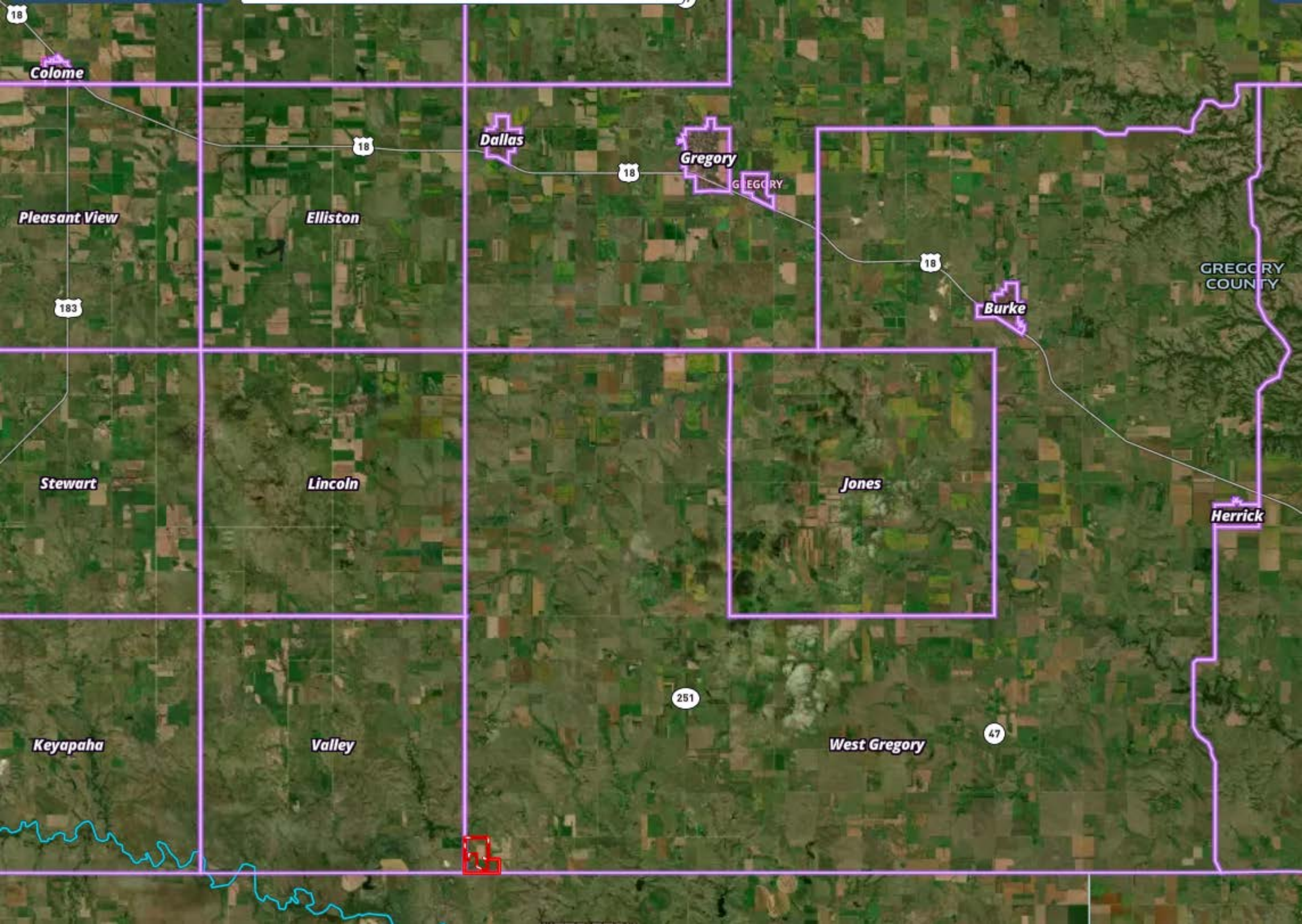


CODE	DESCRIPTION	ACRES		CAPABILITIES		WAPI	
		ACRES	%	LPI	NCCPI	CAP	🔍
AhB	Anselmo-Holt fine sandy loams, 2 to 6 percent slopes	60.04	33.28%	53	38	3e	🔍
BID	Boro-Lakoma silty clays, 9 to 15 percent slopes	41.65	23.08%	39	28	6e	🔍
HoB	Holt fine sandy loam, 3 to 6 percent slopes	32.24	17.87%	54	32	3e	🔍
MoB	Millboro silty clay, 3 to 6 percent slopes	14.81	8.21%	80	28	3e	🔍
AhC	Anselmo-Holt fine sandy loams, 6 to 9 percent slopes	9.49	5.26%	43	36	4e	🔍
LaB	Labu clay, 2 to 6 percent slopes	7.76	4.3%	65	24	3e	🔍
MoA	Millboro silty clay, 0 to 3 percent slopes	6.25	3.46%	86	33	2s	🔍
HoA	Holt fine sandy loam, 0 to 3 percent slopes	2.56	1.42%	59	22	3e	🔍
ObF	Okaton-Lakoma silty clays, 15 to 40 percent slopes	2.41	1.34%	14	9	7e	🔍
AtE	Anselmo-Tassel fine sandy loams, 6 to 25 percent slopes	2.3	1.27%	14	28	6e	🔍
LwC	Lakoma-Wewela complex, 6 to 9 percent slopes	0.8	0.44%	42	26	4e	🔍
LcF	Labu-Sansarc silty clays, 9 to 35 percent slopes	0.13	0.07%	33	20	6e	🔍
Totals		52.3	CPI	32.11	NCCPI	3.81	Cap.
180.43 ac 🔍		Average		Average		Average	





- Boundary
- Boundary
- Stream, Intermittent
- River/Creek
- Water Body
- Townships



Colome

Pleasant View

Stewart

Keyapaha

Elliston

Lincoln

Valley

Dallas

Gregory

Jones

West Gregory

Burke

Herrick

GREGORY COUNTY

18

18

183

18

18

251

47

