

# IDEAL TWP

T 101 N

R 76 W

JOINS STAR VALLEY TWP

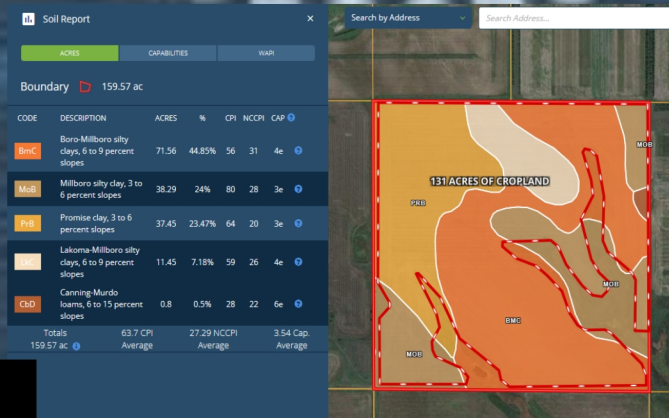
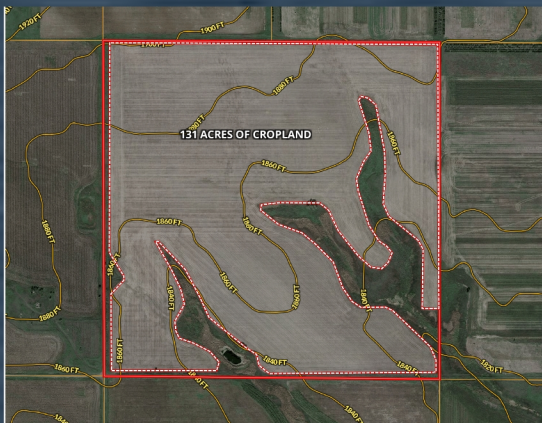


160 (+/-) acres in Ideal Township, Tripp County, South Dakota of cropland. Excellent pheasant hunting. There are around 131 plus tillable acres. The soil productivity average is 63.7.

From Ideal, SD it is 3 miles northeast, from Winner, SD it is 12 miles north.

LEGAL: SW1/4 of 12-101-76 (160 acres)

FOR SALE: \$3400/acre



shippyrealty.com

**SHIPPY  
RE  
LT  
& AUCTION**



605-842-3212



Scan to Web Page



SCAN ME



MULTIPLE LISTING SERVICE

**MLS**

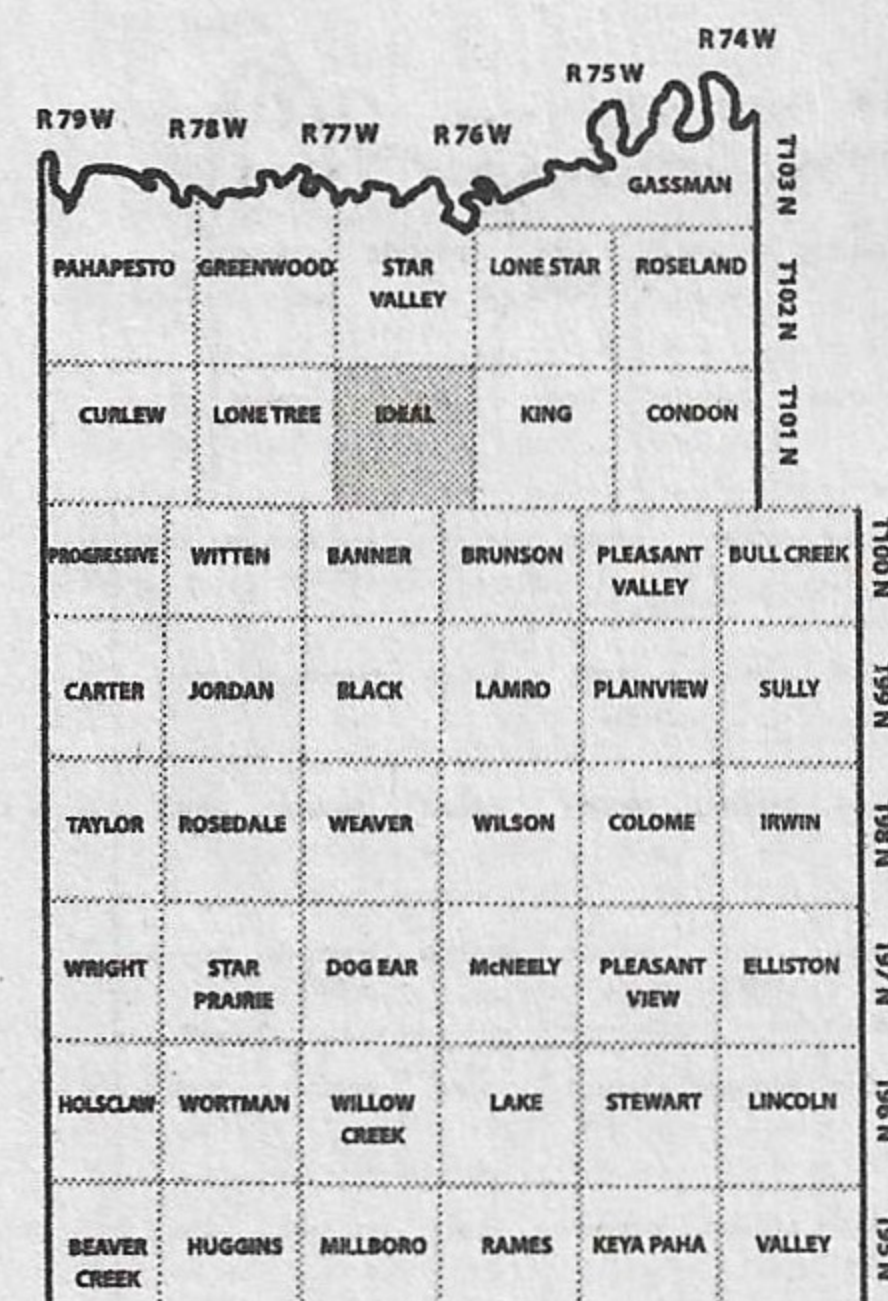
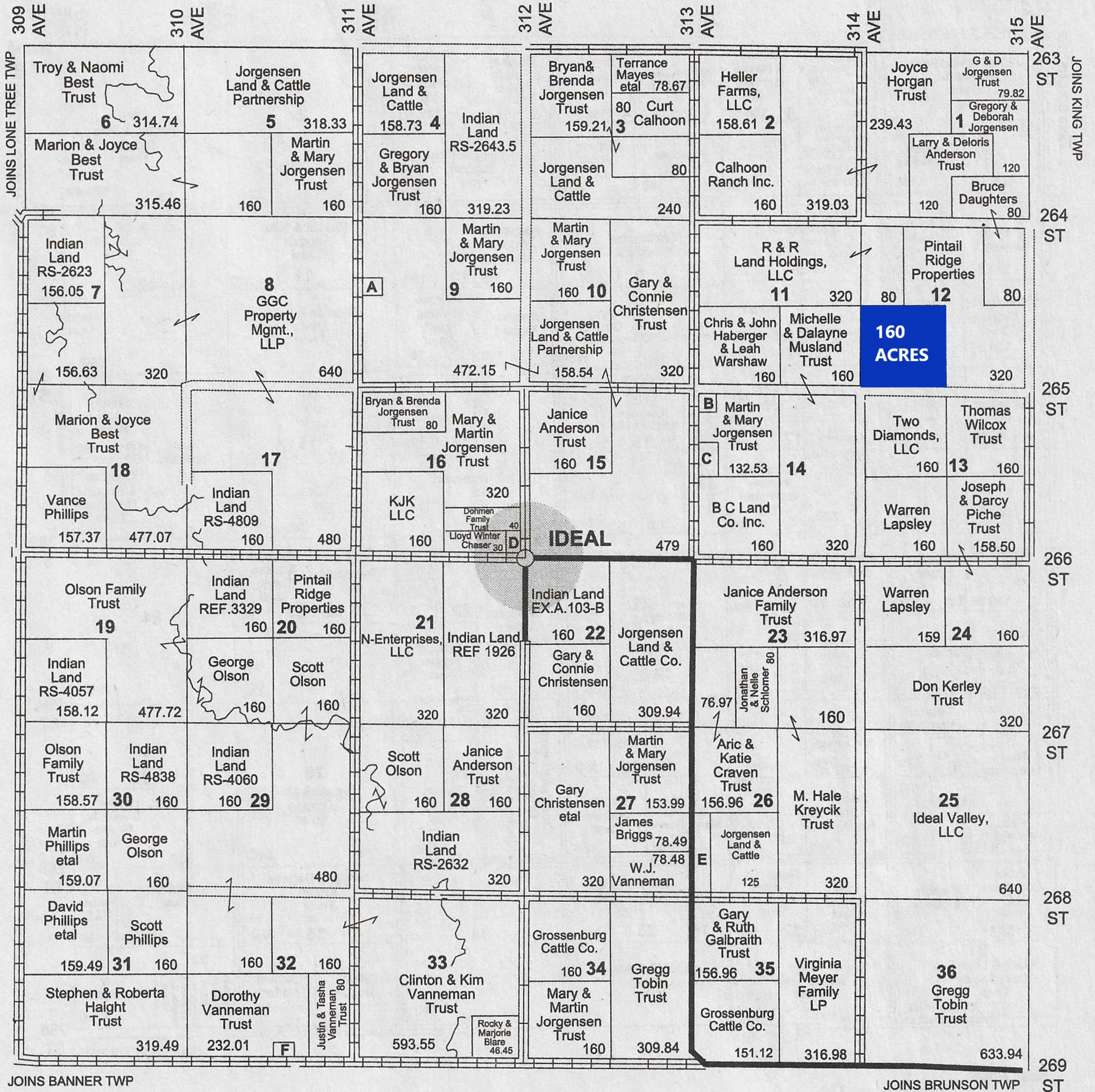


# IDEAL TWP

T 101 N

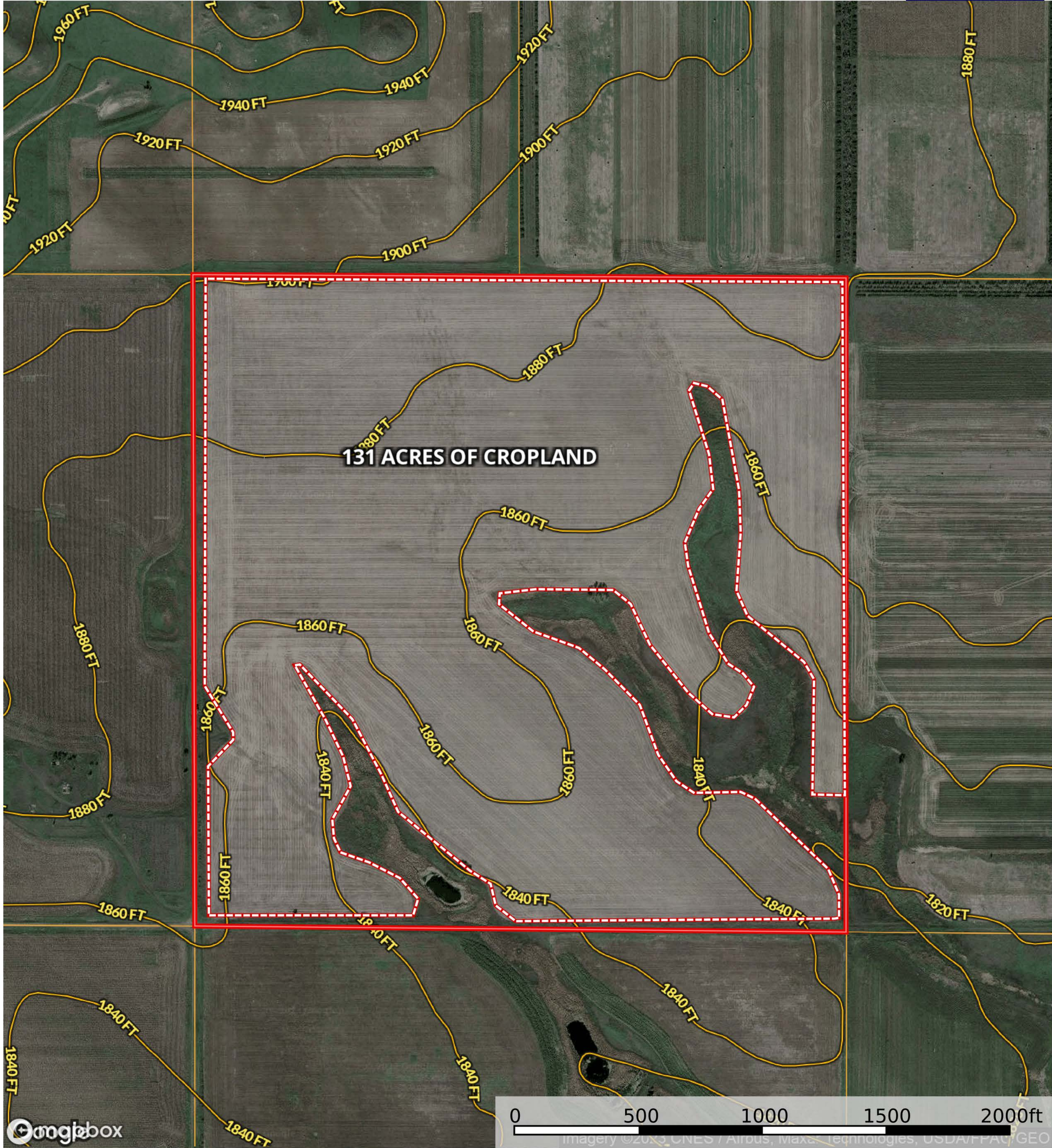
R 76 W

JOINS STAR VALLEY TWP





160 Acres in Ideal Twp, Tripp Co. SD  
Tripp County, South Dakota, 160 AC +/-



Boundary Boundary





# Soil Report



Search by Address








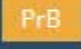



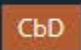


Search Address...

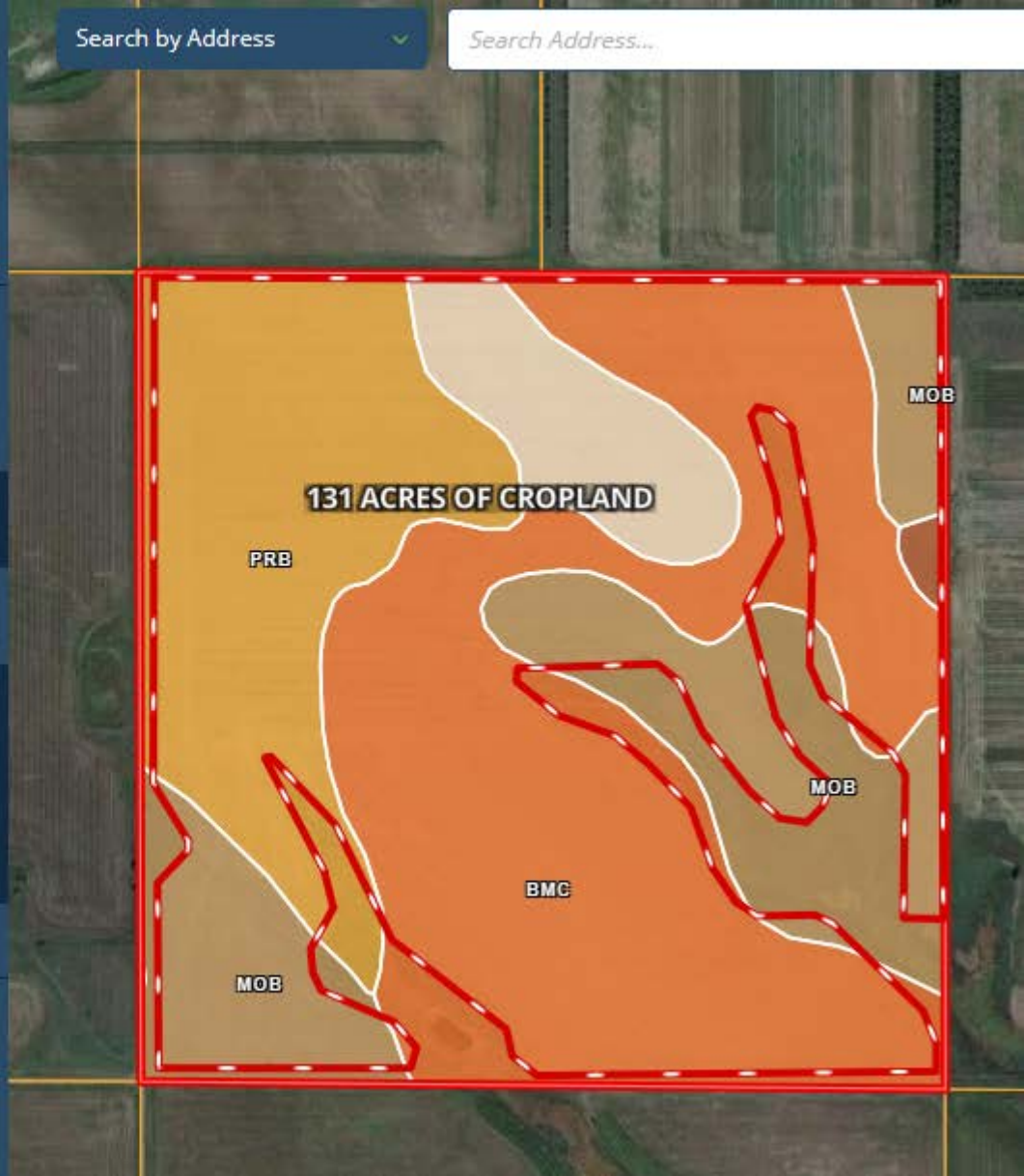
ACRES

CAPABILITIES

WAPI

Boundary  159.57 ac

CODE	DESCRIPTION	ACRES	%	CPI	NCCPI	CAP 
 BmC	Boro-Millboro silty clays, 6 to 9 percent slopes	71.56	44.85%	56	31	4e 
 MoB	Millboro silty clay, 3 to 6 percent slopes	38.29	24%	80	28	3e 
 PrB	Promise clay, 3 to 6 percent slopes	37.45	23.47%	64	20	3e 
 LkC	Lakoma-Millboro silty clays, 6 to 9 percent slopes	11.45	7.18%	59	26	4e 
 CbD	Canning-Murdo loams, 6 to 15 percent slopes	0.8	0.5%	28	22	6e 
Totals		63.7 CPI	27.29 NCCPI	3.54 Cap.		
159.57 ac 		Average	Average	Average		





**shippyrealty.com**  
**SHIPPY**  
**REALTY**  
**& AUCTION**  
605-842-3212

This is an aerial map of the Winner, North Dakota area. A red dashed rectangle highlights a proposed airport site located north of the town of Winner. The map shows a grid of streets including 264th St, 265th St, 267th St, 268th St, 270th St, 272nd St, 273rd St, 275th St, 277th St, and 278th St. Major roads like County Rd 6140 and Highway 6139 N are also visible. The town of Winner is shown at the bottom, with a scale bar indicating distances up to 20,000 feet. The Google logo is in the bottom left corner.

