

KING TWP

T 101 N

R 75 W

JOHN LONE STAR TWP



80 (+/-) acres in King Township, Tripp County, South Dakota of grazing land.

From Ideal, SD it is 4.5 miles northeast, from Winner, SD it is 12 miles north.

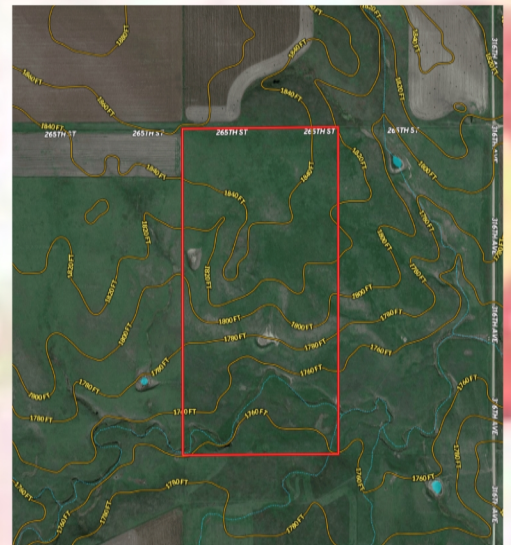
LEGAL: W1/2NE1/4 of 18-101-75 (King Township, Tripp County)

Price: \$1900/acre



**Scan to Webpage
Shippy Realty**

SCAN ME



shippyrealty.com

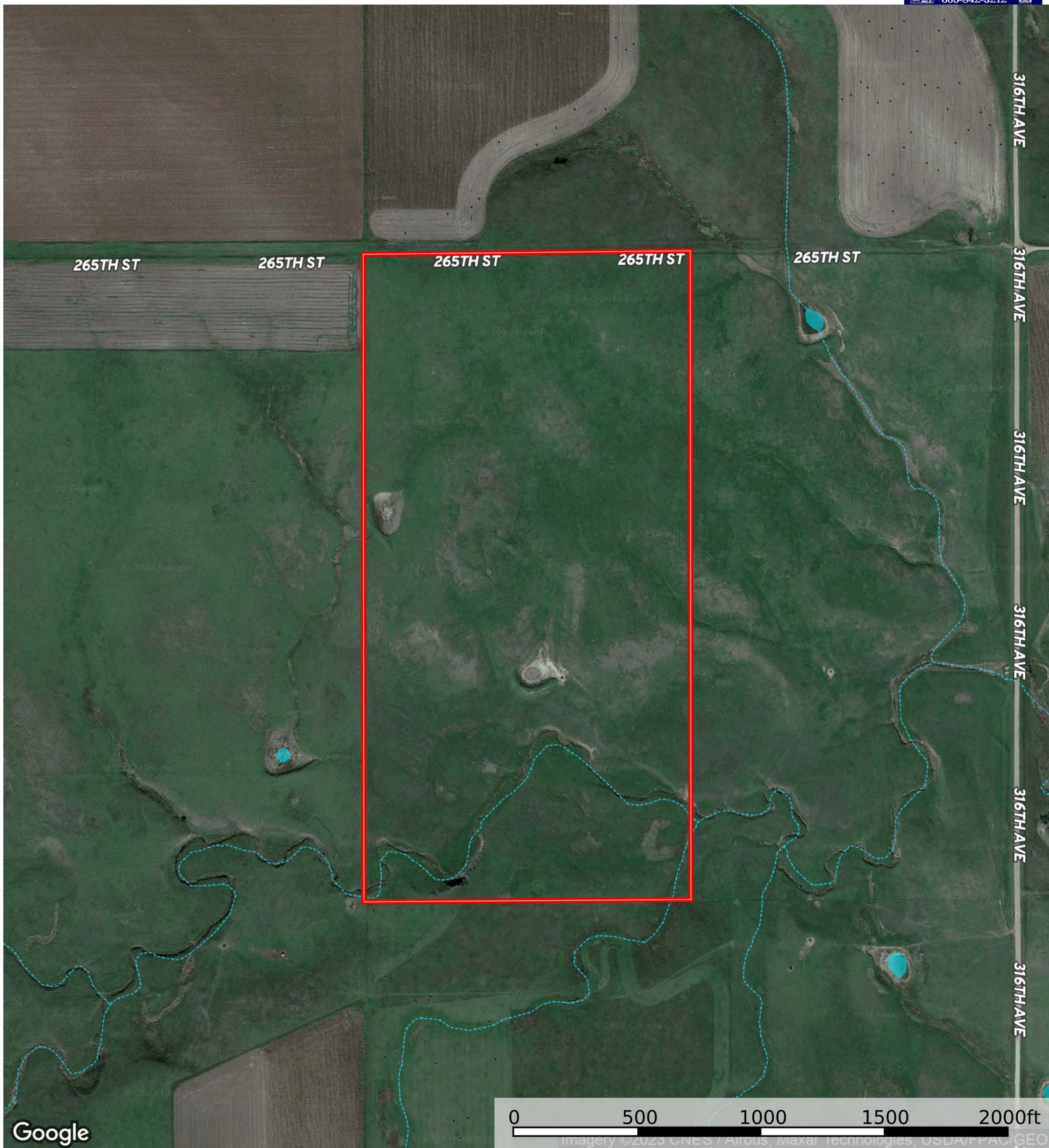
**SHIPPY
REALTY
& AUCTION**

605-842-3212

MULTIPLE LISTING SERVICE
MLS

80 Acres (W1/2NE1/4 of 18-101-75)

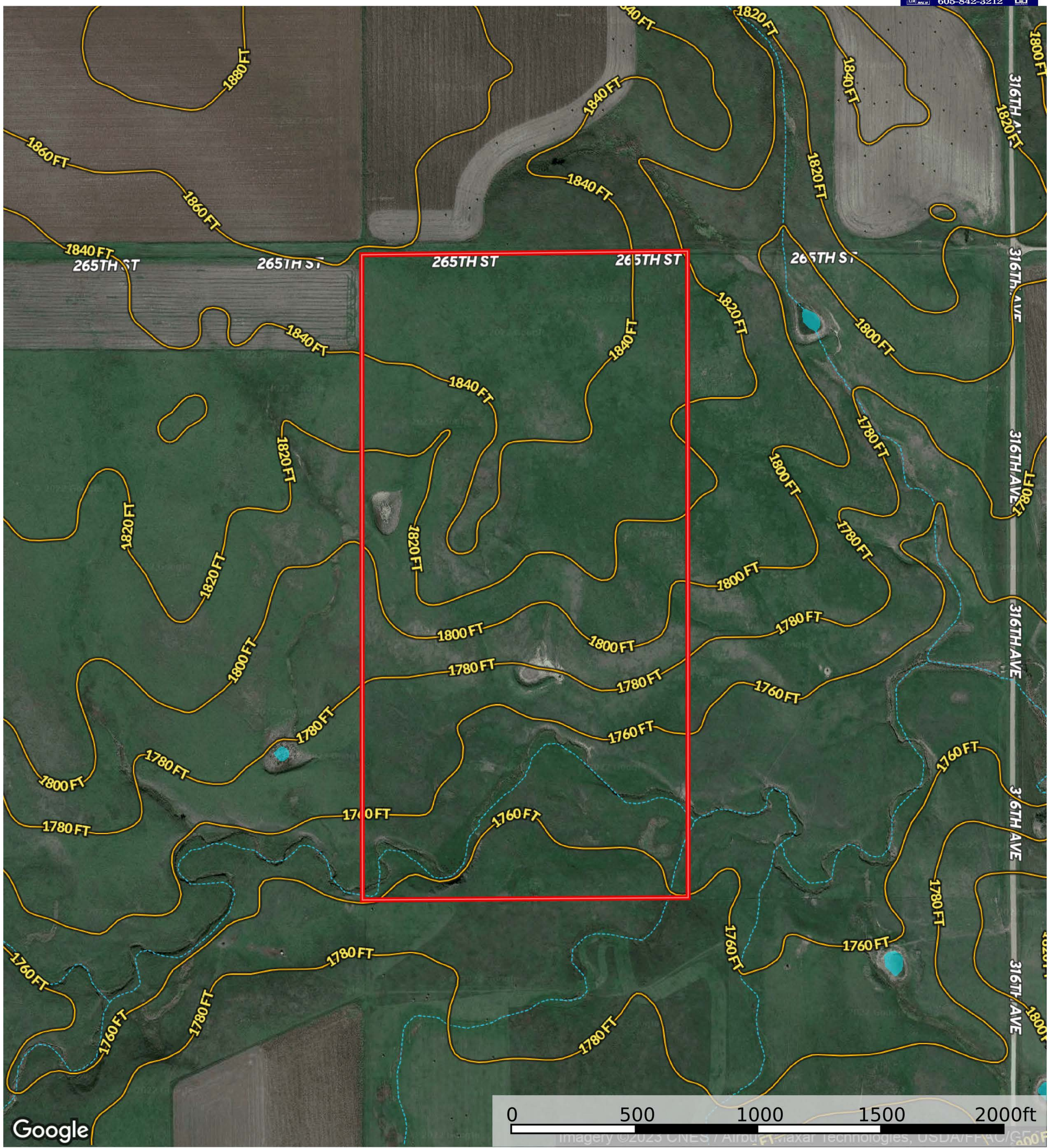
Tripp County, South Dakota, 80 AC +/-



- Boundary
- Stream, Intermittent
- River/Creek
- Water Body

80 Acres (W1/2NE1/4 of 18-101-75)

Tripp County, South Dakota, 80 AC +/-

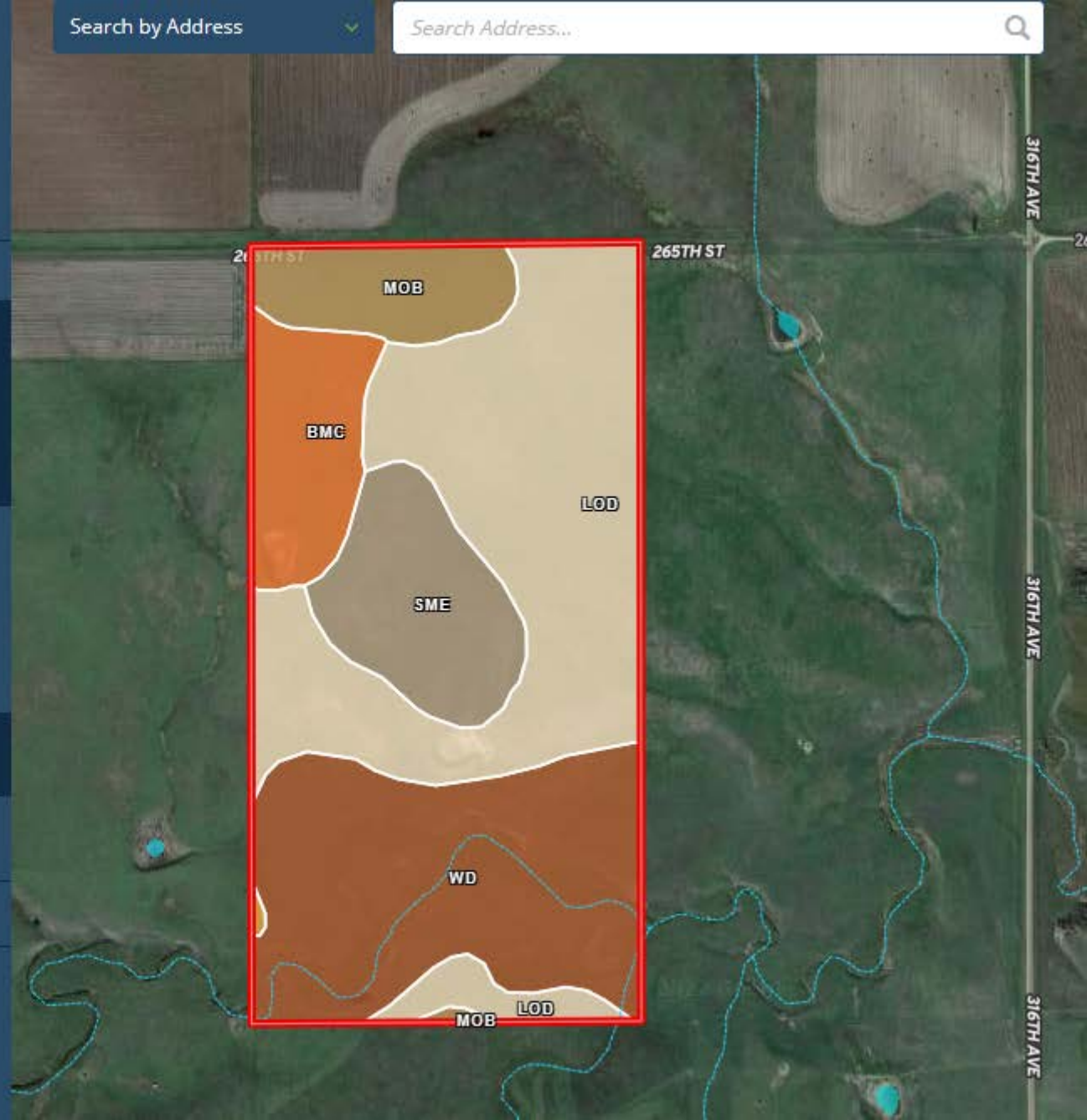


- Boundary
- Stream, Intermittent
- River/Creek
- Water Body
- Townships

ACRES | CAPABILITIES | WAPI

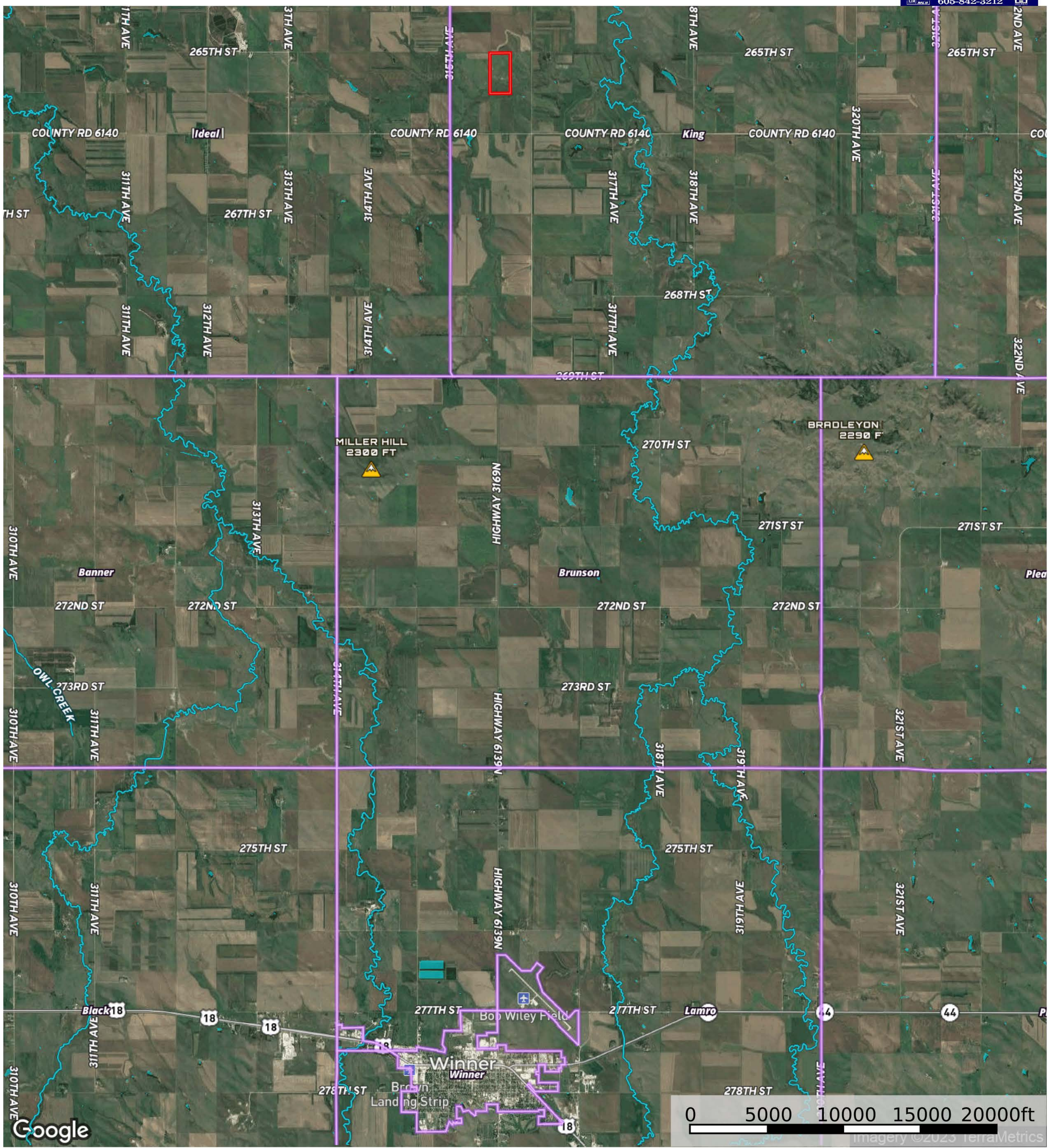
Boundary ▭ 79.79 ac

CODE	DESCRIPTION	ACRES	%	CPI	NCCPI	CAP ?
LoD	Lakoma-Okaton silty clays, 6 to 15 percent slopes	32.93	41.27%	34	20	4e ?
Wd	Wendte clay, channeled, occasionally flooded	23.71	29.72%	35	21	6w ?
SmE	Schamber-Murdo complex, 15 to 40 percent slopes	9.42	11.81%	7	7	7e ?
BmC	Boro-Millboro silty clays, 6 to 9 percent slopes	7.39	9.26%	56	31	4e ?
MoB	Millboro silty clay, 3 to 6 percent slopes	6.19	7.76%	80	28	3e ?
OsE	Opal-Sansarc clays, 6 to 15% slopes	0.14	0.18%	38	17	6e ?
Totals		36.72	CPI	20.39	NCCPI	4.87 Cap.
79.79 ac ?		Average		Average		Average



80 Acres (W1/2NE1/4 of 18-101-75)

Tripp County, South Dakota, 80 AC +/-



- Boundary
- Stream, Intermittent
- River/Creek
- Water Body
- Townships