

160 +/- Acres in Lake Twp. Tripp Co. SD (NEW LISTING)

FOR SALE: 2300/acre

160 (+/-) acres of mostly cropland on level ground. The soil productivity average is 50.71.

From Colome SD, 12 miles south on Hwy 183 then 2.5 miles west on 297 Street.

shippyrealty.com

**SHIPPY
REALTY
& AUCTION**



605-842-3212



EQUAL HOUSING
OPPORTUNITY



MULTIPLE LISTING SERVICE

MLS

160 acres in Lake Twp, Tripp Co. SD

Tripp County, South Dakota, 160 AC +/-

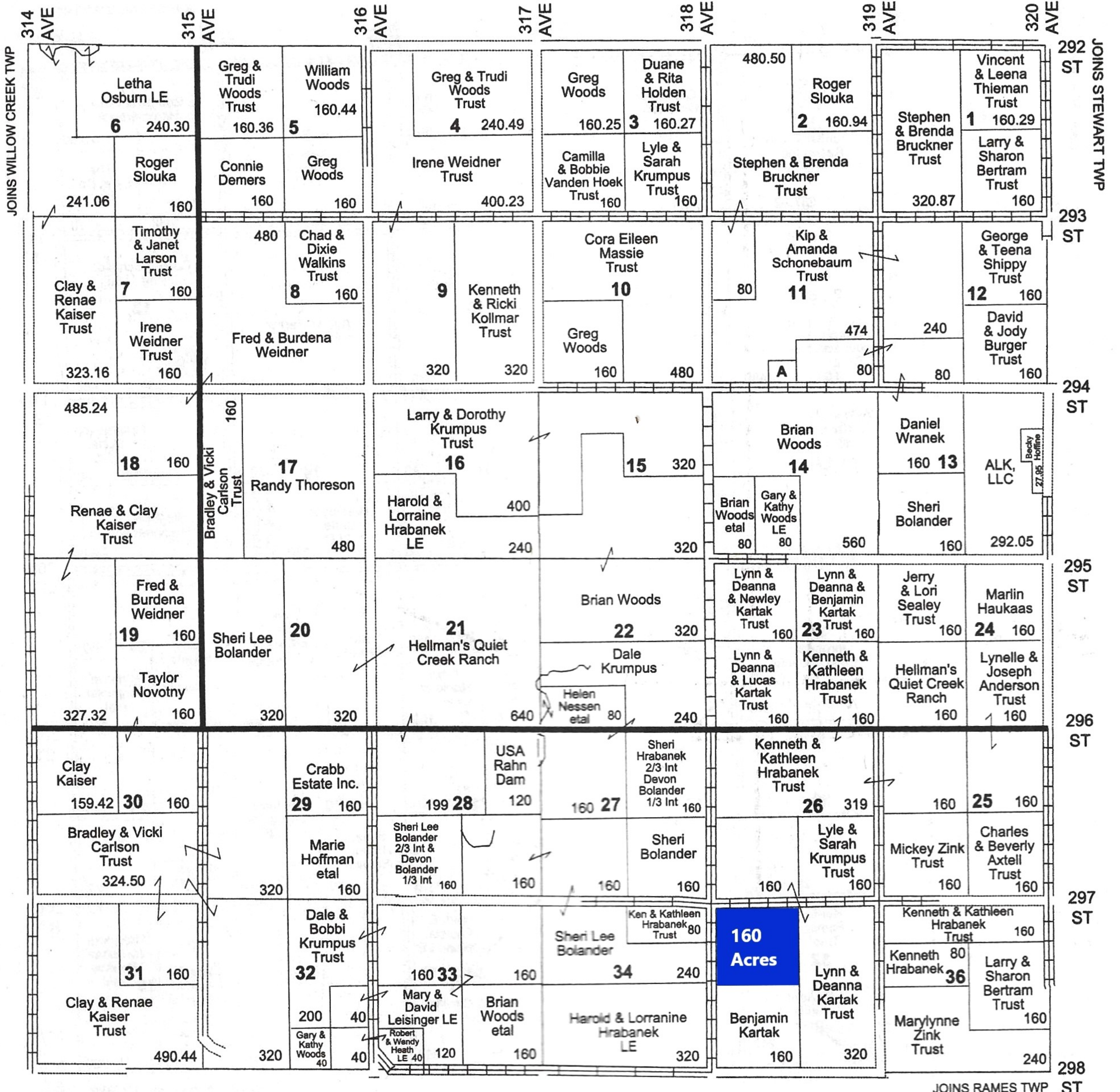


- Boundary
- Stream, Intermittent
- River/Creek
- Water Body

LAKE TWP

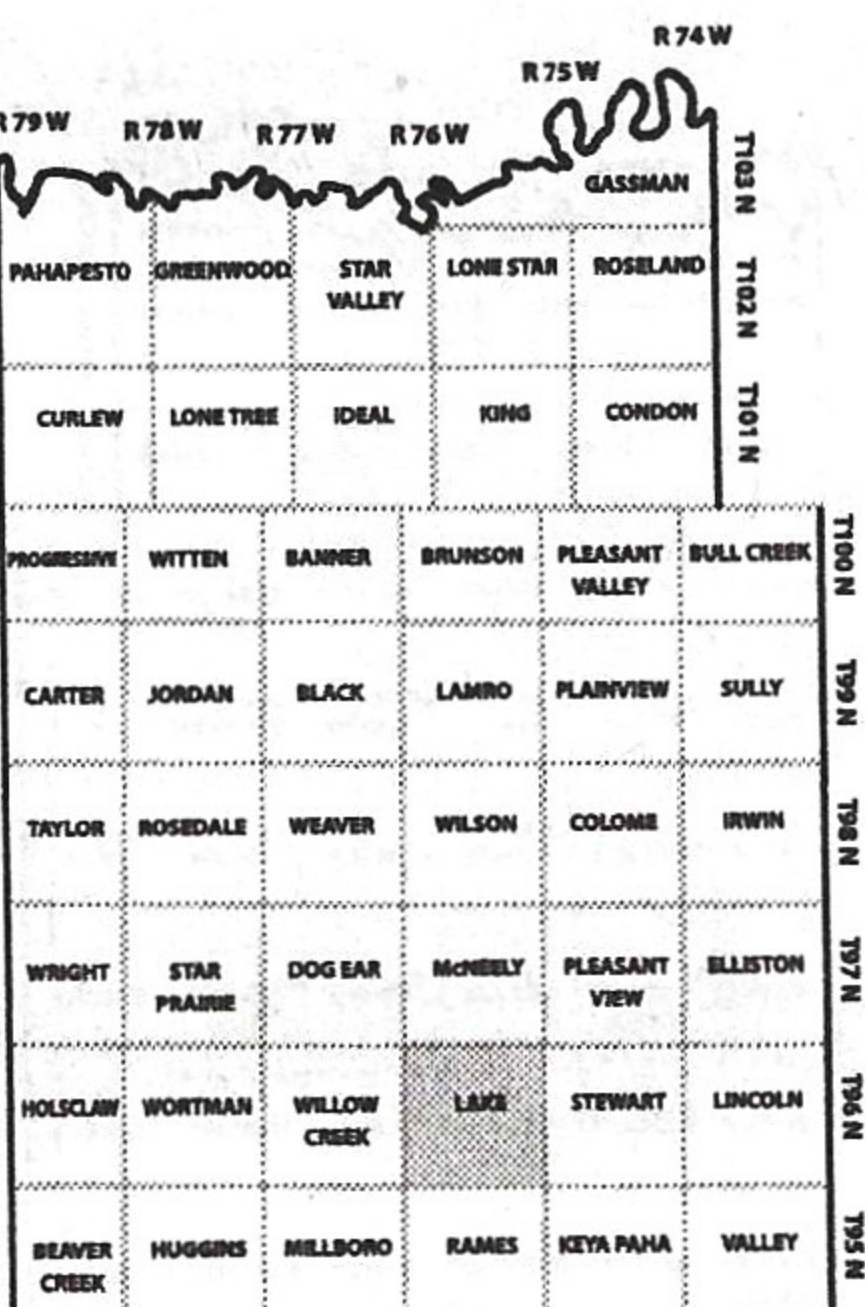
T 96 N

R 76 W
JOINS McNEELY TWP



Small Tracts

Section 11 A Amanda Schonebaum - 5



160 acres in Lake Twp, Tripp Co. SD

Tripp County, South Dakota, 160 AC +/-



 Boundary  Stream, Intermittent  River/Creek  Water Body

160 acres in Lake Twp, Tripp Co. SD

Tripp County, South Dakota, 160 AC +/-



- Boundary
- Stream, Intermittent
- River/Creek
- Water Body



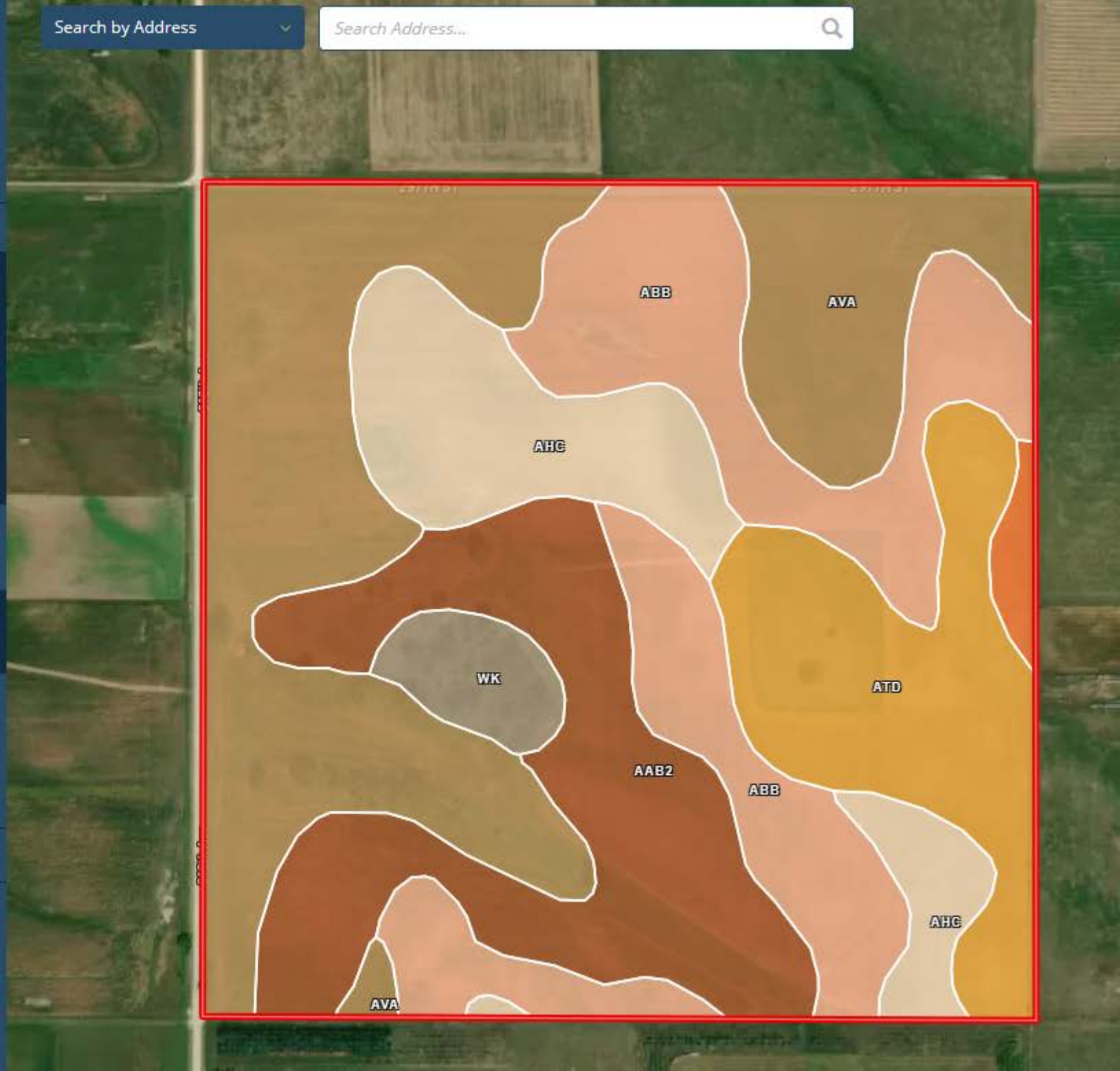
ACRES

CAPABILITIES

WAPI

Boundary 159.89 ac

CODE	DESCRIPTION	ACRES	%	CPI	NCCPI	CAP
AvA	Anselmo-Vetal fine sandy loams, 0 to 3 percent slopes	50.29	31.45%	61	48	3e
AbB	Anselmo fine sandy loam, 3 to 6 percent slopes	34.96	21.87%	54	36	3e
AaB2	Anselmo loamy fine sand, 0 to 9 percent slopes, eroded	29.06	18.17%	48	32	6e
AtD	Anselmo-Longpine fine sandy loams, 10 to 20 percent slopes	21.37	13.37%	28	34	6e
AhC	Anselmo-Holt fine sandy loams, 3 to 9 percent slopes	18.37	11.49%	50	39	3e
Wk	Whitelake-Lute fine sandy loams	4.2	2.63%	40	26	4e
AbC	Anselmo fine sandy loam, 6 to 11 percent slopes	1.64	1.03%	45	35	4e
Totals		50.72 CPI	38.85 NCCPI	3.98 Cap.		
159.89 ac		Average	Average	Average		





Colome

12 MILES SOUTH OF COLOME, SD

2.5 MILES WEST ON 297TH STREET



Millboro