

Tract #3

TRACT 3 INFORMATION:

Tract #3: 611 +/- acres of certified organic crop and pasture ground. Present use is 87.32 tillable acres currently in Manska Pubescent Wheatgrass and Travios Grazing Alfalfa. 8 tire tanks (6 fed by Tripp County Water Users District). 2 tire tanks will be inactive until added to rural water. This property has 2 dams, 2 dugouts, and 8 paddocks. Prairie dogs were poisoned in November 2023.

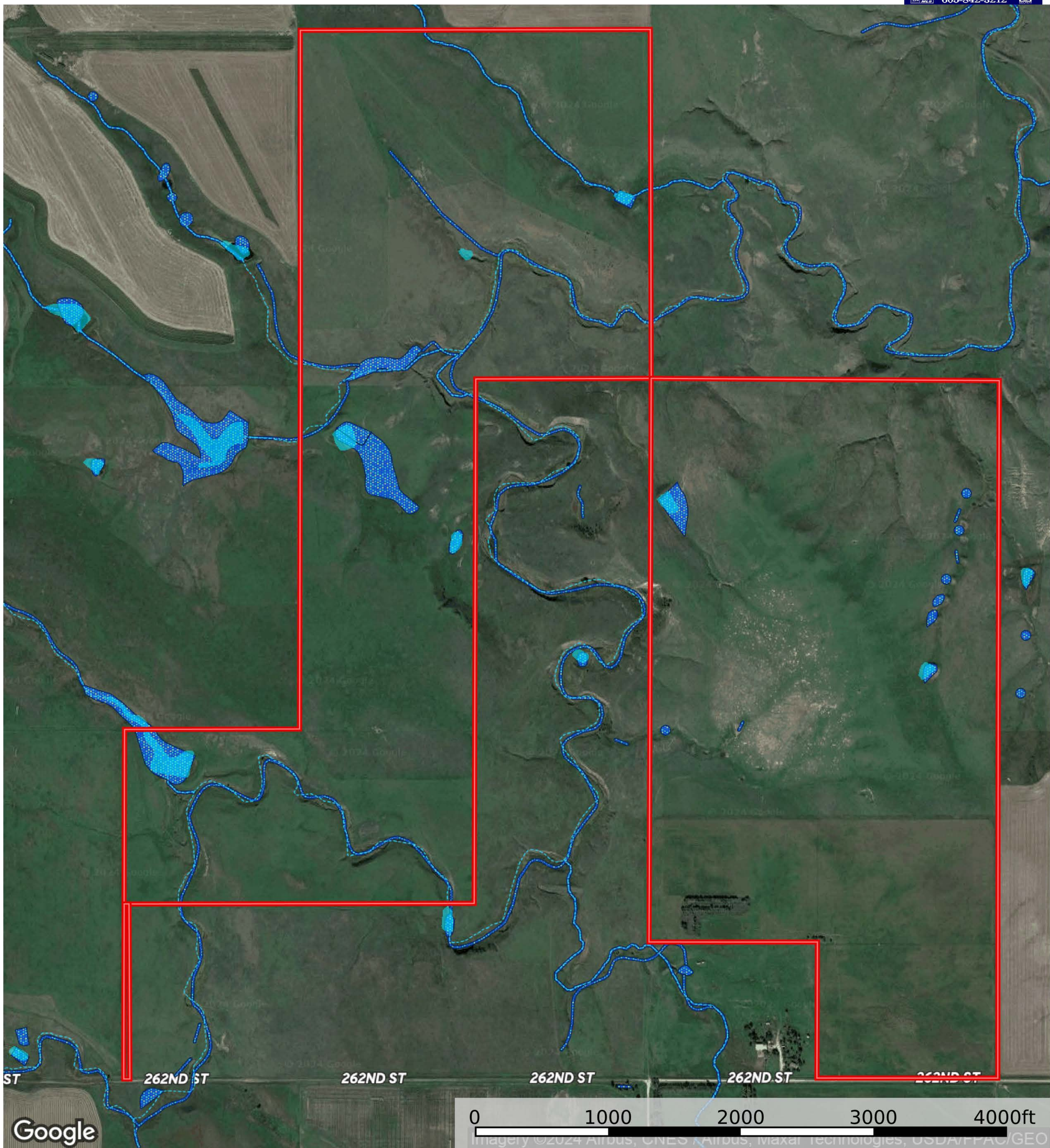
**SW1/4 LESS N1/2N1/2SW & LESS S 1,029' OF W 1,270'
in 29-102N-74W**

N1/2N1/2SW1/4 in 29-102N-74W

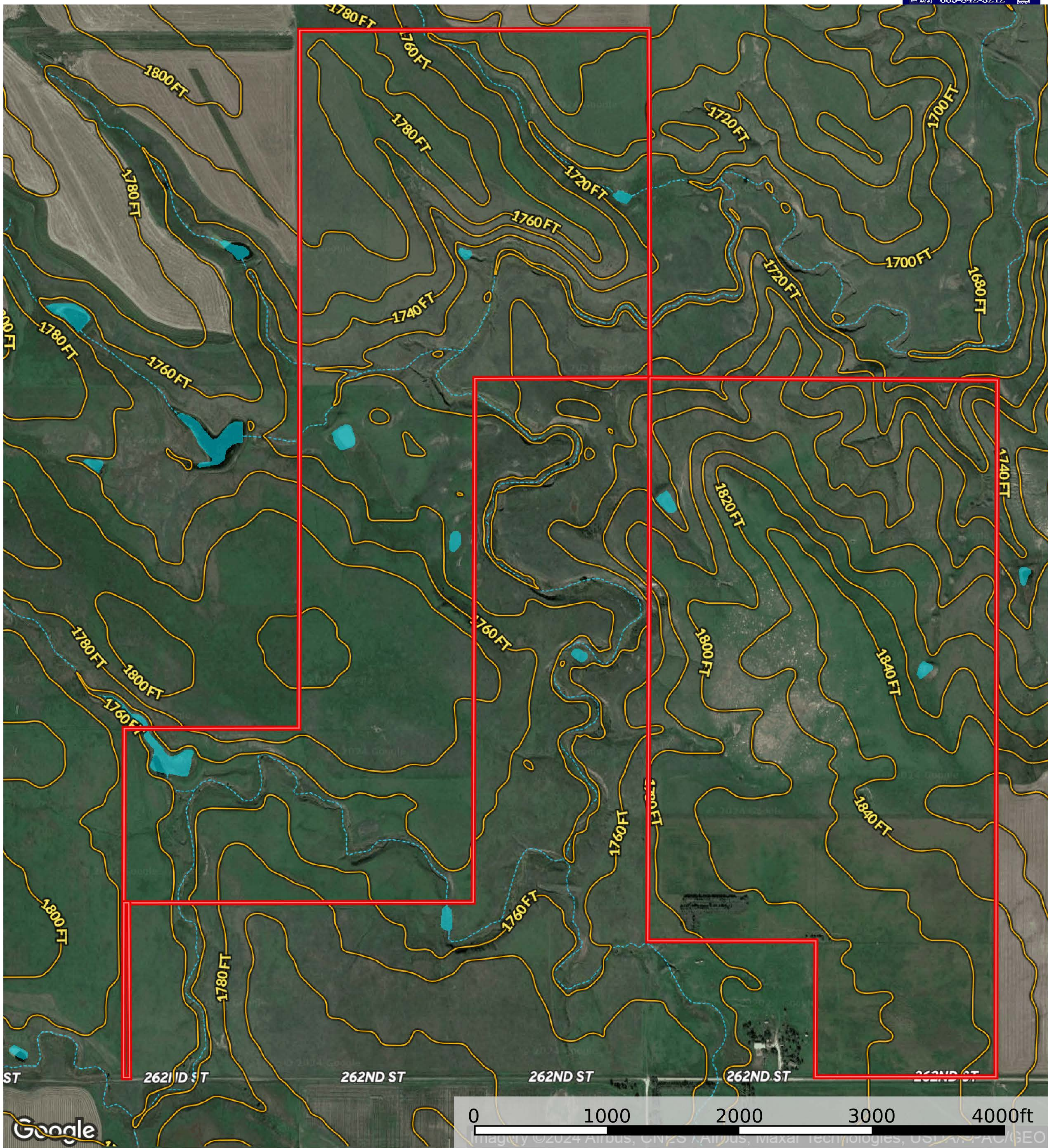
NW1/4 29-102N-74W

SE1/4 19-102N-74W

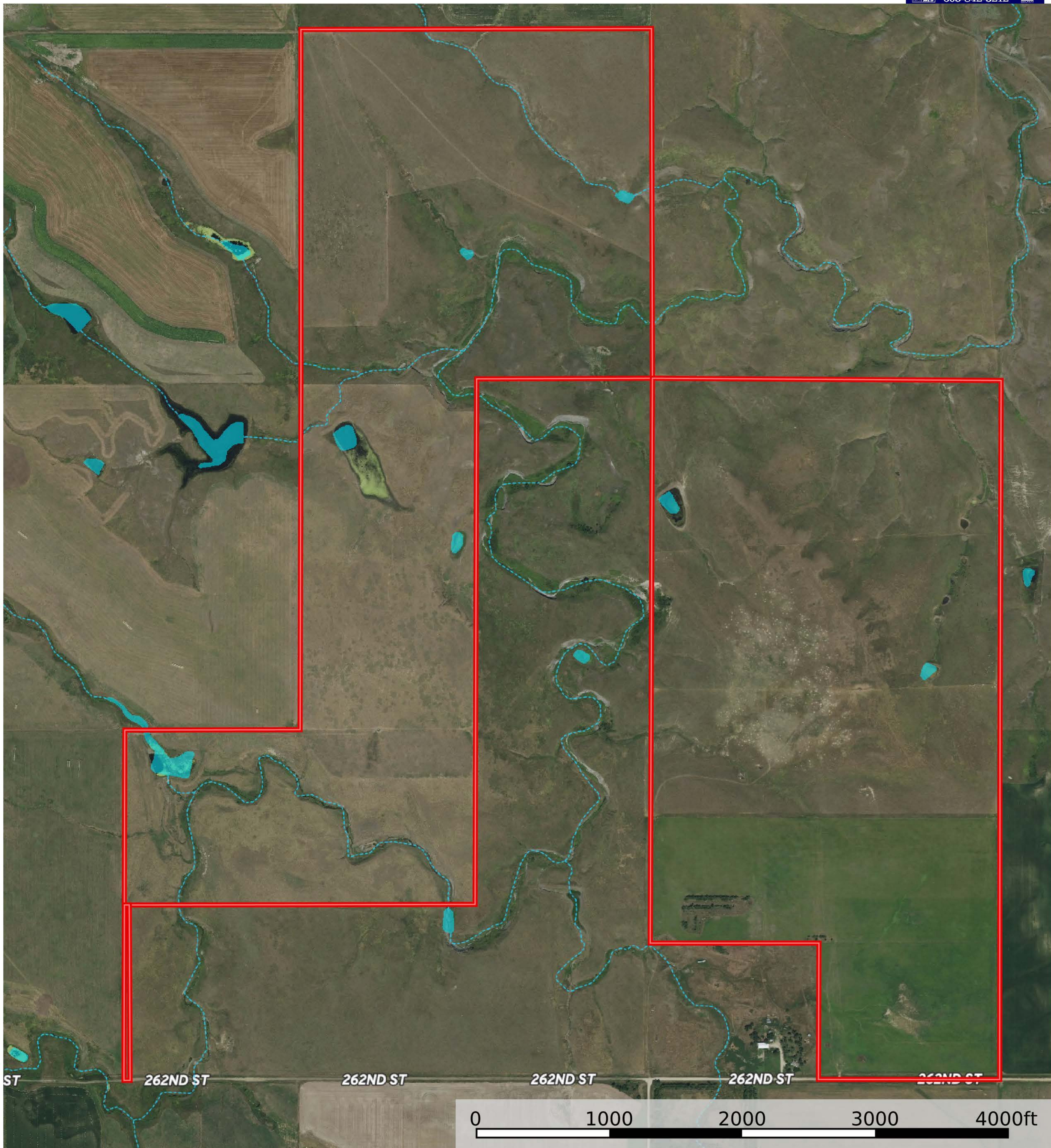
**NE1/4SW1/4; NW1/4SE1/4; W1/2NE1/4; 1AC STRIP 2
RODS WIDE OFF THE WEST SIDE OF THE SE1/4-SW1/4
30-102N-74W**



- Boundary
- Wetlands
- Riparian
- Stream, Intermittent
- River/Creek
- Water Body
- Townships



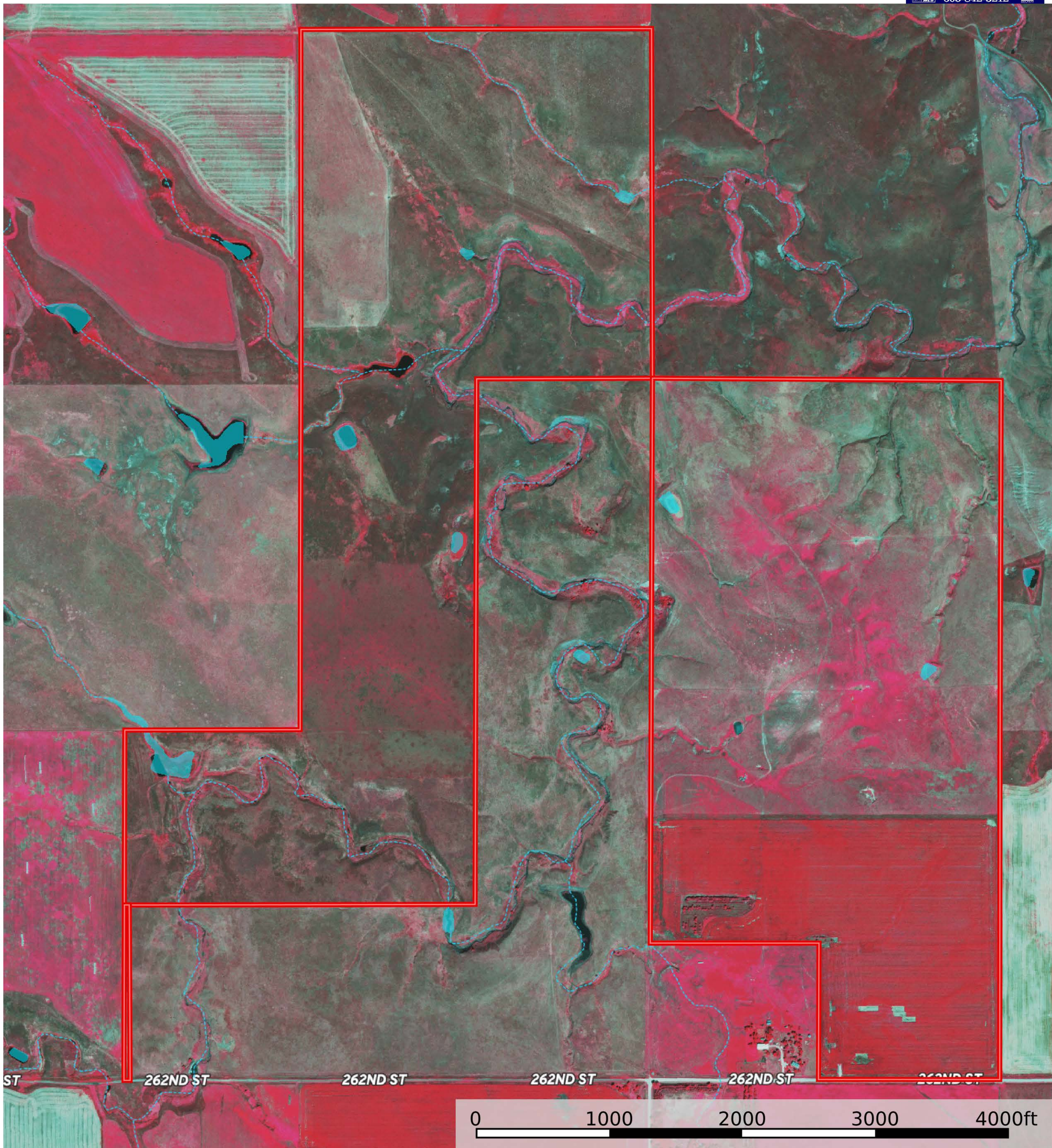
- Boundary
- Stream, Intermittent
- River/Creek
- Water Body
- Townships



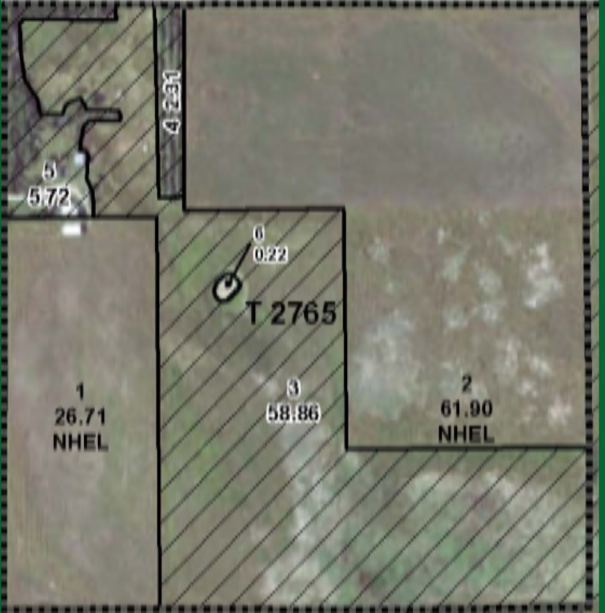
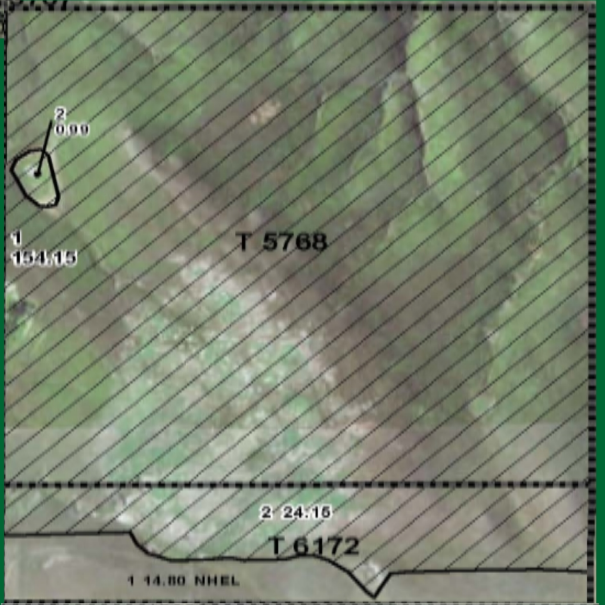
- Boundary
- Stream, Intermittent
- River/Creek
- Water Body
- Townships

Ekberg Ranch Auction

Tripp County, South Dakota, AC +/-



- Boundary
- Stream, Intermittent
- River/Creek
- Water Body
- Townships



Tract 3 ASCS MAP