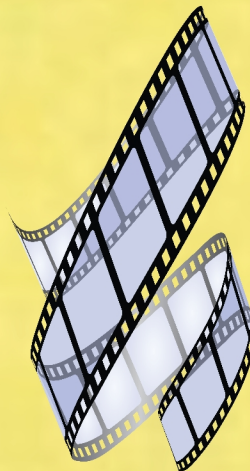


Price: \$250,000

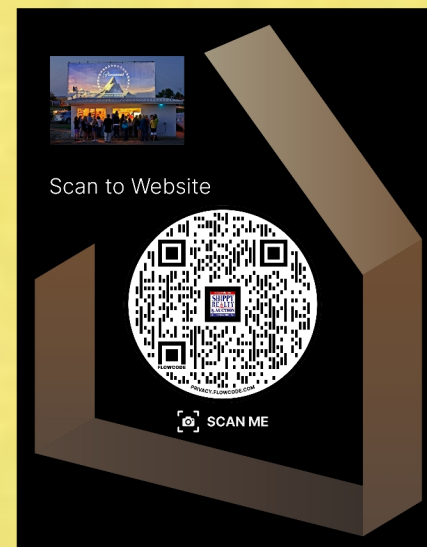


Winner Drive-in Theater plus home on 10 acres

The drive-in theater opened in 1950, it is a seasonal theater (open from April to September) with a concession building, picnic area, and playground. Open this season by showing digital movies like Top Gun, Dr. Strange, etc. Sound by FM radio with a capacity of 375 vehicles. The drive-in also hosts community picnics. The theater complex is on 10 (+/-) acres.



- WINNER DRIVE-IN THEATER**
- \$90,000 to \$100,000 of inventory
 - Digital projector \$100,000
 - Commercial freezer
 - Playground equipment
 - Picnic tables
 - Cement concession building
 - Ice cream machine
 - Warmer for butter and caramel
 - Popcorn machine
 - Popcorn machine
 - Much more!



Winner Drive-in Theater, Winner, SD

Tripp County, South Dakota, 10 AC +/-



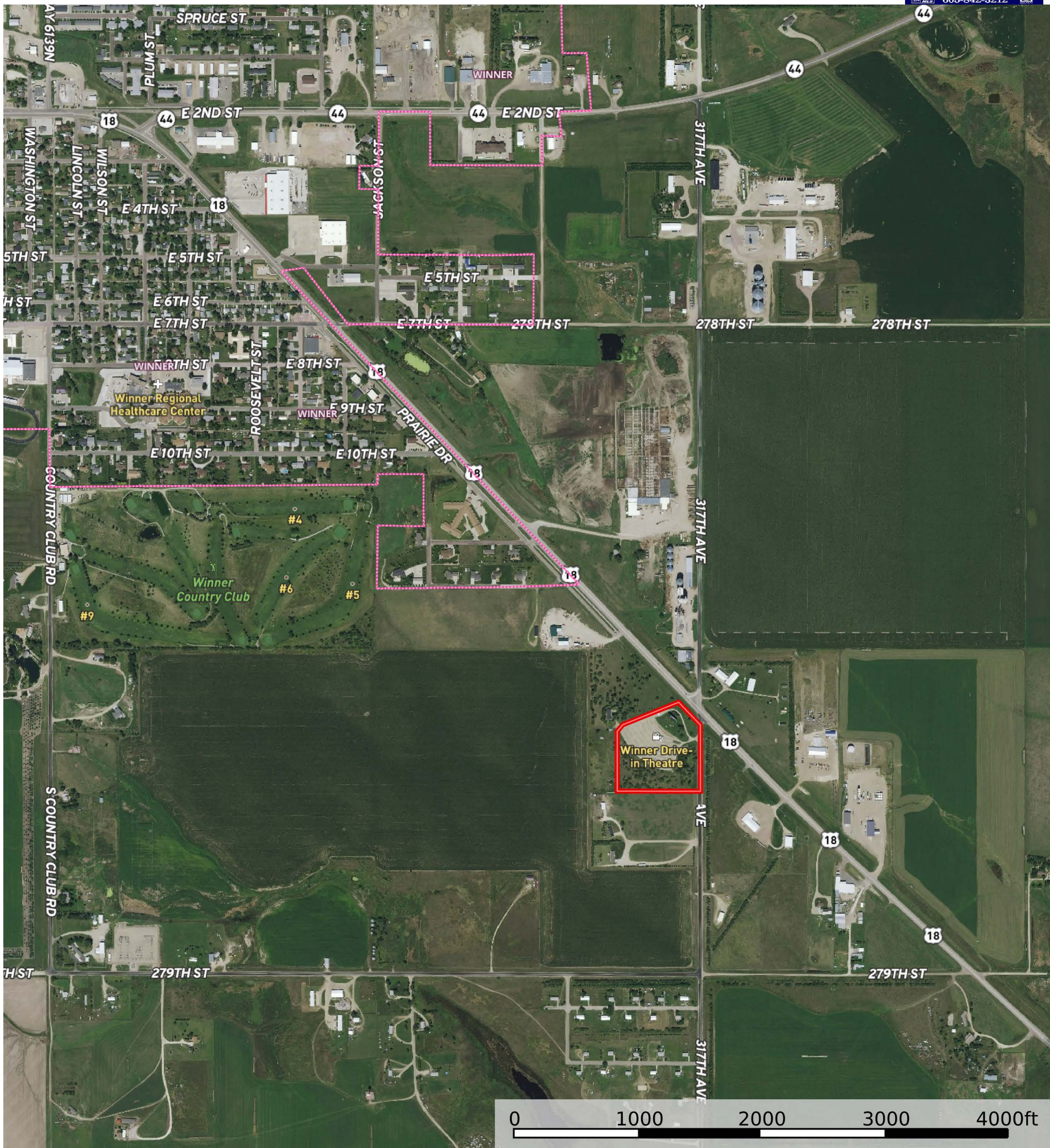
Winner Drive-in Theatre

0 100 200 300 400ft

- Boundary
- Aerodrome
- Heliport
- Seaport
- Glider Port
- Ultra Light
- Ballon Port

Winner Drive-in Theater, Winner, SD

Tripp County, South Dakota, 10 AC +/-



- Boundary
- Aerodrome
- Heliport
- Seaport
- Glider Port
- Ultra Light
- Ballon Port