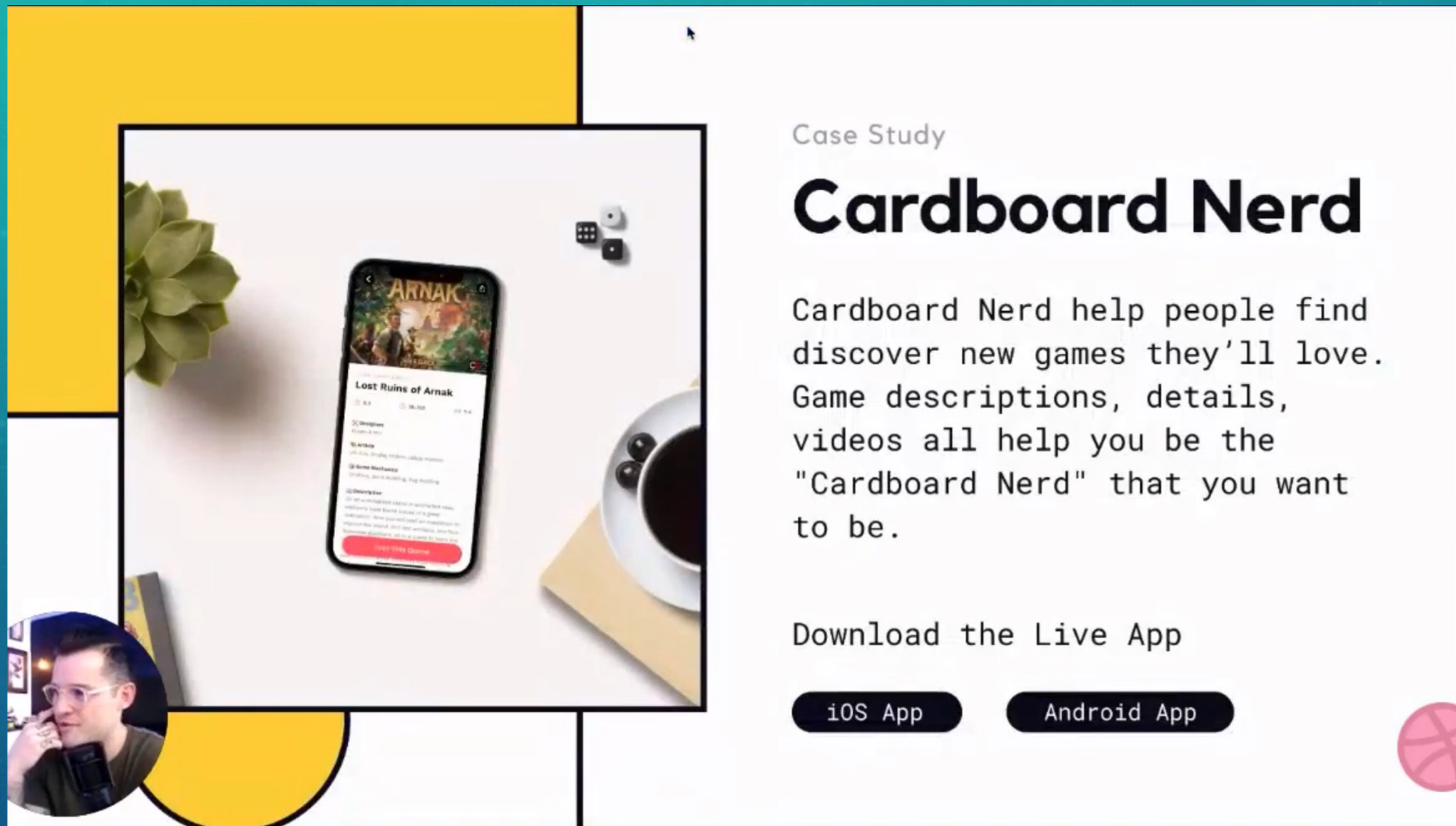


Creating an MVP – PART 1



Tools: Figma = Prototype, Airtable = Backend, Bravo = Frontend
API is connecting between Airtable & Bravo

NoCode

- What is NoCode?
- Web and Mobile
- Learning Curve
- What it can do for teams?
- What it can do for clients?
- What it can do for you?

webflow

Figside 
beta

 **Bravo**

Adalo 

Glide

.bubble

1. Setup your Figma file with Bravo tags and Bravo containers

Set up your file like a template that can be filled with data

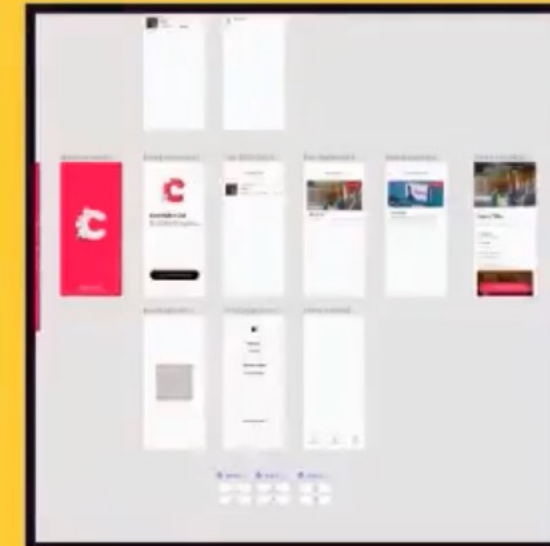
2. Connect Design to Data

Use API(or Airtable)to populate real data for you app

3. Send to view or publish live

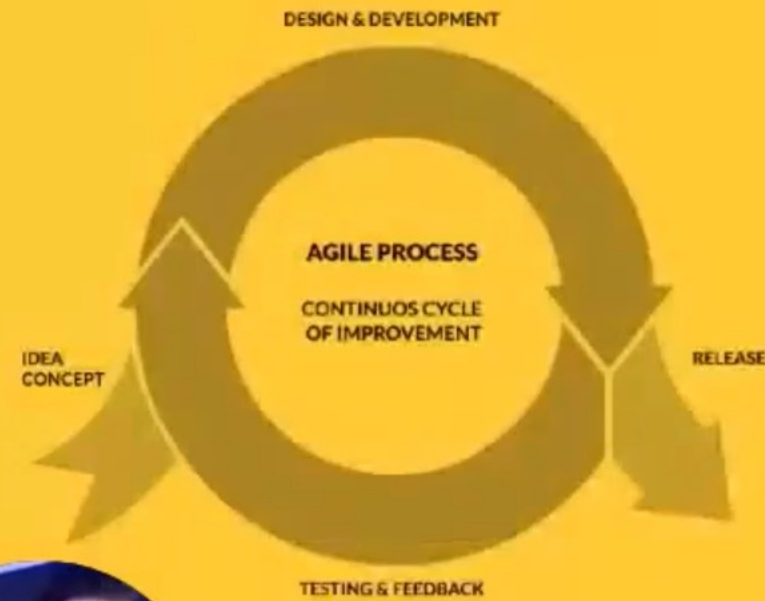


to clients or teams through Bravo or
push live to both app stores



	1	2	3	4	5	6	7	8	9	10	11	12	13	14	15	16	17	18	19	20	21	22	23	24	25	26	27	28	29	30	31	32	33	34	35	36	37	38	39	40	41	42	43	44	45	46	47	48	49	50	51	52	53	54	55	56	57	58	59	60	61	62	63	64	65	66	67	68	69	70	71	72	73	74	75	76	77	78	79	80	81	82	83	84	85	86	87	88	89	90	91	92	93	94	95	96	97	98	99	100
Team Lead	1	2	3	4	5	6	7	8	9	10	11	12	13	14	15	16	17	18	19	20	21	22	23	24	25	26	27	28	29	30	31	32	33	34	35	36	37	38	39	40	41	42	43	44	45	46	47	48	49	50	51	52	53	54	55	56	57	58	59	60	61	62	63	64	65	66	67	68	69	70	71	72	73	74	75	76	77	78	79	80	81	82	83	84	85	86	87	88	89	90	91	92	93	94	95	96	97	98	99	100

Product Design Loop



Idea Concept

Communication is the hardest part of designing. Clients and teams need you to take the lead.

Design & Dev

Just because it's clear to you, doesn't mean it's not foggy to them. Simplify, explain, and confirm.

Testing & Feedback

Do the previous three over and over again. The more consistent you are the quicker success will come.

Release

There needs to be shared understanding of patterns, systems, and structures.

Bravo Tips & Tricks




Bravo Studio Steps

- 1 Build your database first
- 2 Strip your design in Figma down to templates
- 3 Wrap each section of you design into a **[container]**
- 4 Label those **[container]**'s clearly
- 5 Add **Bravo Tags** to layers as needed
- 6 Get a Figma Share link and upload to Bravo
- 7 Build Your Data Library in Bravo
- 8 Connect Your Database information
- 9 Bind the Data to your Designs
- 10 View in Bravo Vision
- 11 Share Bravo Vision Version
- 12 Upload to App Stores or Testflight on iOS

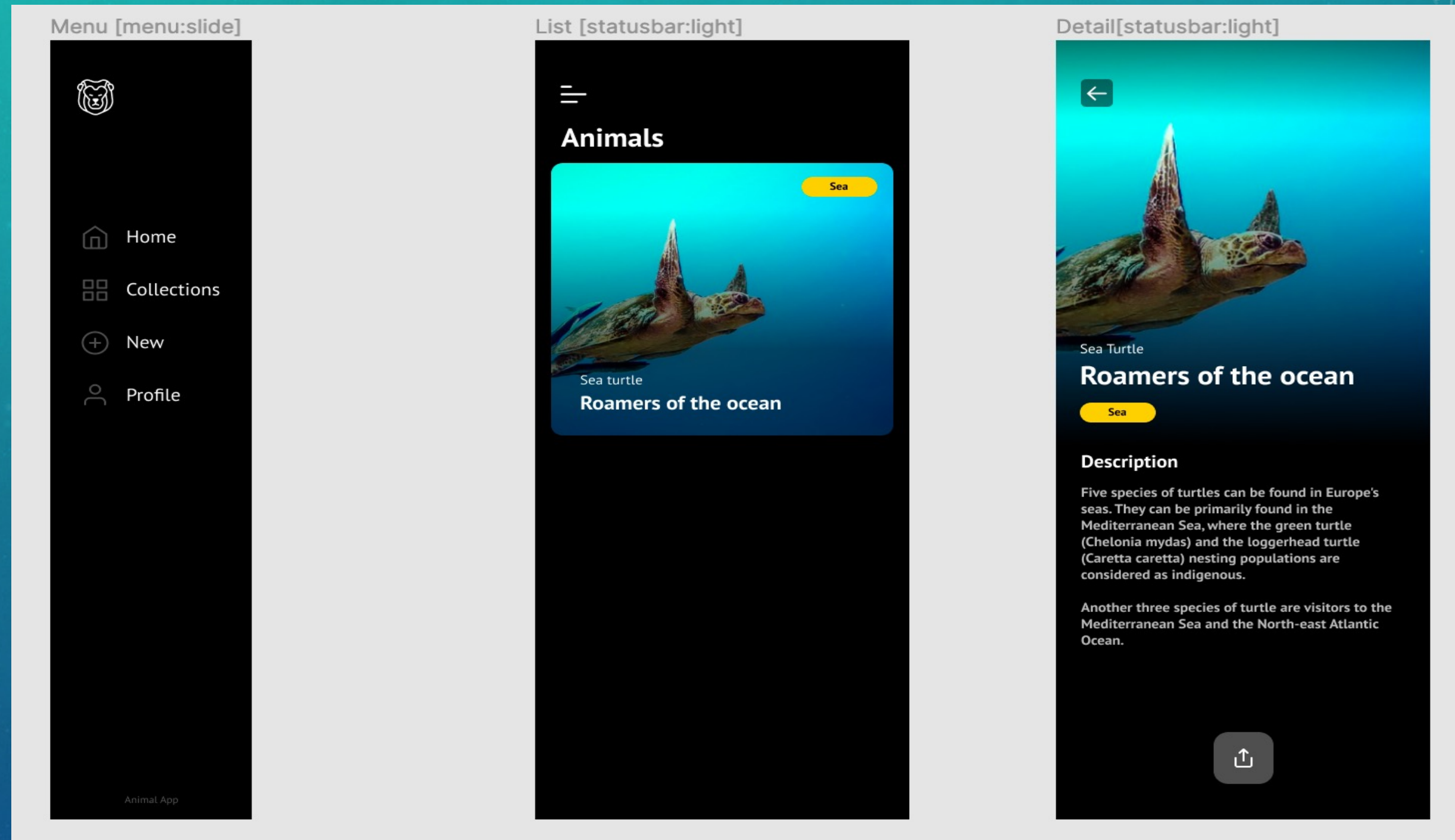


Bravo Tips & Tricks

- 1 Use ******* on layers in your Figma file that will have Data bound to it. This helps during binding step
- 2 Get the basics working forst then layer on other Bravo tags and functionality
- 3 Images can be tricky to bind, if uploaded into Airtable use the "Image 0 url" option
- 4 Make sure while binding data to list screens you set the outer **[container]** to pull from "Records"
- 5  The Bravo Tags Master List is a great resource to go back to is you need help
- 6 Name your Figma Layers, and your database rows the same thing to keep from getting confused
- 7 Test often to make sure you haven't messed somethign up
- 8 Experiment, Have Fun, YOU'RE MAKIN APPS BABY!!!!

Jesse Showalter
hello@jesseshowalter.com
@iamjesseshow

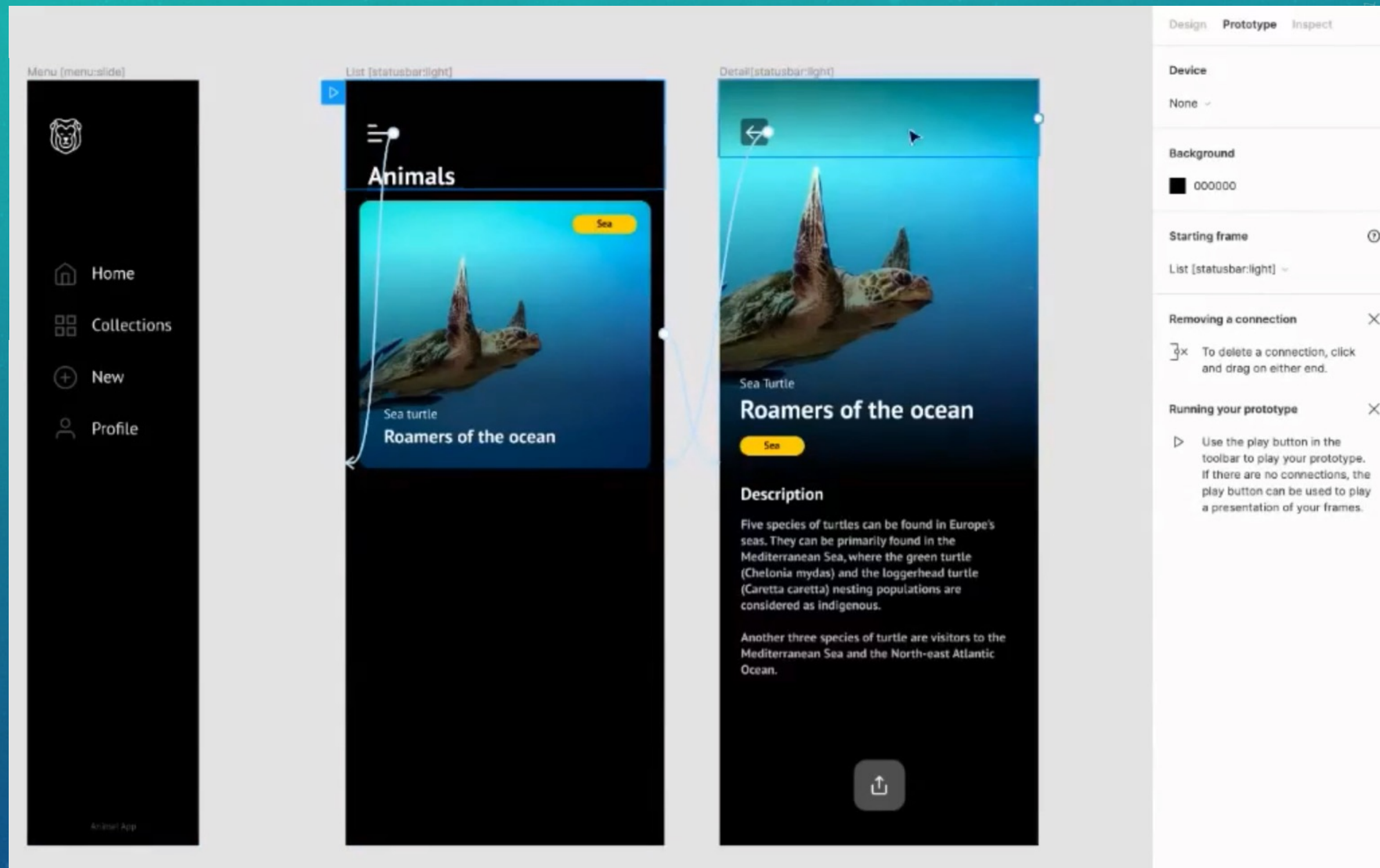
2nd - CREATE A TEMPLATE IN FIGMA



Template will pull in **ALL** your data from AIRTABLE

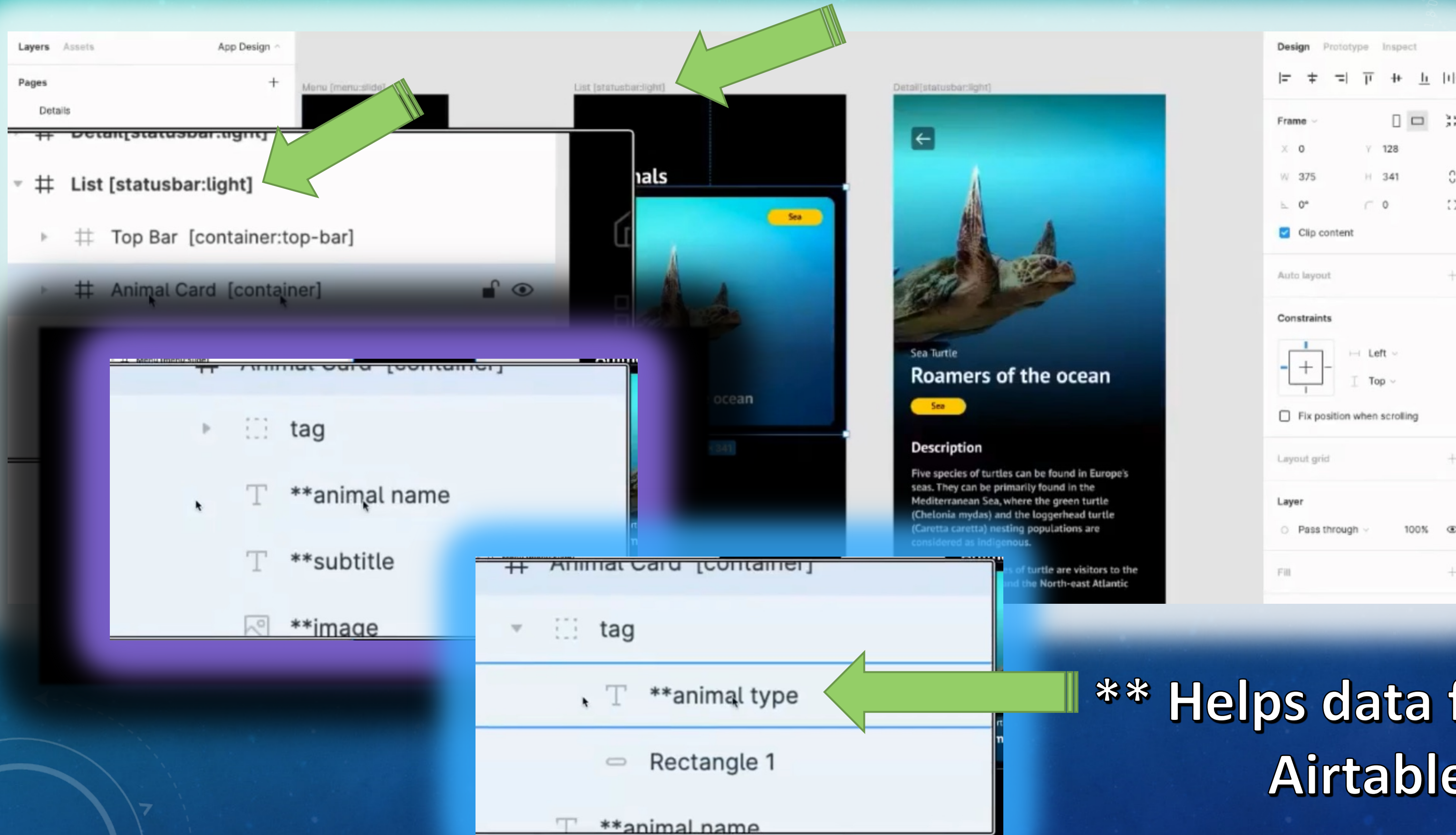
USE “SIMPLE PROTOTYPING” on the Template

This is the
BRAVO
TEMPLATE

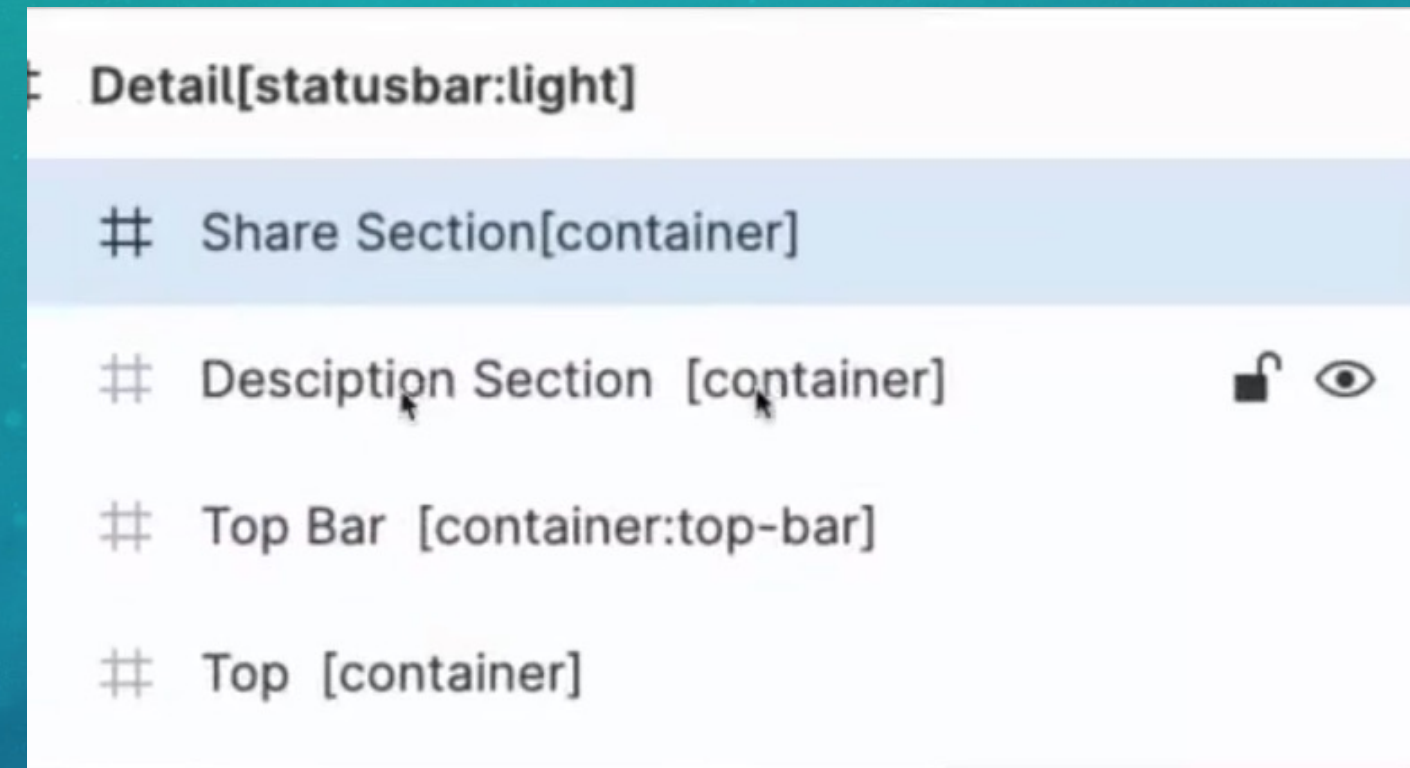


This will pull & place DATA, Streamlining the process

USE BRAVO SHEET TO LABEL CONTAINERS



How to Label / Tag - Containers



Link to Bravo – Master Tag List

<https://www.notion.so/Bravo-Tags-Master-List-145bec845f0b4afaa9e3bb8321b218a8>

MUST STACK FRAMES / CONTAINERS!

Layers Assets App Design

Pages

- Details
- ✓ App Design

Menu [menu:slide]

Detail[statusbar:light]

- Share Section[container]
- Description Section [container]
- Top Bar [container:top-bar]
- Top [container]

List [statusbar:light]

- Top Bar [container:top-bar]
- Animal Card [container]
- tag
- **animal name
- **subtitle
- **image

Design Prototype Inspect

Frame

X 0 Y 0

W 375 H 468

0° 0

Clip content

Auto layout

Constraints

Left Top

Fix position when scrolling

Sea Turtle

Roamers of the ocean

Sea

Description

Five species of turtles can be found in Europe's seas. They can be primarily found in the Mediterranean Sea, where the green turtle

Layers Assets App Design

Pages

- Details
- ✓ App Design

Menu [menu:slide]

Detail[statusbar:light]

- Share Section[container]
- Description Section [container]
- Top Bar [container:top-bar]
- Top [container]

List [statusbar:light]

- Top Bar [container:top-bar]
- Animal Card [container]
- tag
- **animal name
- **subtitle
- **image

Sea Turtle

Roamers of the ocean

Sea

Description

Five species of turtles can be found in Europe's seas. They can be primarily found in the Mediterranean Sea, where the green turtle (Chelonia mydas) and the loggerhead turtle (Caretta caretta) nesting populations are considered as indigenous.

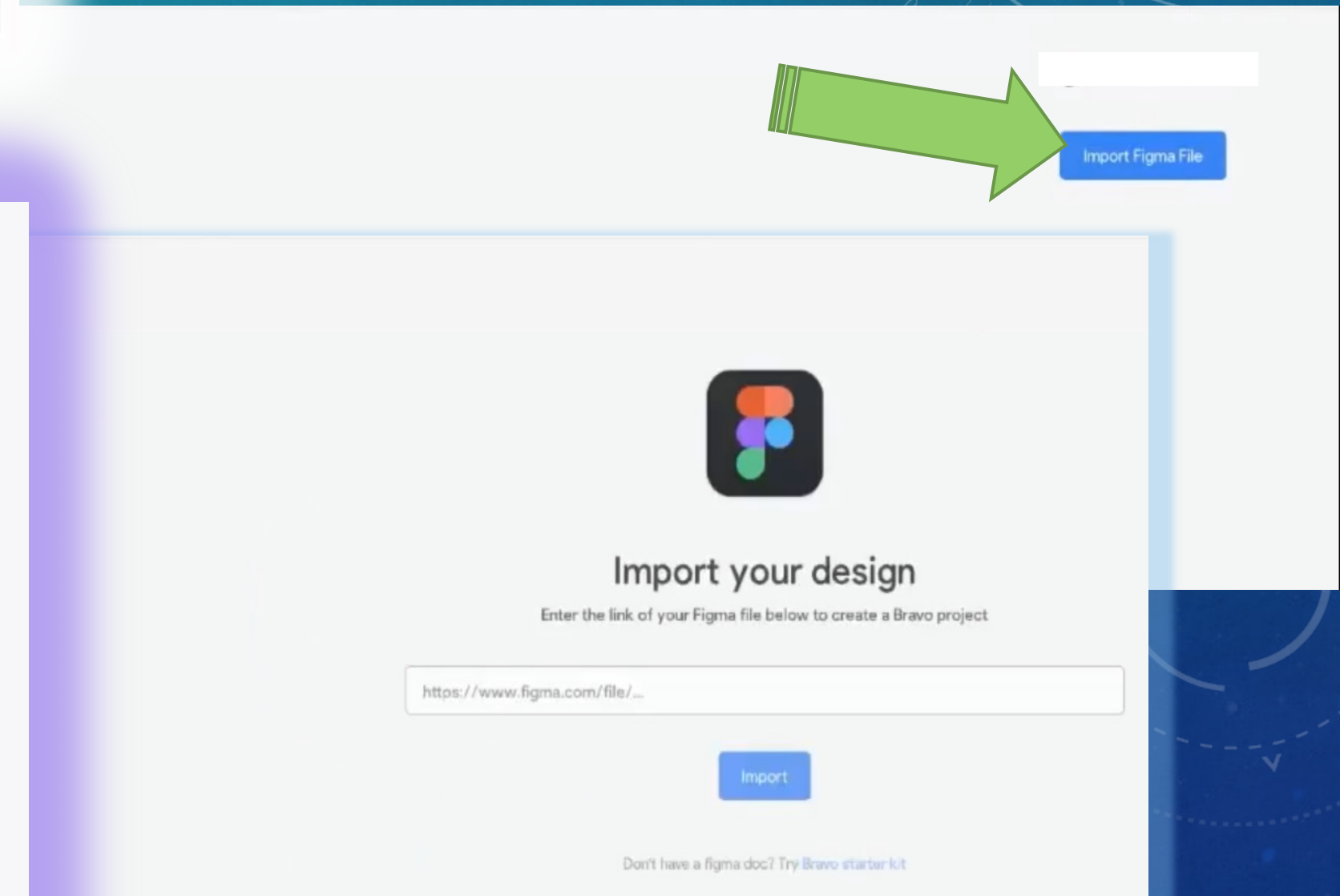
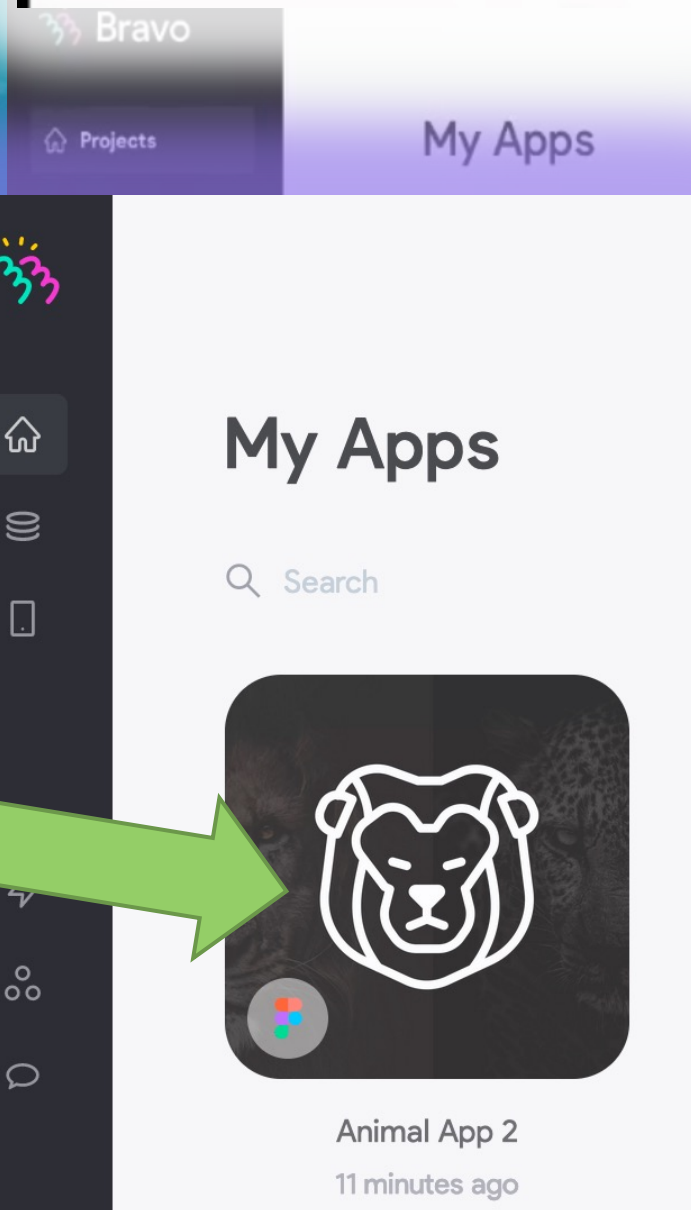
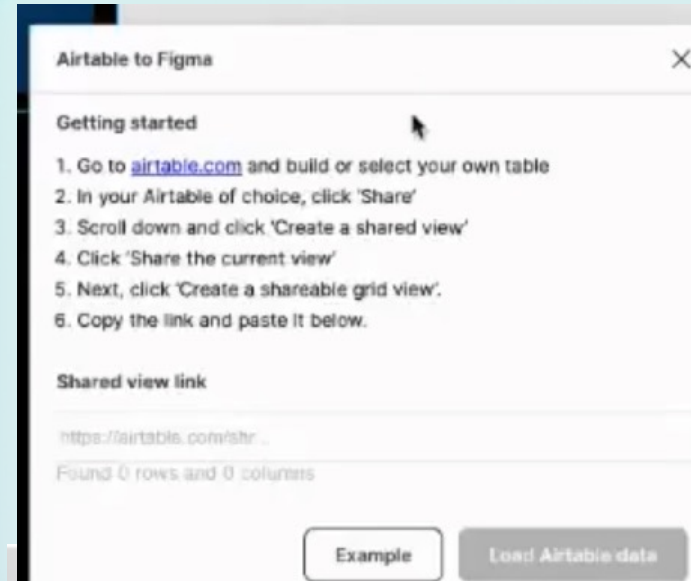
Another three species of turtle are visitors to the Mediterranean Sea and the North-east Atlantic Ocean.

Share

This pulls in data from AIRTABLE *properly*

Next Steps; Get the link & open Bravo Studio

- Connect the two
- Use 'AIRTABLE to Figma Plugin
- Import Figma File
- This populates~~>
 - Click Icon



Animal App

AnimalsAdd or import

VIEWSGrid viewHide fieldsFilterGroupSortColorShare view

Find a view

Grid view

	Animal Name	Subtitle
1	Sea Turtle	Roamers of the ocean
2	Silverback Gorilla	Wanderers of the plains
3	Panther	Stalkers of the forest
4	African Lion	Hunters of the plains
5	Brown Bear	Eaters of the fish
6	Bald Eagle	Hunters from the sky

This view is shared via a private link

People with the private link can only see cells visible in this view. The title of this page is the view name, "Grid view".

https://airtable.com/shrddOHYkyiQ4fgDS

Allow viewers to copy data out of this view

Allow data in this view to be synced to other bases

Show all fields in expanded records

Upgrade to restrict by password or email domain

Embed this view on your site

Disable shared view link

Airtable to Figma

Getting started

1. Go to [airtable.com](#) and build or select your own table
2. In your Airtable of choice, click 'Share'
3. Scroll down and click 'Create a shared view'
4. Click 'Share the current view'
5. Next, click 'Create a shareable grid view'
6. Copy the link and paste it below.

Shared view link

https://airtable.com/shrddOHYkyiQ4fgDS

ExampleLoad Airtable data

Airtable to Figma

Text node

Airtable field

**subtitle

-- Select an Airtable field

**animal name

-- Select an Airtable field

**animal type

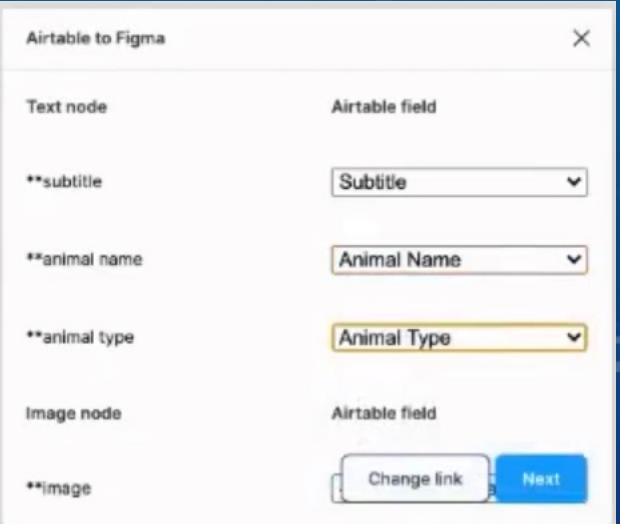
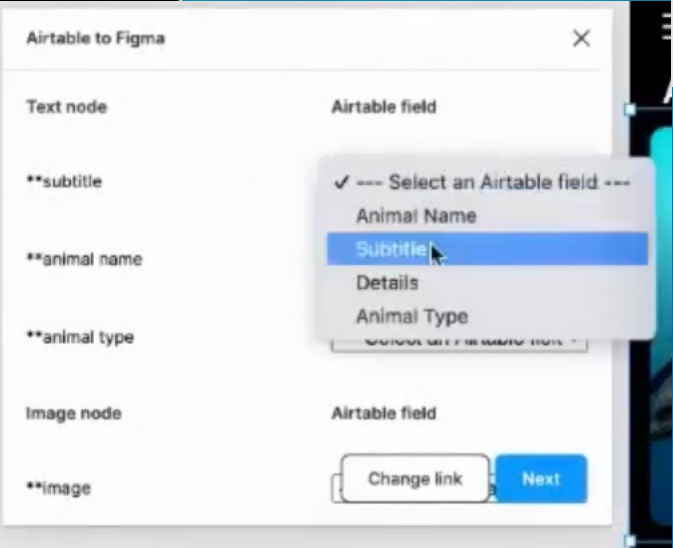
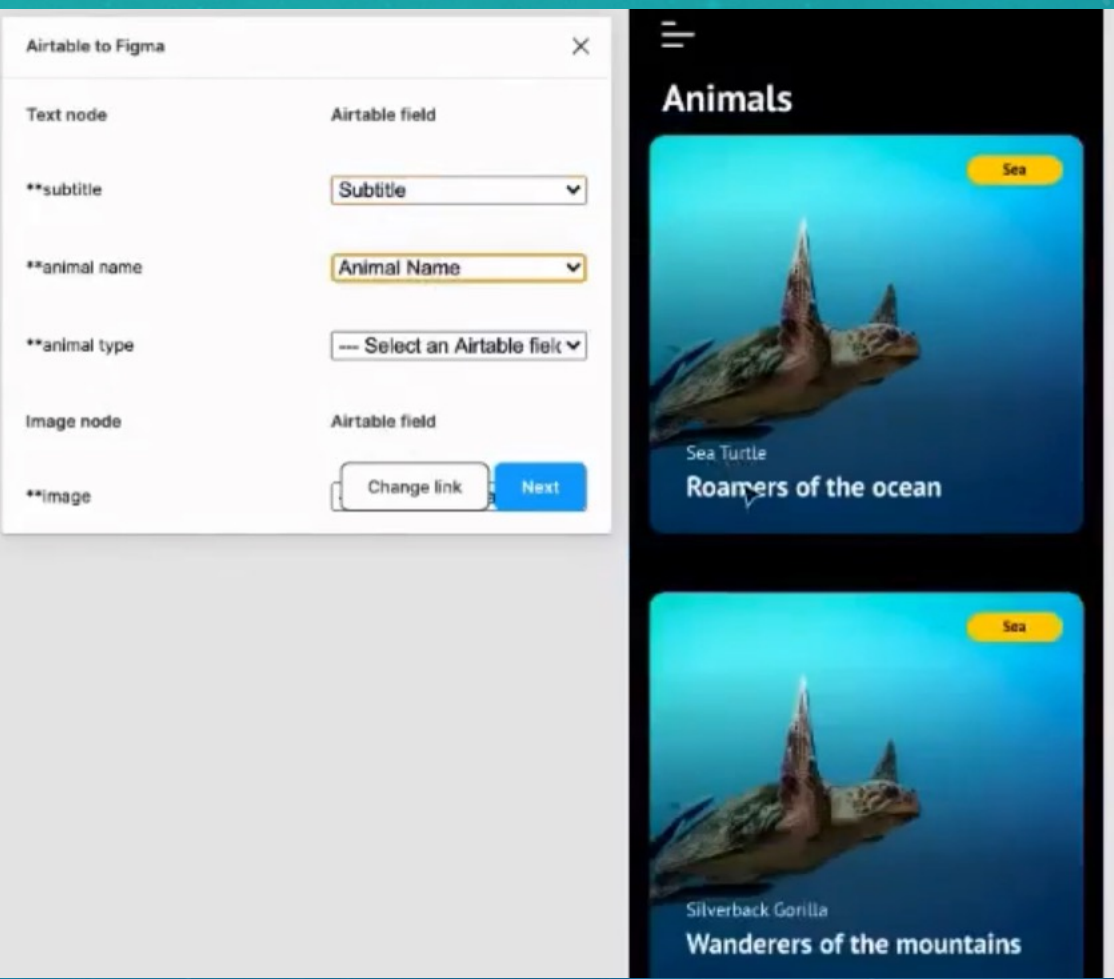
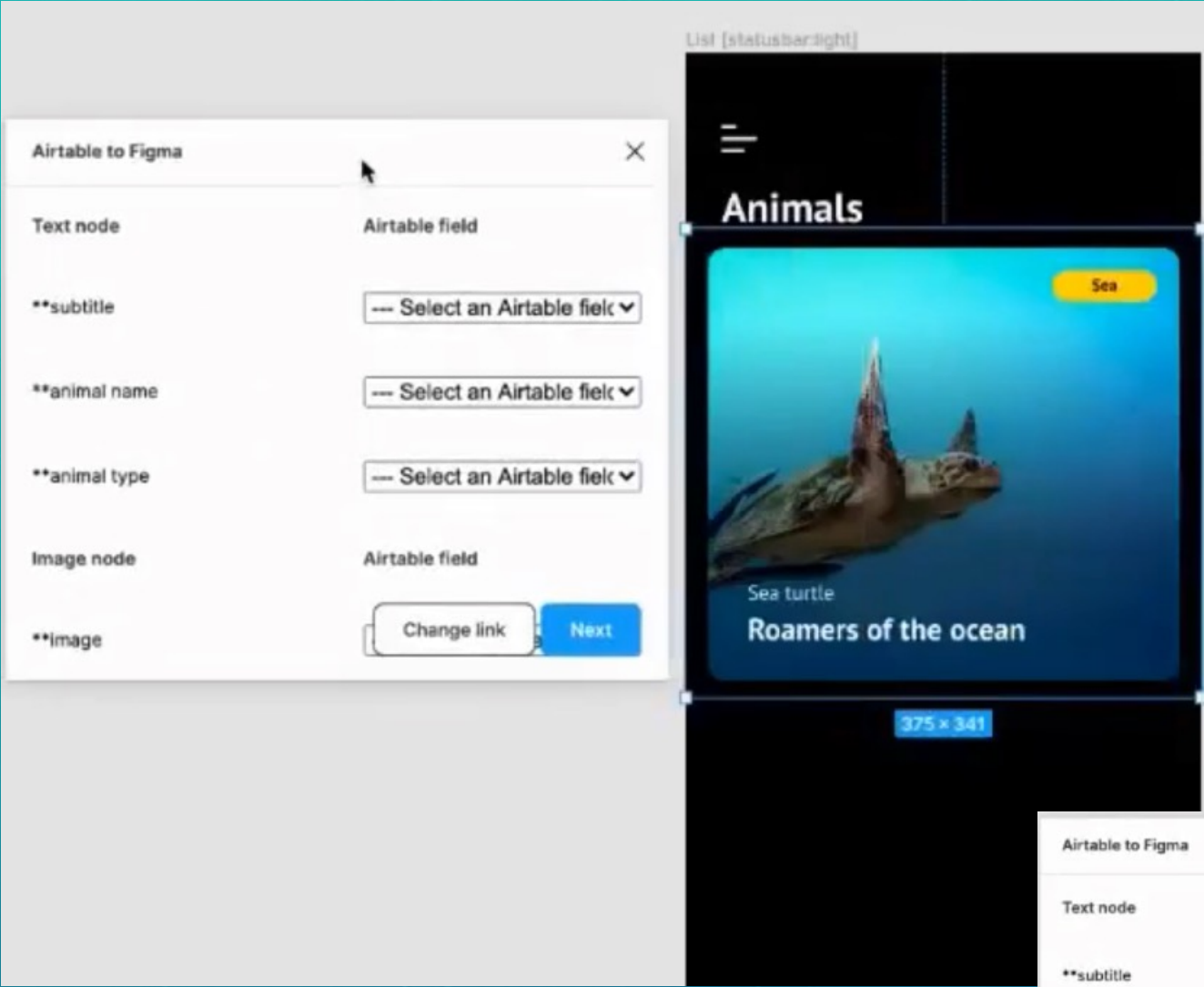
-- Select an Airtable field

Image node

Airtable field

**image

Change linkNext



Airtable to Figma

**animal name

Animal Name

**animal type

Animal Type

Image node

Airtable field

**image

Image

Change link

Next

Airtable to Figma

**animal name

Animal Name

**animal type

Animal Type

Image node

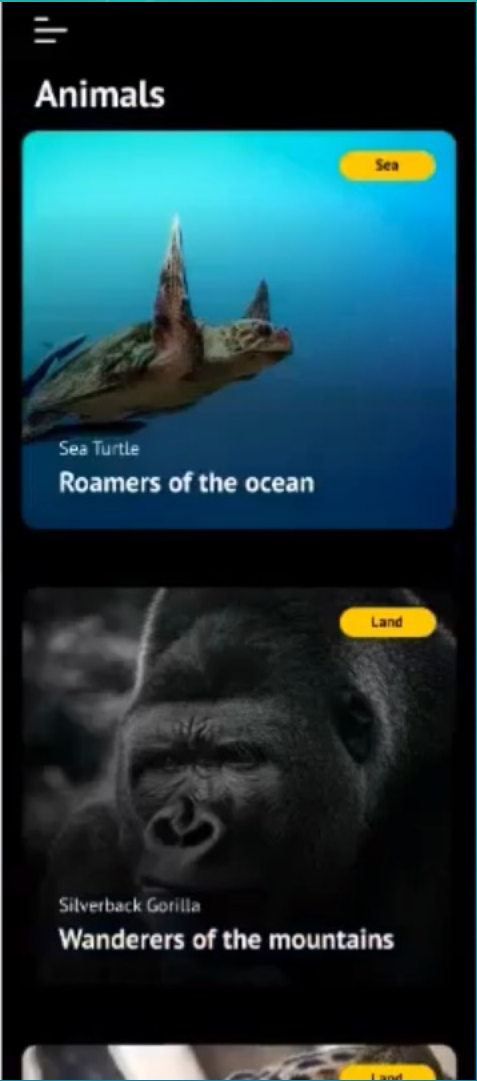
Airtable field

**image

Image

Change link

Next



Airtable to Figma

Direction

Spacing

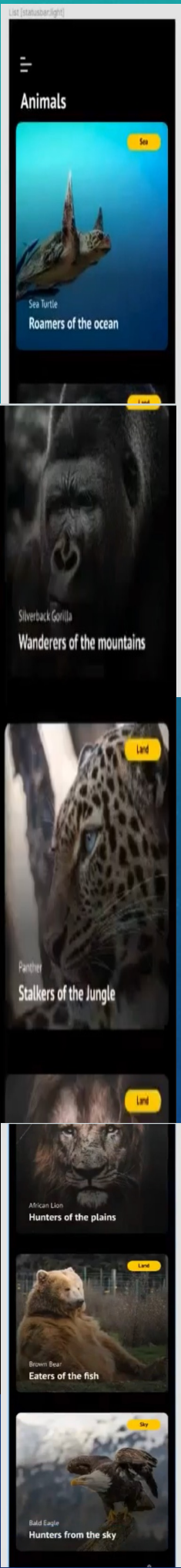
Default: 20px

Max items

Default: 100 items

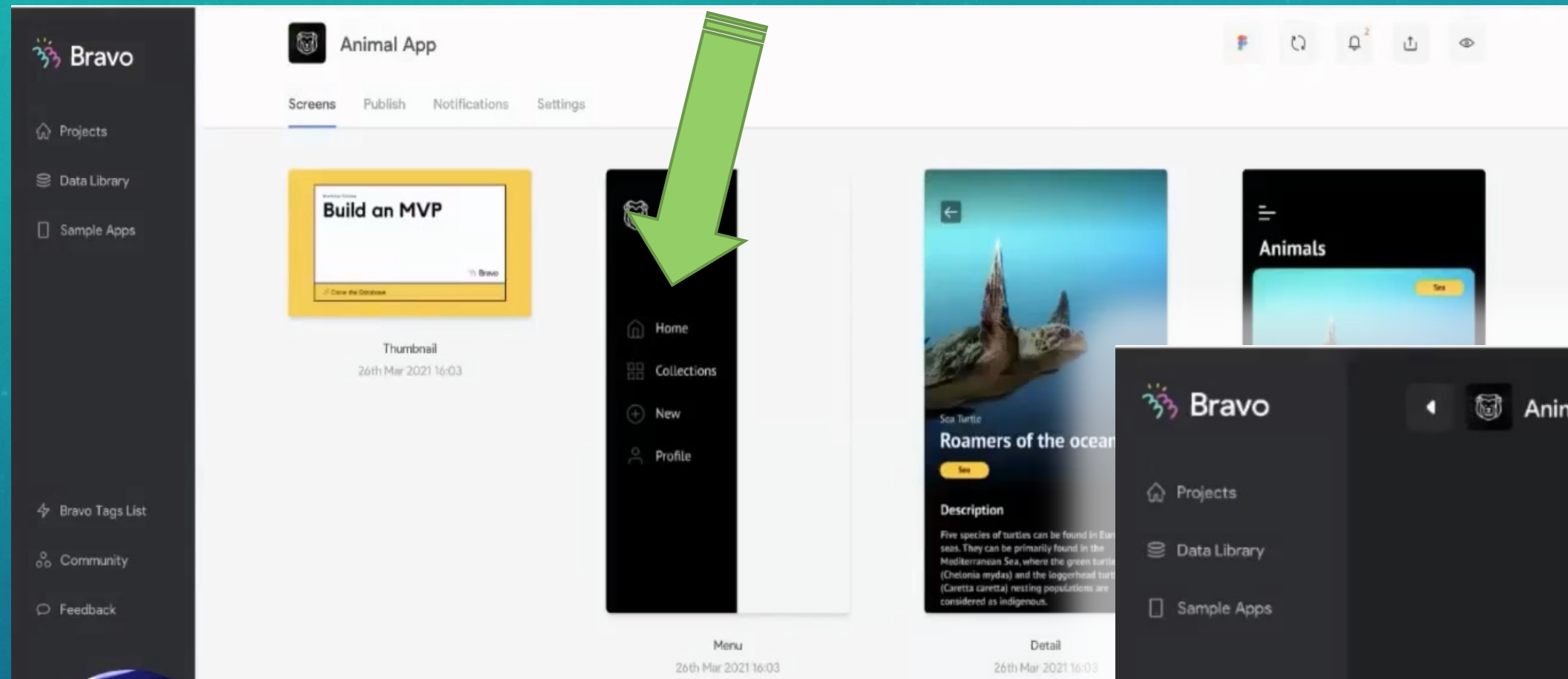
Change field mapping

Done

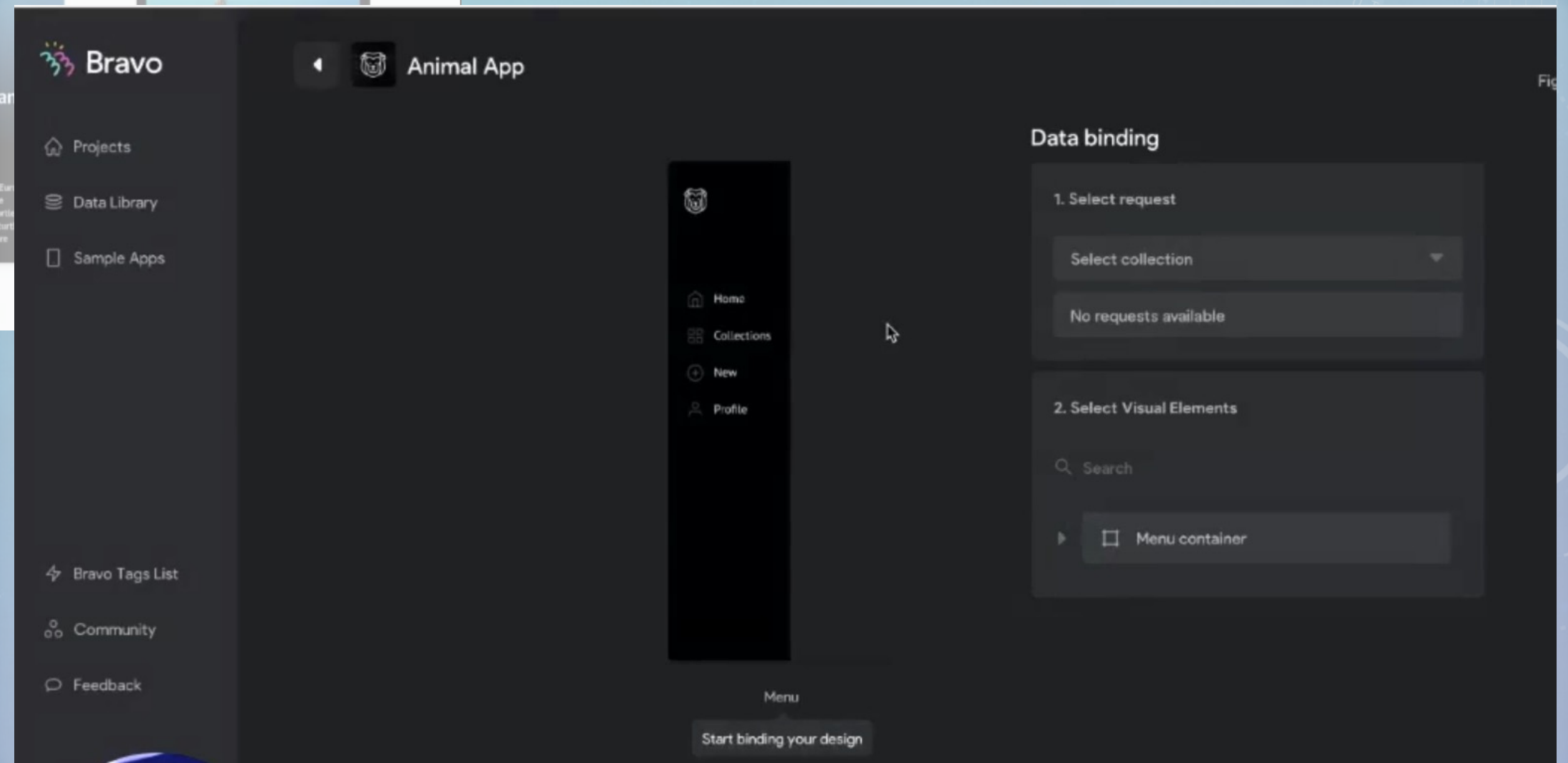


Continue;

- Clicking in this screen

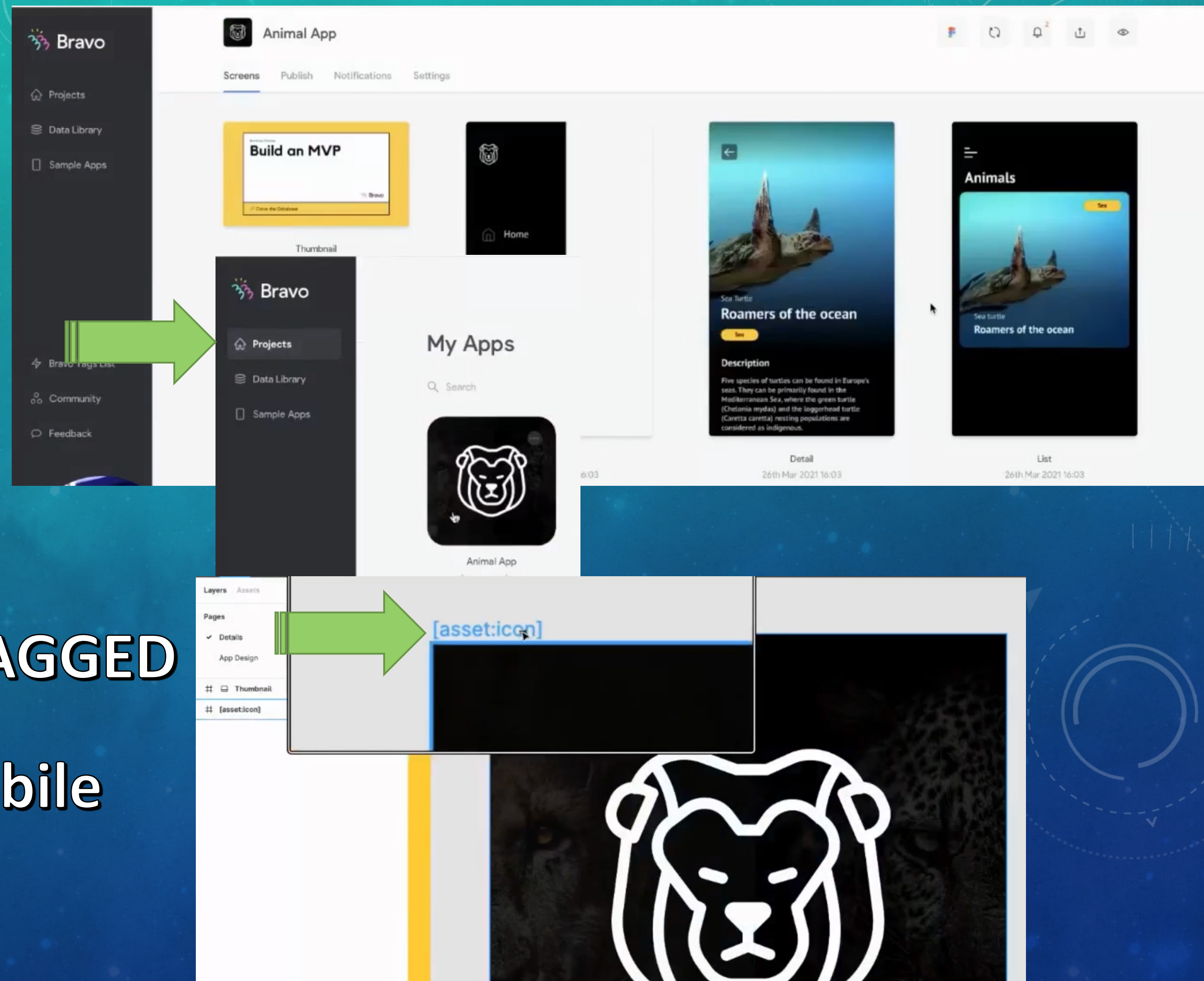


- Brings up Data Binding



Continue;

- Imported File
- Open Airtale
in another browser
Load API
- Project Loads
- Icon plugs in as TAGGED
- This shows as mobile
icon



- This populates once API is loaded

- Go back to Projects / Home

- Click on LIST

The image shows the Bravo IDE interface for a project named 'Animal App 2'. The top bar displays the project name and a URL: <https://airtable.com/shrfJZYBcTqtTub85>. The 'Requests' tab is active, showing a 'GET Animals - List' button and a 'Request URL' field. A green arrow labeled '1' points to the 'Requests' tab. Below the requests section, there are three preview cards: 'Build an MVP', 'Menu', and 'Detail'. A green arrow labeled '2' points to the 'List' preview card. The sidebar on the left contains navigation options: Projects, Data Library, Sample Apps, Bravo Tags List, Community, and Feedback.

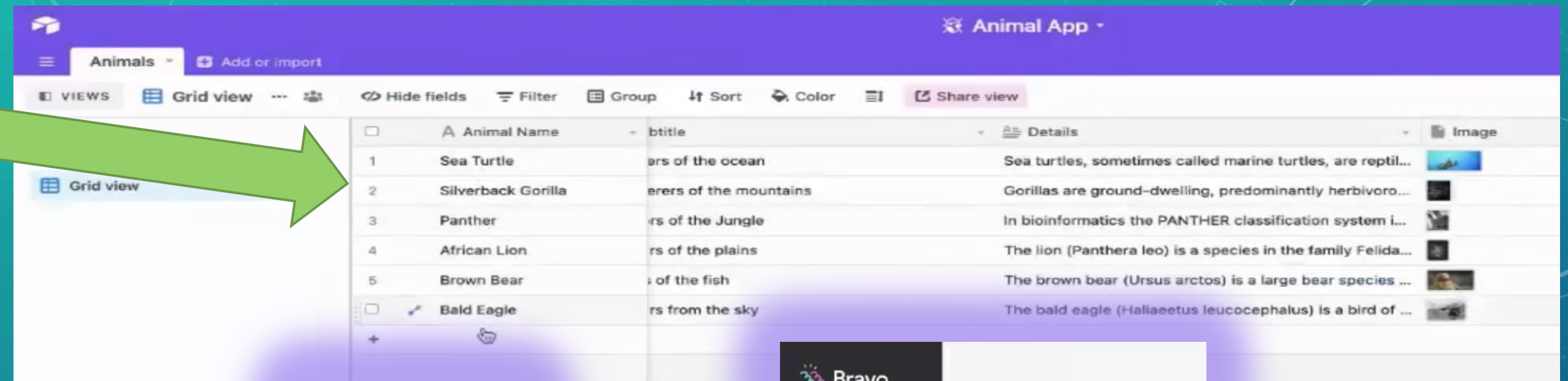
- Using Data from THIS 'List'

- NEXT STEPS

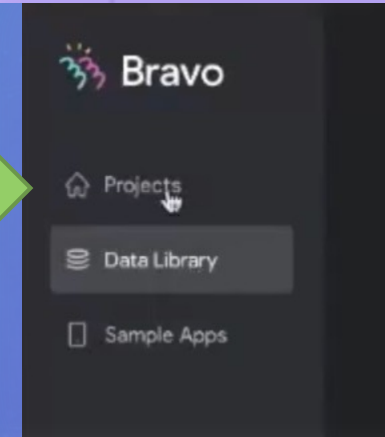
- Back to PROJECTS

- Click APP

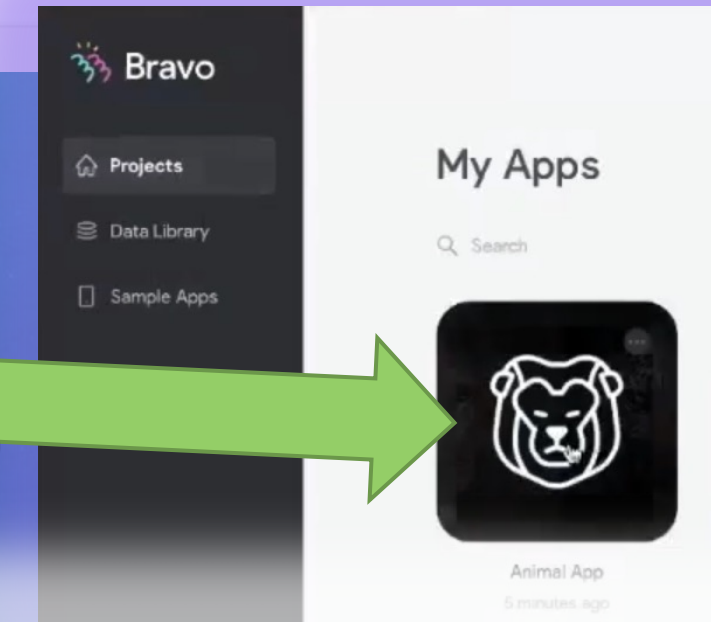
- Go to 'LIST'



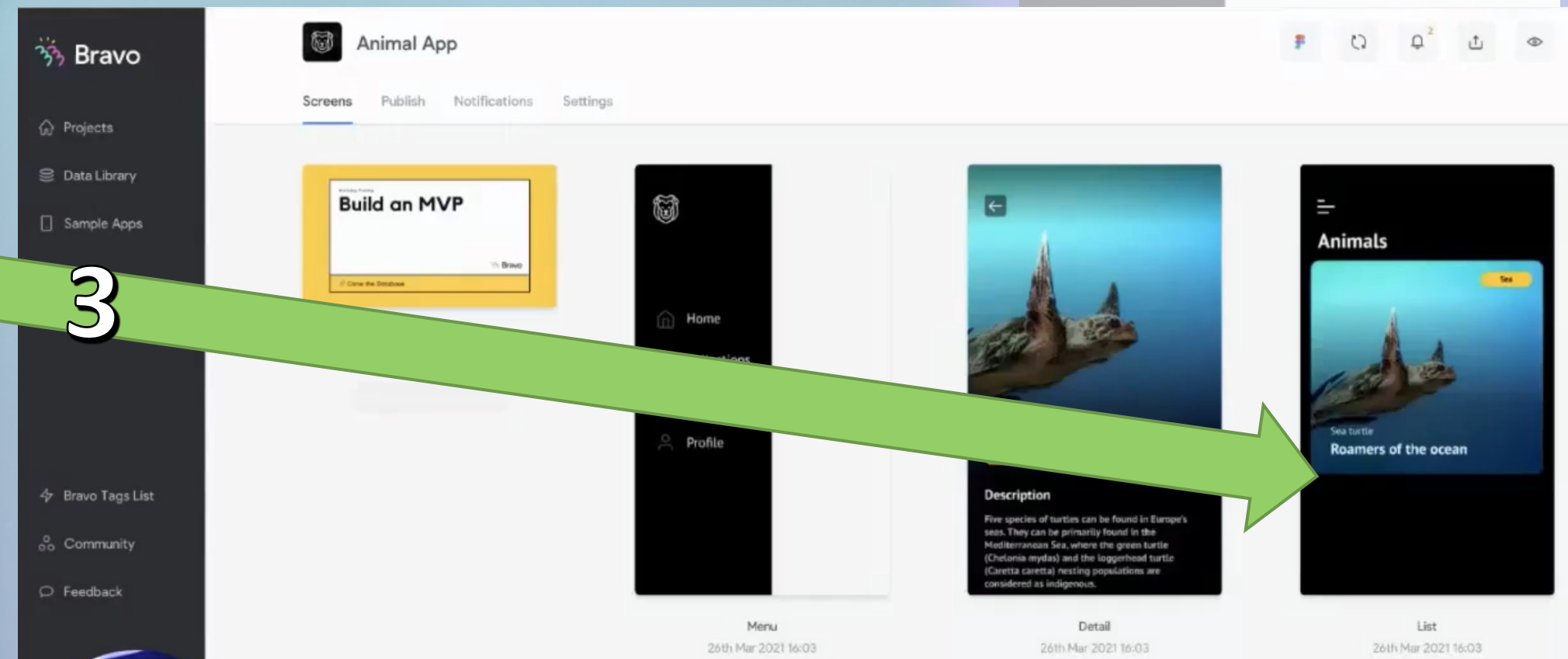
1



2



3



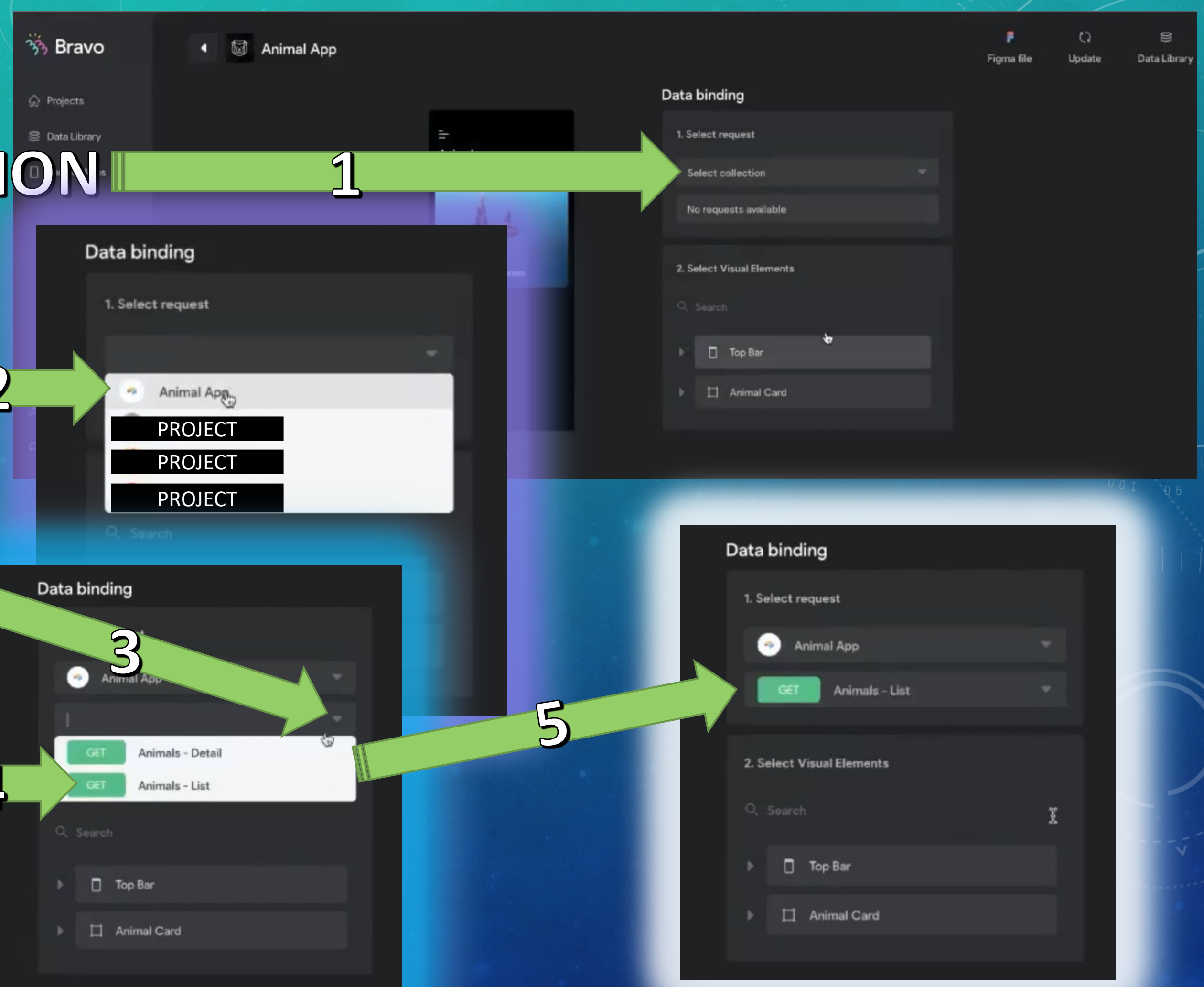
- NEXT STEPS

- Select COLLECTION

- Choose APP

- Click DROPDOWN

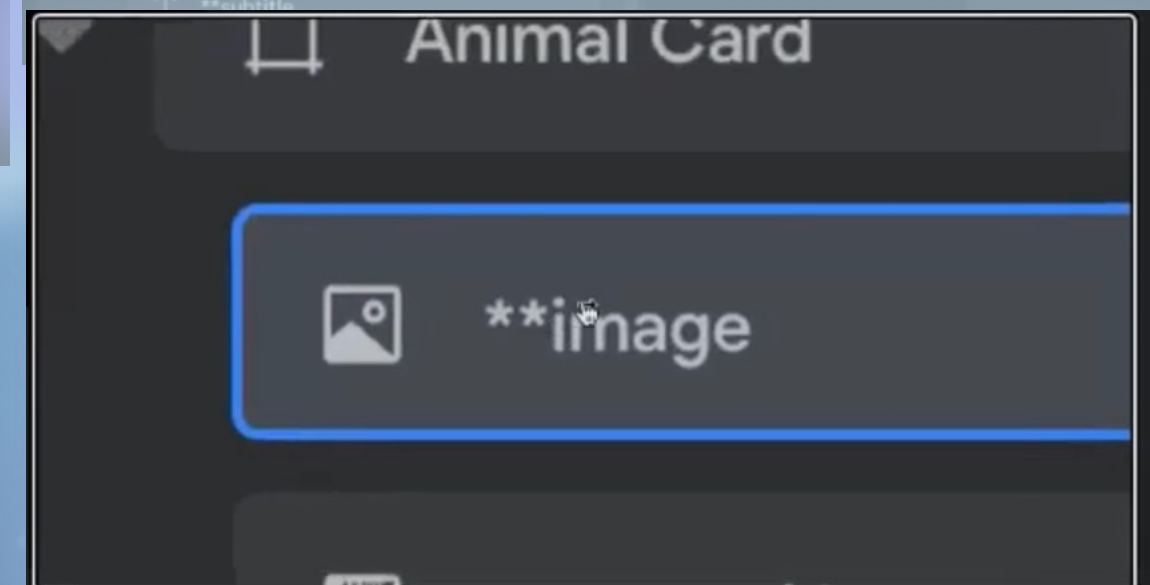
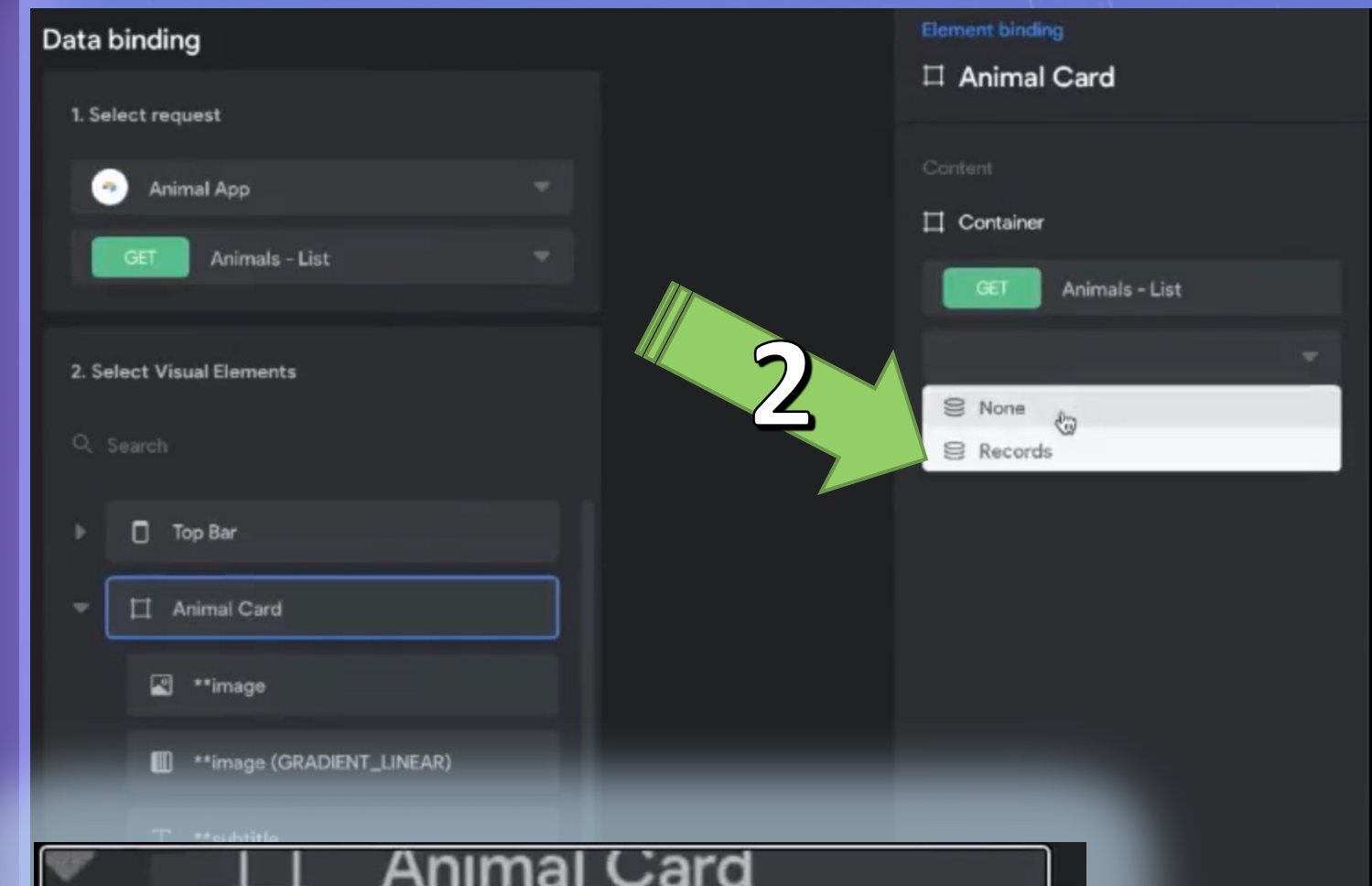
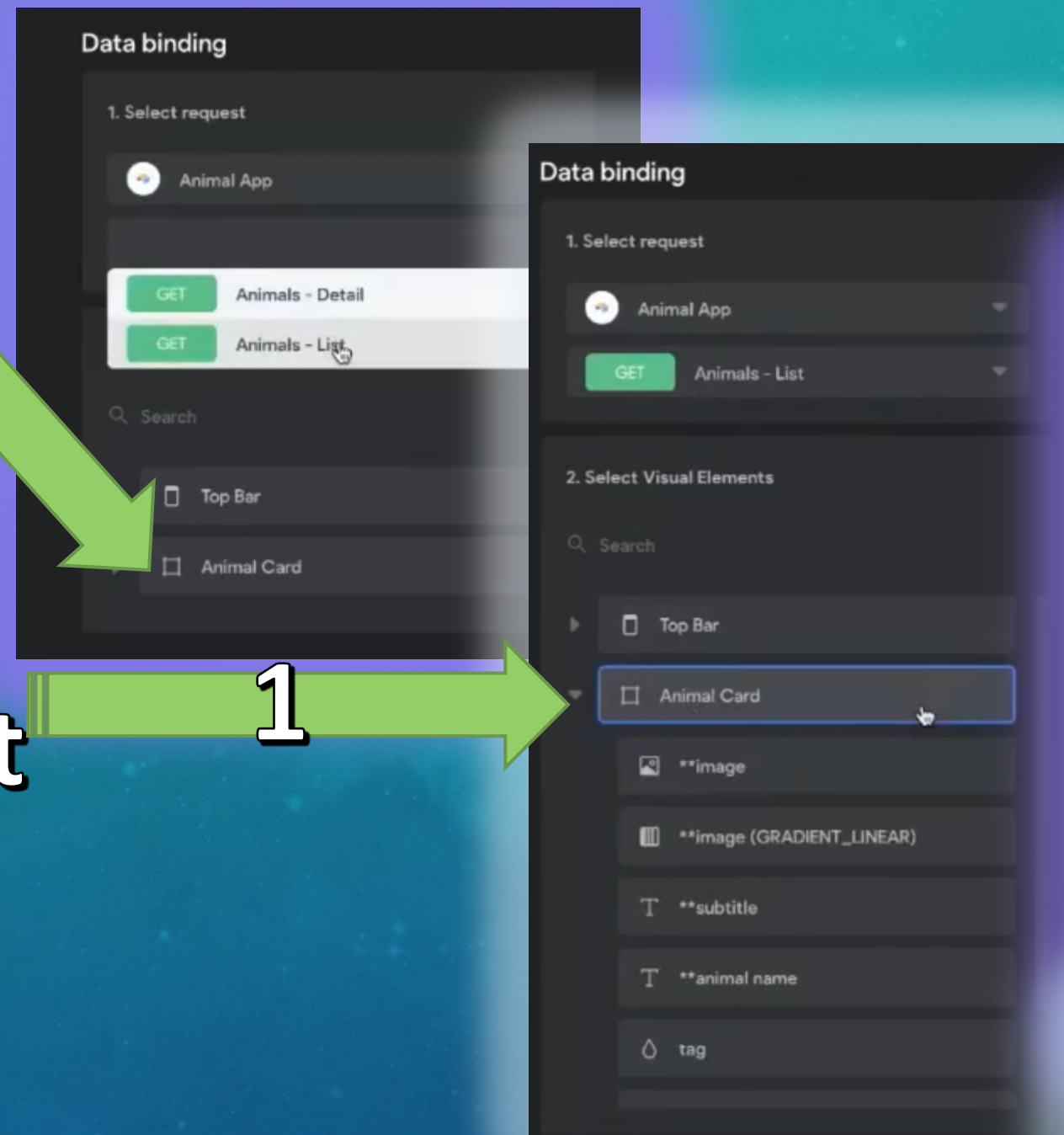
- Choose LIST



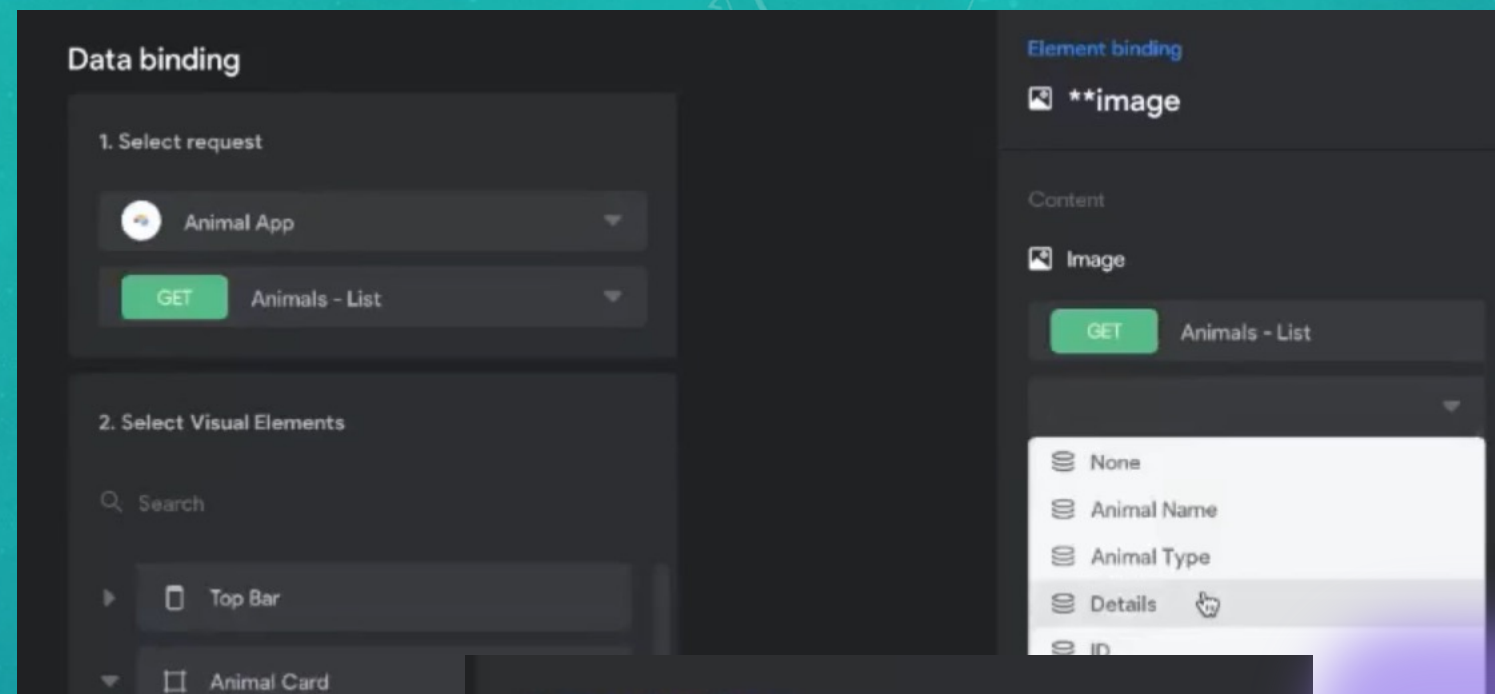
- Use **RECORDS**, so that we're pulling from all of them.

- Choose **CARD**

- Showing screen shot

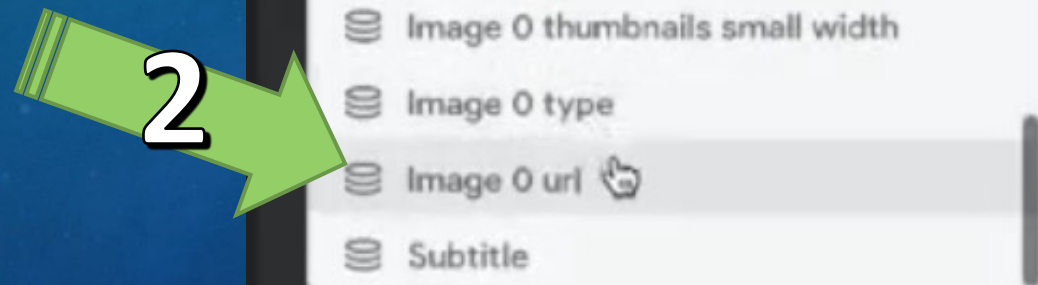


- Make sure ****** are used & showing

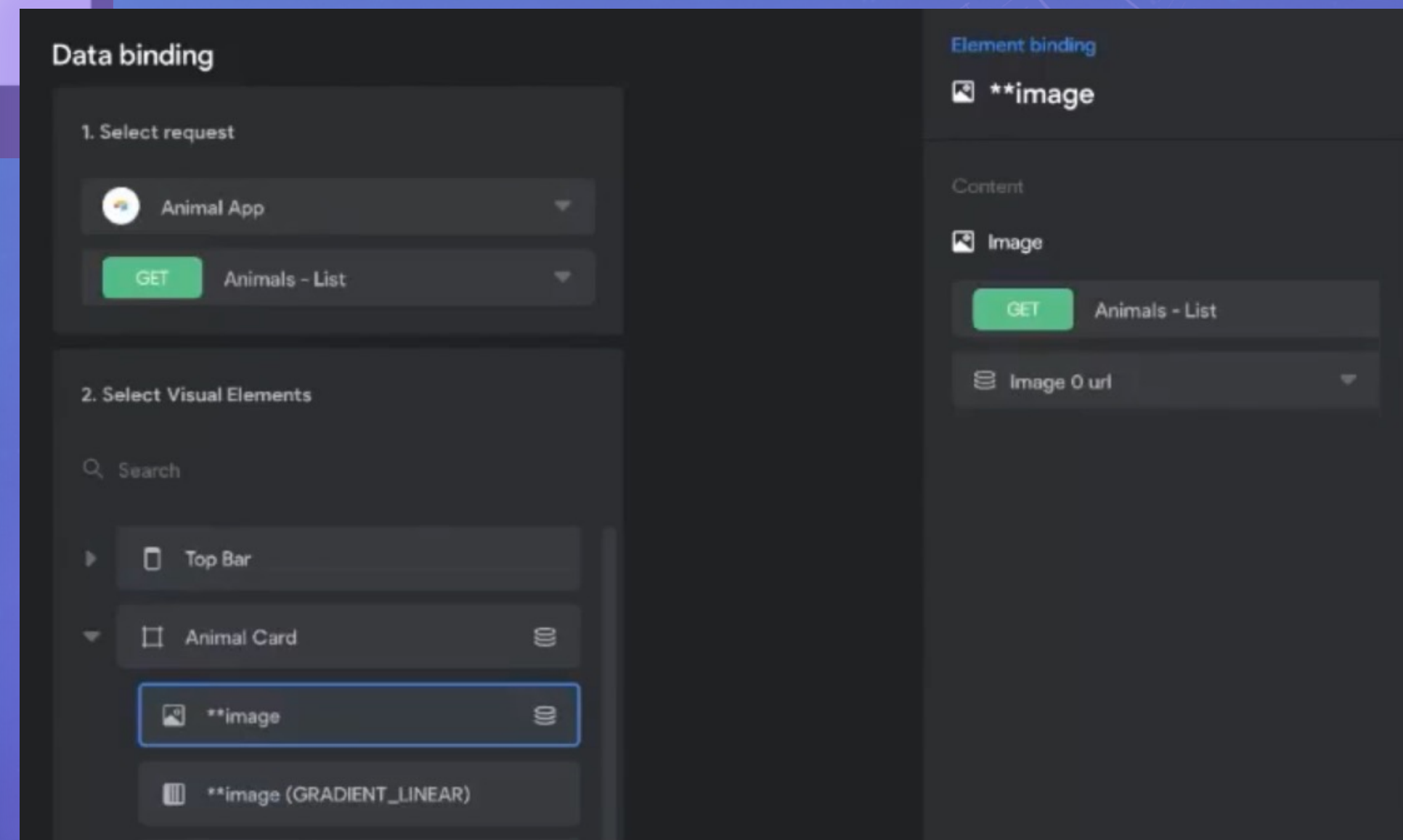


- Choose ****IMAGE**

- Scroll to...



- This screen populates



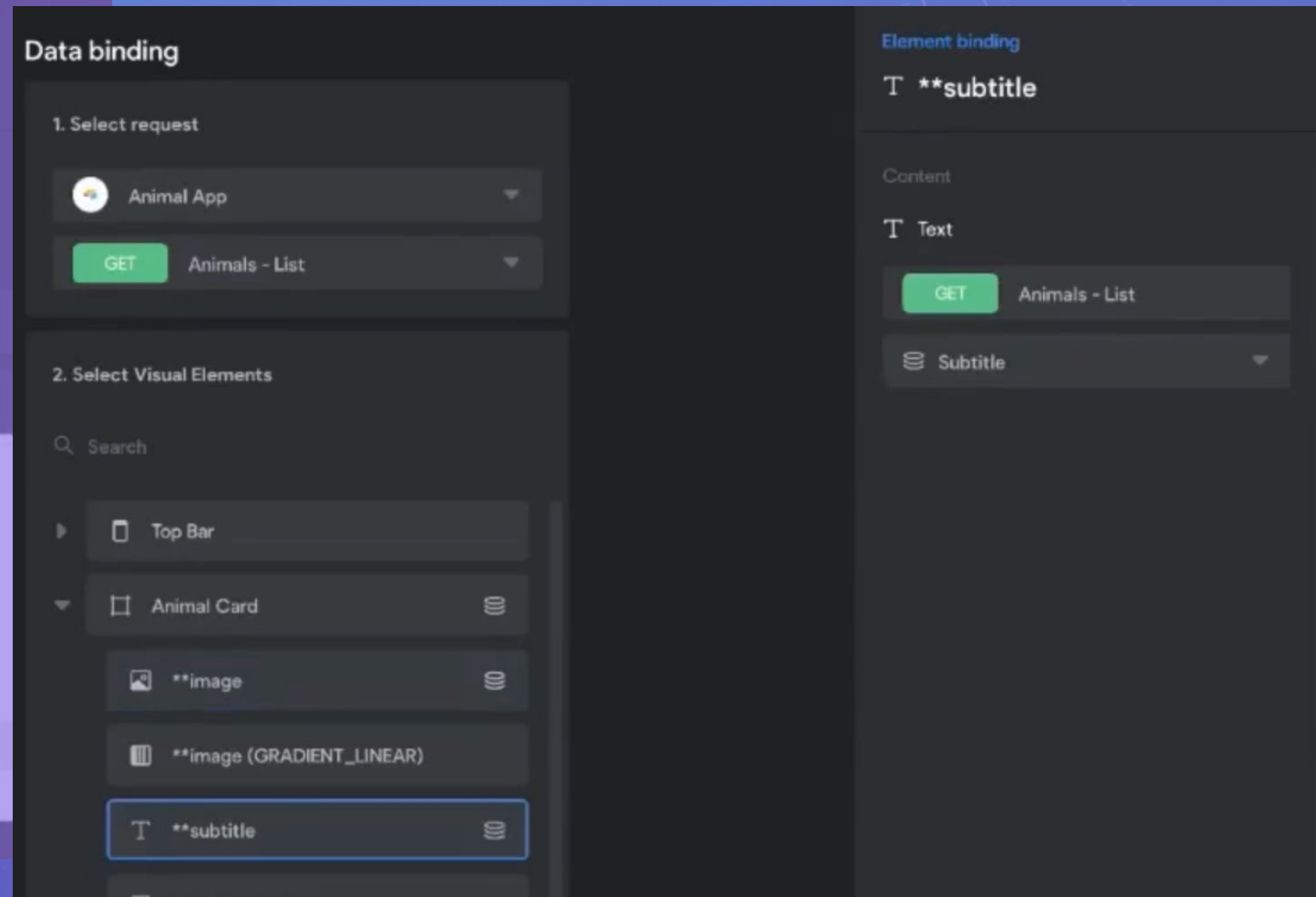
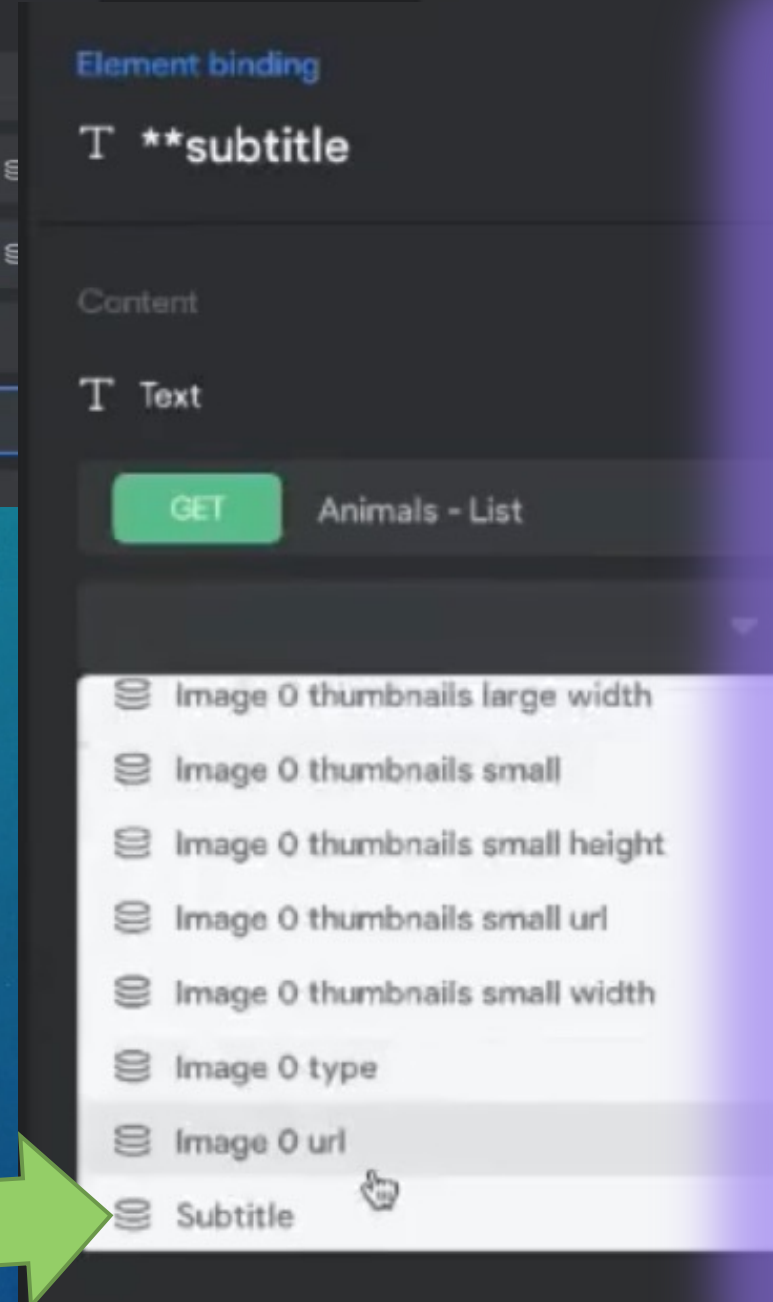
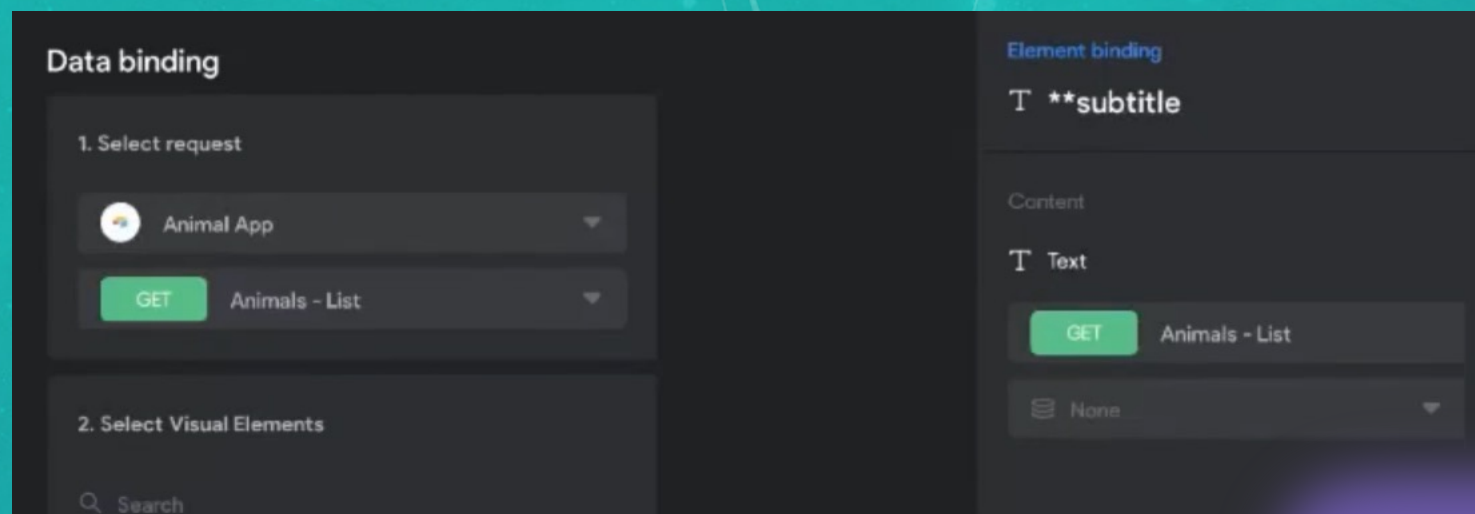
- This screen populates

- Choose
****SUBTITLE**

- Scroll to...

1

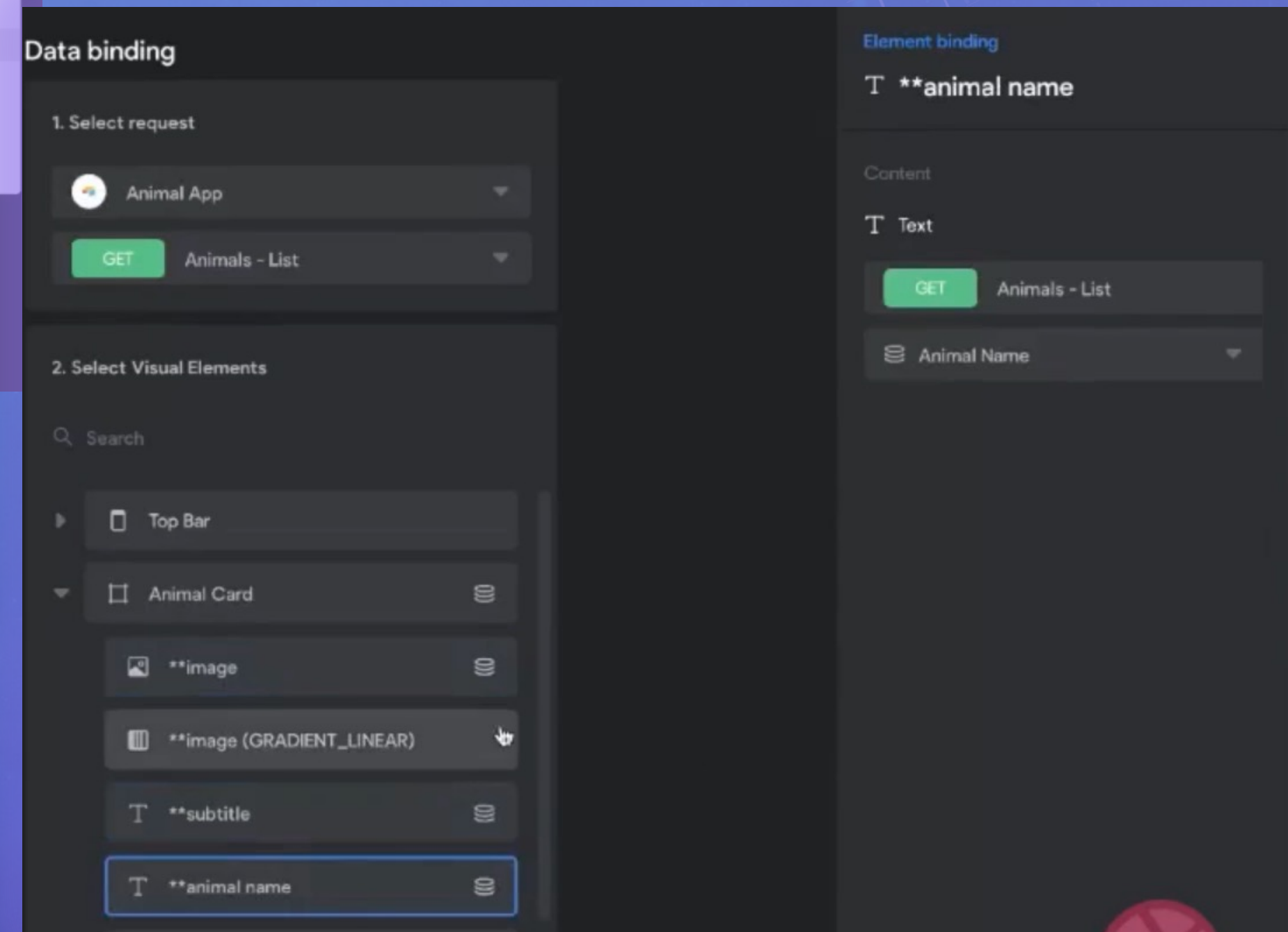
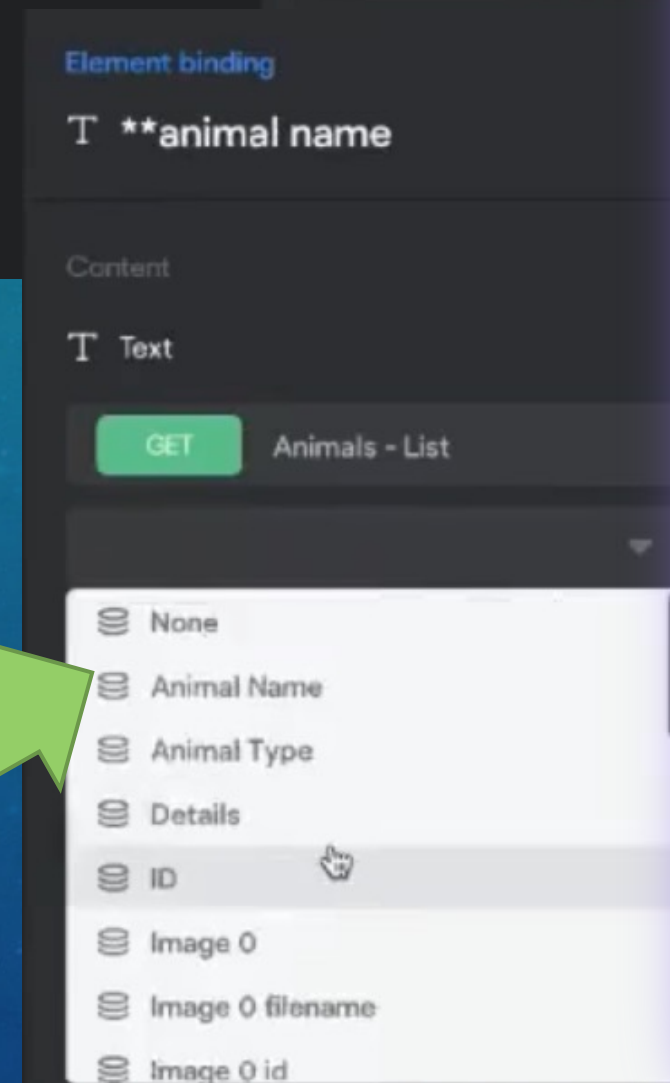
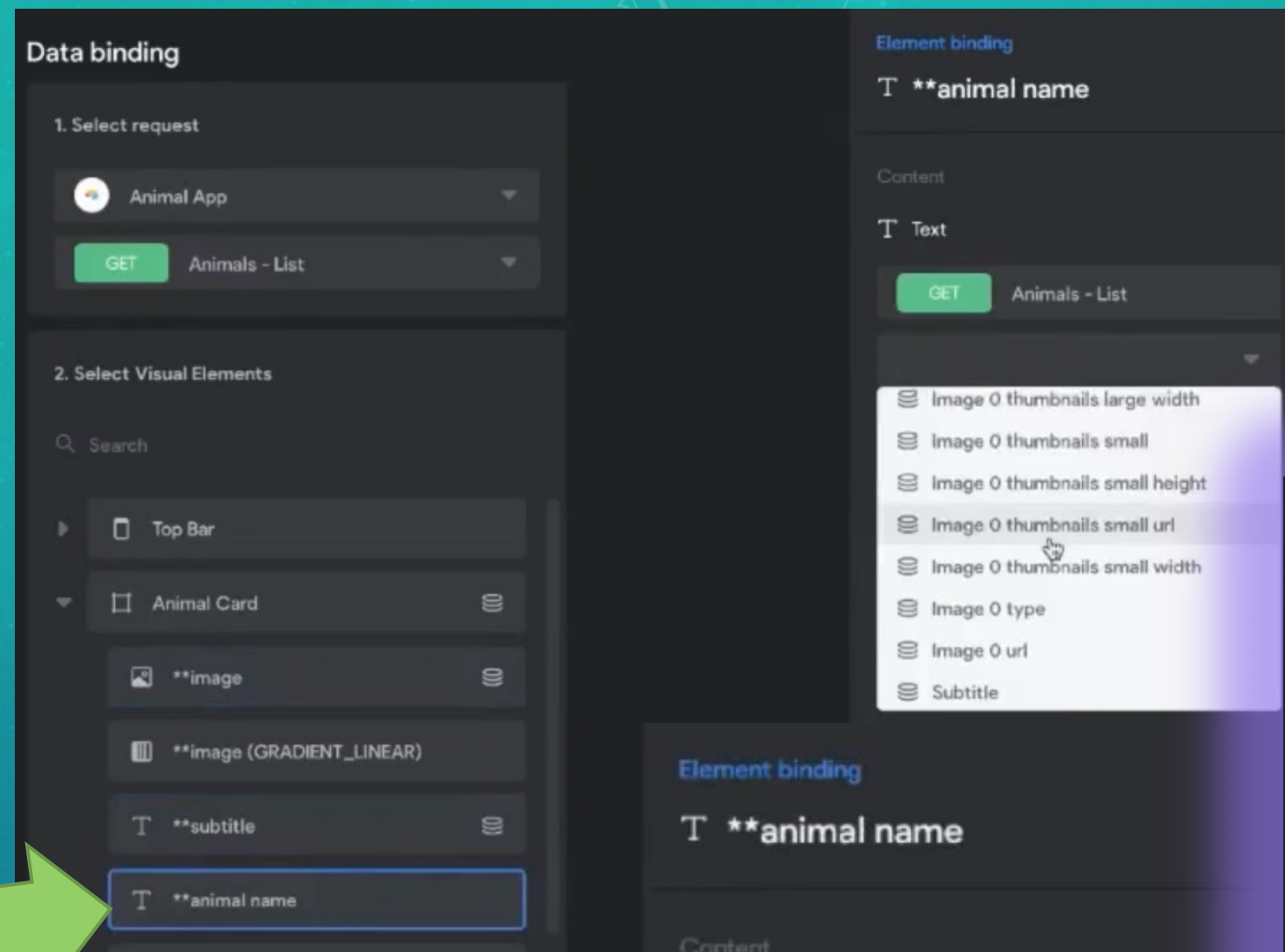
2



- This screen populates

- Choose
****ANIMAL
NAME**

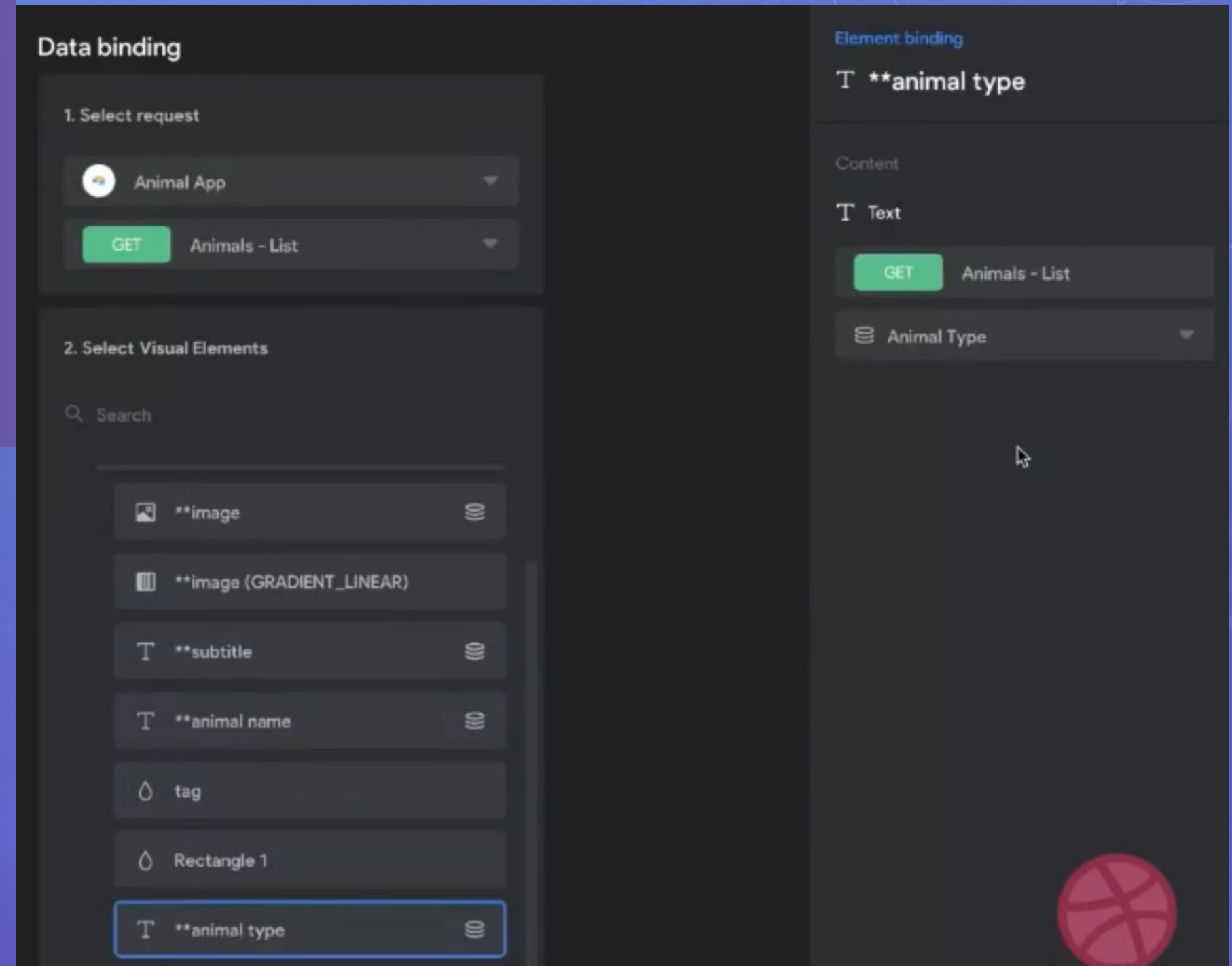
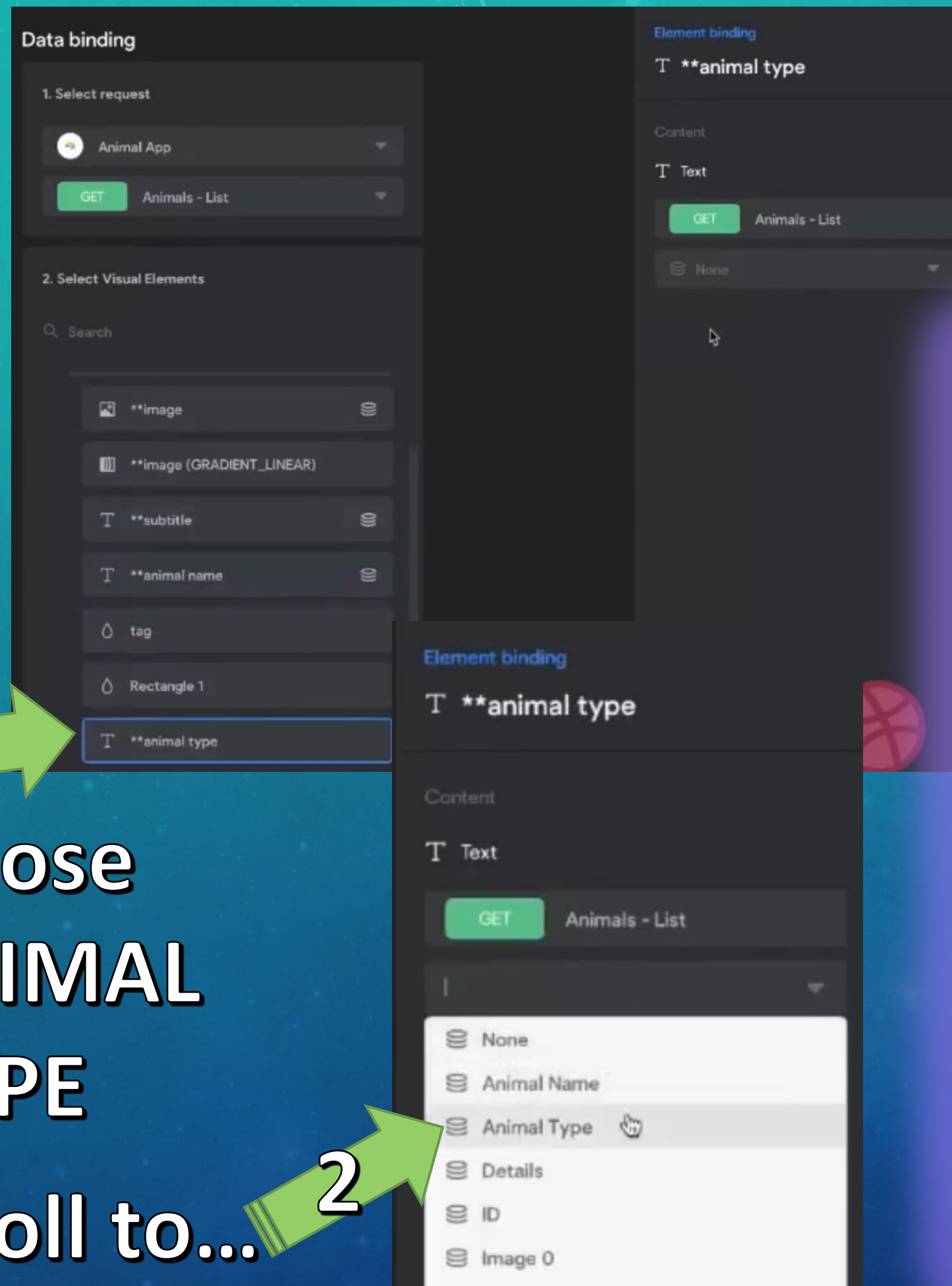
- Scroll to...



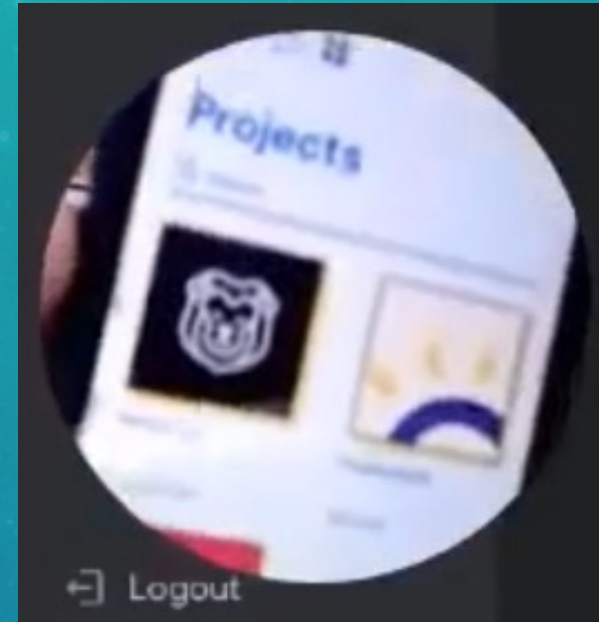
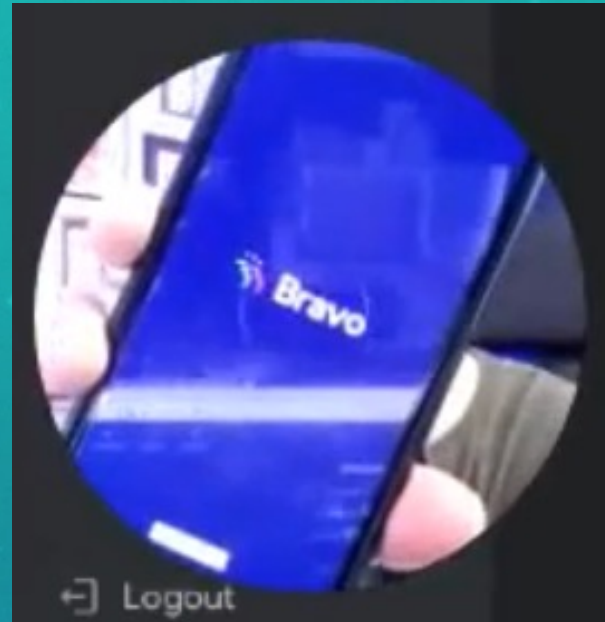
- This screen populates

- Choose
****ANIMAL
TYPE**

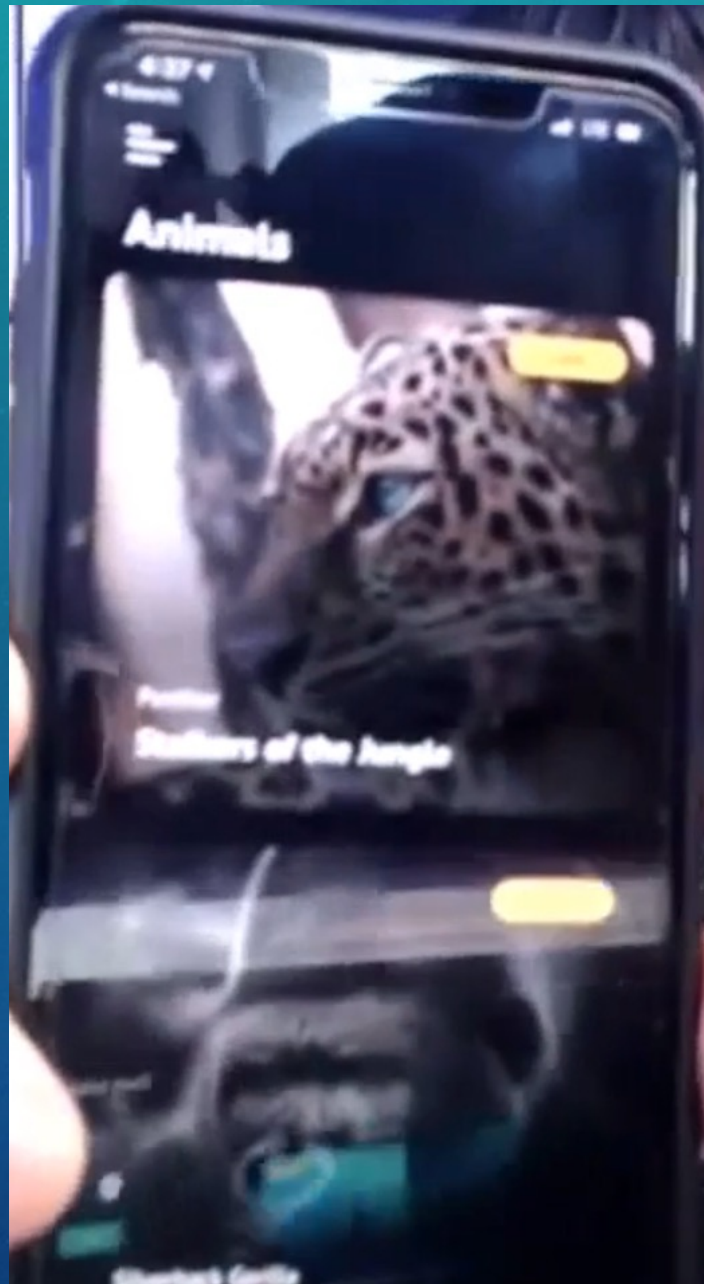
- Scroll to...



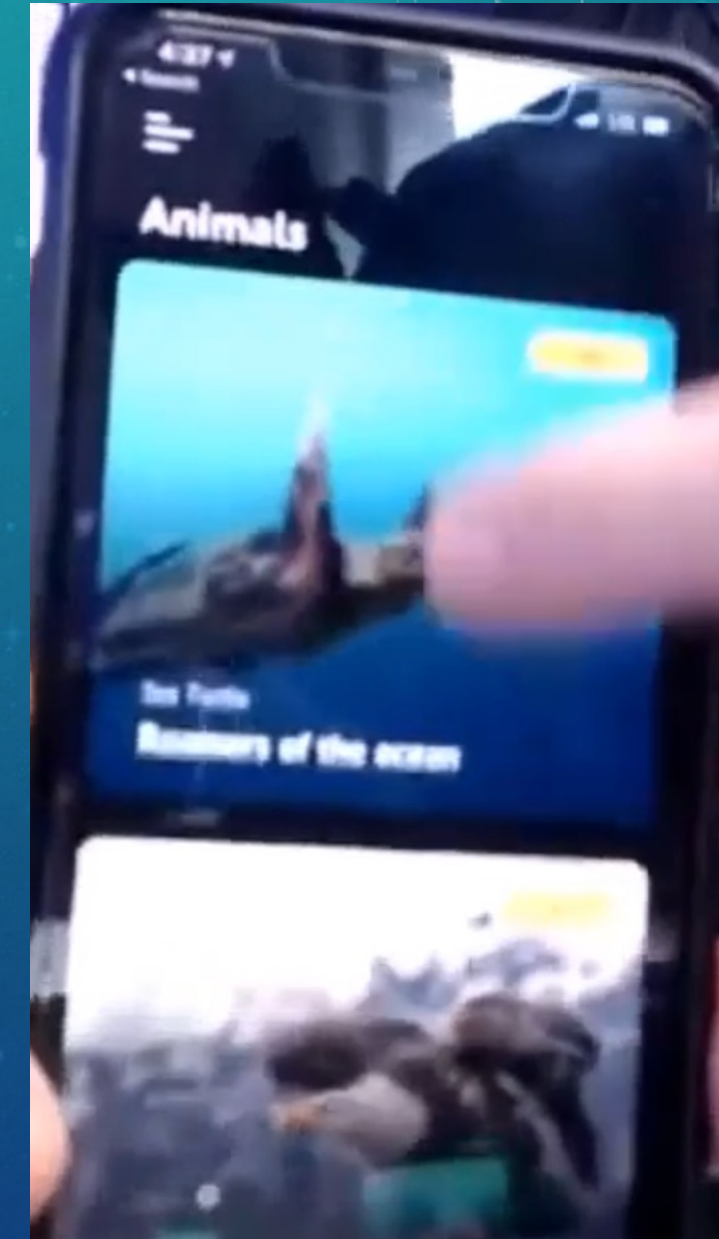
Download APP – Bravo Vision – like Figma Mirror



Click App



Sneak Peek &
can share for
feedback!



- Take REAL data & BIND it to the elements in our design
 - Think Like: Connecting a PLUG into a SOCKET
 - The PLUG = the juice / power / DATA in given API
 - The OUTLET = our design
 - GOAL: Connecting both
- 1st We have to SETUP to bring DATA in. (Build a Library)

THIS IS THE END OF PART 1

