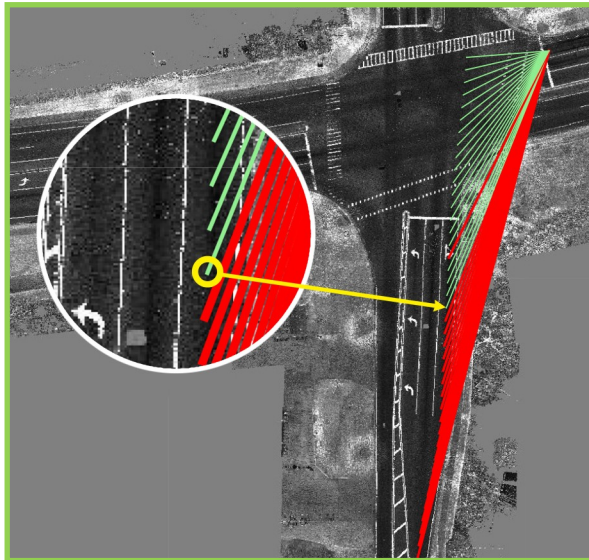


# Howell Branch Rd / Hall Rd and SR 426 (Aloma Ave.) Intersection Road Safety Audit 3D Report

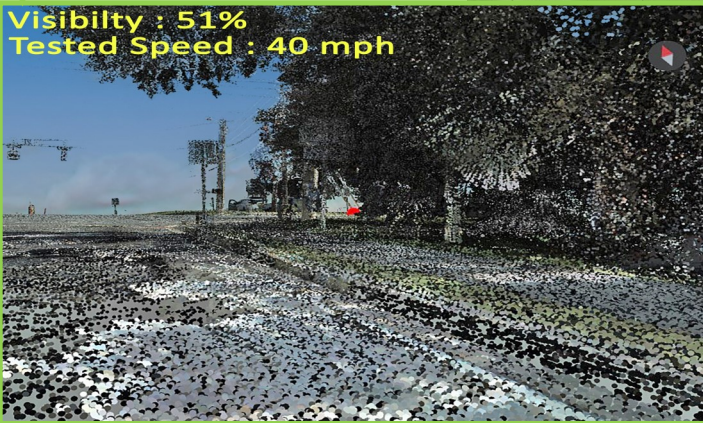
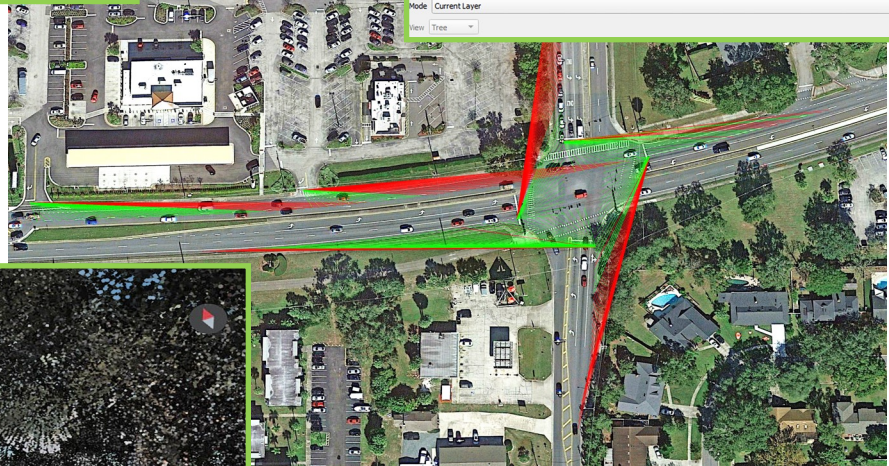
This intersection has known crash issues, and so to expedite the process and potentially identify safety issues a traditional workflow could miss, we worked with Moffat & Nichol and conducted an Intersection Sight Distance (ISD) study. An analysis of existing conditions was conducted for this intersection using available LiDAR data collected by Colliers Engineering.



Each ray provides a table of data such as visibility, target size and distance, speed etc.

Feature	Value
ShapeFile	436A_RL_SN-436-2-RL-P_ISD_P_0_50_100_(1) ShapeFile_436A_RL_SN-436-2-RL-P_ISD_P_0_50_1...
RName	436A
IntID	INTPSN-BR-STOP
LatLonP	[Latitude: 28.6111323718916, Longitude: -81.2784449980243]
Position	[X: 566827.0968933, Y: 566899.9200134]
Target	417.5937
Speed	40
Visibility	51.3157920837402
UriPhoto	<a href="https://devus.123bim.com">https://devus.123bim.com</a>
UriZoo...	<a href="https://www.google.com">https://www.google.com</a>
Classify	N/A
Action	N/A
Case	B
ISD	441
TimeG...	7.5
Dt2int	207.5947
LongSl...	1.33
Minor...	0.6221
CLanes	3
ID	5/17/2022 2:58:05 F
RName	436A
Direct...	Positive
PathCo...	RL
PathID	SN-436-2-RL-P
ConfTy...	ISD
Mileage	0.0398
Cycle	2020
Units	FEET

Rays shot every 10' along each corridor return a visibility percentage based on speed table criteria used.



Shown above is the LiDAR drivers' eye view traveling S to N on Hall Rd. The red ball represents the moment the drivers become visible to each other.

## Analysis Results

- ◆ Right Turn Deficiency
- ◆ Permissive Left Turn Deficiency
- ◆ Stopping Sight Distance Deficiency

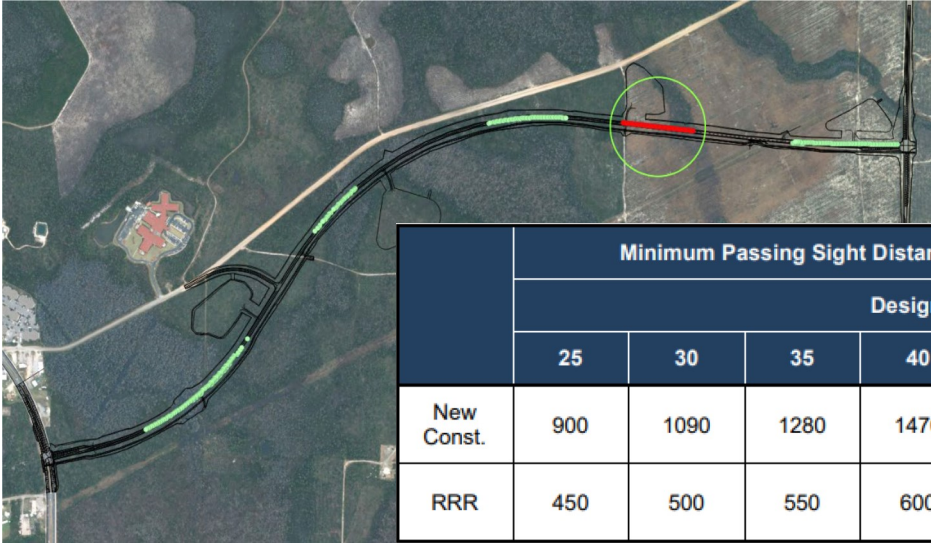
Our systemic approach to the road safety audit process identifies safety deficiencies in the 3D environment of the roadway network and provides insight into potentially hazardous sections of the road. **Our technology provides analysis in just a fraction of the time as compared to conventional methods.**

# SR 370 (Gulf Coast Parkway) Segment 8

## New Alignment Located in Bay County, FL

An initial analysis of this new alignment was run using standard AASHTO tables, but FDOT D3 requested a second analysis using:

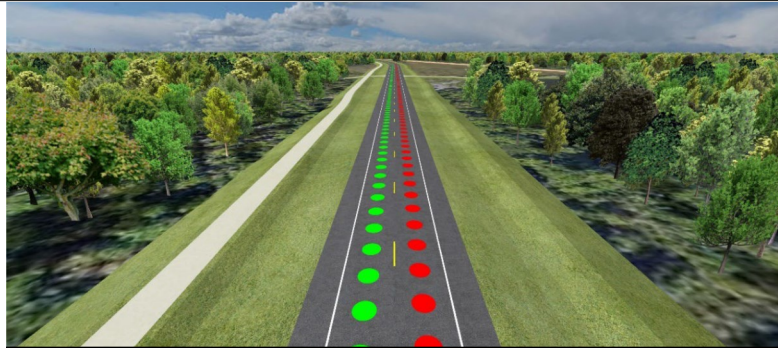
- ⇒ Section 210 major design criteria on arterials and collectors, specifically table 210.11.1 for the Minimum Passing Sight Distance, and table 210.11.2 for the Minimum Passing Sight Distance for new construction.



	Minimum Passing Sight Distance For 2-Lane, 2-Way Roadways (feet)							
	Design Speed (mph)							
	25	30	35	40	45	50	55	60
New Const.	900	1090	1280	1470	1625	1835	1985	2135
RRR	450	500	550	600	700	800	900	1000

### Analysis Results

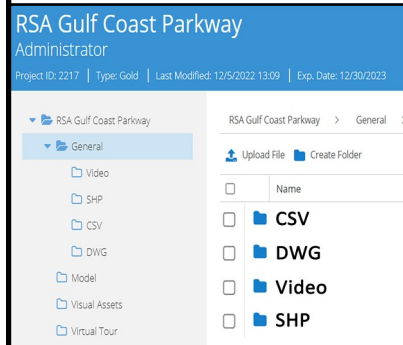
- ◆ One area in the WB direction where the planned passing zone and PSD Analysis returned a ● negative result.
- ◆ Length of conflict area is ~ 673 feet.
- ◆ The analysis found a small invisible area for the ISD in the Star Avenue intersection. The issue is the free right turn from the stop bar position, with the obstacle being the traffic signal mast arm.



- Existing No Pass; Analysis Indicates Passing OK
- Existing Passing; Analysis Indicates No Passing



Scan the QR Code to view the project Virtual Tour



Results were delivered in CSV, DWG, Video and SHP formats, and made available for download from the 123BIM cloud deliverables link.

Let Real Image Solutions help you move the safety needle and save lives down the road.



407-497-8835 | [gary@realimagesolutions.com](mailto:gary@realimagesolutions.com) or visit

<https://realimagesolutions.com/> <http://www.rdvsystems.com/>

