



# Regular Maintenance Can Keep You Running Strong and Prevent Costly Downtime

**And we all know how much management  
likes to see an idle line.**

Even if you're manufacturing in a Class 10 cleanroom, where the operators all wear bunny suits, and particulates (or even deodorant) are not permitted, there are still challenges for your conveyor system. Cleanrooms are extremely arid environments, so components get brittle and break sooner than expected, and motors can wear out more quickly.

And pharmaceutical cleanrooms have a whole different set of guidelines. Some can take up to three days to be re-certified after a breakdown and repairs. That's a LOT of lost time.

Let's face it, though – many of you have much less tidy operations. And that means even more wear and tear on your conveyors. Cardboard dust from packaging; glass, plastic or metal debris from manufacturing; pounding from heavy products; and pressure from products in accumulation areas are just a few of the things that can push your conveyors to their limits.

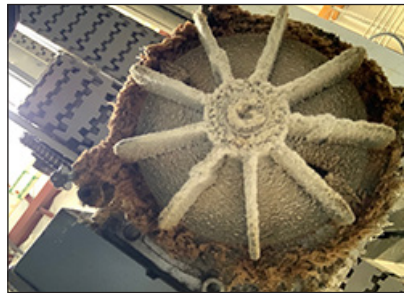
ICSI recommends preventative maintenance service at least 2–6 times per year, depending on your manufacturing environment and the stresses on your conveyors. We provide a full range of maintenance services – scheduled preventative maintenance services, on-site regular service calls, and emergency service calls (for when components fail altogether).

Benefits of having us do your maintenance are:

- A trained set of eyes inspects critical conveyor components at regular intervals, catching problems before they cost you money while you wait for repairs. We have over 40 years' experience and we know what to look for.
- Your chain and slide rail get regular cleanings – a necessity for spotting wear, grinding and splintering. This saves valuable time in detecting weaknesses in the system. After all, when do you have time to do this on your own? And how will your system run if the chain breaks?

- Your conveyor motors will be inspected and cleaned regularly, removing excessive buildup of debris on the motor and fan components, preventing the motor from overheating and breaking down. And we can recommend timely motor replacement, so you won't have to wait weeks/months for a new motor to arrive if one fails.
- The conveyor chain, transmission chain, drive sprockets and slip clutches will all be adjusted to optimal levels and tension, so they work with each other rather than fighting each other and wearing the system out prematurely.
- Conveyor devices, clamps, stops, pushers and elevators are inspected and evaluated, preventing damage to your products or the conveyors.
- You get a follow-up report with observations about potential trouble areas, and a recommended replacement parts list. So small problems can be taken care of before they become big problems and lead to time- and money-consuming repairs.
- You get to schedule conveyor maintenance in synch with your operation – at your convenience, not at the whim of when somethings breaks and MUST be fixed.

### **Don't Let This Be You.**



For more information, or to inquire about scheduling some maintenance, please email us at [info@innovativeconveyor.com](mailto:info@innovativeconveyor.com), or give us a call at 209-384-2235. Or visit us online at [www.innovativeconveyor.com](http://www.innovativeconveyor.com)



Ricardo Servin is President and Technical Supervisor at Innovative Conveyor Systems, Inc. He is known as the "Conveyor Dude" because of his expertise with all kinds of conveyors over 40+ years of experience.