

A CALL TO ACTION

University Administrators



1 COMPLIANCE AND MATH

In updated standards published in recent years, regional and national accreditors emphasize the importance of advanced research methodology, statistical analysis, and informed action based upon proper data manipulation.



2 MULTIPLE-TRAITS

A number of research reports have demonstrated the importance of the interactions among situational and dispositional variables. It is important to go beyond HS GPA, SAT/ACT, Class Rank, recommendations, etc. It is necessary to evaluate multiple psychological traits.



3 MULTIPLE-METHODS

Using succinct internally-developed surveys, web-interviews, QR-coded e-polls, sampling frame investigations, standardized commercial forms, and focus-group collectors, one could aggregate the interactions among situational and dispositional variables.



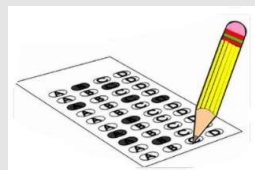
4 SEEING THE BIG PICTURE

A Contextualist-focused, immersive, web-based assessment system can facilitate the development of a multi-trait/multi-method assessment protocol and be used to develop an enduring Success Construct.



5 MAINSTREAM FOCUS

- Pertains to the whole; universal & comprehensive
- Pertains to assessing and evaluating a great number of things or persons, especially in motion
- Pertains to micro-assessments that activate at temporally and situationally specific periods



6 MISSION TEST

By collecting inter-related data from students, faculty, staff, alumni, administrators, and external partners at temporally and situationally sequenced instants, it becomes clear how SLOs, PLOs, and ULOs impact the institutional mission.