

SPSS 26.0 Output file

HBCU PWI ROI DATA SET 4.7.1

C. HAROLD MCMANUS, Ph.D.

PROBE DATA DOCUMENT | CECIL_MCMANUS@PROBECONSULTING.COM



```

GET
FILE='C:\Users\probe\Documents\PROBE MAIN X HP\SUPPORT OUR OFFERINGS\Publications\ACTIVE
PROJECTS\ROI 2020 PROJECT\SPSS FILES\WAVE1\ROI PROJECT PRIVATE.sav'.
DATASET NAME DataSet1 WINDOW=FRONT.
USE ALL.
COMPUTE filter_$=(LEGACY = 1). CHOOSE HBCUs
VARIABLE LABELS filter_$ 'LEGACY = 1 (FILTER)'.
VALUE LABELS filter_$ 0 'Not Selected' 1 'Selected'.
FORMATS filter_$ (f1.0).
FILTER BY filter_$.
EXECUTE.
FREQUENCIES VARIABLES=USRANK SalPotEC SalPotMC AVGGRDSL FAL2FAL SIXYR FOURYR DEF
/STATISTICS=STDDEV RANGE MINIMUM MAXIMUM MEAN MEDIAN MODE
/HISTOGRAM NORMAL
/ORDER=ANALYSIS.

```

HBCU OUTPUT

Frequencies

Notes

Output Created		26-SEP-2020 10:08:55
Comments		
Input	Data	C:\Users\probe\Documents\PROBE MAIN X HP\SUPPORT OUR OFFERINGS\Publications\ACTIVE PROJECTS\ROI 2020 PROJECT\SPSS FILES\WAVE1\ROI PROJECT PRIVATE.sav
	Active Dataset	DataSet1
	Filter	LEGACY = 1 (FILTER)
	Weight	<none>
	Split File	<none>
	N of Rows in Working Data File	38
Missing Value Handling	Definition of Missing	User-defined missing values are treated as missing.
	Cases Used	Statistics are based on all cases with valid data.

Syntax

```
FREQUENCIES  
VARIABLES=USRANK  
SaIPotEC SaIPotMC  
AVGGRDSL FAL2FAL  
SIXYR FOURYR DEF  
  /STATISTICS=STDDEV  
RANGE MINIMUM  
MAXIMUM MEAN MEDIAN  
MODE  
  /HISTOGRAM NORMAL  
  /ORDER=ANALYSIS.
```

Resources

Processor Time

00:00:02.41

Elapsed Time

00:00:01.16

Statistics

		US News and World Report Ranking	Salary Potential Early Career	Salary Potential Mid Career	Average salary of graduating seniors	Fall to fall retention percentage rate
N	Valid	38	38	38	37	38
	Missing	0	0	0	1	0
Mean		99.79	42578.95	107515.79	56702.70	63.55
Median		71.00	40450.00	71350.00	57000.00	65.50
Mode		189	35600	62400 ^a	52000 ^a	50 ^a
Std. Deviation		71.654	8800.988	138323.912	10519.466	14.082
Range		219	41700	676000	47000	61
Minimum		3	31400	50000	36000	37
Maximum		222	73100	726000	83000	98

Statistics

		Six year graduation percentage rate	Four year graduation percentage rate	Three year default rate percentage for student loans
N	Valid	38	38	38
	Missing	0	0	0
Mean		36.42	24.34	16.034
Median		33.50	20.50	16.000
Mode		24	16 ^a	11.0
Std. Deviation		17.259	17.298	6.6703
Range		86	85	27.0
Minimum		10	2	2.0
Maximum		96	87	29.0

a. Multiple modes exist. The smallest value is shown

Frequency Table

US News and World Report Ranking

		Frequency	Percent	Valid Percent	Cumulative Percent
Valid	3	1	2.6	2.6	2.6
	9	1	2.6	2.6	5.3
	17	1	2.6	2.6	7.9
	25	1	2.6	2.6	10.5
	26	1	2.6	2.6	13.2
	29	2	5.3	5.3	18.4
	31	2	5.3	5.3	23.7
	41	1	2.6	2.6	26.3
	46	1	2.6	2.6	28.9
	55	3	7.9	7.9	36.8
	57	1	2.6	2.6	39.5
	62	1	2.6	2.6	42.1
	71	5	13.2	13.2	55.3
	74	1	2.6	2.6	57.9
	75	1	2.6	2.6	60.5
	80	1	2.6	2.6	63.2
	154	1	2.6	2.6	65.8
	181	5	13.2	13.2	78.9
	189	6	15.8	15.8	94.7
	222	2	5.3	5.3	100.0
Total		38	100.0	100.0	

Salary Potential Early Career

		Frequency	Percent	Valid Percent	Cumulative Percent	
Valid	31400	1	2.6	2.6	2.6	
	31500	1	2.6	2.6	5.3	
	34600	2	5.3	5.3	10.5	
	34800	2	5.3	5.3	15.8	
	35000	1	2.6	2.6	18.4	
	35600	3	7.9	7.9	26.3	
	36100	1	2.6	2.6	28.9	
	36300	1	2.6	2.6	31.6	
	37000	1	2.6	2.6	34.2	
	38000	1	2.6	2.6	36.8	
	38100	1	2.6	2.6	39.5	
	38300	1	2.6	2.6	42.1	
	38400	1	2.6	2.6	44.7	
	38700	1	2.6	2.6	47.4	
	39500	1	2.6	2.6	50.0	
	41400	1	2.6	2.6	52.6	
	41600	1	2.6	2.6	55.3	
	42100	1	2.6	2.6	57.9	
	42400	1	2.6	2.6	60.5	
	43300	1	2.6	2.6	63.2	
	43500	1	2.6	2.6	65.8	
	44100	1	2.6	2.6	68.4	
	44300	1	2.6	2.6	71.1	
	45700	1	2.6	2.6	73.7	
	47500	1	2.6	2.6	76.3	
	48000	1	2.6	2.6	78.9	
	49500	1	2.6	2.6	81.6	
	50300	1	2.6	2.6	84.2	
	54400	1	2.6	2.6	86.8	
	54500	1	2.6	2.6	89.5	
	54800	1	2.6	2.6	92.1	
	55200	1	2.6	2.6	94.7	
	58400	1	2.6	2.6	97.4	
	73100	1	2.6	2.6	100.0	
	Total		38	100.0	100.0	

Salary Potential Mid Career

		Frequency	Percent	Valid Percent	Cumulative Percent	
Valid	50000	1	2.6	2.6	2.6	
	56400	1	2.6	2.6	5.3	
	56900	1	2.6	2.6	7.9	
	61200	1	2.6	2.6	10.5	
	62100	1	2.6	2.6	13.2	
	62400	2	5.3	5.3	18.4	
	63000	1	2.6	2.6	21.1	
	64100	2	5.3	5.3	26.3	
	64900	1	2.6	2.6	28.9	
	65100	1	2.6	2.6	31.6	
	65500	1	2.6	2.6	34.2	
	67500	2	5.3	5.3	39.5	
	69100	1	2.6	2.6	42.1	
	70300	1	2.6	2.6	44.7	
	70500	1	2.6	2.6	47.4	
	71000	1	2.6	2.6	50.0	
	71700	1	2.6	2.6	52.6	
	72900	1	2.6	2.6	55.3	
	73200	1	2.6	2.6	57.9	
	73600	1	2.6	2.6	60.5	
	77400	1	2.6	2.6	63.2	
	78800	1	2.6	2.6	65.8	
	81800	2	5.3	5.3	71.1	
	83300	1	2.6	2.6	73.7	
	87300	1	2.6	2.6	76.3	
	91000	1	2.6	2.6	78.9	
	93500	1	2.6	2.6	81.6	
	96800	1	2.6	2.6	84.2	
	99200	1	2.6	2.6	86.8	
	101300	1	2.6	2.6	89.5	
	108400	1	2.6	2.6	92.1	
	138600	1	2.6	2.6	94.7	
	635000	1	2.6	2.6	97.4	
	726000	1	2.6	2.6	100.0	
	Total		38	100.0	100.0	

Average salary of graduating seniors

		Frequency	Percent	Valid Percent	Cumulative Percent
Valid	36000	1	2.6	2.7	2.7
	41000	1	2.6	2.7	5.4
	42000	1	2.6	2.7	8.1
	45000	2	5.3	5.4	13.5
	46000	1	2.6	2.7	16.2
	49000	3	7.9	8.1	24.3
	50000	2	5.3	5.4	29.7
	51000	1	2.6	2.7	32.4
	52000	4	10.5	10.8	43.2
	53000	1	2.6	2.7	45.9
	56000	1	2.6	2.7	48.6
	57000	4	10.5	10.8	59.5
	58000	1	2.6	2.7	62.2
	59000	1	2.6	2.7	64.9
	61000	3	7.9	8.1	73.0
	62000	1	2.6	2.7	75.7
	63000	2	5.3	5.4	81.1
	64000	1	2.6	2.7	83.8
	68000	1	2.6	2.7	86.5
	71000	1	2.6	2.7	89.2
73000	1	2.6	2.7	91.9	
75000	1	2.6	2.7	94.6	
78000	1	2.6	2.7	97.3	
83000	1	2.6	2.7	100.0	
	Total	37	97.4	100.0	
Missing	0	1	2.6		
Total		38	100.0		

Fall to fall retention percentage rate

		Frequency	Percent	Valid Percent	Cumulative Percent
Valid	37	1	2.6	2.6	2.6
	39	2	5.3	5.3	7.9
	45	1	2.6	2.6	10.5
	47	1	2.6	2.6	13.2
	49	1	2.6	2.6	15.8
	50	3	7.9	7.9	23.7
	54	2	5.3	5.3	28.9
	55	1	2.6	2.6	31.6
	57	3	7.9	7.9	39.5
	62	1	2.6	2.6	42.1
	64	1	2.6	2.6	44.7
	65	2	5.3	5.3	50.0
	66	1	2.6	2.6	52.6
	68	2	5.3	5.3	57.9
	69	3	7.9	7.9	65.8
	70	3	7.9	7.9	73.7
	71	1	2.6	2.6	76.3
	74	2	5.3	5.3	81.6
	75	2	5.3	5.3	86.8
	76	1	2.6	2.6	89.5
81	1	2.6	2.6	92.1	
85	1	2.6	2.6	94.7	
91	1	2.6	2.6	97.4	
98	1	2.6	2.6	100.0	
Total		38	100.0	100.0	

Six year graduation percentage rate

		Frequency	Percent	Valid Percent	Cumulative Percent
Valid	10	1	2.6	2.6	2.6
	12	1	2.6	2.6	5.3
	15	1	2.6	2.6	7.9
	18	2	5.3	5.3	13.2
	20	1	2.6	2.6	15.8
	23	1	2.6	2.6	18.4
	24	4	10.5	10.5	28.9
	27	1	2.6	2.6	31.6
	29	2	5.3	5.3	36.8
	31	3	7.9	7.9	44.7
	33	2	5.3	5.3	50.0
	34	1	2.6	2.6	52.6
	35	1	2.6	2.6	55.3
	36	2	5.3	5.3	60.5
	38	1	2.6	2.6	63.2
	41	1	2.6	2.6	65.8
	42	2	5.3	5.3	71.1
	43	1	2.6	2.6	73.7
	44	1	2.6	2.6	76.3
	45	1	2.6	2.6	78.9
48	1	2.6	2.6	81.6	
49	1	2.6	2.6	84.2	
50	1	2.6	2.6	86.8	
54	1	2.6	2.6	89.5	
58	1	2.6	2.6	92.1	
62	1	2.6	2.6	94.7	
75	1	2.6	2.6	97.4	
96	1	2.6	2.6	100.0	
Total		38	100.0	100.0	

Four year graduation percentage rate

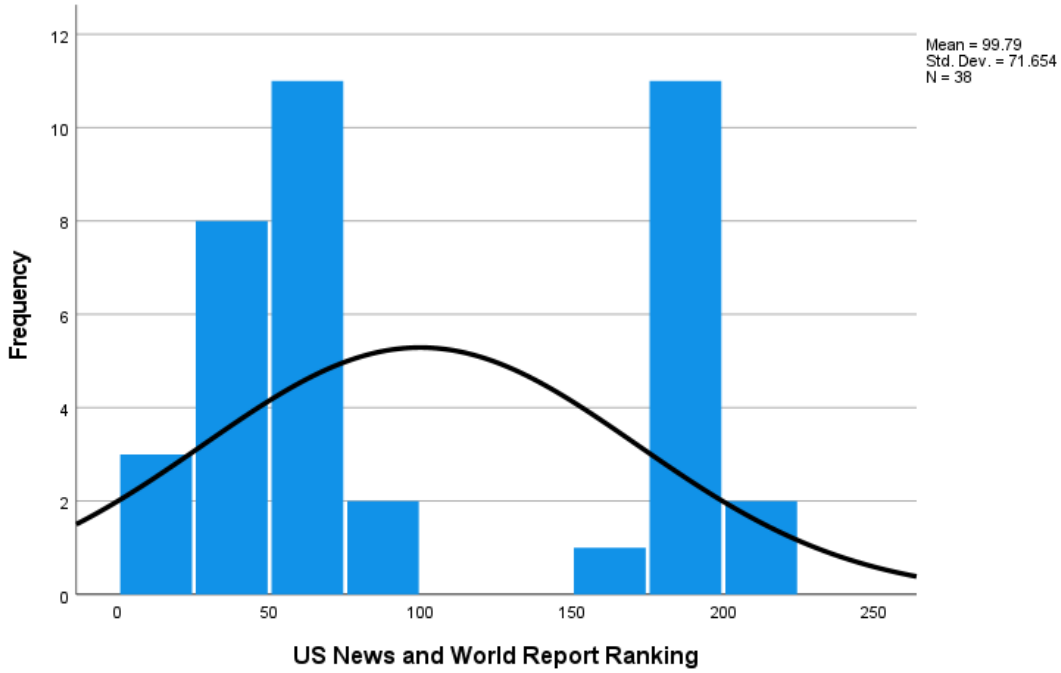
		Frequency	Percent	Valid Percent	Cumulative Percent
Valid	2	1	2.6	2.6	2.6
	3	1	2.6	2.6	5.3
	6	1	2.6	2.6	7.9
	7	1	2.6	2.6	10.5
	9	1	2.6	2.6	13.2
	10	2	5.3	5.3	18.4
	11	1	2.6	2.6	21.1
	13	1	2.6	2.6	23.7
	14	2	5.3	5.3	28.9
	15	1	2.6	2.6	31.6
	16	3	7.9	7.9	39.5
	17	2	5.3	5.3	44.7
	19	1	2.6	2.6	47.4
	20	1	2.6	2.6	50.0
	21	3	7.9	7.9	57.9
	22	1	2.6	2.6	60.5
	24	1	2.6	2.6	63.2
	25	1	2.6	2.6	65.8
	27	1	2.6	2.6	68.4
	28	1	2.6	2.6	71.1
	31	1	2.6	2.6	73.7
	34	1	2.6	2.6	76.3
	36	1	2.6	2.6	78.9
	37	2	5.3	5.3	84.2
	40	1	2.6	2.6	86.8
	42	1	2.6	2.6	89.5
43	1	2.6	2.6	92.1	
46	1	2.6	2.6	94.7	
68	1	2.6	2.6	97.4	
87	1	2.6	2.6	100.0	
Total		38	100.0	100.0	

Three year default rate percentage for student loans

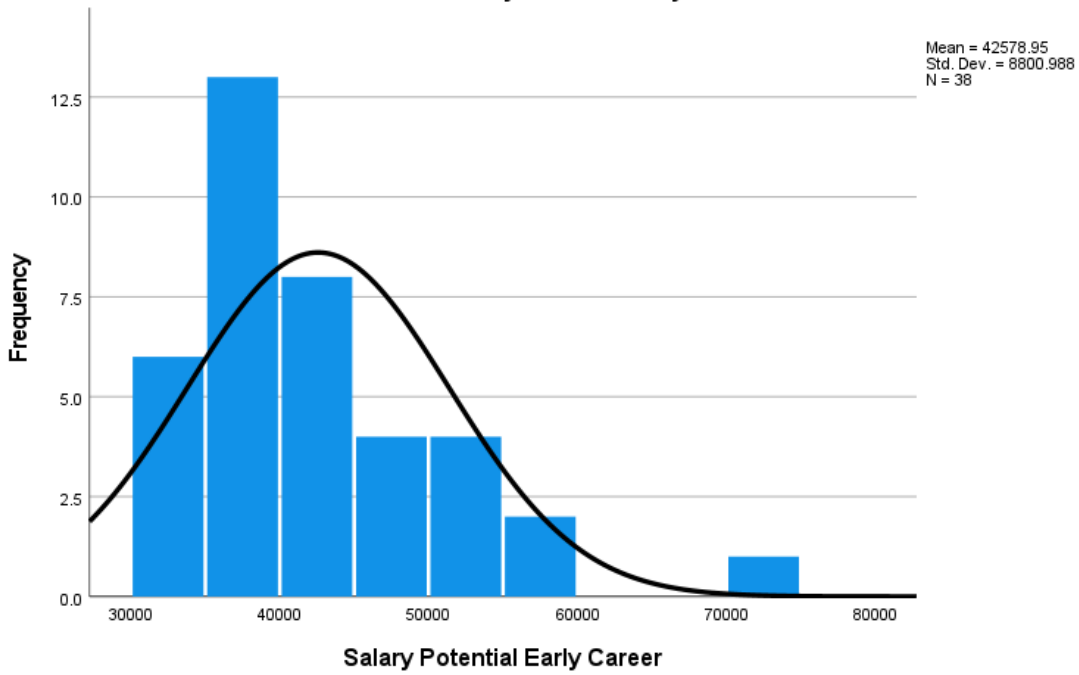
		Frequency	Percent	Valid Percent	Cumulative Percent
Valid	2.0	1	2.6	2.6	2.6
	5.0	1	2.6	2.6	5.3
	8.0	2	5.3	5.3	10.5
	9.0	2	5.3	5.3	15.8
	10.0	3	7.9	7.9	23.7
	11.0	5	13.2	13.2	36.8
	13.0	2	5.3	5.3	42.1
	14.0	2	5.3	5.3	47.4
	16.0	2	5.3	5.3	52.6
	17.0	2	5.3	5.3	57.9
	18.3	1	2.6	2.6	60.5
	19.0	2	5.3	5.3	65.8
	21.0	2	5.3	5.3	71.1
	22.0	3	7.9	7.9	78.9
	23.0	2	5.3	5.3	84.2
	24.0	3	7.9	7.9	92.1
	25.0	1	2.6	2.6	94.7
	27.0	1	2.6	2.6	97.4
	29.0	1	2.6	2.6	100.0
Total		38	100.0	100.0	

Histogram

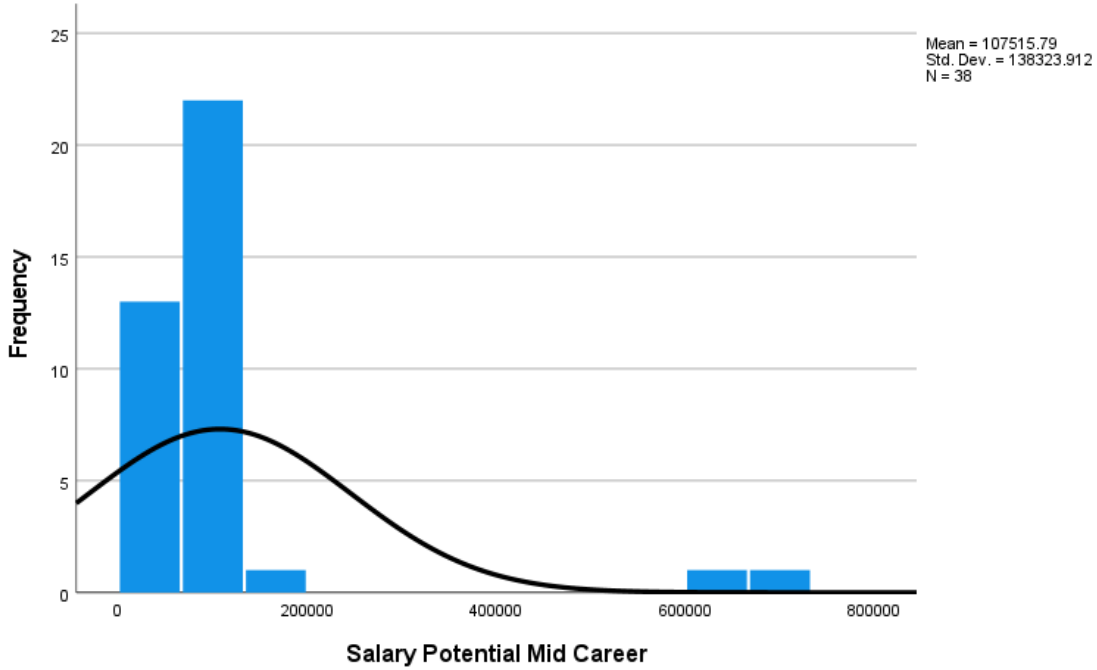
US News and World Report Ranking



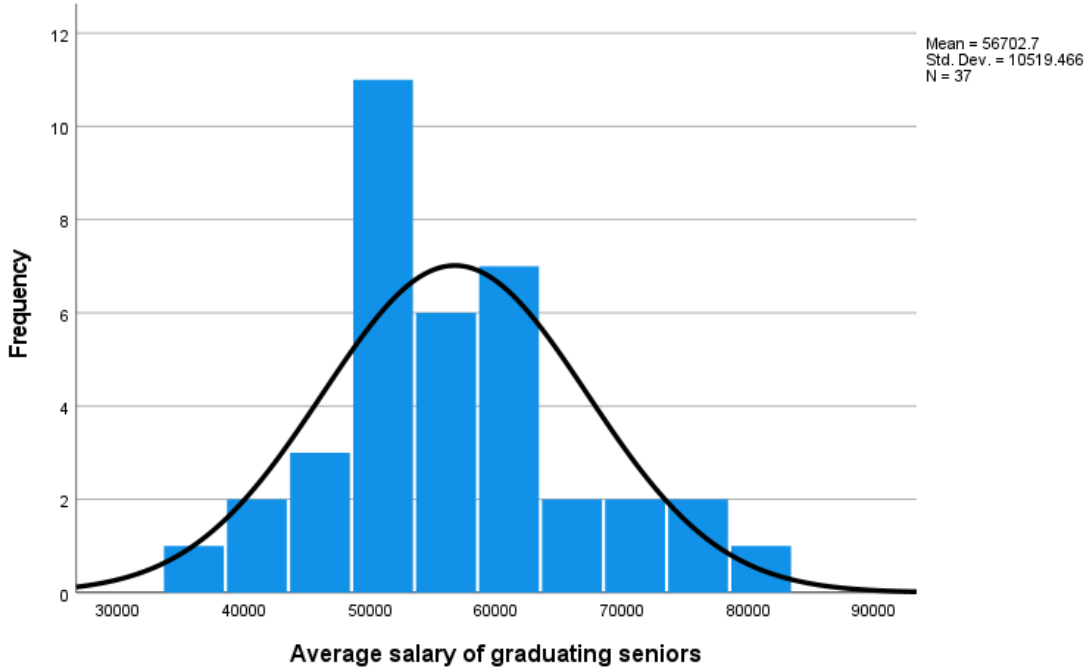
Salary Potential Early Career

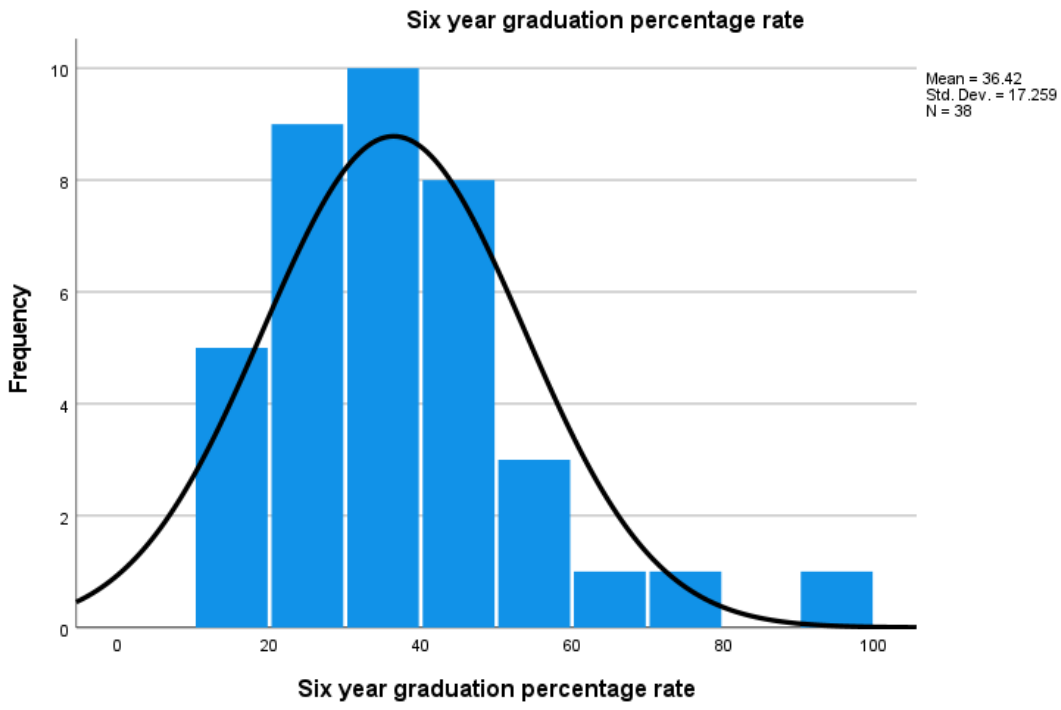
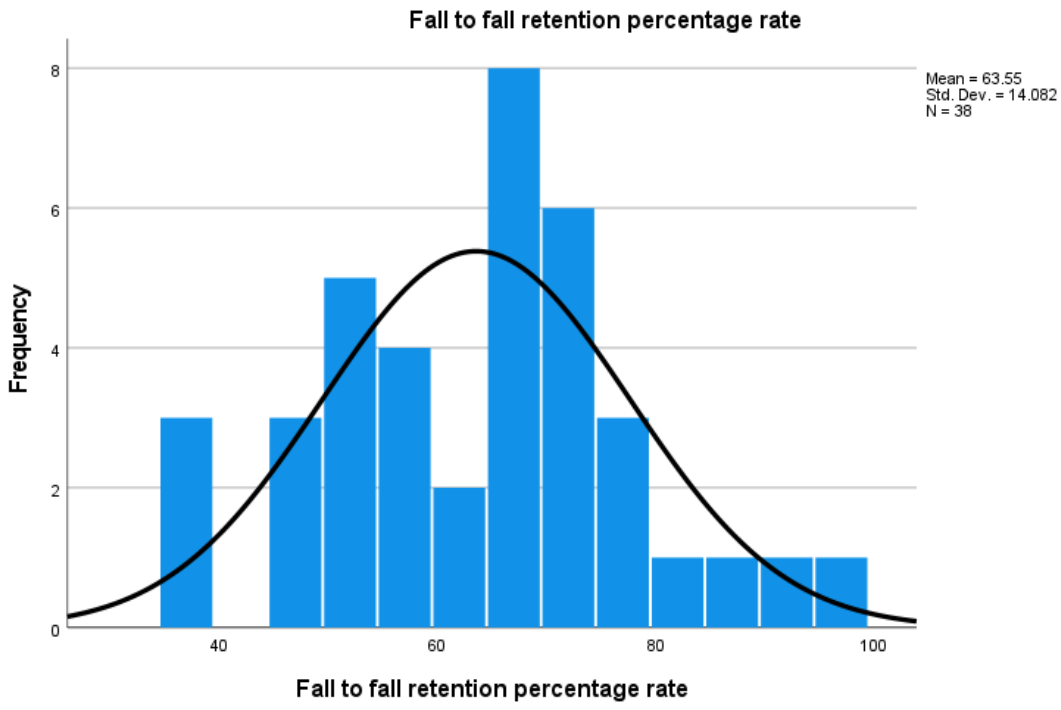


Salary Potential Mid Career

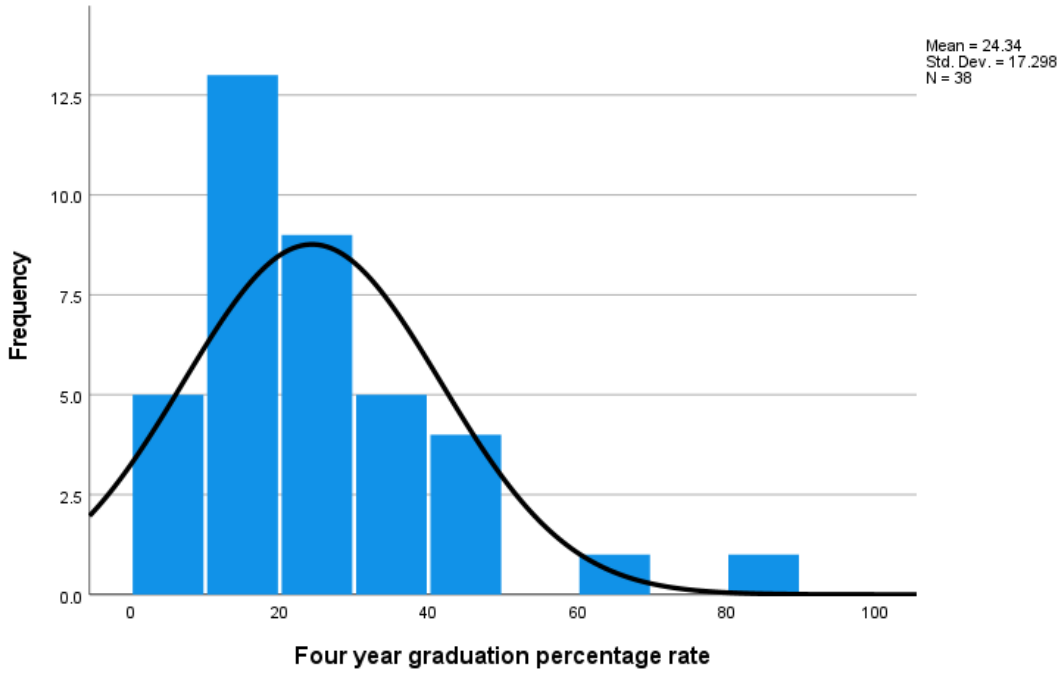


Average salary of graduating seniors

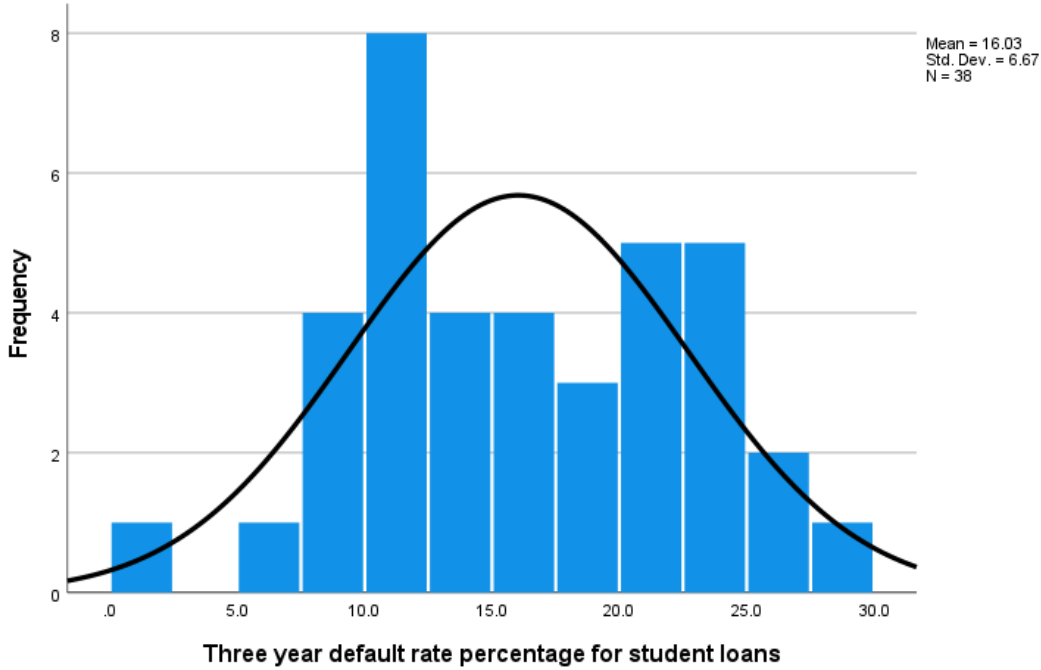




Four year graduation percentage rate



Three year default rate percentage for student loans



USE ALL.

COMPUTE filter_\$=(LEGACY = 2).Choose PWIs here

VARIABLE LABELS filter_\$ 'LEGACY = 2 (FILTER)'.
VALUE LABELS filter_\$ 0 'Not Selected' 1 'Selected'.
FORMATS filter_\$ (f1.0).
FILTER BY filter_\$.
EXECUTE.

FREQUENCIES VARIABLES=USRANK SalPotEC SalPotMC AVGGDLSL FAL2FAL SIXYR FOURYR DEF
/STATISTICS=STDDEV RANGE MINIMUM MAXIMUM MEAN MEDIAN MODE
/HISTOGRAM NORMAL
/ORDER=ANALYSIS.

PWI Output

Frequencies

Notes

Output Created		26-SEP-2020 10:09:50
Comments		
Input	Data	C:\Users\probe\Documents\PROBE MAIN X HP\SUPPORT OUR OFFERINGS\Publications\ACTIVE PROJECTS\ROI 2020 PROJECT\SPSS FILES\WAVE1\ROI PROJECT PRIVATE.sav
	Active Dataset	DataSet1
	Filter	LEGACY = 2 (FILTER)
	Weight	<none>
	Split File	<none>
	N of Rows in Working Data File	35
Missing Value Handling	Definition of Missing	User-defined missing values are treated as missing.
	Cases Used	Statistics are based on all cases with valid data.

Syntax

```
FREQUENCIES  
VARIABLES=USRANK  
SaIPotEC SaIPotMC  
AVGGRDSL FAL2FAL  
SIXYR FOURYR DEF  
  /STATISTICS=STDDEV  
RANGE MINIMUM  
MAXIMUM MEAN MEDIAN  
MODE  
  /HISTOGRAM NORMAL  
  /ORDER=ANALYSIS.
```

Resources	Processor Time	00:00:01.70
	Elapsed Time	00:00:00.98

Statistics

		US News and World Report Ranking	Salary Potential Early Career	Salary Potential Mid Career	Average salary of graduating seniors	Fall to fall retention percentage rate
N	Valid	35	35	35	35	35
	Missing	0	0	0	0	0
Mean		15.06	64182.86	161488.57	78857.14	90.29
Median		10.00	67000.00	126200.00	80000.00	97.00
Mode		1	48600	77100 ^a	56000 ^a	97
Std. Deviation		18.938	13156.356	239208.315	16279.079	11.756
Range		83	46900	1450900	60000	46
Minimum		1	41900	77100	56000	53
Maximum		84	88800	1528000	116000	99

Statistics

		Six year graduation percentage rate	Four year graduation percentage rate	Three year default rate percentage for student loans
N	Valid	35	35	34
	Missing	0	0	1
Mean		82.69	74.09	2.471
Median		92.00	84.00	1.000
Mode		95	87	1.0
Std. Deviation		17.676	18.516	2.7218
Range		62	70	12.0
Minimum		36	21	.0
Maximum		98	91	12.0

a. Multiple modes exist. The smallest value is shown

Frequency Table

US News and World Report Ranking

		Frequency	Percent	Valid Percent	Cumulative Percent
Valid	1	10	28.6	28.6	28.6
	2	1	2.9	2.9	31.4
	3	2	5.7	5.7	37.1
	6	2	5.7	5.7	42.9
	9	1	2.9	2.9	45.7
	10	2	5.7	5.7	51.4
	12	2	5.7	5.7	57.1
	13	1	2.9	2.9	60.0
	15	2	5.7	5.7	65.7
	17	3	8.6	8.6	74.3
	21	1	2.9	2.9	77.1
	22	1	2.9	2.9	80.0
	23	1	2.9	2.9	82.9
	24	1	2.9	2.9	85.7
	25	1	2.9	2.9	88.6
	37	1	2.9	2.9	91.4
	43	1	2.9	2.9	94.3
	71	1	2.9	2.9	97.1
	84	1	2.9	2.9	100.0
	Total	35	100.0	100.0	

Salary Potential Early Career

		Frequency	Percent	Valid Percent	Cumulative Percent
Valid	41900	1	2.9	2.9	2.9
	43600	1	2.9	2.9	5.7
	45800	1	2.9	2.9	8.6
	46700	1	2.9	2.9	11.4
	48300	1	2.9	2.9	14.3
	48600	2	5.7	5.7	20.0
	49000	1	2.9	2.9	22.9
	49400	1	2.9	2.9	25.7
	50300	1	2.9	2.9	28.6
	52700	1	2.9	2.9	31.4
	56500	1	2.9	2.9	34.3
	58900	1	2.9	2.9	37.1
	64000	1	2.9	2.9	40.0
	65300	1	2.9	2.9	42.9
	65400	1	2.9	2.9	45.7
	66000	1	2.9	2.9	48.6
	67000	1	2.9	2.9	51.4
	67200	1	2.9	2.9	54.3
	67700	1	2.9	2.9	57.1
	68500	1	2.9	2.9	60.0
	70100	1	2.9	2.9	62.9
	71000	1	2.9	2.9	65.7
	71600	1	2.9	2.9	68.6
	73100	1	2.9	2.9	71.4
	73500	1	2.9	2.9	74.3
	73900	1	2.9	2.9	77.1
	74800	1	2.9	2.9	80.0
	75000	1	2.9	2.9	82.9
	75900	1	2.9	2.9	85.7
	76800	1	2.9	2.9	88.6
	80100	1	2.9	2.9	91.4
	84100	1	2.9	2.9	94.3
	86300	1	2.9	2.9	97.1
	88800	1	2.9	2.9	100.0
	Total		35	100.0	100.0

Salary Potential Mid Career

		Frequency	Percent	Valid Percent	Cumulative Percent
Valid	77100	1	2.9	2.9	2.9
	77200	1	2.9	2.9	5.7
	80500	1	2.9	2.9	8.6
	82900	1	2.9	2.9	11.4
	84300	1	2.9	2.9	14.3
	86600	1	2.9	2.9	17.1
	89400	1	2.9	2.9	20.0
	95000	1	2.9	2.9	22.9
	95700	1	2.9	2.9	25.7
	100600	1	2.9	2.9	28.6
	106100	1	2.9	2.9	31.4
	106900	1	2.9	2.9	34.3
	112800	1	2.9	2.9	37.1
	117100	1	2.9	2.9	40.0
	119100	1	2.9	2.9	42.9
	123800	1	2.9	2.9	45.7
	125900	1	2.9	2.9	48.6
	126200	1	2.9	2.9	51.4
	128200	1	2.9	2.9	54.3
	129500	1	2.9	2.9	57.1
	130500	1	2.9	2.9	60.0
	136100	1	2.9	2.9	62.9
	138600	1	2.9	2.9	65.7
	142200	1	2.9	2.9	68.6
	145400	1	2.9	2.9	71.4
	146600	1	2.9	2.9	74.3
	146800	1	2.9	2.9	77.1
	149500	1	2.9	2.9	80.0
	151500	1	2.9	2.9	82.9
	151600	1	2.9	2.9	85.7
	152700	1	2.9	2.9	88.6
	154300	1	2.9	2.9	91.4
	155200	1	2.9	2.9	94.3
	158200	1	2.9	2.9	97.1
	1528000	1	2.9	2.9	100.0
Total		35	100.0	100.0	

Average salary of graduating seniors

		Frequency	Percent	Valid Percent	Cumulative Percent
Valid	56000	2	5.7	5.7	5.7
	58000	1	2.9	2.9	8.6
	60000	2	5.7	5.7	14.3
	61000	2	5.7	5.7	20.0
	62000	1	2.9	2.9	22.9
	63000	2	5.7	5.7	28.6
	65000	1	2.9	2.9	31.4
	72000	2	5.7	5.7	37.1
	73000	1	2.9	2.9	40.0
	75000	1	2.9	2.9	42.9
	78000	2	5.7	5.7	48.6
	80000	1	2.9	2.9	51.4
	81000	2	5.7	5.7	57.1
	82000	2	5.7	5.7	62.9
	84000	2	5.7	5.7	68.6
	86000	2	5.7	5.7	74.3
	88000	1	2.9	2.9	77.1
	91000	1	2.9	2.9	80.0
	92000	1	2.9	2.9	82.9
	93000	1	2.9	2.9	85.7
98000	1	2.9	2.9	88.6	
103000	1	2.9	2.9	91.4	
110000	2	5.7	5.7	97.1	
116000	1	2.9	2.9	100.0	
Total		35	100.0	100.0	

Fall to fall retention percentage rate

		Frequency	Percent	Valid Percent	Cumulative Percent
Valid	53	1	2.9	2.9	2.9
	64	1	2.9	2.9	5.7
	66	1	2.9	2.9	8.6
	68	1	2.9	2.9	11.4
	80	1	2.9	2.9	14.3
	81	2	5.7	5.7	20.0
	82	1	2.9	2.9	22.9
	86	2	5.7	5.7	28.6
	89	1	2.9	2.9	31.4
	91	2	5.7	5.7	37.1
	93	1	2.9	2.9	40.0
	95	1	2.9	2.9	42.9
	96	1	2.9	2.9	45.7
	97	9	25.7	25.7	71.4
	98	5	14.3	14.3	85.7
	99	5	14.3	14.3	100.0
	Total		35	100.0	100.0

Six year graduation percentage rate

		Frequency	Percent	Valid Percent	Cumulative Percent
Valid	36	1	2.9	2.9	2.9
	44	1	2.9	2.9	5.7
	50	1	2.9	2.9	8.6
	51	1	2.9	2.9	11.4
	53	1	2.9	2.9	14.3
	61	1	2.9	2.9	17.1
	65	1	2.9	2.9	20.0
	69	1	2.9	2.9	22.9
	74	1	2.9	2.9	25.7
	76	1	2.9	2.9	28.6
	82	2	5.7	5.7	34.3
	86	1	2.9	2.9	37.1
	88	1	2.9	2.9	40.0
	89	1	2.9	2.9	42.9
	90	1	2.9	2.9	45.7
	91	1	2.9	2.9	48.6
	92	2	5.7	5.7	54.3
	93	1	2.9	2.9	57.1
	94	4	11.4	11.4	68.6
	95	6	17.1	17.1	85.7
96	2	5.7	5.7	91.4	
97	2	5.7	5.7	97.1	
98	1	2.9	2.9	100.0	
Total		35	100.0	100.0	

Four year graduation percentage rate

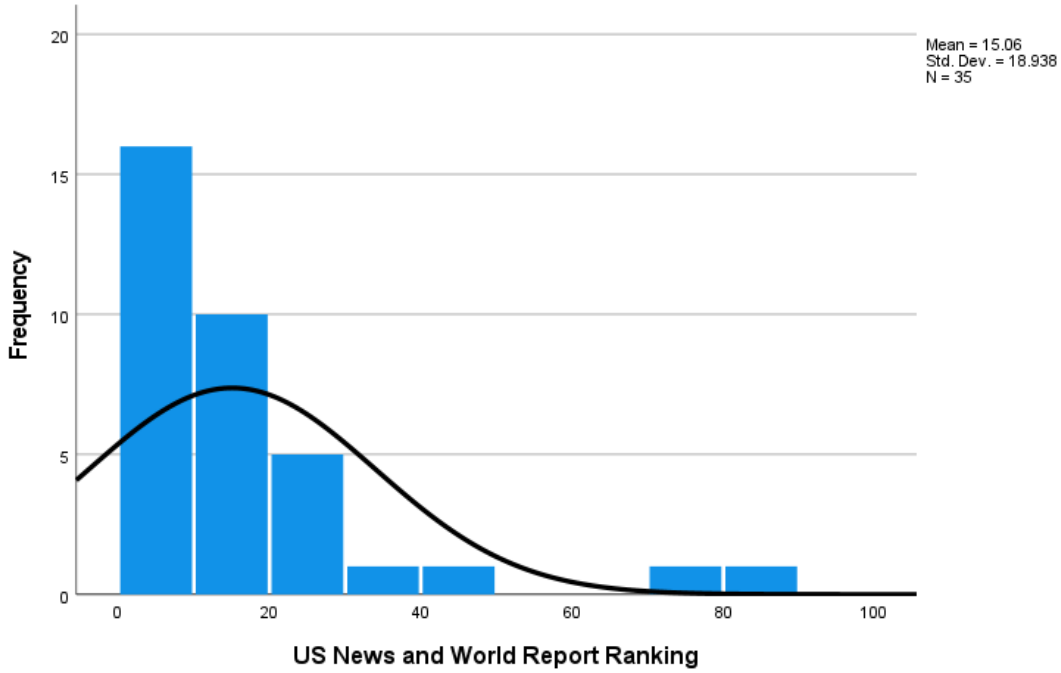
		Frequency	Percent	Valid Percent	Cumulative Percent
Valid	21	1	2.9	2.9	2.9
	39	1	2.9	2.9	5.7
	43	2	5.7	5.7	11.4
	46	1	2.9	2.9	14.3
	50	1	2.9	2.9	17.1
	55	1	2.9	2.9	20.0
	59	1	2.9	2.9	22.9
	63	1	2.9	2.9	25.7
	65	1	2.9	2.9	28.6
	68	1	2.9	2.9	31.4
	71	1	2.9	2.9	34.3
	75	2	5.7	5.7	40.0
	81	1	2.9	2.9	42.9
	83	2	5.7	5.7	48.6
	84	1	2.9	2.9	51.4
	85	3	8.6	8.6	60.0
	86	2	5.7	5.7	65.7
	87	4	11.4	11.4	77.1
	88	2	5.7	5.7	82.9
	89	3	8.6	8.6	91.4
90	2	5.7	5.7	97.1	
91	1	2.9	2.9	100.0	
	Total	35	100.0	100.0	

Three year default rate percentage for student loans

		Frequency	Percent	Valid Percent	Cumulative Percent
Valid	.0	4	11.4	11.8	11.8
	1.0	14	40.0	41.2	52.9
	2.0	6	17.1	17.6	70.6
	3.0	1	2.9	2.9	73.5
	4.0	4	11.4	11.8	85.3
	5.0	1	2.9	2.9	88.2
	6.0	2	5.7	5.9	94.1
	10.0	1	2.9	2.9	97.1
	12.0	1	2.9	2.9	100.0
	Total	34	97.1	100.0	
Missing	99.0	1	2.9		
Total		35	100.0		

Histogram

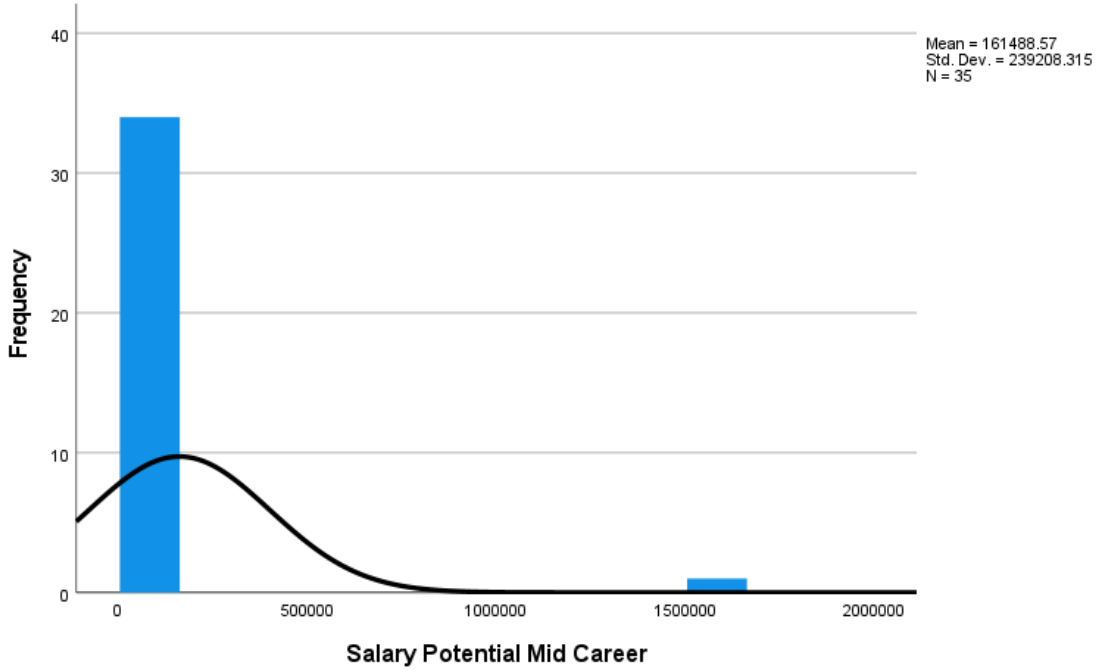
US News and World Report Ranking



Salary Potential Early Career



Salary Potential Mid Career



Average salary of graduating seniors

