

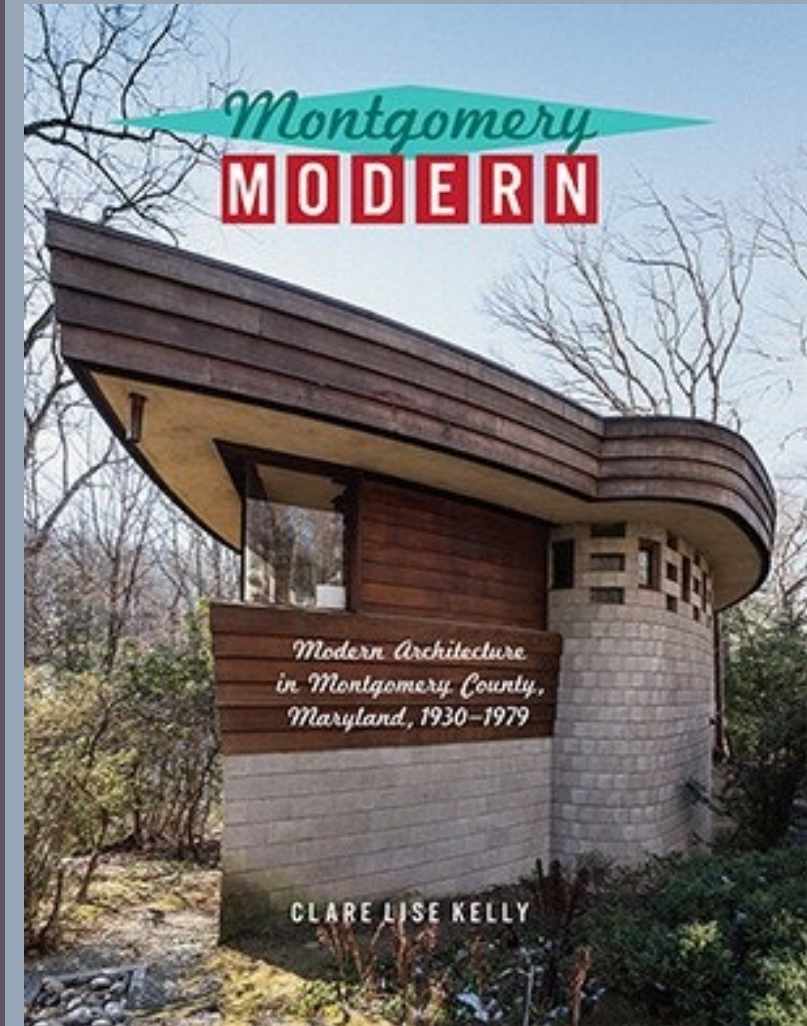


**CHARLES GOODMAN  
INSIDE AND OUT  
MAY 16, 2026**

# The Context

Montgomery County is the epicenter of mid-century modern resources in the Washington region

With outstanding research and advocacy, numerous significant resources are recognized and protected



# MONTGOMERY MODERN BUS TOUR

Docomomo Tour Day  
SATURDAY, OCTOBER 5, 2013

MARYLAND-NATIONAL CAPITAL PARK AND PLANNING COMMISSION

# MONTGOMERY MODERN BIKE TOUR

Docomomo Tour Day  
Saturday • October 11, 2014

MARYLAND-NATIONAL CAPITAL PARK AND PLANNING COMMISSION

# BUSTOUR

Docomomo Tour Day  
Sunday, October 8, 2017

Montgomery MODERN

THE MARYLAND-NATIONAL CAPITAL PARK AND PLANNING COMMISSION

# Montgomery MODERN BUS TOUR

Saturday, October 8, 2016

DOCOMOMO TOUR DAY

MARYLAND-NATIONAL CAPITAL PARK AND PLANNING COMMISSION



**BUILDINGS AND COMMUNITIES THAT REFLECT THE WORK OF ARCHITECTS SUCH AS E. BURTON CORNING, CHARLES GOODMAN, JOHN J. EARLEY, MIHRAN MESROBIAN, KEYS LETHBRIDGE & CONDON, AND FRANK LLOYD WRIGHT**

# The Post-WWII Housing Boom

Returning WWII Veterans fueled the need for more housing. There were many approaches resulting in communities like Levittown and, locally, like Viers Mill Village.



# Mid-20<sup>th</sup> Century: the Era of Housing Experimentation

Wright – Usonian Homes

Marcel Breuer – Krieger Home in Bannockburn



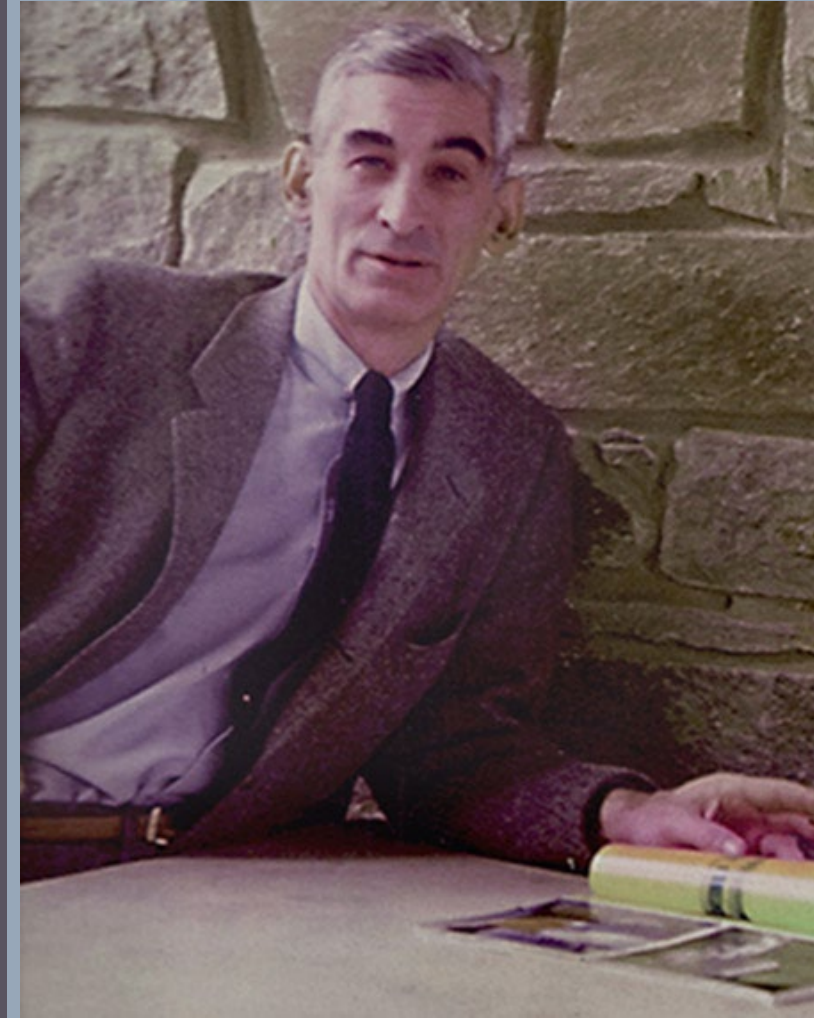
# Polychrome Houses John Joseph Earley 1934





# Who was Charles Goodman?

Goodman was a leading modernist architect in Washington during the 1950s, known for redefining suburban housing. He was the first in the region to apply Modernist principles at scale, influencing both architecture and land planning. His most significant impact came through his builder-designed houses. Goodman transformed suburban living by creating glass-walled homes that blended indoors and outdoors, repeatedly reinventing floor plans, using unconventional materials, and integrating houses with natural surroundings.



# Research & Documentation

## Charles Goodman in Montgomery County

- Hammond Hill, 1949
- Hammond Wood, 1950
- Wheatoncrest, 1951-1952
- Takoma Avenue, 1951
- Rock Creek Woods, 1958
- Hollinridge, 1958
- Crest Park 1960
- William and Susan Schlosser House, Chevy Chase
- Joseph and Phyllis Homes House, Chevy Chase
- Lewis Jacobs House, Chevy Chase
- Paul Burman House, Chevy Chase
- G. Barry Radebaugh House, Silver Spring
- Malcolm Garfinck House, Silver Spring
- Alvin Q. Ehrlich House, Bethesda
- Verl Roberts House, Bethesda

### NATIONAL REGISTER MULTIPLE PROPERTY DOCUMENTATION FORM

Subdivisions and Architecture Planned and Designed by  
Charles M. Goodman Associates in Montgomery County,  
Maryland



Elizabeth Jo Lampl, Architectural Historian and Consultant  
Montgomery County Department of Park and Planning,  
Historic Preservation Section

January 2004

# National Register designation of Goodman subdivisions in Montgomery County

Hammond Wood, 2004

Rock Creek Woods, 2004

Takoma Avenue, 2004





## Technology:

- Post and beam framing
- Flat or low slope roof
- Use of metal:
  - Aluminum for sunscreens and roof areas
  - Copper for building facades
- Prefab modules:
  - Wall assembly
  - Window panels
- Prefab homes
- Radiant heating
- Grid system for planning
- Modular kitchens
- Cross laminated Timber Construction (CLT)
- Community heating/cooling



## Site Planning:

- **Micro Site Planning**
  - Indoor/outdoor relationships
- **Macro Site Planning** –
  - No fences
  - Use of native plants
  - Stream valley protection
  - Open spaces/parks
  - Connections

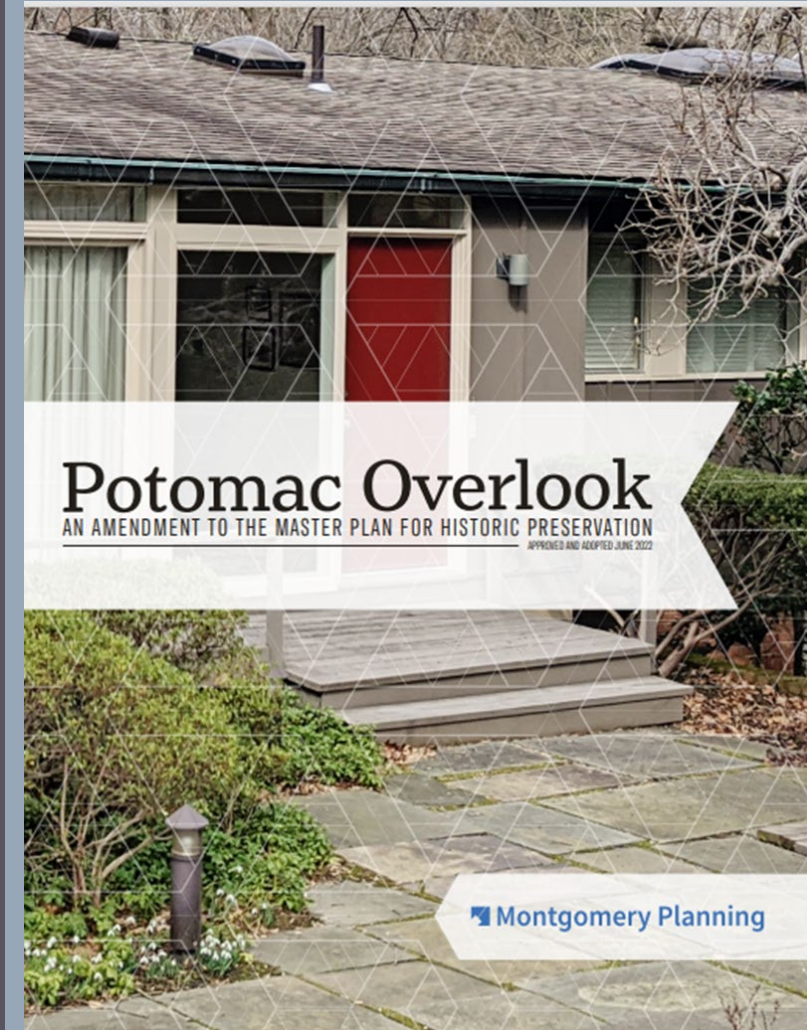
## Environment:

- Passive solar, green roof areas
- Tree preservation
- Minimum grading
- Stream protection
- Carbon footprint reduction
- Green neighborhood planning

# Potomac Overlook, late 1950s

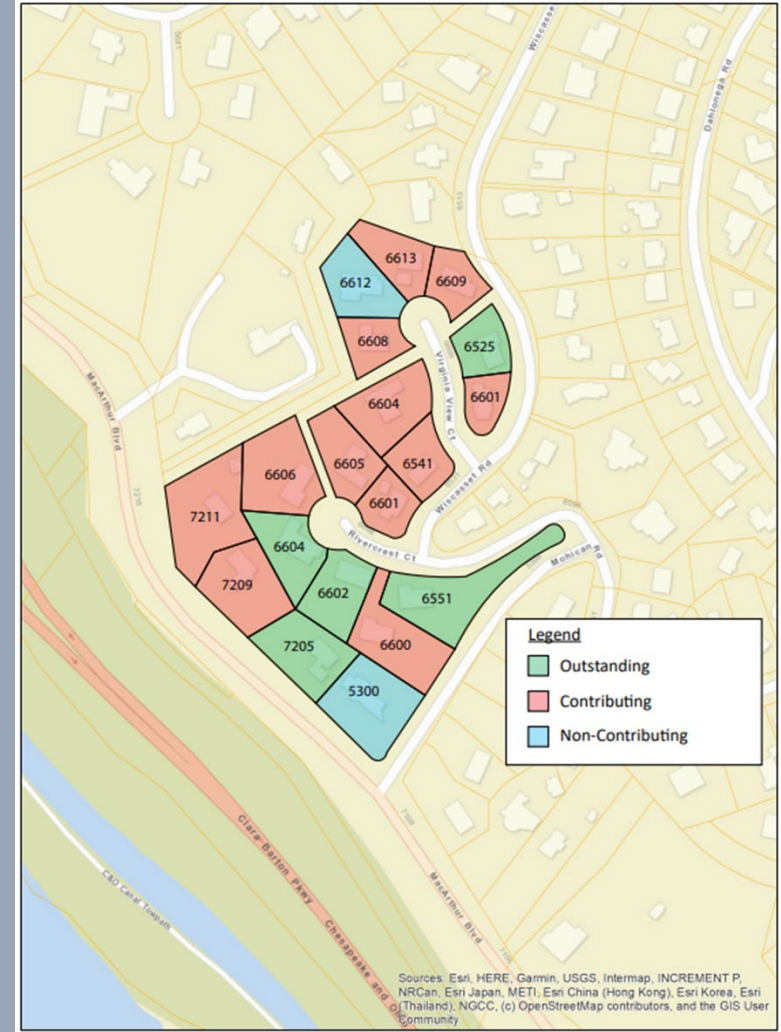
First local designation of a midcentury modern residential neighborhood – 3 year process

Collaboration of merchant builder Edmund J. Bennett and the architecture firm of Keyes, Lethbridge, and Condon  
Design Guidelines key to designation



# Categorization of houses as:

- \*Contributing
- \*Outstanding
- \*Non-Contributing



**Lost resources:  
900 Spring St.  
Wheaton Recreation Center  
Dept. of Recreation Building**



# Most Recent Loss: COMSAT

