

☎ 336-937-0028  
✉ Amy@ExpressHomeRealty.com  
🌐 ExpressHomeRealty.com

Prices Start at:  
**\$219,900**



# West Lee Townhomes

**West Lee Avenue Yadkinville, NC**

## PROPERTY FEATURES PHASE 1: 8 UNITS

<b>Units:</b>	<b>16 Total</b>
<b>Bedrooms:</b>	<b>2</b>
<b>Baths:</b>	<b>2</b>
<b>Garage:</b>	<b>1 Car Attached</b>
<b>Living Space:</b>	<b>1150-1200</b>



*Amy Jarvis*  
REALTOR

(m) 336-448-4255  
Amy@ExpressHomeRealty.com  
ExpressHomeRealty.com



Express Home Realty  
Post Office Box 125  
Advance, NC 27006  
336-937-0028

## *Interior Finishes*

- Stainless steel appliances (range, hood, dishwasher and microwave)
- Range hood vented to outside
- Granite kitchen counter tops
- Tile backsplash at kitchen
- Stainless Steel under-mount kitchen sink
- Garbage disposal with on/off switch
- Kitchen pantry
- Solid wood cabinets with soft-close drawers and doors in kitchens
- Air-sealed recessed can lighting in ceilings
- Cathedral ceilings
- Elongated toilets
- Painted interior doors
- Walk-in closet in Primary bedroom
- Electric fireplace
- 5 1/4 baseboards on floors and 2 1/4 door casing trim
- Luxury Vinyl Plank Flooring
- Matte Black, Satin Nickel or chrome faucets
- Fiberglass Shower in Primary-bedroom (60 inch)
- Separate wall, trim and ceiling colors.
- Glass shower door in Primary shower

## *Mechanical Systems*

- PEX (cross-linked polyethylene) domestic water supply piping system
- 200 amp electrical service
- 50 gallon electric domestic water heater
- Variable speed electric heat pump
- Fully programmable thermostat
- CAT5e Ethernet
- Cooktop venting to exterior

## *Exterior Finishes*

- Covered Rear Patio on concrete slab
- Insulated Steel Overhead Door in garage
- 25+ Year, architectural roof shingles
- Fiberglass Entry Door
- Freeze-proof hose bibs on exterior
- Vinyl siding

## *Architectural Features*

- 2×4 exterior wall construction
- Finished garages (insulated, drywalled, painted, baseboard trim)
- Foam insulation at all doors, windows and penetrations
- Dual-pane with low-e and Argon vinyl windows
- Insulated walls and ceilings

## *Additional Information*

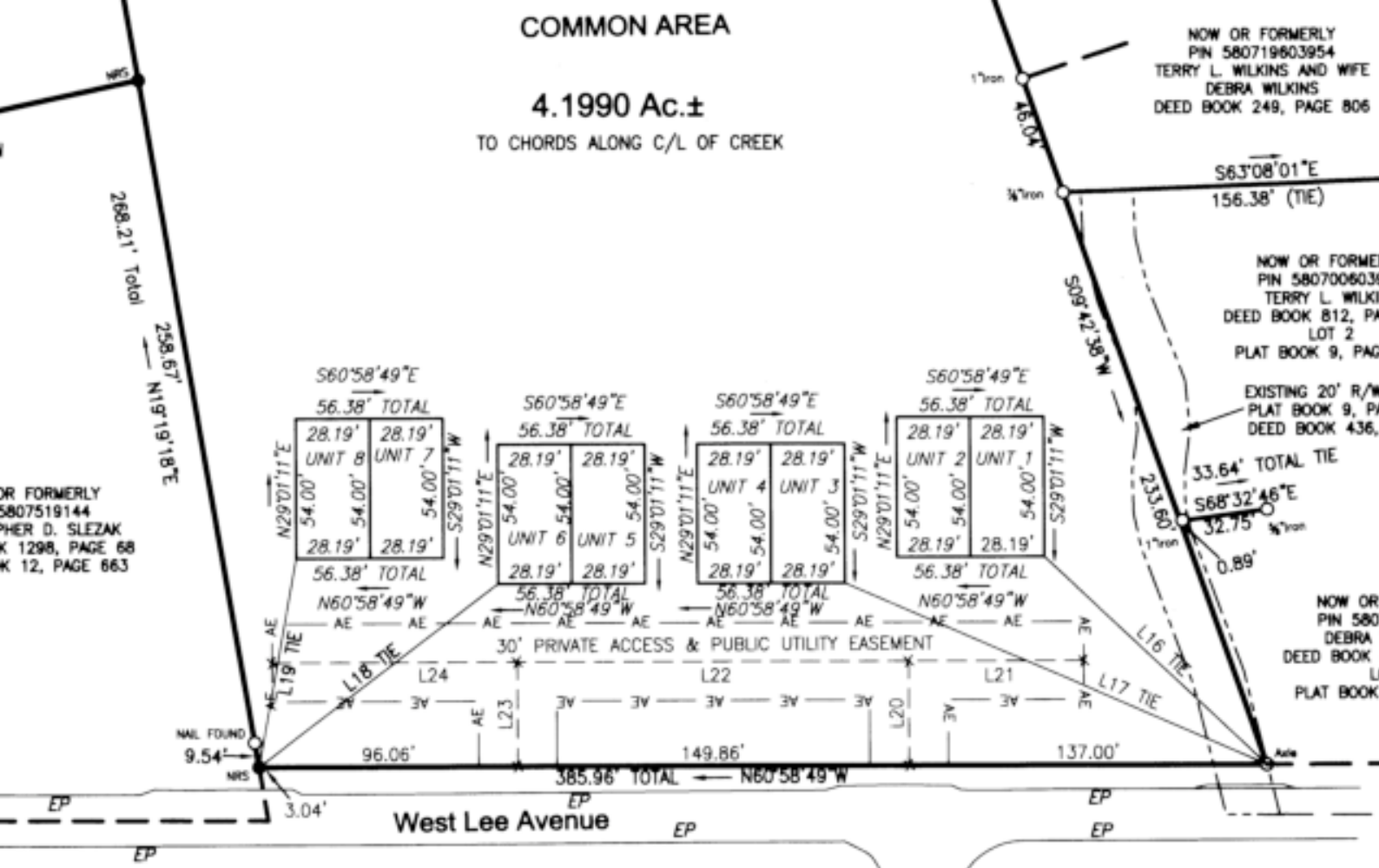
- Public Water and Sewer
- Window Screens available
- Ceiling fans in both bedrooms and Living room
- Luxury Package - With additional luxury items - prices are subject to change.

## *Optional Upgrades*

- Screened covered porch \$3500
- Hardwoods \$5800
- Quartz countertops \$2500
- Gray or stained cabinets \$2400

## *Dimensions from Plans:*

- Great Room: 15.5 x 15.4
- Dining Room: 11.8 x 10
- Kitchen: 11 x 10.7
- Primary Bedroom: 15.4 x 11.8
- Bedroom 2: 11.4 x 12.1
- Covered Porch: 12 x 8
- Garage: 12 x 20



# West Lee Townhomes

Phase 1: Units 1-8

Builder:

**Jarvis-Kennedy Custom Homes**

Preferred Lender

**Supreme Lending**

**Robbyn Foster**

**281-620-8433**

**\*\*Prices & Remarks are subject to change without notice**

02/25/2022