

# SILVER MIST

---

## AQUATIC PLANT MANAGEMENT

### SM 401

Operator's Manual

V 1.1

Revision Date May 2025





## Table of Contents

### Contents

1. Introduction.....	6
1.1 Initial Purchase Checklists .....	8
Pre-Delivery .....	8
Delivery Checklist .....	9
Trailer Unload Harvester Checklist .....	10
2. General Harvester Information .....	11
Specifications.....	11
Key Features:.....	11
3. Safety Information .....	12
Safety Shutdown Procedure .....	13
Before Starting.....	13
During Operation .....	14
Maintenance Safety .....	16
Operator Qualifications:.....	17
Personal Safety Equipment: .....	17
4. Pre-Operation Checklist.....	18
Harvester Inspection:.....	18
Safety Gear:.....	18
Weather and Water Conditions:.....	18
5. Operating Instructions .....	19
Selecting Attachments .....	19
Adding/Removing Attachment .....	19
Hose Attachment.....	20
Toolbox – Battery and Fire Extinguisher .....	21
Fuel Tank.....	21
Starting the Harvester: .....	21
Controls/Gauges .....	22
Activating the Pump/Dredger Function .....	26
Deactivating the Pump/Dredger Function .....	26
6. Transporting the Harvester .....	27

7. Maintenance and Care .....	28
Routine Maintenance .....	28
Hydraulic Oil.....	29
Troubleshooting:.....	30
8. Legal and Environmental Responsibilities .....	32
Boating Laws .....	32
Environmental Stewardship.....	32
9. Appendices .....	32
10. Support .....	32
11. Limited Warranty .....	33

Eco Harvester LLC is solely responsible for the content of the SILVER MIST Aquatic Plant Management SM 401 Operator's Manual. Eco Harvester LLC reserves the right to add, delete, or change the content of this manual without prior notification.

This book is presented solely for informational purposes. While best efforts have been used in preparing this book, the author and publisher assumes no liabilities of any kind with respect to the accuracy of completeness of the contents. Neither the author nor the publisher shall be held liable or responsible to any person or entity with respect to any loss or incidental or consequential damages caused, or alleged to have been caused, directly or indirectly, by the information or programs contained herein.

# 1. Introduction

**Purpose of the Manual:** To provide safe, efficient operation instructions for the Harvester.

Intended Audience: Owner of SM401.

This Operator's Manual gives the owner/ operator information for operating, maintaining, and servicing the SILVER MIST SM401 Aquatic PLANT Management Machine. This manual provides the operator with information required for safe operation of the SM401. Major points of safe operation are detailed in the Safety chapter of this manual.

It is recommended that you read and understand the contents of this manual completely and become familiar with this machine before operating it. See your authorized SILVER MIST dealer if you have any questions concerning information in this manual or require additional manuals.

Information in this manual may be set in italic type and introduced by the words NOTE or IMPORTANT. BE SURE to carefully read and comply with the message – It will improve your operating and maintenance efficiency, help avoid breakdowns and damage, extend your machine's life, and improve the operator's safety.

It suggests the Operator's Manual be stored in the storage box of the machine.

DO NOT use this machine for any applications or purposes other than those described in this manual. Any person using non---approval attachments with this machine is responsible for the consequences.

SILVER MIST stands ready to provide any assistance you may require, including providing service parts. All service parts should be obtained from your SILVER MIST dealer.

Record the serial number in the space provided above as a record for quick reference.

“Right” and “Left” are determined from a position sitting on the seat and facing forward. From this position, the engine speed control is on the “right”.

Please be aware that SILVER MIST strives to continually improve its products and reserves the right to make changes and improvements in the design and construction of any part without incurring the obligation to install such changes on any unit previously delivered.

**Safety Disclaimer:** It is imperative the operator know local regulations and guidelines and follow applicable laws.

# 1.1 Initial Purchase Checklists

## Pre-Delivery

The following checklist is an important reminder of valuable information and inspections which **MUST** be made before delivering this machine to the customer. Check off each item after prescribed action is taken.

### Check that:

- Unit has not been damaged in shipment. Check for such items as dents and loose or missing parts; correct or replace components as required.
- Battery is securely mounted and not cracked.
- Hydraulic pumps, valves, cylinders, motors, and hoses are not damaged, are properly mounted, and are not leaking.
- Filters are not damaged, leaking, or loosely secured.
- Hydraulic system reservoir and engine crankcase are filled to their proper levels with the proper fluids.
- All guards, shields, hoses, and decals are in place and securely attached.
- Model and serial numbers, for this machine, are recorded in the space provided on this page
- **Start the machine and test-run to check for proper operation of all controls.**

I acknowledge that pre-delivery procedures were performed on this machine as outlined in the Pre-Delivery Checklist.

---

Dealership Name

---

Dealer Representative's Name

---

Date Checklist Completed

---

Model Number

Serial Number

Engine Serial Number



## Delivery Checklist

The following Checklist is an important reminder of valuable information and **MUST** be passed on to the customer at the time the unit is delivered. Check off each item as it is explained to the customer.

Review with the customer the contents of this manual; especially:

- The Table of Contents for quickly locating topics.
- The Safety, Controls & Safety Equipment, and Operations chapters for information regarding safe use of the machine.
- The Maintenance, and Troubleshooting chapters for information regarding proper maintenance of the machine. Explain that regular lubrication and maintenance are required for continued safe operation long life.
- Give the Operator's Manual to the customer and instruct the customer to be sure to read and completely understand its contents **BEFORE** operating this machine.
- Explain that the customer **MUST** consult the engine manual (provided) for related specifications, operating adjustments, and maintenance instructions.

Completely fill out the Owner's Registration, including customer's signature, and return it to the company.

---

Customer's Signature

---

Date Delivered

## Trailer Unload Harvester Checklist

The checklist below is for unloading the harvester off the trailer into a body of water

- Review boat landing area for landing and hose placement
- Ensure both hull plugs are inserted (located underneath hull)
- Raise “stabilizer poles” a few inches off the trailer
- Remove 4 Straps (2 on the either side , 1 main crank winch strap, 1 rear strap for the strain relief arm)
- Attach hose to rear of the harvester, and attach strap around the hose to the strain relief arm

## Trailer Load Harvester Checklist

The checklist below is for loading the harvester into the trailer

- Review boat landing area for loading
- Ensure the trailer is deep enough in the water enough for the harvester to go onto the trailer

Preparation On Harvester before loading to Trailer:

- Raise “stabilizer poles” all the way up
- Ensure the auger is deactivated or in the neutral position
- Detach hose from rear of the harvester, as it will be hard to maneuver when it is filled with material
- Secure strain relief arm to trailer
- Turn off engine

On Trailer:

- Give enough slack for the hand trailer winch can secure to the auger arm
- Use trailer hand winch to pull harvester to trailer  
**IMPORTANT:** Ensure the board runner board have the carpet material , otherwise it can damage the hull

After the harvester is on the trailer, lower the auger arm, so it is resting on the trailer bed.

## 2. General Harvester Information

### Specifications:

Model	SM401
Hull Dimensions	Width 6' Length 8' Height 2'
Overall Dimensions	Width 6' Length 14' Height 10' 7"
Weight	1,540 lbs
Engine Manufacturer	Vanguard EFI 40
Engine Horsepower	40
Fuel Type	Gasoline – No Ethanol
Fuel Capacity	10 gallons
Max Personnel Onboard	1 person
Hose Length	50ft included
Hydraulics	4 pumps
Hydraulic Oil Capacity	20 gallons
Downward reach	10 ft
Max Dept of Downrigger poles	7' 3"

### Key Features:

The Eco-Force is the only harvester on the market that offers a unique combination of 3-in-1 functionality: suction weed harvesting, dredging, and skimming. Meticulously engineered to overcome the limitations of traditional lake weed harvesters, the Eco-Force starts at less than half the price of the nearest competitor, which only removes sediment from the lake or pond bottom. Unique capabilities (e.g., weed harvesting, debris skimming, shallow-water operation).



### 3. Safety Information



The above Safety Alert Symbol Means ATTENTION! BECOME ALERT! YOUR SAFETY IS INVOLVED! It stresses an attitude of “Heads Up for Safety” and can be found throughout this manual and on decals on this machine.

Before you attempt to operate this machine, read and study the following safety information. In addition, be sure that everyone who operates or works with this machine, whether family member or employee, is familiar with these safety precautions. It is essential to have competent and careful operators, who are not physically or mentally impaired, and who are thoroughly trained in the safe operation of the machine. It is recommended that the operator be capable of obtaining a valid motor vehicle operator's license.

Use of this machine is subject to certain hazards that cannot be eliminated by mechanical means, but only by exercising intelligence, care, and common sense. Such hazards include, but are not limited to weather conditions, overloading, instability of the load, poor maintenance, and using the machine for a purpose for which it was not intended or design.

SILVER MIST Aquatic Systems ALWAYS takes the operator and his/her safety into consideration when designing this machine and guards exposed to moving parts. However, some areas cannot be guarded or shielded in order to assure proper operation. Furthermore, this Operator's Manual and decals on the machine warn of additional hazards and should be read and observed closely.

Some photographs used in this manual may show doors, guards, and shields open or removed for illustration purposes ONLY. BE SURE that all doors, guards, and shields are in their proper operating positions BEFORE starting the engine to operate the machine.

Different applications may require certain optional safety equipment. BE SURE you know the job site hazards and equip your machine as needed.



## DANGER

**“DANGER” indicates an imminently hazardous situation which, if not avoided, will result in death or serious injury.**

---



## WARNING

**“WARNING” indicates a potentially hazardous situation which, if not avoided, could result in death or serious injury.**

---



## CAUTION

**“CAUTION” indicates a potentially hazardous situation which, if not avoided, may result in minor or moderate injury. May also alert against unsafe practices.**

---

### Safety Shutdown Procedure

1. Secure craft with anchors or cast lines to dock.
2. Move directional controls to “neutral” positions.
3. Shut off engine and remove key.

ONLY when you have taken these precautions can you be sure it is safe to proceed. Failure to follow this procedure could lead to death or serious bodily injury.

### Before Starting

- Operator is properly wearing a Personal Flotation Device (PFD)
- To ensure safe operation, replace damaged or worn parts with SILVER MIST service parts, BEFORE operating this machine.
- Remove all trash and debris from the machine each day, especially in the engine compartment, to minimize the risk of fire.

- Always face the machine and use hand holds when getting on and off the machine.
- Do not wear loose clothing, long uncovered hair, or jewelry near the machine.
- Do not use machine in an atmosphere with explosive dust or gases or where exhaust can contact flammable material. Explosion or fire may result.
- Check near machine and warn all nearby personnel before starting the machine.
- Always perform a daily inspection of the machine before using it. Look for damage, loose or missing parts, leaks, etc. Be sure fluid levels are at the proper level for operation and all guards and shields are in place

REMEMBER, it is the owner's responsibility for communicating information on the safe use and proper maintenance to users of this machine.

### During Operation

- When operating, be comfortable in the operator's area with your feet in their proper place and at least one hand on the steering control levers.
- Start the operation slowly and carefully.

The engine speed, water conditions, load being carried, abrupt control movements can affect stability. IF MISUSED, ANY OF THE ABOVE FACTORS CAN CAUSE THE MACHINE TO TIP, THROWING THE OPERATOR OUT OF BALANCE OR OUT OF THE MACHINE, CAUSING DEATH OR SERIOUS BODILY INJURY.

Therefore, ALWAYS operate the machine with caution. Operate the controls smoothly and gradually at an appropriate engine speed that matches the operating conditions.

- NEVER carry riders. Do not allow others to ride on the machine because they could fall or cause an accident.
- NEVER use ether on a gasoline fueled engine. Use only starting aids as approved by the engine manufacturer.
- Stop and cool the engine before adding fuel.
- Do not exceed rated operating capacity.
- Always look to the rear before backing up the machine.

- Operate the controls only from the operator's compartment.
- Always keep hands and feet inside the operator's compartment while operating the machine.
- New operators must practice machine operation in an open area away from bystanders. Practice with the controls until the machine can be operated safely and efficiently.
- Exhaust fumes can kill. Do not operate this machine in an enclosed area unless there is adequate ventilation.
- When exiting the machine, make certain the machine is anchored or secured to a dock.

## Maintenance Safety

- NEVER use your hands to search for hydraulic fluid leaks. Use a piece of paper or cardboard. Escaping fluid under pressure can be invisible and can penetrate the skin and cause serious injury. If any fluid is injected into your skin, see a doctor at once. Injected fluid MUST be surgically removed by a doctor familiar with this type of injury or gangrene may result.
- ALWAYS wear safety glasses with side shields when striking metal against metal. In addition, it is also recommended that a softer (chip-resistant) material be used to cushion the blow. Failure to heed could lead to serious injury to the eyes or other body parts.
- ALWAYS wear eye protection when servicing the machine. Wear a hard hat or other protection as needed.
- NEVER charge a frozen battery.
- Lead acid batteries produce flammable and explosive gases. Keep electrical arcs, sparks, flames, and smoking materials away from the batteries.
- Battery acid causes severe burns. In case of acid contact, immediately wash with water and seek medical attention.
- DO NOT smoke while filling the fuel tank or while working on the fuel or hydraulic systems.



### Operator Qualifications:

- 18 years of age
- Complete Boat Safety Certificate relative to the state requirements

### Personal Safety Equipment:

- Life jackets required- not provided
- Fire extinguisher – provided in the tool compartment
- First aid kit – not provided

## 4. Pre-Operation Checklist

### Harvester Inspection:

- Check Hull for cracks, leaks
- Perform propeller and rudder inspection
- Ensure Drown Rigger Poles (also referred to as stabilizer poles) are fully extended up
- Ensure fuel levels and oil are full
- Ensure the battery has a charge

### Safety Gear:

- Ensure life jackets, fire extinguishers, and other safety equipment are onboard and used.

### Weather and Water Conditions:

- Checking weather forecasts and water depth.
- Back Harvester into the water where appropriate and near where the hose can be dropped off.
- **IMPORTANT:** *Locate area where water and debris can be offloaded to the shore. Use a silt fence or erosion control sock to ensure the muck debris stays on the shore, otherwise the output can go back into the water.*

## 5. Operating Instructions

### Selecting Attachments

The harvester SM401 comes with an optional skimming attachment. Use this attachment when skimming the top of the water.

**TIP:** If using the skimmer attachment, that step is generally done after dredging has been completed.



### Adding/Removing Attachment

#### Adding attachment

1. The attachment should be installed by 2 people.
2. Lower the attachment on top of the pump arm
3. Then attach the 6 bolts (1/2 inch) to secure the skimmer to the pump arm.
4. Adjust the angle of the skimmer as needed, by loosening the 2 lower bolts on each side, then secure the bolts, once the proper position is determined.



Removing the attachment:

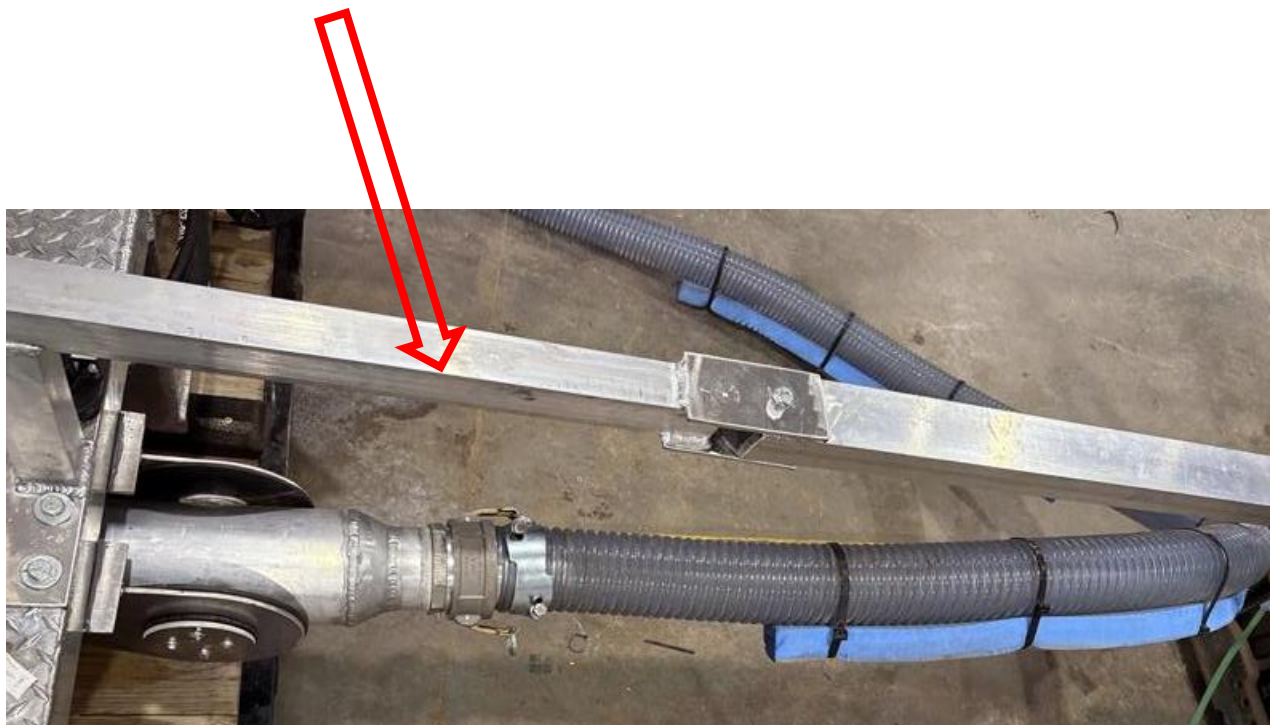
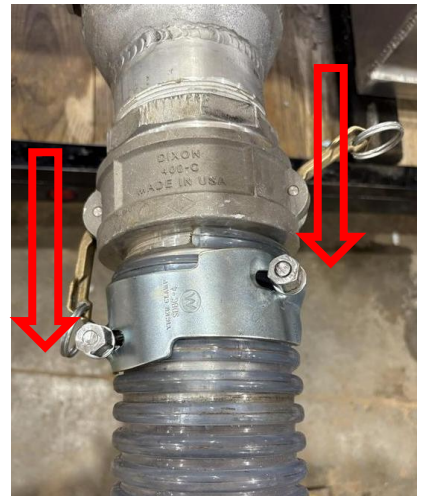
1. There are 3 bolts are each side of the skimmer attachment. Remove all 6 bolts
2. Lift the skimmer attachment, one person on each side of the attachment
3. Keep the bolts in secure area for later use

**TIP:** Use a zip lock bag and place them in the toolbox area (where the battery and fire extinguisher are located)

## Hose Attachment

The “hose attachment” is connected with 2 brass clamps that secures it to the female hose housing on the harvester. Pull the clamps down to secure them to the harvester. The hose comes with 50 ft, additional hose length can be added. The length of hose that can be used will depend on the slope. Adjust the length of the hose as needed.

The hose is also attached to the **strain relief arm** to ensure the hose does not get caught in the propellers. It is attached with a small strap at the end of the strain relief arm



## Toolbox – Battery and Fire Extinguisher

The toolbox is located to the right of the operator's console. The battery and fire extinguisher are located inside the compartment.



## Fuel Tank

The fuel tank is to the right of the operator's console with a red cap. It has a 10-gallon fuel capacity. Use premium, non-ethanol gasoline fuel.



## Starting the Harvester:

1. Ensure all controls are all in the neutral position
2. Ensure the throttle is off (slow position)
3. Turn on Engine with key.





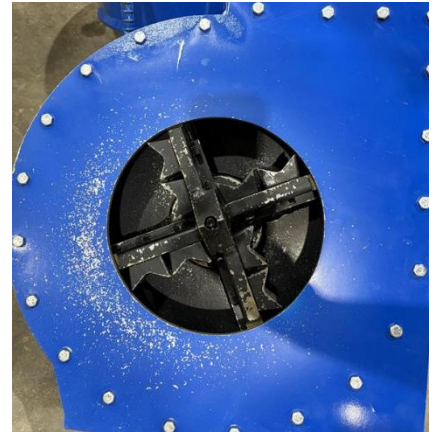
## Controls/Gauges



### Load/Unload:

The load and unload controls activate the pump and will turn the dredging teeth. Each of the Load/Unload levers control the right or left auger respectively.

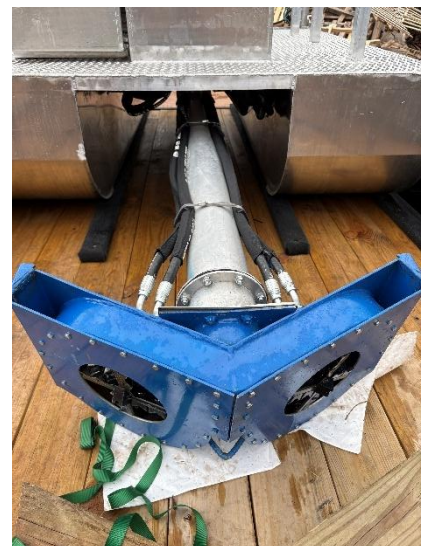
TIP: If in an unlikely event there is a clog, alternate between load and unload to release a clog. This will create a suction effect so the clog is released.



### Lift Arm:

The lift arm lever will raise or lower the arm into the water.

**CAUTION:** Ensure the arm is moved slowly, as moving it too fast can stress the aluminum.



## Propellers:

There are 2 propellers on the SM401. Left and Right. Ensure both propellers are in the water when activating the levers.

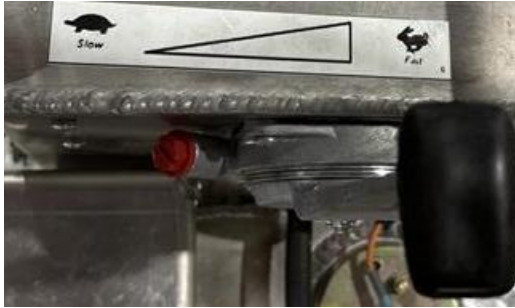
The propellers must be manually lowered into the water

- Pushing the lever controls both forward will navigate the harvester forward.
- Pulling both lever controls back will navigate the harvester backwards.
- Alternating the levers (left forward, right reverse, or vice versa), will help create a tighter turn.



## Engine Throttle

The engine throttle should be engaged at a higher speed when engaging the pump to the load or unload position. When the Pump Load/Unload is in neutral position, the throttle can be turned down, as the engine will be underutilized.



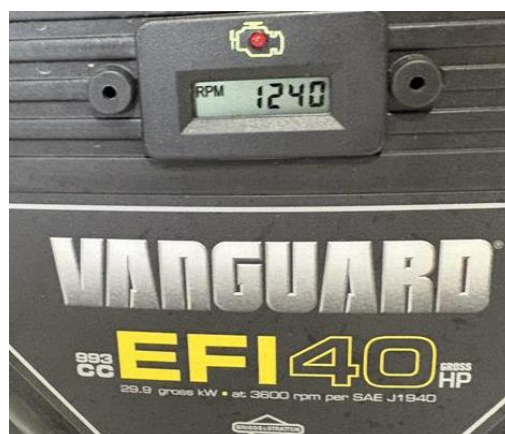
## Fuel Gauge:

The gauge to the left of the control panel shows the fuel level of the gas tank. Only use Premium Fuel, or fuel with no Ethanol



## Engine Hours/Engine RPM

The Engine hours are located on the engine block on a digital LED. See the maintenance section and the engine manual for service-related instructions.

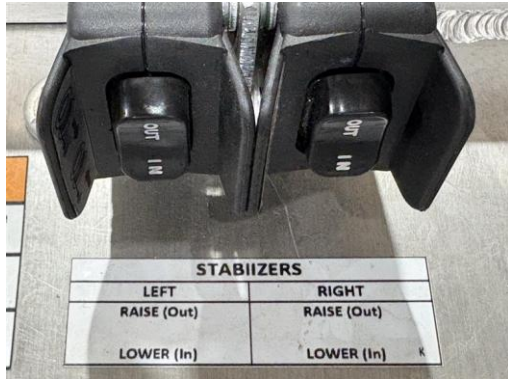




## Stabilizer Poles

There are 2 stabilizer poles on the SM401. One for each rear corner of the harvester. They help to ensure the harvesting pattern in the water is in a straight path. Press and hold the button to continually raise the pole.

- The Out button will raise the stabilizer pole
- The In button will lower the stabilizer pole



## Activating the Pump/Dredger Function

Before activating, ensure the hose is in the proper position desired on land.

**TIP:** Use a silt fence or erosion control sock to ensure debris does not go back into the water that the operating is clearing

1. Ensure the main arm is in position in the water to properly skim or dredge
2. Engage the throttle to medium or high
3. Push both levers forward slowly to the unload position to activate the pump, this will move pump the water and muck through the hose



## Deactivating the Pump/Dredger Function

1. Move the Load/Unload levers to the neutral position.
2. Turn down the engine throttle

## 6. Transporting the Harvester

- Trailer Operation:
  - See trailer manual.
- Safety before transport:
  - Ensure the harvester is secured to the trailer.
  - Checking trailer lights and brakes.
  - Weight limits and towing regulations.
  - Use zip ties to secure stabilizer pole straps to the poles
  - Ensure both propellers (2) are in the up position
  - Ensure the pump arm is lowered and is resting on the trailer
  - Ensure all weeds are removed from trailer and harvester
  - Move the strain relief arm to the driver or passenger side and secure it with the strap

## 7. Maintenance and Care

### Routine Maintenance

<b>Monthly Maintenance – Every 100 Hours</b>	
<b>Service Action Required</b>	<b>Service Reference</b>
Change engine oil and filter	Engine Manual
Clean or replace engine air filter	Engine Manual
Check Trailer Running Boards for Wear	Trailer Manual

<b>Winterization Maintenance – Yearly</b>	
<b>Service Action Required</b>	<b>Service Reference</b>
Change Hydraulic fluid	Hydraulic Oil Section
Check and Replace Spark Plugs	Engine Manual
Remove 2 harvester plugs	Located on the bottom of the hull
Add grease to trailer wheel bearings	Trailer Manual

## Hydraulic Oil

The hydraulic reservoir is located on the back left of the harvester.

**Only use Chevron Clarity Hydraulic Oil AW 32.**

Remove breather cap and use dip-stick (attached to breather cap) to fill to appropriate level.

The hydraulic oil should be changed every 500 hours, or annually.

Side view



Top View



## Troubleshooting:

Note: This Troubleshooting guide presents problems, causes, and suggested remedies beyond the extent of loose, worn or missing parts. It was developed with the understanding that the machine is in otherwise good operating condition. Refer to the index at the back of this manual for chapter and topic page references. For additional assistance, contact your SILVER MIST dealer.

<b>Electrical System</b>		
Problem	Cause	Remedy
Starter will not crank	Main Fuse Blown	Replace Fuse, Contact Silver Mist Dealer for assistance
	Battery and/or harness connections are loose or corroded	Check Wiring connections, clean and tighten as necessary
Battery will not charge	Battery electrolyte is low	Add distilled water to batter cells to replenish electrolyte level
	Battery and/or harness connections are loose or corroded	Check Wiring connections, clean and tighten as necessary
	Battery is dead	Replace battery

<b>Engine System</b>		
Problem	Cause	Remedy
Engine will not turn over	Main Fuse Blown	Replace Fuse, Contact Silver Mist Dealer for assistance
	Hydraulic control levers are not in neutral position	Move hydraulic control levers to neutral position
	Starter is faulty	Contact Silver Mist Dealer for replacement starter
Engine turns over, but will not start	Fuel Tank is empty	Refill fuel tank
	Ethanol has plugged carburetor	Remove and clean the carburetor. Replace as needed
	Fuel Pump is not functioning	Contact Silver Mist Dealer for assistance
	Hydraulic Levers are not in neutral position	Move hydraulic control levers to neutral position
Engine Overheats	Air filter is restricted	Replace or Clean air filter
	Engine is overloaded	Reduce load on engine, reduce hose length
	Engine oil is improper grade or excessively dirty	Drain and replace engine oil with proper grade

<b>Hydraulic System</b>		
Problem	Cause	Remedy
Load/Unload lever will not activate pump	Hydraulic fluid is empty	Add Chevron Clarity Hydraulic Oil AW 32
	Throttle is too low	Increase Throttle

## 8. Legal and Environmental Responsibilities

### Boating Laws

Review your state or country's boating and harvesting laws. Follow requirements for aquatic plant management permits (i.e. state DNR)

### Environmental Stewardship

Below are some best practices for minimizing ecological impact.

- Ensure proper disposal of harvested weeds or debris is completed according to state and local regulations
- Prevent the spread of invasive species by removing all debris before transporting

## 9. Appendices

- Reference Materials:
  - VanGuard Engine Operation Manual
  - Trailer Operation Manual
  - Silver Mist Aquatics website ([www.silvermistaquatics.com](http://www.silvermistaquatics.com)).

## 10. Support

- Support and Contact:
  - Contact Silver Mist Aquatics for assistance, training, or service.
  - Call (715) 281-5466 or visit [www.silvermistaquatics.com](http://www.silvermistaquatics.com).
- Feedback:
  - Operators are welcome share feedback or suggestions for improving the manual or equipment to Silver Mist or with your Silver Mist Dealer



## 11. Limited Warranty

Eco Harvester LLC warrants at no additional charge to the original purchaser each new SILVER MIST Aquatic Plant Harvester SM401 "Hull" for one (1) year to be free from defects in material and workmanship. The Engine is covered by the manufacturer's separate warranty. All other components are warranted for a period not to exceed ninety (90) consecutive days from the date of delivery to the original purchaser.

Genuine Eco Harvester SM401 replacement parts and components will be warranted for forty-five (45) days from the date of delivery.

This limited warranty will, under no circumstances, cover any components, which in the opinion of Eco Harvester, has been subject to misuse, unauthorized modification, alteration, and accident or if repairs have been made with parts other than those obtainable through Eco Harvester LLC.

Eco Harvester in no way warrants engines, batteries, or other trade accessories since these items are warranted separately by their respective manufacturers.

Eco Harvester's obligation under this limited warranty shall be limited to repairing or replacing, free of charge for the original purchaser, any part that, in Eco Harvester's judgment, shall show evidence of such a defect provided further that such a part, if so requested, shall be returned within thirty (30) days, from the date of failure, to Eco Harvester with transportation charges prepaid.

This limited warranty shall not render Eco Harvester liable for injury or damages of any kind or nature to any person or property. This limited warranty does not extend to the loss of crops, loss because of delay in harvesting, or any expense incurred for labor, substitute machinery, rental, or for any other reason.

Except as set forth above, Eco Harvester shall have no obligation of any kind on account of any of its equipment and shall not be liable for special or consequential damages. Eco Harvester makes no other warranty, expressed or implied, and, specifically, Eco Harvester disclaims any implied limited warranty or merchantability or fitness for a particular purpose. Some areas do not permit limitations or exclusions of implied warranties or incidental or consequential damages. If purchaser is in such a jurisdiction or wants additional warranty coverage it is the purchaser's due diligence to request such coverage so it can be line itemed as additional cost for the additional coverage.

The selling dealer makes no warranty of its own on any item covered by this limited warranty and makes no warranty on other items unless the dealer delivers to the purchaser a separate written warranty certificate specially warranting the item. The dealer has no authority to make any representations or promises on behalf of Eco-Harvester, or to modify the terms or limitations of this limited warranty in any way.

This contract is governed by Wisconsin State Law and any dispute shall be finally resolved in Wisconsin Courts. Should the occasion arise where a higher authority is required this contract will then be governed by courts and laws of the United States of America.

This warranty is subject to existing conditions of supply which may directly affect our ability to obtain materials of manufacture replacement parts.

Eco Harvester reserves the right to make improvements in design or changes in specifications at any time, without incurring any obligation to owners of units previously sold.

In the case of any legal dispute, the cost of Eco Harvester's attorney fees, costs and time cost of Eco-Harvester personnel in disputing case will be covered by the disputing party. No expenses can be transferred to Eco-Harvester or it's other customers.

No one is authorized to alter, modify, or enlarge either this limited warranty or its exclusions, limitations, and reservations.