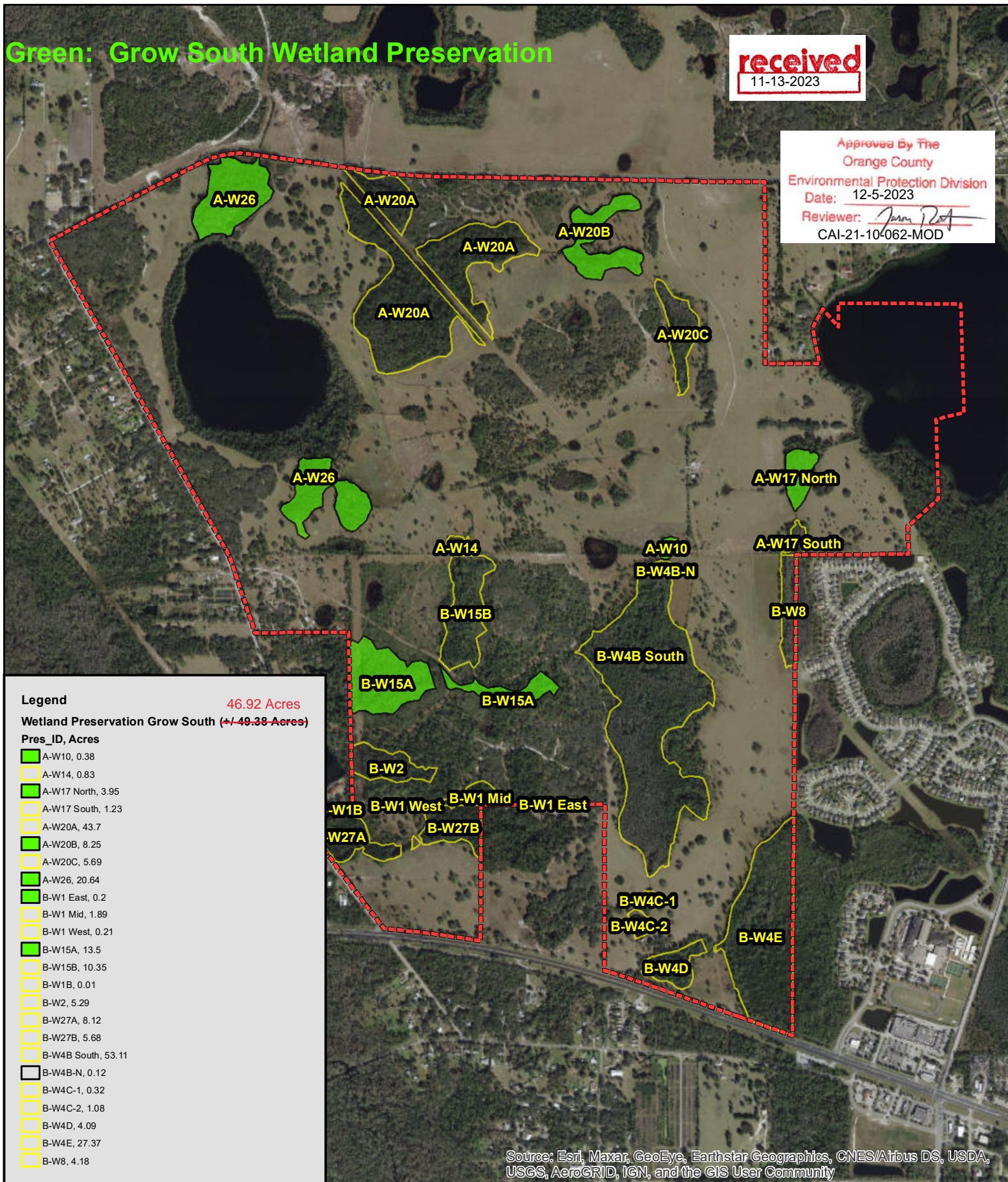


Nearmap.com Aerial - Flown Date: April 2020

Green: Grow South Wetland Preservation

**received**  
11-13-2023

Approved By The  
Orange County  
Environmental Protection Division  
Date: 12-5-2023  
Reviewer: *John P. [Signature]*  
CAI-21-10-062-MOD

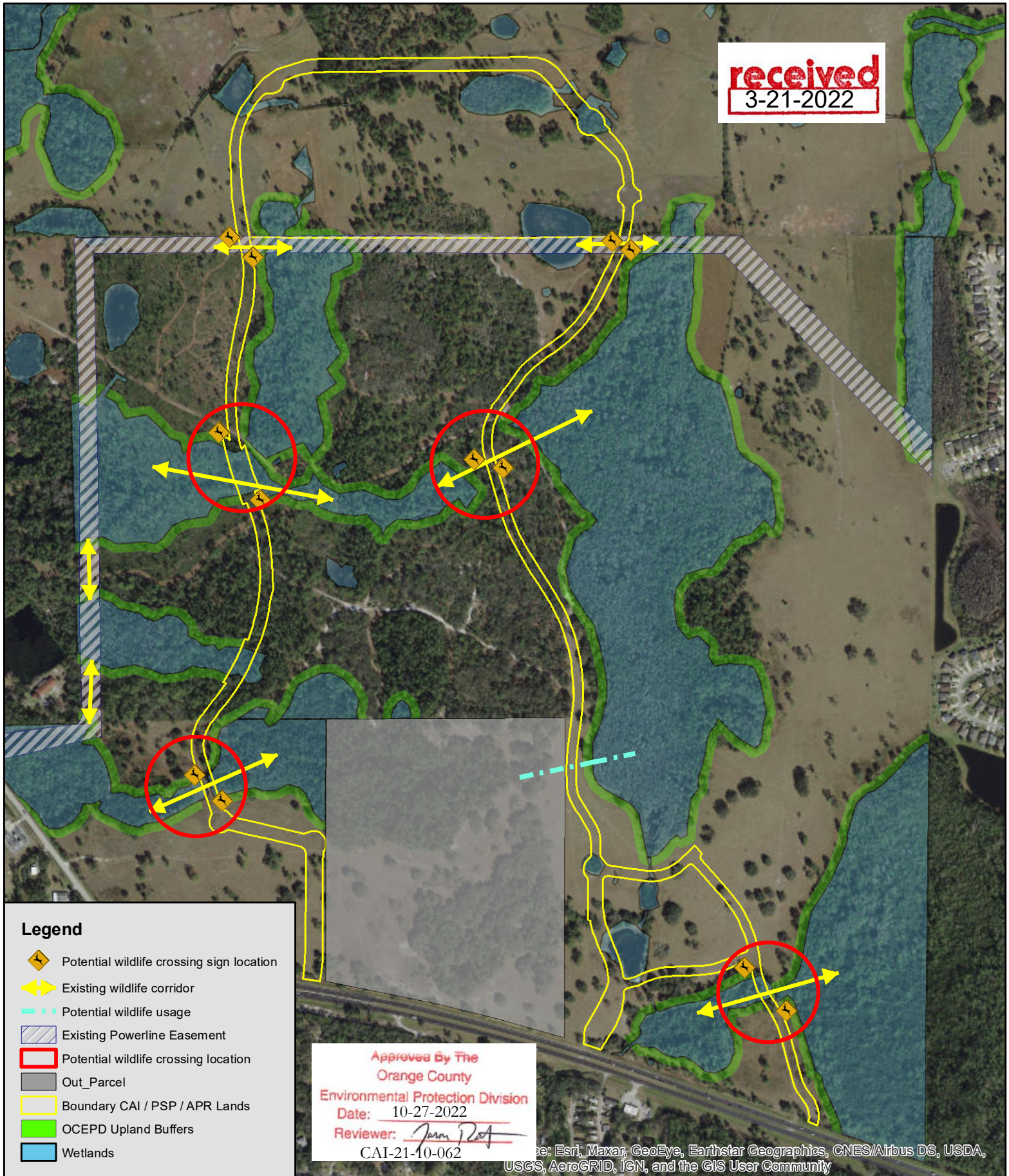


**Legend** 46.92 Acres  
**Wetland Preservation Grow South (+/- 48.38 Acres)**

Pres_ID	Acres
A-W10	0.38
A-W14	0.83
A-W17 North	3.95
A-W17 South	1.23
A-W20A	43.7
A-W20B	8.25
A-W20C	5.69
A-W26	20.64
B-W1 East	0.2
B-W1 Mid	1.89
B-W1 West	0.21
B-W15A	13.5
B-W15B	10.35
B-W1B	0.01
B-W2	5.29
B-W27A	8.12
B-W27B	5.68
B-W4B South	53.11
B-W4B-N	0.12
B-W4C-1	0.32
B-W4C-2	1.08
B-W4D	4.09
B-W4E	27.37
B-W8	4.18

Source: Esri, Maxar, GeoEye, Earthstar Geographics, CNES/Airbus DS, USDA, USGS, AeroGRID, IGN, and the GIS User Community

received  
3-21-2022



### Legend

- Potential wildlife crossing sign location
- Existing wildlife corridor
- Potential wildlife usage
- Existing Powerline Easement
- Potential wildlife crossing location
- Out\_Parcel
- Boundary CAI / PSP / APR Lands
- OCEPD Upland Buffers
- Wetlands

Approved By The  
Orange County  
Environmental Protection Division  
Date: 10-27-2022  
Reviewer: *Jenny Poff*  
CAI-21-10-062

Source: Esri, Maxar, GeoEye, Earthstar Geographics, CNES/Airbus DS, USDA, USGS, AeroGRID, IGN, and the GIS User Community

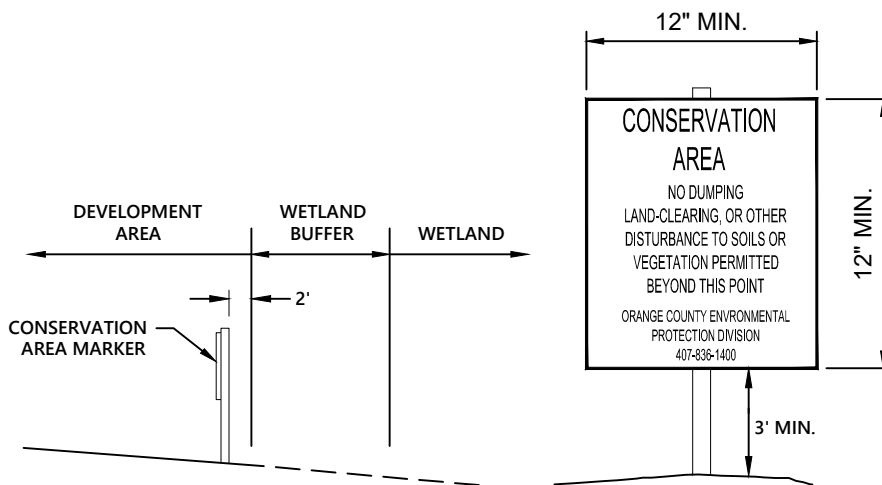


Approved By The  
Orange County  
Environmental Protection Division  
Date: 10-27-2022  
Reviewer: *Jean P. [Signature]*  
CAI-21-10-062

**received**  
2-7-2022

NOTES:

1. CONSERVATION AREAS SHALL BE CLEARLY MARKED WITH PERMANENT SIGNS STATING: "CONSERVATION AREA - NO DUMPING, LAND-CLEARING, OR OTHER DISTURBANCE TO SOILS OR VEGETATION PERMITTED BEYOND THIS POINT. ORANGE COUNTY ENVIRONMENTAL PROTECTION DIVISION 407-836-1400." THESE SIGNS SHALL BE LOCATED NO FARTHER THAN 150 FEET APART IN COMMON AREAS ON THE LANDWARD EDGE OF THE BUFFER (NOT IN THE BUFFER), AND ON EVERY OTHER INDIVIDUAL LOT LINE FOR RESIDENTIAL PROPERTIES, OR AS SPECIFIED WITHIN AN APPROVED ORANGE COUNTY CONSERVATION AREA IMPACT (CAI) PERMIT. PROVIDE A TYPICAL SIGN SHOWING THE DIMENSIONS OF THE SIGN AT 12 BY 12 INCHES MINIMUM AND AT LEAST 24 INCHES ABOVE GRADE.



## Typical Conservation Marker Detail

N.T.S.

**The Grow South CAI-21-10-062 -MOD**  
**Maintenance – Monitoring Plan**

**Mitigation Plan**

46.92

The mitigation plan proposes to preserve ~~49.38~~ acres of forested on-site wetlands, and associated 50-foot upland buffers, with frequent nuisance and exotic species management in perpetuity and purchase 0.59 credits from the TM Econ Mitigation bank. The on-site mitigation area will be placed within a conservation easement dedicated to the County. Management of the Mitigation Area will be limited to nuisance and exotic species control through herbicide application.

**Monitoring Plan**

The wetland preservation areas will be quantitatively monitored for a period of three (3) years. The monitoring events will occur on a semi-annual basis for the entire monitoring period. A baseline monitoring report and three (3) annual reports will be submitted to the County.

Permanent monitoring transects will be established throughout the wetland preservation areas and utilized for the collection of sampling data. Each transect will be 100 feet in length have two (2) monitoring stations. Monitoring stations will include a quantitative assessment of vegetation within a 50-foot radius of each monitoring station. At the ends of each transect, photo stations will be established to provide photographic documentation of the preservation areas. A GPS point will be recorded at each photo station and shown on an exhibit. Data collected from these monitoring stations will include a vegetative species listing with wetland status, estimated percent coverage of species, wildlife utilization, and a description of any problems encountered during the evaluation and proposed solutions.

**Maintenance Plan**

During the three (3) year monitoring period, maintenance events to control nuisance and exotic vegetation will occur on a quarterly basis. Maintenance events will be conducted to ensure that the conservation areas are free from invasive exotic vegetation (as defined by the Florida exotic pest plant council) immediately following a maintenance activity and shall constitute no more than 5% of vegetative cover between maintenance activities. Nuisance plant species shall constitute no more than 10% of total cover.

Approved By The  
Orange County  
Environmental Protection Division  
Date: 10-27-2022  
Reviewer:   
CAI-21-10-062



Following the three (3) year monitoring program, a perpetual maintenance plan is proposed for the preserved wetland. A maintenance program shall be implemented for the preserved wetland on a regular basis to ensure the integrity and viability of the conservation areas as permitted. Maintenance shall be conducted in perpetuity to ensure that the conservation areas are free from invasive exotic vegetation (as defined by the Florida exotic pest plant council at the date of permit issuance) immediately following a maintenance activity and shall constitute no more than 5% of vegetative cover between maintenance activities. Nuisance plant species shall constitute no more than 10% of total cover.

### **Mitigation Success**

To demonstrate that the mitigation is successful, the following criteria must be maintained.

- 1) 85% coverage by appropriate wetland species.
- 2) Coverage of exotic species shall not exceed 5%.