

## **Available Cloths for Ordering Custom Wallscrolls**

# Takeya Machi Shinkinran Ichimonji

## 竹屋町新金襴

The Takeya Machi cloth is named after a specific neighborhood in Kyoto where these Arabesque patterns were developed and manufactured onto silks in Japan. They are very traditional designs and patterns.

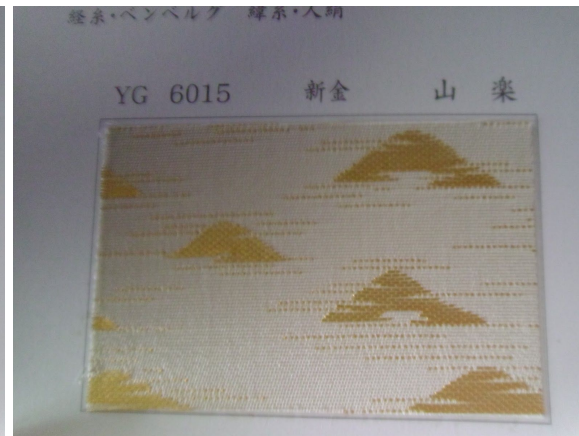


These cloths work well for the Middle section of Photo scrolls or the Ichimonji border on traditional styled scrolls. **YG 6001** is an off white background with a rich gold arabesque. **YG 6003** is a green background with gold and **YG 6004** is a rust brown background with gold.

# Shinkinran Ichimonji

## 新金欄一文字

Shinkinran is a cloth that has gold filament thread interwoven into the cloth. It is good for use as the border or middle section of a scroll.





# Shinkinran Chuumawashi

## 新金欄中廻

These cloths are used primarily for the middle section of a scroll.



**YG6031** has a pale green brown background with a muted gold arabesque.

**YG6032** has a clay gray background with a stronger gold flower arabesque.

**YG6034** has a blue background with a gold flower arabesque.

# Ryomen Kinran

## 両面金襴

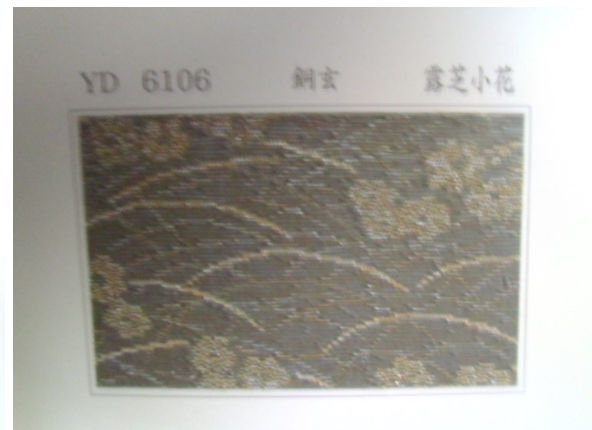
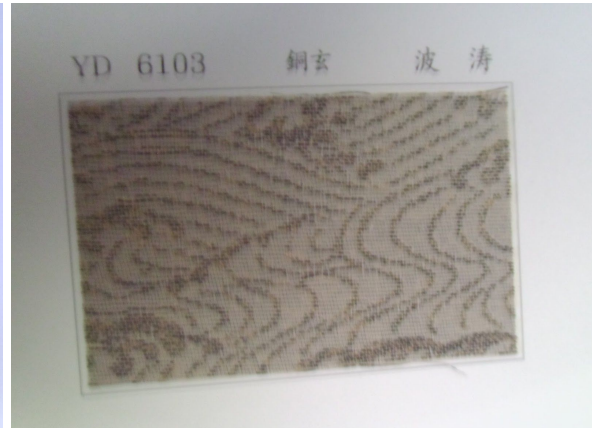
**YG6071** has a khaki background with a gold leaf pattern arabesque.



# Dougenretsu

## 銅玄裂

These are partial silks with a weave called Benberugu in Japanese.



**YD6102** is a tan cloth with a Large Manji and Circle pattern.

**YD6103** is a silver cloth with a wave pattern.

**YD6105** is a gold cloth with a Small Manji and Flower arabesque.

**YD6105** is a pale gray background with a grass and flower pattern.



# Hakujin Kifune Donsu

## 箔人貴船緞子

A benberugu style cloth with a gilted foil thread.



**YH6123** is a Dark Navy cloth with a Large Flower arabesque.

**YH6125** is a gold green background with a Large Flower arabesque.

**YH6127** is a brown background with a small flower and ivy arabesque.

# Donsu

## 緞子

Pure silk cloth.



**YF6176** is a gold cloth with a large vine arabesque.



# Donsu

## 貴船緞子

A Benberugu style cloth that is partial silk.



**YK6210** is a silver cloth with a spring grass and leaf motif.

**YK6217** is a gold cloth with a light gold flower and leaf arabesque.

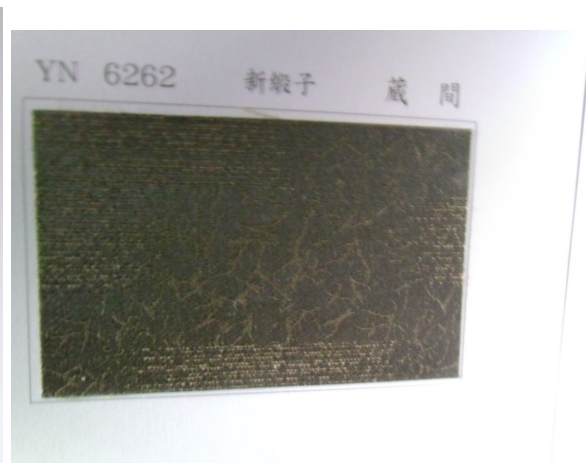
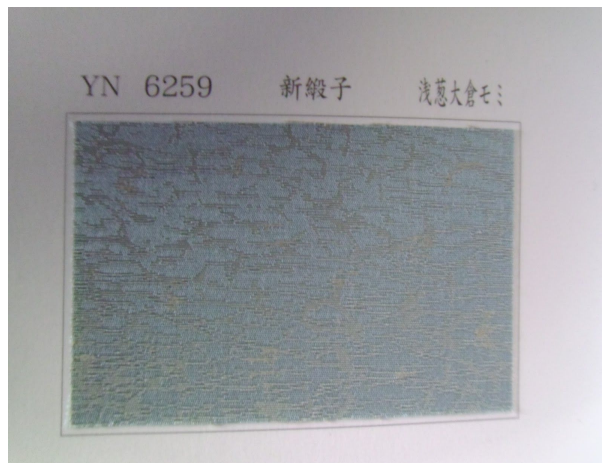
**YK6220** is a brown cloth with large gold circle patterns that vary throughout.

**YK6223** is a tan cloth with a Japanese maple leaf pattern.

# Shin Donsu

## 新緞子

A new style Benberugu cloth with a cotton weave.



**YN6254** is a dark navy cloth with a medium size flower gold arabesque.

**YN6258** is a dark brown background with large size flower gold arabesque.

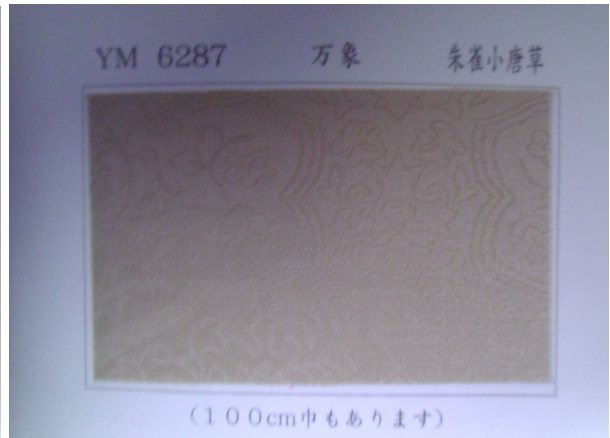
**YN6259** is a light blue cloth with a white momi (crackle style) pattern.

**YN6262** is an almost black background with a momi pattern.

# Manzouretsu

## 万象列

These are a mixed silk cloth. (Benberugu)



**YM6282** is a teal cloth with a faint pattern in the background.

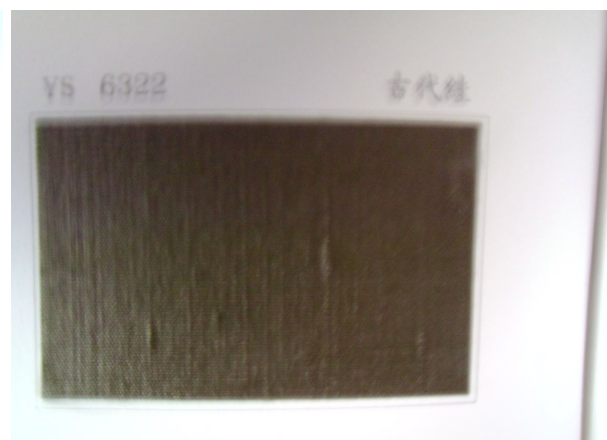
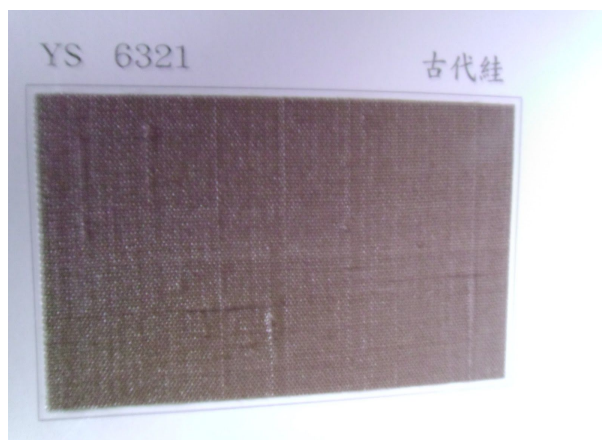
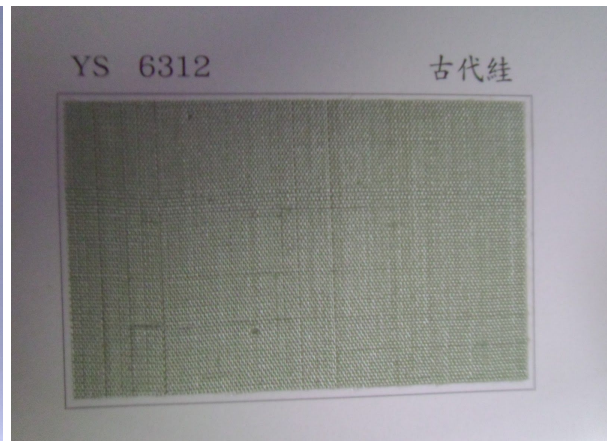
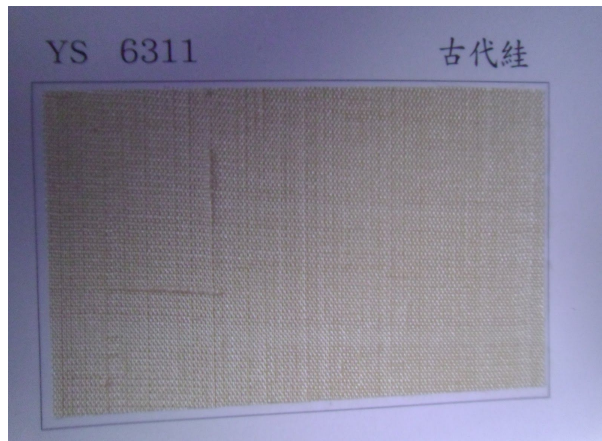
**YM6287** is a tan cloth with a faint pattern in the background.



# Kodai Shike

## 古代シケ

These are pure silk cloths with a raised weave throughout the cloth giving a feel of wabi sabi to the feel of the scroll.



**YS6311** is a light tan/wheat color cloth.

**YS6312** is a light green color cloth.

**YS6321** is a medium brown color cloth.

**YS6322** is a dark brown color cloth.

# Hichou Shoku

## 飛鳥織

The flying bird weave. These cloths are made of acetate and rayon. It is hard to distinguish them from silk.





