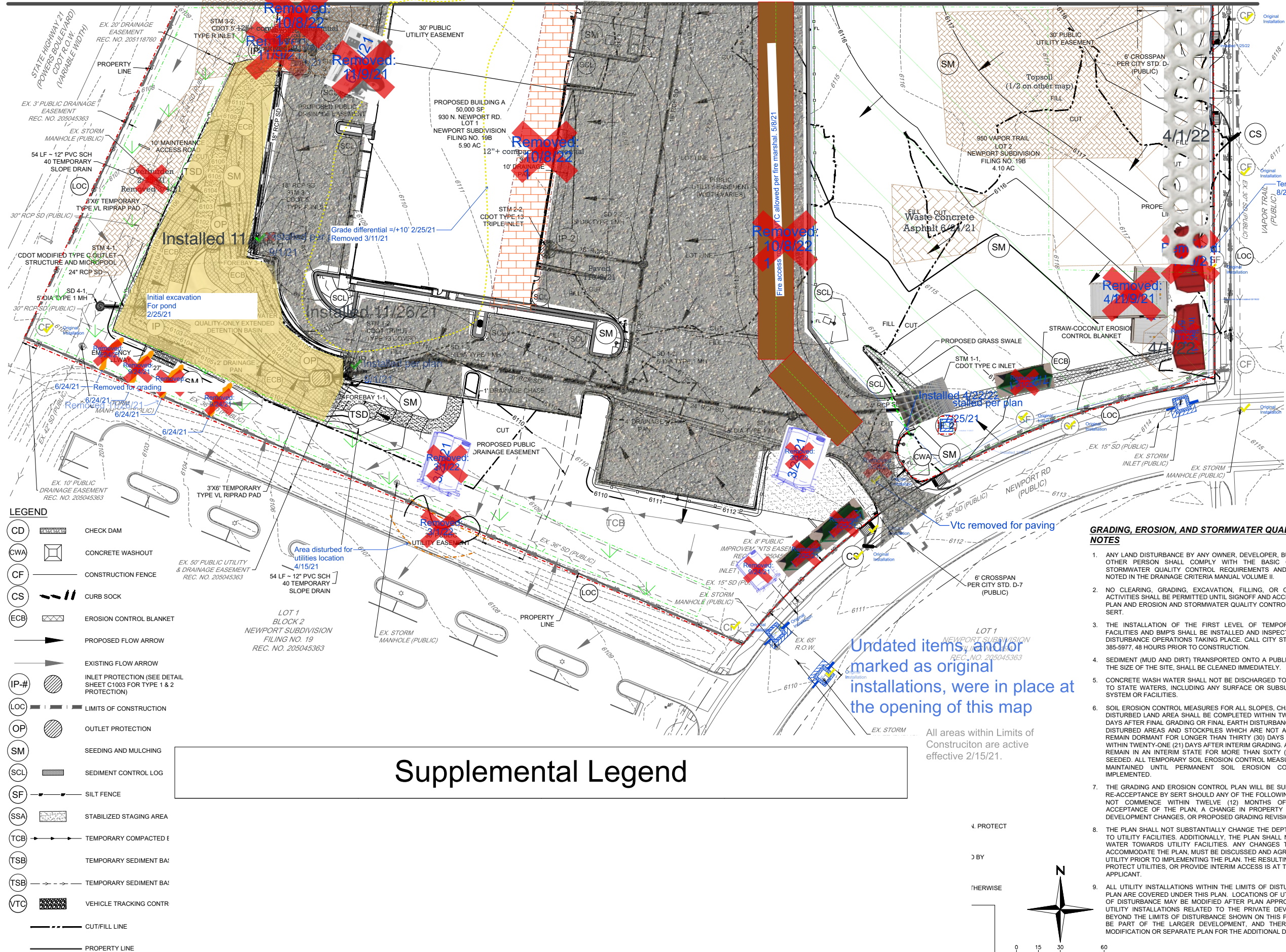


1/20/2020 14:44 Carrier West Vapor Trail CAD/Sheet Set/CD/20014 - Final Erosion Control Plan - SOUTH Dec 22, 2019 - 1:50pm bjbmk

MATCHLINE - SEE SHEET NO. C403



LEGEND

- | | |
|------|---|
| CD | CHECK DAM |
| CWA | CONCRETE WASHOUT |
| CF | CONSTRUCTION FENCE |
| CS | CURB SOCK |
| ECB | EROSION CONTROL BLANKET |
| IP-# | INLET PROTECTION (SEE DETAIL SHEET C1003 FOR TYPE 1 & 2 PROTECTION) |
| LOC | LIMITS OF CONSTRUCTION |
| OP | OUTLET PROTECTION |
| SM | SEEDING AND MULCHING |
| SCL | SEDIMENT CONTROL LOG |
| SF | SILT FENCE |
| SSA | STABILIZED STAGING AREA |
| TCB | TEMPORARY COMPACTED E |
| TSB | TEMPORARY SEDIMENT BA: |
| TSB | TEMPORARY SEDIMENT BA: |
| VTC | VEHICLE TRACKING CONTR |
| --- | CUT/FILL LINE |
| --- | PROPERTY LINE |

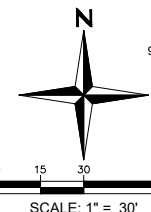
Supplemental Legend

Undated items, and/or marked as original installations, were in place at the opening of this map

All areas within Limits of Construction are active effective 2/15/21.

PROTECT
BY
THERWISE

CE)



GRADING, EROSION, AND STORMWATER QUALITY CONTROL NOTES

- ANY LAND DISTURBANCE BY ANY OWNER, DEVELOPER, BUILDER, CONTRACTOR, OR OTHER PERSON SHALL COMPLY WITH THE BASIC GRADING, EROSION AND STORMWATER QUALITY CONTROL REQUIREMENTS AND GENERAL PROHIBITIONS NOTED IN THE DRAINAGE CRITERIA MANUAL VOLUME II.
- NO CLEARING, GRADING, EXCAVATION, FILLING, OR OTHER LAND DISTURBING ACTIVITIES SHALL BE PERMITTED UNTIL SIGNOFF AND ACCEPTANCE OF THE GRADING PLAN AND EROSION AND STORMWATER QUALITY CONTROL PLAN IS RECEIVED FROM SERT.
- THE INSTALLATION OF THE FIRST LEVEL OF TEMPORARY EROSION CONTROL FACILITIES AND BMP'S SHALL BE INSTALLED AND INSPECTED PRIOR TO ANY EARTH DISTURBANCE OPERATIONS TAKING PLACE. CALL CITY STORMWATER INSPECTIONS, 385-5977, 48 HOURS PRIOR TO CONSTRUCTION.
- SEDIMENT (MUD AND DIRT) TRANSPORTED ONTO A PUBLIC ROAD, REGARDLESS OF THE SIZE OF THE SITE, SHALL BE CLEANED IMMEDIATELY.
- CONCRETE WASH WATER SHALL NOT BE DISCHARGED TO OR ALLOWED TO RUNOFF TO STATE WATERS, INCLUDING ANY SURFACE OR SUBSURFACE STORM DRAINAGE SYSTEM OR FACILITIES.
- SOIL EROSION CONTROL MEASURES FOR ALL SLOPES, CHANNELS, DITCHES, OR ANY DISTURBED LAND AREA SHALL BE COMPLETED WITHIN TWENTY-ONE (21) CALENDAR DAYS AFTER FINAL GRADING OR FINAL EARTH DISTURBANCE HAS BEEN COMPLETED. DISTURBED AREAS AND STOCKPILES WHICH ARE NOT AT FINAL GRADE BUT WILL REMAIN DORMANT FOR LONGER THAN THIRTY (30) DAYS SHALL ALSO BE MULCHED WITHIN TWENTY-ONE (21) DAYS AFTER INTERIM GRADING. AN AREA THAT IS GOING TO REMAIN IN AN INTERIM STATE FOR MORE THAN SIXTY (60) DAYS SHALL ALSO BE SEEDED. ALL TEMPORARY SOIL EROSION CONTROL MEASURES AND BMP'S SHALL BE MAINTAINED UNTIL PERMANENT SOIL EROSION CONTROL MEASURES ARE IMPLEMENTED.
- THE GRADING AND EROSION CONTROL PLAN WILL BE SUBJECT TO RE-REVIEW AND RE-ACCEPTANCE BY SERT SHOULD ANY OF THE FOLLOWING OCCUR: GRADING DOES NOT COMMENCE WITHIN TWELVE (12) MONTHS OF THE CITY ENGINEER'S ACCEPTANCE OF THE PLAN, A CHANGE IN PROPERTY OWNERSHIP, PROPOSED DEVELOPMENT CHANGES, OR PROPOSED GRADING REVISIONS.
- THE PLAN SHALL NOT SUBSTANTIALLY CHANGE THE DEPTH OF COVER, OR ACCESS TO UTILITY FACILITIES. ADDITIONALLY, THE PLAN SHALL NOT INCREASE OR DIVERT WATER TOWARDS UTILITY FACILITIES. ANY CHANGES TO UTILITY FACILITIES TO ACCOMMODATE THE PLAN, MUST BE DISCUSSED AND AGREED TO BY THE AFFECTED UTILITY PRIOR TO IMPLEMENTING THE PLAN. THE RESULTING COST TO RELOCATE OR PROTECT UTILITIES, OR PROVIDE INTERIM ACCESS IS AT THE EXPENSE OF THE PLAN APPLICANT.
- ALL UTILITY INSTALLATIONS WITHIN THE LIMITS OF DISTURBANCE SHOWN ON THIS PLAN ARE COVERED UNDER THIS PLAN. LOCATIONS OF UTILITIES WITHIN THE LIMITS OF DISTURBANCE MAY BE MODIFIED AFTER PLAN APPROVAL AS A FIELD CHANGE. UTILITY INSTALLATIONS RELATED TO THE PRIVATE DEVELOPMENT THAT EXTEND BEYOND THE LIMITS OF DISTURBANCE SHOWN ON THIS PLAN ARE CONSIDERED TO BE PART OF THE LARGER DEVELOPMENT, AND THEREFORE REQUIRE A PLAN MODIFICATION OR SEPARATE PLAN FOR THE ADDITIONAL DISTURBANCE AREA.

DRAWN	ML
CHECKED	MDC
APPROVED	MDC
PROJECT NO.	2004
HORIZ. SCALE	1" = 30'
VERT. SCALE	NA

DATE	NO.	NOTES
11/02/2020	1	1ST SUBMITTAL TO CITY OF COLORADO SPRINGS
12/07/2020	2	2ND SUBMITTAL TO CITY OF COLORADO SPRINGS
12/14/2020	3	ADDITIONAL 3
2/2/21	4	Map opened / work began