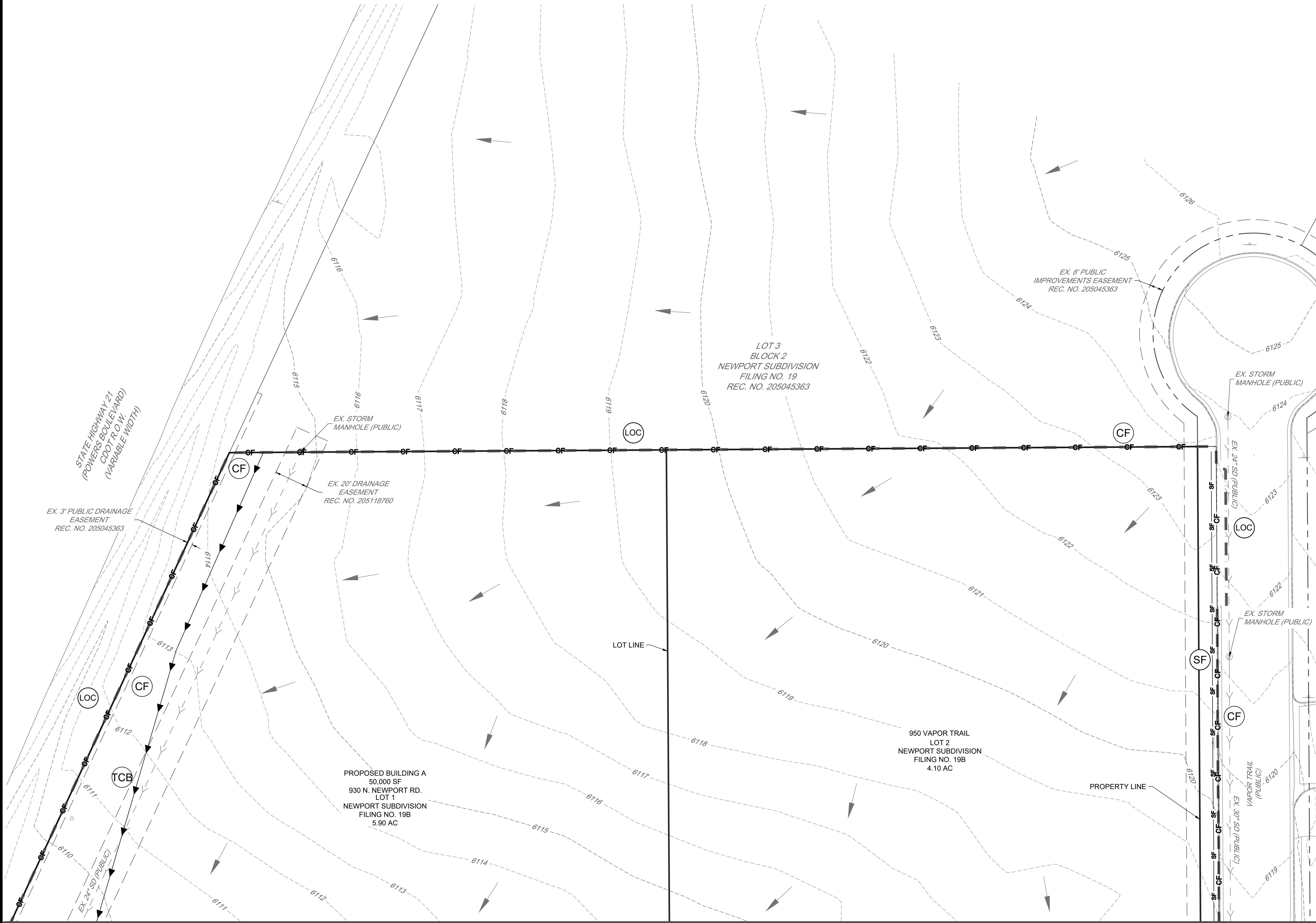


I:\2020\2014 - Carrier West 950 Vapor Trail\CADD\Sheet\Sheets\CD\2014 - Initial Erosion Control Plan.dwg Job: C401 INITIAL GRADING AND EROSION CONTROL PLAN - NORTH Dec 22, 2020 - 1:50pm bjphk



- LEGEND
- CWA CONCRETE WASHOUT
 - CF CONSTRUCTION FENCE
 - CS CURB SOCK
 - ECB EROSION CONTROL BLANKET
 - EXISTING FLOW ARROW
 - LOC LIMITS OF CONSTRUCTION
 - SF SILT FENCE
 - SSA STABILIZED STAGING AREA
 - TCB TEMPORARY COMPACTED BERM
 - TSB TEMPORARY SEDIMENT BASIN
 - VTC VEHICLE TRACKING CONTROL
 - PROPERTY BOUNDARY

GRADING, EROSION, AND STORMWATER QUALITY CONTROL NOTES

- ANY LAND DISTURBANCE BY ANY OWNER, DEVELOPER, BUILDER, CONTRACTOR, OR OTHER PERSON SHALL COMPLY WITH THE BASIC GRADING, EROSION AND STORMWATER QUALITY CONTROL REQUIREMENTS AND GENERAL PROHIBITIONS NOTED IN THE DRAINAGE CRITERIA MANUAL VOLUME II.
- NO CLEARING, GRADING, EXCAVATION, FILLING, OR OTHER LAND DISTURBING ACTIVITIES SHALL BE PERMITTED UNTIL SIGNOFF AND ACCEPTANCE OF THE GRADING PLAN AND EROSION AND STORMWATER QUALITY CONTROL PLAN IS RECEIVED FROM SERT.
- THE INSTALLATION OF THE FIRST LEVEL OF TEMPORARY EROSION CONTROL FACILITIES AND BMP'S SHALL BE INSTALLED AND INSPECTED PRIOR TO ANY EARTH DISTURBANCE OPERATIONS TAKING PLACE. CALL CITY STORMWATER INSPECTIONS, 385-5977, 48 HOURS PRIOR TO CONSTRUCTION.
- SEDIMENT (MUD AND DIRT) TRANSPORTED ONTO A PUBLIC ROAD, REGARDLESS OF THE SIZE OF THE SITE, SHALL BE CLEANED IMMEDIATELY.
- CONCRETE WASH WATER SHALL NOT BE DISCHARGED TO OR ALLOWED TO RUNOFF TO STATE WATERS, INCLUDING ANY SURFACE OR SUBSURFACE STORM DRAINAGE SYSTEM OR FACILITIES.
- SOIL EROSION CONTROL MEASURES FOR ALL SLOPES, CHANNELS, DITCHES, OR ANY DISTURBED LAND AREA SHALL BE COMPLETED WITHIN TWENTY-ONE (21) CALENDAR DAYS AFTER FINAL GRADING OR FINAL EARTH DISTURBANCE HAS BEEN COMPLETED. DISTURBED AREAS AND STOCKPILES WHICH ARE NOT AT FINAL GRADE BUT WILL REMAIN DORMANT FOR LONGER THAN THIRTY (30) DAYS SHALL ALSO BE MULCHED WITHIN TWENTY-ONE (21) DAYS AFTER INTERIM GRADING. AN AREA THAT IS GOING TO REMAIN IN AN INTERIM STATE FOR MORE THAN SIXTY (60) DAYS SHALL ALSO BE SEEDED. ALL TEMPORARY SOIL EROSION CONTROL MEASURES AND BMP'S SHALL BE MAINTAINED UNTIL PERMANENT SOIL EROSION CONTROL MEASURES ARE IMPLEMENTED.
- THE GRADING AND EROSION CONTROL PLAN WILL BE SUBJECT TO RE-REVIEW AND RE-ACCEPTANCE BY SERT SHOULD ANY OF THE FOLLOWING OCCUR: GRADING DOES NOT COMMENCE WITHIN TWELVE (12) MONTHS OF THE CITY ENGINEER'S ACCEPTANCE OF THE PLAN, A CHANGE IN PROPERTY OWNERSHIP, PROPOSED DEVELOPMENT CHANGES, OR PROPOSED GRADING REVISIONS.
- THE PLAN SHALL NOT SUBSTANTIALLY CHANGE THE DEPTH OF COVER, OR ACCESS TO UTILITY FACILITIES. ADDITIONALLY, THE PLAN SHALL NOT INCREASE OR DIVERT WATER TOWARDS UTILITY FACILITIES. ANY CHANGES TO UTILITY FACILITIES TO ACCOMMODATE THE PLAN, MUST BE DISCUSSED AND AGREED TO BY THE AFFECTED UTILITY PRIOR TO IMPLEMENTING THE PLAN. THE RESULTING COST TO RELOCATE OR PROTECT UTILITIES, OR PROVIDE INTERIM ACCESS IS AT THE EXPENSE OF THE PLAN APPLICANT.
- ALL UTILITY INSTALLATIONS WITHIN THE LIMITS OF DISTURBANCE SHOWN ON THIS PLAN ARE COVERED UNDER THIS PLAN. LOCATIONS OF UTILITIES WITHIN THE LIMITS OF DISTURBANCE MAY BE MODIFIED AFTER PLAN APPROVAL AS A FIELD CHANGE. UTILITY INSTALLATIONS RELATED TO THE PRIVATE DEVELOPMENT THAT EXTEND BEYOND THE LIMITS OF DISTURBANCE SHOWN ON THIS PLAN ARE CONSIDERED TO BE PART OF THE LARGER DEVELOPMENT, AND THEREFORE REQUIRE A PLAN MODIFICATION OR SEPARATE PLAN FOR THE ADDITIONAL DISTURBANCE AREA.

EARTHWORK QUANTITIES

CUT = 6,806 CY
FILL = 7,455 CY
NET = 634 CY IMPORT

SOIL TYPE: BLAKELAND LOAMY SAND & TRUCKTON LOAMY SAND

TIMING: START FEBRUARY 2021 WITH FINAL STABILIZATION IN NOVEMBER 2021
DISTURBED AREA: 9.19 AC.

RECEIVING WATERS: SAND CREEK (PETERSON DRAINAGE BASIN)

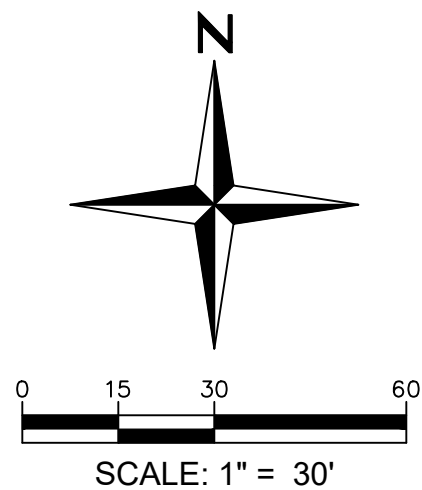
NOTES:

- CONTRACTOR TO DETERMINE FINAL STAGING AREA SIZE & LOCATION. PROTECT WITH APPLICABLE BMP'S.
- STOCKPILE AND TEMPORARY DISPOSAL AREAS WILL BE DETERMEIND BY CONTRACTOR.
- ALL PROPOSED DRAINAGE IMPROVEMENTS ARE PRIVATE UNLESS OTHERWISE NOTED.

STREET DESIGN FOR CITY ENGINEERING

UTILITY GRADE REVIEW	DATE
CURB & GUTTER REVIEW	DATE
FINAL REVIEW	DATE
DRAINAGE DESIGN	DATE

THIS IS FILED IN ACCORDANCE WITH SECTION 7.7.906 (DRAINAGE ORDINANCE) OF THE CODE OF THE CITY OF COLORADO SPRINGS, 2001 AS AMENDED.



LOT 1 ADDRESS: 930 NORTH NEWPORT ROAD
LOT 2 ADDRESS: 950 VAPOR TRAIL

CARRIER WEST VAPOR TRAIL - PHASE 1

INITIAL GRADING AND EROSION CONTROL PLAN - NORTH

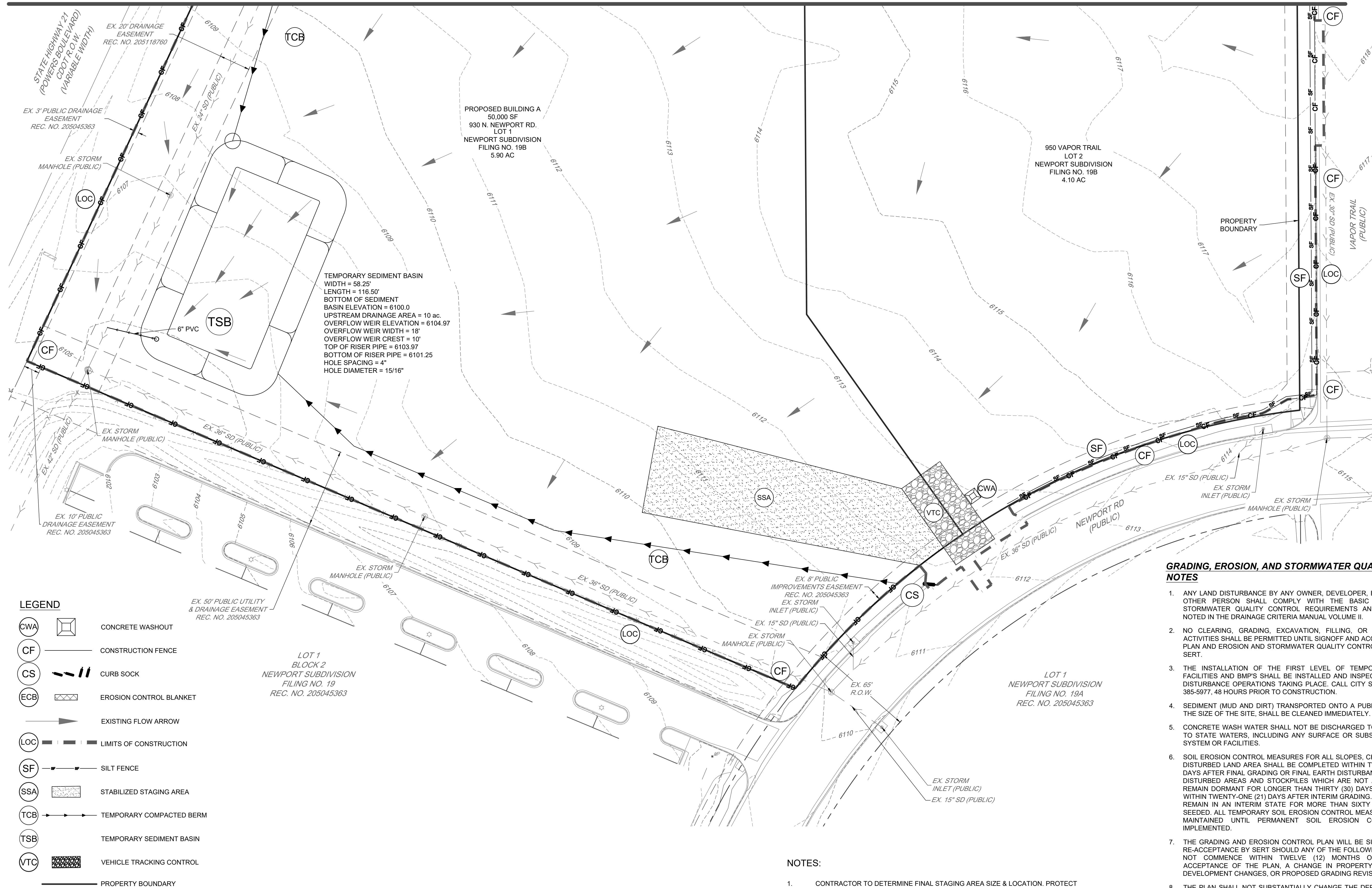
SHEET

C401

DRAWN	ML
CHECKED	MDC
APPROVED	MDC
PROJECT NO.	20014
HORIZ SCALE	1" = 30'
VERT SCALE	NA

DATE	NO.	NOTES
1/10/2020	1	1ST SUBMITTAL TO CITY OF COLORADO SPRINGS
12/07/2020	2	2ND SUBMITTAL TO CITY OF COLORADO SPRINGS
12/14/2020	3	ADDENDUM NO. 3

I:\2020\2014 - Carrier West Vapor Trail\CD\Sheet\CD\2014 - Initial Grading and Erosion Control Plan - South - 150gm.bplmk

**EARTHWORK QUANTITIES**CUT = 6,806 CY
FILL = 7,455 CY
NET = 634 CY IMPORTSOIL TYPE: BLAKELAND LOAMY SAND &
TRUCKTON LOAMY SANDTIMING: START FEBRUARY 2021 WITH FINAL
STABILIZATION IN NOVEMBER 2021
DISTURBED AREA: 9.19 AC.RECEIVING WATERS: SAND CREEK (PETERSON
DRAINAGE BASIN)**GRADING, EROSION, AND STORMWATER QUALITY CONTROL NOTES**

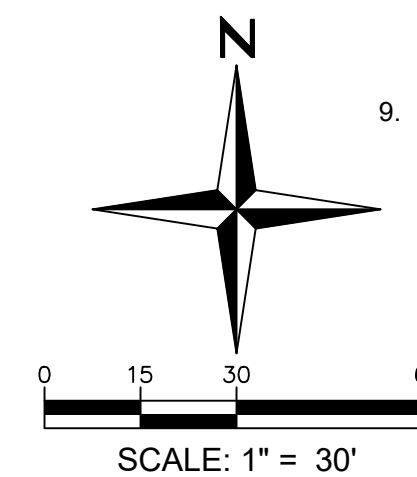
- ANY LAND DISTURBANCE BY ANY OWNER, DEVELOPER, BUILDER, CONTRACTOR, OR OTHER PERSON SHALL COMPLY WITH THE BASIC GRADING, EROSION AND STORMWATER QUALITY CONTROL REQUIREMENTS AND GENERAL PROHIBITIONS NOTED IN THE DRAINAGE CRITERIA MANUAL VOLUME II.
- NO CLEARING, GRADING, EXCAVATION, FILLING, OR OTHER LAND DISTURBING ACTIVITIES SHALL BE PERMITTED UNTIL SIGNOFF AND ACCEPTANCE OF THE GRADING PLAN AND EROSION AND STORMWATER QUALITY CONTROL PLAN IS RECEIVED FROM SERT.
- THE INSTALLATION OF THE FIRST LEVEL OF TEMPORARY EROSION CONTROL FACILITIES AND BMP'S SHALL BE INSTALLED AND INSPECTED PRIOR TO ANY EARTH DISTURBANCE OPERATIONS TAKING PLACE. CALL CITY STORMWATER INSPECTIONS, 385-5977, 48 HOURS PRIOR TO CONSTRUCTION.
- SEDIMENT (MUD AND DIRT) TRANSPORTED ONTO A PUBLIC ROAD, REGARDLESS OF THE SIZE OF THE SITE, SHALL BE CLEANED IMMEDIATELY.
- CONCRETE WASH WATER SHALL NOT BE DISCHARGED TO OR ALLOWED TO RUNOFF TO STATE WATERS, INCLUDING ANY SURFACE OR SUBSURFACE STORM DRAINAGE SYSTEM OR FACILITIES.
- SOIL EROSION CONTROL MEASURES FOR ALL SLOPES, CHANNELS, DITCHES, OR ANY DISTURBED LAND AREA SHALL BE COMPLETED WITHIN TWENTY-ONE (21) CALENDAR DAYS AFTER FINAL GRADING OR FINAL EARTH DISTURBANCE HAS BEEN COMPLETED. DISTURBED AREAS AND STOCKPILES WHICH ARE NOT AT FINAL GRADE BUT WILL REMAIN DORMANT FOR LONGER THAN THIRTY (30) DAYS SHALL ALSO BE MULCHED WITHIN TWENTY-ONE (21) DAYS AFTER INTERIM GRADING. AN AREA THAT IS GOING TO REMAIN IN AN INTERIM STATE FOR MORE THAN SIXTY (60) DAYS SHALL ALSO BE SEEDED. ALL TEMPORARY SOIL EROSION CONTROL MEASURES AND BMP'S SHALL BE MAINTAINED UNTIL PERMANENT SOIL EROSION CONTROL MEASURES ARE IMPLEMENTED.
- THE GRADING AND EROSION CONTROL PLAN WILL BE SUBJECT TO RE-REVIEW AND RE-ACCEPTANCE BY SERT SHOULD ANY OF THE FOLLOWING OCCUR: GRADING DOES NOT COMMENCE WITHIN TWELVE (12) MONTHS OF THE CITY ENGINEERS ACCEPTANCE OF THE PLAN, A CHANGE IN PROPERTY OWNERSHIP, PROPOSED DEVELOPMENT CHANGES, OR PROPOSED GRADING REVISIONS.
- THE PLAN SHALL NOT SUBSTANTIALLY CHANGE THE DEPTH OF COVER, OR ACCESS TO UTILITY FACILITIES. ADDITIONALLY, THE PLAN SHALL NOT INCREASE OR DIVERT WATER TOWARDS UTILITY FACILITIES. ANY CHANGES TO UTILITY FACILITIES TO ACCOMMODATE THE PLAN, MUST BE DISCUSSED AND AGREED TO BY THE AFFECTED UTILITY PRIOR TO IMPLEMENTING THE PLAN. THE RESULTING COST TO RELOCATE OR PROTECT UTILITIES, OR PROVIDE INTERIM ACCESS IS AT THE EXPENSE OF THE PLAN APPLICANT.
- ALL UTILITY INSTALLATIONS WITHIN THE LIMITS OF DISTURBANCE SHOWN ON THIS PLAN ARE COVERED UNDER THIS PLAN. LOCATIONS OF UTILITIES WITHIN THE LIMITS OF DISTURBANCE MAY BE MODIFIED AFTER PLAN APPROVAL AS A FIELD CHANGE. UTILITY INSTALLATIONS RELATED TO THE PRIVATE DEVELOPMENT THAT EXTEND BEYOND THE LIMITS OF DISTURBANCE SHOWN ON THIS PLAN ARE CONSIDERED TO BE PART OF THE LARGER DEVELOPMENT, AND THEREFORE REQUIRE A PLAN MODIFICATION OR SEPARATE PLAN FOR THE ADDITIONAL DISTURBANCE AREA.

NOTES:

- CONTRACTOR TO DETERMINE FINAL STAGING AREA SIZE & LOCATION. PROTECT WITH APPLICABLE BMP'S.
- STOCKPILE AND TEMPORARY DISPOSAL AREAS WILL BE DETERMEIND BY CONTRACTOR.
- ALL PROPOSED DRAINAGE IMPROVEMENTS ARE PRIVATE UNLESS OTHERWISE NOTED.

STREET DESIGN FOR CITY ENGINEERING

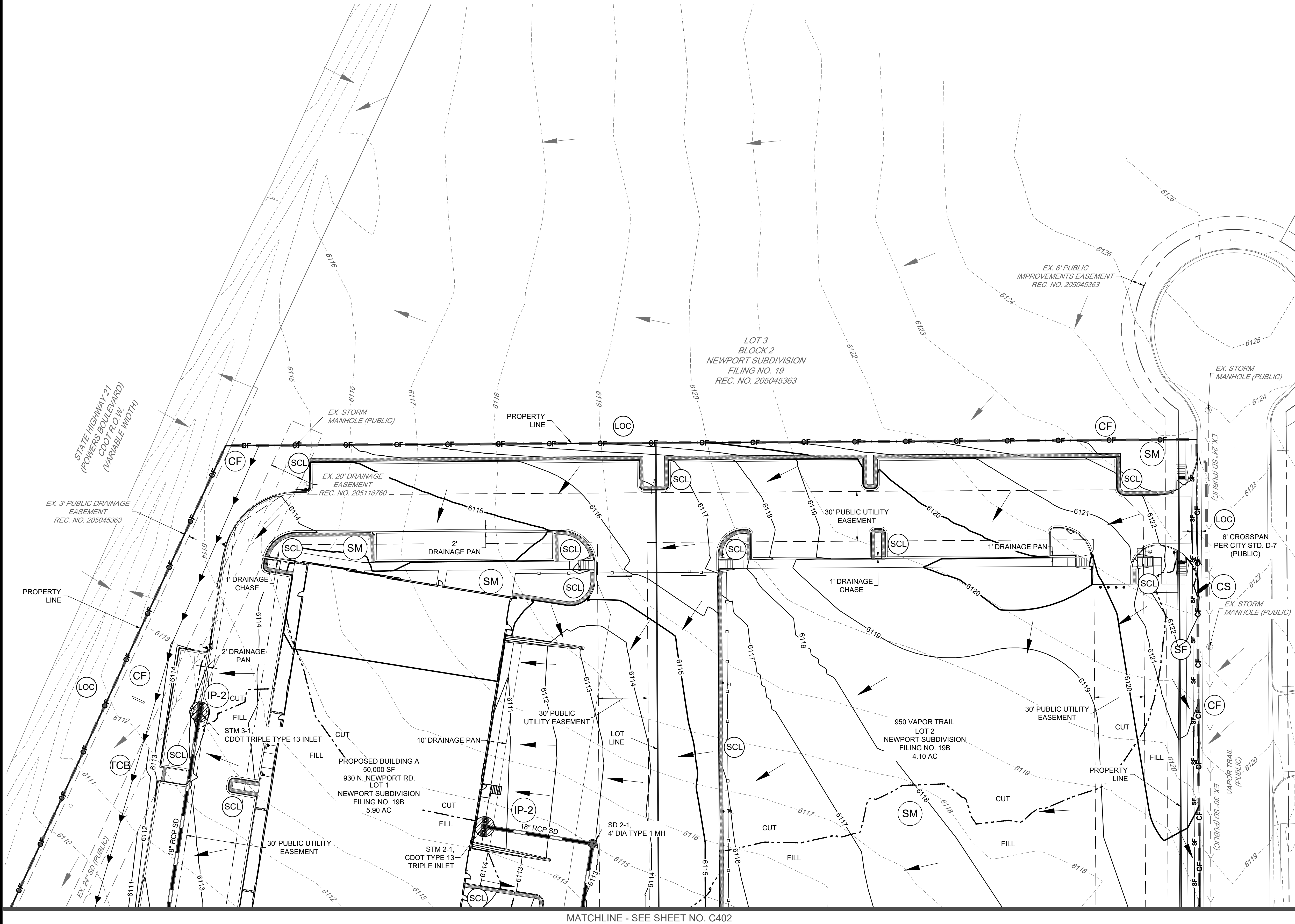
UTILITY GRADE REVIEW	DATE
CURB & GUTTER REVIEW	DATE
FINAL REVIEW	DATE
DRAINAGE DESIGN	DATE

THIS IS FILED IN ACCORDANCE WITH SECTION 7.7.906 (DRAINAGE ORDINANCE)
OF THE CODE OF THE CITY OF COLORADO SPRINGS, 2001 AS AMENDED.LOT 1 ADDRESS: 930 NORTH NEWPORT ROAD
LOT 2 ADDRESS: 950 VAPOR TRAIL**CARRIER WEST VAPOR TRAIL - PHASE 1****INITIAL GRADING AND EROSION CONTROL PLAN - SOUTH**

SHEET

C402

I:\2020\2014 - Carrier West 950 Vapor Trail\CADD\Sheet\Sheets\CD\2014 - Final Erosion Control Plan.dwg Job: C403 Final Grading and Erosion Control Plan - NORTH Date: 2020-11-05pm jglnk



MATCHLINE - SEE SHEET NO. C402

EARTHWORK QUANTITIES

CUT = 6,806 CY
FILL = 7,455 CY
NET = 634 CY IMPORT

SOIL TYPE: BLAKELAND LOAMY SAND & TRUCKTON LOAMY SAND

TIMING: START FEBRUARY 2021 WITH FINAL STABILIZATION IN NOVEMBER 2021
DISTURBED AREA: 9.19 AC.

RECEIVING WATERS: SAND CREEK (PETERSON DRAINAGE BASIN)

NOTES:

- CONTRACTOR TO DETERMINE FINAL STAGING AREA SIZE & LOCATION. PROTECT WITH APPLICABLE BMPs.
- STOCKPILE AND TEMPORARY DISPOSAL AREAS WILL BE DETERMEIND BY CONTRACTOR.
- ALL PROPOSED DRAINAGE IMPROVEMENTS ARE PRIVATE UNLESS OTHERWISE NOTED.

STREET DESIGN FOR CITY ENGINEERING

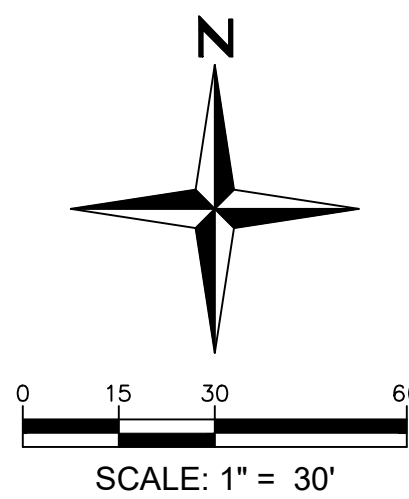
UTILITY GRADE REVIEW	DATE
CURB & GUTTER REVIEW	DATE
FINAL REVIEW	DATE
DRAINAGE DESIGN	DATE

THIS IS FILED IN ACCORDANCE WITH SECTION 7.7.906 (DRAINAGE ORDINANCE) OF THE CODE OF THE CITY OF COLORADO SPRINGS, 2001 AS AMENDED.

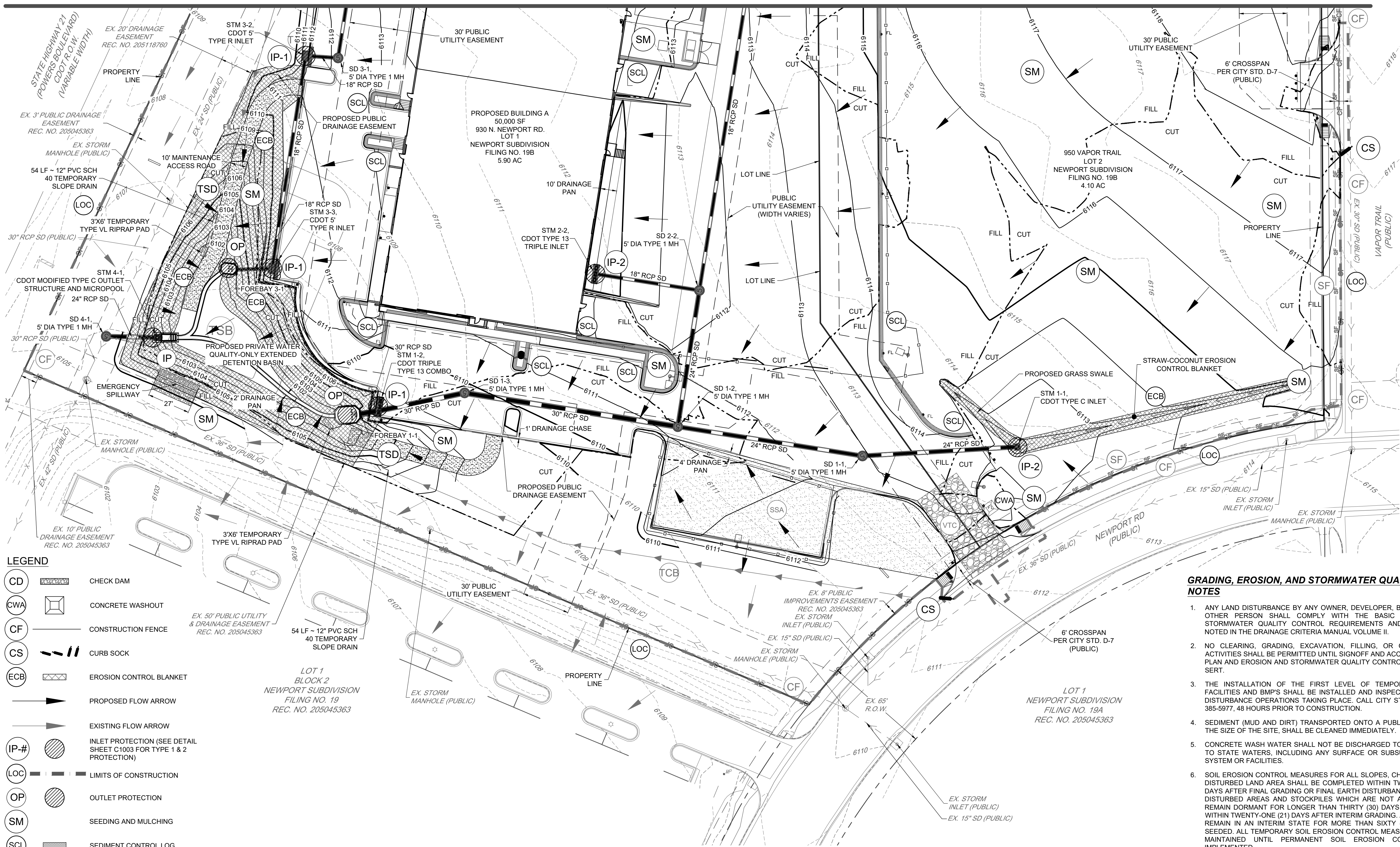
CWA	CONCRETE WASHOUT
CF	CONSTRUCTION FENCE
CS	CURB SOCK
ECB	EROSION CONTROL BLANKET
	PROPOSED FLOW ARROW
	EXISTING FLOW ARROW
IP-#	INLET PROTECTION (SEE DETAIL SHEET C1003 FOR TYPE 1 & 2 PROTECTION)
LOC	LIMITS OF CONSTRUCTION
OP	OUTLET PROTECTION
SM	SEEDING AND MULCHING
SCL	SEDIMENT CONTROL LOG
SF	SILT FENCE
SSA	STABILIZED STAGING AREA
TCB	TEMPORARY COMPACTED BERM
TSB	TEMPORARY SEDIMENT BASIN
TSB	TEMPORARY SEDIMENT BASIN
VTC	VEHICLE TRACKING CONTROL
	CUT/FILL LINE
	PROPERTY LINE

GRADING, EROSION, AND STORMWATER QUALITY CONTROL NOTES

- ANY LAND DISTURBANCE BY ANY OWNER, DEVELOPER, BUILDER, CONTRACTOR, OR OTHER PERSON SHALL COMPLY WITH THE BASIC GRADING, EROSION, AND STORMWATER QUALITY CONTROL REQUIREMENTS AND GENERAL PROHIBITIONS NOTED IN THE DRAINAGE CRITERIA MANUAL VOLUME II.
- NO CLEARING, GRADING, EXCAVATION, FILLING, OR OTHER LAND DISTURBING ACTIVITIES SHALL BE PERMITTED UNTIL SIGNOFF AND ACCEPTANCE OF THE GRADING PLAN AND EROSION AND STORMWATER QUALITY CONTROL PLAN IS RECEIVED FROM SERT.
- THE INSTALLATION OF THE FIRST LEVEL OF TEMPORARY EROSION CONTROL FACILITIES AND BMP'S SHALL BE INSTALLED AND INSPECTED PRIOR TO ANY EARTH DISTURBANCE OPERATIONS TAKING PLACE. CALL CITY STORMWATER INSPECTIONS, 385-5977, 48 HOURS PRIOR TO CONSTRUCTION.
- SEDIMENT (MUD AND DIRT) TRANSPORTED ONTO A PUBLIC ROAD, REGARDLESS OF THE SIZE OF THE SITE, SHALL BE CLEANED IMMEDIATELY.
- CONCRETE WASH WATER SHALL NOT BE DISCHARGED TO OR ALLOWED TO RUNOFF TO STATE WATERS, INCLUDING ANY SURFACE OR SUBSURFACE STORM DRAINAGE SYSTEM OR FACILITIES.
- SOIL EROSION CONTROL MEASURES FOR ALL SLOPES, CHANNELS, DITCHES, OR ANY DISTURBED LAND AREA SHALL BE COMPLETED WITHIN TWENTY-ONE (21) CALENDAR DAYS AFTER FINAL GRADING OR FINAL EARTH DISTURBANCE HAS BEEN COMPLETED. DISTURBED AREAS AND STOCKPILES WHICH ARE NOT AT FINAL GRADE BUT WILL REMAIN DORMANT FOR LONGER THAN THIRTY (30) DAYS SHALL ALSO BE MULCHED WITHIN TWENTY-ONE (21) DAYS AFTER INTERIM GRADING. AN AREA THAT IS GOING TO REMAIN IN AN INTERIM STATE FOR MORE THAN SIXTY (60) DAYS SHALL ALSO BE SEEDDED. ALL TEMPORARY SOIL EROSION CONTROL MEASURES AND BMP'S SHALL BE MAINTAINED UNTIL PERMANENT SOIL EROSION CONTROL MEASURES ARE IMPLEMENTED.
- THE GRADING AND EROSION CONTROL PLAN WILL BE SUBJECT TO RE-REVIEW AND RE-ACCEPTANCE BY SERT SHOULD ANY OF THE FOLLOWING OCCUR: GRADING DOES NOT COMMENCE WITHIN TWELVE (12) MONTHS OF THE CITY ENGINEER'S ACCEPTANCE OF THE PLAN, A CHANGE IN PROPERTY OWNERSHIP, PROPOSED DEVELOPMENT CHANGES, OR PROPOSED GRADING REVISIONS.
- THE PLAN SHALL NOT SUBSTANTIALLY CHANGE THE DEPTH OF COVER, OR ACCESS TO UTILITY FACILITIES. ADDITIONALLY, THE PLAN SHALL NOT INCREASE OR DIVERT WATER TOWARDS UTILITY FACILITIES. ANY CHANGES TO UTILITY FACILITIES TO ACCOMMODATE THE PLAN, MUST BE DISCUSSED AND AGREED TO BY THE AFFECTED UTILITY PRIOR TO IMPLEMENTING THE PLAN. THE RESULTING COST TO RELOCATE OR PROTECT UTILITIES, OR PROVIDE INTERIM ACCESS IS AT THE EXPENSE OF THE PLAN APPLICANT.
- ALL UTILITY INSTALLATIONS WITHIN THE LIMITS OF DISTURBANCE SHOWN ON THIS PLAN ARE COVERED UNDER THIS PLAN. LOCATIONS OF UTILITIES WITHIN THE LIMITS OF DISTURBANCE MAY BE MODIFIED AFTER PLAN APPROVAL AS A FIELD CHANGE. UTILITY INSTALLATIONS RELATED TO THE PRIVATE DEVELOPMENT THAT EXTEND BEYOND THE LIMITS OF DISTURBANCE SHOWN ON THIS PLAN ARE CONSIDERED TO BE PART OF THE LARGER DEVELOPMENT, AND THEREFORE REQUIRE A PLAN MODIFICATION OR SEPARATE PLAN FOR THE ADDITIONAL DISTURBANCE AREA.



LOT 1 ADDRESS: 930 NORTH NEWPORT ROAD
LOT 2 ADDRESS: 950 VAPOR TRAIL



LEGEND	
CD	CHECK DAM
CWA	CONCRETE WASHOUT
CF	CONSTRUCTION FENCE
CS	CURB SOCK
ECB	EROSION CONTROL BLANKET
→	PROPOSED FLOW ARROW
→	EXISTING FLOW ARROW
IP-#	INLET PROTECTION (SEE DETAIL SHEET C1003 FOR TYPE 1 & 2 PROTECTION)
LOC	LIMITS OF CONSTRUCTION
OP	OUTLET PROTECTION
SM	SEEDING AND MULCHING
SCL	SEDIMENT CONTROL LOG
SF	SILT FENCE
SSA	STABILIZED STAGING AREA
TCB	TEMPORARY COMPACTED BERM
TSB	TEMPORARY SEDIMENT BASIN
TSB	TEMPORARY SEDIMENT BASIN
VTC	VEHICLE TRACKING CONTROL
---	CUT/FILL LINE
---	PROPERTY LINE

EARTHWORK QUANTITIES

CUT = 6,806 CY
FILL = 7,455 CY
NET = 634 CY IMPORT

SOIL TYPE: BLAKELAND LOAMY SAND & TRUCKTON LOAMY SAND

TIMING: START FEBRUARY 2021 WITH FINAL STABILIZATION IN NOVEMBER 2021
DISTURBED AREA: 9.19 AC

RECEIVING WATERS: SAND CREEK (PETERSON DRAINAGE BASIN)

GRADING, EROSION, AND STORMWATER QUALITY CONTROL NOTES

- ANY LAND DISTURBANCE BY ANY OWNER, DEVELOPER, BUILDER, CONTRACTOR, OR OTHER PERSON SHALL COMPLY WITH THE BASIC GRADING, EROSION AND STORMWATER QUALITY CONTROL REQUIREMENTS AND GENERAL PROHIBITIONS NOTED IN THE DRAINAGE CRITERIA MANUAL VOLUME II.
- NO CLEARING, GRADING, EXCAVATION, FILLING, OR OTHER LAND DISTURBING ACTIVITIES SHALL BE PERMITTED UNTIL SIGNOFF AND ACCEPTANCE OF THE GRADING PLAN AND EROSION AND STORMWATER QUALITY CONTROL PLAN IS RECEIVED FROM SERT.
- THE INSTALLATION OF THE FIRST LEVEL OF TEMPORARY EROSION CONTROL FACILITIES AND BMP'S SHALL BE INSTALLED AND INSPECTED PRIOR TO ANY EARTH DISTURBANCE OPERATIONS TAKING PLACE. CALL CITY STORMWATER INSPECTIONS, 385-5977, 48 HOURS PRIOR TO CONSTRUCTION.
- SEDIMENT (MUD AND DIRT) TRANSPORTED ONTO A PUBLIC ROAD, REGARDLESS OF THE SIZE OF THE SITE, SHALL BE CLEANED IMMEDIATELY.
- CONCRETE WASH WATER SHALL NOT BE DISCHARGED TO OR ALLOWED TO RUNOFF TO STATE WATERS, INCLUDING ANY SURFACE OR SUBSURFACE STORM DRAINAGE SYSTEM OR FACILITIES.
- SOIL EROSION CONTROL MEASURES FOR ALL SLOPES, CHANNELS, DITCHES, OR ANY DISTURBED LAND AREA SHALL BE COMPLETED WITHIN TWENTY-ONE (21) CALENDAR DAYS AFTER FINAL GRADING OR FINAL EARTH DISTURBANCE HAS BEEN COMPLETED. DISTURBED AREAS AND STOCKPILES WHICH ARE NOT AT FINAL GRADE BUT WILL REMAIN DORMANT FOR LONGER THAN THIRTY (30) DAYS SHALL ALSO BE MULCHED WITHIN TWENTY-ONE (21) DAYS AFTER INTERIM GRADING. AN AREA THAT IS GOING TO REMAIN IN AN INTERIM STATE FOR MORE THAN SIXTY (60) DAYS SHALL ALSO BE SEEDED. ALL TEMPORARY SOIL EROSION CONTROL MEASURES AND BMP'S SHALL BE MAINTAINED UNTIL PERMANENT SOIL EROSION CONTROL MEASURES ARE IMPLEMENTED.
- THE GRADING AND EROSION CONTROL PLAN WILL BE SUBJECT TO RE-REVIEW AND RE-ACCEPTANCE BY SERT SHOULD ANY OF THE FOLLOWING OCCUR: GRADING DOES NOT COMMENCE WITHIN TWELVE (12) MONTHS OF THE CITY ENGINEERS ACCEPTANCE OF THE PLAN, A CHANGE IN PROPERTY OWNERSHIP, PROPOSED DEVELOPMENT CHANGES, OR PROPOSED GRADING REVISIONS.
- THE PLAN SHALL NOT SUBSTANTIALLY CHANGE THE DEPTH OF COVER, OR ACCESS TO UTILITY FACILITIES. ADDITIONALLY, THE PLAN SHALL NOT INCREASE OR DIVERT WATER TOWARDS UTILITY FACILITIES. ANY CHANGES TO UTILITY FACILITIES TO ACCOMMODATE THE PLAN, MUST BE DISCUSSED AND AGREED TO BY THE AFFECTED UTILITY PRIOR TO IMPLEMENTING THE PLAN. THE RESULTING COST TO RELOCATE OR PROTECT UTILITIES, OR PROVIDE INTERIM ACCESS IS AT THE EXPENSE OF THE PLAN APPLICANT.
- ALL UTILITY INSTALLATIONS WITHIN THE LIMITS OF DISTURBANCE SHOWN ON THIS PLAN ARE COVERED UNDER THIS PLAN. LOCATIONS OF UTILITIES WITHIN THE LIMITS OF DISTURBANCE MAY BE MODIFIED AFTER PLAN APPROVAL AS A FIELD CHANGE. UTILITY INSTALLATIONS RELATED TO THE PRIVATE DEVELOPMENT THAT EXTEND BEYOND THE LIMITS OF DISTURBANCE SHOWN ON THIS PLAN ARE CONSIDERED TO BE PART OF THE LARGER DEVELOPMENT, AND THEREFORE REQUIRE A PLAN MODIFICATION OR SEPARATE PLAN FOR THE ADDITIONAL DISTURBANCE AREA.

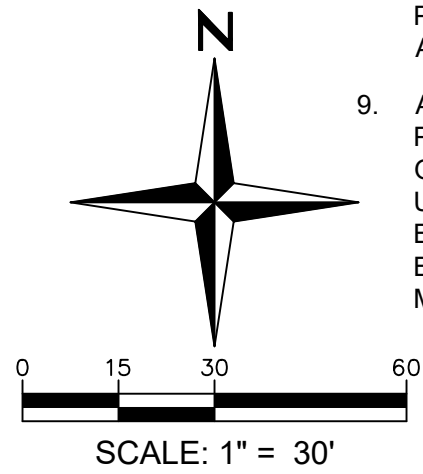
NOTES:

- CONTRACTOR TO DETERMINE FINAL STAGING AREA SIZE & LOCATION. PROTECT WITH APPLICABLE BMP'S.
- STOCKPILE AND TEMPORARY DISPOSAL AREAS WILL BE DETERMEIND BY CONTRACTOR.
- ALL PROPOSED DRAINAGE IMPROVEMENTS ARE PRIVATE UNLESS OTHERWISE NOTED.

STREET DESIGN FOR CITY ENGINEERING

UTILITY GRADE REVIEW	DATE
CURB & GUTTER REVIEW	DATE
FINAL REVIEW	DATE
DRAINAGE DESIGN	DATE

THIS IS FILED IN ACCORDANCE WITH SECTION 7.7.906 (DRAINAGE ORDINANCE) OF THE CODE OF THE CITY OF COLORADO SPRINGS, 2001 AS AMENDED.



LOT 1 ADDRESS: 930 NORTH NEWPORT ROAD
LOT 2 ADDRESS: 950 VAPOR TRAIL