

FOR AND ON BEHALF
OF WARE MALCOMB

73RD & WASHINGTON

EROSION CONTROL PLAN - INITIAL

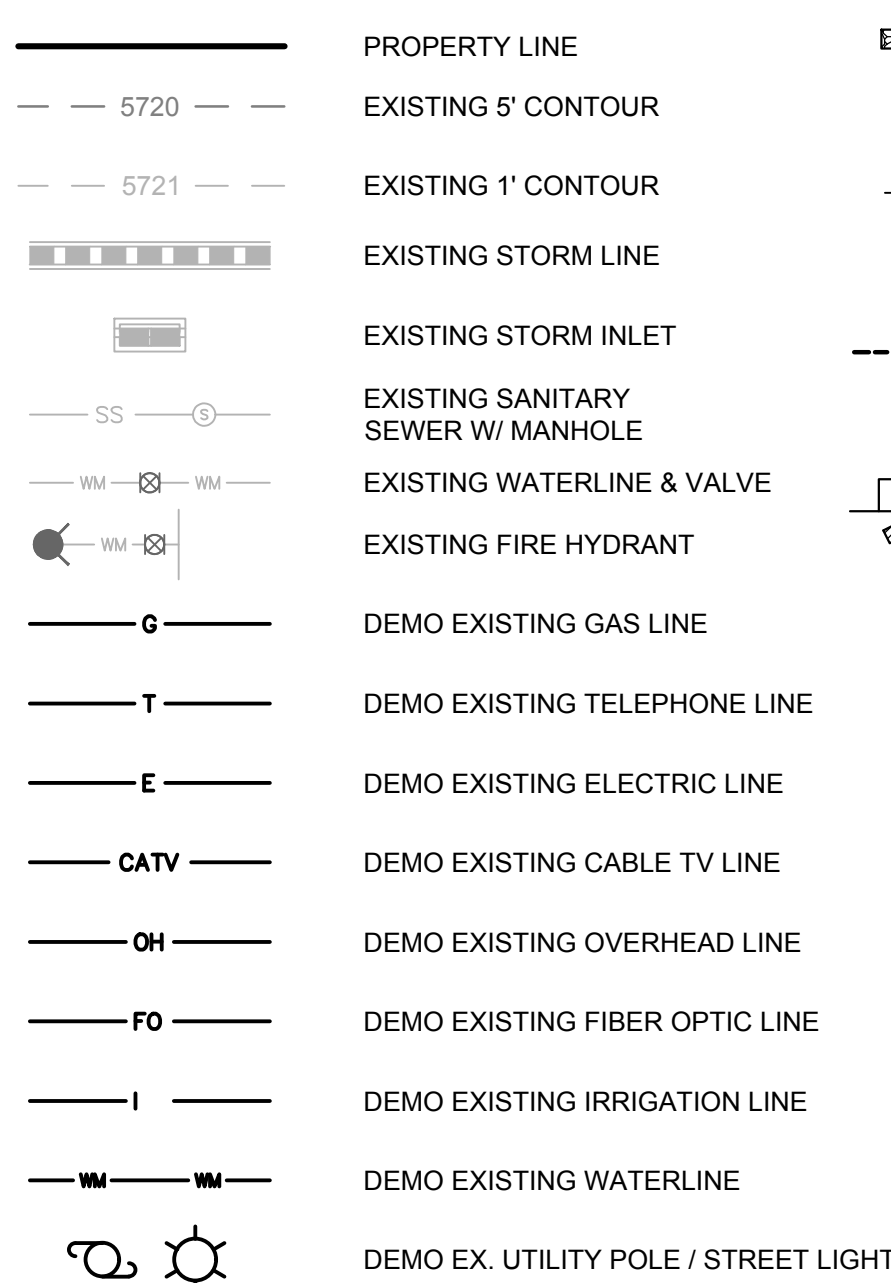
[illegible]

JOB NO.:	DEN21-0057
PA / PM:	G. BLOUNT
DRAWN BY:	J. LOFQUIST
DATE:	11/10/21
PLOT DATE:	9/10/22

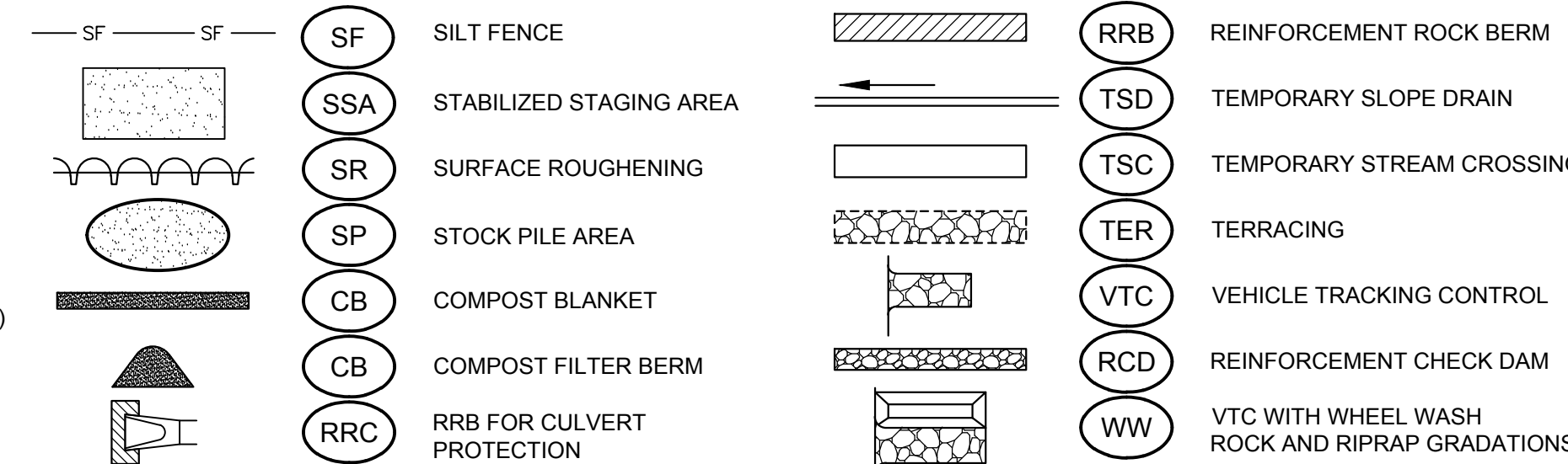
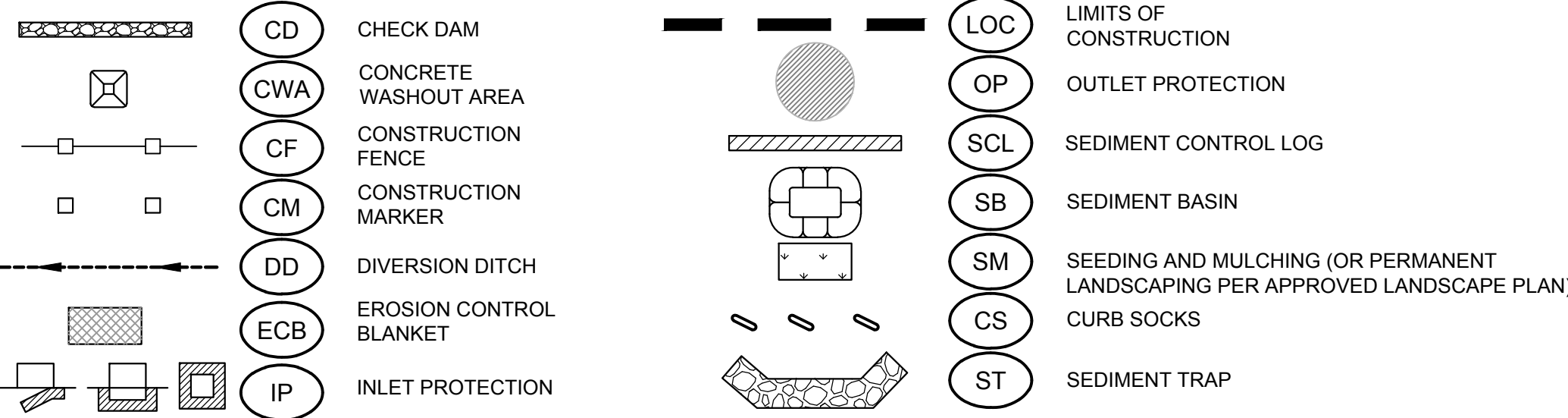
SHEET

C2.0

LEGEND:

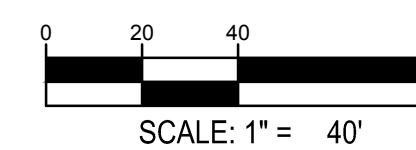
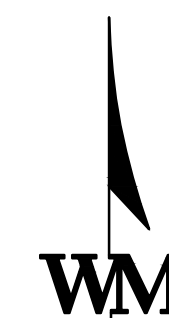
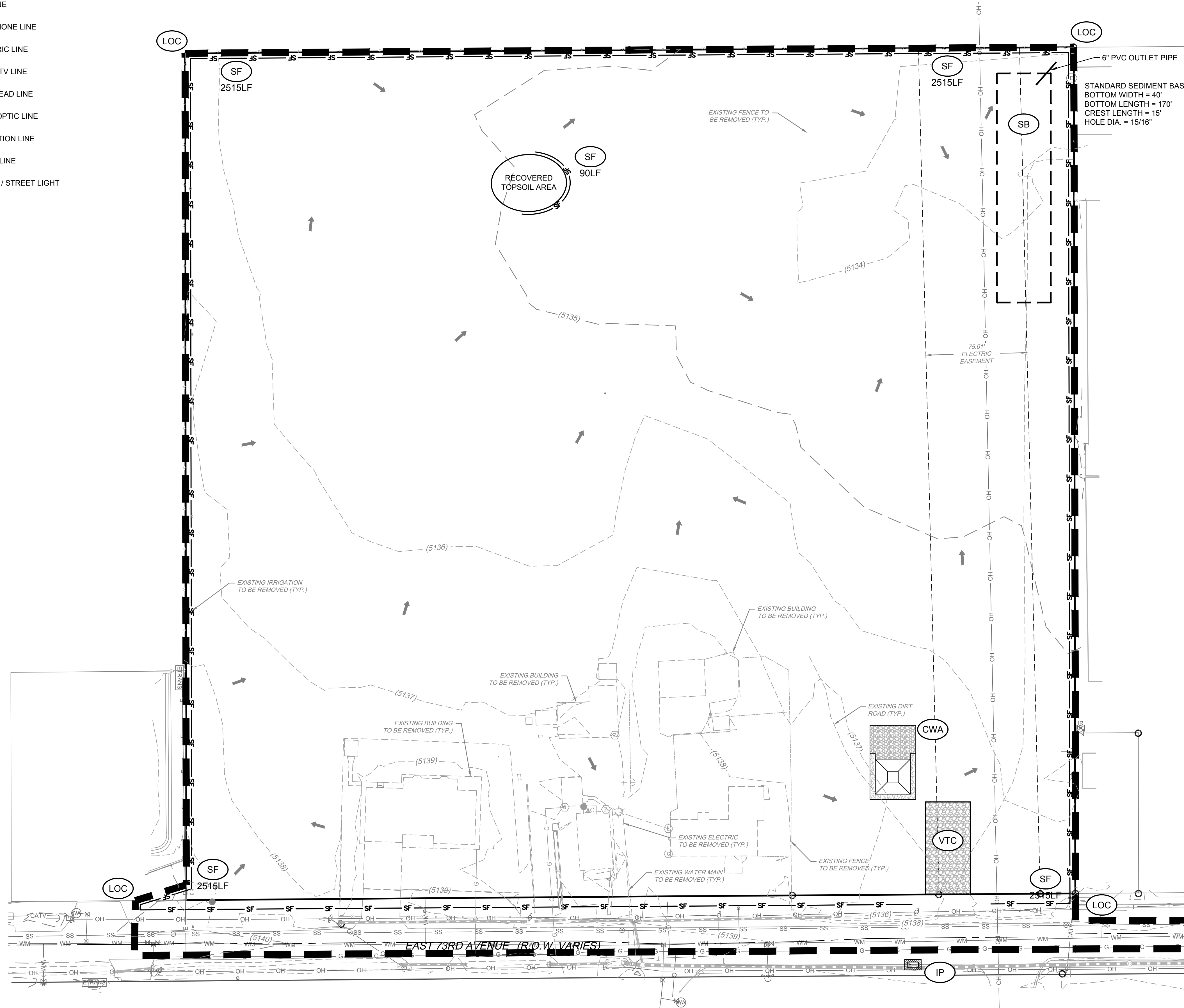


BMP LEGEND



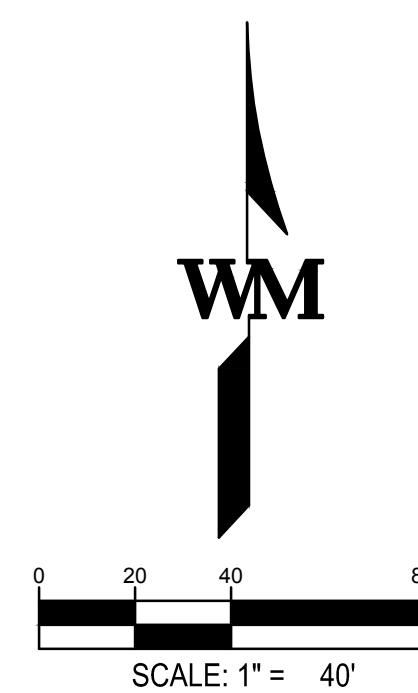
WM NOTES: EROSION CONTROL

1. CONTRACTOR TO INSPECT AND MAINTAIN EROSION CONTROL MEASURES THROUGHOUT THE COURSE OF CONSTRUCTION, INCLUDING INSTALLING, REPAIRING, REPLACING, RELOCATING, AND MODIFYING AS NECESSARY FOR CONSTRUCTION AND TO ENSURE THE SITE IS IN COMPLIANCE WITH STATE AND LOCAL REQUIREMENTS.
2. ADDITIONAL EROSION CONTROL MEASURES NOT SHOWN ON THIS PLAN MAY BE NECESSARY TO PREVENT EROSION AND SEDIMENTATION.
3. AREAS THAT ARE TO REMAIN IN A DISTURBED CONDITION FOR AN EXTENDED PERIOD SHALL BE TEMPORARILY SEEDED IN ACCORDANCE WITH STATE AND LOCAL CRITERIA.
4. REFERENCE TO THE APPROVED LANDSCAPE PLAN FOR FINAL STABILIZATION INFORMATION. AREAS NOT STABILIZED BY PAVEMENT, BUILDING FOOTPRINT, PERMANENT LANDSCAPING, OR OTHER PERMANENT STABILIZATION SHALL BE PERMANENTLY SEEDED PER STATE AND LOCAL REQUIREMENTS.



WARE MALCOMB assumes no responsibility for utility locations. The utilities shown on this drawing have been plotted from the best available information. It is, however, the contractors responsibility to field verify the location of all utilities prior to the commencement of any construction.

WARE MALCOMB assumes no responsibility for utility locations. The utilities shown on this drawing have been plotted from the best available information. It is, however, the contractors responsibility to field verify the location of all utilities prior to the commencement of any construction.



FOR AND ON BEHALF
OF WARE MALCOMB

73RD & WASHINGTON

EROSION CONTROL PLAN - FINAL

[illegible]

JOB NO.:	DEN21-0057
PA / PM:	G. BLOUNT
DRAWN BY:	J. LOFQUIST
DATE:	11/10/21
PLOT DATE:	9/13/22

SHEET

C2.2

WARE MALCOMB assumes no responsibility for utility locations. The utilities shown on this drawing have been plotted from the best available information. It is, however, the contractors responsibility to field verify the location of all utilities prior to the commencement of any construction.

