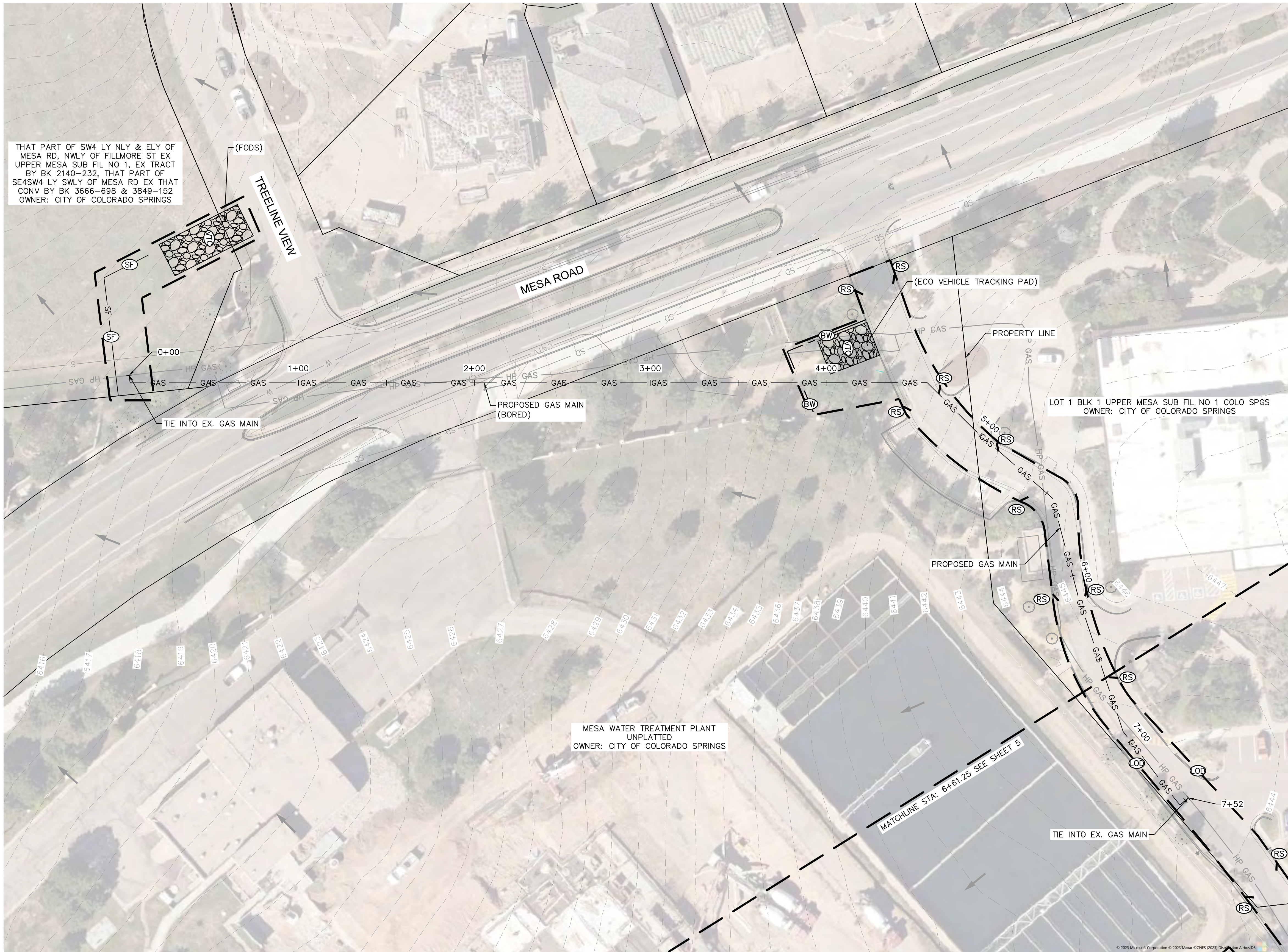


K:\COS_Civil\067607121_CSU Manitou to Mesa\GADD\PlanSheets\GEC\GEC_EC-INITAL.dwg Schmelbach, Ryan 8/15/2023 4:51 PM



LEGEND

—	PROPERTY LINE
— W —	EXISTING WATER MAIN
— S —	EXISTING SANITARY SEWER
— SD —	EXISTING STORM SEWER
— HP GAS —	EXISTING GAS LINE
— UGE —	EXISTING UND. ELECTRIC LINE
— CTV —	EXISTING COMM. LINE
— FO —	EXISTING FIBER OPTIC
— GAS —	PROPOSED GAS MAIN

GEC LEGEND

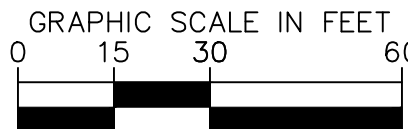
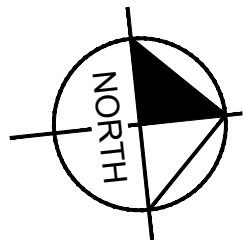
— (LD) —	LIMITS OF DISTURBANCE
— (SF) —	SILT FENCE
— (SCL) —	SEDIMENT CONTROL LOG
— (BW) —	BLACK FABRIC WATTLE
— (FRW) —	FILTREXX WATTLE
— (RS) —	ROCK SOCK
— (CWA) —	CONCRETE WASHOUT
— (VTC) —	VEHICLE TRACKING CONTROL
— (SSA) —	STABILIZED STAGING AREA
— (SP) —	STOCKPILING

GEC NOTES

- SEE SHEET 16 FOR STANDARD COS STORMWATER ENTERPRISE DETAILS
- THIS PLAN SHOWS BOTH INITIAL AND INTERIM BMP
- NO IMPROVEMENTS ARE PROPOSED APART FROM CONTRACTOR SHALL MAINTAIN STABILIZED STAGING AREA (SSA), VEHICLE TRACKING CONTROL (VTC), AND CONCRETE WASHOUT AREA (CWA) AS SHOWN IN THE PLANS
- CONTRACTOR SHALL UPDATE THE GESC PLANS IN THE FIELD TO INDICATE THE LOCATION OF THE SSA, VTC, CWA, AND CCM'S.
- CONTRACTOR TO USE TEMPORARY VTC SYSTEM SUCH AS FODS COMPOSITE TRACKOUT CONTROL SYSTEM AND EVT AS SHOWN IN THE PLANS. SEE SHEET 17 FOR DETAIL
- CONTRACTOR TO USE BLACK FABRIC WATTLE OR FILTREX WATTLE IN LIEU OF COLORADO SPRINGS STANDARD SEDIMENT CONTROL LOGS PER AS SHOWN IN THE PLANS. SEE SHEETS 18 & 19 FOR DETAILS.

LIMITS OF DISTURBANCE

ONSITE IMPROVEMENTS	= ±3.92 ACRES
OFFSITE IMPROVEMENTS	= ±0.00 ACRES
TOTAL	= ±3.92 ACRES



Kimley»Horn

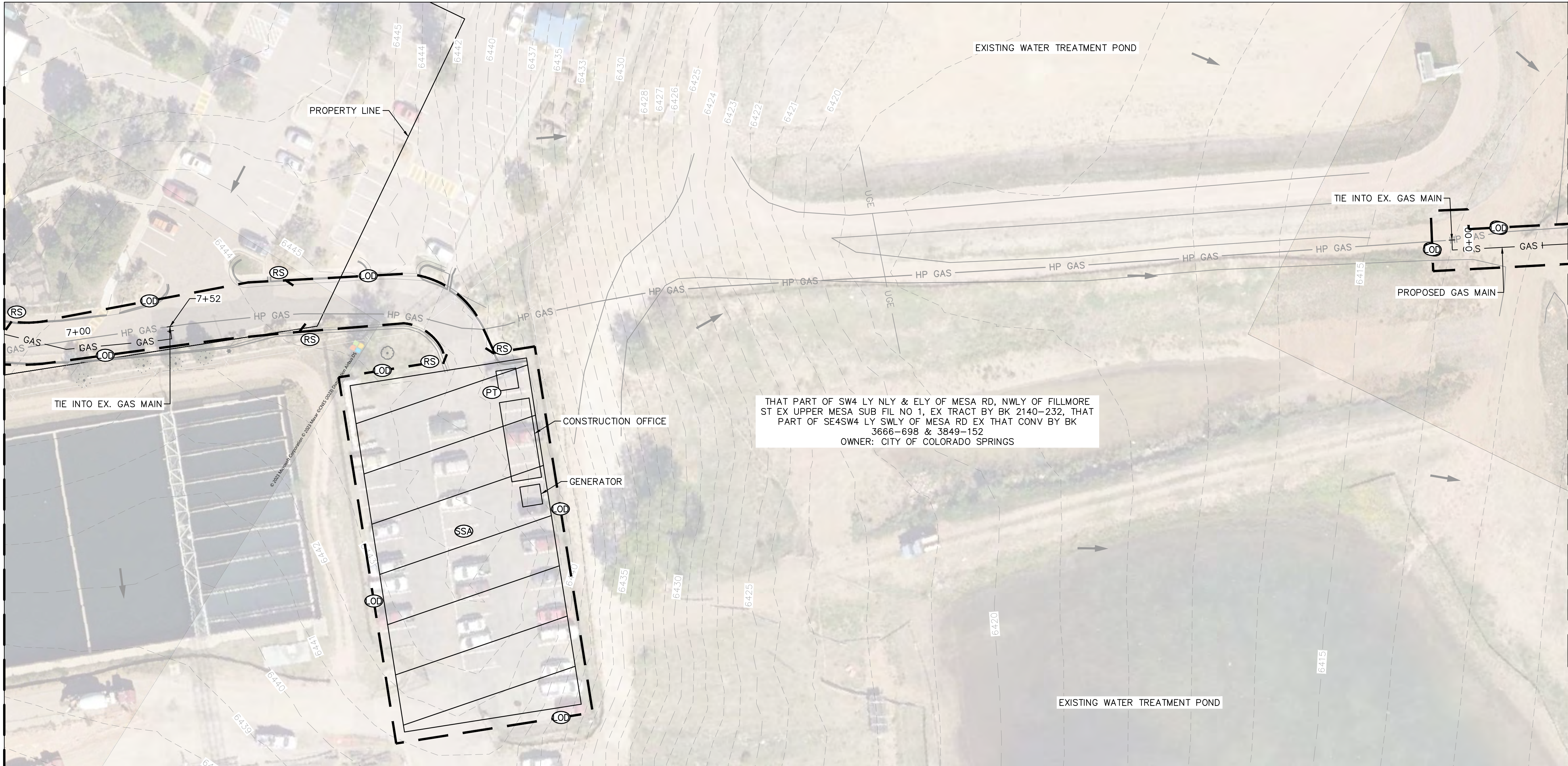
2023 KIMLEY-HORN AND ASSOCIATES, INC.
2 North Nevada Avenue, Suite 900
Colorado Springs, Colorado 80903 (719) 453-0180

CSU GAS - MESA TO MANITOU
PHASE 5.2
GEC PLANS
INITIAL/INTERIM GEC PLAN

PRELIMINARY
FOR REVIEW ONLY
NOT FOR
CONSTRUCTION
Kimley»Horn
Kimley-Horn and Associates, Inc.

PROJECT NO.
067607121

SHEET
4



LEGEND

	PROPERTY LINE
	EXISTING WATER MAIN
	EXISTING SANITARY SEWER
	EXISTING STORM SEWER
	EXISTING GAS LINE
	EXISTING UND.G. ELECTRIC LINE
	EXISTING COMM. LINE
	EXISTING FIBER OPTIC
	GAS — PROPOSED GAS MAIN

GEC LEGEND

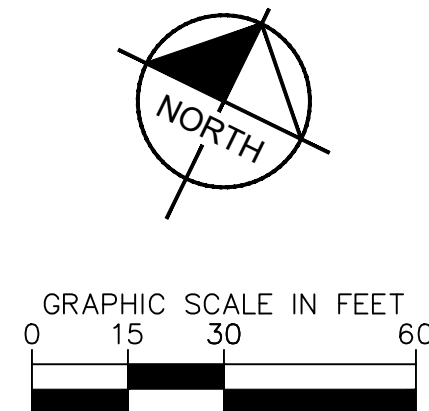
	LIMITS OF DISTURBANCE
	SILT FENCE
	SEDIMENT CONTROL LOG
	BLACK FABRIC WATTLE
	FILTREXX WATTLE
	ROCK SOCK
	CONCRETE WASHOUT
	VEHICLE TRACKING CONTROL
	STABILIZED STAGING AREA
	STOCKPILING

GEC NOTES

- SEE SHEET 16 FOR STANDARD COS STORMWATER ENTERPRISE DETAILS
- THIS PLAN SHOWS BOTH INITIAL AND INTERIM BMP
- NO IMPROVEMENTS ARE PROPOSED APART FROM CONTRACTOR SHALL MAINTAIN STABILIZED STAGING AREA (SSA), VEHICLE TRACKING CONTROL (VTC), AND CONCRETE WASHOUT AREA (CWA) AS SHOWN IN THE PLANS
- CONTRACTOR SHALL UPDATE THE GESC PLANS IN THE FIELD TO INDICATE THE LOCATION OF THE SSA, VTC, CWA, AND CCM'S.
- CONTRACTOR TO USE TEMPORARY VTC SYSTEM SUCH AS FODS COMPOSITE TRACKOUT CONTROL SYSTEM AND EVT AS SHOWN IN THE PLANS. SEE SHEET 17 FOR DETAIL
- CONTRACTOR TO USE BLACK FABRIC WATTLE OR FILTREX WATTLE IN LIEU OF COLORADO SPRINGS STANDARD SEDIMENT CONTROL LOGS PER AS SHOWN IN THE PLANS. SEE SHEETS 18 & 19 FOR DETAILS.

LIMITS OF DISTURBANCE

ONSITE IMPROVEMENTS	= ±3.92 ACRES
OFFSITE IMPROVEMENTS	= ±0.00 ACRES
TOTAL	= ±3.92 ACRES



Kimley»Horn

2023 KIMLEY-HORN AND ASSOCIATES, INC.
2 North Nevada Avenue, Suite 900
Colorado Springs, Colorado 80903 (719) 453-0180

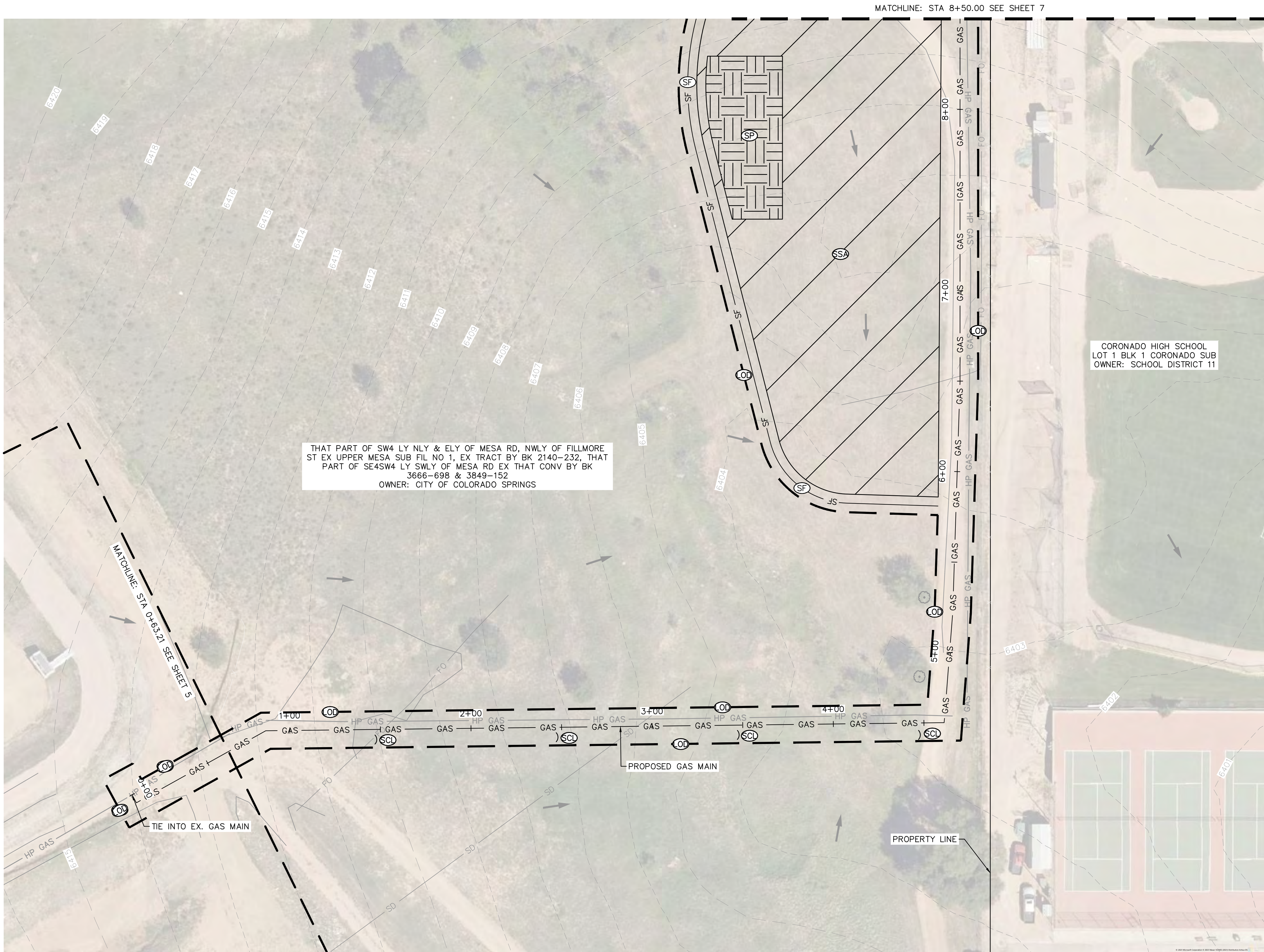
DESIGNED BY: KRK
DRAWN BY: RES
CHECKED BY: KRK
DATE: 8/13/23

CSU GAS - MESA TO MANITOU
PHASE 5.2 & 5.3
GEC PLANS
INITIAL/INTERIM GEC PLAN

PRELIMINARY
FOR REVIEW ONLY
NOT FOR
CONSTRUCTION
Kimley»Horn
Kimley-Horn and Associates, Inc.

PROJECT NO.
067607121

SHEET
5



LEGEND

—	PROPERTY LINE
— W —	EXISTING WATER MAIN
— S —	EXISTING SANITARY SEWER
— SD —	EXISTING STORM SEWER
— HP GAS —	EXISTING GAS LINE
— UGE —	EXISTING UND. ELECTRIC LINE
— CTV —	EXISTING COMM. LINE
— FO —	EXISTING FIBER OPTIC
— GAS —	PROPOSED GAS MAIN

GEC LEGEND

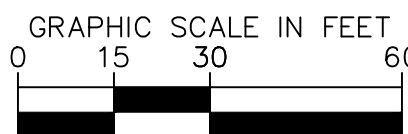
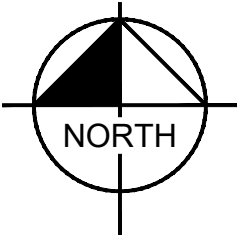
— (LO) —	LIMITS OF DISTURBANCE
— (SF) —	SILT FENCE
— (SCL) —	SEDIMENT CONTROL LOG
— (BW) —	BLACK FABRIC WATTLE
— (FRW) —	FILTREXX WATTLE
— (RS) —	ROCK SOCK
— (CWA) —	CONCRETE WASHOUT
— (VTC) —	VEHICLE TRACKING CONTROL
— (SSA) —	STABILIZED STAGING AREA
— (SP) —	STOCKPILING

GEC NOTES

- SEE SHEET 16 FOR STANDARD COS STORMWATER ENTERPRISE DETAILS
- THIS PLAN SHOWS BOTH INITIAL AND INTERIM BMP
- NO IMPROVEMENTS ARE PROPOSED APART FROM CONTRACTOR SHALL MAINTAIN STABILIZED STAGING AREA (SSA), VEHICLE TRACKING CONTROL (VTC), AND CONCRETE WASHOUT AREA (CWA) AS SHOWN IN THE PLANS
- CONTRACTOR SHALL UPDATE THE GESC PLANS IN THE FIELD TO INDICATE THE LOCATION OF THE SSA, VTC, CWA, AND CCM'S.
- CONTRACTOR TO USE TEMPORARY VTC SYSTEM SUCH AS FODS COMPOSITE TRACKOUT CONTROL SYSTEM AND EVT AS SHOWN IN THE PLANS. SEE SHEET 17 FOR DETAIL
- CONTRACTOR TO USE BLACK FABRIC WATTLE OR FILTREX WATTLE IN LIEU OF COLORADO SPRINGS STANDARD SEDIMENT CONTROL LOGS PER AS SHOWN IN THE PLANS. SEE SHEETS 18 & 19 FOR DETAILS.

LIMITS OF DISTURBANCE

ONSITE IMPROVEMENTS	= ±3.92 ACRES
OFFSITE IMPROVEMENTS	= ±0.00 ACRES
TOTAL	= ±3.92 ACRES



Kimley»Horn

2023 KIMLEY-HORN AND ASSOCIATES, INC.
2 North Nevada Avenue, Suite 900
Colorado Springs, Colorado 80903 (719) 453-0180

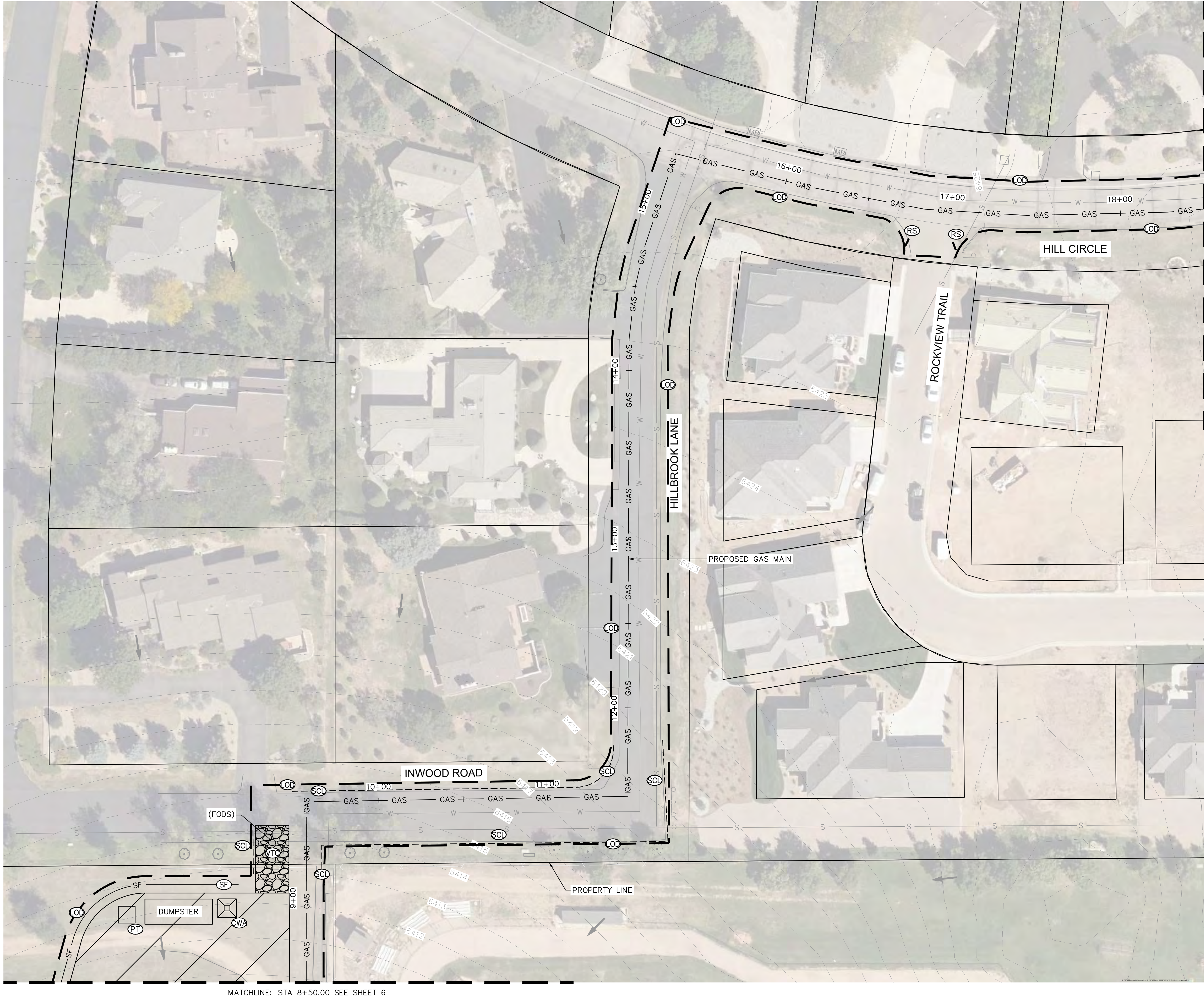
DESIGNED BY: KRK
DRAWN BY: RES
CHECKED BY: KRK
DATE: 8/13/23

CSU GAS - MESA TO MANITOU
PHASE 5.3
GEC PLANS
INITIAL/INTERIM GEC PLAN

PRELIMINARY
FOR REVIEW ONLY
NOT FOR
CONSTRUCTION
Kimley»Horn
Kimley-Horn and Associates, Inc.

PROJECT NO.
067607121

SHEET
6



LEGEND

	PROPERTY LINE
	EXISTING WATER MAIN
	EXISTING SANITARY SEWER
	EXISTING STORM SEWER
	EXISTING GAS LINE
	EXISTING UNDG. ELECTRIC LINE
	EXISTING COMM. LINE
	EXISTING FIBER OPTIC
	PROPOSED GAS MAIN

GEC LEGEND

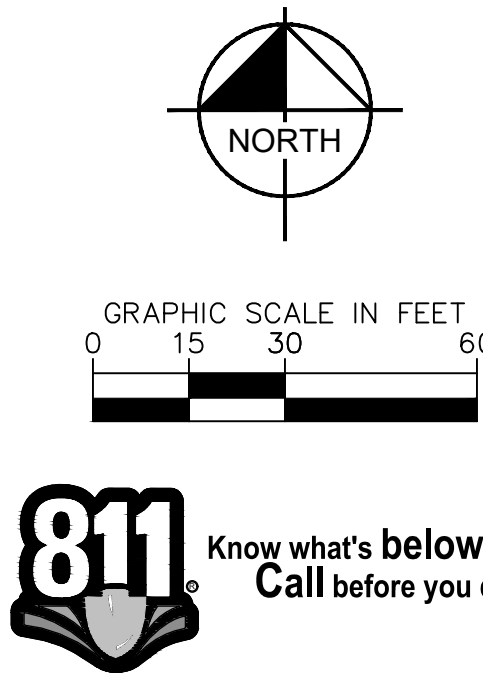
	LIMITS OF DISTURBANCE
	SILT FENCE
	SEDIMENT CONTROL LOG
	BLACK FABRIC WATTLE
	FILTREXX WATTLE
	ROCK SOCK
	CONCRETE WASHOUT
	VEHICLE TRACKING CONTROL
	STABILIZED STAGING AREA
	STOCKPILING

GEC NOTES

- SEE SHEET 16 FOR STANDARD COS STORMWATER ENTERPRISE DETAILS
- THIS PLAN SHOWS BOTH INITIAL AND INTERIM BMP
- NO IMPROVEMENTS ARE PROPOSED APART FROM CONTRACTOR SHALL MAINTAIN STABILIZED STAGING AREA (SSA), VEHICLE TRACKING CONTROL (VTC), AND CONCRETE WASHOUT AREA (CWA) AS SHOWN IN THE PLANS
- CONTRACTOR SHALL UPDATE THE GEC PLANS IN THE FIELD TO INDICATE THE LOCATION OF THE SSA, VTC, CWA, AND CCM'S.
- CONTRACTOR TO USE TEMPORARY VTC SYSTEM SUCH AS FODS COMPOSITE TRACKOUT CONTROL SYSTEM AND EVT AS SHOWN IN THE PLANS. SEE SHEET 17 FOR DETAIL
- CONTRACTOR TO USE BLACK FABRIC WATTLE OR FILTREXX WATTLE IN LIEU OF COLORADO SPRINGS STANDARD SEDIMENT CONTROL LOGS PER AS SHOWN IN THE PLANS. SEE SHEETS 18 & 19 FOR DETAILS.

LIMITS OF DISTURBANCE

ONSITE IMPROVEMENTS	= ±3.92 ACRES
OFFSITE IMPROVEMENTS	= ±0.00 ACRES
TOTAL	= ±3.92 ACRES



Kimley»Horn

2023 KIMLEY-HORN AND ASSOCIATES, INC.
2 North Nevada Avenue, Suite 900
Colorado Springs, Colorado 80903 (719) 453-0180

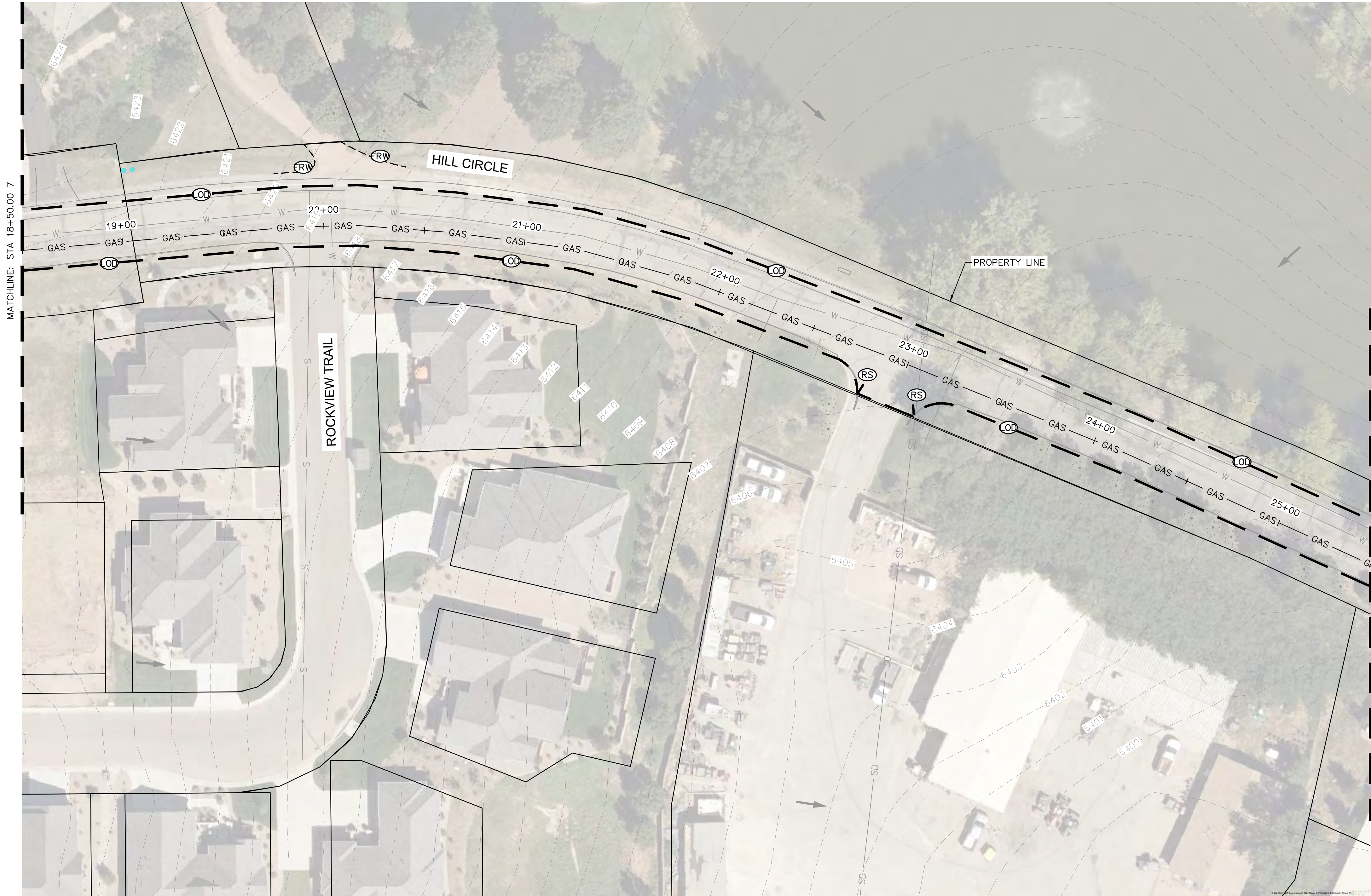
DESIGNED BY: KRK
DRAWN BY: RES
CHECKED BY: KRK
DATE: 8/13/23

CSU GAS - MESA TO MANITOU
PHASE 5.3
GEC PLANS
INITIAL/INTERIM GEC PLAN

PRELIMINARY
FOR REVIEW ONLY
NOT FOR
CONSTRUCTION
Kimley»Horn
Kimley-Horn and Associates, Inc.

PROJECT NO.
067607121

SHEET
7



LEGEND

	PROPERTY LINE
	EXISTING WATER MAIN
	EXISTING SANITARY SEWER
	EXISTING STORM SEWER
	EXISTING GAS LINE
	EXISTING UND. ELECTRIC LINE
	EXISTING COMM. LINE
	EXISTING FIBER OPTIC
	PROPOSED GAS MAIN

GEC LEGEND

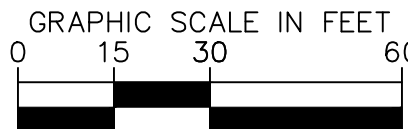
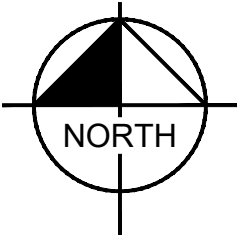
	LIMITS OF DISTURBANCE
	SILT FENCE
	SEDIMENT CONTROL LOG
	BLACK FABRIC WATTLE
	FILTREXX WATTLE
	ROCK SOCK
	CONCRETE WASHOUT
	VEHICLE TRACKING CONTROL
	STABILIZED STAGING AREA
	STOCKPILING

GEC NOTES

- SEE SHEET 16 FOR STANDARD COS STORMWATER ENTERPRISE DETAILS
- THIS PLAN SHOWS BOTH INITIAL AND INTERIM BMP
- NO IMPROVEMENTS ARE PROPOSED APART FROM CONTRACTOR SHALL MAINTAIN STABILIZED STAGING AREA (SSA), VEHICLE TRACKING CONTROL (VTC), AND CONCRETE WASHOUT AREA (CWA) AS SHOWN IN THE PLANS
- CONTRACTOR SHALL UPDATE THE GEC PLANS IN THE FIELD TO INDICATE THE LOCATION OF THE SSA, VTC, CWA, AND CCM'S.
- CONTRACTOR TO USE TEMPORARY VTC SYSTEM SUCH AS FODS COMPOSITE TRACKOUT CONTROL SYSTEM AND EVT AS SHOWN IN THE PLANS. SEE SHEET 17 FOR DETAIL
- CONTRACTOR TO USE BLACK FABRIC WATTLE OR FILTREXX WATTLE IN LIEU OF COLORADO SPRINGS STANDARD SEDIMENT CONTROL LOGS PER AS SHOWN IN THE PLANS. SEE SHEETS 18 & 19 FOR DETAILS.

LIMITS OF DISTURBANCE

ONSITE IMPROVEMENTS	= ±3.92 ACRES
OFFSITE IMPROVEMENTS	= ±0.00 ACRES
TOTAL	= ±3.92 ACRES



Kimley»Horn

2023 KIMLEY-HORN AND ASSOCIATES, INC.
2 North Nevada Avenue, Suite 900
Colorado Springs, Colorado 80903 (719) 453-0180

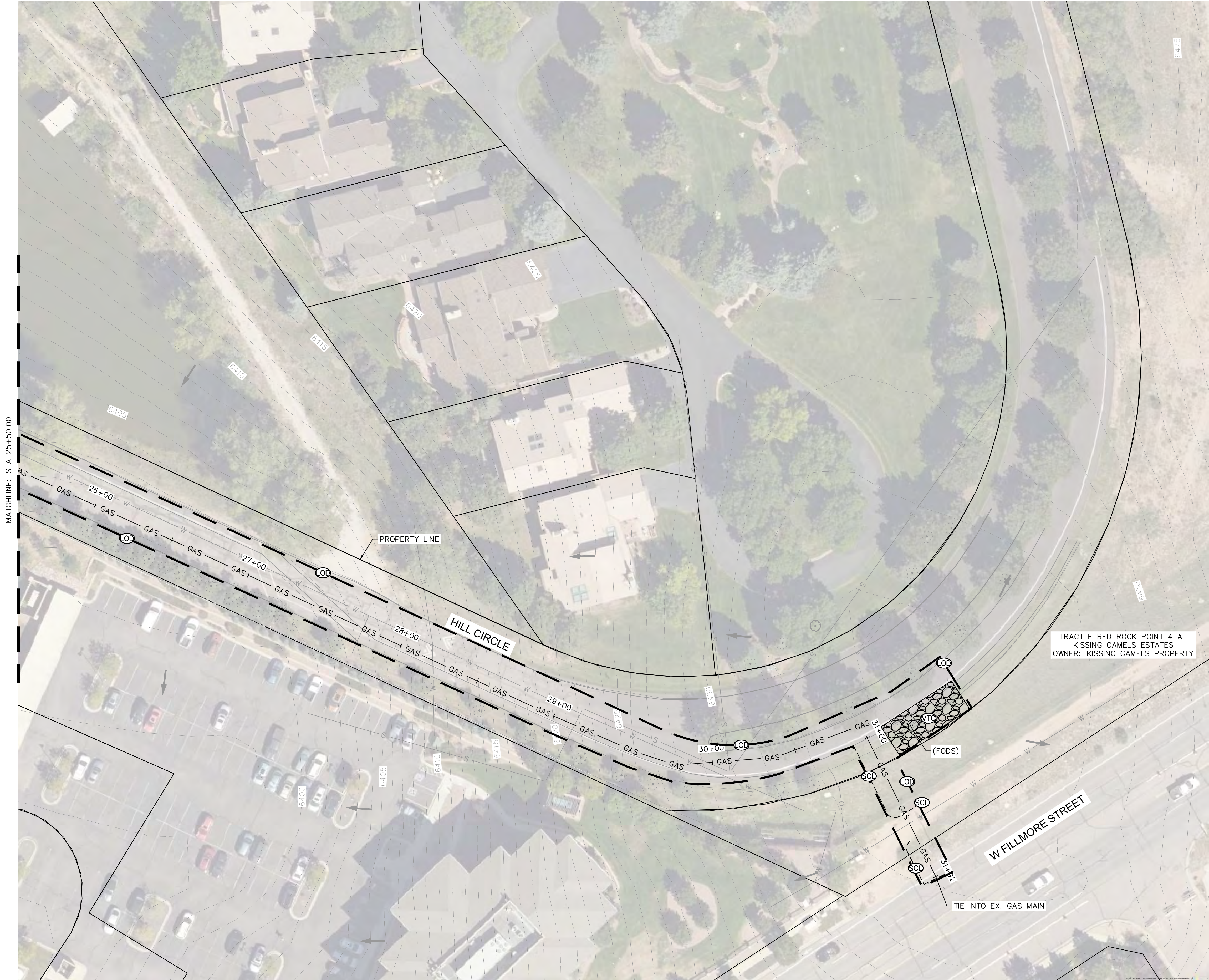
CSU GAS - MESA TO MANITOU
PHASE 5.3
GEC PLANS
INITIAL/INTERIM GEC PLAN

PRELIMINARY
FOR REVIEW ONLY
NOT FOR
CONSTRUCTION
Kimley»Horn
Kimley-Horn and Associates, Inc.

PROJECT NO.
067607121

SHEET
8

K:\COS_Civil\067607121_CSU Manitou to Mesa\CADD\PlanSheets\GEC\GEC_EC-INITAL.dwg 8/15/2023 4:51 PM Schmelbach, Ryan



LEGEND

—	PROPERTY LINE
— W —	EXISTING WATER MAIN
— S —	EXISTING SANITARY SEWER
— SD —	EXISTING STORM SEWER
— HP GAS —	EXISTING GAS LINE
— UGE —	EXISTING UNDG. ELECTRIC LINE
— CTV —	EXISTING COMM. LINE
— FO —	EXISTING FIBER OPTIC
— GAS —	PROPOSED GAS MAIN

GEC LEGEND

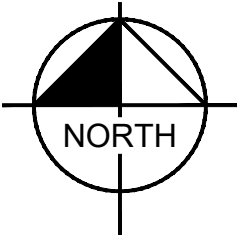
— (OD) —	LIMITS OF DISTURBANCE
— (SF) —	SILT FENCE
— (SCL) —	SEDIMENT CONTROL LOG
— (BW) —	BLACK FABRIC WATTLE
— (FRW) —	FILTREXX WATTLE
— (RS) —	ROCK SOCK
— (CWA) —	CONCRETE WASHOUT
— (VTC) —	VEHICLE TRACKING CONTROL
— (SSA) —	STABILIZED STAGING AREA
— (SP) —	STOCKPILING

GEC NOTES

- SEE SHEET 16 FOR STANDARD COS STORMWATER ENTERPRISE DETAILS
- THIS PLAN SHOWS BOTH INITIAL AND INTERIM BMP
- NO IMPROVEMENTS ARE PROPOSED APART FROM CONTRACTOR SHALL MAINTAIN STABILIZED STAGING AREA (SSA), VEHICLE TRACKING CONTROL (VTC), AND CONCRETE WASHOUT AREA (CWA) AS SHOWN IN THE PLANS
- CONTRACTOR SHALL UPDATE THE GESC PLANS IN THE FIELD TO INDICATE THE LOCATION OF THE SSA, VTC, CWA, AND CCM'S.
- CONTRACTOR TO USE TEMPORARY VTC SYSTEM SUCH AS FODS COMPOSITE TRACKOUT CONTROL SYSTEM AND EVT AS SHOWN IN THE PLANS. SEE SHEET 17 FOR DETAIL
- CONTRACTOR TO USE BLACK FABRIC WATTLE OR FILTREX WATTLE IN LIEU OF COLORADO SPRINGS STANDARD SEDIMENT CONTROL LOGS PER AS SHOWN IN THE PLANS. SEE SHEETS 18 & 19 FOR DETAILS.

LIMITS OF DISTURBANCE

ONSITE IMPROVEMENTS	= ±3.92 ACRES
OFFSITE IMPROVEMENTS	= ±0.00 ACRES
TOTAL	= ±3.92 ACRES



GRAPHIC SCALE IN FEET
0 15 30 60



Kimley»Horn

2023 KIMLEY-HORN AND ASSOCIATES, INC.
2 North Nevada Avenue, Suite 900
Colorado Springs, Colorado 80903 (719) 453-0180

DESIGNED BY: KRK
DRAWN BY: RES
CHECKED BY: KRK
DATE: 8/13/23

CSU GAS - MESA TO MANITOU
PHASE 5.3
GEC PLANS
INITIAL/INTERIM GEC PLAN

PRELIMINARY
FOR REVIEW ONLY
NOT FOR
CONSTRUCTION
Kimley»Horn
Kimley-Horn and Associates, Inc.

PROJECT NO.
067607121

SHEET
9